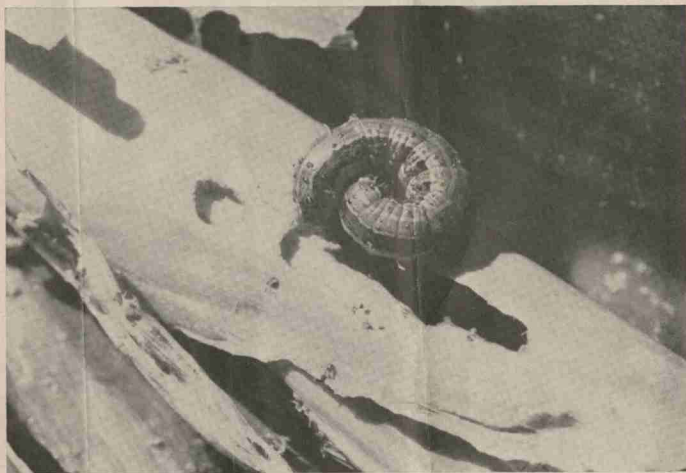


1955



Field and Forage Crop Pest Control

Published By

THE NORTH CAROLINA AGRICULTURAL EXTENSION SERVICE

North Carolina State College of Agriculture and Engineering of the University of North Carolina and the U. S. Department of Agriculture, Cooperating. State College Station, Raleigh, N. C., D. S. Weaver, Director. Distributed in furtherance of the Acts of Congress of May 8 and June 30, 1914.

Reprinted From 1955
Pesticide Handbook

CONTROL OF PESTS OF FIELD AND FORAGE CROPS — 1955

WALTER M. KULASH and JAMES R. DOGGER

Entomology

Crop	Pest	Control
Soybeans Foliage Pests	Grape colaspis Bean leaf beetle Spotted cucumber beetle Green clover worm Fall armyworm Velvetbean caterpillar Southern armyworm Japanese beetle Mexican bean beetle	Use 5% DDT dust at 12 to 15 lbs. per acre or an equivalent amount of spray. Foliage should not be used for hay within 6 weeks after treating.
	Blister beetles Grasshoppers	Use malathion at 1 to 1.5 lbs. per acre or use 70% cryolite. Direct material at undersides of leaves. Dust with 70% cryolite. Dust plants and field margins with 20% toxaphene or 2½% aldrin at 10 to 12 lbs. per acre or use an equivalent amount of spray. Do not treat later than one month before harvest.
Pod Pests	Bean leaf beetle Spotted cucumber beetle Thrips Corn earworm	As for foliage pests Use 10% DDT dust at 10-12 lbs. per acre, or an equivalent amount of spray. Direct nozzles into pod area.
	Lesser Cornstalk borer	Apply DDT as for corn earworm in late August as preventive.
Peanuts Foliage Pests	Green clover worm Velvetbean caterpillar Spotted cucumber beetle Leafhoppers Corn earworm Fall armyworm Southern armyworm Thrips	5% DDT or 10% toxaphene dust at 12 to 15 lbs. per acre or an equivalent amount of spray. 10% DDT or 20% toxaphene dust at 10 to 12 lbs. per acre or equivalent amount of spray. Harmful insecticide residues may remain if used late in the season. Apply granular aldrin to the soil surface before first cultivation as for rootworms or treat foliage with DDT at ¾ to 1 lb. actual per acre or toxaphene at 1½ lbs. actual per acre.
Soil Pests	Southern corn rootworm Lesser cornstalk borer	Apply aldrin at 2 lbs. per acre or heptachlor at 1½ lbs. per acre before first cultivation or by directing the material towards the soil and bases of the plants if applied later. Apply DDT as for corn earworm in late August as preventive.
Forage Crops and Pastures Foliage Pests	Spittlebugs Fall armyworm Corn earworm Leafhoppers Webworms "True" armyworm Pea aphid Grasshoppers	Cut hay as soon as it is practical. Dust or spray with methoxychlor at 2 lbs. per acre not later than 1 week before cutting or grazing or with toxaphene at 2 to 3 lbs. per acre not later than 4 weeks before cutting or grazing. Dust or spray as for fall armyworm or scatter poison bran bait across line of march in late afternoon. To prepare bait add: 4 lbs. Paris green or white arsenic or chlordane 50% wettable powder or toxaphene 50% wettable powder to 100 lbs. of bran and add enough water (7 to 10 gals.) to form a crumbly mass. Apply 4% malathion dust at 25 lbs. per acre or an equivalent amount of spray. Dust plants and field margins with 20% toxaphene or 2½% aldrin at 10-12 lbs. per acre or use an equivalent amount of spray not later than 4 weeks before cutting.
Soil Pests	Grubs White-fringed beetle	Apply parathion at 1 lb. (actual) per acre or aldrin at 2 lbs. (actual) per acre or chlordane at 4 to 6 lbs. (actual) per acre. Keep livestock off for at least 2 weeks, or longer if material is still visible. Apply DDT at 10 lbs. (actual) per acre or dieldrin at 4 lbs. (actual) per acre to soil. Keep livestock off for at least 2 weeks, or longer if material is still visible.

Control of Pests of Field and Forage Crops — 1955—(continued)

Small Grains	Greenbug	Apply adequate nitrogen, permitting plants to outgrow the injury. Where adequate N has not been supplied, parathion at $\frac{1}{4}$ lb. (actual) or malathion at 1 lb. (actual) may be applied.
	Armyworms	Dust or spray with toxaphene at 2 to 3 lbs. per acre not later than 4 weeks before harvest or with methoxychlor at 2 lbs. per acre not later than 1 week before harvest
	Spittlebugs	Apply lindane at $\frac{1}{4}$ lb. per acre not later than 2 weeks before harvest.
	Hessian fly	Sow late enough in the fall so that wheat will not be up until after flies have emerged and died. A map showing planting dates may be obtained from the Extension Entomologists.
Milo	Corn earworm	Use DDT at 1 to 2 lbs. (actual) per acre not later than 4 weeks before harvest.
"Growing" corn Root pests	Southern corn rootworm	Dust 5% DDT or 5% chlordane at 30 lbs. per acre into the furrow at the time of planting. Other materials such as aldrin, dieldrin and heptachlor may be effective for furrow treatment. Seed coating with DDT, or lindane, may be helpful.
	Wireworms	Heptachlor, aldrin, or dieldrin at 2 to 4 lbs./A. or chlordane at 4 to 6 lbs./A. disc'd well into soil ahead of planting. Heavier soils may require the higher dosage applications. Clear ground before applying. If infestation is light, some control possible by coating seed with 75% lindane at $1\frac{1}{4}$ oz. per bushel of seed.
Young Corn	Budworms (Fall armyworm and corn earworm)	Dust 5% or 10% DDT at 15 lbs. per acre directly on the row. See also under "Corn Earworm."
	True armyworm Fall armyworm	Apply poison bran bait described under "Forage Crops," or dust with 10% DDT or 20% toxaphene at 10 to 20 lbs. per acre or use equal amount of either as a spray. Treat before worms become numerous.
	Flea beetles	Dust with 5% DDT at 15 lbs. per acre or equivalent amount in spray form.
	Billbugs	Dust with any one of the following: 2 $\frac{1}{2}$ % aldrin, 2 $\frac{1}{2}$ % heptachlor, or 5% chlordane. Apply to cleared land before planting at 30 lbs. per acre. Some control may be obtained by dusting corn as it breaks through the ground. Do not plant corn after corn or next to last year's corn.

