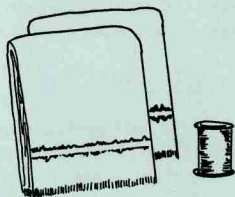


Making A Clever Beach Blouse

How would you like to make a cool and comfortable sleeveless blouse to wear to the beach this summer? You can make a pretty one from two colorful towels. It is easy to make, fun to wear, and will be easy to keep clean and fresh.

YOU WILL NEED:

1. TOWELS - Choose two 22" x 48" terry cloth towels in the same color and design. They may be a solid color or printed.
2. THREAD - One spool of thread to match your towels.



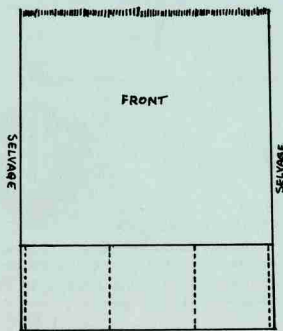
TO MAKE YOUR BEACH BLOUSE:

Cut 8 inches from the length of one towel. Make a 1/2-inch hem in the longer part of the towel. Stitch the hem on the machine.

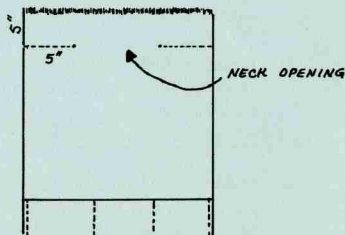
If the towels are fringed, trim fringe from one end of the other towel. Make a 1/2-inch hem on the end of the towel you trimmed. This will be the FRONT.

To make pockets, in front of blouse, fold an 8-inch hem to the right side along the hemmed edge of the FRONT. Stitch this pocket in place along the selvage edges.

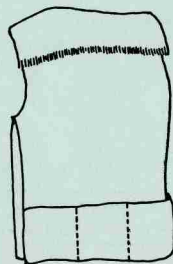
Measure in 7 inches from each selvage edge and make a row of machine stitching from folded edge to the top edge of the hem. This makes 3 pockets.



To join shoulder seams, place the FRONT AND BACK with the wrong sides together, matching the fringed ends. Measure down 5 inches from the fringed ends and stitch from selvage toward center making each row of stitching 5-inches long. This should leave 12 inches for a neck opening. Turn down fringed edges for collar effect.



With right sides together, measure 8 or 10 inches-down from the shoulder seam. Stitch from this mark to the top of pockets. This makes the side seams.



A Reversible Scarf

A 3-cornered scarf is easy to make and will be handy to keep your hair neat. Maybe you would like to make several scarfs as gifts for your friends.

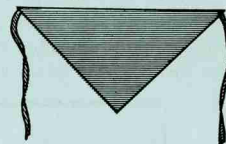
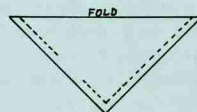
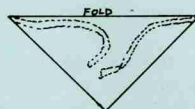
You will need:

- . Any soft cotton fabric - 1 square 17" x 17" and 2 ties, each 1" wide and 10" long
- . Thread the color of your fabric



To Make Your Scarf:

1. Press an 1/8" hem along each along each long side of the 2 ties.
2. Fold each tie matching the hemmed edges. Machine-stitch close to the folded edge.
3. Fold the square of fabric to form a triangle with the right sides of the fabric together.
4. Pin the ties to the two corners as shown in the picture.
5. Make a 1/4" seam around the two cut sides, leaving a 3-inch opening to turn the scarf right-side-out. The ties should be inside the scarf while you are stitching.
6. Pull both ties out through the opening and keep pulling until your scarf is right-side-out. Stitch the opening closed by hand.
7. Press your scarf, making sure the seam is exactly on the edge and doesn't show from either side.



Prepared by: Extension Clothing Specialist

Published by

THE NORTH CAROLINA AGRICULTURAL EXTENSION SERVICE

North Carolina State University at Raleigh and the U. S. Department of Agriculture, Cooperating. State College Station, Raleigh, N. C., George Hyatt, Jr., Director. Distributed in furtherance of the Acts of Congress of May 8 and June 30, 1914.

