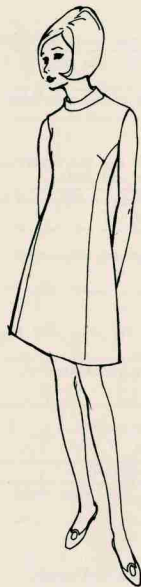


# YOUR ENTRY IN THE 4-H DRESS REVUE

In planning your Dress Revue garment, the following suggestions should help you:

1. **Plan** your garment carefully so that it will:
  - a. Be appropriate for your age and activities.
  - b. Go with other items in your wardrobe particularly your accessories.
  - c. Give a total fashion effect.
2. **Select** a pattern that is:
  - a. A good line for your figure proportions.
  - b. A good style for your age and in keeping with current fashion trends.
  - c. Well chosen for the fabric being used.
  - d. Challenging to your sewing ability and yet not too difficult for your experience.
3. **Examine** your fabric and select one which is:
  - a. Of the best quality you can afford.
  - b. Suitable for the pattern you selected (weight and texture will permit it to assume construction requirements of pattern).
  - c. Of a good color for your skin, hair and eyes.
4. Choose trims wisely so they will be in harmony or good contrast with the fabric.
5. **Construction Techniques:**
  - a. The construction is neat and durable, and method chosen is an acceptable way to achieve construction details.
  - b. Seam finish should be appropriate for the fabric.
  - c. Consult your clothing leader or reliable books for information on construction methods.
  - d. Study the score sheet.
6. **Fit:**
  - a. Garment fits with ease through the hips.
  - b. Shoulders are not too wide across the back.
  - c. Darts are properly located—pointing in direction of the bulge where fullness is needed—as toward bust, hips and elbow.
7. **Pressing:**
  - a. Press as you sew.
  - b. Do not overpress.
  - c. Use correct iron temperature for fiber.
  - d. Press with grainline of the fabric.
  - e. Give your garment a thorough final pressing before it is modeled.
8. **Accessories:**
  - a. These should be harmonious with your garment.
  - b. Size and style should be suited to your figure and to the occasion which you plan to wear the garment.
  - c. Accessories chosen can be used with other clothes you have.
9. **Poise and Grooming:**
  - a. Learn to sit, stand and walk straight with head erect and shoulders back.
  - b. Wear make-up in keeping with your age. Don't overdo it.
10. **Evaluate Your Costume:**
  - a. Did you use good construction techniques?
  - b. Is the garment clean and neatly pressed?
  - c. Does it give an attractive overall appearance?
  - d. Are your accessories well chosen?
  - e. Study the score sheet and see how your garment measures up.



# SCORE SHEET FOR YOUR GARMENT

These are some points a judge will look for in your garment. Check your work. See how you "measure up."

I. General Appearance—40%	Yes	No
<b>A. Fit</b>		
a. Free from unnecessary wrinkles		
b. Easy in fit—not too tight or too loose		
c. Correct width across shoulders		
<b>B. Pressing</b>		
a. Fabric smooth and flat, especially around seams and darts		
b. Fabric not shiny or discolored by incorrect pressing		
<b>C. Cleanliness—garment clean and neat</b>		
<b>D. Accessories</b>		
a. Appropriate for you and your costume		
b. Improves the appearance of costume		
<b>E. Your personal grooming</b>		
a. Good posture		
b. Hair neatly combed		
c. Skin, hands, and nails clean		
<b>II. Appropriateness of Design, Color, Fabric and Trimming 25%</b>		
<b>A. Design suitable for you and your age</b>		
<b>B. Fabric</b>		
a. Appropriate for style garment		
b. Easy to care for		
c. Good quality		
<b>C. Color</b>		
a. Appropriate for your personality		
b. Looks good with your skin, eye and hair coloring		
<b>D. Trimming</b>		
a. Improves appearance of garment		
b. Appropriate for fabric color and style of garment		
c. Requires same care as garment		

III. Workmanship—35%	Yes	No
<b>A. Seams and seam finishes</b>		
a. Stitched straight		
b. Seam allowances even		
c. Type seam suitable for fabric		
d. Type seam finish suitable for fabric		
<b>B. Stitching</b>		
a. Correct length		
b. Tension correct		
c. Hand stitches neat		
<b>C. Darts</b>		
a. Stitched straight		
b. Smooth and free from puckers		
c. Thread secure at tip		
<b>D. Gathers, tucks, and pleats evenly placed</b>		
<b>E. Collars and cuffs</b>		
a. Edges smooth and pressed		
b. Edge seamline pressed slightly to underside		
c. Corners sharp		
<b>F. Sleeves</b>		
a. Sleeve cap smooth		
b. Seam clipped where necessary		
<b>G. Fasteners</b>		
a. Buttons suited to fabric		
b. Buttons sewn securely		
c. Buttonholes neat and even		
d. Style fasteners correct		
e. Zipper evenly stitched		
f. Placket lies flat		
g. Invisible as possible		
<b>H. Waistline and belt</b>		
a. Seam lies flat and smooth		
b. Darts and seams match in skirt and bodice		
c. Belt good style for garment and your figure		
d. Self-covered belt neatly made		
<b>I. Hems</b>		
a. Suitable width		
b. Even in width		
c. Seams pressed open inside hems		
d. Correct stitch and hem finish for fabric and style		
e. Stitching invisible from right side		

Prepared by Ruby T. Miller, Clothing Specialist

Published by

**THE NORTH CAROLINA AGRICULTURAL EXTENSION SERVICE**



North Carolina State University at Raleigh and the U. S. Department of Agriculture, Cooperating.  
State College Station, Raleigh, N. C., George Hyatt, Jr., Director. Distributed in furtherance of the  
Acts of Congress of May 8 and June 30, 1914.