

N. C. STATE

VS.

DUKE

October 23, 1954

8:00 P.M.

Riddick Stadium

Price 50 Cents

Why Your Dollar Buys More in SYLVANIA TV



MORE PICTURE CLARITY...MORE GENUINE ECONOMIES...MORE CABINET BEAUTY...
MORE EYE COMFORT, TOO, WITH—



HALOLIGHT

*The Frame of Light
That's Kinder to Your Eyes*

● 1955 Sylvania TV brings you the world's finest television—with savings that will delight your pocketbook!

Brilliant new Super PHOTOPOWER Chassis assures clearer pictures, easier operation—saves tube wear, service and electricity.

And only Sylvania brings you HALOLIGHT—TV's greatest eye comfort feature. In every way, you get more for your money in Sylvania TV!



The LOMBARD—Super Deluxe 21" Console with HALOLIGHT, Front Dual Speakers, Super PHOTOPOWER Chassis, Silver Screen 85 Aluminized Picture Tube. In Mahogany Veneer and Blonde Korina.



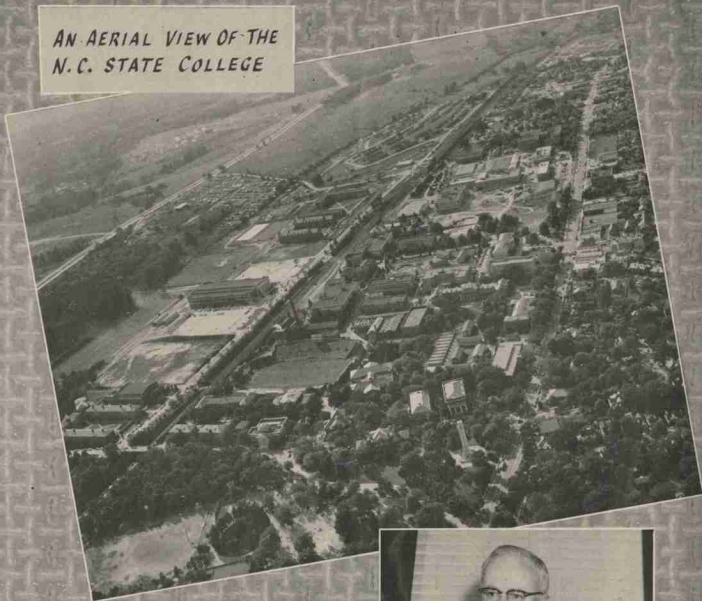
The FAIRFAX—Super Deluxe 21" Table Model with HALOLIGHT, Front Speaker, Super PHOTOPOWER Chassis, Silver Screen 85 Aluminized Picture Tube. In Mahogany Veneer or Blonde Korina.

21" Models **\$169⁹⁵**
Slightly Higher West and South

HALOLIGHT and Super PHOTOPOWER are Sylvania Trademarks

SYLVANIA TELEVISION

AN AERIAL VIEW OF THE
N.C. STATE COLLEGE

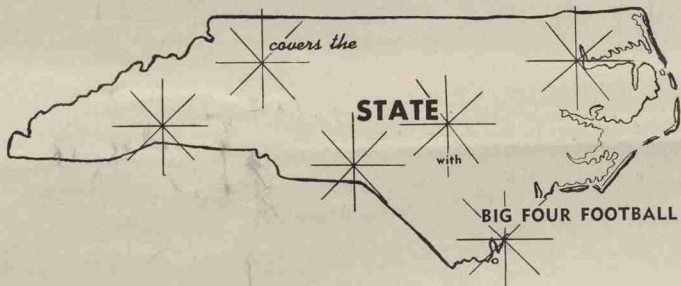


DR. C. H. BOSTIAN, *Chancellor*
N.C. STATE COLLEGE



Every Saturday

THE TOBACCO SPORTS NETWORK



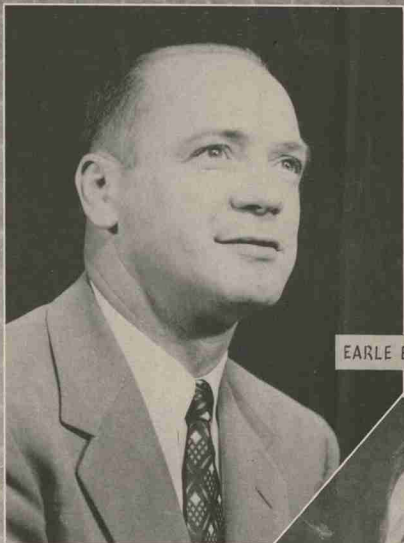
hear RAY REEVE

and

Bill Currie

on your NEARBY TSN Station

N C STATE



EARLE EDWARDS - *Head Football Coach*



ROY B. CLOGSTON - *Athletic Director*



RALEIGH SEA FOOD COMPANY

The Finest Seafood in Season – Fresh Daily

★ ★ ★

PROMPT DELIVERY SERVICE

★ ★ ★

CORNER DAVIE and EAST STREETS

★ ★ ★

Phones 7748-7749-7740



AL MICHAELS
Backfield Coach

CAREY BREWBAKER
Line Coach

EARLE EDWARDS
Head Coach

PAT PEPLER
Ass't. Coach

BILL SMALTZ
Freshman Coach



MERLE McINTOSH - Trainer

N. C. STATE FOOTBALL STAFF

State's New Head Coach . . . EARLE EDWARDS

The choice of Earle Edwards, former end coach at Michigan State and for 15 years line coach at Penn State, as North Carolina State's new head football coach has been hailed in all quarters as an outstanding selection. Edwards' appointment was announced on Feb. 9 by Chancellor Carey Bostian under a three-year contract.

Edwards, 46-year-old native of Greensburg, Pa., has an extensive background both as player and coach. After three outstanding years at Greensburg High, Edwards enrolled at Penn State where he starred at end for three seasons, 1929-30 and 1931. After his graduation in Industrial Engineering, Edwards worked at his profession for two years at Lambertville, N. J., then entered the coaching field at Princeton (N.J.) High as an assistant for one year. In 1934 after a season as head coach at Edensburg, Pa. high school, Edwards returned to Penn State as an assistant coach under Bob Higgins.

For the next 14 years through 1948, Edwards tutored the Penn State line, working particularly with the ends. He was hailed as one of the finest end coaches in the country and in 1949 was appointed end coach under Biggie Munn at Michigan State, from 1949 through 1953 Edwards was end coach and chief scout for the Michigan State Spartans, who were twice undefeated during the period and last year were Rose Bowl champions.

Edwards came to his new position at State highly recommended by everyone, including such men as Ralph Young, Michigan State Athletic Director, Benny Ooster-

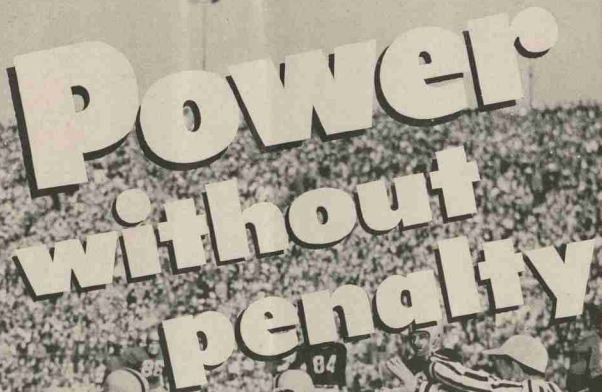
baan, head coach at the University of Michigan, Biggie Munn, Michigan State football coach, Dr. John Hannah, president of Michigan State and dozens of other well known personalities who were all high in their praise of Edwards' ability.

Besides his degree in Industrial Engineering, Edwards holds a Master's degree in Education. He has served on the physical education staffs at both Penn State and Michigan State.

At N. C. State Edwards began the job of rebuilding the Wolfpack football fortunes with the off-season practice period from April 5 to May 5. A brand new system of play, termed a "multiple-offense," which was utilized at Michigan State, is being taught the State team. The system operates from an unbalanced line using the basic T-formation with both single and double-wing variations.

Already Edwards has made innumerable friends at State and his personality and winning smile have won him many rabid supporters despite his short time on the campus. He has gone about the task of getting ready for the 1954 season with a grim determination to give his best to get the job done successfully.

The new State coach is a family man with three children, Jack, 21, a senior at Michigan State, Mary Ann, a sophomore at Michigan State and Bob a junior in high school.



Power without penalty

In a football game, the power of the whole team can be wasted by penalties.

So, too, in motor fuels. An additive in a premium gasoline can cause a harmful metallic deposit—can make your car pay a penalty in lost power.

Amoco-Gas has no additive because it needs none. It's pure petroleum. It delivers power without penalty. Just test it!

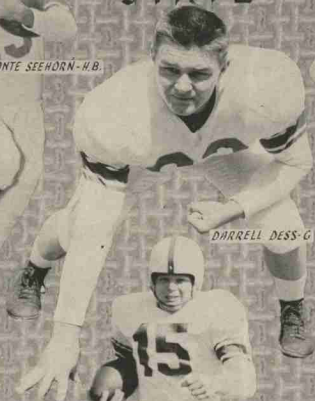
AMOCO
GAS

AMERICAN OIL COMPANY

N C STATE



MONTÉ SEEHORN-H.B.



DARRELL DESS-G.



AL D'ANGELO-G.



BILLY FRANKLIN-Q.B.



HENRY SPIVEY-T.



TED KILYK-H.B.



ARCHIE FAIRES-Q.B.

the label that distinguishes the finest
Apparel and Accessories wherever
Carolinians gather

Judy Taylor Co.

*The Show Place
of the Carolinas*



PINE STATE

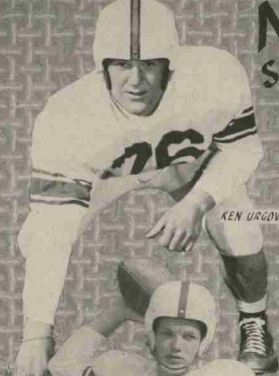
MILK ★ ICE CREAM

DAIRY PRODUCTS

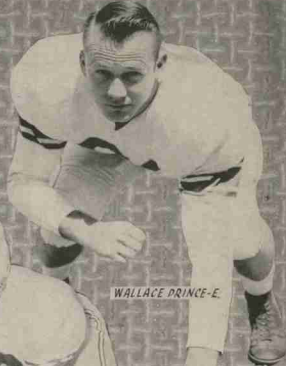
PINE STATE CREAMERY
RALEIGH ★ OXFORD
SOUTHERN ICE CREAM CO.
HENDERSON

SERVED IN NORTH CAROLINA SINCE 1919

N C STATE



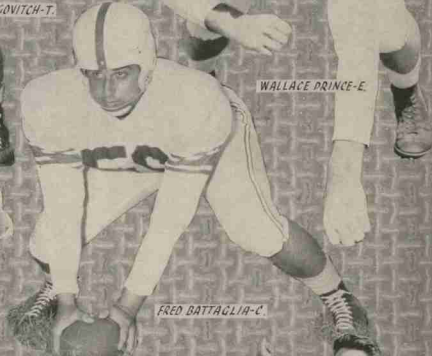
KEN URGOVITCH-T.



WALLACE DRINCE-E.




EDDIE WEST-Q.B.




FRED BATTAGLIA-C.



PERCY RIDEN-T.



DON LANGSTON-F.B.



ED GELSDORF-H.B.

Get The Best - Get Sealtest

Southern Dairies

Sealtest
ICE CREAM

NORTH CAROLINA PLANTS

ALBEMARLE
ASHEVILLE
BREVARD

BURLINGTON
BRYSON CITY
CHARLOTTE

DURHAM
ELIZABETH CITY
FAYETTEVILLE

GREENSBORO
RALEIGH
ROCKY MOUNT

SALISBURY
WILSON
WINSTON-SALEM

BEST WISHES TO THE WOLFPACK



SANDERS
MOTOR COMPANY

CARS
TRUCKS
TRACTORS
IMPLEMENTS
GENUINE PARTS
USED CARS AND TRUCKS
BAKED ENAMEL PAINT SHOP
AUTHORIZED FACTORY SERVICE
MODERN BODY AND TRIM SHOP

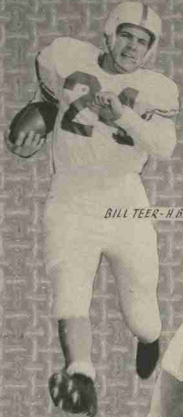
YOUR FRIENDLY FORD DEALER AT

329 S. Blount St.

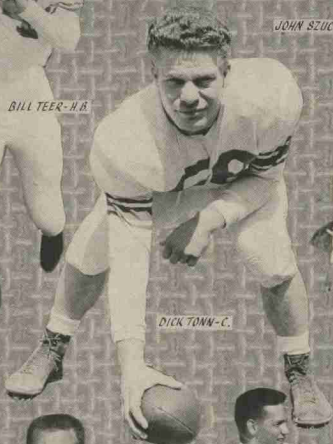
HAROLD PITSER
General Manager

RALEIGH, N. C.

N C STATE



BILL TEER-H.B.



DICK TONN-C.



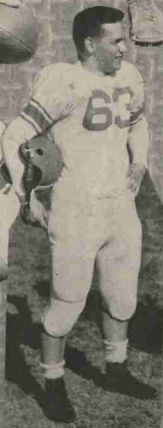
JOHN SZUCJAN-T.



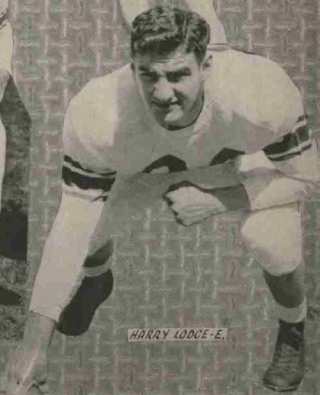
JIM MEADLOCK-H.B.



J.W. FRANKOS-C.



JOHN BAGONIS-G.



HARRY LODGE-E.

N. C. STATE



GEORGE MARINKOV
L.H.



HENRY BROWN
R.E.



JOHN BARCHIESI
R.G.



MIKE HARDONE
L.G.



JOHN ZUBATY
R.H.



HARRISON MAKEEVER
F.B.

Carolina Builders Corporation

B. B. BENSON, PRES.—C. L. BENSON, TREAS.

J. Y. HORNBUCKLE

※ ※ ※

COAL — WATERPROOFING — BUILDING MATERIALS — LUMBER

MILLWORK — ATHEYS PAINTS — RUSSWIN HARDWARE

※ ※ ※

217 N. Dawson Street, Phone 7563, Raleigh, N. C.

TRAILWAYS ALWAYS

"Going Your Way"

The favorite of college students for 29 years. Trailways provides more travel pleasure at less cost per mile. Trailways connects leading campuses with over 80% of North Carolina's cities and towns, with connection to the rest.

Trailways now provides direct no-change service from North Carolina points to New York, Chicago, Memphis, Miami, Dallas, and Atlanta. It serves the nation with 78,000 miles of scenic highway.

FREQUENT DEPARTURES · CHARTERS
PLEASURE-PLANNED TOURS



Carolina TRAILWAYS

Again this year . . .

96.1 MC
ON
FM
DIAL

WNAO

850 KC
ON
AM
DIAL



JIMMY SIMPSON
brings you
play by play on
Football and Basketball

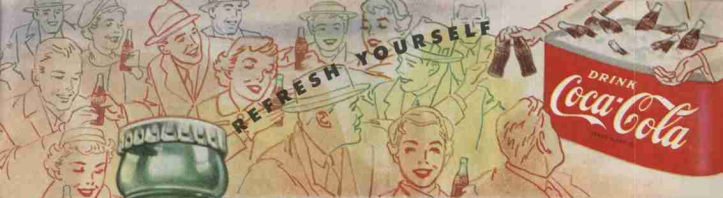
Is Following the
Wolfpack at home
and away in sports

VIEW "SPORTS REPORT" ON CHANNEL 28

7:15-7:30 P.M. MONDAY THROUGH FRIDAY

We're a "fresh Up" family!





ENJOY THE GAME. PAUSE AND



REFEREES' SIGNALS

1. Offside
2. Illegal procedure or position
3. Illegal motion
4. Illegal shift
5. Illegal substitution
6. Delay of game
7. Personal foul
8. Roughness and piling on
9. Clipping
10. Roughing the kicker
11. Unsportsmanlike conduct
12. Defensive holding
13. Illegal use of hands and arms
14. Intentional grounding
15. Illegally passing or handing ball forward
16. Forward pass or kick catching interference
17. Ineligible receiver down field on pass
18. Ball illegally touched, kicked or batted
19. Incomplete forward pass, penalty declined, no play or no score
20. Crawling, helping the runner or interlocked interference
21. Ball dead; if hand is moved from side to side; touchback
22. Touchdown or field goal
23. Safety
24. Time-out
25. First down
26. Ball ready-for-play
27. Start the clock or no more time-outs allowed

COPYRIGHT 1954, THE COCA-COLA COMPANY

CAPITAL COCA COLA BOTTLING CO. RALEIGH, N. C.

DUKE

PROBABLE STARTING LINEUP

NO.	NAME	POSITION
20	Sorrell	LE
48	Campbell	LT
75	Birchfield	LG
53	Palmer	C
11	Torrance	RG
60	Knotts	RT
67	Kocourek	RE
36	Barger	QB
30	Pascal	LH
34	Bass	RH
17	Lutz	FB

DUKE UNIVERSITY SQUAD

10	Dale Boyd, QB	55	Bob Murray, C
11	R. Torrance, G	56	Milt Konicek, T
14	Snowberger, C	60	Doug Knotts, T
15	R. Stallings, E	61	J. Madden, G
16	F. Beasley, HB	63	J. Hardin, E
17	W. Lutz, FB	64	Bill Edmunds, G
18	N. Kredich, HB	65	Chuck Gwinn, T
19	Bob Murray, QB	66	Bud Stanley, G
20	Sonny Sorrell, E	67	Kocourek, E
22	Bill Conner, HB	68	C. Klinger, G
24	Bill Hagie, QB	69	D. Bruton, G
25	McElhaney, FB	70	McGaughey, T
26	B. Blaney, HB	71	Jim Nelson, G
27	B. Aldridge, FB	72	H. Conner, T
30	Bob Pascal, HB	73	Roy Hord, T
31	Ed Post, HB	74	Martin Rose, G
34	Buddy Bass, HB	75	J. Birchfield, G
35	Tracy Moon, E	76	Tom Topping, T
36	Jerry Barger, QB	77	Dan Cox, T
38	Jurgensen, QB	78	Ronnie Falls, C
41	Jim Harris, FB	81	David Hurm, E
42	McKeithan, HB	82	Johnny Long, E
43	Thompson, HB	83	S. Deloatch, T
46	Sam Eberdt, FB	84	Bob Benson, E
48	Campbell, T	85	G. Atherholt, E
50	Fesperman, G	88	L. Black, E
53	J. Palmer, C		

CHESTERFIELD

AMERICA'S MOST POPULAR
2-WAY CIGARETTE

Either Way - THE QUALITY YOU WANT!



JEAN AND JOAN
THE CORBETT TWINS

CHESTERFIELD
BEST FOR YOU

N. C. STATE

PROBABLE STARTING LINEUP

NO.	NAME	POSITION
78	Harry Lodge	LE
83	Ben Kapp	LT
64	Mike Nardone	LG
50	Dick Tonn	C
68	Al D'Angelo	RG
75	C. M. Price	RT
85	Henry Brown	RE
17	Eddie West	QB
20	George Marinkov	LH
43	John Zubaty	RH
33	Don Langston	FB

THE WOLFPACK SQUAD

12	Billy Franklin	62	Charles Davis
16	Joe Barringer	63	John Barchiesi
17	Eddie West	64	Mike Nardone
20	George Marinkov	65	Darrell Dess
22	Ted Kilyk	66	John Bagonis
23	Alan Henry	67	John Szuchan
24	Bill Teer	68	Al D'Angelo
30	H. MacKeever	70	Percy Riden
31	David Meloni	71	Tony Leone
32	James Meadlock	72	Ken Urogovitch
33	Don Langston	73	Ben Kapp
40	Ed Gelsdorf	74	Henry Spivey
41	Jack Reed	75	C. M. Price
42	Monte Seehorn	76	Bob Dunnigan
43	John Zubaty	80	Ed Armit
50	Dick Tonn	81	John Lowe
51	Wallace Prince	84	John Daskal
52	J. W. Frankos	85	Henry Brown
53	David Vivino	86	Ronnie Gall
60	Dickie Lewis	87	Bob Becker
61	Jim Frazier	88	Harry Lodge

David McGuire

CHESTERFIELD

LARGEST SELLING CIGARETTE
IN AMERICA'S COLLEGES

FOR TASTE AND MILDNESS...THEY SATISFY MILLIONS!



PENALTIES

LOSS OF FIVE YARDS

1. Taking more than five times out during either half (except for replacement of injured player).
2. Illegal delay of game.
3. Failure to complete substitution before play starts.
4. Violation of kickoff formation.
5. Player out of bounds when scrimmage begins.
6. Putting ball in play before Referee signals "Ready-for-play".
7. Failure to maintain proper alignment of offensive team when ball is

snapped. Also, backfield man illegally in motion.

8. Offside by either team or encroachment on neutral zone.
9. Attempt to draw opponents offside.
10. Crawling by runner.
11. Illegal forward pass (includes intentional grounding of forward pass). Also loss of down.
12. Taking more than two steps after Fair Catch is made.
13. Player on line receiving snap.
14. Any violation of the scrimmage formation.

LOSS OF FIFTEEN YARDS

15. Team not ready to play at scheduled time.
16. Violation of rules during intermission.
17. Illegal return of suspended player.
18. Interference by member of offensive team with defensive player making pass interception. (Also loss of down.)
19. Interference with opportunity of player of receiving team to catch a kick.
20. Illegal use of hands or arms by offensive player.

21. Tackling or blocking defensive player who has made fair catch.
22. Roughing the kicker.
23. Piling up, hurdling, clipping.
24. Tackling player out of bounds, or running into player obviously out of play.
25. Coaching from sidelines.
26. Failure to stop one full second following shift.
27. Defensive holding.
28. Invalid Signal for Fair Catch.

OTHER PENALTIES

29. Striking an opponent with fist, forearm, elbow or locked hands, kicking or kneeling — Mandatory disqualification of offending player plus loss of fifteen yards.
30. Foul within the one yard line—half the distance to the goal.
31. Interference by defensive team on forward pass—passing team's ball at spot of foul.
32. Forward pass being touched by ineligible receiver beyond the line of

scrimmage—loss of fifteen yards from spot of preceding down and loss of a down.

33. Illegal touching of kicked ball within opponent's ten yard line — touchback.
34. Flagrantly rough play or unsportsmanlike conduct — Mandatory disqualification plus loss of fifteen yards.
35. Eligible pass receiver who goes out of bounds and later touches a forward pass — loss of down.



THE DUKE BLUE DEVILS



E. M. CAMERON
Director Physical Education and Athletics
Duke University



WILLIAM D. MURRAY
Head Football Coach
Duke University



TRACY LEON MOON . . .
"Tracy" . . . weight — 158
height — 6-0, class — senior,
course — economics, home-
town—Durham, N. C., born
—April 4, 1933 . . . was All-
State griddler at Durham High
School . . . chief target for
quarterback Worth Lutz on
two state championship teams
there . . . letter winner in
1952 and 1953 . . . one of the
lightest men on the team.

JERRY JOHN KOCOUREK,
JR. . . . "Jerry" . . . weight
— 197, height — 6-0, class —
junior, course—business ad-
ministration, hometown—
Berwyn, Ill., born—July 4,
1934 . . . attended J. Sterling
Morton High School at Cicero,
Ill. . . . played all sports,
earning a total of nine letters
. . . . starred with 1952 fresh-
man team . . . varsity letter
winner 1953.



JESSE JAMES BIRCHFIELD
. . . . "Jesse" . . . weight—207,
height — 6-1, class — junior,
course — general, hometown
—Elizabethton, Tenn., born—
July 21, 1931 . . . attended
Elizabethton High School,
where he won All-Conference
and All-State honors in his
final two seasons . . . played
high school basketball and
track . . . discharged from
Army and National Guard
duty early in 1952, he entered
school in February 1952 . . .
made several All-Service ses-
sions . . . was a two-way performer in 1952 . . .
teamed with Ed Meadows at tackle in 1953.

CHRISTIAN ADOLPH JUR-
GENSEN, III . . . "Sonny" . . .
weight—202, height—5-11, class
—sophomore, course — business
administration, hometown—Wil-
mington, N. C., born—Aug. 23,
1934 . . . attended New Hanover
High School in Wilmington
where he was an All-State foot-
ball player and captain of the
team . . . played in Charlotte's
Shrine Bowl . . . also played
basketball and baseball and
captained both teams . . . one of
the finest split-T quarterbacks
ever to enroll at Duke . . . sensa-
tional year with unbeaten 1953
fresh . . . can run, pass, and
kick with the best of them.



lections . . . was a two-way performer in 1952 . . .
teamed with Ed Meadows at tackle in 1953.

fresh . . . can run, pass, and
kick with the best of them.

JOB P. WYATT & SONS COMPANY

RALEIGH, N. C.

★ ★ ★ ★

**HARDWARE
PAINT**

**IMPLEMENTS
SEEDS**



Compliments

**TIRE SALES & SERVICE
COMPANY**



Your

Goodyear and General Electric
Dealer in Raleigh



Flowers By—

FALLON'S

—Are Distinctive



Phone 8347

205 FAYETTEVILLE STREET

N. C. State Football Squad

12	Billy Franklin	QB 185 Soph.	Farmville, Va.
16	Joe Barringer	QB 183 Jr.	Jacksonville, N. C.
17	*Eddie West	QB 190 Jr.	Alexandria, Va.
20	George Marinov	LH 165 Soph.	Lebanon, Pa.
22	*Ted Kilyk	LH 175 Jr.	Phoenixville, Pa.
23	Alan Henry	C 175 Soph.	Long Island, N. Y.
24	*Bill Teer	LH 176 Sr.	Hillsboro, N. C. ✓
30	Harrison Makeever	FB 195 Soph.	Sanford, N. C.
31	David Meloni	FB 175 Soph.	Oakmont, Pa.
32	James Meadlock	FB 170 Jr.	Taylorsville, N. C.
33	*Dan Langston	FB 188 Sr.	Lexington, Ky. ✓
40	Ed Gelsdorf	RH 180 Soph.	Derry, Pa.
41	Jack Reed	RH 175 Soph.	Sylva, N. C.
42	*Monte Seehorn	RH 176 Jr.	Marion, N. C.
43	John Zubaty	RH 182 Jr.	Blairsville, Pa.
50	*Dick Tann	C 200 Jr.	Cleveland, Ohio
51	Wallace Prince	C 188 Soph.	Cairo, Ga.
52	J. W. Frankos	C 198 Sr.	Portsmouth, Va.
53	David Vivino	C 180 Sr.	Paterson, N. J. ✓
60	Dickie Lewis	G 190 Soph.	Wilmington, N. C.
61	*Jim Frazier	G 190 Sr.	Goldsboro, N. C. ✓
62	*Charles Davis	G 190 Sr.	Goldsboro, N. C. ✓
63	John Barchiesi	G 185 Soph.	Greensburg, Pa.
64	*Mike Nardone	G 175 Jr.	Peekskill, N. Y.
65	Darrell Dess	G 189 Soph.	New Castle, Pa.
66	*John Bagonis	T 195 Jr.	Luzerne, Pa.
67	John Suchan	G 200 Soph.	Phoenixville, Pa.
68	*Al D'Angelo	G 186 Jr.	Greensburg, Pa.
70	Percy Riden	T 195 Sr.	Lewistown, Pa.
71	Tony Leone	T 200 Jr.	Bronx, N. Y.
72	Ken Urgovitch	T 195 Sr.	Garfield, N. J.
73	*Ben Kapp	T 200 Sr.	Paterson, N. J.
74	*Henry Spivey	T 200 Soph.	Weldon, N. C.
75	*C. M. Price	T 200 Jr.	Prospect, Va.
76	*Bob Dunnigan	T 198 Soph.	Burgaw, N. C.
80	Ed Armit	E 185 Soph.	Turtle Creek, Pa.
81	John Lowe	E 183 Soph.	Delmar, Dela.
84	John Daskal	T 195 Soph.	Fayetteville, N. C.
85	Henry Brown	E 180 Jr.	Lexington, N. C.
86	Ronnie Gall	E 185 Soph.	New Castle, Pa.
87	Bob Becker	E 186 Jr.	Newark, N. J.
88	*Harry Lodge	E 175 Sr.	Blaunox, Pa. ✓

* Denotes 1953 lettermen.

Duke University Roster

15	Riley Stallings	E 185 Jr.	Durham
20	Sonny Sorrell	E 178 Jr.	High Point
35	Tracy Moon	E 158 Sr.	Durham ✓
63	Jim Hardin	E 186 Soph.	Canton
67	Jerry Kacurek	E 197 Jr.	Berwyn, Ill.
81	David Hum	E 186 Soph.	Newark, Del.
82	Johnny Long	E 204 Soph.	Shelby
84	Bob Benson	E 201 Soph.	Sanford
85	Geo. Atherholt	E 192 Soph.	Norwood, Pa.
88	Leonard Black	E 182 Soph.	Fayetteville
48	Fred Campbell	T 209 Jr.	Swathmore, Pa.
56	Milt Konicek	T 232 Soph.	Cicero, Ill.
60	Doug Knotts	T 193 Jr.	Albemarle
65	Chuck Gwinn	T 195 Jr.	Norfolk, Va.
70	Bob McGaughey	T 212 Soph.	Kittanning, Pa.
72	Harry Conner	T 198 Jr.	Oak Ridge, Tenn.
73	Roy Hard	T 216 Soph.	Charlotte
76	Tom Topping	T 202 Soph.	Roanoke Rapids
77	Dan Cox	T 215 Soph.	Gainseville, Fla.
83	Sidney Deloatch	T 203 Jr.	Roanoke Rapids ✓
11	Ralph Torrance	G 198 Sr.	Macon, Ga.
50	W. D. Fesperman	G 217 Jr.	Winston-Salem
61	John Madden	G 199 Soph.	Beaver Falls, Pa.
64	Bill Edmunds	G 198 Soph.	Roanoke, Va.
66	Buddy Stanley	G 201 Soph.	Asheboro
68	Charlie Klingler	G 202 Soph.	Oakhurst, N. J.
71	Jim Nelson	G 192 Jr.	Winston-Salem
74	Martin Rose	G 214 Jr.	Lawrence, N. Y.
75	Jesse Birchfield	G 207 Jr.	Elizabethton, Tenn.
14	Dan Snowberger	C 197 Soph.	New Brighton, Pa.
53	Johnny Palmer	C 185 Sr.	Lynchburg, Va. ✓
78	Ronnie Falls	C 198 Jr.	High Point
10	Dale Boyd	Q 171 Jr.	Huntington, W. Va.
24	Bill Hagie	Q 168 So.	Elizabethton, Tenn.
36	J. Barger (Capt.)	Q 176 Sr.	Salisbury ✓
38	Sonny Jurgensen	Q 202 Soph.	Wilmington
16	Fred Beasley	H 150 Soph.	Henderson
18	Nick Kredich	H 188 Soph.	Elmwood Park, Ill.
22	Bill Conner	H 168 Sr.	Roanoke, Va.
26	Bernie Blaney	H 159 Soph.	Newark, Del.
30	Bob Pascal	H 183 Jr.	Bloomfield, N. J.
31	Ed Post	H 193 Soph.	Stanhope, N. J.
34	Buddy Bass	H 185 Soph.	Durham
42	Nick McKeithan	H 193 Sr.	Lumberton
43	Bill Thompson	H 190 Soph.	Dunn
17	Worth Lutz	F 186 Sr.	Durham ✓
25	H. McElhaney	F 197 Soph.	Burgettstown, Pa.
27	Bryant Aldridge	F 192 Jr.	Kinston
41	Jim Harris	F 211 Soph.	Scranton, Pa.
46	Sam Eberdt	F 210 Sr.	Arlington, Va. ✓

BARNETTE'S ESSO SERVICE

"Happy Motoring"



434 Fayetteville St.

Raleigh, N. C.

THE DUKE BLUE DEVILS



MARTIN MORTON ROSE . . . "Marty" . . . weight—214, height—6-0, class—junior, course—pre-legal, hometown—Lawrence, N. Y., born—Jan. 27, 1934 . . . stand-out griddler at Lawrence High School . . . won All-Scholastic football award . . . showed well with junior varsity in 1952 . . . lettered with varsity in 1953.



FREDERICK JEROME BEASLEY . . . "Fred" . . . weight 150, height—5-11, class—sophomore, course—business administration, hometown—Henderson, N. C. born—Sept. 1, 1935 . . . played his prep football at Henderson High School . . . also played basketball and baseball . . . saw a lot of action with the 1953 Imps . . . is fast and if given an inch he is capable of going all the way.



JERRY HENRY BARGER . . . "Jerry" . . . weight—176, height—5-10, class—senior, course—business administration, hometown—Salisbury, N. C., born—Jan. 24, 1932 . . . All-State and All-Southern griddler at Salisbury High School . . . also an outstanding basketball player . . . took over number one quarterback job on Bill Murray's first Blue Devil team in 1951 . . . "freshman of the week" honors in conference for work against South Carolina in first college game . . . injured knee

in final game of frosh year and underwent operation . . . sidelined by injury to other knee during most of the 1952 season . . . was regular quarterback in 1953 . . . won Associated Press "Back of the Week" after Purdue game . . . elected captain of the 1954 team.

JOHN DOUGLAS KNOTTS

. . . "Doug" . . . weight—193, height—6-1, class—junior, course—education, hometown—Albemarle, N. C., born—July 29, 1934 . . . was an All-State, All-Southern and All-American griddler at Albemarle High School . . . is fourth of four brothers, all of whom have been Duke linemen . . . one of the Knotts brothers was Ernest, an All-American guard in 1944 and 1945 . . . other brothers are Jimmy and Don . . . all were guards except Doug . . . Doug saw limited varsity action as a linebacker in 1952 . . . was a reserve center in 1953 . . . shifted to tackle in spring drills.



EDWARD L. POST . . . "Ed" . . . weight—193, height—5-11, class—sophomore, course—business administration, hometown—Stanhope, N. J., born—April 4, 1935 . . . outstanding griddler at Roxbury High School in Saccasunna, N. J. . . . broken collar bone sidelined him for entire freshman season . . . showed up very well in spring drills.



ROBERT ANTHONY PASCAL . . . "Bob" . . . weight—183, height—5-11, class—junior, course—pre-medical, hometown—Bloomfield, N. J., born—July 20, 1934 . . . All-State football performer at Bloomfield High School . . . All-County in basketball and captain of the baseball team also . . . his father is coach there . . . saw very limited varsity action in 1952 . . . lettered in 1953.



WORTH ARTHUR LUTZ, JR.

. . . "Worth" . . . "Red" . . . "Worth A Million" . . . weight—186, height—6-0, class—senior, course—business administration, hometown—Durham, N. C., born—Feb. 6, 1933 . . . an All-State and All-Southern griddler on two state championship teams at Durham High School . . . also played basketball and baseball . . . an outstanding student . . . was class president his sophomore and junior years and president of the student body his senior year in high school . . . lettered on varsity as a freshman in 1951 . . . played defensive halfback . . . was named "Southern Conference Freshman of the Year" . . . in 1952 he took over the quarterback job and was an unanimous All-Southern choice and received some All-American mentions . . . hampered with knee injury during 1953 . . . alternated with Barger at quarterback in 1953 . . . shifted to fullback, a position he played one season in high school, during spring drills . . . president of Duke student government.



ERNEST BREVARD BASS, JR.

. . . "Buddy" . . . weight 185, height—6-1, class—sophomore, course—pre-medical, hometown—Durham, N. C., born—May 19, 1935 . . . captain of Durham High School's 1952 state championship team . . . won All-East, All-State, and All-Southern recognition . . . president of junior and senior classes in high school . . . did an excellent job with the powerful 1953 frosh . . . fast and powerful.



- STEEL -
FABRICATED
or
WAREHOUSED
from
RALEIGH STOCKS



ORNAMENTAL IRON

PEDEN



OFFICE — PLANT
AND WAREHOUSE
RALEIGH

Peanut Butter Sandwiches Sweet Fill Sandwiches

TAYLOR BISCUIT COMPANY

*MAKERS OF
TAYLORED TO TASTE
FOOD PRODUCTS*

Potato Chips

Peanut Butter

Your Money Buys More

At

LAND'S, Inc.



Raleigh's Leading

Credit Jewelers



137 Fayetteville Street

Tel. 2-3751

THE DUKE BLUE DEVILS



-LEONARD HUGH BLACK . . .
 "Len" . . . weight—182, height—6-1, class—sophomore, course—general hometown—Fayetteville, N. C., born—Feb. 19, 1935 . . . attended Fayetteville High School where he was an All-State performer . . . won most valuable football player award and most valuable athlete award—played in Charlotte's Shrine Bowl . . . co-captained the football and basketball teams . . . captained the baseball team.



BERNARD FRANCIS BLANEY . . . "Bernie" . . . "Bunny" weight—159, height—5-8, class—sophomore, course—education, hometown—Newark, Del., born—May 6, 1934 . . . excellent football player at Newark High School . . . also played baseball and basketball and ran track . . . saw limited duty with varsity in 1952 . . . dropped out of school in 1953 . . . returned to star in spring drills . . . put on a dazzling display of speedy broken field running.



FREDRICK MacGREGOR CAMPBELL, JR. . . "Fred" . . . weight—209, height—6-2, class—senior, course—political science, hometown—Swarthmore, Pa., born—April 19, 1932 . . . won All-State grid honors as an end at Swarthmore High School . . . also All-State performer in track . . . played basketball and lacrosse . . . varsity reserve in 1951 . . . missed 1952 season with injury . . . saw

service behind Meadows and Birchfield in 1953 . . . varsity wrestler in heavyweight division for three years . . . captain of the squad last year.



DARRELL FRANCIS SORRELL . . . "Sonny" . . . weight—178, height—6-0, class—junior, course—business administration, hometown—High Point, N. C., born—Nov. 21, 1933 . . . outstanding end at High Point High School . . . team got to state AAA finals his senior year . . . received All-State, All-Southern, and honorable mention All-American grid honors . . . in 1952 he saw limited varsity action

as a defensive halfback . . . shifted back to end in 1953 spring drills.

SIDNEY COLUMBUS DE LOATCH, JR. . . "Sidney" . . . weight—203, height—6-1, class—junior, course—engineering, hometown—Roanoke Rapids, N. C., born—Sept. 28, 1932 . . . attended Roanoke Rapids High School, where he captained the football team for two years . . . also played basketball and baseball . . . played with junior varsity in 1952 . . . saw reserve varsity action in 1953.



DONALD MARSHALL FALLS . . . "Ronnie" . . . "Monk" . . . weight—198, height—6-0, class—junior, course—political science, hometown—High Point, N. C., born—Feb. 18, 1934 . . . an All-State griddier at High Point High School . . . saw limited varsity service in 1952 as a defensive linebacker . . . lettered in 1953 while dividing his time between center and fullback . . . shifted back to center since Lutz was moved to fullback.



JOHN ELISHA PALMER . . . "Johnny" . . . weight—185, height—5-10, class—senior, course—education, hometown—Lynchburg, Va., born—Jan. 25, 1931 . . . attended E. C. Glass High School in Lynchburg, where he was All-State in football . . . also played basketball and won All-State recognition . . . in 1952 he was a starting defensive linebacker and the number two pivotman . . . was regular center in 1953 . . . definitely one of the best defensive



men and blockers in hero in the Blue line.

RALPH DAGNA TORRANCE . . . "Ralph" . . . weight—198, height—6-0, class—senior, course—education, hometown—Macon, Ga., born—July 1, 1932 . . . attended Lanier High School in Macon . . . won All-State and All-Southern honors . . . good on both offense and defense, he broke into the starting line-up in 1952 when Bob Burrows was injured in the Georgia Tech game . . . a key man last year . . . should end career with reputation of being one of the best in the business.



WILSON UZZLE

CADILLAC--OLDSMOBILE

Sales and Service



WHEN IN RALEIGH

WILSON UZZLE, Inc.

421 Fayetteville St.

Phone 2-4474



WHEN IN DURHAM

UZZLE MOTOR COMPANY

Corner Foster and Geer Streets

Phone 5191



Notes from

The Wolfpackage

By ED STOREY, Director of Sports Publicity
North Carolina State College

Tonight's game is the 30th meeting between the Blue Devils and the Wolfpack with Duke having a 21-7 edge and one tie in the series. Duke's record to date shows two wins, one loss and a tie. Duke opened with a 52-0 win over Pennsylvania and followed with a 7-6 edge over Tennessee. Then followed the 13-13 tie with Purdue and last week the Blue Devils bowed to Army, 28-14.

State's record is one win and four losses. The Wolfpack lost to Virginia Tech 30-21 in its opener, then bowed to Carolina, 20-6 and Wake Forest 26-0. The Wolfpack bounced back two weeks ago to whip William and Mary by 26-0 and last week lost to Florida State, 13-7 on a blocked punt in the fourth period.

In last week's Florida State program we printed the State statistics for the season and are continuing them here this week, because a lot of you fans indicated that they proved interesting. Under kickoff returns George Marinkov has averaged better than 30 yards on seven returns and is currently the Atlantic Coast Conference leader in this department. Here once again are the State statistics:

RUSHING

Player	Times Carry	Yds Gain	Yds Lost	Net Gain
John Zubaty	40	194	2	192
Geo. Marinkov	50	211	30	181
Don Langston	30	144	3	141
Monte Seehorn	36	102	4	98
Harrison Makeever	22	71	2	69
Bill Teer	14	34	6	28
Ted Kilyk	4	25	0	25
Jim Meadlock	9	17	6	11
Ed Gelsdorf	4	10	3	7
Dave Meloni	5	8	1	7
Billy Franklin	7	20	17	3
Joe Barringer	2	2	5	-3
Eddie West	21	42	50	-8
	295	883	129	753

PUNT RETURNS

Player	No. Return	Yds Gain	TD's
Monte Seehorn	1	8	0
Ted Kilyk	1	8	0
John Zubaty	1	4	0
	3	20	0

KICKOFF RETURNS

Player	No. Return	Yds Return	TD's
George Marinkov	7	261	1
Billy Franklin	3	47	0
H. Makeever	1	28	0
Jim Meadlock	1	40	0
Eddie West	1	3	0
John Zubaty	1	17	0
Bill Teer	1	15	0
Mike Nardone	1	0	0
	16	411	1

SCORING

Player	TD's att.	PAT ma.	PAT FG	TP	
Geo. Marinkov	2	0	0	0	12
John Zubaty	2	0	0	0	12
Don Langston	1	0	0	0	6
Harry Lodge	1	0	0	0	6
Monte Seehorn	1	0	0	0	6
Mike Nardone	1	0	0	0	6
Eddie West	1	0	0	0	6
John Bagonis	0	3	3	0	3
Al D'Angelo	0	5	2	0	2
John Lowe	0	1	1	0	1
	9	9	6	0	60

FORWARD PASSING

Player	No. Att	No. Comp	Had Inter	Yds Gain
Eddie West	21	7	4	95
Billy Franklin	16	7	2	37
John Zubaty	2	2	0	21
Bill Teer	3	1	1	17
Joe Barringer	4	1	0	13
Geo. Marinkov	1	1	0	8
Dave Meloni	1	0	0	0
	48	19	7	191

PASS RECEIVING

Player	No. Cgt.	Yds Gain	TD's
Geo. Marinkov	4	61	0
Harry Lodge	4	47	1
John Lowe	4	36	0
Bill Teer	1	20	0
Henry Brown	1	18	0
Billy Franklin	1	17	0
Eddie West	1	8	0
John Zubaty	1	-6	0
H. Makeever	1	-6	0
Don Langston	1	-4	0
	19	191	1

INTERCEPTION RETURNS

Player	No. Inter.	Yds Return	TD's
Geo. Marinkov	3	19	0
Mike Nardone	2	57	1
John Zubaty	1	23	0
Billy Franklin	1	20	0
	7	119	1

PUNTING

Player	Times Kick	Yds Kick	Had Blk.	Punt Avg.
Eddie West	5	194	0	38.8
John Lowe	6	196	1	32.6
Dave Meloni	2	85	0	42.5
Bill Teer	1	43	0	43.0
Mike Nardone	1	30	0	30.0
John Zubaty	13	398	2	30.6
Jim Meadlock	1	21	0	21.0

Remaining Games At Home
FURMAN AT RALEIGH (nite) next week
RICHMOND AT RALEIGH (homecoming)
November 13 day game

W. H. KING DRUG CO.

WHOLESALE DRUGGIST

Raleigh, N. C.

For Courteous, Dependable Service
Shop at your Neighborhood Drug Store



The House of Friendly and Dependable Service

SERVING TWO GREAT
NORTH CAROLINA CITIES

**HOTEL WASHINGTON
DUKE**

DURHAM, N. C.
William Stubbs, Mgr.

HOTEL SIR WALTER

RALEIGH, N. C.
Arthur Buddenhagen, Mgr.

"FAMOUS FOR PRIME RIBS OF BEEF"

TWO FINE MEYER HOTELS

SHOP

Hudson-Belk

Eastern Carolina's Largest Store

CONVENIENT CUSTOMER PARKING

CHARGE ACCOUNT PLANS

LAY-AWAY DEPARTMENT

THE WOLFPACK CONTINUES TO WEAR

"The Finest In The Field"

ATHLETIC EQUIPMENT

By

RAWLINGS

Sold Exclusively In This Territory By

JOHNSON-LAMBE CO.

116-118 S. Salisbury St., Raleigh, N. C.

Phone 8848



Red Johnson of Johnson-Lambe shows off brand new Rawlings pads to North Carolina State coaches, Al Michaels, left and Carey Brewbaker, right.

If you like Beer

You'll **Love** SCHLITZ

One of the finer things of life



**The BEER That
Made Milwaukee Famous**

Wake Wholesale Company

Raleigh, N. C.

At Raleigh Theaters

AMBASSADOR
Theatre

Starting Sunday

Oct. 24th

ROBERT TAYLOR
ELEANORE PARKER

in

**"Valley Of The
Kings"**

In Technicolor

VARSAITY

Sunday & Monday

"THE ROBE"

Tuesday & Wednesday

"Filmarte Attraction"

"The Golden Coach"
with Anna Magnani

Thursday & Friday

"Lucky Me"

Cinemascope—Doris Day

Watch For These Hits Coming Soon To The Ambassador

"A STAR IS BORN" Cinemascope
Judy Garland—James Mason

"DRUMBEAT" Cinemascope—Alan Ladd

"TRACK OF THE CAT" Cinemascope—Robert Mitchum

CAPITOL

Sunday & Monday
**"LURE OF THE
WILDERNESS"**

with

Jean Peters
Jeffrey Hunter
Walter Brennan

Tuesday & Wednesday

**"TARZAN AND THE
SHE DEVIL"**

**"TARZAN'S DESERT
MYSTERY"**

TOWER

DRIVE IN THEATRE

STARTING SUNDAY

OCT. 24TH

**"Magnificent
Obsession"**

In Technicolor

JANE WYMAN
ROCK HUDSON

Movies Are Your Best Entertainment

FOLLOW THE
Washington Redskins
AND NORTH CAROLINA'S OWN
Charlie Justice
OVER THESE

TOBACCO RADIO NETWORK STATIONS

WFNC Fayetteville	1390 KC	WJNC Jacksonville	1240 KC
WFNC FM Fayetteville	98.1 MG	WRAL Raleigh	1240 KC
WGBR Goldsboro	1150 KC	WRAL FM Raleigh	101.5 MG
WEQR Goldsboro	96.9 MG	WCEC Rocky Mount	810 KC
WGTC Greenville	1590 KC	WFMA Rocky Mount	100.7 MG

Washington Redskins 1954 Schedule

San Francisco	September 26	San Francisco 49'ers	5:00 P.M. EST
	Sunday afternoon		
Pittsburgh	October 2	Pittsburgh Steelers	8:00 P.M. EST
	Saturday night		
Washington	October 10	New York Giants	2:00 P.M. EST
Washington	October 17	Philadelphia Eagles	2:00 P.M. EST
New York	October 24	New York Giants	2:00 P.M. EST
Washington	October 31	Baltimore Colts	2:00 P.M. EST
Cleveland	November 7	Cleveland Browns	2:00 P.M. EST
Washington	November 14	Pittsburgh Steelers	2:00 P.M. EST
Chicago	November 21	Chicago Cardinals	2:00 P.M. EST
Philadelphia	November 28	Philadelphia Eagles	2:00 P.M. EST
Washington	December 5	Cleveland Browns	2:00 P.M. EST
Washington	December 12	Chicago Cardinals	2:00 P.M. EST

PRESENTED BY YOUR

LOCAL



DEALER

North Carolina Equipment Company



This All-American team—the INTERNATIONAL TD-24 crawler and bulldozer—gains extra yardage on every pass. We're headquarters for the complete line of INTERNATIONAL industrial equipment—

tractors, tractor equipment, high-speed earthmovers and power units—that will reduce your earth moving or logging costs sharply. Call for your demonstration whenever and wherever you choose.



Construction, Industrial, Logging and Material-Handling Equipment

What makes
a Lucky
taste better?

"IT'S TOASTED"
to taste better!

LUCKIES TASTE BETTER

CLEANER,
FRESHER,
SMOOTHER!

© 1951, THE AMERICAN TOBACCO COMPANY

