

N. C. STATE



September 15, 1951

CATAWBA



Riddick Stadium
Official Program 50c

30 35 40 45 50 45 40 35 30

Larry Tisdale

All-American Power Play

For speed and power and sheer dogged never-give-up guts, here's an All-American to tackle the toughest jobs anywhere. It's the big red International TD-24, the most powerful crawler tractor in the world.

Ask us for the low-down on industrial power. Let one of our six conveniently located plants be your supply base for International Tractors, Diesel Engines and Power Units, plus prompt and efficient service on genuine parts, repairs and rebuilding.

We are in business to help you with "Power That Pays."

INTERNATIONAL



**CRAWLER TRACTORS
WHEEL TRACTORS
DIESEL ENGINES
POWER UNITS**



Sales • Parts • Service

CONSTRUCTION, INDUSTRIAL AND LOGGING EQUIPMENT

NORTH CAROLINA EQUIPMENT COMPANY

RALEIGH • GREENVILLE • WILMINGTON • GUILFORD • CHARLOTTE • ASHEVILLE

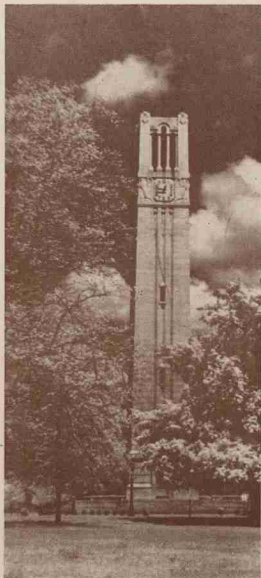


Table of Contents

| | |
|---|-------------------|
| Alphabetical List of Advertisers | 6 |
| Alumni News | 79 |
| Basketball Schedule 1951-1952 | 56 |
| Brief Facts on State 1951 Opponents | 77 |
| Captain James O'Rourke | 12 |
| Cartoon | 33-38-54 |
| Casey, Willis, Ass't. Athletic Director | 20 |
| Catawba College | 47-48-49-50-52-53 |
| Clogston, Roy, Athletic Director | 16 |
| Coaching Record at State, Feathers | 21 |
| Feathers, Beattie, Head Football Coach | 18-19 |
| Fitzgibbons, Tom, Head Trainer and Cross Country | 27 |
| Fletcher, Gwynn, Ass't. Football Coach | 26 |
| General Alumni Association—G. Sam Rowe, Pres. | 79 |
| Harrelson, Colonel John W., Chancellor | 9 |
| Hendrickson, Horace, Ass't. Football Coach | 22 |
| N. C. State College Football History | 53 |
| Numerical Listing of Catawba College | 44 |
| Numerical Listing of State College | 45 |
| Opponents 1951 Schedules | 14 |
| Other Sports at State College | 58-60-62-64 |
| Pate, Rudolph, Public Relations | 32 |
| Peacock, Dick, Ass't. Football Coach | 24 |
| Previous Scores of 1951 Opponents | 29 |
| Prospects at a Glance | 82 |
| Record at State, 1929-1943 | 40 |
| Riddick Stadium | 70 |
| Rotella, Al, Ass't. Football Coach | 23 |
| Starting Lineup, Catawba | 43 |
| Starting Lineup, N. C. State | 46 |
| State College Moves Ahead | 32 |
| Statistics of Catawba Football Squad | 43 |
| Statistics of N. C. State Football Squad | 46 |
| Storey, Ed, Athletic Publicity Director | 10 |
| Vann, Graves, Ass't. Controller | 9 |
| Wolfpack Gridiron | 5 |

Riddick Stadium—September 15, 1951

Price 50 Cents

Information on lost and found articles may be obtained at Athletic Department office. Phone 2-2407
The First Aid Room is located in the Field House, Ground floor, west side of building
All the N. C. State Football games of the 1951 season will be broadcast. N. C. State vs. Maryland—
Televised

STATION WRAL 1951 SQUAD ROSTER

NICKNAME: Hooper-Happy

COLORS: Red, White, Blue

NEWS & COMMENTARY

| NAME | DAYS | TIME |
|------------------|------|------------|
| Alsbaugh, Bill | M-S | 6:00 P.M. |
| Baukhage, H. R. | M-F | 11:00 P.M. |
| Cunningham, Bill | S | 10:45 P.M. |
| Foster, Cedric | M-F | 1:00 P.M. |
| Haatter, Gabriel | M-F | 7:30 P.M. |
| Helms, Jesse | M-F | 6:15 P.M. |
| Henry, Bill | M-F | 8:55 P.M. |
| Higbe, Les | M-F | 9:55 A.M. |
| Lewis, Fulton | M-F | 7:00 P.M. |
| Thompson, Bob | S | 8:30 P.M. |
| Tucker, Tom | M-S | 7:45 P.M. |
| Wingfield, Alvin | S | 8:45 P.M. |

SPORTS

| NAME | DAYS | TIME |
|-----------|------|-----------|
| Ray Reeve | M-S | 6:45 P.M. |
| Football | Sat | 2:00 P.M. |
| Sam Hayes | Fri | 7:15 P.M. |

CHILDREN

| | | |
|--------------------|-----|-----------|
| Beatty, Clyde | MWF | 5:30 P.M. |
| Banson, Bobby | MWF | 5:00 P.M. |
| Challenge of Yukon | TT | 5:00 P.M. |
| Hortley, Haskknife | S | 9:00 P.M. |
| Hickok, Wild Bill | S | 7:00 P.M. |
| Sky King | TT | 5:30 P.M. |

MUSIC & VARIETY

| | | |
|------------------|-----|------------|
| Fletcher, Fred | M-S | 7:05 A.M. |
| Lewis, J. D. | M-S | 6:00 A.M. |
| Lombardo, Guy | Sat | 9:30 P.M. |
| Massey, Curt | M-F | 12 Noon |
| Paole, Bob | M-F | 3:00 P.M. |
| Show, Earl | M-F | 10:00 P.M. |
| Silver, Mike | Sat | 11:00 P.M. |
| Theatre, Chicago | Sat | 10:00 P.M. |

MYSTERY & DRAMA

| | | |
|-----------------------|---|------------|
| Crime Doesn't Pay | W | 8:00 P.M. |
| Hidden Truth | S | 10:00 P.M. |
| International Airport | W | 8:30 P.M. |
| John Steele | T | 9:00 P.M. |
| Murder By Experts | M | 9:00 P.M. |
| Mysterious Traveller | T | 9:30 P.M. |
| The Shadow | S | 5:00 P.M. |
| True Detective | S | 5:30 P.M. |

A WORD FROM THE TEAM

The squad roster you see above was, as you might have guessed, drawn up in the midst of the Summer heat, long before today. It is by no means a complete roster of the programs and voices on WRAL.

We have a lot of fun at our station. We don't make a lot of claims; we don't worry about the other stations; we just do our best to provide the best all-round radio broadcasting possible.

Nope, we don't make claims. We let the record stand for itself. And here's part of what the record shows.

WRAL is Raleigh's most popular station for news.

WRAL is Raleigh's most popular station for sports.

WRAL has the best assortment of children's programs and mysteries broadcast in Raleigh.

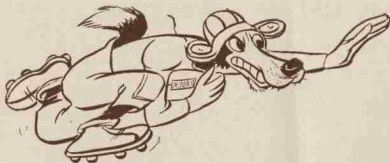
As a result, WRAL is listed as the most listened-to Mutual Broadcasting System affiliate in the United States from a competitive standpoint.

That covers a lot of ground—and requires a lot of listeners. That's why WRAL's local advertising volume last year was more than three times the combined volume of other Raleigh stations.

Thanks for spending the time to read about us on this page. And when you're in Raleigh, drop by to see us.

AM **WRAL** FM

"In Raleigh, For Raleigh"



THE WOLFPACK GRIDIRON

Official N. C. State College Football Program

N. C. STATE vs. CATAWBA

Published for each N. C. State College home football game by the Program Bureau of North Carolina State College.
National Advertising Representative: Don Spencer Company, Inc., 271 Madison Avenue, New York, N. Y.

Volume XXI

Riddick Stadium, Raleigh, N. C., September 15, 1951

No. 1

The State College Athletic Council

Faculty Representatives

Dr. H. A. Fisher, Chairman
Dr. I. O. Schaub
M. E. Campbell, Dean
Dr. J. B. Kirkland
Dr. C. H. Bostian

Alumni Representatives

W. H. Sullivan
D. W. Seifert
W. W. Womble
R. D. Lassiter
J. E. Peden

Student Representatives

Walter Schacht
Buck Pruden

FOOTBALL STAFF

Beattie Feathers—Head Coach
Horace Hendrickson—Backfield Coach
Al Rotella—Line Coach
Dick Peacock—Ass't. Line Coach
Gwynn Fletcher—Ass't. Backfield Coach
Tom Fitzgibbons—Head Trainer
Harold Keating—Ass't. Trainer
John Abbott—Equipment Manager
Saxe Barnes—Ass't. Equipment Mgr.

ATHLETIC ADMINISTRATION STAFF

Rog Clogston—Athletic Director
Willis Casey—Ass't. Athletic Director
Ann Perkins—Secretary
Graham Campbell—Ticket Manager
Ed Storey—Athletic Publicity Director
Bill Brannin—Program Director

N. C. STATE COLLEGE 1951 FOOTBALL SCHEDULE

| Date | Home Team | Score | Opponent | Score | At | Time |
|----------|-------------|-------|----------------------|-------|-------------------|-----------|
| Sept. 15 | N. C. State | — | Catawba College | — | Raleigh | 2:45 P.M. |
| Sept. 22 | N. C. State | — | U. of North Carolina | — | Chapel Hill | 2:30 P.M. |
| Sept. 29 | N. C. State | — | Wake Forest College | — | Raleigh | 8:00 P.M. |
| Oct. 6 | N. C. State | — | Clemson College | — | Raleigh | 8:00 P.M. |
| Oct. 13 | N. C. State | — | Duke University | — | Durham | 2:30 P.M. |
| Oct. 20 | N. C. State | — | William and Mary | — | Raleigh | 2:00 P.M. |
| Oct. 27 | N. C. State | — | Virginia Tech | — | Blacksburg, Va. | 2:00 P.M. |
| Nov. 2 | N. C. State | — | U. of Louisville | — | Louisville, Ky. | 8:00 P.M. |
| Nov. 10 | N. C. State | — | Davidson College | — | Charlotte | 2:00 P.M. |
| Nov. 17 | N. C. State | — | U. of Maryland | — | College Park, Md. | 2:00 P.M. |

ALPHABETICAL LIST OF ADVERTISERS

| | | | | | |
|------------------------------------|-------|--------------------------------|----|--|----|
| A Little Moore | 67 | Herring Sash & Door Co. Inc. | 65 | Mobley's Art Center | 53 |
| Alfred Williams Co. | 49 | Hill's Inc. | 73 | Moore & Johnson Co. | 58 |
| American Oil Co. | 7 | Hillsboro Cut Rate | 28 | Gene Moring Florist | 81 |
| American Tobacco Co. | 15 | Holloway's Esso Service | 36 | National Film Service | 49 |
| John B. Askew | 11 | Honeycutt Fruit & Produce Co. | 67 | Nash-Steele Motor Co. | 40 |
| Associated Insurers, Inc. | 23 | Henry Honeycutt's Esso | 64 | Nicholson | 73 |
| Atkins Motors, Inc. | 37 | Hotel Raleigh | 36 | North Carolina Equipment Co. | 2 |
| Auto Finance Co. | 73 | Hudson-Belk | 26 | North Carolina Products Corp. | 17 |
| Auto Trading Post | 39 | Huneycutt, Inc. | 31 | Occidental Life Insurance Co. | 62 |
| Barnette's Esso Service | 68 | J. B. Hunt & Sons, Inc. | 17 | Oldham & Worth, Inc. | 28 |
| Bell Bakeries, Inc. | 74 | Ideal Cleaners | 17 | Peden Steel Co. | 31 |
| Bohemia Restaurant | 27 | Ivey Taylor Co. | 37 | Pine State Creamery | 82 |
| Bosse Jewelers' | 32 | Jean's, Inc. | 51 | Players Retreat | 79 |
| Brawley Jewelry Co. | 10 | Johnson-Lambe Co. | 20 | Powell & Griffiths | 68 |
| Brogden Produce Co., Inc. | 74 | Jones Sausage | 55 | Proescher's | 80 |
| Brogden Produce Co. | 57 | Jones Sinclair Service Station | 13 | Radio Station WRAL | 4 |
| Bryana Fine Fabrics | 32 | K & W Motors, Inc. | 57 | Raleigh Sea Food | 66 |
| Burlington Mills | 71 | | | Reynolds, R. J. Tobacco Co. | 88 |
| T. L. Butler | 37 | | | Rhodes, Inc. | 72 |
| Leon Byrum | 81 | | | Sanders Esso Service | 79 |
| Caldwell Sales & Service | 73 | | | Sanders Motor Co. | 63 |
| Camel Cigarettes | 88 | | | Sig Schafer & Son | 78 |
| Cameron Village | 38 | | | Sears Insurance Agency | 60 |
| Canton Cafe | 58 | | | Sears, Roebuck & Co. | 25 |
| Capital City Lumber Co. | 26 | | | Seven-Up Bottling Co. | 52 |
| Carolina Blue Printers | 81 | | | Simmons, J. W. | 57 |
| Carolina Builders Co. | 59 | | | Smith-Melville Dairy Products, Inc. | 8 |
| Carolina Cleaners | 85 | | | Southern Builders & Suppliers, Inc. | 8 |
| Carolina Coach Co. | 65 | | | Southern Dairies, Inc. | 84 |
| Carolina College of Beauty Culture | 73 | | | State Capital Life Insurance Co. | 41 |
| Carolina Power & Light Co. | 34 | | | State House Restaurant | 81 |
| Chesterfield Cigarettes | 44-45 | | | Stockton, White & Co. | 67 |
| Clark Art Shop, Inc. | 8 | | | Stone's | 30 |
| F. D. Cline Construction Co. | 13 | | | Sylvania Electric Products, Inc. | 11 |
| College Soda Shop | 27 | | | T. W. Swift Co. | 75 |
| Colonial Pines Hotel | 68 | | | Taylor Food Co. | 13 |
| Connell Realty & Mortgage Co. | 57 | | | James E. Thiem | 73 |
| Conn-Gower Pontiac Co. | 70 | | | Tire Distributors, Inc. | 65 |
| W. E. Cooper Furniture Co. | 80 | | | Tire Sales & Service Co. | 60 |
| Dari Delight | 29 | | | Theatre's | 83 |
| Davidson & Jones | 58 | | | Uzzle's Soda & Sandwich Shop | 33 |
| Dillon Supply Co. | 67 | | | Robert Vernon, Inc. | 67 |
| The Fred Dixon Agency | 73 | | | Village Pharmacy | 8 |
| The Drive-In Grill | 61 | | | Village Restaurant | 48 |
| Dunn's Ice Cream | 30 | | | Wake Cafe | 29 |
| Earl's Grill | 26 | | | Wake Wholesale | 57 |
| Eatman's Gulf Service | 81 | | | Waller & Smith | 21 |
| Fallon's | 62 | | | Warren's Restaurant | 21 |
| Ferguson's Hardware | 28 | | | Webster Distributors | 57 |
| Finch's Drive-In | 69 | | | Wilmont Cleaners | 13 |
| First-Citizens Bank & Trust Co. | 22 | | | Wilson Uzzle, Inc. | 86 |
| Friendly Cleaners | 27 | | | Winter's Richfield Service Station Station | 17 |
| General Electric | 42 | | | Woodson Insurance & Realty Co., Inc. | 17 |
| B. F. Goodrich | 13 | | | Job P. Wyatt & Sons Co. | 76 |
| Grimes Cafe | 67 | | | Yates Auto Service, Inc. | 79 |
| H. H. Tire Retreading Co. | 38 | | | | |
| Harris Wholesale | 57 | | | | |
| Hayes-Barton Pharmacy | 19 | | | | |

* * *

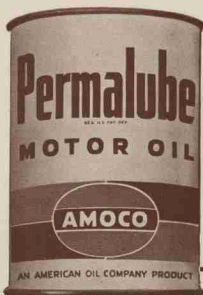
**SUPPORT
OUR
ADVERTISERS**

* * *

| | |
|-------------------------------|-------|
| Ken-Ben 5c-10c-15c Store | 33 |
| W. H. King Drug Co. | 77 |
| Land's, Inc. | 24 |
| Lane Trucking Co. | 21 |
| Lanier-Womble | 13 |
| Liggett & Myers Tobacco Co. | 44-45 |
| Longines-Wittnauer Watch Co. | 19 |
| Lucky Strike | 15 |
| Lundy Real Estate Co. | 81 |
| Lynn's Service Garage | 87 |
| McLeod & Watson Co. | 24 |
| C. C. Mangum | 81 |
| Manhattan Restaurant | 64 |
| Manmur Barber Shop | 33 |
| Melville Dairy Products, Inc. | 8 |
| Mill's Cut Rate | 23 |
| Milton's Clothing Cupboard | 33 |

Winning team for your car!

Famous for extra distance
—measured in miles!



—blocks out dirt and wear
because it cleans as it lubricates!



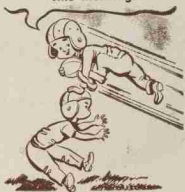
**AMERICAN
OIL
COMPANY**

from Maine to Florida

N. C. STATE Vs. CATAWBA

| Won—2 | Lost—0 | Tied—0 |
|---------|-----------|--------|
| 12..... | 1944..... | 7 |
| 7..... | 1950..... | 6 |
| — | | — |
| 19 | | 13 |

I had my
MELVILLE MILK
this morning!



**Smith-Melville Dairies,
Inc.**

Raleigh

Through Our Doors Pass The Worlds

Most Wonderful People:

Wolfpack Supporters

*Village
Pharmacy*

In Convenient Cameron Village



DIAL 4-1347—FREE DELIVERY

CLARK ART SHOP, INC.

INTERIOR DECORATORS

MANUFACTURERS—AWNINGS, VENETIAN BLINDS
FLOOR COVERINGS, PICTURE FRAMING
TARPAULINS, WINDOW SHADES

Raleigh, N. C.

Dial 8319

Serving Eastern North Carolina Over 28 Years

Southern Builders & Suppliers

Incorporated

**BETTER BUILDING MATERIALS
FOR BETTER BUILDERS**

622 North Dawson Street

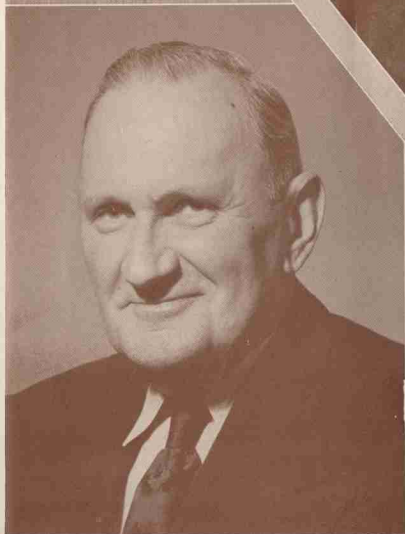
P. O. Box 2567

Raleigh, North Carolina

Phone 3-7569

J. W. HARRELSON

Chancellor, Chief Administrative Office
N. C. State College



GRAVES VANN

Business Manager of N. C. State College



Notes from The Wolfpackage

By ED STOREY, Director of Athletic Publicity

The 1951 football season officially opens here today with State's Wolfpack facing Catawba's Indians. For the next three months you'll be following the exploits of these two teams as well as your other favorites in the Southern and North State Conferences. Here's wishing you a lot of thrills during the Saturdays to come.

Coach Beattie Feathers' State squad, which numbers some 50-odd candidates, represents one of the best groups ever to wear the Red and White. This is not intended to mean that the Wolfpack of '51 will be any world-beaters, for such is not the case. However, the outlook is on the bright side. The spirit is excellent and the material above average. With a few breaks State can have a fine record this year.

Catawba, coached by one of the ablest men in the North State, Bob Spangler, a former Duke University blocking standout, is certain to be in high spirits for today's battle. Last year the Indians were barely beaten by the Wolfpack, 7-6. What might have been the winning touchdown for the Salisbury school was called back by a rule infraction.

Although today's game will officially open each school's schedule, both State and Catawba have had warm contests. State, training at Camp Lejeune Marine Base, turned in a 26-13 triumph over the Marines after just eight days of pre-season drills. Catawba worked last Saturday against Davidson and the grapevine reports that the Indians outscored Davidson two touchdowns to one.

Today will mark the beginning of Coach Beattie Feathers' eighth year at the head of the Wolfpack football squad. During the

preceding seven years his State elevens have always been stubborn opposition for all members of the Southern Conference. His ability as a coach is highly respected and his knack for getting his club ready for crucial contests with neighboring institutions has endeared him to friends and foes alike. Feathers' teams play to win not only for the school, but for the coach that they admire greatly.

State will bank strongly today on several key veterans who are established stars in their own right. Tackle Elmer Costa, No. 73, a 220-pounder from Paterson, N. J. is a leading candidate for All-America honors this season. Last year Elmer made several All-America selections as well as All-Southern. Other top men include Guards Vince Bagonis and Walter Schacht, Center Tom Tofaute, Tackles Jim Hillman, Fred Beaver, J. C. Britt and James Swart and Tailbacks Alex Webster and Ted Potts, Fullbacks Jim O'Rourke and Harvey Yeates, Blocking Backs Ray Barkouskie and Vitus Kaiser and others too numerous to mention here.

After today's contest the Wolfpack still has three remaining home contests we know you'll want to see. Two weeks from tonight the State squad will tangle with Wake Forest's Demon Deacons under the lights at 8 p.m. The following Saturday night the Wolfpack meets Clemson, also an 8 p.m. kickoff. On October 20 State's homecoming date will be against William and Mary with a 2 p.m. kickoff. Tickets are still available for all contests remaining in Riddick Stadium, but advance sales have been good and we'd advise you to get your ticket as soon as possible. Reserved seats are priced at \$3.00.

BRAWLEY JEWELRY CO.

"AUTHORIZED KEEPSAKE DEALER"

235 FAYETTEVILLE STREET

Sensational New Television Feature

SYLVANIA HALOLIGHT*

The Frame of Light for Viewing Comfort



The Madison . . . Sylvania 20" Mahogany Deluxe Console, with HALOLIGHT. Movie-Clear* picture. Studio-Clear* sound. Non-glare, wide-angle viewing with slanted, dust-sealed face. Also available in modern blond.

*Now Greater
Viewing
Comfort*

THIS sensational Sylvania engineering triumph gives a soft, cool frame of light around your screen. It breaks the sharp contrast between the TV screen and the darker surroundings. It makes viewing pleasanter, hours on end! It makes the picture seem clearer, actually look larger.



Till now, TV screens have been surrounded with a dark border.



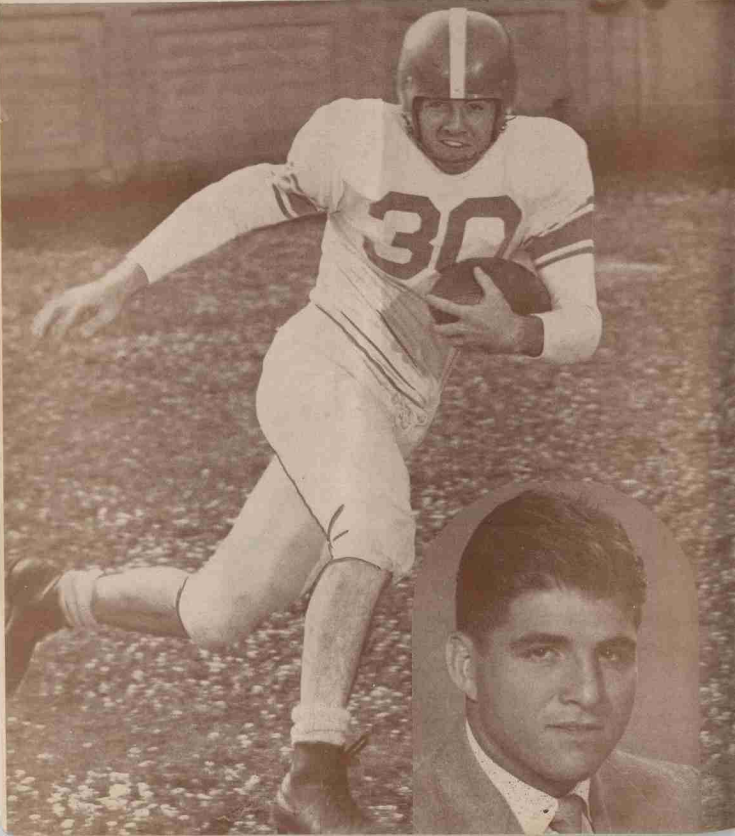
Now HALOLIGHT brings you a soft border of light to relieve the sharp contrast.

*Sylvania Trademark

JOHN B. ASKEW
Fairview at Oberlin Road
Raleigh

Captain James O'Rourke

N. C. State



Peanut Butter
Sandwiches

Potato Chips

TAYLOR FOOD COMPANY

*MAKERS OF FAMOUS
TAYLORED TO TASTE
FOOD PRODUCTS*

Sweet Fill
Sandwiches

Peanut Butter
Jams and Jellies

B. F. GOODRICH

Tires - Batteries

KELVINATOR REFRIGERATORS
MOTOROLA TELEVISION

322 S. Salisbury St.

Phone 3-3831

JONES SINCLAIR SERVICE

◇ ◇
Complete Service Needs

◇ ◇
Corner Hillsboro and Dawson Phone 9188 or 3-3044

Lanier  **Womble**

The Capital's Store For Men

DOWN TOWN TICKET SALES
FOOTBALL TICKETS

Now on sale here for All State College Home
Football Games

F. D. Cline Construction Co.

~~~~~  
MUNICIPAL PAVING & IMPROVEMENTS  
~~~~~

WILMONT CLEANERS

3015 Hillsboro

— Dependable Cleaning —

— SAVE WITH CASH & CARRY —

PHONE 2-2071

Raleigh, N. C.

Complete '51 Schedules of State's 1951 Opponents

CATAWBA

Sept. 15 N. C. State
 Sept. 22 Newberry
 Sept. 29 Erskine
 Oct. 6 W. Carolina
 Oct. 13 Appalachian
 Oct. 20 Elon
 Oct. 27 V.M.I.
 Nov. 2 Presbyterian
 Nov. 10 Guilford
 Nov. 22 Lenoir-Rhyne

NORTH CAROLINA UNIVERSITY

Sept. 22 N. C. State
 Sept. 29 Georgia
 Oct. 6 Texas
 Oct. 13 South Carolina
 Oct. 20 Maryland
 Oct. 27 Wake Forest
 Nov. 3 Tennessee
 Nov. 10 Virginia
 Nov. 17 Notre Dame
 Nov. 24 Duke

WAKE FOREST COLLEGE

Sept. 21 Boston College
 Sept. 29 N. C. State
 Oct. 6 Richmond
 Oct. 13 William and Mary
 Oct. 19 George Washington
 Oct. 27 North Carolina
 Nov. 3 Clemson
 Nov. 10 Duke
 Nov. 17 Baylor
 Nov. 24 South Carolina

CLEMSON COLLEGE

Sept. 22 Presbyterian
 Sept. 29 Rice
 Oct. 6 N. C. State
 Oct. 13 College of Pacific
 Oct. 25 South Carolina
 Nov. 3 Wake Forest
 Nov. 10 Boston College
 Nov. 17 Furman
 Nov. 24 Auburn

DUKE UNIVERSITY

Sept. 22 South Carolina
 Sept. 29 Pittsburgh
 Oct. 6 Tennessee
 Oct. 13 N. C. State
 Oct. 20 Virginia Tech
 Oct. 27 Virginia
 Nov. 3 Georgia Tech
 Nov. 10 Wake Forest
 Nov. 17 William and Mary
 Nov. 24 North Carolina

WILLIAM AND MARY

Sept. 22 Boston University
 Sept. 29 Oklahoma
 Oct. 6 V.M.I.
 Oct. 13 Wake Forest
 Oct. 20 N. C. State
 Oct. 27 Richmond
 Nov. 3 Pennsylvania
 Nov. 10 Virginia Tech
 Nov. 17 Duke
 Nov. 24 Virginia

VIRGINIA POLYTECHNIC INSTITUTE

Sept. 29 Davidson
 Oct. 6 Virginia
 Oct. 12 George Washington
 Oct. 20 Duke
 Oct. 27 N. C. State
 Nov. 3 Washington & Lee
 Nov. 10 William & Mary
 Nov. 17 Richmond
 Nov. 22 V.M.I.

LOUISVILLE UNIVERSITY

Oct. 5 Boston University
 Oct. 13 Cincinnati
 Oct. 19 Xavier
 Nov. 3 N. C. State
 Nov. 10 Houston University
 Nov. 17 Washington & Lee
 Nov. 24 Mississippi Southern

DAVIDSON COLLEGE

Sept. 22 Lenoir Rhyne
 Sept. 29 Virginia Tech
 Oct. 6 Citadel
 Oct. 13 Presbyterian
 Oct. 20 Richmond
 Oct. 27 Washington & Lee
 Nov. 3 V.M.I.
 Nov. 10 N. C. State
 Nov. 24 Georgia Tech

MARYLAND UNIVERSITY

Sept. 29 Washington & Lee
 Oct. 6 George Washington
 Oct. 13 Georgia
 Oct. 20 North Carolina
 Oct. 27 Louisiana State
 Nov. 3 Missouri
 Nov. 10 Navy
 Nov. 17 N. C. State
 Nov. 24 West Virginia

"The official watch for timing this game is Longines—the World's most honored watch."

**Be Happy -
Go Lucky!**

EILEEN WILSON, Lucky Star of TV and Radio, says:

At football games I love to cheer
"Go team!" and "Hip Hooray!"
But for a better taste I shout,
"Go Lucky Strike today!"
(Luckies taste better than any other cigarette!)



**LUCKIES TASTE BETTER
THAN ANY OTHER CIGARETTE !**

**L.S./M.F.T.-
Lucky Strike Means Fine Tobacco**

Meet North Carolina State's Director of Athletics,



ROY B. CLOGSTON

mental in helping round out the schedule of inter-collegiate contests for State teams and through his efforts a full-time tennis and soccer coach was added to the Wolfpack staff. Not only is Clogston vitally interested in the major sports on the campus, but he is a close follower of the so-called minor sports of swimming, track, tennis, golf, soccer and wrestling.

A graduate of Springfield College at Springfield, Mass., Clogston is a native of Ballston Lake, N. Y. He holds a degree in physical education from Springfield and a Master's degree in physical education from New York University.

Clogston's background in college athletics is extensive. For nearly 20 years he was director of athletics at St. Lawrence University at Canton, N. Y. and during his tenure there established St. Lawrence as one of the leading small colleges in national athletic circles. At St. Lawrence he served as head football coach as well as golf and wrestling mentor.

During World War II Clogston saw extensive service with the Navy. He served as administrative officer under Commander Tom Hamilton in the far-famed Hamilton-program which brought recreation facilities to the far corners of the world. He also served as rehabilitation officer on Guam and several other bases in the South Pacific. Clogston left the service with the rank of commander and is still active in the U. S. Naval Reserve.

"Roy" as Clogston is known by all his friends lends a personal interest in all of the school's athletic teams. He participates in tennis, swimming and golf in his spare moments and shoots in the low 80's on the golf course. Clogston is a keen judge of athletic talent and has recommended several top stars to State coaches.

Clogston is also active in the civic life of the community. He is a member of the Lions and Elks Clubs, serves as a member of the Southern Conference Basketball Committee and is on the National Collegiate Athletic Association's committee for Physical Education, Health and Recreation. During the past summer Clogston took a course in Animal Husbandry in the School of Agriculture.

During the past year Clogston joined the ranks of the benedicts as he married the former Ruby Garrison. The Clogstons make their home in Raleigh on Glenwood Avenue Extension.

After three years at the helm of N. C. State's athletic program, Roy Bennett Clogston has shown that he knows his way around. His popularity has grown by leaps and bounds and everywhere he has made additional friends for the school's athletic teams.

Taking over the reins at State on August 1, 1948 Clogston found many problems confronting the program, but with a systematic effort he set about the task of building Wolfpack teams and facilities to the point where today they are considered among the best in the Southern Conference.

Under Clogston's administration the huge William Neal Reynolds Coliseum was completed and readied for the 1949-50 basketball season. It was largely through his personal efforts that the first contest was staged in the structure on December 1, 1949.

Clogston has untiringly devoted his time to the progress of athletics at State. He has been instru-

IDEAL CLEANERS

3108 Hillsboro St.

Phone 3-3286

★ ★

L. M. "Smokie" Dodd

Everett Dixon

Winters Richfield Service Station

WASHING :: WAXING :: GREASING
TIRES :: BATTERIES
ACCESSORIES

Prompt Road Service

3009 Hillsboro

Phone 4-9126

WOODSON

Insurance and Realty Company,

Incorporated



Cameron Village

Tel. 6536

Raleigh, N. C.

Compliments of

J. B. HUNT & SONS, INC.

CONSTRUCTION EQUIPMENT

Highway and Building Supplies



323 W. MARTIN

Phone 2-3919

RALEIGH, N. C.

BLOCK :: BRICK



PIPE

Plain and Reinforced

6 inch-60 inch



N. C. Products Corp.

RALEIGH

KINSTON

BEATTIE FEATHERS, Head Coach



Beattie Feathers will inaugurate his eighth season as head football coach at North Carolina State with the opening of the 1951 season, establishing a new record in longevity for a Wolfpack mentor. During his tenure on the West Raleigh campus, Feathers' popularity has increased with each season. His present contract runs through the 1953 season.

Very few college coaches in the nation can boast the Feathers' background as an outstanding player in both collegiate and professional circles. Although many mentors have served longer as coaches, probably no more than a handful can claim 15 years of actual participation in the game, which Feathers achieved with four years of high school play, four years in collegiate circles and seven seasons in the professional ranks.

During his career as a player Feathers' achieved the top selection in each of his three divisions. As a prep schooler he was all-state Virginia as a backfield star at Bristol (Va.) High, at the University of Tennessee he was a unanimous All-America pick during the 1933 season, and with the Chicago Bears in 1934 he was named to the first All-Professional team, tantamount to the professional All-America.

Feathers gained wide acclaim as a college star, but carried even more recognition as a professional ball-gainer. During the 1934 season he set a pro

football record by gaining 1,026 yards for an average of nearly 10 yards per carry from scrimmage. That record stood until Steve Van Buren of the Philadelphia Eagles cracked it in 1949. Besides a five-year stretch with the Chicago Bears, Feathers also performed in the play-for-pay ranks with the Brooklyn Dodgers and the Green Bay Packers.

In 1940 Feathers gave up the playing side of the gridiron to join the coaching ranks as assistant at Appalachian State Teachers College in Boone, N. C. After two years as an assistant Feathers was named head coach in 1942 and his Mountaineer team won seven of 10 games. In 1943 Feathers moved to Raleigh where he was hired as an assistant to Williams (Doc) Newton. The following year in 1944 when Newton resigned to take a coaching position at the University of South Carolina, Feathers was selected as head coach of the Wolfpack by the State Athletic Council.

Although he had to put together a representative squad from a crew of World War II draft rejects and youngsters who had little experience, that first Feathers-coached team rolled up a remarkable record of seven wins in nine contests. The next year with even the 4F's missing the Wolfpack won only two of the nine games.

But in 1946 with a brand new team composed of war veterans the Wolfpack bounced back into the major college football picture and State soared to a ranking among the top 10 clubs in the country as the Feathersmen copped eight out of 10 contests and whipped such outstanding teams as Duke, Wake Forest, Virginia, Florida and Maryland. The great success was followed by a bid to the Gator Bowl at Jacksonville, Florida where State dropped a 34-13 decision to the Oklahoma Sooners.

During his seven-year rein over the Wolfpack destinies Feathers has become widely known for his ability to pull at least one major upset during a season. Even during the lean years of 1948 and 1949 when State elevens could win only a combined total of six contests, the Wolfpack succeeded in holding a highly-favored Duke team to a scoreless tie and licking Wake Forest by a remarkable 27-14 count in the '49 season when most of the experts had favored the deacons by at least 18 points.

Last year with one of the smallest squads in State gridiron history (34 men) the Wolfpack continued its reputation as "giant-killers." After losing to top-ranked North Carolina, Clemson and Duke, State bounced back for four consecutive triumphs, including an amazing 16-13 upset over the University of Maryland which knocked the Terrapins from a fifth ranked position in the nation. Another highlight of the year was the 6-6 deadlock with Wake Forest's Demon Deacons, a team favored by 14 points in the pre-game betting. State moved 80 yards with just two minutes to play in the contest to gain the deadlock.

Feathers has proven to be one of the most popular mentors in the history of the college. Only one other State coach, Doc Newton, has served as long as seven seasons as head football coach of the Wolfpack, and Feathers, beginning his eighth year this season, will set a new record for length of service.

Although Feathers' record with the Wolfpack of 33 wins against 31 losses and four ties is not among the best in the nation, this record has been compiled against the best opposition in the Southern Conference, one of the toughest leagues in the country. Each year the Wolfpack has met a minimum of seven conference opponents and no one can accuse Feathers of taking on a "taylor-made" schedule.

During his seven years at State the Wolfpack boss has never been defeated by all three other members of the Big Four—Duke, North Carolina and Wake Forest, three of the nation's leading football powers. Each year he has managed, despite adversity, to whip or tie at least one of these three old-time foes. No other coach in the compact Big Four can boast such a mark over seven seasons.

An amiable, easy-going sort of fellow, Feathers has a host of admirers all over the Southern Conference area. His football teams are always respected and his ability to win friends has endeared him to college alumni and friends alike.

The Wolfpack coach is the father of three lovely girls and he and Mrs. Feathers make their home in Cary, N. C.

We're Pulling for



★ ★

HAYES-BARTON PHARMACY

Phil and Hobson Gattis

★ ★

Hayes Barton

Tel. 2-4641

OFFICIAL WATCH FOR THIS GAME



Longines



The World's Most Honored Watch

ACCEPTED AS OFFICIAL WATCH
FOR TIMING
CHAMPIONSHIP SPORTS EVENTS
IN ALL FIELDS ALL OVER THE WORLD

*Product of
Longines Wittnauer Watch Company*



THE WOLFPACK CONTINUES TO WEAR

"The Finest In The Field"

ATHLETIC EQUIPMENT

By

RAWLINGS

Sold Exclusively In This Territory By

JOHNSON-LAMBE CO.

116-118 S. Salisbury St., Raleigh, N. C.

Phone 8848

WILLIS R. CASEY, Assistant Athletic Director and Swimming Coach



Jack-of-all trades on the State athletic staff is Willis Casey, who has one of the most impressive records as a swimming coach of any tank mentor in the Southern Conference. His teams year after year have always been in contention for the loop title and

during his four seasons as top man of the Wolfpack mermen he has never finished lower than second place in the conference. Last year his State club had a 10-2 mark.

Besides handling the State swimming team, Casey doubles in brass as assistant athletic director, assistant track and cross country coach, director of the Southern Conference Cross-Country Championships, tournament manager of the Dixie Basketball Classic, and a dozen other jobs too numerous to mention. If there's truly a jack-of-all trades in the coaching profession it's Mr. Casey.

Willis is a graduate of the University of North Carolina where he majored in Physical Education. He was also a championship swimmer in his undergraduate days. Casey is married to the former Ethel Laughlin, who was one of Eastern North Carolina's finest feminine swimmers. She is a graduate of Meredith College. They have one son, Bobby, four years old.

This year Casey's State swimming team will have to rely strongly on inexperienced sophomores and a few lettermen holdovers. Willis sums up the prospects for the season thusly, "We will not be as strong as in past seasons, but with a few breaks we may be capable of winning half of our meets. We'll miss Bill Ward in the free-style and will not have

(Continued on next page)

Beattie Feathers Seven-year Coaching Record at N. C. State College

| 1944 | | | 1946 | | | 1947 | | | 1949 | | |
|-----------------------|--------------|----|-----------------------|--------------|----|-----------------------|----------------|----|-----------------------|----------------|-----|
| Won 7, Lost 2, Tied 0 | | | Won 8, Lost 2, Tied 0 | | | Won 5, Lost 3, Tied 1 | | | Won 3, Lost 7, Tied 0 | | |
| 27 | Milligan | 7 | 13 | Duke U. | 6 | 0 | Duke U. | 7 | 6 | North Carolina | 26 |
| 13 | Virginia | 0 | 14 | Clemson | 7 | 14 | Davidson | 0 | 6 | Clemson | 7 |
| 7 | Clemson | 13 | 25 | Davidson | 0 | 18 | Clemson | 0 | 14 | Davidson | 20 |
| 12 | Catawba | 7 | 14 | Wake Forest | 6 | 6 | Florida | 7 | 13 | Duke | 14 |
| 7 | Wake Forest | 21 | 6 | Va. Tech | 14 | 21 | Chattanooga | 0 | 6 | Maryland | 14 |
| 19 | Wm. & Mary | 2 | 49 | Vs. Military | 7 | 6 | North Carolina | 41 | 14 | Virginia Tech | 13 |
| 21 | Vs. Military | 6 | 0 | Vanderbilt | 7 | 26 | Wake Forest | 0 | 27 | Wake Forest | 14 |
| 28 | Miami U. | 7 | 37 | Virginia | 7 | 7 | Virginia | 2 | 21 | Villanova | 45 |
| 39 | Richmond | 0 | 37 | Florida | 6 | 0 | Maryland | 0 | 7 | Wm. & Mary | 53 |
| | | | 28 | Maryland | 7 | | | | | | |
| 173 | Totals | 63 | 213 | Totals | 67 | 92 | Totals | 57 | 134 | Totals | 192 |

| 1945 | | | Post-Season 'Gator Bowl | | | 1948 | | | 1950 | | |
|-----------------------|--------------|-----|-------------------------|-------------|----|-----------------------|-------------|-----|-----------------------|---------------|-----|
| Won 2, Lost 7, Tied 0 | | | 13 Oklahoma U. | | | Won 3, Lost 6, Tied 1 | | | Won 5, Lost 4, Tied 1 | | |
| 47 | Milligan | 12 | 13 | Oklahoma U. | 34 | 0 | Duke Univ. | 0 | 7 | Catawba | 6 |
| 6 | Virginia | 26 | | | | 0 | Clemson | 6 | 7 | Carolina | 13 |
| 0 | Clemson | 13 | | | | 46 | Davidson | 0 | 6 | Wake Forest | 6 |
| 14 | Vs. Military | 21 | | | | 0 | Carolina | 14 | 0 | Clemson | 27 |
| 15 | Wake Forest | 19 | | | | 7 | Chattanooga | 0 | 0 | Duke | 7 |
| 20 | Wm. & Mary | 6 | | | | 13 | Wake Forest | 34 | 0 | Wm. & Mary | 34 |
| 6 | Va. Tech | 0 | | | | 20 | Duquesne | 6 | 34 | Virginia Tech | 6 |
| 13 | Duke U. | 26 | | | | 14 | Virginia | 21 | 7 | Richmond | 0 |
| 7 | Miami U. | 21 | | | | 6 | Wm. & Mary | 26 | 13 | Davidson | 7 |
| | | | | | | 7 | Villanova | 21 | 16 | Maryland | 13 |
| 131 | Totals | 144 | | | | 107 | Totals | 128 | 82 | Totals | 119 |

COACHING RECORD
 Won 33, Lost 31

SCORING RECORD
 State 942, Opponents 770

(Continued from page 20)

as much strength on our relay team, but our boys are working hard and may spring a few surprises."

Casey is vitally interested in the so-called minor sports at State as well as football, baseball and basketball. His initiative in starting the North Caro-

line Cross-Country and Track Championships have brought two outstanding events to the State campus. He has been praised highly for his work with both track and cross-country and follows both sports with the same interest that he has always had in his own swimming teams.

WALLER and SMITH
Photographers

APPLICATION PHOTOS
FINE PORTRAITS

12 E. HARGETT ST. PHONE 7708

LANE TRUCKING CO.

R. H. LANE, Prop.

CRUSHED STONE
SAND — GRAVEL
TOPSOIL



CONTRACT HAULING

Dial 3-4685 — If No Answer 2-0629

E. Dixie Drive

Warren's Restaurant
HOME COOKED FOODS

* *
Air Conditioned for Your Comfort
 * *

301 W. Martin St. Phone 7466

HORACE (Horse) HENDRICKSON, Backfield Coach and Chief Scout



Newest addition to the Wolfpack coaching staff is Horace Hendrickson, former Duke University football star, who takes over as backfield coach and chief scout. Hendrickson assumed his new duties August 1, 1951.

Hendrickson has a wealth of experience on the gridiron. After a colorful career at Duke as quarterback under Coach Wallace Wade's 1933 Southern Conference champions, "Horse" was retained as assistant freshman football coach at the Methodist institution until 1937 when he was named athletic director and head football coach at Elon College. Hendrickson remained at Elon until 1942 winning two North State Conference football titles. In 1942 Hendrickson moved to the University of Pennsylvania where he served as backfield coach under George Munger through 1948.

During Hendrickson's tenure at Penn the Quakers captured the Ivy League football championship each season. At Penn Hendrickson also served as head baseball coach. In 1948 Hendrickson joined Carl Voyles on the staff of the professional Brooklyn Dodgers as backfield coach and chief scout. "Horse" remained with Brooklyn until the Dodger football team was dissolved and in 1949 he returned to Duke where he was head coach of all freshmen teams. Hendrickson's frosh squads at Duke were among the best in the Southern Conference.

Besides his football know-how, Hendrickson is a first-rate basketball and baseball coach. At Elon College the popular Beaver Falls, Pa. native won two North State Conference basketball championships and two baseball titles. At Duke as an under-

FIRST-CITIZENS BANK & TRUST COMPANY

NORTH CAROLINA

Three Offices in Raleigh:

20 E. MARTIN ST.

617 E. HILLSBORO ST.

704 N. PERSON ST.

Established 1898

Member of Federal Deposit Insurance Corporation

graduate Hendrickson was a star third baseman under Coach Jack Coombs and was a regular on the basketball squad under Coach Eddie Cameron. During his senior year he was one of the few men in Duke athletic history to earn three varsity monograms.

Hendrickson's early career in athletics began at Kiski Institute when he was a top flight star in football, baseball and basketball. After his prep school graduation he entered Duke in the fall of 1930. He was a member of Coach Wallace Wade's first Blue Devil team in 1931 and in 1933 starred in Duke's 10-2 upset victory over Tennessee.

Coach Hendrickson will confine his duties to football at State, but is certain to be a close follower of baseball and basketball teams.

MILLS CUT RATE

2114 Hillsboro St.
Across from the Tower

SANDWICHES — SODAS — STATIONERY
TOILETRIES

Open Till Ten

We're for N. C. State

Win or Lose!

★

INSURE WITH US AND YOU CAN'T
LOSE

★

ASSOCIATED INSURERS

INC.

★

HUGH H. MURRAY, JR., ('32)
HARRY R. RANDALL, C.L.U.
WALTER L. CHAMBERS, ('38)
R. H. KING
TED DICK

415 Fayetteville St.

Phone 4426

RALEIGH

ALBERT ROTELLA, Line Coach



A native of Paterson, N. J. and University of Tennessee alumnus, 200-pound Al Rotella has held forth as Wolfpack line coach for the past three years, joining State staff at the beginning of the 1948 season.

Jovial, smiling, Al has turned in a topnotch job grooming State's forwards on both offense and defense. He has earned the respect of more experienced

coaches over the Southern Conference and has worked tirelessly, often under handicaps caused by the lack of manpower, to turn out some of the best sets of linemen in State College history.

Rotella learned his football under Gen. Bob Neyland at the University of Tennessee where he served for four seasons. He came directly to the Wolfpack coaching staff after his graduation at Tennessee and with the personal recommendation of Gen. Neyland.

Rotella entered Tennessee in 1943 after starring for three years at Paterson (N. J.) High. His playing career was interrupted by World War II, but after his discharge he returned in 1946 and 1947 to see service in the Volunteer line.

During World War II Rotella saw combat service with the 38th Regiment of the famed 2nd Division. He was wounded in action in the Battle of the Bulge in December, 1944.

A popular figure, Rotella is a fun-loving, easy-going, hard-worker. He is particularly proud of one of his fellow-townsmen, Tackle Elmer Costa of Paterson, N. J., whom he has groomed into an All-America linesman. It was Rotella who persuaded Costa to give up a job as a truck driver in Paterson to enroll at State in 1948. Costa last year was named to the first-team All-Players All-America selected annually by the Chicago *Tribune* and he is a leading All-America candidate this season.

DICK PEACOCK, Assistant Line Coach



A graduate in Textiles at State, Dick Peacock is one of two former Wolfpack stars on the coaching staff. Dick, a native of Lexington, N. C., played center under Coach Beattie Feathers in 1946 and

1947 following his discharge from the Army Air Corps where he served as a bomber pilot.

Prior to his entry into the service Peacock played two seasons under Coach Gordon (Chubby) Kirkland at Catawba College at Salisbury, N. C. He transferred to State after the war in order to go into Textiles.

Peacock became State's first full-time freshman football coach after World War II when he was named to that post in 1949. His team won three games and lost two. Last season Peacock moved up to the varsity as assistant line coach and he will serve in that capacity again during the coming season.

Well-versed in the Wolfpack style of line-play Peacock works primarily with the State centers on both offense and defense. He also aids Line Coach Al Rotella with other line positions.

Last season Peacock's accurate scouting of State's opponent proved a big factor in the winning of several games. His report on Maryland's Terrapins was regarded by Coach Feathers as one of the big reasons why the Wolfpack scored a surprising upset victory.

Coach Peacock is married to the former May Pleasant of Raleigh.

LAND'S, Inc.



Raleigh's Leading

Credit Jewelers



137 Fayetteville Street

Tel. 2-3751

WOLFPACK BOOSTERS

VISIT OUR STORE FOR
NATIONALLY FAMOUS
MERCHANDISE

Clothing by

HART SCHAFFNER & MARX
BOTANY 500 TAILORED BY DAROFF
MICHAELS - STERN

Hats by

STETSON and DOBBS

Shirts by

ARROW, ENRO and MANHATTAN

McLeod & Watson Co.

ODD FELLOWS TEMPLE

**RALEIGH'S MOST COMPLETE
DEPARTMENT STORE**

- where good quality costs less -



Over A Mile Of
FREE Storeside Parking

GWYNN FLETCHER, Assistant Backfield Coach



Named to the State staff during the past summer, Gwynn Fletcher, a native of Barium Springs, N. C., starred for three seasons at tailback for Coach Beattie Feathers' Wolfpack from 1946 through 1948. He is a graduate of State in Industrial and Rural Recreation.

Gwynn enrolled at State in 1946 after a hitch in the Navy during World War II. Prior to entering service he played freshman football at Davidson College. Fletcher understudied Tailback Howard Turner during the 1946 season and performed brilliantly as both runner and passer. Despite a hand injury following the 1946 season which kept him out of the 'Gator Bowl game in Jacksonville, Fla., Fletcher came back in 1947 to spearhead the Wolfpack team to five wins, and a tie in nine games.

For the past two seasons Fletcher has acted as an assistant freshman football coach. This year he steps up to the varsity squad and will handle general assignments, concentrating primarily on work with the Wolfpack backfield and helping Coach Feathers. Fletcher is a welcomed addition to the State staff. His knowledge of the Wolfpack style of play is expected to prove valuable to the squad.

Coach Fletcher is married and he and his wife make their home in Raleigh.

Line-up With—

EARL'S GRILL

FINE FOODS — CHICKEN — STEAK
AND SEAFOODS

Air-Conditioned for Your Comfort

120 S. Salisbury

Phone 2-0231

Building Materials



of Every Kind

Capitol City Lumber Company

Box 5095

Raleigh, N. C.

State College Station

Telephone 6493

Hudson-Belt

EASTERN CAROLINA'S LARGEST STORE

THOMAS FITZGIBBONS, Head Trainer and Cross Country Coach



Tom Fitzgibbons, a native of Milwaukee, Wis., is a familiar figure around State's athletic teams. He was appointed head trainer and track and cross country coach in June, 1949 and has posted a brilliant record.

Coming to State from George Washington High,

Alexandria, Va., where he was trainer and track coach, Fitzgibbons has turned out some of the best cinder teams in the college's history along with his duties as trainer. His 1949 and 1950 cross country squads were undefeated in Big Four competition and his track teams have been impressive.

Fitzgibbons has an outstanding knowledge of administering treatment for athletic injuries. He has kept players on the field during the past two seasons where a less experienced man might have failed. His ability at repairing bruised muscles and pulled tendons has meant much to State's football effort at a time when manpower was of extreme importance.

The 46-year old "Fitz" is a graduate of the University of Wisconsin where he took a B.S. degree in physical education. After his graduation he served for a long period at the University of Toledo under Dr. C. W. Spears, one of the nation's most brilliant college trainers. During his undergraduate days at Wisconsin he served as an assistant trainer to T. C. Jones, long-time trainer of Wisconsin athletic teams.

During World War II Fitzgibbons served with the Medical Corps for two years. Most of his duties were as an instructor for a medical detachment. Following his discharge from the service Fitzgibbons took up the post at Alexandria, Va., where he turned out three Virginia state championship track squads.

Notice

COLLEGE SODA SHOP

Under New Management

PETE KELLY

A State Man

"Meet at Pete's"

COLD BEER TILL 11:45

PHONE 2-0888

FRIENDLY CLEANERS

We Clean Clothes Clean

2910 HILLSBORO



BOHEMIA RESTAURANT

Imported and Domestic Delicatessen

FAMOUS EUROPEAN COOKING

Telephone 3-0621

2508½ Hillsboro St.

Raleigh, N. C.

NORTH CAROLINA STATE PLAYERS



WILLARD, Gene—190-pounds, 18-years old, 6-6, Freshman. Needs experience, but is hustler. Started out on B-squad group in early work, but is due to move up if improvement continues. Will probably get chance on defense in later games. Studying Rural and Industrial Recreation. Hometown: Buffalo, N. Y.



VIVINO, David—190-pounds, 6-9, 19-years old, Freshman. Staidout at Paterson, N. J., High for three seasons. Candidate for center position. Likely is at least one year away from regular action, but is expected to improve as season progresses.



BARRINGER, Joe—5-10, 175 pounds, Midway Park, N. C. Freshman. Standout prep school performer for past two seasons and can play either fullback or blocking back. Has been used frequently at fullback in early work. Probably will have to wait at least one year before seeing much varsity action.

One Stop Building Supply Yard

OLDHAM & WORTH, INC.

*Most Convenient Location In
Raleigh To Buy*

Corner West and Cabarrus

Phone 2-2824

FERGUSON'S HARDWARE



We Specialize in Service



2904 Hillsboro St. — Phone 2-4877 and 2-3030

Hillsboro Cut Rate

Home of best Hot Dog in Raleigh

Open 16 Hours a Day

LET'S GO TEAM

WE APPRECIATE ALL BUSINESS

Across from College



Previous Scores with 1951 Opponents

| | | | |
|-----------------------|------|----|--|
| N. C. STATE | | | |
| CATAWBA | | | |
| Won 2, Lost 9, Tied 0 | | | |
| 12 | 1944 | 7 | |
| 7 | 1950 | 6 | |
| 19 | | 13 | |

| | | | |
|------------------------|------|-----|--|
| N. C. STATE | | | |
| NORTH CAROLINA | | | |
| Won 5, Lost 20, Tied 6 | | | |
| 0 | 1894 | 44 | |
| 0 | 1894 | 16 | |
| 0 | 1895 | 36 | |
| 0 | 1897 | 40 | |
| 0 | 1898 | 24 | |
| 11 | 1899 | 11 | |
| 0 | 1901 | 36 | |
| 0 | 1901 | 20 | |
| 0 | 1902 | 0 | |
| 6 | 1904 | 6 | |
| 0 | 1905 | 0 | |
| 12 | 1919 | 18 | |
| 13 | 1920 | 3 | |
| 7 | 1921 | 36 | |
| 9 | 1922 | 14 | |
| 0 | 1923 | 14 | |
| 0 | 1924 | 10 | |
| 0 | 1925 | 17 | |
| 0 | 1926 | 12 | |
| 19 | 1927 | 6 | |
| 6 | 1928 | 46 | |
| 6 | 1929 | 32 | |
| 6 | 1930 | 18 | |
| 13 | 1931 | 13 | |
| 0 | 1932 | 0 | |
| 0 | 1933 | 7 | |
| 7 | 1934 | 7 | |
| 6 | 1935 | 21 | |
| 6 | 1936 | 21 | |
| 0 | 1937 | 29 | |
| 0 | 1938 | 21 | |
| 0 | 1939 | 17 | |
| 7 | 1940 | 13 | |
| 13 | 1941 | 7 | |
| 21 | 1942 | 27 | |
| 0 | 1943 | 14 | |
| 7 | 1944 | 41 | |
| 0 | 1948 | 11 | |
| 6 | 1949 | 26 | |
| 7 | 1950 | 19 | |
| 196 | | 710 | |

| | | | |
|-------------------------|------|----|--|
| N. C. STATE | | | |
| WAKE FOREST | | | |
| Won 24, Lost 17, Tied 3 | | | |
| 25 | 1908 | 0 | |
| 28 | 1910 | 3 | |
| 18 | 1911 | 5 | |
| 12 | 1912 | 0 | |
| 37 | 1913 | 0 | |
| 51 | 1914 | 0 | |
| 7 | 1915 | 0 | |
| 17 | 1916 | 0 | |
| 6 | 1917 | 6 | |
| 0 | 1918 | 21 | |
| 21 | 1919 | 7 | |
| 49 | 1920 | 7 | |
| 14 | 1921 | 0 | |

| | | | |
|------------------------|------|----|--|
| N. C. STATE | | | |
| DUKE | | | |
| Won 7, Lost 18, Tied 1 | | | |
| 14 | 1924 | 0 | |
| 7 | 1925 | 0 | |
| 26 | 1926 | 19 | |
| 20 | 1927 | 18 | |

| | | | |
|-----|------|-----|--|
| 32 | 1922 | 0 | |
| 0 | 1923 | 14 | |
| 0 | 1924 | 12 | |
| 7 | 1925 | 0 | |
| 8 | 1926 | 6 | |
| 30 | 1927 | 7 | |
| 37 | 1928 | 0 | |
| 0 | 1929 | 6 | |
| 0 | 1930 | 6 | |
| 0 | 1931 | 6 | |
| 0 | 1932 | 0 | |
| 12 | 1934 | 13 | |
| 21 | 1935 | 6 | |
| 12 | 1936 | 13 | |
| 20 | 1937 | 0 | |
| 19 | 1938 | 7 | |
| 14 | 1939 | 32 | |
| 0 | 1940 | 20 | |
| 0 | 1941 | 7 | |
| 0 | 1942 | 0 | |
| 6 | 1943 | 54 | |
| 7 | 1944 | 21 | |
| 18 | 1945 | 19 | |
| 14 | 1946 | 6 | |
| 20 | 1947 | 0 | |
| 13 | 1948 | 34 | |
| 27 | 1949 | 14 | |
| 6 | 1950 | 6 | |
| 597 | | 478 | |

| | | | |
|-------------------------|------|-----|--|
| N. C. STATE | | | |
| CLEMSON | | | |
| Won 7, Lost 12, Tied 14 | | | |
| 0 | 1899 | 24 | |
| 6 | 1902 | 10 | |
| 0 | 1903 | 18 | |
| 18 | 1904 | 0 | |
| 0 | 1906 | 0 | |
| 12 | 1925 | 0 | |
| 0 | 1926 | 7 | |
| 0 | 1927 | 6 | |
| 0 | 1928 | 6 | |
| 0 | 1929 | 26 | |
| 0 | 1930 | 26 | |
| 0 | 1931 | 6 | |
| 13 | 1932 | 0 | |
| 0 | 1933 | 8 | |
| 0 | 1934 | 12 | |
| 6 | 1935 | 25 | |
| 6 | 1940 | 24 | |
| 7 | 1941 | 37 | |
| 7 | 1942 | 6 | |
| 7 | 1943 | 19 | |
| 18 | 1947 | 0 | |
| 0 | 1948 | 6 | |
| 0 | 1949 | 7 | |
| 0 | 1950 | 27 | |
| 152 | | 326 | |

| | | | |
|---------------------------|------|-----|--|
| N. C. STATE | | | |
| WILLIAM & MARY | | | |
| Won 5, Lost 3, Tied 0 | | | |
| 81 | 1926 | 0 | |
| 16 | 1940 | 0 | |
| 13 | 1941 | 0 | |
| 19 | 1944 | 0 | |
| 20 | 1948 | 6 | |
| 6 | 1948 | 26 | |
| 7 | 1949 | 33 | |
| 10 | 1950 | 34 | |
| 162 | | 101 | |

| | | | |
|-----|------|-----|--|
| 12 | 1928 | 14 | |
| 12 | 1929 | 19 | |
| 0 | 1930 | 18 | |
| 14 | 1931 | 0 | |
| 6 | 1932 | 0 | |
| 0 | 1933 | 7 | |
| 0 | 1934 | 32 | |
| 0 | 1935 | 3 | |
| 0 | 1936 | 13 | |
| 7 | 1937 | 20 | |
| 0 | 1938 | 7 | |
| 6 | 1939 | 28 | |
| 6 | 1940 | 42 | |
| 6 | 1941 | 35 | |
| 0 | 1942 | 47 | |
| 0 | 1943 | 75 | |
| 13 | 1945 | 26 | |
| 13 | 1946 | 6 | |
| 0 | 1947 | 7 | |
| 0 | 1948 | 0 | |
| 13 | 1949 | 14 | |
| 0 | 1950 | 7 | |
| 171 | | 477 | |

| | | | |
|-------------------------|------|-----|--|
| N. C. STATE | | | |
| V.P.I. | | | |
| Won 12, Lost 14, Tied 2 | | | |
| 2 | 1900 | 18 | |
| 6 | 1902 | 10 | |
| 0 | 1903 | 21 | |
| 14 | 1906 | 6 | |
| 6 | 1908 | 5 | |
| 5 | 1909 | 18 | |
| 0 | 1910 | 3 | |
| 0 | 1911 | 3 | |
| 0 | 1914 | 3 | |
| 0 | 1916 | 40 | |
| 0 | 1917 | 7 | |
| 7 | 1918 | 25 | |
| 3 | 1919 | 0 | |
| 14 | 1920 | 6 | |
| 3 | 1921 | 7 | |
| 0 | 1922 | 24 | |
| 0 | 1923 | 16 | |
| 9 | 1924 | 3 | |
| 0 | 1925 | 0 | |
| 0 | 1934 | 7 | |
| 4 | 1935 | 6 | |
| 13 | 1936 | 0 | |
| 13 | 1937 | 7 | |
| 14 | 1938 | 7 | |
| 14 | 1941 | 0 | |
| 6 | 1945 | 0 | |
| 6 | 1946 | 14 | |
| 14 | 1949 | 23 | |
| 34 | 1950 | 6 | |
| 163 | | 269 | |

| | | | |
|-----------------------|------|----|--|
| N. C. STATE | | | |
| MARYLAND | | | |
| Won 4, Lost 3, Tied 3 | | | |
| 7 | 1909 | 0 | |
| 10 | 1917 | 6 | |
| 6 | 1921 | 6 | |
| 6 | 1922 | 7 | |
| 0 | 1924 | 0 | |
| 27 | 1946 | 7 | |
| 0 | 1947 | 0 | |
| 0 | 1949 | 14 | |
| 16 | 1950 | 13 | |
| 79 | | 91 | |

| | | | |
|---------------------|--|--|--|
| N. C. STATE | | | |
| VS. | | | |
| LOUISVILLE | | | |
| (Have Never Played) | | | |

| | | | |
|-------------------------|------|-----|--|
| N. C. STATE | | | |
| DAVIDSON | | | |
| Won 25, Lost 10, Tied 6 | | | |
| 0 | 1899 | 0 | |
| 0 | 1900 | 17 | |
| 0 | 1901 | 7 | |
| 0 | 1902 | 5 | |
| 19 | 1905 | 0 | |
| 6 | 1907 | 0 | |
| 21 | 1908 | 0 | |
| 0 | 1912 | 0 | |
| 26 | 1913 | 6 | |
| 0 | 1916 | 16 | |
| 0 | 1917 | 3 | |
| 36 | 1919 | 6 | |
| 23 | 1920 | 0 | |
| 13 | 1921 | 3 | |
| 13 | 1922 | 0 | |
| 12 | 1923 | 6 | |
| 10 | 1924 | 10 | |
| 0 | 1925 | 9 | |
| 0 | 1926 | 3 | |
| 6 | 1927 | 6 | |
| 14 | 1928 | 7 | |
| 0 | 1929 | 13 | |
| 0 | 1930 | 12 | |
| 18 | 1931 | 7 | |
| 7 | 1932 | 3 | |
| 6 | 1933 | 6 | |
| 7 | 1934 | 0 | |
| 0 | 1935 | 7 | |
| 2 | 1936 | 6 | |
| 6 | 1937 | 2 | |
| 19 | 1938 | 7 | |
| 14 | 1939 | 7 | |
| 34 | 1940 | 0 | |
| 6 | 1941 | 6 | |
| 0 | 1942 | 0 | |
| 29 | 1943 | 0 | |
| 25 | 1946 | 0 | |
| 18 | 1947 | 0 | |
| 40 | 1948 | 0 | |
| 14 | 1949 | 29 | |
| 15 | 1950 | 7 | |
| 480 | | 294 | |

| | | | |
|-----------------------|------|----|--|
| N. C. STATE | | | |
| MARYLAND | | | |
| Won 4, Lost 3, Tied 3 | | | |
| 7 | 1909 | 0 | |
| 10 | 1917 | 6 | |
| 6 | 1921 | 6 | |
| 6 | 1922 | 7 | |
| 0 | 1924 | 0 | |
| 27 | 1946 | 7 | |
| 0 | 1947 | 0 | |
| 0 | 1949 | 14 | |
| 16 | 1950 | 13 | |
| 79 | | 91 | |

New... Modern

WAKE CAFE

CHOICE WESTERN STEAKS AND CHOPS
SEAFOODS — CHICKEN

FINE FOODS

LUNCHES AND DINNERS

106 S. Wilmington St.

Phone 9217

VISIT—

Your New Soft Ice Cream Bar

Dari Delite

2600 HILLSBORO



ELMER COSTA

N. C. State's All-America

Compliments

of

DUNN'S ICE CREAM

514 Newbern Ave.

This Game Being Photographed by—

A Bell-Howell Camera



STONE'S

Phone 2-2335

AUTHORIZED BELL-HOWELL DEALERS

*COSTA, Elmer—6-1, 215 pounds, Senior, Paterson, N. J. Undoubtedly one of the greatest linemen in the history of the Southern Conference, big Elmer made numerous All-America selections last year, including the first-team All-Players, All-America named by the Chicago Tribune. Costa is a terrific ball-player in every respect. Handles offensive and defensive assignments equally as well and has on more than one occasion gone entire distance in crucial games for the Wolfpack. Has amazing speed for his size and is regarded as one of the best professional football prospects ever turned out at State. Due to an error in the college football program last year, Costa was listed as a senior and because of this was on the draft list of no less than five professional teams last season. Last year he was acclaimed all over for his great, slashing line play. Selected "Lineman of the Week" for the entire nation by the Associated Press, Oct. 21, 1950, for his part in State's amazing 16-13 upset of highly-favored Maryland when he recovered three fumbles and personally halted at least three drives inside State's five yard line. Voted by squad as "Most Valuable Player" last season. Will conclude his collegiate career this season and is already one of the top candidates in the nation for All-America selection. Barring injury "Elmer" should wind up his State career in a blaze of glory. Studying Industrial and Rural Recreation, 25-years old. Navy veteran.

Steel Tailored To Your Needs

- STRUCTURAL
- ORNAMENTAL
- REINFORCING
- WINDOWS
- DOORS AND FRAMES



Telephone 8828

Post Office Box 510

Office, Plant and Warehouse . . . RALEIGH

"SAVE WITH STEEL"



Honeycutt INC.
FASHIONS FOR MEN
1916 HILLSBORO • RALEIGH

N. C. STATE COLLEGE MOVES AHEAD

BY RUDOLPH PATE

North Carolina State College is aptly the Cinderella of the South's educational institutions. Kicked around at the start, she has grown into a proud Alma Mater who holds her head high among the foremost colleges and universities in the Western Hemisphere.

Today the college stands as a living monument to the far-sighted citizens who, roughly 70 years ago, aroused the State with their inspired crusade for practical education in the technological sciences.

On October 3, 1889, the college opened its doors. The 45 students were greeted by six professors, including the first president, Col. Alexander Q. Holladay. The physical plant consisted of one building, later named Holladay Hall, and a stable.

State College, meek but confident, was ready for business.

Some of the greatest men of their day sadly shook their heads over the futility of it all, loudly predicting a brief but misguided existence for the educational stripling. Even neighboring college presidents cited the uselessness of giving higher education to "mechanics and farmers."

But State College from the start had a rugged, individual spirit that throughout the years has set it apart from many other institutions. In the single building, the handful of students slept, ate and studied, and from it they sallied forth daily to work the college's 60-acre farm with the two little mules and one horse that were the college's sole work stock.

Without plumbing, running water or electric lights, the first students buckled down to the task of confounding the prophets of doom.

Next year the college had 84 students. Enrollment was 110 in its third year, and in 1918 it passed the 1,000 mark.

An all-time high was set in 1947 when more than 5,300 students registered—5,300 young men and women with confidence that "farmers and mechanics" had best be educated. And before them, gone into

every nook and corner of the world, are thousands of well-trained, substantial alumni who had the same idea—men who are throwing bridges over giant chasms, teaching farmers all that science has learned about agriculture, building dams to rescue wastelands and give light to millions, stringing highways throughout the land, clothing the civilized world in the best raiment the mighty textile industry can produce, creating new magic in chemistry and ceramics so that the world will be a more comfortable and beautiful world, developing and conserving our natural resources, putting power into mechanical giants, designing new homes and buildings, getting the most from their farms, and delving into a thousand research projects from which a richer and fuller life for untold millions will emerge.

At the Golden Anniversary celebration on October 3, 1939, the late Governor and Ambassador to the Court of St. James, O. Max Gardner, an alumnus of both North Carolina State College and the University at Chapel Hill, described the creation of State College as the symbol of democratic progress in higher education in North Carolina and added:

"Its founding broke the log jam that held back the benefits of education to the sons and daughters of the masses of our people. It literally sprang from the grass roots of democracy."

North Carolina State College, now beginning its 63rd year of service to the State and nation, has risen to new heights in the academic world and is a world-famed center of learning and research. It is headed by Chancellor J. H. Harrelson, a gentleman whose eminent leadership has seen the college pioneer in many fields of activity and reach the zenith in others.

With a current expansion program of \$15,000,000 now in progress, with higher State appropriations for its operations, and with firm support from a number of foundations, the college is faced with its brightest future—an era which may mean better days for all North Carolinians.

Bosse Jewelers'

333 Fayetteville St.

"Opposite the S and W Cafeteria"

BRYAN'S FINE FABRIC

2003 Fairview Road



DRAPERY — SLIPCOVER — FABRICS

DRESS — SUITING — FORMAL



Welcome—State College Students

We are your headquarters for

- ★ School Supplies ★ Sewing Notions ★ Toys
- ★ Stationery ★ Toilet Goods ★ Candy
- ★ Hardware and Electrical Goods

Make us your one-stop shopping center

KEN-BEN
5c-10c-25c Store

2506 Hillsboro St.

Across from College

MILTON'S
Clothing Cupboard

2404 Hillsboro St.

FINE CLOTHES IN
THE CAMPUS TRADITION

Also Located in Chapel Hill

Uzzle's Soda & Sandwich Shop

- DRUGS • BREAKFAST
- MAGAZINES

Open from 7 a.m.-10 p.m.

— Hurry Back—

2404 Hillsboro — — — Across from Ricks Hall

MANMUR BARBER SHOP

Air Conditioned

FIVE REGISTERED BARBERS



It Pays to Look Well



Across from Patterson Hall





Snake oil is wonderful stuff!

"Just try it once, dear friends, just try it once and you'll never be without it. For nervousness, for upset stomach, for all types of aches and ails, for building the blood! It's good, my friends. It's just naturally the best!"

There's a peculiar brand of "snake oil" being peddled in America today. It's the "cure-all" variety whose sponsors talk like this: "Let the federal government solve our problems by running things. Let it take over the doctors . . . the railroads . . . the electric light and power companies . . . and other industries and services."

Most of these people would say they're against socialism. They just think control of this business or that industry or service by the government would benefit themselves, or their community, or maybe everybody.

What they don't realize is: when any government takes over enough things, socialism comes automatically.

Every time you let government take another control, you lose another freedom. And every lost freedom moves you closer to a socialistic U. S. A. Socialism's promises might sound inviting. But so do the promises of the snake oil peddler. Both are dangerous when people fall for them.

* * *

The business-managed, tax-paying Electric Light and Power Companies like this one are fighting creeping socialism wherever we find it. We believe it's your battle, too. Why not talk it over this week with your friends? The threat of American socialism is everyone's problem because it's everyone's danger.

CAROLINA POWER & LIGHT COMPANY

North Carolina's Miss America



Miss Lulong Ogburn

Smithfield, North Carolina

NORTH CAROLINA STATE PLAYERS



*ALLMAN, Bernard — 5-11, 195 pounds. Senior, Parkersburg, W. Va. Veteran letterman and one of the squad's best defensive performers. Converted from blocking back in sophomore season. Hampered by knee injury last year, but apparently in top shape for '51. All-State and member of West Virginia All-Star team as prep schooler in 1946-47. Played in North-South annual game in West Virginia. Lettered for four seasons in high school. 22-years old. Should be regular this year.



PIERCE, Junior—6-2, 200 pounds. Sophomore, Plymouth, N. C. Probably the top sophomore on the '51 squad, Pierce was the backbone of the freshman line last year. Has promise of becoming one of the greatest pivot men in history of the college and is certain to play big role behind Tofaute at center this season. Has plenty of know-how backing up line and is good ball-snapper. Very aggressive and likes it rough and tough. Standout at Plymouth High for three years. Studying Rural and Industrial Recreation. 19-years old.



*SCHACHT, Walter—5-9, 190 pounds. Senior, Alexandria, Va. Undoubtedly one of the stars on the '51 team, Schacht is an outstanding offensive and defensive performer. Will be a leading All-Southern candidate in the tradition of his predecessors at guard for the Wolfpack, (Musser, Watts, etc.). An outstanding campus leader and student. President of the N. C. State Monogram Club and member of Athletic Council. Built low to the ground and drives like a tank. 23-years old. Studying Textiles. Marine Corps veteran.

Happy Motoring

Starts At Your Esso Store



Drive Into

HOLLOWAY'S ESSO SERVICE

Corner of Oberlin Rd. and Clark Ave.
in Raleigh's Cameron Village

Telephone 9435

Compliments of

HOTEL RALEIGH

Corner Martin & McDowell Sts.

ATKINS MOTORS INC.

★

Nash Sales and Service

★

GENERAL AUTO REPAIRING

108 S. Blount St.

Raleigh, N. C.

T. L. BUTLER

Adjuster



308-9 Commercial Building

Telephone 3-4651

. . . the label that distinguishes the finest.
Apparel and Accessories wherever
Carolinians gather.

Ivey-Taylor Co.

THE SHOW PLACE
OF THE CAROLINAS

Recapping

Vulcanizing

H. H. TIRE RETREADING CO.

FISK Tires and Tubes

T. V. FERGUSON, '26—Owner

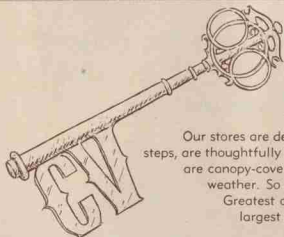
119 East Davie Street

Phone 2-0492

Raleigh, N. C.



"Coach said they might be overconfident!"



YOUR KEY TO EASY SHOPPING
FITS 28 DOORS IN RALEIGH'S
WONDERFUL

Cameron Village

Our stores are designed on street-floor level to save shopping steps, are thoughtfully located to save shopping time. Our sidewalks are canopy-covered for your shopping protection during bad weather. So . . . "Come Shop As You Please With The Greatest of Ease In Wonderful Cameron Village" . . . largest residential shopping center in the southeast!

★ A.B.C. STORE ★ VILLAGE BARBER SHOP ★ DAVE HUMPHREY'S VILLAGE BAKERY AND DAIRY BAR ★ BURTON'S READY-TO-WEAR ★ CRADLE SHOP ★ COLONIAL STORES ★ PHR CENTER FURNITURE ★ JEAN DICKINSON ★ ELITE SHOP OF FASHION ★ HOLLOWAY'S ESSO ★ HOLLINGS-WORTH SHOE REPAIR ★ LAUNDERMATIC ★ MAM'SELLE MILLINERY ★ MEDLIN-DAVIS CLEANERS ★ NEWTON LAUNDRY & CLEANERS ★ NOWELL'S MEN'S APPAREL ★ VILLAGE PHARMACY ★ VILLAGE RESTAURANT ★ ROSE'S 5-10-25c STORE ★ STREETER'S BUTCHER SHOP ★ SEARS, ROEBUCK AND CO. ★ VILLAGE THEATRE ★ WACHOVIA BANK & TRUST CO. ★ WATSON SEAFOOD & POULTRY ★ WILLETT'S BEAUTY SHOP ★ APEX GARDEN SHOP ★ STEPHENSON MUSIC CO. ★ MIRIAM'S BRIDAL SHOP

Acres Of Off-The Street Parking

EVERY VILLAGE SHOP OPEN FRIDAY NIGHTS 'TIL 9:00

NORTH CAROLINA STATE PLAYERS



WYLES, Carl—5-8, 180 pounds. Sophomore. Buffalo, N. Y. Switched from fullback where he operated in the split-T formation as freshman. Wyles is promising as blocker. Expected to provide reserve strength at blocking post and probably will see some action. Good tackler and backs up line well on defense. Prepved at New Kensington High, Buffalo, N. Y. All-City selection in 1949. Three-sport letterman. Studying Electrical Engineering. Top student. 20-years old.



O'HOURLKE, James—6-0, 175 pounds. Senior. Pittsburgh, Pa. Captain of the 1951 team. O'Hourke is one of the best men for his size in the Southern Conference. He'll be a top man for Slate in '51 and will be used on both offense and defense. He is proof-positive that it doesn't take a 200-pound frame to play topnotch fullback. Studying Civil Engineering. Army veteran. 24-years old.



MARTINI, Ralph—5-11, 195 pounds. Sophomore. Niagara Falls, N. Y. Switched from fullback. Martini will give the blocking spot added depth. Has power and is good line backer. Probably will be used in relief roles only until gains additional experience at new position. Has ability and should produce. Three letterman in high school. Studying Rural and Industrial Recreation. 19-years old.

We Trade 'Em...

SEE US FIRST — FOR GOOD BUY

AUTO

MARVIN TYNDALL

Manager

Fayetteville St.

Raleigh, N. C.



TRADING POST

Your Independent

Car Dealer

Dial 3-8993

... We Please 'Em

GUARANTEE TO SATISFY

1929-1943 Football Record at N. C. State

(1944-50 record under Coach Beattie Feathers may be found on page 21.)

| 1929 | | 1932 | | 1935 | | 1938 | | 1941 | |
|------------------|----|-----------------------|----|-----------------------|----|-----------------------|----|-----------------------|----|
| Won 1, Lost 8 | | Won 6, Lost 1, Tied 1 | | Won 6, Lost 4 | | Won 3, Lost 7, Tied 1 | | Won 4, Lost 5, Tied 2 | |
| 6 Wash. & Lee | 27 | 38 Appalachain | 0 | 14 Davidson | 7 | 19 Davidson | 7 | 14 Richmond | 7 |
| 0 Clemson | 26 | 9 Richmond | 0 | 14 S. Carolina | 0 | 0 N. Carolina | 21 | 6 Davidson | 6 |
| 8 Wake Forest | 6 | 13 Clemson | 0 | 21 Wake Forest | 6 | 0 Alabama | 14 | 6 Clemson | 27 |
| 6 Michigan State | 40 | 0 Wake Forest | 0 | 0 Georgia | 13 | 19 Wake Forest | 7 | 0 Furman | 0 |
| 0 N. Carolina | 32 | 17 Florida | 6 | 20 Manhattan | 0 | 7 Furman | 7 | 0 Wake Forest | 7 |
| 0 Davidson | 13 | 0 N. Carolina | 13 | 6 N. Carolina | 35 | 0 V.P.L. | 7 | 44 Newberry | 0 |
| 12 Duke | 19 | 7 Davidson | 3 | 6 V.P.L. | 9 | 0 Detroit | 7 | 3 N. Carolina | 7 |
| 6 Villanova | 24 | 6 Duke | 0 | 6 Richmond | 0 | 0 Duke | 7 | 7 V.P.L. | 14 |
| 6 S. Carolina | 20 | 7 S. Carolina | 7 | 0 Duke | 7 | 0 Carnegie Tech | 14 | 7 Georgetown | 20 |
| | | | | 0 Catholic U. | 8 | 14 The Citadel | 6 | 6 Duke | 55 |
| | | | | | | | | 13 Wm. & Mary | 0 |
| 1930 | | 1933 | | 1936 | | 1939 | | 1942 | |
| Won 2, Lost 8 | | Won 1, Lost 5, Tied 3 | | Won 3, Lost 7 | | Won 2, Lost 8 | | Won 4, Lost 4, Tied 2 | |
| 37 High Point | 0 | 7 Catawba | 0 | 14 Elon | 0 | 18 Davidson | 14 | 0 Davidson | 0 |
| 0 Davidson | 12 | 0 Georgia | 20 | 6 Davidson | 14 | 0 Tennessee | 13 | 13 Richmond | 0 |
| 0 Florida | 27 | 0 Clemson | 9 | 0 Wake Forest | 9 | 6 Clemson | 25 | 7 Clemson | 6 |
| 0 Clemson | 27 | 0 Florida | 0 | 6 Manhattan | 13 | 0 Wake Forest | 32 | 7 N. C. Pre-Flight | 19 |
| 0 Wake Forest | 7 | 0 Wake Forest | 0 | 27 Furman | 0 | 6 Detroit | 21 | 0 Wake Forest | 0 |
| 14 Miss. State | 0 | 0 Wake Forest | 0 | 13 V.P.L. | 0 | 0 N. Carolina | 17 | 0 Holy Cross | 28 |
| 0 Presbyterian | 2 | 6 Davidson | 6 | 6 N. Carolina | 21 | 0 Duquesne | 7 | 21 N. Carolina | 14 |
| 6 North Carolina | 13 | 0 N. Carolina | 6 | 3 Boston College | 7 | 12 Furman | 7 | 2 Miami (Fla.) | 0 |
| 0 Duke | 18 | 0 S. Carolina | 14 | 6 Catholic U. | 7 | 0 Duke | 28 | 20 Georgetown | 28 |
| 0 South Carolina | 19 | | | 0 Duke | 13 | 7 Miami (Fla.) | 27 | 6 Duke | 47 |
| 1931 | | 1934 | | 1937 | | 1940 | | 1943 | |
| Won 3, Lost 6 | | Won 2, Lost 6, Tied 1 | | Won 5, Lost 3, Tied 1 | | Won 3, Lost 6 | | Won 3, Lost 6 | |
| 18 Davidson | 7 | 7 Davidson | 0 | 6 Davidson | 2 | 16 Wm. & Mary | 0 | 18 Newport News | 0 |
| 0 Florida | 34 | 12 Wake Forest | 13 | 0 N. Carolina | 20 | 34 Davidson | 0 | 7 Clemson | 19 |
| 0 Clemson | 6 | 6 South Carolina | 0 | 7 Furman | 7 | 7 Clemson | 26 | 0 Camp Davis | 27 |
| 0 Wake Forest | 6 | 0 Florida | 14 | 13 V.P.L. | 7 | 7 N. Carolina | 13 | 6 Wake Forest | 54 |
| 7 Catholic U. | 12 | 7 N. Carolina | 7 | 20 Wake Forest | 0 | 10 Miss. State | 26 | 7 Greenville AB | 6 |
| 15 N. Carolina | 18 | 6 Clemson | 12 | 12 Boston College | 7 | 6 Furman | 20 | 13 N. Carolina | 27 |
| 6 Miss. State | 0 | 6 V.P.L. | 7 | 26 The Citadel | 14 | 14 Wake Forest | 20 | 0 Duke | 75 |
| 14 Duke | 0 | 0 Georgia | 27 | 0 Manhattan | 15 | 20 The Citadel | 14 | 20 Davidson | 0 |
| 0 S. Carolina | 21 | 0 Duke | 32 | 7 Duke | 20 | 6 Duke | 42 | 7 N. C. Pre-Flight | 19 |

Compliments of

NASH-STEEL MOTOR CO.

- ★ Auto Repairs
- ★ Accessories
- ★ Paint As Low As \$25.00

★ ★ ★ ★

Distributors for

DODGE and PLYMOUTH CARS
DODGE JOB-RATED TRUCKS

201 W. Cabarrus

Phone 5571



Across from State College to render the State a
broader service.

ORDINARY

INDUSTRY

ACCIDENT

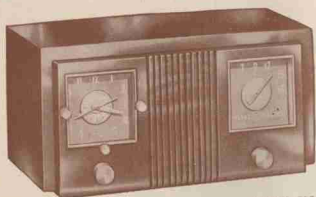
HEALTH

INDIVIDUAL AND GROUP PLANS

STATE CAPITAL LIFE INSURANCE COMPANY

RALEIGH, N. C.

FIGHT 'EM WOLFPACK!



MODEL 535

Other models available in four colors: Congo Brown, Alabaster Ivory, Persian Red and Porcelain White.

No Time Out with



CLOCK-RADIOS

You won't miss a play or a program with the "World's Most Useful Radio." It's a radio, a clock and an electronic servant. Dependable G-E electric clock turns radio and home appliances on and off automatically. Has extra tube to bring in distant stations sharply, clearly. Rich cordovan plastic cabinet.



MODEL 422

A new General Electric feature—a traveling dial light has been incorporated into these models. Known as the "Dial Beam," it automatically spot illuminates the dial when the receiver is turned on. As the pointer is moved from station to station, the light travels with it and spotlights each numeral on the dial face. This new feature helps the listener to tune in a station quickly and easily, and is particularly useful in darkened rooms. Choose from congo brown or alabaster ivory plastic.

**HEAR THE GAME
YOU WANT TO HEAR**



TABLE RADIOS

Listen to the G-E Football Roundup with Red Barber every Saturday over C.B.S.

Statistics of Catawba Football Squad 1951

ATHLETIC DIRECTOR
HEAD COACH
LINE COACH
ASSISTANT COACH

Gordon A. Kirkland
Robert B. Spangler
Marion Richards
Larry Taylor

ENDS

| No. | Name | Age | Weight | Height | Class | Home Town |
|-----|----------------|-----|--------|--------|-------|-----------------------|
| *54 | Bill Hunsucker | 23 | 192 | 6-2 | Sr. | High Point, N. C. |
| *47 | Bill Stanfield | 21 | 191 | 6-0 | Sr. | Winston-Salem, N. C. |
| *56 | Joe Oxendine | 21 | 190 | 6-1 | Sr. | Pembroke, N. C. |
| 29 | Dwight Crater | 19 | 170 | 6-1 | Soph. | Winston-Salem, N. C. |
| *44 | Bob Hamilton | 21 | 192 | 6-1 | Jr. | Allison Park, Pa. |
| 31 | Terrell Hall | 18 | 175 | 6-1 | Fr. | Barium Springs, N. C. |
| 24 | Baker Hood | 18 | 175 | 6-1 | Fr. | Morganton, N. C. |

TACKLES

| | | | | | | |
|-----|-----------------|----|-----|------|-------|-------------------|
| *62 | Bob Lee | 26 | 228 | 5-9 | Jr. | Bellwood, Pa. |
| *61 | George Fidler | 20 | 235 | 6-2 | Soph. | Burlington, N. C. |
| *46 | Raymond Ritchie | 21 | 192 | 6-0 | Jr. | Salisbury, N. C. |
| 63 | Tom Page | 25 | 220 | 6-4 | Fr. | Salisbury, N. C. |
| 58 | Gary Pruett | 18 | 190 | 5-11 | Fr. | Mount Airy, N. C. |

GUARDS

| | | | | | | |
|-----|---------------|----|-----|------|-------|-------------------|
| *49 | Ronald Rigby | 21 | 190 | 5-11 | Sr. | Jeanette, Pa. |
| *59 | Bill Peeler | 20 | 192 | 5-10 | Soph. | Salisbury, N. C. |
| *52 | Bill England | 19 | 190 | 6-2 | Soph. | Morganton, N. C. |
| 34 | Bill Smith | 18 | 180 | 5-10 | Fr. | Mooreville, N. C. |
| *97 | Page Lyster | 20 | 165 | 5-10 | Fr. | Salisbury, N. C. |
| 38 | Gordon Search | 18 | 165 | 5-11 | Fr. | Irvington, N. J. |
| 40 | Gerry Husser | 19 | 170 | 5-9 | Fr. | Advance, N. C. |
| 33 | Harry Lahn | 19 | 190 | 5-11 | Fr. | Bridgeton, N. J. |
| 41 | John Powell | 19 | 175 | 5-11 | Fr. | Bellwood, Pa. |

CENTERS

| | | | | | | |
|-----|-----------------|----|-----|------|-------|------------------|
| *53 | Earl Henry | 21 | 190 | 6-0 | Sr. | Bellwood, Pa. |
| 51 | Harvey Stratton | 19 | 180 | 6-0 | Soph. | Morganton, N. C. |
| 57 | Herbert Rhodes | 18 | 180 | 5-10 | Fr. | Salisbury, N. C. |

BACKS

| | | | | | | |
|-----|----------------|----|-----|------|-------|-----------------------|
| *28 | John Coble | 21 | 180 | 5-9 | Sr. | Mount Airy, N. C. |
| *48 | Joe Popp | 21 | 182 | 5-9 | Sr. | Conemaugh, Pa. |
| *30 | Bob Linder | 24 | 170 | 5-10 | Sr. | Salisbury, N. C. |
| *20 | Robert Ritchie | 21 | 150 | 5-10 | Soph. | Salisbury, N. C. |
| 26 | James Luciana | 20 | 166 | 5-10 | Jr. | Somerdale, N. J. |
| *22 | Bill Klutz | 20 | 180 | 5-10 | Soph. | Albemarle, N. C. |
| *42 | Elbert Holt | 19 | 170 | 6-1 | Soph. | Albemarle, N. C. |
| *18 | Roy Pickens | 21 | 160 | 5-8 | Soph. | Bellwood, Pa. |
| 25 | Paul Barnes | 19 | 155 | 5-10 | Fr. | Barium Springs, N. C. |
| 19 | Don Bowden | 18 | 155 | 5-10 | Fr. | Salisbury, N. C. |
| 22 | Mike Hoffer | 19 | 160 | 5-10 | Fr. | Bellwood, Pa. |
| 23 | Bobby Caldwell | 19 | 145 | 5-10 | Fr. | Newport News, Va. |
| *50 | Howard Crane | 18 | 192 | 6-3 | Soph. | Cherryville, N. C. |
| 21 | Harland Lore | 19 | 162 | 5-10 | Fr. | Bridgeton, N. J. |

* Denotes Lettermen

PROBABLE STARTING LINE UP—CATAWBA

| | | | | | | |
|-----------------------|--------------------|------------------------|------------------------|-----------------|---------------------|----------------------|
| LE Hunsucker 54 | LG Rigby 49 | LT R. Ritchie 46 | C Henry 53 | RT Lee 62 | RG England 52 | RE Oxendine 56 |
| TB Coble 28 | FB Linder 30 | BB Popp 48 | WB B. Ritchie 20 | | | |

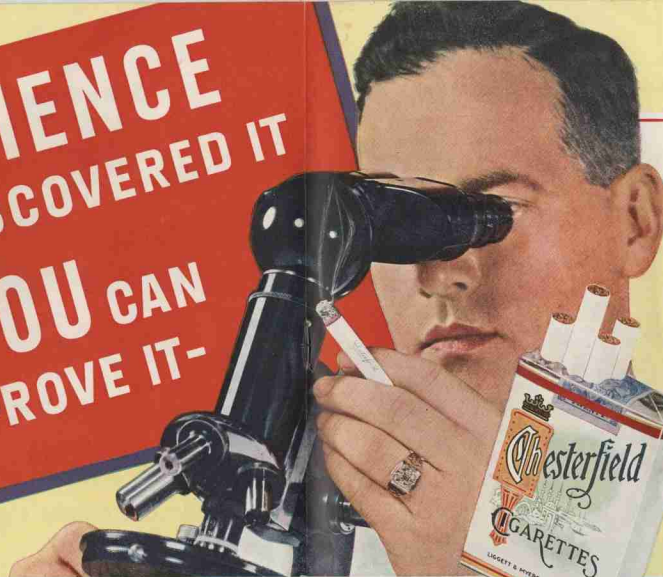
OFFICIALS FOR TODAY'S GAME

Referee: Charlie Moss, Clemson
 Umpire: Paul Dunham, Tulsa

**CATAWBA
 COLLEGE**

| | | | | | |
|----|-----------------|---|----|-------|-----|
| 18 | Roy Pickens | B | 21 | 5'8" | 160 |
| 19 | Dan Bowden | B | 18 | 5'10" | 155 |
| 20 | Robert Ritchie | B | 21 | 5'10" | 150 |
| 21 | Harland Lore | B | 19 | 5'10" | 162 |
| 22 | Mike Hoffer | B | 19 | 5'10" | 160 |
| 23 | Bobby Caldwell | B | 19 | 5'10" | 145 |
| 24 | Baker Hood | E | 18 | 6'1" | 175 |
| 25 | Paul Barnes | B | 19 | 5'10" | 155 |
| 26 | James Luciano | B | 20 | 5'10" | 164 |
| 28 | John Coble | B | 21 | 5'9" | 180 |
| 29 | Dwight Crater | E | 19 | 6'1" | 170 |
| 30 | Bob Linder | B | 24 | 5'10" | 170 |
| 31 | Terrell Hall | E | 18 | 6'1" | 175 |
| 32 | Bill Klutz | B | 20 | 5'10" | 180 |
| 33 | Harry Lahn | G | 19 | 5'11" | 190 |
| 34 | Bill Smith | G | 18 | 5'10" | 180 |
| 37 | Pete Lyerly | G | 20 | 5'10" | 165 |
| 38 | Gordan Search | G | 18 | 5'11" | 165 |
| 40 | Garry Hauer | G | 19 | 5'9" | 170 |
| 41 | John Powell | G | 19 | 5'11" | 175 |
| 42 | Elbert Holt | B | 19 | 6'1" | 170 |
| 44 | Bob Hamilton | E | 21 | 6'1" | 192 |
| 46 | Raymond Ritchie | T | 21 | 6'0" | 192 |
| 47 | Bill Stunfield | E | 21 | 6'0" | 191 |
| 48 | Joe Popp | B | 21 | 5'9" | 182 |
| 49 | Ronald Rigby | G | 21 | 5'11" | 190 |
| 50 | Howard Crane | B | 18 | 6'3" | 192 |
| 51 | Harvey Stratton | C | 19 | 6'0" | 180 |
| 52 | Bill England | C | 19 | 6'2" | 190 |
| 53 | Earl Henry | G | 21 | 6'0" | 190 |
| 54 | Bill Munsucker | E | 23 | 6'2" | 192 |
| 56 | Joe Oxandine | E | 21 | 6'1" | 190 |
| 57 | Herbert Rhodes | C | 18 | 5'10" | 180 |
| 58 | Gary Pruitt | T | 18 | 5'11" | 190 |
| 59 | Bill Peeler | G | 20 | 5'10" | 192 |
| 61 | George Fidler | T | 20 | 6'2" | 235 |
| 62 | Bob Lee | T | 26 | 5'9" | 228 |
| 63 | Tom Page | T | 25 | 6'4" | 220 |

**SCIENCE
 DISCOVERED IT
 YOU CAN
 PROVE IT-**



Head Linesman: Joe Sink, Duke
 Field Judge: Reid Staton, Wake Forest

**North Carolina
 State Squad**

| | | | | | |
|----|--------------------|---|----|-------|-----|
| 12 | Seehorn, '55 | B | 18 | 6' | 175 |
| 14 | Smith, '52 | B | 22 | 5'9" | 180 |
| 15 | McArthur, '52 | B | 24 | 6'1" | 180 |
| 16 | Mayer, '54 | B | 22 | 5'11" | 180 |
| 17 | Frauenhofer, '54 | B | 19 | 5'10" | 170 |
| 22 | Barringer, '55 | B | 18 | 6' | 190 |
| 23 | Barkowski, '53 | B | 22 | 6'1" | 205 |
| 24 | Wyles, '54 | B | 20 | 5'10" | 180 |
| 25 | Martini, '54 | B | 20 | 6'2" | 190 |
| 26 | Spritz, '53 | B | 22 | 6'2" | 200 |
| 29 | Kaiser, '52 | B | 23 | 5'11" | 183 |
| 27 | Kutney, '55 | B | 18 | 6' | 170 |
| 30 | O'Rourke, '52 | B | 23 | 6' | 180 |
| 31 | Swanger, '54 | B | 20 | 5'9" | 175 |
| 32 | Yeates, '53 | B | 22 | 6'1" | 210 |
| 33 | Sudo, '54 | B | 20 | 5'10" | 195 |
| 42 | Bathune, '54 | B | 19 | 5'10" | 170 |
| 43 | McCarter, '55 | B | 19 | 5'10" | 175 |
| 45 | O'Hara, '54 | B | 19 | 5'9" | 170 |
| 46 | Potts, '53 | B | 20 | 5'10" | 175 |
| 49 | Webster, '53 | B | 21 | 6'3" | 205 |
| 50 | Mueller, '54 | C | 19 | 6' | 200 |
| 53 | Vivino, '55 | C | 17 | 6' | 190 |
| 56 | Battaglia, '54 | C | 19 | 6' | 195 |
| 57 | Flemming, '52 | C | 23 | 6' | 155 |
| 58 | Pierce, '54 | C | 19 | 6'2" | 205 |
| 59 | Tefaulte, '52 | C | 23 | 6'2" | 210 |
| 60 | Nicholson, '53 | G | 22 | 6' | 195 |
| 61 | Cox, '53 | G | 21 | 5'10" | 185 |
| 62 | Walt, '55 | G | 18 | 6' | 200 |
| 63 | Masgoli, '55 | G | 18 | 6' | 190 |
| 64 | Schacht, '52 | G | 23 | 5'9" | 194 |
| 65 | Bogans, Vinco, '52 | G | 23 | 5'10" | 195 |
| 66 | Bogans, John, '55 | G | 19 | 5'10" | 188 |
| 67 | Pekarschick, '53 | G | 19 | 5'11" | 192 |
| 68 | Kennedy, '53 | G | 21 | 5'10" | 185 |
| 69 | Fredericks, '55 | G | 19 | 5'10" | 200 |
| 70 | Nixon, '54 | T | 20 | 5'11" | 210 |
| 71 | Hillman, '53 | T | 25 | 6'2" | 230 |
| 72 | Swart, '52 | T | 23 | 6'2" | 200 |
| 73 | Costo, '52 | T | 25 | 6'1" | 220 |
| 74 | Beaver, '52 | T | 23 | 6'2" | 195 |
| 75 | Northrup, '55 | T | 19 | 6' | 220 |
| 77 | Britt, '53 | T | 21 | 6'2" | 210 |
| 79 | Riden, '54 | T | 19 | 6' | 195 |
| 80 | Paroli, '55 | T | 19 | 6' | 230 |
| 81 | Holmwood, '55 | E | 17 | 6'1" | 190 |
| 82 | Jones, '54 | E | 19 | 6'3" | 195 |
| 83 | Smith, '54 | E | 20 | 5'11" | 175 |
| 84 | Butler, '53 | E | 21 | 6'1" | 180 |
| 85 | Hall, '55 | E | 19 | 6'2" | 185 |
| 86 | Kovilla, '53 | E | 22 | 6'1" | 185 |
| 87 | Allman, '52 | E | 23 | 6' | 193 |
| 88 | Sherpe, '52 | E | 22 | 6'2" | 188 |
| 89 | Thompson, '54 | E | 19 | 5'11" | 175 |
| 78 | Geisloff, '55 | E | 17 | 6'3" | 210 |

**"NO UNPLEASANT
 AFTER-TASTE"**
 WHEN YOU SMOKE
CHESTERFIELD

**MORE COLLEGE MEN AND WOMEN BUY
 CHESTERFIELD THAN ANY OTHER CIGARETTE**

Statistics of N. C. State Football Squad — 1951 Season

(Listed by Position)

| Jersey No. | Name | Wgt. | Hgt. | Age | Class | Hometown |
|-----------------------|-------------------|------|---------|-----|-----------|-----------------------|
| ENDS | | | | | | |
| 81 | Joe Holmwood | 196 | 6-1 | 17 | Fresh | Niagara Falls, N. Y. |
| 82 | Harold Jones | 195 | 6-3 | 19 | Sophomore | Charlotte, N. C. |
| 83 | Paul Smith | 175 | 5-11 | 20 | Sophomore | S. Charleston, W. Va. |
| 84 | *David Butler | 180 | 6-1 | 21 | Senior | Fayetteville, N. C. |
| 85 | George Hall | 185 | 6-1 | 19 | Junior | Belmont, N. C. |
| 86 | *Steve Kozlka | 185 | 6-1 | 22 | Junior | Tarrytown, N. Y. |
| 87 | *Bernie Altman | 193 | 6-2 | 23 | Senior | Parkersburg, W. Va. |
| 88 | Howell Sharpe | 188 | 6-2 | 22 | Senior | Cartersville, Ga. |
| 89 | Jack Thompson | 155 | 5-11 | 19 | Sophomore | Buffalo, N. Y. |
| 78 | Chris Geisloff | 210 | 6-3 | 17 | Fresh | LaGrangeville, N. Y. |
| TACKLES | | | | | | |
| 79 | Glenn Nixon | 210 | 5-11 | 20 | Sophomore | Buffalo, N. Y. |
| 71 | *Jim Hillman | 230 | 6-2 | 25 | Junior | Kane, Pa. |
| 72 | *James Swart | 220 | 6-1 | 23 | Senior | Wilmington, N. C. |
| 75 | *Elmer Costa | 220 | 6-1 | 23 | Senior | Paterson, N. J. |
| 74 | *Fred Beaver | 195 | 6-2 | 20 | Senior | Ashville, N. C. |
| 72 | Frank Northrup | 220 | 6-0 | 20 | Fresh | Winston-Salem, N. C. |
| 77 | *James C. Britt | 210 | 6-2 | 21 | Junior | Fayetteville, N. C. |
| 79 | Perry Sides | 195 | 6-0 | 19 | Sophomore | Lewistown, Pa. |
| 80 | Bob Paroli | 230 | 6-0 | 19 | Fresh | Toughkenzie, N. Y. |
| GUARDS | | | | | | |
| 60 | *John Nicholson | 195 | 6-0 | 22 | Junior | Raleigh, N. C. |
| 61 | *William Cox | 185 | 5-10 | 21 | Junior | Knoxville, Tenn. |
| 62 | Ed Davis | 200 | 6-0 | 18 | Fresh | Goldshoro, N. C. |
| 63 | Ed Maszaj | 190 | 5-9 | 18 | Fresh | Lackawanna, N. Y. |
| 64 | *Walter Schacht | 194 | 5-9 | 22 | Senior | Alexandria, Va. |
| 65 | *Vince Bagonis | 195 | 5-10 | 23 | Senior | Luzerne, Pa. |
| 66 | John Bagonis | 188 | 5-10 | 19 | Fresh | Luzerne, Pa. |
| 67 | Tom Pakarechick | 200 | 5-11 | 19 | Fresh | Signal, Ohio |
| 68 | *Bill Kennedy | 210 | 5-10 | 21 | Junior | Fayetteville, N. C. |
| 60 | Ronald Fredericks | 192 | 5-10 | 19 | Fresh | Paterson, N. J. |
| CENTERS | | | | | | |
| 50 | Ralph Mueller | 200 | 6-0 | 19 | Sophomore | Paterson, N. J. |
| 55 | David Vivino | 190 | 6-0 | 17 | Fresh | Paterson, N. J. |
| 56 | Fred Battaglia | 195 | 6-0 | 19 | Sophomore | Niagara Falls, N. Y. |
| 57 | Bob Fleming | 185 | 6-0 | 23 | Senior | Greenville, N. C. |
| 58 | Junior Pierce | 205 | 6-2 | 19 | Sophomore | Plymouth, N. C. |
| 59 | *Tom Tafante | 210 | 6-2 | 23 | Senior | Yorkville, Ohio |
| TAILBACKS | | | | | | |
| 42 | Dick Bethune | 170 | 5-10 | 18 | Sophomore | Clinton, N. C. |
| 43 | Hal McCarter | 175 | 5-10 | 19 | Fresh | Portsmouth, Va. |
| 44 | Paul O'Hara | 170 | 5-9 | 19 | Sophomore | Niagara Falls, N. Y. |
| 40 | *Ted Potts | 175 | 5-10 | 20 | Junior | Alexandria, Va. |
| 49 | *Alex Webster | 205 | 6-5 1/2 | 21 | Junior | Kearny, N. J. |
| 27 | John Kutney | 179 | 6-0 | 18 | Fresh | Wilkes-Barre, Pa. |
| WINGBACKS | | | | | | |
| 12 | Monte Seehorn | 175 | 6-0 | 18 | Fresh | Lenoir, N. C. |
| 14 | *Jimmy Smith | 188 | 5-9 | 22 | Senior | Kalamazoo, Pa. |
| 15 | *George McArthur | 188 | 6-1 | 24 | Senior | Miami, Fla. |
| 16 | Jim Moyer | 180 | 5-11 | 22 | Senior | Paterson, N. J. |
| 17 | Chris Frauenhofer | 170 | 5-10 | 19 | Sophomore | Irvington, N. J. |
| | Johnny Steele | 170 | 5-9 | 19 | Sophomore | Buffalo, N. Y. |
| | William Teer | 180 | 6-0 | 18 | Fresh | Indiana, Pa. |
| | | | | | | Hillsboro, N. C. |
| FULLBACKS | | | | | | |
| 30 | *Jim O'Rourke | 180 | 6-0 | 23 | Senior | Pittsburgh, Pa. |
| 31 | Tommy Swanger | 175 | 5-9 | 20 | Sophomore | Hamburg, N. Y. |
| 32 | *Harvey Ventles | 210 | 6-1 | 22 | Junior | Buffalo, N. Y. |
| 33 | George Suda | 195 | 6-0 | 20 | Sophomore | Wilkes-Barre, Pa. |
| | Gene Willard | 190 | 6-0 | 18 | Fresh | Buffalo, N. Y. |
| BLOCKING BACKS | | | | | | |
| 22 | Joe Barringer | 190 | 6-0 | 18 | Fresh | Midway Park, N. C. |
| 23 | *Ray Barkauskie | 205 | 6-1 | 22 | Junior | Kalamazoo, Pa. |
| 24 | Carl Wyles | 180 | 5-10 | 20 | Sophomore | Buffalo, N. Y. |
| 25 | Ralph Martini | 190 | 6-0 | 20 | Sophomore | Buffalo, N. Y. |
| 26 | Dick Spritz | 200 | 6-2 | 22 | Junior | Niagara Falls, N. Y. |
| 29 | *Vitus Kaiser | 185 | 5-11 | 25 | Senior | Clinton, Pa. |
| | | | | | | Erie, Pa. |

* Denotes lettermen.

PROBABLE STARTING LINE UP—STATE COLLEGE

| | | | | | | |
|------------------------|----------------------------|-------------------------|--------------------------|-------------------------|-----------------------|------------------------|
| RE Kozlka No. 86 | RT Costa No. 72 | RG Schacht No. 64 | C Tafante No. 59 | LE Bagonis No. 65 | LY Britt No. 77 | LE Altman No. 87 |
| | BB Barkauskie No. 22 | WB Smith No. 14 | FB O'Rourke No. 30 | TB Webster No. 49 | | |

Vital Statistics of N. C. State Football Squad 1951

In celebrating a one hundredth birthday, as Catawba College has been doing since last December, every event or series of events during the year must somehow reflect the stature of an institution so firmly rooted in the past and so strong in expectations for the future. It seems highly appropriate in this Centennial year for Catawba to open her football season with a great institution like North Carolina State College.

The years that have gone have been fruitful ones for Catawba, especially those since 1923, when the institution was moved to Salisbury. And its growth and development in the ten years of the presidency of Dr. A. R. Keppel have been truly phenomenal. From a school of fifteen buildings on nineteen acres of land in 1942, with a cost valuation of \$606,000, an endowment of \$390,000 and a total enrollment of 370, Dr. Keppel has brought Catawba to the high point of its one hundred years, with a plant of nineteen buildings on one hundred and ninety acres, with a total cost valuation of \$1,300,000, an endowment of \$706,000, and an enrollment of 650 students. And the movement continues onward. Planned for the immediate future are a new gymnasium, a new library building, and a new auditorium designed to seat 2,400.

Catawba's success in the field of athletics has kept pace with her physical and spiritual growth. Gordon

A. Kirkland, Director of Intercollegiate Athletics, retired as head coach of the Indians at the close of the season in 1948 after compiling one of the greatest all-time records in the small college circle. During the fifteen years of Kirkland's regime the Indians won 106 games, lost 32, and tied 8; won the North State Conference Championship 8 times; won the Tangerine Bowl Championship 2 times, and set a modern record by scoring in 87 straight games.

During the last three years of Coach Kirkland's regime, he was ably assisted by line coach Marion Richards, who has done an outstanding job in coaching the line and in setting up defenses. Assistant Coach Richards continues under Head Coach Robert Spangler as an invaluable member of the coaching staff.

Head Coach Robert Spangler, who took over upon the retirement of Coach Kirkland, has guided the Indians through two seasons. Although his first two teams have played .500 ball, last year's record was brightened considerably when Catawba rose to the occasion twice to play Southern Conference teams to a standstill, losing to North Carolina State College 7-6, and winning from Virginia Military Institute 14-13. This year's squad, with a host of returning lettermen bolstered by some promising veterans and freshmen, is expected to get back into the winning ways of Catawba teams of the past.

Meet Catawba's Head Coach and Athletic Director



ROBERT SPANGLER, Head Football Coach

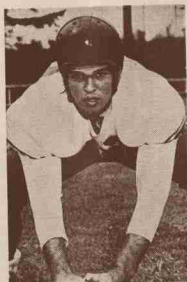


G. A. KIRKLAND, Athletic Director

CATAWBA INDIANS



BOB RITCHIE, Back



ELBERT HOLT, Center



BOB LEE, Tackle

Open Until

Twelve Tonight

BILL WALKER'S

*Village
Restaurant*

Cameron Village :: RALEIGH



BOB HAMILTON, End

CATAWBA INDIANS



BILL STANFIELD, End



JOE OXENDINE, End

MOTION PICTURES

And Projectors

For Every Purpose

- ★ CHURCH
- ★ SCHOOL
- ★ CLUB
- ★ INDUSTRY
- ★ HOME
- ★ RECREATIONAL CENTERS

NATIONAL FILM SERVICE

RALEIGH — — RICHMOND — — LOUISVILLE

For More Than 85 Years

Headquarters for

- OFFICE SUPPLIES
- OFFICE EQUIPMENT
- BUSINESS MACHINES
- BOOKS OF ALL KINDS
- SOCIAL ENGRAVING



ESTABLISHED 1867

Alfred Williams & Co.

119 Fayetteville St. — Raleigh



HOWARD CRANE, End



JOHN COBLE, Tail Back



BILLY HUNSUCKER, End

CATAWBA INDIANS



BILL ENGLAND, Guard



RAYMOND RITCHIE, Tackle



JOE POPP, Back



*Jeans
of Raleigh*

college and career

fashions

*fall
1951*

CATAWBA



RONALD RIGBY, Guard



GEORGE FIDLER, Tackle

INDIANS



BOB LINDER, Back

The "fresh Up" family drink!



MOBLEY'S

"RALEIGH'S ART CENTER"

113 S. Salisbury St.

"the most complete stock
ART MATERIALS—THEATRICAL MAKE-UP
in the entire South"

North Carolina State College Football History

| Year | Won | Lost | Tied | Scored | Opponents | Coaches | Year | Won | Lost | Tied | Scored | Opponents | Coaches |
|------|-----|------|---------|------------|-----------|-------------------|------|-----|------|-------|--------|-----------|------------------|
| 1899 | 1 | 2 | 3 | 29 | 35 | | 1925 | 4 | 6 | 0 | 62 | 102 | Gus Tebell |
| 1900 | 4 | 5 | 0 | 86 (Incl.) | 79 | Mr. John McKee | 1927 | 9 | 1 | 0 | 216 | 69 | Gus Tebell |
| 1901 | 3 | 1 | (Incl.) | 65 | 36 | Dr. John McKee | 1928 | 4 | 5 | 1 | 157 | 100 | Gus Tebell |
| 1902 | 3 | 4 | 2 | 83 | 49 | Arthur Devlin | 1929 | 1 | 8 | 0 | 44 | 207 | Gus Tebell |
| 1903 | 4 | 4 | 0 | 142 | 68 | Arthur Devlin | 1930 | 2 | 8 | 0 | 59 | 123 | John Van Liew |
| 1904 | 3 | 1 | 2 | 99 | 11 | W. S. Keniholtz | 1931 | 3 | 6 | 0 | 59 | 105 | Clipper Smith |
| 1905 | 4 | 1 | 1 | 65 | 10 | Geo. S. Whitney | 1932 | 6 | 1 | 2 | 97 | 29 | Clipper Smith |
| 1906 | 3 | 1 | 4 | 104 | 10 | Willie Heston | 1933 | 1 | 5 | 3 | 23 | 60 | Clipper Smith |
| 1907 | 6 | 0 | 1 | 81 | 19 | Mickey Whitehurst | 1934 | 2 | 6 | 1 | 38 | 98 | Hunk Anderson |
| 1908 | 5 | 1 | 0 | 157 | 11 | Mickey Whitehurst | 1935 | 6 | 4 | 0 | 116 | 47 | Hunk Anderson |
| 1909 | 6 | 1 | 0 | 110 | 24 | Eddie L. Green | 1936 | 3 | 7 | 0 | 76 | 77 | Hunk Anderson |
| 1910 | 4 | 0 | 2 | 115 | 12 | Eddie L. Green | 1937 | 5 | 3 | 1 | 91 | 92 | Doc Newton |
| 1911 | 5 | 3 | 0 | 84 | 34 | Eddie L. Green | 1938 | 3 | 7 | 1 | 59 | 100 | Doc Newton |
| 1912 | 4 | 3 | 0 | 63 | 104 | Eddie L. Green | 1939 | 2 | 8 | 0 | 49 | 191 | Doc Newton |
| 1913 | 6 | 1 | 0 | 155 | 27 | Eddie L. Green | 1940 | 3 | 6 | 0 | 120 | 161 | Doc Newton |
| 1914 | 3 | 3 | 1 | 119 | 53 | Jack Hegarty | 1941 | 4 | 5 | 2 | 122 | 143 | Doc Newton |
| 1915 | 2 | 3 | 1 | 44 | 107 | Jack Hegarty | 1942 | 4 | 4 | 2 | 69 | 142 | Doc Newton |
| 1916 | 2 | 5 | 0 | 26 | 191 | Britt Patterson | 1943 | 3 | 6 | 0 | 78 | 229 | Doc Newton |
| 1917 | 6 | 2 | 1 | 112 | 70 | Harry Hartsell | 1944 | 7 | 2 | 0 | 183 | 63 | Beattie Feathers |
| 1918 | 1 | 4 | 0 | 54 | 181 | Tal Stafford | 1945 | 3 | 6 | 0 | 131 | 144 | Beattie Feathers |
| 1919 | 7 | 2 | 0 | 351 | 75 | Bill Fetser | 1946 | 8 | 2 | 0 | 215 | 67 | Beattie Feathers |
| 1920 | 7 | 3 | 0 | 284 | 112 | Bill Fetser | 1947 | 5 | 3 | 1 | 92 | 57 | Beattie Feathers |
| 1921 | 3 | 3 | 3 | 61 | 98 | Harry Hartsell | 1948 | 3 | 6 | 1 | 107 | 128 | Beattie Feathers |
| 1922 | 4 | 6 | 0 | 101 | 92 | Harry Hartsell | 1949 | 3 | 7 | 0 | 134 | 192 | Beattie Feathers |
| 1923 | 3 | 7 | 0 | 56 | 154 | Harry Hartsell | 1950 | 5 | 4 | 1 | 92 | 119 | Beattie Feathers |
| 1924 | 2 | 5 | 3 | 43 | 137 | Buck Shaw | | | | | | | |
| 1925 | 3 | 5 | 1 | 51 | 73 | Gus Tebell | | | | | | | |
| | | | | | | | 203 | 202 | 41 | 5,179 | 4,588 | | |

CATAWBA INDIANS



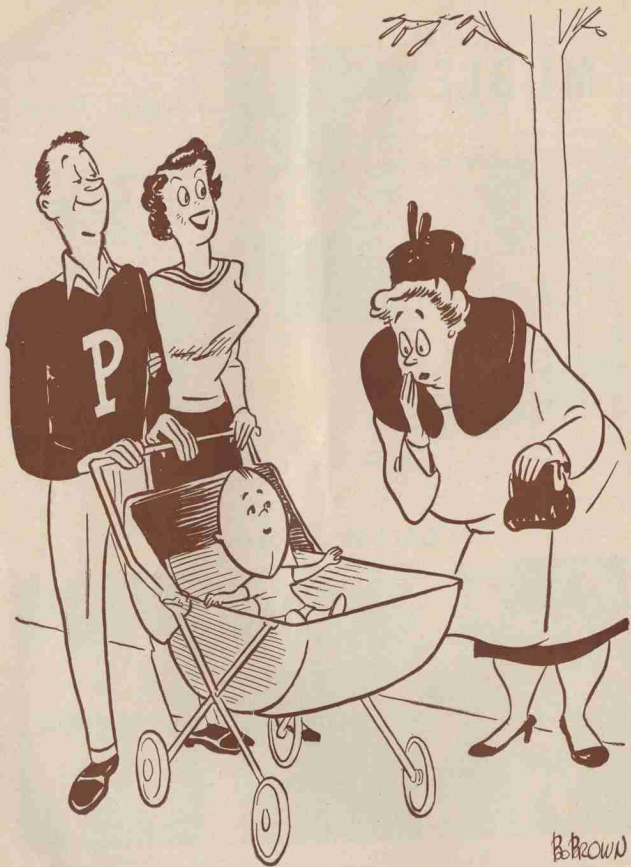
M. M. RICHARDS, Line Coach



EARL RUTH, End Coach



EARL HENRY, Center



"When Jack was at Purdue, he ate, drank and slept football!"

Our Specialties



← MILD

Hot →



Jones' 
SAUSAGE COMPANY

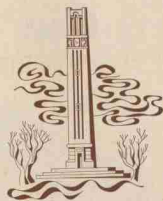


RALEIGH, N. C. — GREENSBORO, N. C. — DANVILLE, VA.

N.C. STATE



HILLMAN, Jim—6-3, 240 pounds. Junior, Kane, Pa. Biggest of the tackle veterans, Jim will be counted on strongly this season. Lettered as sophomore and showed plenty of savvy. Hits hard and is best as defensive lineman. Likely will specialize on defense this year, although he can play offensive football. Certain to see plenty of action. Lettered four years at Kane High, also in track and basketball two years. Navy veteran. Studying Rural and Industrial Recreation. 26-years old.



NORTH CAROLINA STATE COLLEGE Varsity Basketball Schedule 1951-52 Season

Head Coach, Everett Case Assistants, Carl Anderson, Vic Bubas

Sat. Dec. 1—Furman University at Raleigh, N. C.*

Tues. Dec. 4—Davidson College at Davidson, N. C.*

Thurs. Dec. 8—Wake Forest College away (site to be decided later)*

December 9-13—Term Examinations

Thur. Dec. 13—Texas Tech at Raleigh, N. C.

Sat. Dec. 15—Eastern Kentucky at Raleigh, N. C.

Tues. Dec. 18—George Washington at Uline Arena, Washington,

D. C.*

Thurs. Dec. 20—Manhattan at Madison Square Garden, New York

City

December 27-28-29—Dixie Basketball Classic (Duke, Carolina,

Wake Forest, N. C. State, Southern California, Cornell

Columbia, Navy—Third annual)

Wed. Jan. 2—Fordham University at Raleigh, N. C.

Sat. Jan. 5—Duke University at Durham, N. C.*

Tue. Jan. 8—South Carolina at Charlotte, N. C. (Armory)*

Sat. Jan. 12—William and Mary at Raleigh, N. C.*

Tue. Jan. 15—University of Louisville at Raleigh, N. C.

Sat. Jan. 19—Villanova at the Palestra, Philadelphia, Pa.

Tue. Jan. 22—Loyola of Baltimore, Md. at Raleigh, N. C.

Sat. Jan. 26—University of North Carolina at Chapel Hill, N. C.*

Tue. Jan. 29—Bowling Green (Ohio) at Raleigh, N. C.

Sat. Feb. 2—Villanova College at Raleigh, N. C.

Mon. Feb. 4—University of Pittsburgh at Raleigh, N. C.

Tue. Feb. 5—William and Mary at Norfolk, Va. (Armory)*

Sat. Feb. 9—Davidson College at Raleigh, N. C.*

Tue. Feb. 12—Duke University at Raleigh, N. C.*

Sat. Feb. 16—George Washington University at Raleigh, N. C.*

Tue. Feb. 19—University of Louisville at Louisville, Ky.

Sat. Feb. 23—University of North Carolina at Raleigh, N. C.*

Tue. Feb. 26—Wake Forest College at Raleigh, N. C.*

Sat. Mar. 1—University of Cincinnati at Raleigh, N. C.

March 6-7-8—Southern Conference Tournament

March 15—Open Date

March 21-22—NCAA Regional Playoffs, Eastern Section, at Ra-

leigh, N. C.

* Denotes Southern Conference games.



Compliments

of

K & W MOTORS, Inc.



— **This Time It's HUDSON** —



118 E. DAVIE ST.

DIAL 2-4963

REAL ESTATE—MORTGAGE LOANS

FIRE INSURANCE



For

"EXPERIENCED SERVICE"

SEE

**CONNELL REALTY &
MORTGAGE CO.**

309 Odd Fellows Bldg.

Raleigh, N. C.

Dial 2-3927

Best Wishes for a Successful Season

COMPLIMENTS OF

BROGDEN PRODUCE — Pabst Blue Ribbon Beer

HARRIS WHOLESALE — Budweiser Beer
Red Top Ale

SIMMONS, J. W. — Arrow and Blatz Beer

WAKE WHOLESALE — Schlitz

WEBSTER DISTRIBUTORS — Millers High Life

RALEIGH, N. C.

CANTON CAFE

Serves You the Finest Chinese-American
Food

408 Hillsboro St.

Phone 7867

Moore & Johnson Co.

"For 27 Years Raleigh's Leading
Insurance Agency"

BILL WARD, '40

8th Floor Insurance Bldg.

Raleigh, N. C.

DAVIDSON & JONES

General Contractors



Raleigh Building & Loan Bldg.

RALEIGH

Phone 2-3437

OTHER SPORTS AT STATE COLLEGE

BASKETBALL



For the past five years North Carolina State's basketball squad coached by Everett Case and Carl Anderson have topped the Southern Conference, winning both the regular season and the conference tournament. Coach Case's remarkable record of 137 victories against only 29 defeats ranks as one of the best coaching records in the nation.

During each of Case's five seasons at State the Wolfpack has participated in a major tournament. Three times the squad has been invited to the National Invitational and twice has earned berths in the National Collegiate Athletic Association.

Two All-Americans have been produced at State under Coach Case. Forward Dick Dickey was named to the top teams in 1948 and 1950, while Forward Sam Ranzino earned the honor in both 1950 and 1951.

No less than seven All-Southerns have been named at State. Besides Ranzino and Dickey the stars include Center Pete Negley and Leo Katkaveck in 1947, Eddie Bartels and Leo Katkaveck in 1948, Vic Bubas in 1949.

During each of Case's five years at State the Wolfpack has been a contender for national scoring honors. In 1948 the team lost the national title by three-tenths of a percentage point to Rhode Island State and last season by only one-tenth of a percentage point to the University of Cincinnati.

Prospects for the coming season are very good. Eight lettermen including Forwards Bobby Speight, Paul Brandenburg, Bill Kukoy and Bob Cook, Center Bobby Goss and Guards Lee Terrill, Bernie Yurin and Eddie Morris will return. Other top prospects include several sophomores, Forwards Kim Buchanan and Dick Tyler, Guards Bobby Adams and Herb Applebaum, and several freshmen.

WRESTLING



Coach Al Crawford's N. C. State wrestling squads have been among the best in the Southern Conference for the past five seasons and the sport has prospered, attracting more spectators than ever before.

Last year the Wolfpack grapplers enjoyed one of their finest seasons, winning seven of 10 matches and

(Continued on Page 60)

NORTH CAROLINA STATE PLAYERS



STEELE, John—5-10, 175 pounds. Sophomore, Indiana, Pa. Johnny quarterbacked the State freshmen under the split-T formation last year and turned in an excellent job. Because of his speed, however, he'll move to wingback in the single-wing, but can still be used as passer. Will need experience at new position, but is highly-regarded. Cool-headed under fire. Studying Civil Engineering. 18-years old.



***SWART, William**—6-2, 220 pounds. Senior, Wilmington, N. C. Turned in some top performances last season and is key man in plans for '51. Has speed and weight to stand tough grind in forward wall and is improving steadily. Blocks very well on offense and probably will specialize on offense this year. Prepped at New Hanover High winning letters in 1945-46. Studying Horticulture. 23-years old.



***BEAVER, Fred**—6-2½, 210 pounds. Senior, Asheville, N. C. Powerfully built and a hard-bitter on defense, Beaver has improved consistently during his three previous seasons with the Wolfpack. Last season he saw plenty of action and will be counted on strongly again in '51. Good blocker and tackler. All-State in high school and played in Shrine Bowl game at Charlotte. Studying Textiles. 22-years old.

CAROLINA BUILDERS CO.

B. B. Benson, Pres.
C. L. Benson, Treas.

Ralph L. Moore, V-Pres.
J. Y. Hornbuckle, Secy.

- | | |
|----------------------|----------------|
| ● COAL | ● LUMBER |
| ● WATERPROOFING | ● ATHEYS PAINT |
| ● BUILDING MATERIALS | ● MILLWORK |

RUSSWIN HARDWARE

217 N. Dawson St., Phone 7563

Raleigh, N. C.

Dependable Service—



RELIABLE COMPANIES

Auto — Fire — Casualty — Bonds

Dial 3-3615

SEARS
Insurance Agency

Security Bank Building



Compliments

TIRE SALES & SERVICE
Company

Your

Goodyear and Hotpoint
Dealer in Raleigh



(Continued from Page 58)

chalking up triumphs over North Carolina, Duke, Davidson, The Citadel, Virginia Tech, and West Virginia and losing to Virginia Military and Camp LeJeune Marines twice.

In the annual Southern Conference tournament the Wolfpack has done well each year. In 1947 and 1948 State finished second in the team scoring and has copped individual titles in the 155-pound, 175-pound and heavyweight divisions.

Last season the State grapplers appeared in the William Neal Reynolds Coliseum on several occasions following basketball contests and several thousand persons remained after the Wolfpack cage contests to witness the wrestling matches. The sport attracted more spectators last season than for any other previous year of its existence on the campus and many fans were converted to collegiate wrestling.



BASEBALL AT N. C. STATE

Since Coach Vic Sorrell took over the reins of the Wolfpack baseball squad in 1946 the State squads have been among the best in the Big Four and Southern Conference. In the compact Big Four of Duke, Carolina, Wake Forest and State, the Wolfpack has never finished below second place and in conference competition State has always been among the top six teams in the 17-school circuit.

Last year, despite a sophomore dominated squad, State finished in a tie for second in the Big Four. Prospects for the 1952 season are among the best ever at the college and Coach Sorrell is expected once again to be a contender for the Big Four title.

Among the stars returning are Eddie Morris, first base, Roland Brinson, second base, Johnny Yvars, shortstop, Ed Horbelt, leftfield, John Fuscoe, All-Southern outfielder and Pitchers Footsie Gardner, Lunsford Lewis, Bernie Bean and others.



SWIMMING AT N. C. STATE

One of the finest records in any sport has been compiled at State by Coach Willis Casey's Wolfpack swimmers. Since Casey took over the coaching reins in 1947 the team has won 64 meets and lost only seven, including both freshmen and varsity competition.

In '47 the team won all nine dual meets, copped the North and South Carolina A.A.U. championships and placed two members of the squad, Bill Kelly and Bill Ward on the All-America Intercollegiate team.

(Continued on Page 62)



For Your Sake! For Health's Sake! For Goodness Sake!

Taste, compare and you will decide to always be sure it's

THE DRIVE-IN GRILL

—Raleigh's First for the Best of Everything—

110 Paved Car Parking Spaces

Open 11:45 A.M. 'til Midnight

Louisburg Road



FLOWERS BY—

FALLON'S

—ARE DISTINCTIVE



Phone 8347

205 FAYETTEVILLE STREET

Perfect Protection Pays



**OCCIDENTAL LIFE
INSURANCE CO.**



HOME OFFICE

RALEIGH, NORTH CAROLINA

(Continued from Page 60)

In '48 the Wolfpack mermen won seven and lost two and were runners-up for the Southern Conference title. The freshman squad was undefeated.

In '49 the State swimmers won nine straight meets without a loss and were co-champions of the Southern Conference. The freshmen were again undefeated.

In '50 the team copped seven of 10 meets and finished third in the Southern Conference. Two members were conference champions and one later became national junior champ.

During the past season State won seven of nine meets and tied for the Southeastern United States team championship. Freshmen were undefeated and were rated as the finest team in the history of the college.

Prospect for the 1952 year are better than ever. Such standouts as Bob Mattson of Worcester, Mass., who finished fifth in the National A.A.U. and won the North and South Carolina A.A.U., Donald Sonia, Paul Arata, Craig Lynes and several others indicate that the Wolfpack tankers will again field one of the strongest outfits in the Southern Conference.

CROSS COUNTRY



Coach Tom Fitzgibbons has turned out some of the finest runners in the history of State College during his two year tenure here. Last season State finished second in the Southern Conference championships and Clyde Garrison of High Point, a sophomore, won the individual cross country championship,

setting a new record. Garrison also holds the Southern Conference Indoor and Outdoor Two-Mile championships in track.

Prospects for 1951 are very fine. Along with Garrison are such top runners as William "Buzz" Sawyer, Virginia A.A.U. mile champion, Joe Shockley, Eddie Beal, Captain Bobby Leonard, Darrel Winslow, John Smith, Dewey Adams, John Smith and Bill Macredy.

TENNIS AT N. C. STATE



Coach Jack Kenfield, Jr. will have to mould a completely new State tennis squad during the 1952 season. Bill Regan, last year's number one man has graduated along with John Skeen, another fine competitor from last season. However, Kenfield has some good prospects up from the 1951 freshman outfit and State is certain to be a contender.

Kenfield, son of John Kenfield, long-time tennis coach at the University of North Carolina, is one of the coming tennis mentors in the South and will do a good job for the Wolfpack court clubs in the future.

(Continued on Page 64)

BEST WISHES TO THE WOLFPACK

SANDERS

MOTOR COMPANY

CARS

TRUCKS

TRACTORS

IMPLEMENTS

GENUINE PARTS

USED CARS AND TRUCKS

BAKED ENAMEL PAINT SHOP

AUTHORIZED FACTORY SERVICE

MODERN BODY AND TRIM SHOP

AGENTS FOR ENGLISH-MADE FORD CARS AND TRUCKS



YOUR FRIENDLY FORD DEALER IN

RALEIGH, N. C.

(Continued from Page 62)

After the Game Meet at the

MANHATTAN RESTAURANT

CHOICE STEAKS — CHOPS

Hillsboro St.

Phone 9124

— IN BUSINESS FOR 25 YEARS —

HENRY HONEYCUTT'S



SERVICENTER
SPECIAL SERVICES

Wilmington and South Streets

Phone 5628



GOLF AT N. C. STATE

N. C. State's 1952 golf team will be built around tall Morris Brackett, a junior from Charlotte, N. C., who recently won the Raleigh City Golf Championship beating out Tommy Mills 1 up on the 38th hole over the Raleigh Golf Association course.

Brackett, who won the medalist trophy in the city tourney with a 67, is one of the finest young golfers in North Carolina. He is consistently a par-breaker and is deadly from the fairways with his accurate iron shots.

Brackett will be the key man on State's 1952 squad, which has been depleted seriously by graduation. One other letterman will return with Brackett. He's Bobby Holt of Greensboro, a 75-shooter, who is capable of holding his own with some of the best collegiate linksmen in the South.



NORTH CAROLINA STATE PLAYERS



***TOFAUTE, Tom**—6-2, 215 pounds. Senior, Yorkville, Ohio. Veteran at the pivot, Tofaute has three years of experience behind him with two letters. One of the best defensive line backers ever to play center at State, Tom is the top man at his position for the Wolfpack this year. Should be leading candidate for All-Southern providing injuries do not hamper his play. Can hold his own with the best in the conference. Earned four high school letters at center at Yorkville High, Marine Corps veteran. Studying Industrial and Rural Recreation. 22-years old.



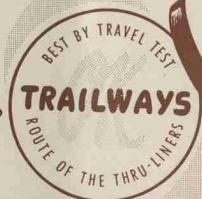
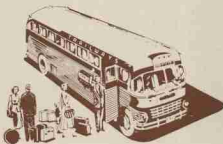
SWANGER, Thomas—5-9, 184 pounds. Sophomore, Hamburg, N. Y. Fastest man in the backfield is the title easily earned by Swanger. He does the 100-yard dash in 9.9 seconds and can really scree. Ran 90 yards to beat Carolina freshman 6-0 last year and is one of the most promising wing-backs on team. Might work up to starting role by mid-season. New York State 44-yard dash champion in high school. All-City (Buffalo, N. Y.) in 1949. Studying Rural and Industrial Recreation. 19-years old.



***BARKOUSKIE, Ray**—6-1, 195 pounds. Junior, Kulpmont, Pa. A leading candidate for the Jacobs Blocking Trophy in '51, Ray is one of the best blockers ever developed at State. He jukes plenty of power on offense and is a top line backer on defense. A hard-worker, Ray loves the game. His brother earned All-America honors at guard for the University of Pittsburgh. One of the most improved men on current team and will be a thorn in opponents side. Studying Industrial Arts Education. 20-years old. Extra point specialist, booted nine of 12 tries last season.

Carolina **TRAILWAYS** EARNS

NORTH CAROLINA'S STAMP OF APPROVAL



Carolina **TRAILWAYS**

Herring Sash & Door Co., Inc.

LUMBER

BUILDING MATERIALS



Stock Millwork and Complete
Woodworking Shop



DIAL 5880

P. O. BOX 1174



When In Need of

● **Tires** ● **Batteries**

● **Recapping**

Call

Tire Distributors, Inc.

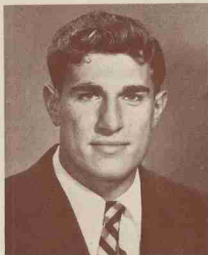
3811 Hillsboro St.

Phone 7545

John Ludwick



NORTH CAROLINA STATE PLAYERS



FREDERICK, Ronald—5-10, 193 pounds. Freshman. Paterson, N. J. Outstanding freshman candidate who may see some varsity action. Started three years at Paterson (Central) High and St. Benedict's Preparatory. Selected All-Conference. All-Essex County. All-State. 18-years old. Good competitor. Studying Rural and Industrial Recreation.



BUTLER, David—6-1, 180 pounds. Junior. Fayetteville, N. C. One of team's best offensive stars and great pass receiver. Likes it rough and tough and is used frequently on defense. Selected both All-State and All-Conference as prep schooler. Son of Mr. and Mrs. E. H. Butler, 216 Windsor Drive, Fayetteville. Studying Textiles. Likely to be one of team's top ends this season.



COX, William—5-11, 180 pounds. Junior. Knoxville, Tenn. Earned monogram as sophomore last year and probably will be one of key men in Wolfpack plans this season. Has speed to burn on offense and can hit hard. Standout star at Knoxville High for four years. 22-years old. Studying Textiles. Might earn starting job before season is over.

Raleigh Sea Food Company

★ ★ ★ ★

The Finest Seafood in Season — Fresh Daily

★ ★ ★ ★

CORNER DAVIE and EAST STREETS

GRIMES CAFE

Across from College Near Stadium

★ ★

Good Food—Fair Prices

★ ★

LET'S GO TEAM

Compliments of

Stockton, White & Co.

SECURITY BANK BLDG.

RALEIGH, N. C.

Mortgage Loans — Real Estate — Fire Insurance

Phone 3-4621



Erie City Boilers

Lane Sawmills

Tower Edgers and Trimmers

Crescent Woodworking
Machinery



DILLON SUPPLY COMPANY

Raleigh Durham Rocky Mount Goldsboro

● LUNCH

● BRUNCH

● SUPPER

THICK MILKSHAKES 20c

AT

A LITTLE MOORE

OPPOSITE TOWER

Regular Meals from

11:30 a.m.—2:30 p.m. 5:30 p.m.—8:30 p.m.

ROBERT VERNON

Incorporated

Phone 3-6481

112 W. Davie St.

Raleigh, North Carolina

YOUR KAISER-FRAZER DEALER

"N. C.'s Leading Produce Dealers"

Honeycutt Fruit and Produce Company

Raleigh, N. C.

Phone 5817

NORTH CAROLINA STATE PLAYERS



BETHUNE, Richard — 5-11, 170 pounds. Sophomore. Clinton, N. C. Showed promise as freshman last year, particularly good passer. May be used in spots in '51 and can develop with more experience. Is fast, but lacks size for rugged grind. Standout high school star, selected All-Conference two seasons. Studying Textiles. 20-year old.



O'HARA, Paul—5-8, 168 pounds. Sophomore. Niagara Falls, N. Y. One of the toughest little ball players on squad, O'Hara will come along with experience. Looked good in spring practice game and is definite running threat. Standout high school star, earning four letters. 19-years old. Studying Civil Engineering. Excellent student.



NIXON, Glenn—210, 5-11, 20 years old. Buffalo, N. Y. One of the most promising sophomores on the squad, Nixon will see plenty of action at tackle this season. In pre-season drills he has developed rapidly and has good future. Likely will be used chiefly on defense in early games. Studying Rural and Industrial Recreation.

Meet the crowd at

POWELL & GRIFFIS

after the game

★ ★

Groceries — Meats — Candy
Cigarettes

★ ★

We Deliver

★ ★

2414 Hillsboro
1700 Glenwood Ave.

Tel. 2-2847
Tel. 7561

Barnette's Esso Service

• • •

"Happy Motoring"

434 Fayetteville St.

Raleigh, N. C.

Compliments of

Colonial Pines Hotel

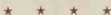
"WHERE THE QUIET MURMUR OF THE
PINES RELAXES YOU"

Phone 3-5551

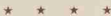
FINCH'S



The Newest, Most Modern Drive In



Air Conditioned Dining Room



HOURS: 11 A.M. — 12 MIDNIGHT

NORTH CAROLINA STATE PLAYERS



KENNEDY, Bill—5-10, 195-pounds. Junior. Fayetteville, N. C. Earned letter as sophomore and will be counted on a chief relief performer in '51. Has good aggressive spirit. All-State high schooler. Studying Civil Engineering. 20-years old.



SMITH, Paul—5-11, 190 pounds. Sophomore. South Charleston, W. Va. Rugged defensive performer on frosh team last year and certain to play in '51. Outstanding high school athlete, three-sport letterman. Can play both offense and defense and only needs experience to become standout. Studying Textiles. 19-years old.



PAROLI, Bob—6-2, 230 pounds. Freshman. Poughkeepsie, N. Y. Definitely has a chance of seeing action at tackle this season. Has been particularly aggressive on defense and is learning fast. Has size and weight to become great ball-player and needs only experience to become standout.

RIDDICK STADIUM

Riddick Stadium, present site of North Carolina State's home football contests, was started in 1907 as an athletic field and the first football contest was played on September 30, 1907 between State and Randolph-Macon.

In 1912 the stadium received its present name when the senior class voted to name the field in honor of Professor W. C. Riddick, who is regarded as the father of athletics at North Carolina State.

Construction of the concrete stands on the west side was begun in the summer of 1916 and during that year football contests were held at Raleigh with Davidson and Wake Forest.

In 1928 the stadium was enlarged and the east stands were completed. The field house and present

lighting system were completed during the 1938-39 seasons.

Many changes have taken place in the physical field as it now exists. Once it was level with surrounding ground, but grading and new construction has lowered the present field until it is approximately eight to ten feet below the level of the surrounding earth.

During recent years the large crowds attending contests in Riddick Stadium have forced athletic officials to increase the seating capacity by adding extra bleachers at both ends of the playing field. The structure, which once could care for only 5,000 persons in 1916 can now accommodate a gathering of about 20,000 people.



Dollar for Dollar-
you can't beat a

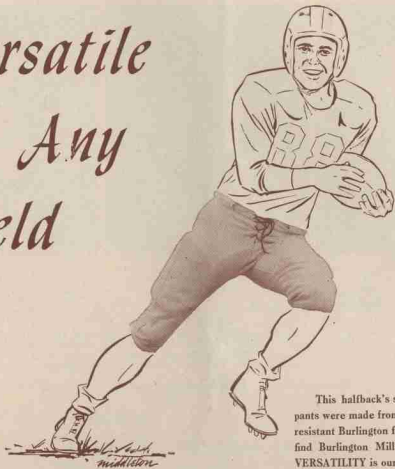
PONTIAC

Phone 2-3766

CONN-GOWER PONTIAC CO.

Raleigh, N. C.

Versatile In Any Field



This halfback's sleek and beautiful pants were made from a tough and wear-resistant Burlington fabric. Surprised to find Burlington Mills on the gridiron? VERSATILITY is our middle name. Our famous Bur-Mil fabrics can be found in Sister's frothy evening gown, Dad's crisp summer suit, Junior's sporty slacks and shirt, Mom's slips and nightgown — or the lovely drapes in the parlor. It's a fact that quality Bur-Mil fabrics are truly "Woven Into the Life of America."

Burlington Mills

"Woven into the Life of America"



EXECUTIVE OFFICES: GREENSBORO, N. C.

MAKER OF WOMEN'S OUTERWEAR AND UNDERWEAR FABRICS • MEN'S WEAR FABRICS • DECORATIVE FABRICS
HOSIERY FOR MEN AND WOMEN • COTTON PIECE GOODS AND YARNS
RIBBONS • INDUSTRIAL AND TRANSPORTATION FABRICS

NORTH CAROLINA STATE PLAYERS



BAGONIS, John—5-11, 190 pounds. Freshman, Luzerne, Pa. Younger brother of Vince, and following in his footsteps as a guard for the Wolfpack. Has great deal of promise and probably will be among the few freshmen candidates to see action this season. Plenty of speed and is good blocker. Captain of prep school team. Studying Rural and Industrial Recreation. 18-years old.



McCARTER, Hal—5-9, 165 pounds. Freshman, Portsmouth, Va. Another frosh candidate who'll need experience before real value to team can be judged. Is accomplished kicker and passer and was fine high school player. Named All-City (Portsmouth, Va.) and selected Most Valuable Player on squad. Will develop as season progresses and is definitely fine prospect. Studying Textiles. 19-years old.



MacARTHUR, George—6-0, 180 pounds. Senior, Paterson, N. J. One of the team's best pass defense men and likely will be used exclusively as defensive halfback, although is good pass receiver and knows offensive system well. Earned three previous letters with Wolfpack and is valuable man. Attended Eastside High, Paterson, N. J. Studying Rural and Industrial Recreation. 23-years old.

SERVING THE SOUTH SINCE 1875

Rhodes
FURNITURE

We always take pride in being able to offer tasteful, distinctive furniture . . . furniture that was designed to conform to the fashion of both today and tomorrow at prices well within the reach of all home lovers.

Wilmington Street at Martin

Phones 3-5541 and 3-5542

RALEIGH, N. C.

All Forms Juvenile and Adult

LIFE INSURANCE

★ ★

The FRED DIXON AGENCY

OF

Atlantic Life Insurance Co.

★ ★

REPRESENTATIVES

Joe Winston
John Royster
John Burke O'Donnell
Aaron Lowery
Fred Dixon
Everette Stout

George Davis
Ray Wood
Romeo Lefort
Sam Owen
John Murph

★ ★

Cameron Village

RALEIGH, N. C.

"Honestly, It's the Best Policy"

Learn Beauty Culture

Course Complete—All Materials Included

\$100

All Beauty Work Done at Cost

CAROLINA COLLEGE OF BEAUTY CULTURE

Phone 2-4847 — Manager "Red" Purcell
202½ South Salisbury St. Raleigh

- Auto Loans
- Financing
- Refinancing

FREE PARKING

AUTO FINANCE CO.

"A Home Company For Home Folks"
424 S. McDowell St. Phone 2-2813

JAMES E. THIEM

"Everything for the Office"

Desks—Chairs—Filing Cabinets

Sheet Music—Recordings

DIAL 2-2913

108 FAYETTEVILLE ST.

Raleigh, N. C.

HILLS, Inc.

SPORTING GOODS

Hunting and Fishing Headquarters

Bicycle Sales and Service

105 S. Wilmington

Phone 8172

CALDWELL SALES AND SERVICE

218 S. Dawson St.

Phone 3-5701

RALEIGH, N. C.

Distributors for Pennsylvania Tires & Tubes
Cold Rubber Recapping or Full Capping

— Prompt Road Service —

Chrysler Airtemp

Heating and Air Conditioning

Nicholson

Raleigh

Durham

NORTH CAROLINA STATE PLAYERS



***BRITT, J. C.**—6-3, 200 pounds. Junior, Fayetteville, N. C. Brilliant as a guard last year. Britt has been converted to tackle, but may play either position, depending on the situation. Named Associated Press "Sophomore of the Week" for brilliant line play against Wake Forest last season. Rough and aggressive, Britt is one of the standouts in the State forward wall. Certain to be key man. Named All-Southern and All-State in high school. Studying Textiles.



***KAISER, Vitas**—6-11, 185 pounds. Senior, Erie, Pa. It would be a tough job to have to choose between Barkouskie and Kaiser at this position, but there's enough work to go around and the two handle the task brilliantly. Kaiser is chiefly a defensive performer, but can also handle offensive duties. Hampered last year by knee injury, Kaiser will be in top condition for '51. Regular on wrestling squad last year. Played four years of high school football. Studying Rural and Industrial Recreation.



KAPP, Ben—5-10, 195 pounds. Sophomore, Paterson, N. J. Exhibited ability as freshman last year and improved steadily in spring drills. May have battle to see much action ahead of lettermen, but has the goods to produce. Lettered three years in high school. Light-heavyweight boxing champion of Passaic, N. J., in Golden Gloves. Studying Industrial Arts. 18-years old.

BROGDEN
PRODUCE CO., Inc.



WHOLESALE

Fruits and Produce
Distributors



RALEIGH

BELL BREAD
AND CAKE



Bell Bakeries, Inc.

102 Harrison Ave.
RALEIGH, N. C.

SWIFT RELIEF
from dandruff
AND DRY HAIR



CONTAINS WORLD FAMOUS
ANTISEPTIC
PILOCARPINE HYDROCHLORIDE

KILLS DANDRUFF GERMS

T. W. Swift Co., Mfg.
Winston-Salem, N. C.

Proprietors, Dials & Combs, Care of Dandruff

DRUG COUNTERS EVERYWHERE

NORTH CAROLINA STATE PLAYERS



NICHOLSON, John — 5-11, 180-pounds. Junior, Raleigh, N. C. Lettered as sophomore and will be important reserve in '51. Can develop into one of better linemen on team with more hard work. Selected All-Eastern team as prep schooler at Needham Broughton High, Raleigh. Studying Mechanical Engineering. 20-years old.



FLEMING, Bob—5-11, 160 pounds. Senior, Greenville, N. C. Probably has more guts and determination for man of his size than any one on squad. Has seen little varsity action in past three years, but is hard worker. Outstanding Greenville High athlete. 20-years old. Studying Agriculture and Biological Chemistry. Excellent student.



CROW, Marvin—6-2, 188 pounds. Sophomore, Lexington, N. C. Up from Freshman squad. Likely will be used as relief performer if improves as blocker. Good Pass receiver. Played in East-West North Carolina All-Star game in 1949. Named to All-Conference football team in high school. Studying Textiles. 18-years old.

JOB P. WYATT & SONS COMPANY

RALEIGH, N. C.



**HARDWARE
PAINT**

**IMPLEMENTS
SEEDS**

Brief Facts on N. C. State's 1951 Football Opponents

| Opponent | Nickname | Head Coach | Colors | Location | Game Officials |
|------------------|---------------|----------------|------------------------|--------------------|---|
| Catawba | Indians | Bob Spangler | Blue and White | Salisbury, N. C. | Referee Charlie Moas (Clemson) Umpire Paul Dunham (Tulsa) Linesman Joe Sink (Duke) Field Judge Reid Station (Wake Forest) |
| North Carolina | Tar Heels | Carl Snavely | Blue and White | Chapel Hill, N. C. | Referee J. D. Rogers (W. & L.) Umpire R. A. Collier (Wake Forest) Linesman T. J. Reames (Clemson) Field Judge John Todd (Wm. & Mary) |
| Wake Forest | Demon Deacons | Tom Rogers | Black and Gold | Wake Forest, N. C. | Referee H. V. Hooper (V.P.I.) Umpire Paul Dunham (Tulsa) Linesman Joe Sink (Duke) Field Judge John Todd (Wm. & Mary) |
| Clemson | Tigers | Frank Howard | Orange and Purple | Clemson, S. C. | Referee J. D. Rogers (W. & L.) Umpire R. A. Collier (Wake Forest) Linesman Dalton Williams (Pitt) Field Judge Lem Harper (S. Car.) |
| Duke | Blue Devils | Bill Murray | Blue and White | Durham, N. C. | Referee David Koffman (Johns Hopkins) Umpire R. A. Collier (Wake Forest) Linesman Dalton Williams (Pitt) Field Judge James Grey (Davidson) |
| William and Mary | Indians | Marvin Bass | Green, Silver and Gold | Williamsburg, Va. | Referee Dalton Kaufman (Johns Hopkins) Umpire James Howard (UNC) Linesman J. W. Jells (Wake Forest) Field Judge C. B. Kellerman (Sewanee) |
| Virginia Tech | Gobblers | Frank Moseley | Orange and Maroon | Blacksburg, Va. | Referee J. D. Rogers (W. & L.) Umpire A. R. Plaster (Duke) Linesman L. S. Pierce (Davidson) Field Judge Lem Harper (S. Car.) |
| Louisville | Cardinals | Jack Camp | Red and White | Louisville, Ky. | Referee (to be named) Umpire Paul Dunham (Tulsa) Linesman (to be named) Field Judge Fred Craft (S. Car.) |
| Davidson | Wildcats | Crowell Little | Red and Black | Davidson, N. C. | Referee W. R. Dukes (S. Car.) Umpire Ray Moore (unattached) Linesman Forrest Heath (UNC) Field Judge John Todd (Wm. & Mary) |
| Maryland | Terrapins | Jim Tatum | Black and Gold | College Park, Md. | Referee M. B. Mattox (W. & L.) Umpire Bob Plaster (Duke) Linesman L. S. Pierce (Davidson) Field Judge E. Allmond (Richmond) |

W. H. King Drug Co.

WHOLESALE DRUGGIST

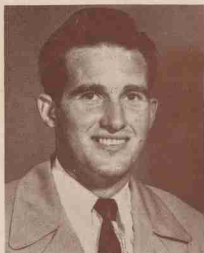
Raleigh, N. C.

FOR YOUR DRUG NEEDS SEE YOUR LOCAL DRUGGIST



The House of Friendly and Dependable Service

NORTH CAROLINA STATE PLAYERS



JONES, Harold—6-2, 200 pounds. Sophomore, Charlotte, N. C. Best offensive end on last year's freshman squad, excellent pass receiver. Needs work on blocking, but likely will see some action as season progresses. Outstanding high schooler three-letterman in football, baseball and basketball at Harding High, Charlotte. Named to All-City and All-State teams. Named Charlotte "Athlete of Year." 21-years old. Studying Textiles.

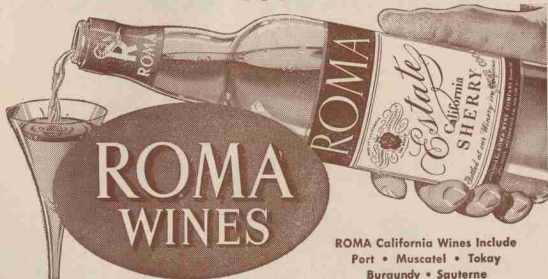


BAGONIS, Vince—5-11, 200 pounds. Senior, Luzerne, Pa. Regular for the past two seasons. Vince is certain to play a major role in the Wolfpack hopes for '51. Rugged blocker on offense and a tough defensive competitor. Selected All-State team last year and will bid strongly for All-Southern honors this season. Has plenty of stamina and can go 60 minutes if necessary. Studying Rural and Industrial Recreation. 20-years old. Catcher on baseball squad.



KOSILLA, Steve—6-1½, 180 pounds. Junior, Tarrytown, N. Y. Out of school last year because of scholastic difficulties Kosilla returns to bolster the '51 squad. He was standout as sophomore in '49 and likely will be regular performer this season. Great pass receiver. 22-years old. Earned monogram in '49 and caught four touchdown passes, two against Duke. Lettered three years in high school, also in baseball and track. Studying Rural and Industrial Recreation.

NEVER ACCEPT LESS THAN THE BEST
BUY—



ROMA California Wines Include
Port • Muscatel • Tokay
Burgundy • Sauterne

Distributed by

SIG SCHAFFER & SON

Raleigh, N. C.

We Pull For Raleigh

"Any Repair to Any Car"



CORNER DAVIE AND
PERSON STREETS

RALEIGH, N. C.

WE NEVER CLOSE

General Alumni Association - North Carolina State College

By G. SAM ROWE, President

The Alumni Association is an organization of alumni banded together with the sole idea, aim, and purpose of making North Carolina's land grant college the best in its field. Among more than two-score colleges in North Carolina, our own beloved North Carolina State is the only one responsible for training our citizens in the development of our natural resources. To make the proper use of our natural resources, we must train our minds and our bodies toward that desirable objective, a greater income for each person in this great state of ours.

In this limited space we can mention only a few ways in which our total wealth is being increased: such as the manufacture of attractive homes and furniture from the soil and forest; the increased production of textile fabrics; machinery and tools; electric power; transportation; the fabrication of steel and other metals; better utilization of the harvest from the ocean; more corn, cotton, tobacco, peanuts, pasture, fruits and vegetables per acre, and per hour of man and horse power; more meat and milk and eggs per pound of feed.

SANDERS ESSO SERVICE

Complete Station Needs

24 Hour Service



Good Luck to State's Team



506 Hillsboro St.

Road Service

Phone 4-9120

PLAYERS RETREAT

DRAFT BEER

MEALS — SANDWICHES

SPAGHETTI

Real Italian Style

BURNEY HANULA

A Wake Forest Football Player

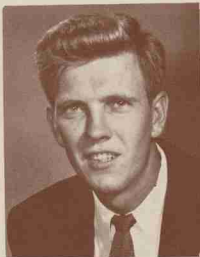
NORTH CAROLINA STATE PLAYERS



FRAUENHOFER, Chris—5-10, 185 pounds. Sophomore. Buffalo, N. Y. Saw some service last year as freshman, but will need experience to become regular. Has speed and is good pass receiver. Likely will be used chiefly in relief role. Studying Rural and Industrial Recreation. 20-years old.



THOMPSON, Jack — 5-11, 180 pounds. Sophomore. Buffalo, N. Y. Another promising newcomer who'll see action as reserve in '51. Is rough defensive man and can hold his own on offense. One of the better blockers on team. Studying Rural and Industrial Recreation. 20-years old.



SHARPE, Howell—6-2, 185 pounds. Junior. Cartersville, Ga. Saw some action last year as reserve and likely will get chance to play more at end this season. Promising defensive man and is developing as pass receiver and offensive blocker. Should see more and more action as season progresses.

Cooper's Furniture House

Opposite WPTF Radio Tower
Highways 1, 64 and 70



W. E. COOPER FURNITURE CO.

121 E. Martin St.

Phone 2-3146

RALEIGH, N. C.

★ ★ ★

FOR

GOOD FOOD

IT'S

PROESCHER'S

AIR CONDITIONED

★ ★ ★

State House Restaurant

130 S. Salisbury St.

Choice Seafood & Steaks

QUICK SERVICE

CAROLINA BLUE PRINTERS

109-111 S. Salisbury St.

*Blue Prints — Photostats — Technical
Supplies for Students*

C. C. MANGUM

Highway and Grading
Contractor

3016 Hillsboro St.

Raleigh, N. C.

Phone 3-1831

ELLIS LUNDY

Lundy Real Estate Company

Real Estate Since 1920

803 Capital Club Bldg.

Tel. 9812

Compliments of

LEON BYRUM

Opticians

117 W. Hargett St.

Raleigh



EATMAN'S

GULF SERVICE

3010 Hillsboro St.

●
We Never Close

●
ROAD SERVICE

Phone 3-3528

Member F.T.D.A.

GENE MORING, Florist

Five Points

RALEIGH, N. C.

Phone 7666

The Prospects At-A-Glance

1950 Lettermen Not Returning

Tony Romanowsky, end
 Roland Simon, end
 Norman Sloan, end
 Fred Davis, tackle
 John Martin, center
 John Harding, center
 Ed Mooney, tailback
 John Tenciek, blocking back

1950 Lettermen Returning

David Butler, end
 Bernie Allman, end
 Steve Kosilla, end
 John Nicholson, guard
 Vince Bagonis, guard
 Walter Schacht, guard
 Bill Cox, guard
 Bill Kennedy, guard
 Elmer Costa, tackle
 Fred Beaver, tackle
 Jim Hillman, tackle
 James Swart, tackle
 J. C. Britt, tackle
 Tom Tofaute, center

Ted Potts, tailback
 Alex Webster, tailback
 Jimmy Smith, wingback
 George McArthur, wingback
 Jim O'Rourke, fullback
 Harvey Yeates, fullback
 Vitus Kaiser, blocking back
 Ray Barkouskie, blocking back

1950 Reserves Returning

Charles O'Bryant, tackle
 Dick Spritz, fullback

1951 Sophomore Candidates

Jack Thompson, end
 Harold Jones, end
 Paul Smith, end
 Marvin Crow, end
 Ben Kapp, guard
 Glenn Nixon, guard
 Bill DeHart, tackle
 Percy Riden, tackle
 Junior Pierce, center
 Ralph Mueller, center
 Paul O'Hara, tailback
 Dick Bethune, tailback

Tommy Swanger, wingback
 Chris Frauenhofer, wingback
 Johnny Steele, wingback
 George Suda, fullback
 Carl Wyles, fullback
 Ralph Martini, blocking back
 Frank Strachota, blocking back

1951 Freshmen Candidates*

John Bagonis, guard
 Roland Fredericks, guard
 Hal McCarter, tailback
 Gerard Gaier, tailback
 George Hall, end
 Francis Northup, tackle
 Tom Pekarchick, blocking back

The Balance Sheet

| | |
|---------------------------|----|
| 1950 Lettermen Returning | 22 |
| 1950 Reserves Returning | 2 |
| 1951 Sophomore Candidates | 19 |
| 1951 Freshmen Candidates | 7 |
| Tentative Squad | 50 |

"Milk is a rich source of protein: the nutritive value of milk is unexcelled."

says The U. S. Dept. of Agriculture



Country fresh
PINE STATE
 Vitamin D Homogenized
MILK

is your best food buy!

PINE STATE CREAMERY
 MILK ● ICE CREAM ● DAIRY PRODUCTS

At Raleigh Theaters

State

Late Show Tonight
and Sunday thru Wednesday

"HE'S ALL MAN. . . ."

In The Ring or Anywhere!

"IRON MAN"

with

Jeff Chandler

Evelyn Keyes

Stephen McNally

Varsity

Now Playing
Stephen McNally
Coleen Gray

in
"APACHE DRUMS"

Sunday-Monday-Tuesday
Red Skelton

in
"EXCUSE MY DUST"

with
Sally Forrest

Wednesday Only
Jack Carson

in
"THE GROOM WORE SPURS"

AMBASSADOR

NOW PLAYING!

Jane Powell Vic Damone Wendell Corey
in

**"RICH YOUNG
AND PRETTY"**

In Technicolor

Entire Week . . . Starting Sunday!

Doris Day Gordon MacRae
in

"ON MOONLIGHT BAY"

Color By Technicolor

TOWER DRIVE IN

— Tonight —
Gary Cooper Ruth Roman
in

"DALLAS"
in Technicolor

Sunday and Monday
John Payne Dennis O'Keefe
in

"PASSAGE WEST"
in Technicolor

Tuesday and Wednesday
Frank Lovejoy
in

**"I WAS A COMMUNIST
FOR THE FBI"**

CAPITOL

Now Playing
Johnny Mack Brown
in

"BLAZING BULLETS"

Sunday and Monday
Susan Hayward Robert Preston
in

"TULSA"

Tuesday and Wednesday
Whip Wilson
in

"NEVADA BADMEN"

Thursday-Friday-Saturday
Gene Autry
in

"SILVER CANYON"

ITS MOVIE TIME USA

NORTH CAROLINA STATE PLAYERS



***POTTS, Edward (Ted)**—5-10, 175 pounds. Junior, Alexandria, Va. One of the key men for '51. Potts is excellent passer and brilliant kicker. Earned monogram as sophomore and packs a lot of wallop on his small frame. Will be looked to as successor to Ed Mooney as Wolfpack passer and has the ability to deliver. Great high school record at Alexandria, Va., named All-Metropolitan (Washington, D. C.), All-Suburban and All-State (Virginia). Studying Civil Engineering (Construction). 20-years old. Good student.



***WEBSTER, Alex**—210 pounds, 6-2, Junior Kearny, New Jersey. One of the brightest backfield prospects in State history. "Big Alex" may be the key to the Wolfpack success in '51. Hardest running tailback ever to wear State uniform and can pass and kick when necessary. Averaged nearly 20 yards on each punt return last year and scored three touchdowns. Great high school record, named All-State (New Jersey), All-Metropolitan (Kearny) and All-County. Studying Rural and Industrial Recreation. 20-years old.



***SMITH, James**—5-8, 175 pounds, Senior, Miami, Fla. "Smitty" is certainly proof that dynamite comes in small packages. Last year he was team's No. 1 wingback and appears certain of retaining that spot in '51. Is good pass receiver and particularly adept on defense. Opponents will find that Jimmy is one of the hardest tacklers for his size in the Southern Conference. Good runner and brilliant in open field. Used primarily on reverses and fakes well. Studying Rural and Industrial Recreation. 22-years old.

Get The Best - Get Sealtest

Southern Dairies

Sealtest
ICE CREAM

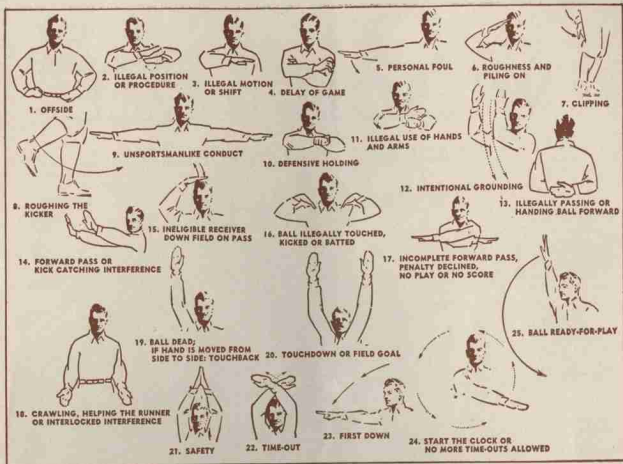
NORTH CAROLINA PLANTS

ALBEMARLE
ASHEVILLE
BREVARD

BRYSON CITY
CHARLOTTE
DURHAM
ELIZABETH CITY

FAYETTEVILLE
GREENSBORO
RALEIGH
ROCKY MOUNT

SALISBURY
WILSON
WINSTON-SALEM



"DEPENDABLE"

Dry Cleaning - Pressing - Altering

CAROLINA CLEANERS

116 Harrison Ave.

Branch Office—At College Court

1902 Hillsboro

8871 - Dial - 8871

WILSON UZZLE

CADILLAC -- OLDSMOBILE

Sales and Service

★ ★ ★ ★

WHEN IN RALEIGH

WILSON UZZLE, Inc.

421 Fayetteville St.

Phone 2-4474

★ ★ ★ ★

WHEN IN DURHAM

UZZLE MOTOR CO.

Corner Foster and Geer Streets

Phone 5191

★ ★ ★ ★

WHEN IN SANFORD

Uzzle Cadillac-Oldsmobile, Inc.

319 Wicker St.

Phone 773

**WORLD
PREMIERE**

1951 CROSLEY

America's Most Needed Car!

Now we have them on our floor—the new 1951 Crosley cars, the most improved cars you ever saw. They're bigger, sturdier, heavier. In fact, the Crosley today has so many improvements that until you drive a 1951 Crosley, you just can't know the Crosley as it is now. Powerful engine with 7.8:1 compression ratio, hundreds of mechanical improvements. Crosley is the car America needs most, the car you need most because **Crosley is still the only new car you can buy for less than \$1,000.** Compare with any new car. Crosley gives you the lowest price, lowest down payment, lowest monthly payments—and 35 to 50 miles on a gallon of regular gasoline!



9 New Models to Choose From!

Super Models have roll-down windows, fold-up rear seats, major upholstery improvements, including full inner lining and door trim. Super Sports now has big, solid, hinged doors. All models, Super and Standard, now equipped with Bendix 9 inch hydraulic brakes, hydraulic shock absorbers, heavy duty front axle, larger clutch and so many other improvements that we want you to come in and see for yourself.

SEE! DRIVE!—THE MOST IMPROVED CAR!



CROSLEY

A FINE Car

"You see them everywhere"

LYNN'S SERVICE GARAGE

336 S. Salisbury St.

Raleigh, N. C.



Super Station Wagon



Super Sedan



Super Convertible



Super Sports



Panel Delivery



Pick-up Truck

America's most
popular cigarette



FLAVOR

MILDNESS

