

25c

T
H
E

W
O
L
F
P
A
C
K

G
R
I
D
I
R
O
N

October 18, 1941
RIDDICK STADIUM
Raleigh, N. C.



N. C. STATE -
WAKE FOREST ISSUE

Official
Program

Volume XI

Number 3

We All Back the Wolfpack!

.... Let's Go!



Make The Carolina Your
Down Town Meeting
Place



Headquarters For
State College
Functions



Raleigh's Newest and Finest



HOTEL CAROLINA

Robert I. Lee, Manager
RALEIGH, NORTH CAROLINA



DEDICATION

To Wade Ison, North Carolina State's beloved Director of Sports Publicity who is on a leave of absence because of an unfortunate illness, and who has always been an inspiration to us because of his kind counsel, sincere fellowship, and unwavering devotion to State College and its athletic teams, we, the members of the 1941 Wolfpack, dedicate our efforts in tonight's football game with Wake Forest in the hope that the knowledge of our heartfelt affection and interest may shorten the road to recovery.

For the Team—

W. E. CARTER,
BOB CATHEY,
Co-Captains.

THE WOLFPACK GRIDIRON

N. C. State - Wake Forest Issue

Published five times annually for each N. C. State College home football game by the Sports Publicity Bureau of North Carolina State College. Dick Herbert, Publisher. \$1.00 per year, 25¢ per copy. National Advertising Representative: Don Spencer Company, Inc., 271 Madison Avenue, New York, N. Y.

Volume XI

Riddick Stadium, Raleigh, N. C., October 18, 1941

Number 3

NORTH CAROLINA STATE COLLEGE ATHLETIC COUNCIL

PROF. H. A. FISHER, *Chairman*
 DR. A. J. WILSON, *Secretary*
 DR. I. O. SCHAUB
 DR. J. L. STUCKEY
 DR. LODWICK HARTLEY

D. W. SEIFERT
 W. H. SULLIVAN
 A. G. FLOYD
 DAVID CLARK
 JOHN W. SEXTON

DINK CATON
 JACK HUCKABEE
 WOODY JONES
 DUDLEY ROBBINS
 W. W. WOMMACK

FOOTBALL STAFF

WILLIAMS (DOC) NEWTON, *Head Coach*
 HERMAN HICKMAN, *Line Coach*
 WALTER A. (BABE) WOOD, *Backfield Coach*
 JOHNNY F. MILLER, *Head, Department of Physical Education and Athletics*

JOHN L. VONGLAHN, *Business Manager of Athletics*
 DR. R. S. (BOB) WARREN, *Freshman Coach*
 E. M. (NIG) WALLER, *General Assistant*
 DR. G. B. POWELL, *Trainer*

N. C. STATE WOLFPACK SCHEDULE — 1941

*Sept. 20—RICHMOND	at RALEIGH, 8 p.m.
*Sept. 27—Davidson	at Greensboro
Oct. 4—Clemson	at Charlotte
*Oct. 11—Furman	at Greenville, S. C.
*Oct. 18—WAKE FOREST	at RALEIGH, 8 p.m.
*Oct. 25—NEWBERRY	at RALEIGH, 8 p.m.
Nov. 1—North Carolina	at Chapel Hill
Nov. 8—Virginia Tech	at Winston-Salem
Nov. 15—Georgetown	at Washington, D. C.
Nov. 22—DUKE	at RALEIGH, 2 p.m.
Nov. 29—William and Mary	at Williamsburg, Va.
*—Night Game.	

SUPPORT THE WOLFPACK!

**JOHNNY
CALLS 'EM**

SIGNALS & PENALTIES



Holding. (Penalty—by offense, 15 yards; by defense, 5 yards.)



Time out.



Offside or violation of kick-off formation. (Penalty 5 yards.)



Penalty refused, incomplete pass, missed field goal or conversion, both sides offside, etc.



Delay of game or extra time-outs. (Penalty, 5 yards.)



Illegal forward pass.

You can't help inhaling—But you can help your throat!



Crawling or pushing, 5 yds.; helping a ball carrier, 15 yards.



Safety.



Player illegally in motion. (Penalty, 5 yards. If from shift or huddle, 15 yards.)



Score — touchdown, field goal, or conversion.



Unnecessary roughness. Illegal defensive use of the hands, clipping, running into or roughing the kicker. (Penalty, 15 yards.)



Intentional grounding of forward pass. (Penalty — loss of down and 15 yard penalty from spot of preceding down.)

Philip Morris superiority is recognized by eminent medical



Illegal formation or position of one or more players. (Penalty — 3 yards from where ball was put in play.)



Illegal touching of kicked ball inside opponent's 10-yard line—touchback.



Unsportsmanlike conduct. (Penalty — 15 yards.) For flagrant unsportsmanlike conduct — 15 yard penalty and disqualification.

Interference with forward pass, pass touching ineligible player, or "screening" pass receiver. (If penalty on offense, when interference occurs beyond line of scrimmage, 15 yards and loss of down; on or behind line of scrimmage, loss of down only. Interference by defense, ball to offense on spot of foul as first down.)

authorities. For smoking pleasure without penalties—



CALL FOR PHILIP MORRIS!

AMERICA'S FINEST CIGARETTE

Wake Forest Deacons



JOHN POLANSKI
Back



CARL GIVLER
Guard

TIME OUT FOR ...
NEHI ORANGE



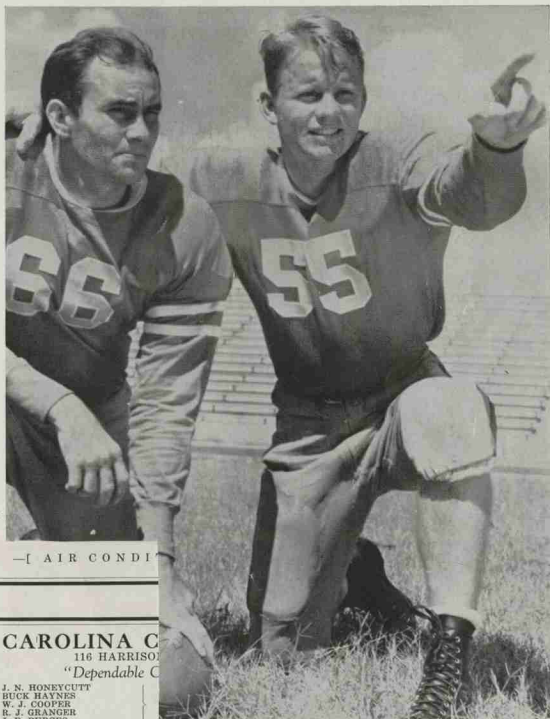
"Dem boys sho like dis NEHI Orange!" And you, too, will like the fruity flavor of this better blended Orange drink, known from Coast to Coast as the leader. It comes in the convenient 7-oz. bottle for only..... **10c**

TRY A BOTTLE NOW!

Raleigh NEHI Bottling Co.
RALEIGH

Wolfpack Co-Captains

**B
O
B
C
A
T
H
E
Y**



**C
U
T
I
E
C
A
R
T
E
R**

—[AIR CONDIT

CAROLINA C
116 HARRISON
"Dependable C

J. N. HONEYCUTT
BUCK HAYNES
W. J. COOPER
R. J. GRANGER
J. F. BURGESS

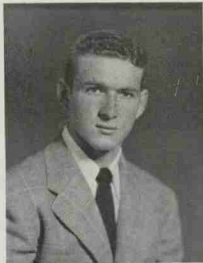
Room Service
DRY CLEANING — PRES
DYE
Dial 887

CAROLINA C
RALEIGH,





RUBE MORGAN, B.



JACK HUCKABEE, B.



FOY CLARK, B.



DICK WATTS, B.



JOHN BARR, G.



FRANK OWENS, E.



PHIL AVERY, E.



EARL STEWART, B.



WOODY JONES, T.

To Prevent Spills Like These



NORTH CAROLINA STATE RELIES ON SEAL-O-SAN

Give a big hand to Seal-O-San this fall when you see those spectacular basketball games in Frank Thompson Gymnasium. For with a 100% non-slippery finish on the floor, you see *faster footwork . . . speedier dribbling . . . more confident shooting.*

Today, more than 5,000 schools rely on slip-proof Seal-O-San for help in turning out winning teams.

Coaches and school officials are invited to write for complete details.

SEAL-O-SAN

NON-SLIPPERY SEAL & FINISH FOR GYMNASIUMS

Made Exclusively By

The HUNTINGTON LABORATORIES Inc
DENVER · HUNTINGTON INDIANA · TORONTO

WHEN IN RALEIGH ATTENDING
FOOTBALL GAMES

EAT AT

Warren's Cafeteria

130 South Salisbury Street

Raleigh, N. C.

— [AIR CONDITIONED] —

CAROLINA CLEANERS

116 HARRISON AVE.

"Dependable Cleaners"

J. N. HONEYCUTT
BUCK HAYNES
W. J. COOPER
E. J. GRANGER
J. F. BURGESS

N. C. State
Self Help
Student
Representatives

Room Service for
DRY CLEANING — PRESSING
DYEING — ALTERING
Dial 8871

CAROLINA CLEANERS

RALEIGH, N. C.



Something **NEW***
has been added!

WIN A LETTER for your sweater, and see what something new can do! And remember: Something new has been added to a cigarette, too—to make it even more pleasant!

*Latakia

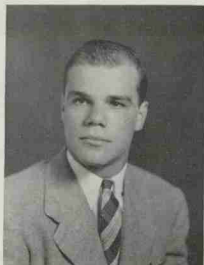
(Pronounced "La-ta-kee'-a"), a flavorful tobacco from the Eastern Mediterranean. Carefully blended with other famous tobaccos, Latakia creates an entirely new—even finer Old Gold flavor.

Some familiar pack
—but NEW
Old Gold!





PEANUT DOAK, B.



DINK CATON, G.



MAC WILLIAMS, G.



JOHN BRATTON, G.



BUCK SENTER, B.



DICK CALLAWAY, B.



BOLO STILWELL, E.



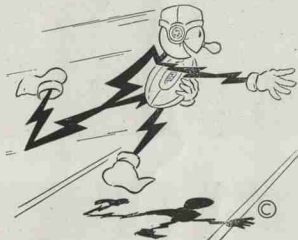
CHARLIE RIDDLE, G.



ED GIBSON, G.

KEEN EYESIGHT

is essential on the field!



Touchdowns and winning scores depend immeasurably on the keen sight as well as the training and ability of the players. So, eyes need the protection of PROPER LIGHT during reading and study hours—and that's true, not only of athletes but of all of us.

ELECTRIC DEALERS are always glad to demonstrate Sight-Saving Lamps without obligation. Many designs are very moderately priced.

SIGHT IS PRICELESS—
PROPER LIGHT IS CHEAP!

CAROLINA POWER & LIGHT COMPANY

We're for N. C. State

WIN OR LOSE!

INSURE WITH US AND
YOU CAN'T LOSE!

MUTUAL Insurance Agency

HUGH H. MURRAY, Jr. ('32), Manager

313 Lawyer's Bldg.

Phone 3091

RALEIGH

CHAMPION Knitwear Company

ROCHESTER, N. Y.

ATHLETIC KNIT GOODS

Leading Outfitters to Colleges in
the Southern Conference, Military
Schools, High Schools and
Others.

Catalogs on Request

CHAMPION Knitwear Company

Department HB — Rochester, N. Y.



DUD ROBBINS, B.



PETE BOLTREK, T.



NORM WIGGIN, C.



ART FAIRCLOTH, B.



TOM GOULD, T.



FLASH GORDON, B.



JOHN CULP, T.



DOBIE NELSON, B.



BARRETT WILSON, E.

On the
refreshing
side



DRINK

Coca-Cola

TRADE-MARK

N. C. State College Squad

No.	Name	Pos.	Wgt.	Hgt.	Age	Year	Home Town
32	Wagoner, Fred	G	185	6- 0	18	1	Gibsonville, N. C.
36	Johnson, Jim	E	175	6- 0	20	1	Rocky Mount, N. C.
37	Suniewick, Joe	TB	165	5- 8	21	1	S. Bound Brook, N. J.
40	*Fry, Cecil	BB	160	5- 8	20	2	Raleigh, N. C.
41	Callaway, Dick	WB	170	6- 0	19	1	Henderson, N. C.
43	Benenek, Ray	FB	180	5- 9	22	1	Jamestown, N. Y.
45	Culp, John	T	250	6- 1	20	1	Charlotte, N. C.
47	Wagoner, John	G	180	5-11	18	1	Gibsonville, N. C.
48	Ermalovich, Joe	G	180	5- 9	21	1	Logan, W. Va.
50	Singer, Jack	TB	155	5- 9	21	2	New York City
51	Faircloth, Art	TB	190	6- 0	20	1	Washington, D. C.
52	Gordon, Flash	WB	156	5-11	21	1	Washington, D. C.
53	Senter, Buck	FB	160	5- 7	19	1	Raleigh, N. C.
54	*Clark, Foy	WB	160	6- 0	21	2	Mt. Airy, N. C.
55	*Carter, Cutie (CC)	C	160	5- 9	23	3	Raleigh, N. C.
56	Turner, Tom	E	180	6- 2	19	2	Washington, D. C.
57	*Robbins, Dud	TB	180	5-11	20	3	Burgaw, N. C.
58	*Doak, Peanut	BB	175	5- 7	20	2	Raleigh, N. C.
59	*Stilwell, Marion	E	175	6- 2	20	2	Thomasville, N. C.
60	**Watts, Dick	TB	165	5-11	21	3	Baldwin, N. Y.
61	*Gilbert, Sonny	BB	175	5- 8	23	2	Mt. Airy, N. C.
62	*Dickerson, Doug	TB	160	5-11	21	2	Greensboro, N. C.
63	**Stewart, Earl	FB	170	6- 0	21	3	Roxboro, N. C.
64	**Barr, John		175	5-11	23	3	Charlotte, N. C.
65	*Avery, Phil	E	180	6- 0	22	3	Morganton, N. C.
66	**Cathey, Bob (CC)	BB	175	5-11	23	3	Charlotte, N. C.
67	Riddle, Charlie	G	183	5-11	21	2	Sanford, N. C.
68	*Allen, Jimmy	C	175	5-11	20	2	Raleigh, N. C.
69	Gibson, Edgar	G	175	6- 1	19	2	Greenville, N. C.
70	**Owens, Frank	E	185	6- 3	21	3	Charlotte, N. C.
71	Wilson, Barrett	E	175	6- 2	19	1	Raleigh, N. C.
72	Kwiatkoski, Joe	T	190	6- 0	20	1	Jeanette, Pa.
73	Bratton, John	G	165	5- 9	19	1	Raleigh, N. C.
74	Moser, Taylor	T	185	6- 2	18	1	Burlington, N. C.
75	*Morgan, Reuben	FB	185	5-10	22	3	Raleigh, N. C.
76	**Huckabee, Jack	WB	180	5-11	21	3	Charlotte, N. C.
77	*Caton, Dink	G	180	5-11	21	2	Concord, N. C.
78	**Jones, Woody	T	190	6- 1	20	3	Roxboro, N. C.
79	Nelson, Dobie	FB	200	6- 0	23	1	Maryville, Tenn.
80	*Boltrek, Pete	T	210	6- 1	20	2	Arverne, N. Y.
81	Sawyer, Ray	T	210	6- 0	20	1	Greensboro, N. C.
82	Ott, Lloyd	C	200	5-11	19	1	Lewisburg, W. Va.
83	Ballard, Carl	G	180	6- 0	19	1	Oxford, N. C.
84	*Wiggin, Norm	C	190	6- 0	22	3	Springfield, Pa.
85	*Gibson, Jardine	E	200	6- 2	21	2	Gastonia, N. C.
86	*Williams, Mac	G	185	5-11	21	2	Raleigh, N. C.
87	Fitchett, Carl	E	190	6- 3	19	1	Dunn, N. C.
88	Andrews, Mike	E	200	6- 1	22	1	Brooklyn, N. Y.
89	Gould, Tom	T	215	6- 2	21	1	Raleigh, N. C.

*Denotes Lettermen



TEAMWORK . . . every man doing the right thing at

the right time—makes a football team click.

When you drive into our service station, OUR teamwork starts to click—to give you complete, prompt, courteous, and efficient service.

For better service drive in to

TIRE SALES & SERVICE COMPANY, Inc.

GOODYEAR TIRES

Hillsboro and Harrington Sts.

"One Stop Super Service Station"

Phone 7571

MOTOROLA Car and Home Radios

EXIDE BATTERIES

Raleigh, N. C.

WE INVITE YOU
TO VISIT OUR

New Music Department

Carrying a complete line of sheet music
and records—both classical and popular.



McLellan's

Visit Our Luncheonette

Lewis
OF RALEIGH

Is the clothing shop for college
men as well as "downtowners."
When in our vicinity, drop in,
won't you? You'll like the
fashionable selection of distinc-
tive clothing and sportswear.
Suits, sport coats, and slacks
tailored by Stein Bloch.

Stein Bloch Clothes

"The Largest Sporting Goods Store in the South"

WAKE FOREST

LE Copley 80	LT Preston 20	LG Kapriva 60	C Starford 50	RG Givler 61	RT Jones 70	RE Geer 81
		QB Horchak 22			HB Perry 10	
	HB Cochran 42		FB Polanski 32			

SQUAD LIST

10 Perry, b	50 Starford, c	70 Jones, t
12 Cole, b	52 Beddow, c	72 Owen, t
14 Whitener, b	55 Harris, c	73 Rubino, t
20 Preston, c-t	60 Kapriva, g	80 Copley, e
22 Horchak, b	61 Givler, g	81 Geer, e
27 Hinerman, b	62 Karmazin, g	82 Moser, e
32 Polanski, b	65 Hefellinger, g	83 Cline, e
37 Duncavage, b	64 Zakim, g	84 Ciccarelli, e
39 Manierl, b	65 Palman, g	85 Capps, e
42 Cochran, b	66 Curran, e	87 Brown, e
43 Pruitt, b		89 Nesterak, e

OFFICIALS

Referee
Umpire

Toots Causey, South Carolina
Gus Tebell, Wisconsin

N. C. STATE

LE Stilwell 59	LT Jones 78	LG Riddle 67	C Carter 55	RG Caton 77	RT Holtrek 80	RE Gibson 85
			QB Cathey 66			
	LHB Watts 29			FB Stewart 63	RHB Huckabee 76	

SQUAD LIST

No. 32 Watts, b	No. 57 Robbins, b	No. 74 Moser, t
36 F. Wagoner, g	58 Doak, b	75 Morgan, b
37 Johnson, e	59 Stilwell, e	76 Huckabee, b
40 Fry, b	61 Ermalovich, b	77 Caton, g
41 Callaway, b	62 Dickerson, b	78 Jones, t
43 Benbenok, t	63 Stewart, b	79 Nelson, b
45 Culp, t	64 Barr, g	80 Holtrek, t
47 J. Wagoner, g	65 Avery, e	81 Sawyer, t
50 Singer, b	66 Cathey, b	82 Ott, e
51 Faircloth, b	67 Riddle, g	83 Ballard, g
52 Gordon, b	68 Allen, e	84 Wiggins, e
53 Senter, b	69 E. Gibson, g	85 J. Gibson, e
54 Clark, b	70 Owens, e	86 Williams, e
55 Carter, e	71 Wilson, e	87 Fitchett, g
56 Turner, e	72 Kwiatkoski, t	88 Andrews, e
	73 Bratton, g	89 Gould, t

Head Linesman
Field Judge

OFFICIALS

T. Miller, Richmond
Hap Perry, Elon

At all the Games

IT'S CHESTERFIELD

They Satisfy

Wake Forest Squad

No.	Name	Home Town	Pos.	Wt.	Ht.	Year
10	John Perry	Raleigh	HB	168	5- 8	1
12	Charles Cole	Carthage	HB	160	5-10	1
14	Clyde Whitener	Morganton	HB	170	5-10	1
20	Paddison Preston	Thomasville (L)	C-T	205	6-	2
22	Peter Horchak	Johnstown, Pa.	FB	166	5- 8	3
27	Joseph Hinerman	Richmond, Va.	HB	170	6-	1
32	John B. Polanski	Buffalo, N. Y. (LL)	HB	210	6- 3	3
37	Joseph Duncavage	Tamaqua, Pa.	HB	170	5-11	3
39	Raymond Manieri	Hopewell, Va. (L)	FB	155	5- 7	2
42	John Cochran	Birmingham, Ala.	HB	170	5-11	1
43	John Pruitt	Wilson (L)	QB	180	5-11	2
50	William Starford	Crafton, W. Va.	C	190	6- 2	1
52	William Beddow	Birmingham, Ala.	C	185	6- 2	1
55	Guy Harris, Jr.	Candor	C	200	5-10	2
60	Frank Kapriva	Johnstown, Pa. (LL)	G	200	5-11	3
61	Carl Givler	Allentown, Pa. (LL)	G	205	5- 9	3
62	Andrew Karmazin	Irwin, Pa.	G	190	5-10	1
63	Robert Heffelfinger	Martins Ferry, O.	G	185	5- 8	1
64	Frank Zakim	Hendersonville	G	195	5-10	2
65	Frank Palman	Lewiston, Maine	G	190	5- 9	1
66	Robert G. Currin	Oxford	E	160	5- 8	2
70	Elmer Jones	Buffalo, N. Y.	T	210	5-11	1
72	Charles Owen	Birmingham, Ala.	T	210	6-	1
73	Anthony Rubino	Elizabeth, Pa. (L)	T	200	5-11	2
80	James Copley	Weston, W. Va.	E	195	6-	1
81	Russell Geer, Jr.	Baltimore, Md. (L)	E	190	6- 3	3
82	Beverly Moser	Burlington (L)	E	180	5-10	3
83	Herbert B. Cline, Jr.	Chattaroy, W. Va.	E	180	6- 3	3
84	Jack Cicarelli	Shinnston, W. Va.	E	185	5-11	1
85	Robert Capps	Chadbourne	E	200	6- 1	1
87	Warren A. Brown	Rahway, N. J.	E	185	6- 1	1
89	Michael Nesteruk	Brackenridge, Pa.	E	180	6- 1	1



CARL FITCHETT, E.



CECIL FRY, B.



TAYLOR MOSER, T.



JOHN WAGONER, G.



FRED WAGONER, G.



CARL BALLARD, G.



SONNY GILBERT, B.



JACK SINGER, B.



JIMMY ALLEN, C.

The official football
timing watch for
N. C. STATE COLLEGE

Longines

THE WORLD'S MOST HONORED WATCH

Longines Watches, appointed official timepiece for this football game, were also used for official timing for the 1941 A.A.U. and I.C.4A Track Championships, the National A.A.U. Men's and Women's Swimming Championships, and many other important sports events. Longines Watches were selected as exclusive official timepiece for the 1940 Olympics. Among many associations which have chosen Longines Watches as official timepiece are National Aeronautic Association, American Automobile Association, and U. S. Polo Association.

Other honors bestowed upon Longines Watches for accuracy and elegance include 10 world's fair grand prizes and 28 gold medal awards. Throughout the world, no other name on a watch means so much as Longines, *The World's Most Honored Watch.*

*Watches of accuracy
and elegance by Longines*



The skill, experience, and workmanship necessary for the construction of Longines Watches for precision timing, aviation and navigation are reflected in the greater accuracy of every Longines Watch at any price. Longines jewelers show Longines personal watches of distinction from \$40 upward; also Wittnauer Watches from \$24.75, products of—
Longines-Wittnauer Watch Co., Inc., 580 Fifth Avenue, New York, N. Y.

CHICKEN IN THE ROUGH

STEAKS

Hamburgers - Cheeseburgers - Sandwiches

Air-conditioned Quick Service Clean

TASTY FOOD

The Town House

Just Across the Street

Light a
TAMPA NUGGET
Cigar

and Enjoy the Game.

Distributed by

Atlantic Tobacco Co., Inc.

311 S. Blount St.
Phone 9937

Raleigh, N. C.
W. W. HINNANT, Mgr.

HILKER BROS.

TAILORS : CLEANERS : FURRIERS

COLD FUR STORAGE

511 Hillsboro St.

16 W. Hargett St.

Dial: 8336 and 2-3367



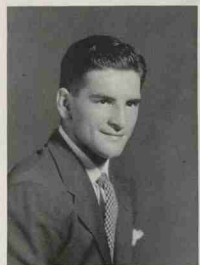
LLOYD OTT, C.



JOE KWIATKOSKI, T.



JIM JOHNSON, E.



JOE ERMALOVICH, G.



TOM TURNER, E.



JOE SUNIEWICK, B.



MIKE ANDREWS, E.

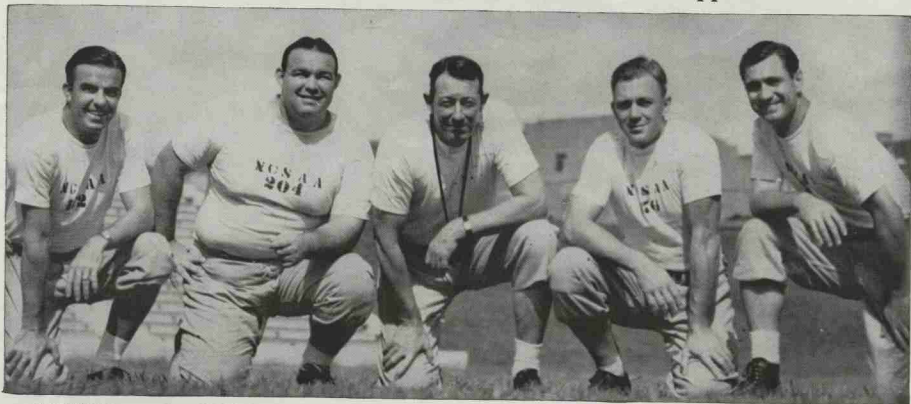


RAY BENBENEK, B.



RAY SAWYER, T.

L. L. Ivey is a member of The Wolfpack Club and is a supporter of . . .



NIG WALLER
General Assistant

HERMAN HICKMAN
Varsity Line Coach

WILLIAMS (Doc) NEWTON
Head Coach

DR. BOB WARREN
Freshman Coach

BABE WOOD
Varsity Backfield Coach

THE WOLFPACK COACHING STAFF

On your way . . . both to and from the Games you pass the

STUDENTS SUPPLY STORE, L. L. IVEY, Manager

Y. M. C. A. Building—Northeast Corner of Riddick Stadium

Make it a Point to stop in for Refreshments while you're on the Campus



HOOT GIBSON, E.



DOUG DICKERSON, B.

Rawlings

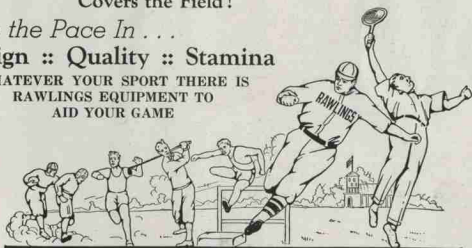
Covers the Field!

Sets the Pace In . . .

Design :: Quality :: Stamina

WHATEVER YOUR SPORT THERE IS
RAWLINGS EQUIPMENT TO
AID YOUR GAME

IT PAYS TO PLAY



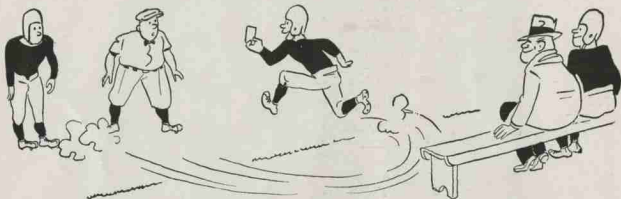
AVAILABLE THROUGH
JOHNSON-LAMBE CO. - - - RALEIGH

Rawlings

MANUFACTURING COMPANY
ST. LOUIS MISSOURI

"The official watch for timing all games is Longines—the world's most honored watch."

THE NEW RULES



By EDDIE DOOLEY

THE FOOTBALL rule changes this year, like a crème de menthe frappé, are short and sweet. They are easy to remember, and while apparently insignificant, will have marked effect on the game. Usually when changes are made in the mandates covering the game, there is quite a howl from coaches whose pet ideas are not part of the innovations. This time, however, almost all the football mentors in the circuit put their stamp of approval on the work of the rules committee.

This year, a team can make as many substitutions as it wishes, and the same player may return to the game in the same period in which he was withdrawn. Off-hand, the conclusion might be that this provision will work an injustice on small teams who are short of reserves. Since they have not as many substitutes they cannot meet the influx of fresh players sent into the fray by the opposing team.

The fact of the matter is, small teams get a break by reason of this new rule. Formerly a player taken out of the game in one quarter could not go back into action in the same session. Not infrequently small teams playing elevens of size and affluence found themselves in the embarrassing predicament of being shorthanded. Having sent all their reserves in the final quarter, the coach had to sit by and watch his men take a terrific trimming even though they might scarcely have been able to stand up. But under the new arrangement, there can be more interchanges of players, and the natural result will be a constant supply of fresh men going into the game. The weary player can be relieved repeatedly.

Spectators who fear football will be ruined by too many substitutions must not forget that in close games, coaches are unwilling to send in substitutes without good reason. They believe it is poor policy to send a boy to do a man's work, and if the sub were as good as the regular, he would have started the game anyway. If the game is a rout — well, who wants to stay to see the finish?

The most important change is that which permits the ball to be handed forward to a player in the backfield. Many teams have had plays in recent years which fla-

grantly violated the rule prohibiting a forward pass from less than five yards back of the line of scrimmage. But officials were lax about calling infractions, and little was done about enforcing the rule.

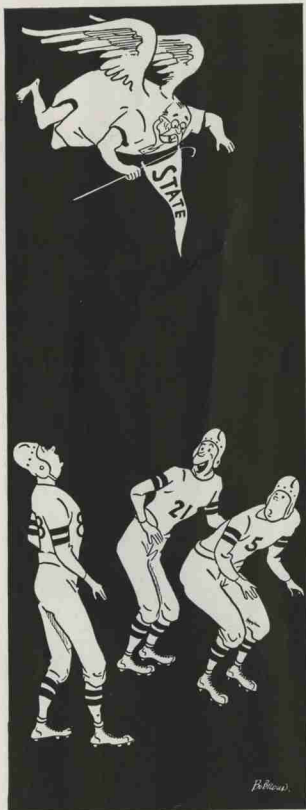
Under the present mandate, a back can go ripping towards the line, and just before he ploughs through, he can hand the ball to a teammate going the other way. Formerly it was necessary to hand the ball laterally or backwards on such a play. Not now. Any lineman, provided he is a yard back of the line of scrimmage and facing his own goal line, may carry the ball when handed to him by a back. This does not mean that guards and tackles will be seen running around like backs. Having a lineman play as a back does not help much, and the chances are there will not be many plays involving linemen handling the ball.

Another important change has to do with the pass. Formerly a fourth down pass incomplete in the end zone resulted in a touchback. If team A was on the five yard line, and had an incomplete pass over the goal line, it meant the other team took the ball on the 20 yard line, — a loss of fifteen precious yards. Under the new rule, the incomplete pass in the end zone is regarded as any other play, and the defending team takes possession at the point where the last play started.

This will encourage passing into the end zone, especially on fourth down. It will throw a heavier burden on a team with its back to the wall, because it will not find itself in such a safe position as formerly, when a fourth down pass went bad in the end zone resulting in a touchback.

The other change has to do with a player of the kicking team illegally touching a ball inside the opponent's ten yard line. This was often done to avoid the ball rolling over for a touchback. Now the rules in such an instance say a touchback is automatically declared when a player touches the ball illegally in this ten yard zone. In other words, it's hands-off the ball when it's bouncing around near the goal line. And that means a break for the receiving team.





"We knew old Hodgefuss '74 wouldn't miss homecoming!"

After the
Game ...

MAY WE SUGGEST

The Greatest Hotel Value
IN Raleigh NORTH CAROLINA
Hotel Sir Walter

Largest and
Finest

300 Rooms . . .
all with tub or
shower



All Outside
Rooms

With Bath
Beginning at \$2.50
daily

Carolina's Meeting Place

Only Hotel in Raleigh with *Circulating Ice Water*
and permanent Radios in every room ~ ~ ~

Air Conditioned Coffee Shop and Main Dining
Room with *Dinner and Dance Music* ~ ~ ~

A ROBERT MEYER HOTEL

Roland A. Mumford, Manager

Garage Adjoining

You will like our Coffee Shop

. . . and Colonial Room . . .

Reasonable Prices, too

HOTEL...
SIR WALTER

WELCOME, STATE
COLLEGE MEN!

Eckerd's
of Raleigh

DRUGS, TOILET ARTICLES
PRESCRIPTIONS FILLED
222 Fayetteville St. Phone 8675

CROMLEY - MELVIN
DRUGS

"Two Stores"
Sir Walter Hotel Bldg. 1217 Hillsboro St.
Phone 7533 Phone 5834

FOR N. C. STATE --- WIN OR LOSE!
BLAN CHAPMAN, '33
STORR ENGRAVING CO.
RALEIGH

FRED DIXON, '32
"A State College Man"

YANCEY & DIXON
GENERAL AGENTS
ATLANTIC LIFE INSURANCE
COMPANY

901-902 Raleigh Bldg.
Phone 8866

THE PETER PAN

"Best Steaks In Town"

1207 Hillsboro Street

Gresham Service Station

TEXACO PRODUCTS
2912 Hillsboro St.

*Buy
Jewelry*

WITH CONFIDENCE

from

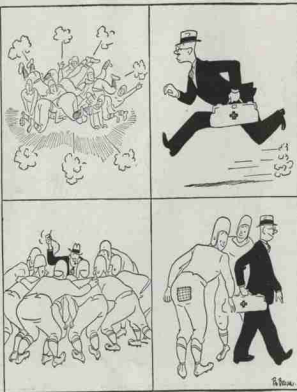
NEIMAN'S

—PLANNED BUDGET TERMS—

Agents for LONGINES Watches

109 Fayetteville St., Raleigh

"Where the Pledge is Fulfilled"



Lynn's Service Station

"EXTRA SERVICE WITHOUT EXTRA COST"

Next to the New Bus Station

ATLANTIC PRODUCTS

LEE TIRES

Phone 4841

WILLARD BATTERIES

Operators of

Carolina Hotel Garage

Storage—Open All Night—Service

Entrance, Side of Carolina Hotel

WILLIE M. LYNN, Prop.



WAKE FOREST DEACONS

The All-American Health Builder



Pine State

MILK

and

ICE CREAM

PINE STATE CREAMERY COMPANY

DIAL 2-3911

426 GLENWOOD AVE.

W. H. King Drug Co.

WHOLESALE DRUGGISTS

Raleigh, N. C.



Manufacturers of Page's CRU-MO

Wake Forest Deacons



Moser



Owen



Geer



Chataroy



Kapriva



Cochran



Butterworth
MANAGER



Horchak

THE WOLFPACK MEETS WAKE FOREST'S DEACS

SEARCH the record books and you won't find two colleges in North Carolina who have had a longer or more colorful football rivalry than tonight's opponents, Wake Forest and North Carolina State. . . . For the last 32 years without a single break, the Wolfpack and the Deacons have met on the gridiron. . . . The series started back in 1908, missed 1909, but took up again in 1910 and has been going every year since. . . . Over that long period State has a decided edge in victories with 22 to 8 for Wake Forest. . . . But in recent years the Deacs have held the edge. . . . Last fall it was 20-14 in favor of the Baptists and the year before that the margin was 32-0. . . .

Speaking of last year, those who were here in Riddick Stadium for that game will never forget it. . . . The Deacons were favored heavily, but State made a real contest of it. . . . In fact, the 'Pack held a 14-7 lead with only four minutes remaining to be played. . . . Pat Geer, Deacon end, broke through to block Dick Watts' punt and fall on the ball in the end zone for a touchdown. . . . Tony Gallovich booted the extra point to tie the score. . . . A little later J. V. Pruitt tossed a 36-yard pass which Tony Gallovich caught sensationally for the winning score.

Gallovich isn't with the Deacons this season, but in his place is a Raleigh boy who already rates as one of the outstanding sophomore backs in the entire country. . . . He is Johnny Perry who has been a regular at the wingback spot since the season opened. . . . He is the young man who scored two touchdowns against Duke, one of those being on a 95-yard kickoff return. . . . He will be one of the boys to watch tonight. . . . Keep your eye on him. . . . He is No. 10. . . .

There are Raleigh boys with State. . . . Fellows like Peanut Doak, Buck Senter, Rube Morgan, Mac Williams, Barrett Wilson, Tom Gould, Jimmy Allen, and Co-captain Cutie Carter play important parts for the Wolfpack. . . . Several of these boys played on the same high school teams with Perry. . . . State-Raleigh Day takes on added significance with so many of the state

capital's native sons being participants in tonight's game. . . .

This marks the fifth straight Southern Conference game for the Wolfpack. . . . State started off the season against Richmond in the first circuit engagement of the year. . . . That was followed by tests with Davidson, Clemson, and Furman. . . . The 'Pack goes against all of the top notchers in the loop and few will prove to be better than the Deacons. . . .

The first non-conference foe for the Wolfpack is on the schedule for next week when the Indians of Newberry come up from South Carolina to play in Riddick Stadium. . . . The Newberry eleven is coached by the veteran Billy Laval who will bring a well-drilled team here. . . . Last year the Indians won everything in sight and took three conference titles.—DH.

WATCH POSTAL PUT IT OVER!



A \$100,000 business deal to put over. . . . or a 20c birthday greeting to send, you can always depend on Postal Telegraph to do its part. For Postal Telegraph offers *faster, friendlier* service at *lower* cost. Charges for telegrams telephoned in appear on your phone bill.

Call Postal Telegraph To Send
BIRTHDAY GREETINGS RESERVATIONS
CONGRATULATORY WIRES SINGING TELEGRAMS
MONEY ORDERS TRAVEL MESSAGES

Postal Telegraph

"FIRST WHEN SECONDS COUNT!"

After the Game—
**RALEIGH'S FINEST
THEATERS**

WHERE ENTERTAINMENT COSTS
SO LITTLE

AMBASSADOR

Sunday-Monday-Tuesday

ANN SHERIDAN
JACK OAKIE
in

"NAVY BLUES"

Starts Wednesday, Oct. 22

IRENE DUNNE
ROBT. MONTGOMERY
in

"UNFINISHED BUSINESS"

CAPITOL

"Always
a
Good Show"

Monday-Tuesday, Oct. 20-21

See for Yourself What Is Going On
In Europe Today!

"UNDERGROUND"

Thursday, Oct. 23

MERLE OSBORNE - DENNIS MORGAN in

"AFFECTIONATELY YOURS"

STATE

LATE SHOW TONIGHT
11:30 o'Clock

and
Sunday-Monday
RUDY VALLEE
ANN MILLER
Rosemary Lane
Three Stooges
Allen Jenkins
Glen Gray and His
Casa Loma Band

in
**"TIME OUT
FOR RHYTHM"**

PALACE

Last Times Today
GENE AUTRY in

**"DOWN MEXICO
WAY"**

HELD OVER!
Sun.-Mon.-Tues.

BOB HOPE
PAULETTE GODDARD
in

**"NOTHING BUT
THE TRUTH"**