

**N. C. STATE-WAKE FOREST
ISSUE**

VOLUME X

Number 5

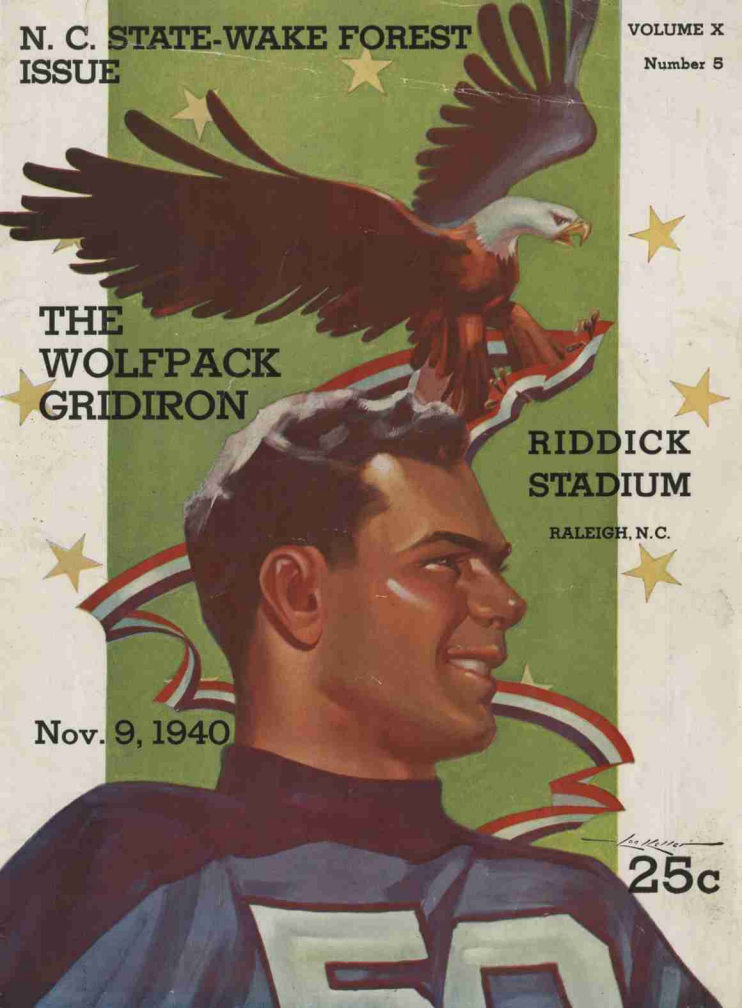
**THE
WOLFPACK
GRIDIRON**

**RIDDICK
STADIUM**

RALEIGH, N. C.

Nov. 9, 1940

Leo Miller
25c



'Ray Wolfpack!

Let's Go !!



Make The Carolina Your
Down Town Meeting
Place



Headquarters For
State College
Functions



Raleigh's Newest and Finest



Hotel Carolina

Robert I. Lee, Manager
RALEIGH, NORTH CAROLINA

THE WOLFPACK GRIDIRON

N. C. STATE - WAKE FOREST ISSUE

Published five times annually for each N. C. State College home football game by the Sports Publicity Bureau of North Carolina State College, Wade Isom, Publisher, \$1.00 per year, 25c per copy. National Advertising Representative: Don Spencer Company, Inc., 271 Madison Avenue, New York, N. Y.

Volume X

Riddick Stadium, Raleigh, N. C., November 9, 1940

Number 5

NORTH CAROLINA STATE COLLEGE ATHLETIC COUNCIL

PROF. H. A. FISHER, *Chairman*
 DR. A. J. WILSON, *Secretary*
 DR. I. O. SCHAUB
 DR. R. L. STUCKEY
 DR. LODWICK HARTLEY

D. W. SEIPERT
 W. H. SULLIVAN
 A. G. FLOYD
 DAVID CLARK
 JOHN A. SEXTON

PAUL LEHMAN
 ARNOLD KROCHMAL
 TOM ROWLAND
 JOHN BARR
 JACK HUCKABEE

FOOTBALL STAFF

WILLIAMS (DOC) NEWTON, *Head Coach*
 HERMAN HICKMAN, *Line Coach*
 WALTER A. (BABE) WOOD, *Backfield Coach*
 JOHNNY F. MILLER, *Head, Department of Physical Education and Athletics*

JOHN L. VONGLAHN, *Business Manager of Athletics*
 DR. R. S. (BOB) WARREN, *Freshman Coach*
 E. M. (NIG) WALLER, *General Assistant*
 DR. G. B. POWELL, *Trainer*

CONCESSIONS ON SALE IN RIDDICK STADIUM

CIGARETTES	20c
CAMELS, CHESTERFIELD, OLD GOLD, PHILIP MORRIS, RUM AND MAPLE	
RUM AND MAPLE SMOKING TOBACCO	25c
COCA-COLA	10c
DR. PEPPER	10c
ORANGE CRUSH AND FRUIT DRINKS	10c
BIRELEY'S ORANGE ADE	10c
NEHI FRUIT DRINKS	10c
7-UP	10c
COFFEE	10c
HOT DOGS WITH STAUDT'S ROLLS	10c
PINE STATE AND WHITE'S ICE CREAM	10c
PEANUTS	10c
CANDIES	5c



President
WOLFPACK CLUB and
General Alumni Association



D. W. (DUTCH) SEIFERT, '13

SIGNALS & PENALTIES

BY - JOHNNY

"CALL FOR PHILIP MORRIS"



Holding. (Penalty—by offense, 15 yards; by defense, 5 yards.)

Interference with forward pass: pass touching ineligible player, or "screening" pass receiver. (If penalty on offense, when interference occurs beyond line of scrimmage, 15 yards and loss of down, on or behind line of scrimmage; loss of down only. Interference by defense, ball to offense on spot of foul as first down.)



Time out.



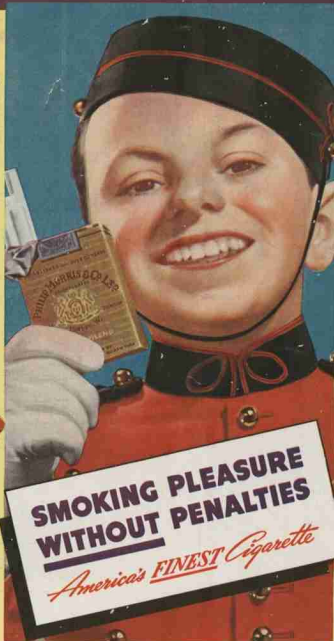
Offside or violation of kick-off formation. (Penalty, 5 yards.)



Penalty re-formation. Incomplete pass, missed field goal or conversion, both sides offside, etc.



Delay of game or extra time-outs. (Penalty, 5 yards.)



Crawling or pushing, 5 yds.; helping ball carrier, 15 yards.



Illegal forward pass.



Safety.



Score—touchdown, field goal, or conversion.



Player illegal in motion. (Penalty, 5 yards. If from shift or huddle, 15 yards.)



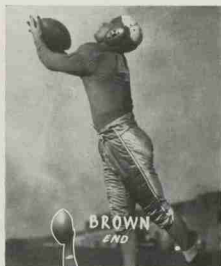
Unnecessary roughness, illegal defensive use of the hands, clipping, running into or roughing the kicker. (Penalty, 15 yards.)

BEST WISHES
WOLFPACK

G
O
O
D



H
E
A
L
T
H

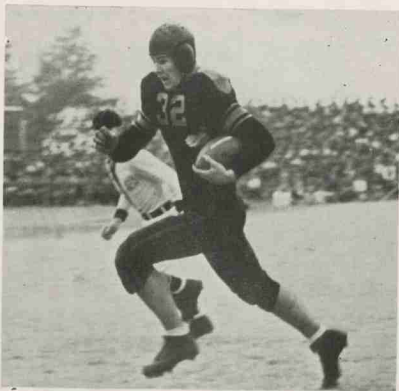


Wolfpack Co-Captains



Center Howell Stroup (left) and Fullback Pat Fehley

DEMON DEACON



JOHN POLANSKI



... better go **GREYHOUND**

Long runs are fine on the football field, but mighty tiring when they're made in the family car. Next time, take a tip from the boys on the team . . . step into a comfortable Greyhound SuperCoach and enjoy yourself! Watch the miles roll by as you relax in a deep-cushioned chair . . . and watch the savings roll back into your budget! For fun, for less, go Greyhound!

For complete information, phone or visit nearest Greyhound Terminal



GREYHOUND
Lines

THEIR SCHOOLS MEETING TODAY



COL. J. W. HARRELSON
Dean of Administration
N. C. State College



DR. THURMAN D. KITCHIN
President
WAKE FOREST COLLEGE



TONY RUBINO
TACKLE



CARL GIVLER
GUARD



TED KUNKEL
TACKLE

Demon Deacons



FRANK KAPRIVA
GUARD



PAT PRESTON
TACKLE



J. V. PRUITT
QUARTERBACK

After the Game—
**RALEIGH'S FINEST
THEATERS**

WHERE ENTERTAINMENT COSTS
SO LITTLE

AMBASSADOR

Last Times Today

MICKEY ROONEY - JUDY GARLAND
In

"STRIKE UP THE BAND"

Sun.-Mon.-Tues.

TYRONE POWER in
"BRIGHAM YOUNG"

with LINDA DARNELL

Wed.-Thurs.-Fri.-Sat.

"DOWN ARGENTINE WAY"

Betty Grable - Don Ameche
Carmen Miranda

Saturday 10 a. m.

All Your Favorite Cartoon Characters in
A "KIDDIE CARTOON MATINEE"

CAPITOL

Matinee 15c

Night 20c

Sunday Only

RICHARD ARLEN - ANDY DEVINE
In

"BLACK DIAMONDS"

Monday-Tuesday

Olivia DeHavilland - Jeffrey Lynn
In

"MY LOVE CAME BACK"

STATE

Today Only
ON STAGE
In Person

'LUM and ABNER'

Sunday-Monday

'Captain Caution'

Tuesday-Wednesday
Joan Bennett

In
'THE MAN I MARRIED'

PALACE

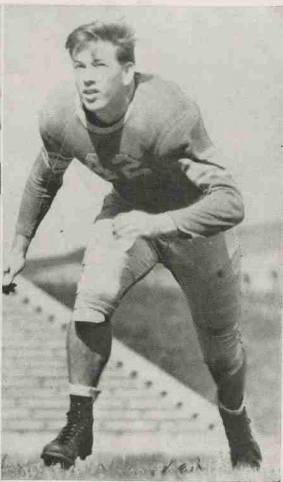
—Last Times Today—
BORIS KARLOFF in
'Before I Hang'

—Sun.-Mon.-Tues.—
HELD OVER!

Mickey Rooney
Judy Garland

**'Strike Up the
Band'**

—Fri.-Sat.—
Gene Autry
In His Latest Hit!
**"RIDE, TENDERFOOT,
RIDE"**



Top left
MARION STILWELL

Bottom left
PHIL AVERY

Right
JOHN BARR



DUD ROBBINS



NORM WIGGIN



HOBART FERREE



PEANUT DOAK

The official watch
for timing all
N. C. STATE
FOOTBALL GAMES IS
Longines

THE WORLD'S MOST HONORED WATCH

Longines Watches, selected as official watch by the 1940 Olympic Committee, is also official watch for timing the football games for more than 100 leading colleges; timed 20 of the leading track meets of 1940 and the major intercollegiate basketball games. Longines is also official watch for the National Professional Football League and was worn by all umpires officiating at American and National League baseball games of 1940 including the World Series. Among the 104 national and international sports and contest bodies for which Longines is official watch are National Aeronautic Association, American Automobile Association, National Power Boat Association, International Federation du Ski, American Lawn Tennis Association, and U. S. Polo Association.

The world-leadership of Longines Watches is further attested by 10 world's fair grand prizes, 28 gold medals and more honors for accuracy than any other timepiece. Truly Longines is . . . the world's most honored watch.

Watches of accuracy
and elegance by Longines



The skill, experience and workmanship necessary for the construction of Longines Watches for precision timing, aviation, and navigation is reflected in the greater accuracy of every Longines Watch at any price. Longines-Wittnauer jewelers show Longines personal watches of distinction priced \$40 upward; Wittnauer watches from \$24.75.

LONGINES-WITTAUER WATCH CO., Inc.
580 FIFTH AVENUE, NEW YORK, N. Y.



TEAMWORK . . . every man doing the right thing at

the right time—makes a football team click.

When you drive into our service station, OUR teamwork starts to click—to give you complete, prompt, courteous, and efficient service.

For better service drive in to

TIRE SALES & SERVICE COMPANY, Inc.

GOODYEAR TIRES

"One Stop Super Service Station"

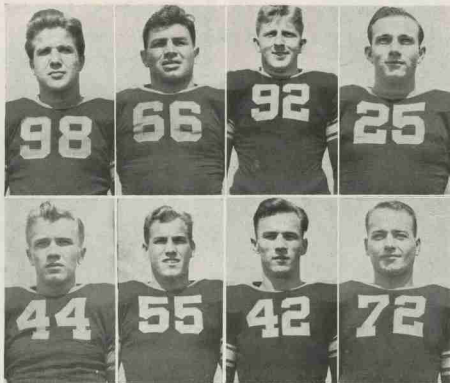
EXIDE BATTERIES

Hillsboro and Harrington Sts.

Phone 7571

Raleigh, N. C.

DEMON DEACONS



Top row, left to right: JIMMY RINGGOLD, LOUIE TRUNZO, BUTCH CLARK, MELVIN LAYTON. Bottom row: JOE DUNCAVAGE, PETE HORCHAK, PAUL WAIVERS, TONY BALIONIS.

North Carolina State College Squad

No.	Player	Pos.	Age	Wgt.	Hgt.	Yrs. on var.	Home Town
11	Jim Barber	HB	19	158	5-10	1	Hamlet, N. C.
12	Doug Dickerson	HB	20	162	5-11	1	Greensboro, N. C.
14	R. (Peanut) Doak	FB	19	167	5-6	1	Raleigh, N. C.
15	Cutie Carter	C	22	162	5-10	2	Raleigh, N. C.
16	Monte Crawford	E	22	180	5-11	3	Graham, N. C.
17	Hobart Ferree	HB	21	157	5-11	1	High Point, N. C.
18	*Jack Huckabee	HB	20	181	5-11	2	Charlotte, N. C.
19	Dink Caton	G	20	182	5-11	1	Concord, N. C.
20	Edgar Gibson	C	18	169	6	1	Greenville, N. C.
21	Jimmy Allen	C	19	176	5-10	1	Raleigh, N. C.
22	Sonny Gilbert	FB	21	176	5-8	1	Mt. Airy, N. C.
23	Reuben Morgan	FB	22	197	6	2	Raleigh, N. C.
24	*Pat Fehley (C.C.)	FB	22	181	5-10	3	Easton, Pa.
25	*Bob Cathey	QB	22	174	5-10	2	Charlotte, N. C.
26	*John Barr	G	22	180	5-11	2	Charlotte, N. C.
27	Dud Robbins	HB	19	175	5-10	1	Burgaw, N. C.
28	Howell Stroup (C.C.)	C	21	201	6-1	3	Cherryville, N. C.
29	*Dick Watts	HB	20	171	6	2	Baldwin, N. Y.
30	*Woody Jones	T	19	194	6-1	2	Roxboro, N. C.
31	*Earl Stewart	FB	20	177	6	2	Roxboro, N. C.
32	*Bill Windley	T	22	198	5-11	3	Pantego, N. C.
33	Milburn Long	T	23	191	6	1	Athens, Tenn.
34	*J. D. Jones	G	21	174	5-10	2	Asheville, N. C.
35	Phil Avery	E	20	181	6	2	Morganton, N. C.
36	Jardine Gibson	FB	20	206	6	1	Gastonia, N. C.
37	Jack Singer	HB	20	146	5-9	1	New York, N. Y.
38	*Dick (Magic) East	HB	22	166	6	2	Raleigh, N. C.
39	Peter Boltrek	T	19	216	6-1	1	Averne, N. Y.
40	Cecil Fry	QB	19	158	5-8	1	Raleigh, N. C.
41	*Curtis Ramsey	T	21	223	6-2	2	Crumpler, W. Va.
42	Chick Doak, Jr.	G	21	171	5-8	1	Raleigh, N. C.
43	*Ralph Burt	G	21	207	6	3	Raleigh, N. C.
44	*Wade Brown	E	19	199	6-3	2	Rockwell, N. C.
45	*Frank Owens	E	20	186	6-3	2	Charlotte, N. C.
46	Charley Riddle	G	20	182	5-9	1	Sanford, N. C.
47	Mac Williams	G	20	187	5-10	1	Raleigh, N. C.
48	Norm Wiggin	QB	21	198	6	1	Haverford, Pa.
49	Marion Stilwell	E	19	172	6-2	1	Thomasville, N. C.
50	John Edmiston	T	24	223	5-10	1	Mooresville, N. C.
53	Foy Clark	HB	20	160	6	1	Mt. Airy, N. C.

*Denotes Lettermen

DO YOU SMOKE THE CIGARETTE THAT

Satisfies

THAT'S COOLER... BETTER-TASTING
DEFINITELY Milder

Wake Forest

LE Jett 82 LT Preston 41 LG Givler 99 C Pen-gast 33 RG Kapri-a 10 RT Rubino 88 RE Waivers 42

QB
Fruitt
34

LHB
Polanski
32

RHB
Gallovich
77

FB
Ringgold
98

SQUAD LIST

No.	No.	No.
17 George, t	38 Manier, b	64 Meyer, e
21 Edwards, b	40 Kapri-a, g	66 Trunzo, g
22 Zakim, g	41 Preston, t	72 Ballonis, g
24 Pivec, t	42 Waivers, e	77 Gallovich, b
25 Layton, b	44 Dumcavage, b	83 Harris, c
27 Dowdy, b	48 Sink, c	82 Jett, e
32 Polanski, b	50 Mayberry, b	88 Rubino, t
33 Pendergast, e	55 Horchak, b	92 Clark, c
34 Pruitt, b	61 Kunkel, t	97 Moser, g
36 Welch, b	63 Geer, e	98 Ringgold, b
37 Vanden Dries, e		99 Givler, g

OFFICIALS

Referee Dutch Eberts, Catholic U.
Umpire Bob Collier, Wake Forest

N. C. State

LE Stiiwell 49 LT Windley 32 LG Caton 19 C Stroup 28 RG Burt 43 RT Ramsey 41 RE Avery 35

QB
Cathy
25

LHB
Watts
29

RHB
Huckabee
18

FB
Fehley
24

SQUAD LIST

No.	No.	No.
11 Barber, b	26 Barr, g	40 Frr, b
12 Dickerson, b	27 Robbins, b	41 Ramsey, t
14 R. Doak, b	28 Stroup, e	42 C. Doak, g
15 Carter, e	29 Watts, b	43 Burt, g
16 Crawford, e	30 W. Jones, t	44 Brown, e
17 Ferree, b	31 Stewart, b	45 Owens, e
18 Huckabee, b	32 Windley, t	46 Riddle, g
19 Caton, g	33 Long, t	47 Williams, g
20 E. Gibson, e	34 J. Jones, g	48 Wiggin, b
21 Allen, c	35 Avery, e	49 Stiiwell, e
22 Gilbert, b	36 J. Gibson, b	50 Edmiston, t
23 Morgan, e	37 Singer, b	53 Clark, b
24 Fehley, b	38 East, b	
25 Cathy, b	39 Boltrek, t	

OFFICIALS

Head Linesman Sam Jackson, E. & H.
Field Judge Nap Perry, Elon

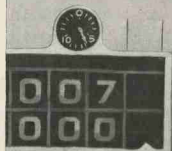
Wake Forest College Squad

No.	Player	Pos.	Wgt.	Hgt.	Yrs. on var.	Home Town
17	Marshall George	T	263	6	1	Sewickley, Pa.
21	*Marshall Edwards	HB	188	6	3	Spray, N. C.
22	Frank (Pop) Zakim	G	195	5-10	1	Hendersonville, N. C.
24	*Larry Pivec	T	190	5-11	3	Baltimore, Md.
25	*Melvin (Molly) Layton	HB	175	5-7	3	Edenton, N. C.
27	*Jim Dowdy	HB	176	5-10	2	Richmond, Va.
32	*John Polanski (Jolting John)	HB	210	6-1	2	Buffalo, N. Y.
33	*John Pendergast	C	181	6	3	Readville, Mass.
34	J. V. Pruitt	QB	177	5-11	1	Wilson, N. C.
36	Freddie Welch	HB	150	5-7	3	Greensboro, N. C.
37	*Bill Vanden Dries	E	175	5-10	3	Brooklyn, N. Y.
39	Ray Manieri	HB	155	5-7	1	Hopewell, Va.
40	*Frank Kapriva	G	200	5-11	2	Johnstown, Pa.
41	Pat Preston	T	195	6	1	Thomasville, N. C.
42	*Paul Waivers	E	180	5-11	3	Keyport, N. J.
44	Joe Duncavage	QB	170	5-11	2	Tamaqua, Pa.
48	Ed Sink	C	195	5-11	1	Durham, N. C.
50	*Red Mayberry	QB	165	5-8	3	Mt. Airy, N. C.
55	Pete Horchak	FB	166	5-8	2	Johnstown, Pa.
61	*Ted Kunkel	T	195	6	2	Baltimore, Md.
63	Pat Geer	E	190	6-2	2	Baltimore, Md.
64	Gil Meyer	E	190	6-2	1	Baltimore, Md.
66	*Louis Trunzo	G	180	5-7	3	Apollo, Pa.
72	*Tony Balinois	G	180	5-11	3	Homestead, Pa.
77	*Tony Gallovich	HB	172	5-8	3	Vandergrift, Pa.
82	*John Jett	E	215	6-5	3	West Union, W. Va.
83	Phil Harris	C	200	5-7	1	Candor, N. C.
88	Tony Rubine	T	200	5-11	1	Elizabeth, Pa.
92	*Butch Clark	C	174	5-9	3	Baltimore, Md.
97	Beverly Moser	G	180	5-10	2	Burlington, N. C.
98	*Jim Ringgold (C)	FB	185	5-10	3	Baltimore, Md.
99	*Garl Givler	G	205	5-9	2	Allentown, Pa.

*Denotes Lettermen

DRINK
Coca-Cola

ALWAYS ON
THE
REFRESHING
SIDE



To PREVENT SPILLS LIKE *These*



NORTH CAROLINA STATE RELIES ON SEAL-O-SAN

Give a big hand to Seal-O-San this fall when you see those spectacular basketball games in Frank Thompson Gymnasium. For with a 100% non-slippery finish on the floor, you see *faster* footwork . . . *speedier* dribbling . . . *more confident* shooting.

Today, more than 5000 schools rely on slip-proof Seal-O-San for help in turning out winning teams.

Coaches and school officials are invited to write for complete details.

SEAL-O-SAN

NON-SLIPPERY SEAL & FINISH FOR GYMNASIUMS

MADE EXCLUSIVELY BY

The HUNTINGTON LABORATORIES Inc
DENVER • HUNTINGTON INDIANA • TORONTO

Feel FRESH!

DRINK

ORANGE--CRUSH

CARBONATED BEVERAGE

—An All Season Choice

NuGRAPE

SODA

Raleigh Orange-Crush Bottling Co.

Phone 2-1246

221 East Davie Street

Head Coaches of the Wolfpack



COACH ROMEO LEFORT
Varsity and Frosh Swimming



COACH WILLIAMS (DOC) NEWTON
Varsity Football and Baseball

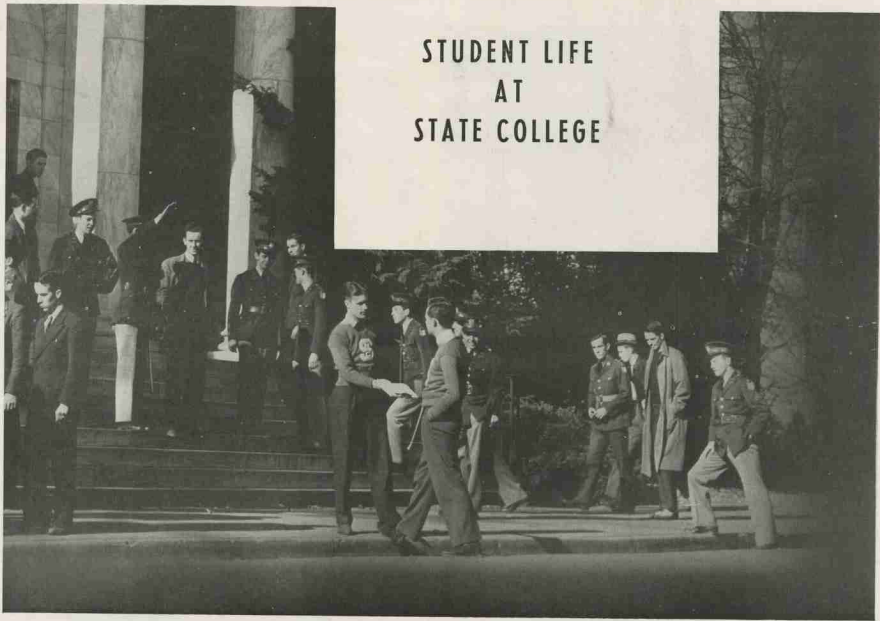


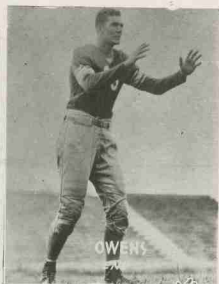
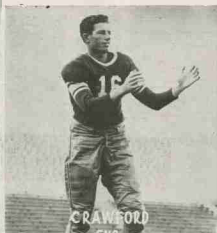
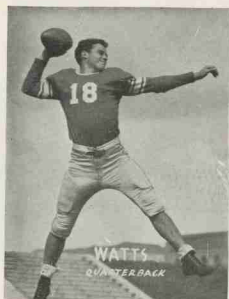
COACH BOB WARREN
Varsity Basketball



COACH HERMAN HICKMAN
Varsity Track and Wrestling

STUDENT LIFE
AT
STATE COLLEGE

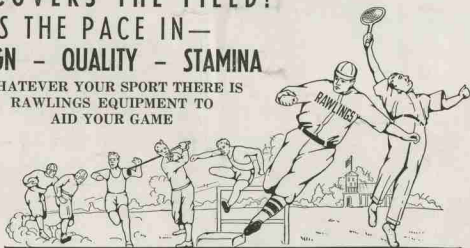




**RAWLINGS
COVERS THE FIELD!
SETS THE PACE IN—
DESIGN - QUALITY - STAMINA**

WHATEVER YOUR SPORT THERE IS
RAWLINGS EQUIPMENT TO
AID YOUR GAME

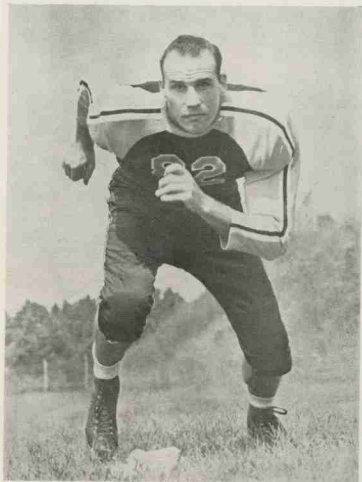
IT PAYS TO PLAY!



AVAILABLE THROUGH
JOHNSON-LAMBE CO. - - - RALEIGH

Rawlings

MANUFACTURING COMPANY
ST. LOUIS MISSOURI



Wake's JOHN JETT



Among Fine Watches No Name is
More Respected Than LONGINES

We invite your inspection of our
complete showing of the smart
new 1941 Longines Watches . . .

SOLD IN RALEIGH BY

NEIMAN'S

"Dependable Jewelers"

Pointer Cigar Co.

337 S. Wilmington St.

Phone 5238



State's CUTIE CARTER and RALPH BURT

NOW THAT YOU'RE IN THE RIGHT SPIRIT
LET'S MAKE A NIGHT OF IT
AFTER THE GAME

CAROLINA CLUB At Carolina Pines
Clubhouse 2 Miles
South of Raleigh —
Route 15A — Fayetteville Road

JACK WARDLAW'S ROLLING RHYTHM

WITH

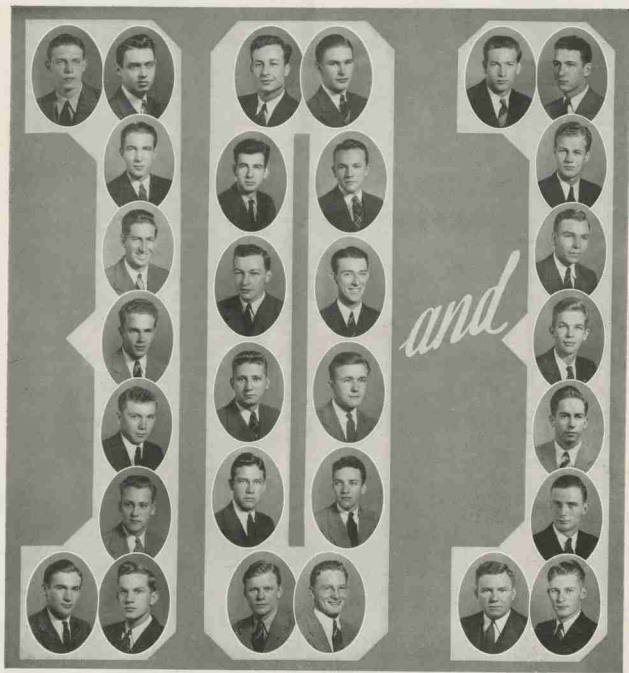
BUDDY DUNN, M. C.

JOANNE LEAUX, Songstress

A NEW FLOOR SHOW EACH SATURDAY

75c Each, Plus Tax—For Reservations Phone 9334

No Cover, Minimum, Table or Corkage Charge



The order of Thirty and Three is a N. C. State College honorary sophomore leadership fraternity and was founded in 1931. The purpose of the Order is to recognize leadership ability, scholarship, interest in college welfare and good character. Thirty and Three also serves as a good will organization to visiting teams. Each year eleven men are selected from the sophomore class for membership, six during the fall term and the remaining five during the spring term. Thus the significance of the name, Order of Thirty and Three.



J. F. MILLER
Head, Department of Physical
Education and Athletics



PROF. H. A. FISHER
Chairman of
Athletic Council



J. L. VONLAHN
Business Manager
of Athletics

FOR N. C. STATE --- WIN OR LOSE!

BLAN CHAPMAN, '33

STORR ENGRAVING CO.

RALEIGH

**STAUDT'S BUTTERNUT
BREAD**

SERVED HERE

STAUDT'S

—Since 1896—

**KEEP FIT—play
Badminton**

When great plays
are made—it's the

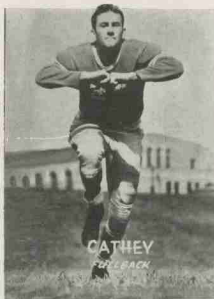
SPALDING
J5-V!

Here's the ball used
in the great gridiron
classics, in record
punts and passes, by
America's top-rank
college teams.



The new way to get in
shape, keep fit, have
fun. It's everybody's
game — men, women,
boys, girls—year round,
indoors, outdoors. Easy
to learn, inexpensive.
Badminton clubs are
springing up every-
where — schools, gyms,
parish houses. Your
SPALDING dealer will
help you get started
right. Spalding Rackets,
Birds—complete Spald-
ing Badminton Sets at
all popular prices.

A. G. Spalding & Bros.
DIVISION OF SPALDING SALES CORPORATION
Athletic Equipment



CATHEY
FREE BACK



RUM and MAPLE TOBACCO CORP.'S

Original

RUM and MAPLE BLEND 53

PIPE MIXTURE and CIGARETTE

*It pleases all
pipe smokers*

Now every smoker can enjoy the thrilling taste and aroma of Original Rum & Maple Blend 53 Pipe Mixture and Cigarette—both infused with Jamaica Rum and Vermont Maple Sugar. Be sure you get the Original. Guard against imitators who print "Rum & Maple" on the package but not as part of their brand name.



25c
was 70c

LOOK FOR
"Blend 53" on Pipe Mixture
"Blend 53C" on Cigarettes
and
RUM & MAPLE TOBACCO CORP.
on all packages

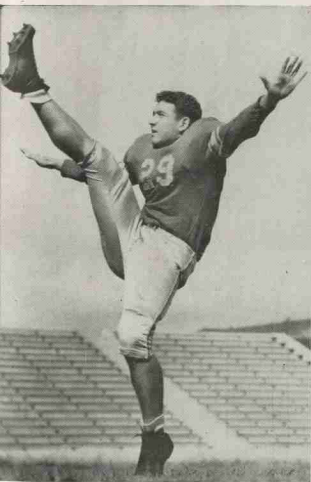
*Famed for
Flavor*

15c
was 40c



Price
Reduced
NOW
20 for 15c

Products of RUM & MAPLE TOBACCO CORPORATION - NEW YORK, N.Y.



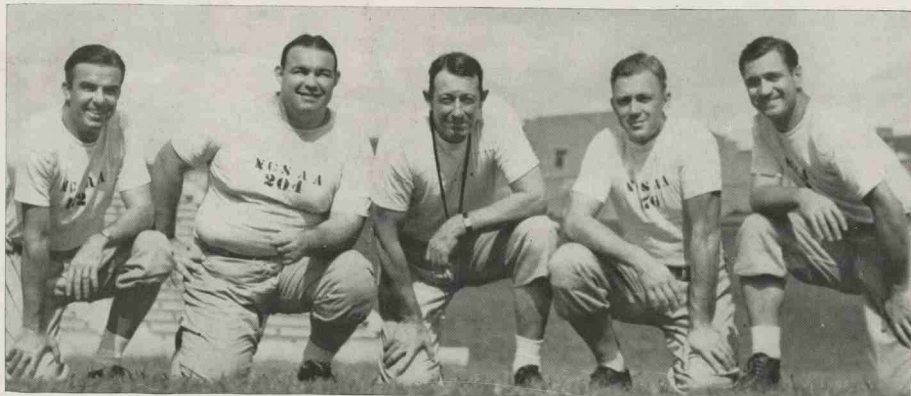
JACK HUCKABEE



Left
RUBE MORGAN
Bottom
WOODY JONES



L. L. IVEY is a member of The Wolfpack Club and is a supporter of . . .



NIG WALLER
General Assistant

HERMAN HICKMAN
Varsity Line Coach

WILLIAMS (Doc) NEWTON
Head Coach

DR. BOB WARREN
Freshman Coach

BABE WOOD
Varsity Backfield Coach

THE WOLFPACK COACHING STAFF

On your way . . . both to and from the Games you pass the

STUDENTS SUPPLY STORE, L. L. IVEY, Manager

Make it a Point to stop in for Refreshments while you're on the Campus

Y. M. C. A. Building—Northeast Corner of Riddick Stadium

Demon Deacons



RED
MAYBERRY

FRANK
KAPRIYA

BEVERLY
MOSER

JIM
DOWDY

CHAMPION Knitwear Company

ROCHESTER, N. Y.

+

ATHLETIC KNIT GOODS

+

Leading Outfitters to Colleges in
the Southern Conference, Military
Schools, High Schools and
Others.

+

Catalogs on Request

CHAMPION
Knitwear Company
Department HB — Rochester, N. Y.

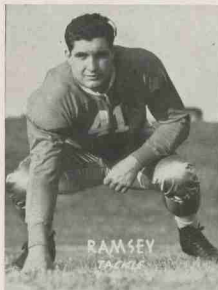
A Double Sweetheart



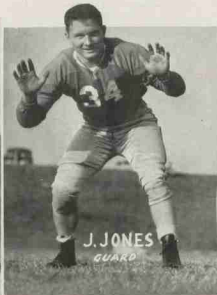
Copyright, 1939, by
P. Lorillard Co., Inc.

Flavor-Rich OLD GOLDS' blue-
ribbon tobaccos are enriched by a
special imported tobacco noted for
pleasing aroma and lasting flavor.

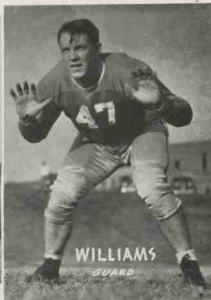
The new Flavor-Rich OLD GOLDS
NOW ON SALE EVERYWHERE



RAMSEY
TACKLE



J. JONES
GUARD



WILLIAMS
GUARD



DO YOU KNOW THESE 3 WINNING SYSTEMS?

1 THE WARNER SYSTEM



ception behind the line—often sacrificing power ahead of the ball to attain this deception. The Warner System stresses sustained advance.

Uses both the single and double wing-back system of attack, but its distinguishing characteristic is the unbalanced line. The double wing-back formation allows for great deception behind the line—often sacrificing power ahead of the ball to attain this deception. The Warner System stresses sustained advance.

2 THE ROCKNE SYSTEM



allows a man to go through without interference. The Rockne System strives to score on a perfect play from any place on the field.

Operates from a single wing-back parallelogram. Its distinguishing characteristic is a balanced line. It stresses power ahead of the ball, unlike the Warner System which often allows a man to go through without interference. The Rockne System strives to score on a perfect play from any place on the field.

3 THE Postal Telegraph SYSTEM



The Postal Telegraph System starts right at your own telephone* or at the nearest Postal Telegraph office. Its distinguishing characteristics are faster, more personalized service that saves you money.

People find it wise to employ the Postal Telegraph System when sending BIRTHDAY GREETINGS—WIRES OF CONGRATULATION—MONEY ORDERS—RESERVATIONS—SINGING TELEGRAMS—TRAVEL MESSAGES.

*Charges appear on your telephone bill.

Postal "FIRST WHEN
SECONDS COUNT!"
Telegraph

After The Game---

May We Suggest

The Greatest Hotel Value
IN *Raleigh* NORTH CAROLINA
Hotel Sir Walter

*Largest and
Finest*

330 Rooms . . .
all with tub or
shower . . .



*All Outside
Rooms*

With Bath
Beginning at \$2.50
daily

Carolina's Meeting Place

Only Hotel in Raleigh with *Circulating Ice Water*
and permanent Radios in every room ~ ~ ~
Air Conditioned Coffee Shop and Main Dining
Room with *Dinner and Dance Music* ~ ~ ~

A ROBERT MEYER HOTEL

Roland A. Mumford, Manager

Garage Adjoining

You will like our Coffee Shop . . . and Colonial Room
. . . Reasonable Prices, too

HOTEL SIR WALTER

EXTRA
MILDNESS



EXTRA
COOLNESS

EXTRA
FLAVOR



Copyright, 1940, R. J. Reynolds Tobacco Co., Winston-Salem, N. C.

WITH

SLOWER-BURNING

Camels



● In recent laboratory tests, CAMELS burned 25% slower than the average of the 15 other of the largest-selling brands tested—slower than *any* of them. That means, on the average, a smoking *plus* equal to

5 EXTRA SMOKES PER PACK!

FAST BURNING
—creates hot, flat taste in smoke... ruins delicate flavor, aroma...

SLOWBURNING—protects natural qualities that mean *mildness, thrilling taste, fragrance*... & a cooler smoke...

