

VOL. X

No. 3

N. C. STATE-
MISSISSIPPI
ISSUE

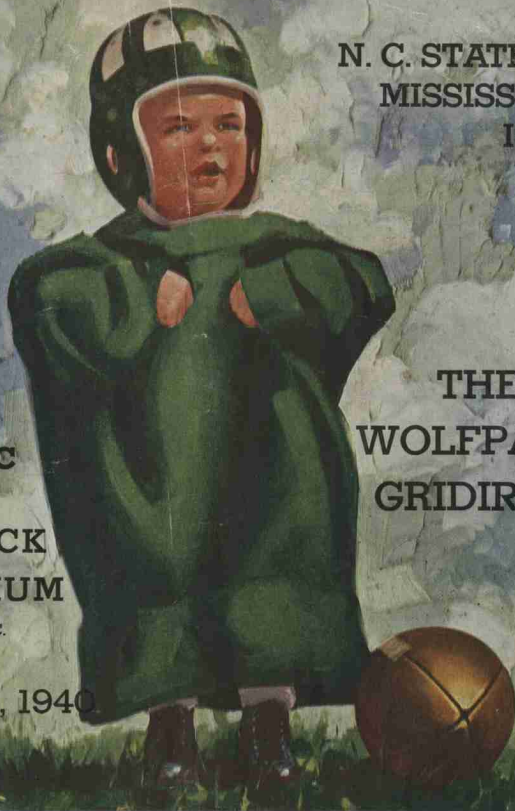
25c

THE
WOLFPACK
GRIDIRON

RIDDICK
STADIUM

RALEIGH, N.C.

Oct. 26, 1940



1960 OCTOBER 1960

SUN	MON	TUE	WED	THU	FRI	SAT
6	7	8	9	10	11	12
13	14	15	16	17	18	19
20	21	22	23	24	25	26
27	28	29	30	31		

'Ray Wolfpack!

Two Victories and Two Defeats

Still A Fine Start For A Great Team

LET'S GO!



Make The Carolina Your
Down Town Meeting
Place

~~~~~  
Headquarters For  
State College  
Functions

~~~~~  
Raleigh's Newest and Finest
~~~~~

## Hotel Carolina

Robert I. Lee, Manager

RALEIGH, NORTH CAROLINA

# THE WOLFPACK GRIDIRON

## N. C. STATE - CAROLINA ISSUE

Published five times annually for each N. C. State College home football game by the Sports Publicity Bureau of North Carolina State College, Wade Iron, Publisher. \$1.00 per year, 25c per copy. National Advertising Representative: Don Spencer Company, Inc., 271 Madison Avenue, New York, N. Y.

Volume X

Riddick Stadium, Raleigh, N. C., October 26, 1940

Number 3

### NORTH CAROLINA STATE COLLEGE ATHLETIC COUNCIL

PROF. H. A. FISHER, *Chairman*  
DR. A. J. WILSON, *Secretary*  
DR. I. O. SCHAUB  
DR. R. L. STUCKEY  
DR. LODWICK HARTLEY

D. W. SEIFERT  
W. H. SULLIVAN  
A. G. FLOYD  
DAVID CLARK  
JOHN A. SEXTON

PAUL LEHMAN  
ARNOLD KROCHMAL  
TOM ROWLAND  
JOHN BARR  
JACK HUCKABEE

### FOOTBALL STAFF

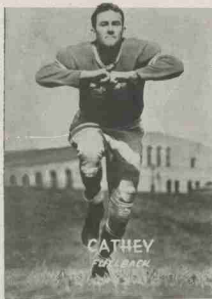
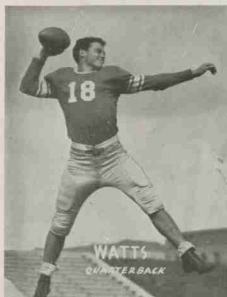
WILLIAMS (DOC) NEWTON, *Head Coach*  
HERMAN HICKMAN, *Line Coach*  
WALTER A. (BABE) WOOD, *Backfield Coach*  
JOHNNY F. MILLER, *Head, Department of Physical Education and Athletics*

JOHN L. VONGLAHN, *Business Manager of Athletics*  
DR. R. S. (BOB) WARREN, *Freshman Coach*  
E. M. (NIG) WALLER, *General Assistant*  
DR. G. B. POWELL, *Trainer*

WOLFPACK'S DOUBLE-TROUBLE last week in the sensational 7-13 loss to Carolina were Dick (Offense) Watts and Bob (Defense) Cathey.

Scribes and sportscasters covering the game voted Dick the "most valuable" N. C. State starter in the first half "because of his play-calling" and Bill (Ambassador Theater) Enloe, who sent to Hollywood for an autographed football for the first-half winner, was so impressed by Bob's performance that he gave him a gold football.

Commented Donor Enloe: "The selection of Watts was fine, but we should have had an award, too, for the most valuable boy in the second half. We didn't, so I'm giving Cathey a souvenir anyway."



Dick's play-calling fooled the grandstanders, the press boxers and the Tar Heels to such perfection that Coach Williams (Doc) Newton's Staters were able to rack up their first touchdown against Carolina since he began coaching here.

Cathey's 60-minute performance (only one of the game) sparked State to its closest contest with the Tar Heels since 1934. While defense is associated with Cathey's reward, it was he who set the blocking pace for the Wolfpack, thereby becoming a leading contender for Southern Conference blocking honors.



COLONEL JOHN W. HARRELSON, N. C. State College Dean of Administration

# SIGNALS & PENALTIES

BY - JOHNNY

## "CALL FOR PHILIP MORRIS"



Holding. (Penalty—by offense, 15 yards; by defense, 5 yards.)

Interference with forward pass, pass touching ineligible player, or "screening" pass receiver (17 penalty on offense, when interference occurs beyond line of scrimmage, 15 yards and line of down; on or behind line of scrimmage, loss of down only. Interference by defense, ball to offense on spot of foul as first down.)



Time out.

Offside or violation of kick-off formation (Penalty, 5 yards)



Penalty re-found incomplete pass, missed field goal or conversion, both sides offside, etc.



Delay of game or extra time-outs (Penalty, 5 yards.)



Crawling or pushing, 5 yds.; helping ball carrier, 15 yards.



Illegal forward pass.

Safety.



Score—touchdown, field goal, or conversion.

Player illegally in motion (Penalty, 5 yards. If from shift or huddle, 15 yards.)



Unnecessary roughness, illegal defensive use of the hands, clipping, running into or roughing the kicker (Penalty, 15 yards.)



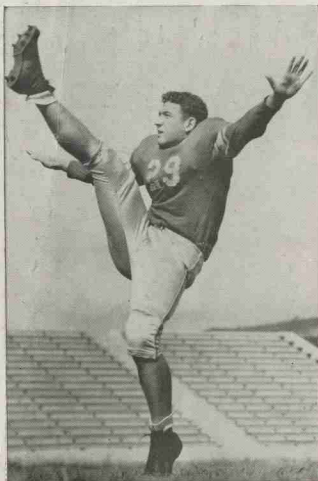
Among Fine Watches No Name is  
More Respected Than LONGINES

We invite your inspection of our  
complete showing of the smart  
new 1941 Longines Watches . . .

SOLD IN RALEIGH BY

**NEIMAN'S**

"Dependable Jewelers"



JACK HUCKABEE



DICK EAST

**CHAMPION  
Knitwear Company**

ROCHESTER, N. Y.

+

ATHLETIC KNIT GOODS

+

Leading Outfitters to Colleges in  
the Southern Conference, Military  
Schools, High Schools and  
Others.

+

Catalogs on Request

**CHAMPION  
Knitwear Company**

Department HB — Rochester, N. Y.

DRINK  
*Coca-Cola*

ALWAYS ON  
THE  
REFRESHING  
SIDE



Feel FRESH!

DRINK

**ORANGE--CRUSH**

CARBONATED BEVERAGE

—An All Season Choice

**NuGRAPE**

SODA

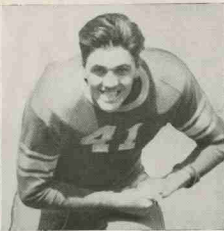
Raleigh Orange-Crush Bottling Co.

Phone 2-1246

221 East Davie Street



EARL STEWART



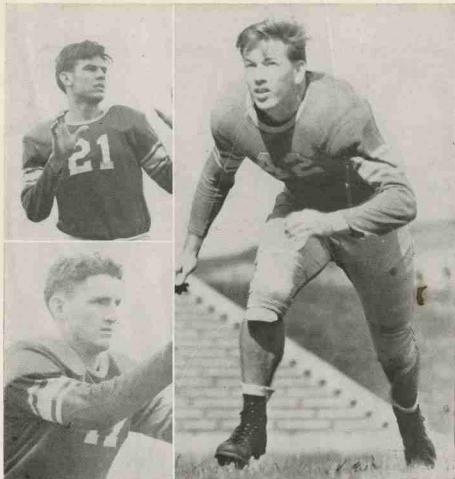
NORM WIGGIN



DUD ROBBINS







Top left  
MARION STILWELL

Bottom left  
PHIL AVERY

Right  
JOHN BARR



## ... better go **GREYHOUND**

Long runs are fine on the football field, but mighty tiring when they're made in the family car. Next time, take a tip from the boys on the team . . . step into a comfortable Greyhound Super-Coach and enjoy yourself! Watch the miles roll by as you relax in a deep-cushioned chair . . . and watch the savings roll back into your budget! For fun, for less, go Greyhound!

For complete information, phone or visit nearest Greyhound Terminal



**GREYHOUND**  
*Liner*

# Wolfpack Co-Captains



Center Howell Stroup (left) and Fullback Pat Fehley

After the Game—  
**RALEIGH'S FINEST  
THEATERS**

WHERE ENTERTAINMENT COSTS  
SO LITTLE

## AMBASSADOR

Sunday-Monday-Tuesday  
Thrills—Action—Romance!

WALLACE BERRY  
in

**"WYOMING"**

with Leo Carrillo - Ann Rutherford

4 Days Beginning Wednesday  
Alfred Hitchcock's

**'FOREIGN CORRESPONDENT'**

with JOEL McCREA - LORAIN DAY  
Herbert Marshall - Robt. Benchley

Attend Our Gala Hallowe'en Midnight Show  
Thursday Night—Doors Open 11:45

**'DOWN ARGENTINE WAY'**

In Color  
with DON AMECHE - BETTY GRABLE

## CAPITOL

Monday-Tuesday

Funny Enough To Make a Ghost Laugh!

Bob Hope - Paulette Goddard

In

**'THE GHOST BREAKERS'**

with

Richard Carlson - Paul Lukas

Thursday Only!  
On the Stage  
**'TOP OF THE  
WORLD  
REVUE'**

20—People—20  
Girls—Singing  
Comedy

Also Gala Hal-  
lowe'en Late  
Show 11:45 p.m.  
**BIG STAGE  
SHOW**  
Fun for All!

## STATE

STARTS TODAY  
For Limited Engagement  
The Sensational Picture  
Acclaimed by the Nation

**'The Ramparts  
We Watch'**

Featuring the Nazi  
Terror Films Banned In  
Pennsylvania

**'Baptism  
of Fire'**

## PALACE

HELD OVER!

Sun.-Mon.-Tues.

**'Knut Rockne—  
All American'**

with PAT O'BRIEN

Friday-Saturday

Those 'East Side,' 'Dead  
End' Kids in

**'THAT GANG OF MINE'**

Bobby Jordan—Lee Garcey

The official watch  
for timing all  
N. C. STATE  
FOOTBALL GAMES IS  
*Longines*

THE WORLD'S MOST HONORED WATCH

Longines Watches, selected as official watch by the 1940 Olympic Committee, is also official watch for timing the football games for more than 100 leading colleges; timed 20 of the leading track meets of 1940 and the major intercollegiate basketball games. Longines is also official watch for the National Professional Football League and was worn by all umpires officiating at American and National League baseball games of 1940 including the World Series. Among the 104 national and international sports and contest bodies for which Longines is official watch are National Aeronautic Association, American Automobile Association, National Power Boat Association, International Federation du Ski, American Lawn Tennis Association, and U. S. Polo Association.

The world-leadership of Longines Watches is further attested by 10 world's fair grand prizes, 28 gold medals and more honors for accuracy than any other timepiece. Truly Longines is . . . the world's most honored watch.

Watches of accuracy  
and elegance by Longines



The skill, experience and workmanship necessary for the construction of Longines Watches for precision timing, aviation, and navigation is reflected in the greater accuracy of every Longines Watch at any price. Longines-Wittnauer jewelers show Longines personal watches of distinction priced \$40 upward; Wittnauer watches from \$24.75.

LONGINES-WITTNAUER WATCH CO., Inc.  
580 FIFTH AVENUE, NEW YORK, N. Y.



COACH WILLIAMS (DOC) NEWTON  
N. C. STATE



RUM and MAPLE TOBACCO CORP.'S  
*Original*  
**RUM and MAPLE** BLEND 53  
PIPE MIXTURE and CIGARETTE

*It pleases all  
pipe smokers*

Now every smoker can enjoy the thrilling taste and aroma of Original Rum & Maple Blend 53 Pipe Mixture and Cigarette—both infused with Jamaica Rum and Vermont Maple Sugar. Be sure you get the Original. Guard against imitators who print "Rum & Maple" on the package but not as part of their brand name.

LOOK FOR  
"Blend 53" on Pipe Mixture  
"Blend 53C" on Cigarettes  
and  
RUM & MAPLE TOBACCO CORP.  
on all packages

*Named for  
Flavor*



25c  
was 70c



15c  
was 40c



Price Reduced  
NOW  
20 for 15c



PROF. H. A. FISHER  
Chairman of  
Athletic Council



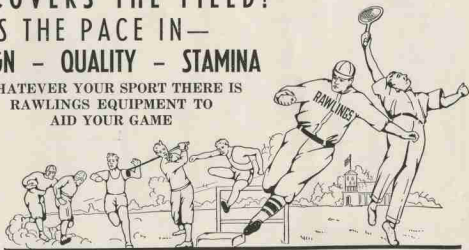
J. L. VONGLAHN  
Business Manager  
of Athletics



J. F. MILLER  
Head, Department of Physical  
Education and Athletics

**RAWLINGS**  
**COVERS THE FIELD!**  
**SETS THE PACE IN—**  
**DESIGN - QUALITY - STAMINA**

WHATEVER YOUR SPORT THERE IS  
RAWLINGS EQUIPMENT TO  
AID YOUR GAME



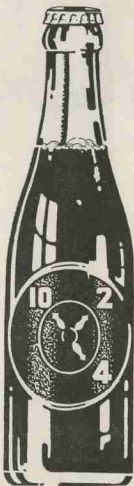
AVAILABLE THROUGH  
JOHNSON-LAMBE CO. - - - RALEIGH

*Rawlings*

MANUFACTURING COMPANY  
ST. LOUIS MISSOURI

BEST WISHES  
WOLFPACK

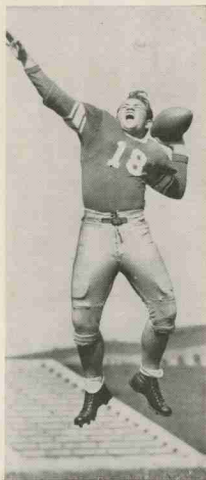
G  
O  
O  
D



H  
E  
A  
L  
T  
H



RALPH BURT



PEANUT DOAK



# TEAMWORK . . . every man doing the right thing at

the right time—makes a football team click.

When you drive into our service station, OUR teamwork starts to click—to give you complete, prompt, courteous, and efficient service.

For better service drive in to

## TIRE SALES & SERVICE COMPANY, Inc.

GOODYEAR TIRES

“One Stop Super Service Station”

EXIDE BATTERIES

Hillsboro and Harrington Sts.

Phone 7571

Raleigh, N. C.

## North Carolina State College Squad

| Player            | Pos. | Age | Wgt. | Hgt. | Yrs. | on var. | Home Town          | Player               | Pos. | Age | Wgt. | Hgt. | Yrs. | on var. | Home Town          |
|-------------------|------|-----|------|------|------|---------|--------------------|----------------------|------|-----|------|------|------|---------|--------------------|
| Phil Avery        | E    | 20  | 181  | 6    | 2    |         | Morganton, N. C.   | Jimmy Allen          | C    | 19  | 176  | 5-10 | 1    |         | Raleigh, N. C.     |
| *Wade Brown       | E    | 19  | 199  | 6-3  | 2    |         | Rockwell, N. C.    | Cutie Carter         | C    | 22  | 162  | 5-10 | 2    |         | Raleigh, N. C.     |
| Monte Crawford    | E    | 22  | 180  | 5-11 | 3    |         | Graham, N. C.      | Edgar Gibson         | C    | 18  | 169  | 6    | 1    |         | Greenville, N. C.  |
| *Frank Owens      | E    | 20  | 186  | 6-3  | 2    |         | Charlotte, N. C.   | Walt Green           | C    | 19  | 172  | 6    | 1    |         | Coleeemee, N. C.   |
| Marion Stilwell   | E    | 19  | 172  | 6-2  | 1    |         | Thomasville, N. C. | Howell Stroup (C.C.) | C    | 21  | 201  | 6-1  | 3    |         | Cherryville, N. C. |
| Tom Turner        | E    | 18  | 174  | 6    | 1    |         | Raleigh, N. C.     | Jim Barber           | B    | 19  | 158  | 5-10 | 1    |         | Hamlet, N. C.      |
| S. K. Wilson, Jr. | E    | 18  | 183  | 5-11 | 1    |         | Guilford, N. C.    | *Bob Cathey          | B    | 22  | 174  | 5-10 | 2    |         | Charlotte, N. C.   |
| Peter Boltrek     | T    | 19  | 216  | 6-1  | 1    |         | Averne, N. Y.      | Foy Clark            | B    | 20  | 160  | 6    | 1    |         | Mt. Airy, N. C.    |
| John Edmiston     | T    | 24  | 228  | 5-10 | 1    |         | Mooreville, N. C.  | Doug Dickerson       | B    | 20  | 162  | 5-11 | 1    |         | Greensboro, N. C.  |
| Lonnie Harris     | T    | 20  | 207  | 6    | 1    |         | Henderson, N. C.   | Peanut Donk          | B    | 19  | 167  | 5-6  | 1    |         | Raleigh, N. C.     |
| *Woody Jones      | T    | 19  | 194  | 6-1  | 2    |         | Roxboro, N. C.     | *Dick (Magic) East   | B    | 22  | 166  | 6    | 2    |         | Raleigh, N. C.     |
| Milburn Long      | T    | 23  | 191  | 6    | 1    |         | Athens, Tenn.      | *Pat Fehley (C.C.)   | B    | 22  | 181  | 5-10 | 3    |         | Easton, Pa.        |
| *Curtis Ramsey    | T    | 21  | 223  | 6-2  | 2    |         | Crumpler, W. Va.   | Hobart Ferree        | B    | 21  | 167  | 5-11 | 1    |         | High Point, N. C.  |
| *Bill Windley     | T    | 22  | 198  | 5-11 | 2    |         | Pantego, N. C.     | Cecil Fry            | B    | 19  | 158  | 5-8  | 1    |         | Raleigh, N. C.     |
| *John Barr        | G    | 22  | 180  | 5-11 | 2    |         | Charlotte, N. C.   | Jardine Gibson       | B    | 20  | 206  | 6    | 1    |         | Gastonia, N. C.    |
| *Ralph Burt       | G    | 21  | 207  | 6    | 3    |         | Raleigh, N. C.     | Sonny Gilbert        | B    | 21  | 176  | 5-8  | 1    |         | Mt. Airy, N. C.    |
| Dink Caton        | G    | 20  | 182  | 5-11 | 1    |         | Concord, N. C.     | *Jack Huckabee       | B    | 20  | 181  | 5-11 | 2    |         | Charlotte, N. C.   |
| Chick Donk, Jr.   | G    | 21  | 171  | 5-8  | 1    |         | Raleigh, N. C.     | Reuben Morgan        | B    | 22  | 197  | 6    | 2    |         | Raleigh, N. C.     |
| Bob Hedler        | G    | 20  | 182  | 5-10 | 1    |         | Philadelphia, Pa.  | Dud Robbins          | B    | 19  | 175  | 5-10 | 1    |         | Burgaw, N. C.      |
| *J. D. Jones      | G    | 21  | 174  | 5-10 | 2    |         | Asheville, N. C.   | Jack Singer          | B    | 20  | 146  | 5-0  | 1    |         | New York, N. Y.    |
| Charley Riddle    | G    | 20  | 182  | 5-0  | 1    |         | Sanford, N. C.     | *Earl Stewart        | B    | 20  | 177  | 6    | 2    |         | Roxboro, N. C.     |
| Mac Williams      | G    | 20  | 187  | 5-10 | 1    |         | Raleigh, N. C.     | *Dick Watts          | B    | 20  | 171  | 6    | 2    |         | Baldwin, N. Y.     |
|                   |      |     |      |      |      |         |                    | Norm Wiggin          | B    | 21  | 198  | 6    | 1    |         | Haverford, Pa.     |

\*—Denotes Lettermen.

DO YOU SMOKE THE CIGARETTE THAT

*Satisfies*

THAT'S COOLER... BETTER-TASTING  
DEFINITELY MILDER

Mississippi State

LE Elrod 20    LT Tripson 22    LG Cobern 29    C Price 11    RG M'Dow 43    RT Arnold 16    RE Moore 27

QB Dees 9

LHB Johnson 34

RHB Craig 5

FB Tullios 39

SQUAD LIST

|                 |                 |                 |
|-----------------|-----------------|-----------------|
| No.             | No.             | No.             |
| 2 Bishop, b     | 18 Black, b     | 33 Wohner, b    |
| 3 Neal, b       | 19 Alford, t    | 34 Johnson, b   |
| 4 Yancey, b     | 20 Elrod, e     | 35 Dreher, t    |
| 5 Craig, b      | 21 Jefferson, b | 37 Ray, g       |
| 6 Griffin, e    | 22 Tripson, t   | 38 Ford, b      |
| 8 Ray, c        | 23 Patrick, g   | 39 Tullios, b   |
| 9 Dees, b       | 24 Campbell, b  | 41 Saunders, e  |
| 10 Friedrich, e | 25 Jones, t     | 43 McDowell, g  |
| 11 Price, c     | 26 Moore, e     | 45 Patterson, e |
| 12 Harrison, e  | 28 Bruce, b     | 46 Conway, e    |
| 14 Grove, g     | 29 Cobern, g    | 47 Montes, g    |
| 15 Bethune, b   | 30 McDaniel, b  | 48 Carpi, g     |
| 16 Arnold, t    | 31 McLemore, c  | 50 Yarnado, e   |
| 17 White, t     |                 |                 |

OFFICIALS

Referee ..... J. D. Thomason, Georgia  
Umpire ..... Bob Collier, Wake Forest

N. C. State

LE Stillew W. Jones 49    LT W. Jones 30    LG Catton 19    C Stroup 28    RG Burt 43    RT Ramsey 41    RE Owens 45

QB Cathey 25

LHB Watts 29

RHB Huckabee 18

FB Fehley 24

SQUAD LIST

|                 |                 |                |
|-----------------|-----------------|----------------|
| No.             | No.             | No.            |
| 11 Barber, b    | 26 Barr, g      | 40 Fry, b      |
| 12 Dickerson, b | 27 Robbins, b   | 41 Ramsey, t   |
| 14 P. Duke, b   | 28 Stroup, e    | 42 C. Duke, g  |
| 15 Carter, c    | 29 Watts, b     | 43 Burt, g     |
| 16 Crawford, e  | 30 W. Jones, t  | 44 Brown, e    |
| 17 Ferree, b    | 31 Stewart, b   | 45 Owens, e    |
| 18 Huckabee, b  | 32 Windley, t   | 46 Riddle, g   |
| 19 Catton, g    | 33 Long, t      | 47 Williams, g |
| 20 E. Gibson, e | 34 J. Jones, g  | 48 Wiggins, b  |
| 21 Allen, e     | 35 Avery, e     | 49 Stillew, e  |
| 22 Gilbert, b   | 36 J. Gibson, b | 50 Edmiston, t |
| 23 Morgan, e    | 37 Singer, b    | 53 Hedler, g   |
| 24 Fehley, b    | 38 East, b      |                |
| 25 Cathey, b    | 39 Holtrek, t   |                |

OFFICIALS

Head Linesman ..... Forrest Heath, North Carolina  
Field Judge ..... Major Romey, V. M. I.



# Mississippi State Squad

| Player             | Pos. | Age | Wgt. | Hgt. | Yrs. on var. | Home Town              | Player            | Pos. | Age | Wgt. | Hgt. | Yrs. on var. | Home Town           |
|--------------------|------|-----|------|------|--------------|------------------------|-------------------|------|-----|------|------|--------------|---------------------|
| Epstace Conway     | E    | 19  | 175  | 6-1  | 1            | Vicksburg, Miss.       | Ben Griffin       | C    | 23  | 178  | 6-2  | 2            | Tampa, Fla.         |
| Buddy Elrod        | E    | 21  | 186  | 6-1  | 3            | Memphis, Tenn.         | James McLemore    | C    | 21  | 188  | 5-11 | 1            | Huntington, Tenn.   |
| Ray Fridrich       | E    | 22  | 182  | 6-2  | 3            | Gallion, Ohio          | Robert Price      | C    | 21  | 182  | 6    | 3            | Covington, Tenn.    |
| Granville Harrison | E    | 23  | 198  | 6-3  | 4            | Ashland, Miss.         | Emmitt Ray        | C    | 21  | 192  | 6    | 2            | Hackleburg, Ala.    |
| Arnold Moore       | E    | 24  | 205  | 6-3  | 3            | Bellenfontaine, Miss.  | Frank Bethune     | B    | 19  | 172  | 5-8  | 1            | Jackson, Miss.      |
| Robert Patterson   | E    | 19  | 182  | 6-1  | 1            | Clarksdale, Miss.      | John Black        | B    | 19  | 186  | 5-11 | 1            | Philadelphia, Miss. |
| Charley Saunders   | E    | 20  | 180  | 6-1  | 2            | Memphis, Tenn.         | Clayborne Bishop  | B    | 19  | 175  | 5-11 | 1            | Lumberton, Miss.    |
| George Varnado     | E    | 20  | 178  | 6    | 1            | Magnolia, Miss.        | William Bruce     | B    | 22  | 177  | 6-2  | 2            | Columbus, Miss.     |
| John Alford        | T    | 23  | 197  | 6-2  | 3            | Crystal Springs, Miss. | Marvin Campbell   | B    | 23  | 176  | 5-11 | 3            | Columbus, Miss.     |
| William Arnold     | T    | 20  | 194  | 6    | 2            | Hattiesburg, Miss.     | Walter Craig      | B    | 29  | 174  | 6-1  | 2            | Pulaski, Miss.      |
| Spike Dreher       | T    | 20  | 192  | 6-1  | 1            | Imboden, Ark.          | Wilbur Deem       | B    | 21  | 166  | 5-10 | 2            | Pascagoula, Miss.   |
| Homer Jones        | T    | 21  | 187  | 6-1  | 2            | Greenville, Miss.      | Robert Ford       | B    | 22  | 151  | 5-10 | 3            | Hazelhurst, Miss.   |
| John Tripson       | T    | 22  | 202  | 6-3  | 3            | Mission, Texas         | William Jefferson | B    | 22  | 196  | 6-2  | 3            | Iverson, Miss.      |
| Gladney White      | T    | 19  | 198  | 6-2  | 1            | Starkville, Miss.      | Harvey Johnson    | B    | 23  | 172  | 5-11 | 3            | Sheffield, Ala.     |
| Sam Carpi          | G    | 25  | 194  | 5-11 | 3            | Syracuse, N. Y.        | Roy McDaniel      | B    | 20  | 175  | 5-11 | 2            | Union City, Tenn.   |
| Hunter Corbers (C) | G    | 21  | 184  | 5-11 | 3            | Strakville, Miss.      | F. L. Neal        | B    | 19  | 180  | 5-11 | 1            | Picoyune, Miss.     |
| Harold Grove       | G    | 20  | 181  | 5-11 | 2            | Hattiesburg, Miss.     | Hillard Thorpe    | B    | 19  | 175  | 5-8  | 1            | Tiptonville, Tenn.  |
| Guy McDowell       | G    | 21  | 186  | 6    | 3            | Columbus, Miss.        | Toxie Tullos      | B    | 24  | 176  | 5-11 | 3            | Columbus, Miss.     |
| Robert Meates      | G    | 21  | 180  | 5-11 | 2            | Pascagoula, Miss.      | Collins Wohnner   | B    | 20  | 167  | 5-11 | 2            | Cannton, Miss.      |
| Jim Patrick        | G    | 21  | 182  | 5-11 | 2            | Jackson, Miss.         | Charles Yancey    | B    | 17  | 176  | 5-11 | 1            | Ferriday, La.       |
| Raymond Ray        | G    | 19  | 188  | 6    | 1            | Evansville, Ind.       |                   |      |     |      |      |              |                     |

## DO YOU KNOW THESE 3 WINNING SYSTEMS?

### / THE WARNER SYSTEM



ception behind the line—often sacrificing power ahead of the ball to attain this deception. The Warner System stresses sustained advance.

Uses both the single and double wing-back system of attack, but its distinguishing characteristic is the unbalanced line. The double wing-back formation allows for great deception behind the line—often sacrificing power ahead of the ball to attain this deception. The Warner System stresses sustained advance.

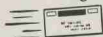
### 2 THE ROCKNE SYSTEM



allows a man to go through without interference. The Rockne System strives to score on a perfect play from any place on the field.

Operates from a single wing-back parallelgram. Its distinguishing characteristic is a balanced line. It stresses power ahead of the ball, unlike the Warner System which often allows a man to go through without interference. The Rockne System strives to score on a perfect play from any place on the field.

### 3 THE Postal Telegraph SYSTEM



The Postal Telegraph System starts right at your own telephone\* or at the nearest Postal Telegraph office. Its distinguishing characteristics are faster, more personalized service that saves you money.

People find it wise to employ the Postal Telegraph System when sending BIRTHDAY GREETINGS—WIRES OF CONGRATULATION—MONEY ORDERS—RESERVATIONS—SINGING TELEGRAMS—TRAVEL MESSAGES.

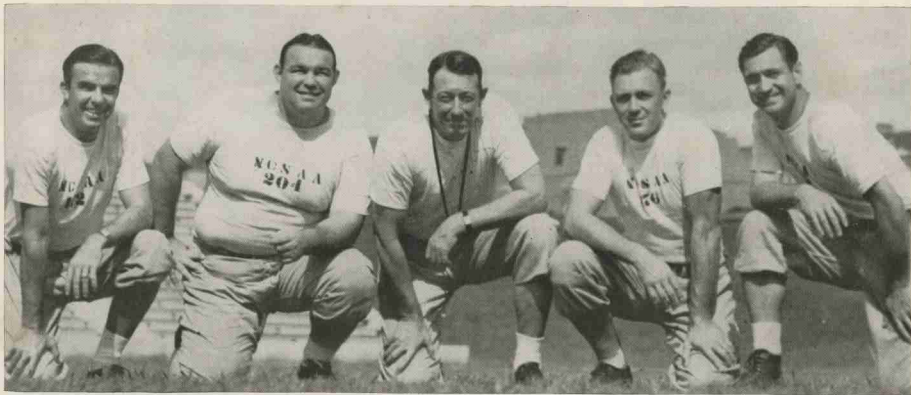
\*Charges appear on your telephone bill.

# Postal Telegraph

"FIRST WHEN SECONDS COUNT!"

---

L. L. IVEY is a member of The Wolfpack Club and is a supporter of . . .



**NIG WALLER**  
*General Assistant*

**HERMAN HICKMAN**  
*Varsity Line Coach*

**WILLIAMS (Doc) NEWTON**  
*Head Coach*

**DR. BOB WARREN**  
*Freshman Coach*

**BABE WOOD**  
*Varsity Backfield Coach*

### **THE WOLFPACK COACHING STAFF**

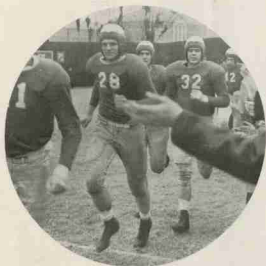
On your way . . . both to and from the Games you pass the

**STUDENTS SUPPLY STORE, L. L. IVEY, Manager**

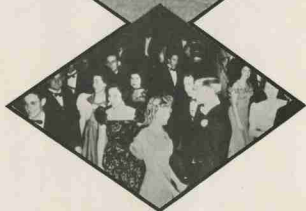
Make it a Point to stop in for Refreshments while you're on the Campus

Y. M. C. A. Building—Northeast Corner of Riddick Stadium

---



THE COUNTRY BOYS GET A HAND



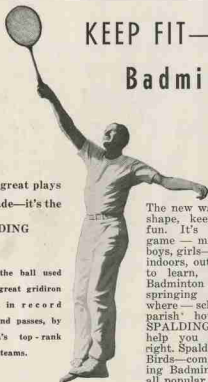
STUDENT LIFE AT NORTH CAROLINA STATE

## KEEP FIT—play Badminton

When great plays  
are made—it's the

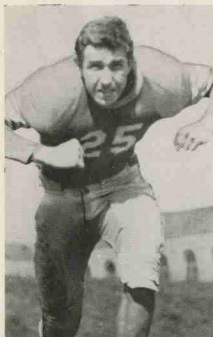
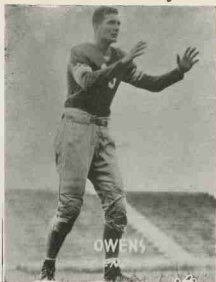
**SPALDING**  
J5-V1

Here's the ball used  
in the great gridiron  
classics, in record  
punts and passes, by  
America's top - rank  
college teams.



The new way to get in  
shape, keep fit, have  
fun. It's everybody's  
game — men, women,  
boys, girls—year round,  
indoors, outdoors. Easy  
to learn, inexpensive.  
Badminton clubs are  
springing up every-  
where — schools, gyms,  
parish' houses. Your  
SPALDING dealer will  
help you get started  
right. Spalding Rackets,  
Birds—complete Spald-  
ing Badminton Sets at  
all popular prices.

*A. G. Spalding & Bros.*  
DIVISION OF SPALDING SALES CORPORATION  
Athletic Equipment



HOBART FERREE

## Pointer Cigar Co.

337 S. Wilmington St.

Phone 5238

## A Double Sweetheart



Copyright, 1935, by  
P. Lorillard Co., Inc.

Flavor-Rich OLD GOLDS' blue-ribbon tobaccos are enriched by a special imported tobacco noted for pleasing aroma and lasting flavor.



The new Flavor-Rich OLD GOLDS  
NOW ON SALE EVERYWHERE



### WESTERN UNION

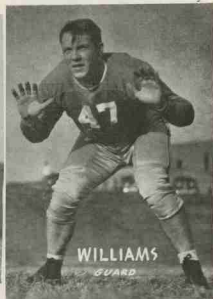
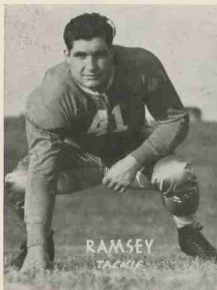
Announces a New Service on  
FOOTBALL TICKET ORDERS

Your local Western Union office will accept orders for tickets for games in Riddick Stadium and have the tickets held at the Western Union office in Raleigh pending your arrival there on the day of the game.

Next Games in Riddick Stadium  
Nov. 2—Furman (night)  
Nov. 9—Wake Forest

Games Away From Home  
Nov. 16—The Citadel, Charleston  
Nov. 23—Duke, Durham

WESTERN UNION



To PREVENT SPILLS LIKE *These*



## NORTH CAROLINA STATE RELIES ON SEAL-O-SAN

Give a big hand to Seal-O-San this fall when you see those spectacular basketball games in Frank Thompson Gymnasium. For with a 100% non-slippery finish on the floor, you see *faster* footwork . . . *speedier* dribbling . . . *more confident* shooting.

Today, more than 5000 schools rely on slip-proof Seal-O-San for help in turning out winning teams.

Coaches and school officials are invited to write for complete details.

# SEAL-O-SAN

NON-SLIPPERY SEAL & FINISH FOR GYMNASIUMS

MADE EXCLUSIVELY BY

**The HUNTINGTON LABORATORIES Inc**

DENVER • HUNTINGTON INDIANA • TORONTO

## Military at North Carolina State



COLONEL T. W. BROWN, U. S. ARMY



THE COLORS PASS IN REVIEW



MAJOR WALTER B. COCHRAN  
U. S. Army



NOW THAT YOU'RE IN THE RIGHT SPIRIT  
LET'S MAKE A NIGHT OF IT  
AFTER THE GAME

**CAROLINA CLUB** At Carolina Pines  
Clubhouse 2 Miles  
South of Raleigh —  
Route 15A — Fayetteville Road

**JACK WARDLAW'S ROLLING RHYTHM**

WITH

**BUDDY DUNN, M. C.**

**JOANNE LEAUX, Songstress**

A NEW FLOOR SHOW EACH SATURDAY

**75c Each, Plus Tax—For Reservations Phone 9334**

No Cover, Minimum, Table or Corkage Charge

**STAUDT'S BUTTERNUT  
BREAD**

SERVED HERE

**STAUDT'S**

—Since 1896—



AYE, AYE, SIR. . . . A "CRACK" COMPANY PASSES IN  
REVIEW DURING MOCK DRILL



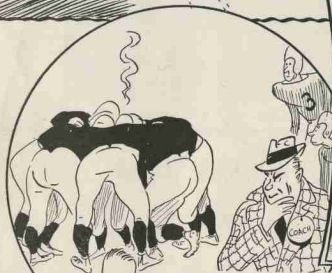
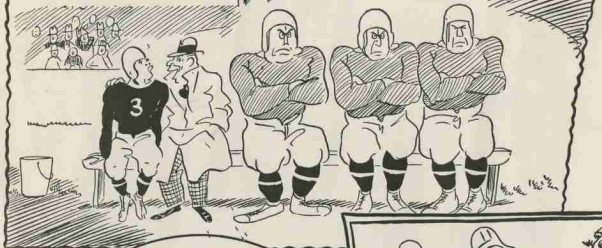
PART OF FRESHMAN QUADRANGLE AT N. C. STATE

## CONCESSIONS ON SALE IN RIDDICK STADIUM

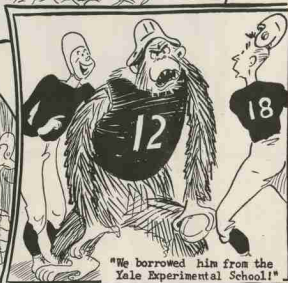
|                                                                       |     |
|-----------------------------------------------------------------------|-----|
| CIGARETTES .....                                                      | 20c |
| CAMELS, CHESTERFIELD, OLD GOLD, PHILIP MORRIS,<br>RUM AND MAPLE ..... |     |
| RUM AND MAPLE SMOKING TOBACCO .....                                   | 25c |
| COCA-COLA .....                                                       | 10c |
| DR. PEPPER .....                                                      | 10c |
| ORANGE CRUSH AND FRUIT DRINKS .....                                   | 10c |
| BIRELEY'S ORANGE ADE .....                                            | 10c |
| NEHI FRUIT DRINKS .....                                               | 10c |
| 7-UP .....                                                            | 10c |
| COFFEE .....                                                          | 10c |
| HOT DOGS WITH STAUDT'S ROLLS .....                                    | 10c |
| PINE STATE AND WHITE'S ICE CREAM .....                                | 10c |
| PEANUTS .....                                                         | 10c |
| CANDIES .....                                                         | 5c  |



"I'm using dummies to  
break down their morale!"



"Hi! Smoking again!"



"We borrowed him from the  
Yale Experimental School!"

*P. P. [Signature]*



"We're supposed to play Penn State, not State Pen!"



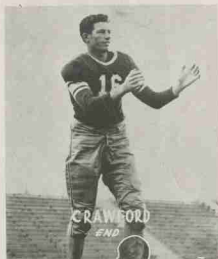
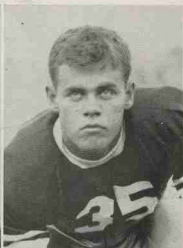


Left  
CUTIE CARTER

Right  
RUBE MORGAN

Top Right  
WADE BROWN

Bottom  
WOODY JONES

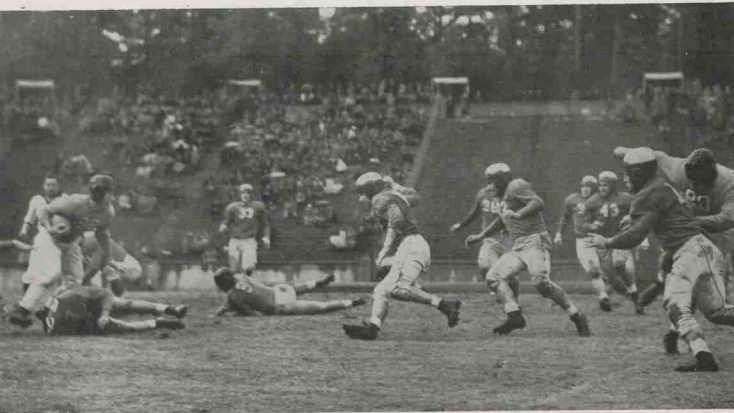


FOR N. C. STATE --- WIN OR LOSE!

*BLAIN CHAPMAN, '33*

STORR ENGRAVING CO.

RALEIGH



THE WOLFPACK CLOSES IN ON CAROLINA'S STIRNWEISS IN 1939



FEHLEY GAINS AROUND CLEMSON'S END

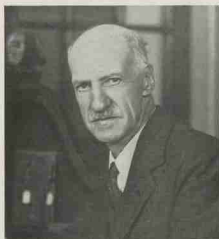


THE BAND AT EASE WHILE MAJOR KUTCHINSKI TALKS THINGS OVER

## North Carolina State College Deans



**I. O. SCHAUB**  
Dean, School of Agriculture



**THOMAS NELSON**  
Dean, Textile School



**BLAKE R. VAN LEER**  
Dean, School of Engineering



**T. E. BROWNE**  
Dean, Division of Teacher Training



**E. L. CLOYD**  
Dean of Students



**B. F. BROWN**  
Dean, Basic Division

After The Game---

May We Suggest

The Greatest Hotel Value  
IN Raleigh NORTH CAROLINA  
Hotel Sir Walter

Largest and  
Finest

350 Rooms . . .  
all with tub or  
shower . . .



All Outside  
Rooms

With Bath . . .  
Beginning at \$2.50  
daily . . .

Carolina's Meeting Place

Only Hotel in Raleigh with *Circulating Ice Water*  
and permanent Radios in every room ~ ~ ~  
Air Conditioned Coffee Shop and Main Dining  
Room with *Dinner and Dance Music* ~ ~ ~

A ROBERT MEYER HOTEL

Roland A. Mumford, Manager

Garage Adjoining

You will like our Coffee Shop . . . and Colonial Room  
. . . Reasonable Prices, too

**HOTEL SIR WALTER**

EXTRA  
MILDNESS



EXTRA  
FLAVOR

EXTRA  
COOLNESS



Copyright, 1940, H. J. Reynolds Tobacco Co., Winston-Salem, N. C.

WITH

SLOWER-BURNING

Camels



● In recent laboratory tests, CAMELS burned 25% slower than the average of the 15 other of the largest-selling brands tested—slower than *any* of them. That means, on the average, a smoking *plus* equal to

5 EXTRA SMOKES PER PACK!

**FAST BURNING**  
—creates hot flat taste in smoke... ruins delicate flavor, aroma...

**SLOW BURNING**—protects natural qualities that mean mildness, thrilling taste, fragrance... a cooler smoke...

