

# *The Wolfpack Gridiron*

N. C. STATE vs. DUKE UNIVERSITY



25c

Golden Anniversary Year

# QUESTIONNAIRE on CURRENT HISTORY

?

What Did Chamberlain Say at Munich?

APPEASE 'EM!

What Did Doc Newton Say to the  
Wolfpack Before this Game?

SLAY 'EM!

What Do All Experienced Travelers  
and Visitors to Raleigh Say?

STOP AT

## HOTEL CAROLINA

RALEIGH, N. C.

250 Complete Rooms—Each with Bath  
GOOD FOOD AT POPULAR PRICES

ROBERT I. LEE, *Manager*

# The Wolfpack Gridiron

## OFFICIAL ... FOOTBALL ... PROGRAM

Riddick Stadium, Nov. 25, 1939 - Raleigh, N. C.

THE WOLFPACK GRIDIRON is published for all N. C. State home football games by the Sports Publicity Bureau. Address all communications to Wade Isen, State College, Raleigh, N. C.

### N. C. STATE ATHLETIC COMMITTEE

PROF. H. A. FISHER, <i>Chairman</i>	DR. A. J. WILSON	JOHN W. SEXTON	D. W. SEBERT	CHARLES HUNTER
DEAN I. O. SCHAUB	DR. R. F. POOLE	DAVID CLARK	ERNE DURIAM	ROLLINS SEYER
DR. R. L. SPOCKEY	W. H. SULLIVAN	A. G. FLOYD	TONY DIYESO	CUTIE CARTER
JOHN L. VONGLAHN, <i>Business Manager</i>		J. F. MILLER, <i>Professor of Physical Education</i>		

### FOOTBALL COACHING STAFF

WILLIAMS (DOC) NEWTON, <i>Head Coach</i>	HERMAN HICKMAN, <i>Line Coach</i>	BAKE WOOD, <i>Freshman Backfield Coach</i>
DR. ROBERT S. WARREN, <i>Backfield Coach</i>	NIG WALLER, <i>Freshman Coach</i>	DR. RAY SERMON, <i>Trainer</i>

It has been said, in a humorous way, that the reason big time teams play the Wolfpack is so they can get bids to the various bowl games.

Since Williams (Doc) Newton has been coaching at State the Wolfpack has taken on Alabama, Duke, Carnegie Tech, Duquesne and Tennessee, each of which has participated in either Rose, Sugar or Orange bowl games.

At this writing it appears that at least three of the lot—Duke, today's opponent, Tennessee and Duquesne will wind up in New Year's Day Bowl games.

Playing these teams hasn't helped the Pack's record of wins, but it has afforded followers of the State team the opportunity of seeing the finest teams in the Nation.

Just for fun, take a look at the records of the teams that have beaten the Pack this year.

Here they are:

TENNESSEE		WAKE FOREST		NORTH CAROLINA	
13 N. C. State	0	34 Elon	0	50 Citadel	0
40 Sewanee	0	19 South Carolina	7	36 Wake Forest	6
28 Chattanooga	0	6 North Carolina	36	12 Virginia Tech	6
21 Alabama	0	33 Miami	0	14 N. Y. U.	7
17 Mercer	0	32 N. C. State	0	14 Tulane	14
20 L. S. U.	0	66 Western Maryland	0	30 Pennsylvania	6
34 Citadel	0	0 Duke	6	17 N. C. State	0
13 Vanderbilt	0	14 Marshall	13	32 Davidson	0
		7 Clemson	20	3 Duke	13
CLEMSON		DETROIT		DUQUESNE	
18 Presbyterian	0	20 Mt. Pleasant	7	31 Illinois Wesleyan	8
6 Tulane	7	14 Kalamazoo	0	29 Waynesburg	0
25 N. C. State	6	13 Catholic University	14	7 Manhattan	0
27 South Carolina	0	21 N. C. State	7	21 Pittsburgh	13
15 Navy	7	16 Tulan	7	13 Texas Tech	0
13 George Washington	6	6 Villanova	13	21 Marquette	12
20 Wake Forest	7	13 Boston College	20	7 N. C. State	0
21 Southwestern	6	36 Manhattan	13		

State hasn't done so bad by itself at that, has it?

### CONCESSIONS On Sale in Riddick Stadium

Cigarettes—  
Camels  
Chesterfield  
Old Gold  
Phillip-Morris

} 20c

Coca-Cola ..... 10c  
Nehi Orange, Ginger Ale..... 10c  
7-Up ..... 10c  
Candies ..... 5c  
Pennuts ..... 10c  
White's Ice Cream ..... 10c  
Paper Seat Cushions ..... 25c  
Sandwiches ..... 15c

*“State College Keep Fighting Along”*



**White's Ice Cream**

*“There IS a difference”*



Raleigh, N. C.      ::      Since 1911

# WHAT THE SIGNALS MEAN



Holding. (Penalty—by offense, 15 yards; by defense, 5 yards.)



Offside or violation of kick-off formation. (Penalty, 5 yards.)



Illegal forward pass.



Crawling or pushing, 5 yards; helping ball carrier, 15 yards.



Score—touch-down, field goal, or conversion.



Unnecessary roughness, illegal defensive use of the hands, clipping, running into or roughing the kicker. (Penalty, 15 yards.)



Player illegally in motion. Penalty, 5 yards. If from shift or huddle, 15 yards.



Penalty refused, incomplete pass, missed field goal, or conversion, both sides offside, etc.



Interference with forward pass, pass touching ineligible player, or screen pass. (If penalty on offense, 15 yards and loss of down; interference by defense, halt to opponents on spot of foul as first down.)



Safety.



Delay of game or extra timeouts. (Penalty, 5 yards.)



Time out.



AND FOR TRUE SMOKING PLEASURE  
THE UNIVERSAL SIGNAL IS—

“CALL FOR  
PHILIP MORRIS”



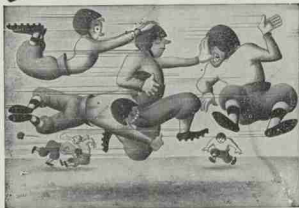
Definitely superior for your nose and throat! Complete enjoyment—unmarred by throat irritation.

CREATORS OF FAMOUS CIGARETTES FOR 91 YEARS, ALWAYS UNDER THE PHILIP MORRIS NAME



**WALLACE WADE**  
Director of Athletics  
Head Coach of Football

*Some Traveling!*

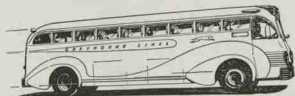


--but for longer trips, take a  
**GREYHOUND**

THE SMART WAY to get from here to there—no matter where “there” may be—is by GREYHOUND. Follow the team—literally! (A big percentage of America’s football squads do their out-of-town traveling by Super-Coach.) You’ll have almost as much fun enroute to the game as at the big event itself—and your savings by Greyhound usually cover your football tickets and then some! Next game—next week-end—next trip of any sort—go by GREYHOUND in Super-Coach comfort. ::: :::

UNION BUS TERMINAL  
PHONE 447

Corner Martin and McDowell Streets  
RALEIGH, N. C.



**GREYHOUND**  
*Lines*

TY COON



N. C. STATE

PAT FEHLEY

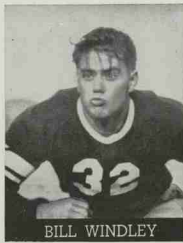
N. C. State →



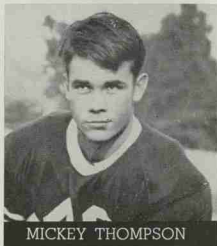
ARTIE ROONEY



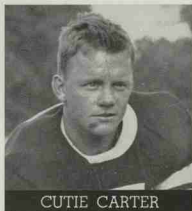
TED JOHNSON



BILL WINDLEY

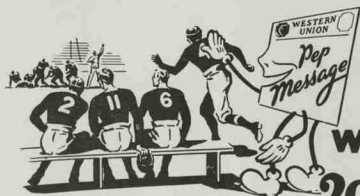


MICKEY THOMPSON



CUTIE CARTER

**"Pep them up"** by TELEGRAPH



Send **PEP**  
**MESSAGES**

**WESTERN UNION**

**20¢** LOCALLY **25¢** TO ANY WESTERN UNION POINT IN U. S.

Purchase Football Tickets By Western Union Shopping Service

Arrangements have been completed with athletic authorities of North Carolina State College so that alumni and fans in other cities may obtain football tickets through their local Western Union office for all games as long as tickets are available.

Your local Western Union office will accept orders for tickets for games at State College, wire the money to Raleigh, and have the tickets held at the Raleigh Western Union office pending arrival of the purchaser; or tickets will be mailed as directed.



*The*  
*Students Supply Store . . . . .*  
*Has Qualified as a Member of the*  
**Doc Newton Club**  
*and is a Supporter of . . . . .*



Coach Doc Newton  
His Staff and Team

On Your Way . . . .

Both to and from the Games you pass the

*Students Supply Store*

Make it a Point to stop in for Refreshments while you're on the Campus

Y. M. C. A. BUILDING — N. E. CORNER OF STADIUM

## THE WOLFPACK GRIDIRON



BOB CATHEY



CHARLIE SMART



JOHN SAVINI



DON TRAYLOR

N. C. STATE

IN APPRECIATION for the  
**Fine Spirit of Cooperation**  
 Existing between the State  
 College Student Body, the  
 Faculty, the Business Ad-  
 ministration and Ourselves

Established 1867

**Alfred Williams & Co.**

Booksellers :-: Office Outfitters  
 Engravers

119 Fayetteville Street

DIAL 7767

RALEIGH, NORTH CAROLINA

**CONVERSE**

"Chuck Taylor" Model

ALL STAR

BASKETBALL SHOES



"The  
 Natural  
 Choice  
 of the  
 Nation's  
 Champions"

All Star Basketball Shoes are worn by more leading basketball teams than any other make—convincing proof of their unchallenged superiority.

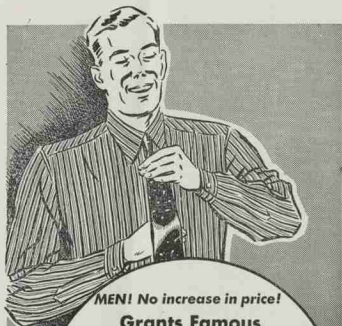
Three models available in either canvas or leather.

"Insist on All Stars"

**CONVERSE RUBBER COMPANY**  
 St. Paul Chicago New York

Factory: Malden, Mass.

N. C. State ➔



**MEN! No increase in price!**  
**Grants Famous**  
**"Pennleigh" Shirts**  
are now **SANFORIZED SHRUNK**

**1.00**

Another improvement for America's great \$1 shirt! Pennleigh's expert fit guaranteed after each laundering! Fine fabrics! Smart new Spring patterns! Sizes 14 to 17

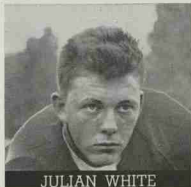
**W. T. GRANT CO.**

210 Fayetteville St.    ::    Raleigh, N. C.

**KNOWN FOR VALUES**



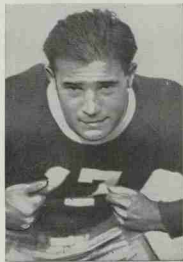
J. B. THOMPSON



JULIAN WHITE



RALPH BURT



TONY DIIESO

## *N. C. State Officials*



COL. J. W. HARRELSON  
*Dean of Administration  
N. C. State College*



PROF. H. A. FISHER  
*Chairman of Athletic Council*



J. F. MILLER  
*Professor of Physical Education*



JOHN L. VONGLAHN  
*Business Manager of Athletics*

At the Game  
and Everywhere

... DRINK ...

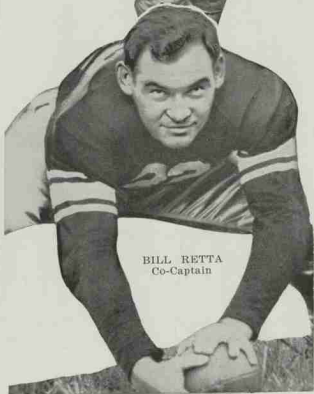


The All-American Thirst Quencher



MICKEY  
SULLIVAN

N. C. STATE



BILL RETTA  
Co-Captain

## N. C. State



CO-CAPTAIN ANDY PAVLOVSKY



BOBBY SABOLYK



HOWELL STROUP

To PREVENT SPILLS LIKE *These*



### NORTH CAROLINA STATE RELIES ON SEAL-O-SAN

Give a big hand to Seal-O-San this fall when you see those spectacular basketball games in Frank Thompson Gymnasium. For with a 100% non-slippery finish on the floor, you see *faster* footwork . . . *speedier* dribbling . . . *more confident* shooting.

Today, more than 5000 schools rely on slip-proof Seal-O-San for help in turning out winning teams.

Coaches and school officials are invited to write for complete details.

# SEAL-O-SAN

NON-SLIPPERY SEAL & FINISH FOR GYMNASIUMS

MADE EXCLUSIVELY BY

**The HUNTINGTON LABORATORIES Inc**  
DENVER • HUNTINGTON INDIANA • TORONTO

# North Carolina State College Squad

Player	Pos.	Age	Wgt	Hgt	Yr.	on V.	Home Town	Player	Pos.	Age	Wgt	Hgt	Yr.	on V.	Home Town
Mickey Sullivan*	E	23	195	5-11	3		Staten Island, N. Y.	Chick Doak, Jr.	G	20	169	5-8	1		Raleigh, N. C.
Alvin Phillips	E	19	175	6	1		Raleigh, N. C.	Johnny Sapos	G	19	165	5-8	1		Winston-Salem, N. C.
Charley Smart*	E	23	175	6	2		Concord, N. C.	Ed Smith	G	18	173	5-10	1		Raleigh, N. C.
Monte Crawford*	E	21	175	5-11	2		Spartanburg, S. C.	X-Babe Retter*	C	23	206	5-10	3		Easton, Pa.
Frank Owens	E	19	190	6-3	1		Charlotte, N. C.	Howell Stroup*	C	20	195	6-1	2		Cherryville, N. C.
Ed Tharrp	E	19	175	6	1		Shamokin, Pa.	Cutie Carter	C	21	165	5-9	1		Raleigh, N. C.
Phil Avery	E	20	178	6	1		Morganton, N. C.	Artie Rooney*	QB	23	186	5-10	3		Pittsburgh, Pa.
Wade Brown	E	19	200	6-3	1		Rockwell, N. C.	Dick (Magic) East	QB	21	175	6	1		White Sul. Spgs., W. Va.
Marion Stilwell	E	18	165	6-2	1		Thomasville, N. C.	Dick (Lux) Watts	QB	19	168	5-11	1		Baldwin, N. Y.
Mickey Thompson*	E	21	190	6-2	2		Elizabeth City, N. C.	Pennut Doak	QB	18	158	5-6	1		Raleigh, N. C.
Ty Coon*	T	24	200	6-1	3		Watertown, Conn.	X-Andy Pavlovsky*	HB	23	185	6	3		Struthers, Ohio
Ralph Burt*	T	20	200	6	2		Raleigh, N. C.	Pat Fehley*	HB	21	175	5-10	2		Easton, Pa.
Julian White	T	20	195	6	1		Raleigh, N. C.	Bobby Sabolyk*	HB	23	175	5-9	3		Yonkers, N. Y.
Curtis Ramsey	T	20	215	6-2	1		Northfork, W. Va.	Jack Huekabee	HB	19	175	5-11	1		Charlotte, N. C.
Woody Jones	T	18	185	6-1	1		Roxboro, N. C.	Earl Stewart	HB	19	180	6	1		Roxboro, N. C.
Gene Conrad	T	22	205	6-1	2		Charlotte, N. C.	Dud Robbins	HB	19	175	5-10	1		Burgaw, N. C.
Byron Leeper	T	21	185	6-2	1		Dallas, N. C.	Norm Wiggin	HB	20	196	6	1		Haverford, Pa.
Ralph Sadler	T	20	185	5-8	1		Burlington, N. C.	Hobart Ferree	HB	20	160	5-8	1		High Point, N. C.
John Savini*	G	21	195	6-1	3		N. Hanover, Mass.	Tony DiYeso*	FB	22	175	5-8	3		White Plains, N. Y.
Bill Windley	G	21	195	6-11	2		Pantego, N. C.	Bob Cathey	FB	21	175	5-10	1		Charlotte, N. C.
John Barr	G	21	180	5-11	1		Charlotte, N. C.	Reuben Morgan	FB	21	185	6	1		Raleigh, N. C.
J. D. Jones	G	20	170	5-10	1		Ashville, N. C.	Don Traylor	FB	22	165	5-9	3		Murfreesboro, N. C.
Ted Johnson	G	21	185	6	1		Paw Creek, N. C.								
Mac Williams	G	19	175	5-10	1		Raleigh, N. C.								
Bill Cooper	G	20	165	5-10	1		Charlotte, N. C.								
Tom Trobaugh	G	20	175	5-10	1		Morristown, Tenn.								
Walt Lee	G	19	160	5-10	1		Raleigh, N. C.								

\* Denotes Lettermen. X Denotes Co-Captains.



## TEAMWORK . . . every man doing the right thing at

the right time—makes a football team click.

When you drive into our service station, OUR teamwork starts to click—to give you complete, prompt, courteous, and efficient service.

For better service drive in to

### TIRE SALES & SERVICE COMPANY, Inc.

GOODYEAR TIRES

Hillsboro and Harrington Sts.

"One Stop Super Service Station"

Phone 4700

EXIDE BATTERIES

RALEIGH, N. C.

## Duke University

LE Parlow 56	LT Ruffa 52	LG Johnson 58	C Burris 12	RG Ribar 50	RT Winterson 54	RE Bailey 47
--------------------	-------------------	---------------------	-------------------	-------------------	-----------------------	--------------------

QB  
Prothro  
53

LHB  
G. McAfee  
22

RHB  
W. McAfee  
10

FB  
Robinson  
19

### SQUAD LIST

No.	No.	No.
10 W. MCAFEE, B	28 JETT, G	48 LANGE, G
12 BURNS, C	29 CHESTER, B	48 FELTY, T
13 NANIA, G	30 KILLIAN, B	50 RIBAR, G
14 MUELENAER, T	31 MARION, E	52 RUFFA, B
15 GROSS, B	32 JOHNSTON, C	53 PROTHRO, B
16 BARNETT, C	33 SWIGER, B	54 WINTERSON, T
17 ROBB, C	34 BOKINSKY, B	55 TUCKER, G
18 HARDY, T	36 DARNELL, E	56 PERDUE, E
19 ROBINSON, B	37 LACH, B	57 PIASECKY, E
20 SIEGFRIED, B	38 McDONOUGH, T	58 JOHNSON, G
21 LOVE, T	41 TALTON, T	61 ELDRIDGE, G
22 G. MCAFEE, B	42 KARMAZIN, T	64 GODDARD, G
24 EAVES, B	43 GORMAN, E	65 THOMPSON, C
25 GILL, C	44 LIPSCOMB, G	67 DEANE, B
26 HOUSEMAN, E	45 DAVIS, B	69 BROWN, B
27 WELCH, B	46 DEVOLNTINE, E	70 JACKSON, B
	47 BAILEY, E	

### OFFICIALS

Referee.....Maggie Magoffin, Michigan  
Umpire.....Wiley Sholar, Presbyterian

## N. C. State

LE Thompson 21	LT Coon 42	LG Windley 32	C Rettor 22 QB Fehley 24	RG Savini 36	RT Burt 43	RE Sullivan 33
----------------------	------------------	---------------------	-----------------------------------------	--------------------	------------------	----------------------

LHB  
Pavlovsky  
39

RHB  
Rooney  
19

FB  
Diyeso  
17

### SQUAD LIST

#### RED JERSEYS

No.	No.	No.
10 CRAWFORD, E	24 FEHLEY, B	37 CONRAD, T
11 COOPER, G	25 CATHEY, B	38 EAST, B
12 SABOLYK, B	26 BARR, G	39 PAVLOVSKY, B
14 TRAYLOR, B	27 ROBBINS, B	40 JOHNSON, G
15 CARTER, C	28 STROUP, C	41 RAMSEY, T
16 SMART, E	29 WATTS, B	42 COON, T
17 DIVESO, B	30 W. JONES, T	43 BURT, T
18 HUCKABEE, B	31 STEWART, B	44 BROWN, E
19 ROONEY, B	32 WINDLEY, G	45 OWENS, E
20 PHILLIPS, E	33 SULLIVAN, E	46 WHITE, T
21 M. THOMPSON, E	34 J. JONES, E	47 WILLIAMS, G
22 RETTOR, C	35 AVERY, E	50 TROBAUGH, G
23 MORGAN, B	36 SAVINI, G	

### OFFICIALS

Head Linesman.....Maurice Frew, W. and L.  
Field Judge.....Gummy Proctor, Richmond

*Time Out...*

light up with



Chesterfield  
*They Satisfy*





Chosen the  
Official Watch to  
Time This Football Game . . .  
**LONGINES**

Throughout the season America's most important football games will be timed by Longines Watches . . . official watch for all major international sporting associations . . . the watch of yesterday's air pioneers and today's airlines . . . the watch that has won 10 World's Fair Grand Prizes and 28 Gold Medals, and its other observatory accuracy awards than any other watch.

A Longines owner is justly proud, for no name on a watch means so much. The new, smartly-styled Longines watches are now being shown by Longines-Wittnauer jeweler agencies, priced \$40 and upward, for sport, business or formal wear for men and women. Folder on request.

Longines-Wittnauer Watch Co. Inc., 580 Fifth Ave., New York, N.Y.

**Longines**

THE WORLD'S MOST HONORED WATCH  
WINNER OF 10 WORLD'S FAIR GRAND PRIZES—28 GOLD MEDALS



## DUKE UNIVERSITY FOOTBALL SQUAD

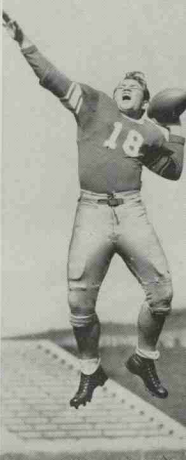
Player	Pos.	Wgt.	Hgt	Yr.	ss. V.	Home Town
Wesley McAfee	HB	164	5-11	2		Ironton, Ohio
Gordon Burns	C	191	5-11	3		Asheville, N. C.
John Nania	G	210	6-1	1		Middletown, N. Y.
Andre Muelenaer	T	198	6-0	2		Rosedale, N. Y.
John Gross	HB	177	5-10	3		North Braddock, Pa.
Robert Barnett	C	190	6-0	1		Albany, Ga.
Spencer Robb	C	168	6-2	3		Athens, Tenn.
Jack Hardy	T	191	5-11	3		Goldboro, N. C.
Roger Robinson	FB	181	6-0	3		Concord, Mass.
Winston Siegfried	FB	177	6-0	1		Richmond, Va.
John Love	T	203	6-1	1		Jamestown, N. Y.
George McAfee	QB	178	5-11	3		Ironton, Ohio
Willard Eaves	HB	181	6-2	3		Athens, Tenn.
Aubrey Gill	C	177	5-8	1		Etrick, Va.
French Houseman	E	173	6-0	1		Roanoke, Va.
Harry Welch	HB	175	5-10	3		High Point, N. C.
Charles Jett	G	188	5-8	1		Elizabethton, Tenn.
Charles Chester	HB	175	6-0	1		Raleigh, N. C.
Frank Killian	QB	181	6-1	2		Beaver Falls, Pa.
Jim Marion	E	190	6-1	2		Mt. Airy, N. C.
Mack Johnston	C	206	6-2	2		Durham, N. C.
Frank Swiger	HB	182	6-0	1		Martins Ferry, Ohio
George Bokinsky	QB	184	6-1	1		Windber, Pa.
Leonard Darnell	E	190	6-1	2		Winston-Salem, N. C.
Steve Laeh	HB	190	6-1	1		Altoona, Pa.
Robert McDonough	T	202	5-11	1		West Orange, N. J.
Wade Talton	T	205	6-0	1		Smithfield, N. C.
Mike Karmazin	T	195	5-11	1		Irwin, Pa.
Jack Gorman	E	184	6-1	1		Pottsville, Pa.
Jimmy Lipscomb	G	190	5-10	1		Hinton, W. Va.
Jasper Davis	FB	205	6-1	2		Wilson, N. C.
Joe DeVolentine	E	175	6-0	2		Miami, Fla.
E. L. Bailey	E	199	6-2	3		Lexington, N. C.
Jack Lange	G	195	5-11	3		Massillon, Ohio
Ralph Felty	T	185	6-0	1		Ashland, Ky.
Frank Ribar	G	190	6-1	3		Alliquippa, Pa.
Anthony Ruffa	T	203	5-9	2		Washington, Pa.
Thompson Prothro	HB	205	6-2	1		Memphis, Tenn.
Alex Winterson	T	205	6-2	2		Baldwin, L. I., N. Y.
John Tucker	G	180	5-8	1		Me. Holly, N. C.
Willard Perdue	E	195	5-11	3		Thomasville, N. C.
Al Plasecky	E	181	6-2	1		Jennette, Pa.
Allen Johnson	G	195	5-10	3		Lexington, N. C.
Wade Eldridge	G	191	5-10	2		Mt. Airy, N. C.
Pete Goddard	G	167	5-10	1		Rocky Mount, N. C.
Paul Thompson	C	178	5-11	1		Reidsville, N. C.
Carl Deane	HB	162	5-7	2		Charlottesville, Va.
Werner Brown	QB	157	5-10	1		Norfolk, Va.
Frank Jackson	HB	165	5-11	1		Charlotte, N. C.

### "DEPENDABILITY"

College Court Pharmacy

C. RHODES

Proprietor



**N. C. STATE**

REUBEN MORGAN

Top: WADE BROWN

Top: ALLEGHENY HAMPTON

PEANUT DOAK

Bottom: WOODY JONES

Bottom: GENE CONRAD



**ACE of the GRIDIRON!**

It's the Spalding Official Intercollegiate J5-V Football. The ball unequalled on any field.

For years it has been making history for all the famous teams. In fact, ever since its introduction, the J5-V has been proclaimed by coaches, players and officials alike, as the finest football made.

*A. G. Spalding & Bros.*

Division of Spalding Sales Corporation

**CHAMPION  
KNITWEAR COMPANY**

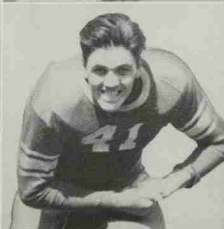
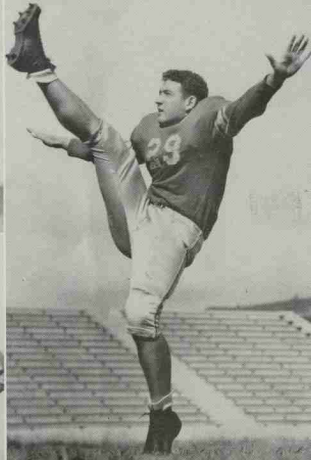
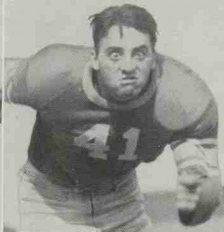
ROCHESTER, N. Y.

Leading Outfitters to Colleges in  
the Southern Conference, Military  
Schools, High Schools and  
Others

Catalogs on Request

**CHAMPION  
KNITWEAR COMPANY**

Department HB — Rochester, N. Y.



N. C. STATE

Top: LUX WATTS  
Bottom: EARL STEWART

Top: JOE AQUILINO  
Bottom: NORM WIGGIN

JACK HUCKABEE



IT WILL PAY YOU TO LOOK  
FOR THIS TRADE-MARK

*Rawlings*

WHEN BUYING ATHLETIC EQUIPMENT IT SETS THE  
PACE IN

DESIGN --: QUALITY --: STAMINA

Whatever Your Sport Is There Is Rawlings Equipment to Aid Your Game  
STATE USES RAWLINGS

COMPLETE LINES CARRIED BY  
**BOCOCK-STROUD COMPANY**  
RALEIGH and WINSTON-SALEM

**RAWLINGS MANUFACTURING CO.**  
ST. LOUIS MISSOURI

WOLFPACK.....

MARCHES ON!

Yesterday We Boosted

Today We Cheer

Tomorrow We Praise

STATE COLLEGE

and

THE WOLFPACK

We are proud that State College awarded the printing of this program to us. . . . We are also proud to have a State College man in our organization—BOB SESSOMS, Class of '31

MITCHELL PRINTING COMPANY  
115-117 WEST HARGETT STREET RALEIGH, NORTH CAROLINA



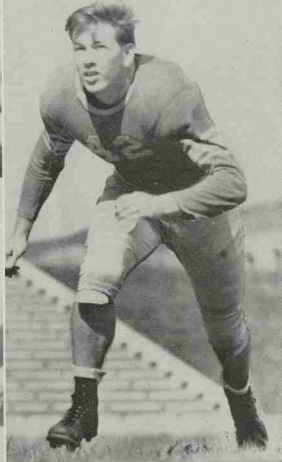
MONTE  
CRAWFORD



Top: ED THARP  
Bottom: MAGIC EAST



Top: MARION STILWELL  
Bottom: PHIL AVERY



JOHN BARR

N. C. STATE

**ZIP!**  
*and it's open!*

Old Gold's amazing  
New "ZIP-TOP" Pack  
Opens quick as a wink!  
You get *fresh*  
Double-Mellow Old Golds  
In a flash! Try  
The "ZIP-TOP" Pack today!

O.G.'s new "ZIP-TOP" pack  
FRESH Cigarettes in a FLASH!



Copyright, 1989, by P. Lorillard Co.



COMPLIMENTS OF

F. W.  
Woolworth  
Company

224-226 Fayetteville St.

RALEIGH, N. C.

Now . . . DOUBLE "CELLOPHANE"  
opens DOUBLE QUICK . . . 2 Jackets sliced in 1 ZIP!

We Sell *Longines*  
 THE WORLD'S MOST HONORED WATCH  
 Chosen OFFICIAL WATCH  
 for Most Important  
 FOOTBALL GAMES . . .



SYLVIA  
 17 Jts., Gold Filled  
 \$49.50



GOLD MEDAL A  
 17 Jts., Gold Filled, \$50



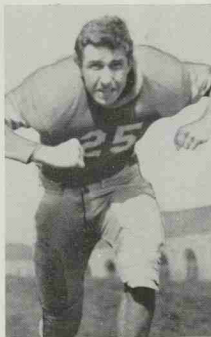
PAR AVION  
 17 Jts., Gold Filled, \$44.50

Among fine watches no name is more respected than Longines. Today, as ever, a Longines watch is an investment in beauty as well as reliable timekeeping. We are now showing the smart new 1940 Longines watches, priced at \$40 and upward. Your inspection is invited.

**Neiman's**  
 JEWELERS SILVERSMITHS DIAMOND EXPERTS  
 1100 FAYETTEVILLE ST.

RALEIGH, N. C.  
 DEPENDABLE JEWELERS

N. C. State →



HOBART FERREE



Top: DUD ROBBINS  
 Bottom: WALT LEE

WE INVITE YOU TO VISIT OUR MODERN STORE

Air Conditioned Luncheonette Open Until 8:00 P.M. After Each  
 State College Football Game

**MCLELLAN'S**

230-32 Fayetteville St.



RALEIGH, N. C.



EVERY SERVICE FOR  
 YOUR CAR

Wrecked Cars Rebuilt Like New  
 ALWAYS OPEN

WRECKER SERVICE

**JOHN W. EVANS' SON**

Morgan and Blount Sts., Raleigh, N. C.

# All-American Choice for "time out"



*The pause  
that refreshes*

**CAPITAL COCA-COLA BOTTLING CO.**

Telephone: Dial 2-1179  
RALEIGH, N. C.



NIG WALLER  
*Freshman Coach*

HERMAN HICKMAN  
*Varsity Line Coach*

WILLIAMS (Doc) NEWTON  
*Head Coach*

DR. BOB WARREN  
*Varsity Backfield Coach*

BABE WOOD  
*Freshman Backfield Coach*





ROMEO LEFORT  
N. C. State  
*Swimming Coach*



CHICK DOAK  
N. C. State  
*Veteran Baseball Coach*



DR. R. R. SERMON  
N. C. State  
*Trainer and Basketball and Track Coach*

# LET POSTAL RUN INTERFERENCE

**WHEN** You're bucking up against a particularly tough assignment and you need a bit of help, you'll find that Postal Telegraph does a bang-up job in clearing the way quickly and successfully.

## **—THE 2,000 MILE PAY-OFF PASS**

Tsk, tsk! Don't you know you shouldn't bet on games. Well, anyway, you can pay off anywhere in the U.S. by Postal Telegraph money orders—the world's most inexpensive.

## **—THE SINGING LOVE-MESSAGE**

Do you stammer when you try to whisper sweet nothings to your gal? Let Postal do it via singing telegrams. A nifty novelty. Makes heap-big impression.

## **—THE "WIRE-FIFTY" P. D. Q.**

These ⚡: \$ football week-ends can break anyone! A Postal Telegraph wire home for dough looks urgent—gets results FAST. (And you can send it collect.)

## **—THE FUMBLER BIRTHDAY GREETING**

Did you forget dear, rich Aunt Agatha on her natal anniversary? For shame! But there's still time to send a Postal ready-written message. 25¢ — nationally. 20¢ — locally.

## **—THE LAST MINUTE TOURIST TRICK**

If you forgot to get accommodations for next week's "away" game, make sure you don't have to sleep in the park. Send a Postal Reservation telegram (35¢) for reservations.

## **—HAPPY THANKSGIVING!**

## **—MERRY XMAS! HAPPY NEW YEAR!**

Yeah, we know we're ahead of time. But we just want to remind you that for all holidays Postal greetings are the best and the most inexpensive.

PUT IT  
UP TO

# Postal Telegraph

*After the Game—*  
**RALEIGH'S FINEST  
THEATERS**

WHERE ENTERTAINMENT COSTS  
SO LITTLE

## AMBASSADOR

Last Times Today

KAY KYSER . . . . ADOLPHE MENJOU  
IN  
"THAT'S RIGHT, YOU'RE WRONG"

SUNDAY : MONDAY : TUESDAY

TYRONE POWER : LINDA DARNELL  
IN

"DAY TIME WIFE"

*Special Thanksgiving Attraction  
Beginning WEDNESDAY*

DEANNA DURBIN  
IN  
"FIRST LOVE"

## CAPITOL

*Last Times Today  
WILLIAM BOYD IN  
"RANGE WAR"*

Sunday Only  
BORIS KARLOFF IN  
"MR. WONG IN CHINATOWN"

MONDAY : TUESDAY  
LIONEL BARRYMORE IN  
"ON BORROWED TIME"

WEDNESDAY AND THANKSGIVING DAY  
LANE SISTERS — JOHN GARFIELD  
CLAUDE RAINS — FAY BAINTER IN  
"DAUGHTERS COURAGEOUS"

## STATE

Last Times Today  
EDW. G. ROBINSON in  
"BLACKMAIL"

SUN., MON., TUES.  
RICHARD GREENE in  
Here I Am a Stranger  
with RICHARD DIX  
BRENDA JOYCE  
ROLAND YOUNG

4 DAYS STARTING WED.  
ANN SHERIDAN AND  
THE DEAD END KIDS  
in

"The Angels Wash  
Their Faces"

## PALACE

Last Times Today  
"KONGA,  
WILD STALLION"

HELD OVER  
SUN., MON., TUES.  
KAY KYSER and  
HIS BAND in  
"That's Right,  
You're Wrong"

WEDNESDAY and Thanks-  
giving Day  
"Hero for a Day"  
ANITA LOUISE  
CHAS. GRAFEWIN  
DICK FORAN



We are Nuts about  
**NEHI ORANGE**

NEHI BOTTLING COMPANY

Hillsboro Road :: :: Raleigh, N. C.

FOR N. C. STATE -- WIN OR LOSE!

BLAN CHAPMAN, '33

STORR ENGRAVING CO.

RALEIGH

*Bernhardt's*  
WHERE  
BETTER LIVING BEGINS  
HOTPOINT APPLIANCES

508 HILLSBORO ST. :: RALEIGH, N. C.

L  
U  
N  
C  
H

**PROESCHER'S**  
**ORIENTAL**  
Restaurant  
Raleigh's Finest

D  
I  
N  
E  
R

YOU BE THE JUDGE

**STATE COLLEGE, KEEP FIGHTING ALONG!**

Words by H. M. RAY

Music—U. S. Field Artillery—E. L. GRUBER

Play the game, fight like men,  
We're behind you, lose or win—  
State College, keep fighting along!  
Scrap 'em men; hold 'em fast;  
You'll reach victory at last—  
State College, keep fighting along!  
Rise, men, to the fray, and let your banners wave,  
Shout out our chorus loud and strong;  
And where'er we go we'll let the wide world  
know,  
Old State College keeps fighting along!

**ALMA MATER (N. C. STATE)**

Words by A. FOUNTAIN, '23

Music by BONNIE F. NORRIS, '23

Where the winds of Dixie softly blow, o'er the  
fields of Carolina;  
Where the tall pine tree sentinels stand, as a  
guardian at thy shrine;  
Where the bravest hearts of men are found, that  
are loyal through and through,  
There stands ever cherished N. C. State, firmly,  
strong and true.  
Then lift your voices! Loudly sing our Alma  
Mater's praise!  
Over all the earth her song shall ring, whose  
notes we proudly raise;  
Her glories we shall sound afar, from hill to  
ocean-side;  
Our hearts ever hold you, N. C. State,  
In the folds of their love and pride.

**SHOUT STATE!**

Words by A. M. FOUNTAIN, '23

Music—"Invincible U. S. A."—By F. A. MEYERS

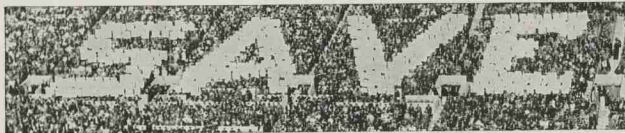
Stand up, ye men! Stand firm and shout your  
battle cry!  
For Old Alma Mater's braves, sing loud and  
strong.  
Then shout, N. C. State! Lift up her banners  
proud and high,  
While her honor they defend, we shall sing the  
victor's song.

**STATE COLLEGE—WIN OR LOSE!**

Words by WARREN SPEAR, '40 and BILLY WARD, '42

Music—"Beer Barrel Polka"

Bring on the Wolfpack  
Dressed in the grey and the red;  
Bring on the Wolfpack,  
We'll fight the — till they're dead;  
Kick, run and pass, boys,  
Give them the N. C. State blues;  
Remember that we're all behind you,  
State College, win or lose.



FOR THE BIG GAME — THE GAME OF LIFE

## Cheap Electricity

SAVES TIME, WORK, AND MONEY

Whether the job to be done is in the home, store, office, or factory an investigation will prove to your satisfaction that it can be done in **LESS TIME**, with **LESS EFFORT**, and at **LESS EXPENSE** with Cheap Electricity.

CAROLINA POWER & LIGHT COMPANY

DIAMONDS

WATCHES -:- SILVERWARE



GIFTS

For All Occasions



BOWMAN'S

*Jewelers*

15 West Hargett Street  
RALEIGH, N. C.



Tickets for All N. C. State Home Football  
Games on Sale At—

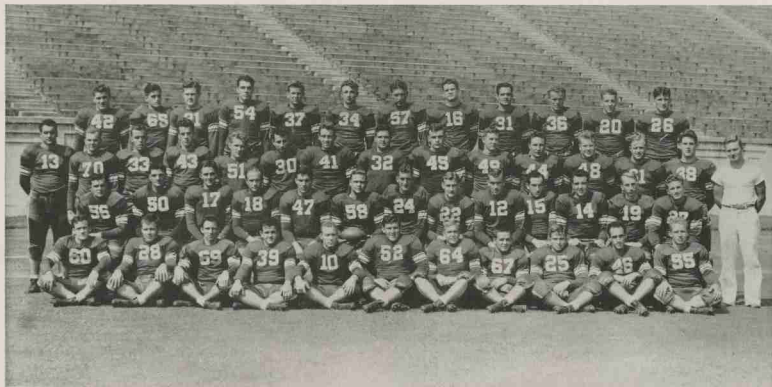
**Eckerd's**

DRUG STORE

222 Fayetteville Street

"RALEIGH'S LARGEST AND FINEST"

## DUKE UNIVERSITY VARSITY FOOTBALL SQUAD—1939 SEASON



*Front row, left to right:* ARTHUR MILLER, CHARLES JETT, WERNER BROWN, GRADY HEDRICK, WESLEY McAFEE, ANTHONY RUFFA, PETE GODDARD, CARL DEANE, AUBREY GILL, JOE DeVOLENTINE, AND JOHN TUCKER. *Second row, left to right:* WILLARD PERDUE, FRANK RIBAR, SPENCER ROBB, JACK HARDY, BILL BAILEY, CAPTAIN ALLEN JOHNSON, WILLARD EAVES, GEORGE McAFEE, GORDON BURNS, JOHN GROSS, ANDRE MUELENAER, ROGER ROBINSON, HARRY WELCH, AND TED PRICE, STUDENT MANAGER. *Third row, left to right:* JOHN NANIA, FRANK JACKSON, FRANK SWIGER, JACK GORMAN, BILL MYSKO, FRANK KILLIAN, WADE TALTON, MACK JOHNSTON, JASPER DAVIS, RALPH FELTY, JIMMY LIPSCOMB, JACK LANGE, WADE ELDRIDGE, AND BOB McDONOUGH. *Top row, left to right:* MIKE KARMAZIN, PAUL THOMPSON, JOHN LOVE, ALEX WINTERSON, STEVE LACH, GEORGE BOKINSKY, AL PIASECKY, BOB BARNETT, JIM MARION, LEONARD DARNELL, WINSTON SIEGFRED, AND FRENCH HOUSEMAN

# Greetings!

The Greatest Hotel Value  
IN Raleigh NORTH CAROLINA  
Hotel Sir Walter

Largest and  
Finest

350 Rooms . .  
all with tub or  
shower . . .



All Outside  
Rooms

With Bath . . . . .  
Beginning at \$2.50  
daily . . . . .

Carolina's Meeting Place

Only Hotel in Raleigh with *Circulating Ice Water*  
and permanent Radios in every room ~ ~ ~  
Air Conditioned Coffee Shop and Main Dining  
Room with *Dinner and Dance Music* ~ ~ ~

A ROBERT MEYER HOTEL

Roland A. Mumford, Manager

Garage Adjoining

## HOTEL SIR WALTER

*"Visit the Coffee Shop"*

# Camel

**— MORE PLEASURE  
PER PUFF — MORE PUFFS PER PACK**

**PENNY  
FOR PENNY  
YOUR BEST  
CIGARETTE  
BUY**



Copyright, 1939, R. J. Reynolds Tobacco Company, Winston-Salem, N. C.



**Long-Burning  
Costlier Tobaccos**

By burning 25% slower than the average  
of the 15 other of the largest-selling  
brands tested—slower than any of them—  
CAMELS give a smoking plus equal to

**5 EXTRA SMOKES  
PER PACK**