

An illustration for a football game. On the left, a muscular football player with red hair, wearing a red and white striped sweater and quilted brown pants, stands holding a football and a cigarette. On the right, a man with glasses, wearing a red cardigan and brown pants, sits on a bench eating from a metal pot. The background is a plain, light-colored wall.

THE WOLFPACK GRIDIRON

STATE vs. FURMAN
DIDDICK STADIUM

RALEIGH, N. C.

OCTOBER 22, 1938

2:30 P. M.

25c

SAY PAL!

What about this for a Pleasant Week-End?

DOC NEWTON'S BOYS
Will Furnish You All The Thrills

The

HOTEL CAROLINA
Will Provide You With Every Comfort

250 Rooms Each With Bath

GOOD FOOD

(At Popular Prices)

Radios and Every Modern Convenience



ROBERT I. LEE, Manager

THE WOLFPACK GRIDIRON

Official FOOTBALL Program

WADE ISON, Editor

N. C. State's 1938 Schedule

<i>Date</i>	<i>Opponent</i>	<i>Place</i>
Sept. 24—	Davidson	Charlotte
	Score: Davidson, 7; State, 19	
Oct. 1—	NORTH CAROLINA	RALEIGH
	Score: Carolina, 21; State, 0	
Oct. 8—	Alabama	Tuscaloosa, Ala.
	Score: Alabama, 14; State, 0	
Oct. 15—	WAKE FOREST	RALEIGH
	Score: Wake Forest, 7; State, 19	
Oct. 22—	FURMAN	RALEIGH
Oct. 29—	Virginia Tech	Blacksburg, Va.
Nov. 5—	Manhattan	New York
Nov. 12—	U. OF DETROIT	RALEIGH
Nov. 19—	Duke	Durham
Nov. 24—	CARNEGIE TECH	RALEIGH
Dec. 3—	The Citadel	Wilmington

J. F. MILLER, Professor of Physical Education

J. L. VONGLAHN, Business Manager

COACHING STAFF

WILLIAMS S. NEWTON, Head Coach

DR. ROBERT S. WARREN, Backfield Coach

HERMAN HICKMAN, Line Coach

NIG WALLER, Freshman Coach

WILLIE DUSTY, Assistant Coach

ALEX REGDON, Assistant Coach

THE WOLFPACK GRIDIRON is published for all N. C. State Home Football Games by the Sports Publicity Bureau in cooperation with the Athletic Department. Address all communications to Wade Ison, State College, Raleigh, N. C.

AT IT AGAIN!

By J. B. C. CLARK
Sportcaster, Radio Station WPTF

GOOD afternoon, ladies and gentlemen. This is J. B. Clark speaking to you from the WPTF radio booth located over the press box high above Riddick Stadium, where we are about to bring you a play-by-play broadcast of the annual State-Furman grid classic. It's a gala day on the Tech campus because it's Home-coming for thousands of old grads and they're here to see a greater and finer State College team, a fighting Wolfpack brimming with the kind of team-spirit that refuses to admit defeat but fights relentlessly to that final gun.

It's just a few minutes before kick-off. Both teams are down there now, limbering up. State's huskies in their brilliant red, the Furman Hurricanes garbed in purple. Riddick Stadium is a mass of color and laughter and gaiety as thousands pour through the entrance tunnels, eager to see these red Wolves of Raleigh snap into action. And there's the band—State's famed Red Coat band, filling this crisp October air with stirring college songs. An ideal day, a great game in store for us, and here we are high above the throng, waiting for that opening whistle and the first thud of the pigskin that sends two scrapping elevens into battle.

You know, I've been keeping an eye on you. I spotted you the minute we took the air. Yes, you, down there below us, your head cocked around, hand over your eyes, gazing up this way and wondering why in the world a grown-up man is acting so excited just because he's facing an odd-shaped metal gadget before him. I remember you. Last Saturday you didn't attend a game, but heard one on the radio, and then and there you decided to go and see for yourself just what this thing called football does to 20,000 people that makes them go balmy with hysteria. And there you, looking up this way and admitting, perhaps a trifle disappointedly, that's how you do it. Well, it may be a trifle more involved than it appears on the surface, so let's go behind the scenes and see how radio proceeds to broadcast a holiday for old King Football.

The first thing WPTF does is to look over the schedules of our neighboring schools and select representative games for the season, showing no partiality to any institution but endeavoring to compose a schedule of broadcasts which we feel will command the major attention of our listeners. Then, we



ask for permission of each school to broadcast its particular home games. This being granted, the next thing to do is to get acquainted with the teams we'll see during the year, particularly the home clubs, as State, Carolina, Wake Forest and Duke. And by getting acquainted, I mean doing everything but consulting each man's family record-book for the exact time he cut his first tooth. We ask for a squad list from every school whose teams we will see. On this list is printed the name of each man, his jersey number, class standing, weight, height, home town, position on the squad, and all such facts that make interesting chatter when a certain player shines on the field and deserves a bit of praise.

But don't get me wrong. We don't trust all of that acquired information to memory, no sir. On a broadcast, the listeners want facts and without delay while an announcer gropes for words. Sooo, we get a batch of ordinary department store sales tags and on each tag we have typed a player's name and all the data we have collected concerning him. No, we don't clutch these tags in our hands. That would get a bit cumbersome after the game started. The simple thing to do is to build a couple of flat-surfaced boards, corresponding to the line of scrimmage. On each board is marked off eleven spaces, seven in the line and four in the backfield and in each space, which is plainly labelled as to position, is driven a nail. Then tags, bearing the names of players who perform

in those various positions, are suspended on the corresponding nail. Thus, we have our teams lined up in the order in which they are expected to enter the game.

But that's not all. When you're in a radio booth, 500 feet from the field, you can't possibly see everything that goes on. And the logical thing to do is to get a couple of assistants. In radio sports jargon, we call them spotters, because that's just what they do. They spot, or identify the men involved in every play. Usually every squad has two or three men who are out of the game, because of injuries. They have to sit on the bench anyhow, and it's much easier to see the game from our vantage point, so up they come, one from State and one from Furman.

Now, let me explain how they do their jobs. We'll say the Wolfpack has the ball. (Cheers) It's snapped. Instantly the State spotter points to the tag on the State board before us, bearing the name of the back who gets the ball. At the same time, the Furman line charges through and State's ball-carrier is smeared for a loss. (Boos) The Furman spotter indicates by a point of his finger the tag with the name of the Hurricane tackler who got his man. See? And all the announcer does is sit there and gab, with a spotter on each side of him, while he keeps one eye on the ball, the other on his two boards, still a third on the timeclock, and if he were a cyclops a fourth on both rival coaches as they bite their nails. Meanwhile, coursing through our thoughts while words spiel forth are such matters as the correct down, yardage to go, the score, time left to play, substitutes coming in, and how in the world shall we say something nice about the loser to soothe the feelings of an ardent alumnus who might otherwise accuse us of pulling for the victors.

But hold on, here's Graham Poyner, my colleague on these broadcasts, who's all set to give you the starting line-ups and to announce the first half play-by-play, and I can spot Carl Goerch, our half-time interviewer and commentator, coming toward me with a bottle of pop, so thanks for looking up this way and now, you'd better look back toward the field because there go the rival captains out to flip a coin and in just a minute this game will be on. Hope you enjoy it, that your favorite wins, and next time you can't come up, tune us in, won't you, and I'll BC'n you.

JOHNNIE "Calls" THE SIGNALS!



FOR TRUE SMOKING PLEASURE

Call for **PHILIP MORRIS**

Penalties

- | | | |
|--|--|---|
| 1 Holding by defensive side | 6 Illegal tackling or blocking | 12 Substitute failing to report |
| 2 Crawling | 7 Offside | 13 Backfield in motion |
| 3 Attempt to draw opponents offside | 8 Encroachments on neutral zone | 14 Taking time out more than three times during half |
| 4 Delaying game | 9 Feint to snap ball | 15 Player out of bounds |
| 5 Taking more than two steps after fair catch | 10 Illegal position | 16 Running into kicker |
| | 11 Interference with opponents before ball is put in play | |
| LOSS OF FIFTEEN YARDS | | |
| 17 Holding by side in possession of ball | 24 Tripping | 31 Individual going on field without permission |
| 18 Hurdling | 25 Leaving field during one-minute intermission | 32 More than one attendant going on field |
| 19 Coaching from sidelines | 26 Unsportsmanlike conduct | 33 Failure to come to one-second stop in shift play |
| 20 Intentional grounding of forward pass. In addition to 15 yard penalty, team also loses down. | 27 Piling up | 34 Roughing the kicker |
| 21 Interference with fair catch | 28 Tackling out of bounds | 35 Clipping |
| 22 Substitute communicating before first play | 29 Pushing, pulling, interlocking interference, etc. | 36 Illegal return to game |
| 23 Tackling or throwing fair catcher | 30 Running into opponents illegally | 37 Team not ready to play at scheduled time |
| | | |
| OTHER PENALTIES | | |
| 38 Foul within one-yard line: half distance to goal line | 40 Slugging: half distance to goal and disqualification | 42 Any act committed by an outsider but affecting the game: the referee is empowered to impose such penalty as justice may require |
| 39 Interference with forward pass by defense: loss of the ball | 41 Flagrant roughing of kicker: 15 yards and disqualification | |



COL. JOHN WILLIAM HARRELSON
*Dean of Administration
North Carolina State College*



JOHN L. VONGLAHN
*N. C. State
Business Manager of Athletics*

WHEN IN RALEIGH —
BE SURE TO VISIT

**CAROLINA
FLORISTS, Inc.**

A Staunch
State Supporter

FLOWERS FOR
ALL OCCASIONS
"Just Off Campus"

2806 Hillsboro Street
Phone 3646
RALEIGH, N. C.



PROF. H. A. FISHER
*N. C. State
Chairman of Athletic Council*

To State College • • and the Wolfpack

We pledge our support
We assure you a
boost at every
opportunity • •

WE are proud that State College
awarded the printing of this
program to us.. We are also proud
to have a State College man in our
organization .. BOB SESSOMS
Class of '31



THE winner in
every printing
test ♦ No matter
how complicated
we always GIVE
satisfaction ♦ Our
one ambition is to
give SUPERIOR
PRINTING

MITCHELL Printing Company

Printing that Satisfies and Prices to Suit

115-117 West Hargett Street ♦ Phone 18 ♦ RALEIGH, North Carolina

WOLFPACK BOOSTERS

Bernhard's
WHERE
BETTER LIVING BEGINS
HOTPOINT APPLIANCES

508 HILLSBORO ST. 11 RALEIGH, N. C.

FOR N. C. STATE — WIN OR LOSE!

BLAN CHAPMAN, '33

STORR ENGRAVING CO.

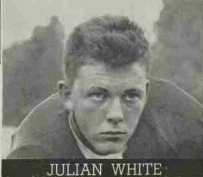
RALEIGH

WOLFPACK

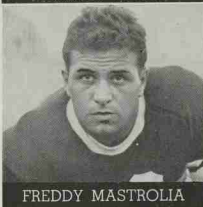
ED COON



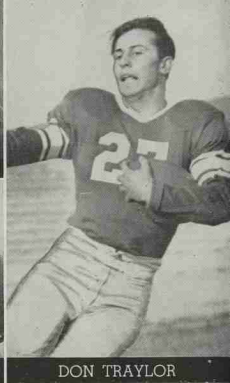
PAT FEHLEY



JULIAN WHITE



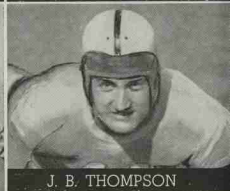
FREDDY MASTROLIA



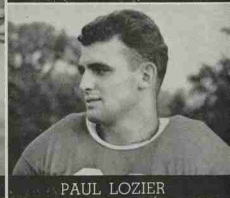
DON TRAYLOR



BOBBY SABOLYK



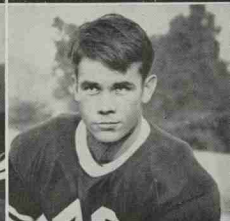
J. B. THOMPSON



PAUL LOZIER



FRED GARDINER



MICKY THOMPSON

*Yesterday
Today
Tomorrow*



"It Pays to Play"

AN ENTRY IN THE SPORTS FIELD THAT ALWAYS CLICKS!

Year after year Rawlings marches on designing and building Athletic Equipment that sets the pace in design, quality, stamina; Equipment that is nationally known and approved by players of all sports for its distinctive Rawlings Qualities.

*Whatever your sport there is Rawlings
Equipment to aid your game*

Distributors

BOCOCK - STROUD COMPANY
RALEIGH and WINSTON-SALEM



RAWLINGS MANUFACTURING CO.

ST. LOUIS

--

--

:

MISSOURI



PROF. J. F. MILLER
Professor of Physical Education

RALEIGH'S LARGEST AND FINEST

Drug Store

Eckerd's

222 Fayetteville Street

"Creators of Reasonable Drug Prices"



PATENT MEDICINES -- COSMETICS

DRUGS -- SUNDRIES

FOUNTAIN and LUNCHEONETTE SERVICE

THE WOLFPACK GRIDIRON

We Invite You to Visit Our New Store :-

Air Conditioned Luncheonette Open Until 8:00 P.M. After Each
State College Football Game

McLELLAN'S

230-32 Fayetteville St.

:-

:-

:-

:-

RALEIGH, N. C.



Sets the Pace for

Young Men's Clothing and Haberdashery

213 Fayetteville St.

:-

RALEIGH

"DEPENDABILITY"

College Court Pharmacy

C. RHODES

:-

Proprietor



FOR THE BIG GAME—THE GAME OF LIFE

Cheap Electricity

SAVES TIME, WORK, AND MONEY

Whether the job to be done is in the home, store, office,
or factory an investigation will prove to your satisfac-
tion that it can be done in **LESS TIME**, with **LESS**
EFFORT, and at **LESS EXPENSE** with Cheap Elec-
tricity.

CAROLINA POWER & LIGHT COMPANY

A North Carolina Institution

CHARLES Stores Company

North Carolina's
Economy Store
For All the Family

PLENTY OF KICKS
BUT NO COMPLAINTS



Plenty of LONG kicks, too! For every record kick ever recorded in football was made with a Spalding Official Ball.

In fact, the whole history of the Spalding J5-V Official Intercollegiate Football is liberally sprinkled with record-breaking performance.

A. G. Spalding & Bros.

ATHLETIC GOODS MANUFACTURERS

BIGGER - BETTER



PEPSI-COLA

A delicious,
energy
building
cola drink.
Its name is
founded
on purity.

WORTH A DIME

Distributed by the

Pepsi-Cola Bottling Company

2513 Fairview Road
RALEIGH, N. C.

IT'S A WINNER! - - -

WHITE'S
Sir Walter Raleigh
Ice Cream

- - - "There is a Difference"

THE WOLFPACK

Uses
O'SHEA

QUALITY and SERVICE have made O'SHEA'S
Football Jerseys and Sweaters the choice of
Leading College and University Coaches
throughout the country.

BE SMART
USE O'SHEA

O'SHEA KNITTING MILLS

Athletic Knitted Wear for Every Sport
2701 N. Pulaski Road -:- CHICAGO

WE'RE FOR N. C. STATE— WIN OR LOSE!
INSURE WITH US AND YOU **CAN'T** LOSE!



MUTUAL INSURANCE AGENCY

HUGH H. MURRAY, Jr. ('32), Manager



313 Lawyer's Bldg.

RALEIGH

Phone 3091

THE WOLFPACK GRIDIRON

COMPLIMENTS OF

F. W.
Woolworth
Company

224-226 Fayetteville St.

Raleigh, N. C.

A Double
Sweetheart



Copyright, 1938, by
F. Loettliard Co., Inc.

Old Gold's prize crop tobaccos
are double mellow, double
sealed in double Cellophane
for true freshness.

For Finer, FRESHER Flavor,
Smoke Double-Mellow Old Golds

RALEIGH

THE

Progressive
Capital of a
Progressive
State



RALEIGH CHAMBER
of COMMERCE

DIAMONDS

WATCHES -- SILVERWARE



GIFTS

For All Occasions



BOWMAN'S
JEWELERS

15 West Hargett Street
RALEIGH, N. C.

THE WOLFPACK GRIDIRON

All-American Choice for "time out"



*The pause
that refreshes*

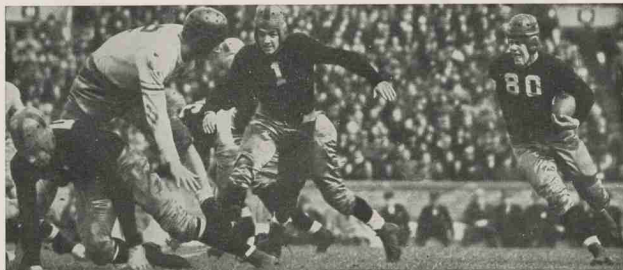
Capital Coca-Cola Bottling Co. Telephone 542
RALEIGH, N. C.

THE WOLFPACK GRIDIRON

North Carolina State College Squad

Player	Pos.	Age	Hgt	Wgt	Yr. on V.	Home Town	Player	Pos.	Age	Hgt	Wgt	Yr on V.	Home Town
Fred Gardner*	E	19	6-1	200	2	Smithfield, N. C.	John Savini*	G	20	6-1	195	2	N. Hanover, Mass.
John Tatum	E	21	6-1	190	1	McColl, S. C.	Steve Acai*	G	23	5-8	387	3	Donora, Pa.
Charley Smart	E	22	6	175	1	Concord, N. C.	Bill Matheney*	G	25	5-11	295	3	Pulaski, Va.
Mickey Sullivan*	E	22	5-11	195	2	Staten Island, N. Y.	J. D. Jones	G	19	5-10	170	1	Asheville, N. C.
Mickey Thompson*	E	20	6-2	190	1	Weeksville, N. C.	Mac Williams	G	18	5-10	175	1	Raleigh, N. C.
Monte Crawford	E	20	5-11	175	1	Spartanburg, S. C.	Bill Melver	G	19	5-11	175	1	Clearwater, Fla.
Wayland Stuart	E	21	6-1	160	1	Winston-Salem, N. C.	Cutie Carter	C	20	5-9	165	1	Raleigh, N. C.
Phil Avery	E	19	6	175	1	Morganton, N. C.	Howell Stroup	C	19	6-1	195	1	Cherryville, N. C.
Wade Brown	E	18	6-3	200	1	Rockwell, N. C.	Bill Retter*	C	22	5-10	206	2	Easton, Pa.
Ed (Ty) Coon*	T	23	6-1	200	2	Watertown, Conn.	Don Traylor	QB	21	5-9	165	2	Murfreesboro, N. C.
Walt Novick	T	19	6	200	2	Frackville, Pa.	Tony DiYesso*	QB	21	5-8	175	2	White Plains, N. Y.
Gene Conrad	T	21	6-1	200	1	Charlotte, N. C.	Pat Fehley	HB	20	5-10	175	1	Easton, Pa.
J. B. Thompson*	T	21	6-2	195	2	Mount Holly, N. C.	Andy Pavlovsky†	HB	22	6	185	2	Struthers, Ohio
George Fry*	T	22	6-1	190	3	Raleigh, N. C.	Bobby Sabolyk*	HB	22	5-9	175	2	Yonkers, N. Y.
Ralph Burt	T	19	6	200	1	Raleigh, N. C.	Artie Rooney*	HB	22	5-10	185	2	Pittsburgh, Pa.
Julian White	T	19	6	195	1	Raleigh, N. C.	Dick Watts	HB	18	5-11	165	1	Baldwin, N. Y.
Bill Windley	T	20	5-11	195	1	Pantego, N. C.	Paul Lozier*	FB	20	6-1	208	2	Grantwood, N. Y.
Freddy Mastrolia*	G	23	5-10	180	3	East Boston, Mass.	Kenneth Sands*	FB	25	6	180	2	Pulaski, Va.
Bunnie Hines*	G	22	5-10	165	3	Winston-Salem, N. C.	Bob Cathey	FB	29	5-10	175	1	Charlotte, N. C.
Ted Johnson	G	20	6	185	1	Paw Creek, N. C.							
Warren Wooden*	G	22	5-9	180	3	Baltimore, Md.							

* Denotes Lettermen 1957. † Denotes Letterman 1956.



TEAMWORK . . .

every man doing the right thing at the right time—makes a football team click.

When you drive into our service station, OUR teamwork starts to click—to give you complete, prompt, courteous, and efficient service.

For better service drive in to

TIRE SALES & SERVICE COMPANY, Inc.

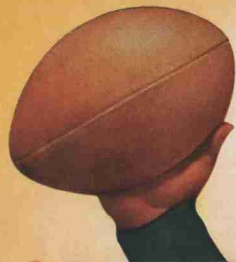
"One Stop Super Service Station"

Hillsboro and Harrington Sts.

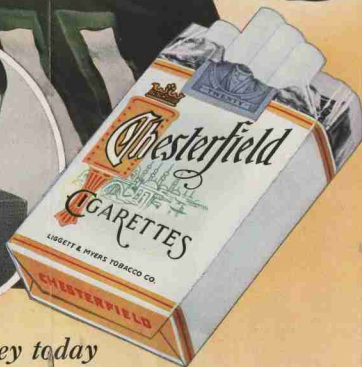
Phone 4700

RALEIGH, N. C.

More Pleasure for MILLIONS



EDDIE DOOLEY
All-American Star
hitting the mark in '26



STATE vs. FURMAN UNIVERSITY

Probable Starting Lineups

WOLFPACK	Pos.	HURRICANE
Thompson (48)	LER	(65) Nolan
Coon (42)	LTR	(38) Cornwall
Acai (29)	LGR	(52) Wofford
Retter (22)	C	(29) Barker
Wooden (34)	RGL	(93) Weigel
Fry (45)	RTL	(59) Hinson
Sullivan (33)	REL	(26) Coley
Rooney (19)	Q	(35) Huppel
Pavlovsky (39)	LHR	(53) Shetley
Sabolyk (31)	RHL	(23) Zima
Sands (25)	F	(58) Lipscomb

OFFICIALS

Toots Causey (South Carolina)	Referee
Tom Fuller (Florida)	Umpire
Jack Black (Davidson)	Headlinesman
Curley Saunders (W. & L.)	Field Judge
State Squad on Preceding Page	

N. C. STATE COLLEGE

15 Carter, c	27 Traylor, hb	38 Losler, hb
16 Smart, c	28 Stroup, c	39 Pavlovsky, hb
17 D'Yess, qb	29 Arel, g	41 Avery, c
19 Knoyer, qb	30 Cashey, hb	42 Coen, t
20 Hines, g	31 Sabolyk, hb	43 Hurt, t
21 Mathoney, g	32 Winsley, t	44 Novick, t
22 Retter, c	33 Sullivan, g	45 Fry, t
23 Crawford, c	34 Wooden, g	46 White, t
24 Felley, hb	35 Watts, hb	47 Tatum, c
25 Sands, fb	36 Mastrolia, g	48 Thompson, t
26 Savini, g	37 Conrad, t	49 Gardner, c



FURMAN UNIVERSITY

22 Fitzer, b	39 Dunham, g	66 Penn, b
23 Zima, b	40 Lemmond, t	67 Moore, t
24 Spitzer, e	41 Wofford, g	68 Smith, t
25 Teal, b	42 Shetley, b	69 Driscoll, t
26 Colby, e	43 Knight, c	70 Lanley, g
27 Walters, b	44 Martin, b	81 Looper, t
28 Moore, c	45 King, e	82 Link, t
29 Hatcher, c	46 Ring, g	92 Hillard, t
30 Patrick, b	47 Lipscomb, c	93 Richardson, g
31 Jeffcott, b	48 Hinson, t	94 Weigel, g
34 Baumgardner, g	52 Martin, b	95 Tuten, g
35 Huppel, b	53 Norman, e	96 Thomas, b
36 Fleming, t	64 McClain, c	97 Babbs, g
37 Culbertson, g	65 Nease, c	98 Clayton, b
38 Cornwall, t		

1ST 2ND 3RD 4TH TOTAL
QUAR. QUAR. QUAR. QUAR.

WOLFPACK				
HURRICANE				

Furman Squad on Following Page

... and Eddie Dooley today

... with his accurate Chesterfield football forecasts every Thursday, highlights and complete scores every Saturday.

Join the millions who know this— a pack of Chesterfields means *more pleasure* than you can find anywhere else in a cigarette—Chesterfields Satisfy.

THE WOLFPACK GRIDIRON

Furman University Football Squad

Player	Pos.	Age	Hgt	Wgt	Yr on V.	Home Town	Player	Pos.	Age	Hgt	Wgt	Yr on V.	Home Town
Lloyd Coley	E	19	6	180	2	Newton, N. C.	Farris Weigel	G	21	6-3	200	2	Jacksonville, Fla.
Ray Dorman	E	20	6-2	185	2	Jacksonville, Fla.	Hugh Wofford*	G	21	6-1	185	2	Starr, S. C.
Hubert King	E	19	6-2	180	2	Ranger, Texas	Gates Barker	C	18	6	180	1	Ranger, Texas
Carl Nolan*	E	21	6-1	195	3	Greenville, S. C.	Don Kesler*	C	22	6-2	192	3	Griffin, Ga.
Coley Spigner	E	23	6	180	3	Windsboro, S. C.	Holman Knight	C	22	5-11	175	3	Holly Hill, S. C.
R. L. Walters	E	19	5-11	170	1	Monroe, N. C.	Ed. Clayton	B	21	5-10	176	2	Brevard, N. C.
William Cornwall	T	19	6	198	1	Chester, S. C.	Robert Fitzer	B	19	5-10	170	1	Richland, Va.
James Driscoll	T	20	6	190	3	Monticello, Ga.	Grover Huppel*	B	21	6-1	175	2	Orlando, Fla.
Sam Fleming	T	20	6-1	185	1	Landford St., S. C.	Warren Jeffcott	B	21	5-11	205	1	Fort Myers, Fla.
Joe Hilliard	T	19	6	196	1	Anderson, S. C.	C. V. Lipscomb	B	21	6	165	2	Gaffney, S. C.
Cecil Hinson*	T	22	6-2	203	2	Heath Springs, S. C.	Dan Martin	B	21	5-10	165	2	Toocoo, Ga.
Eugene Linke*	T	24	6-2	200	2	Danville, Va.	James Martin	B	19	5-9	165	1	Fair Forest, S. C.
Thomas Moore	T	19	6-1	200	2	Loganville, Ga.	Johnson Moore	B	19	6	170	2	Chester, S. C.
J. W. Babb*	G	21	6-1	200	3	Princeton, S. C.	George Patrick*	B	20	6	203	3	Griffin, Ga.
Harry Baumgardner*	G	22	5-11	185	3	Charlotte, N. C.	Herbert Penn	B	20	5-11	180	2	Bishopville, S. C.
Lyn Culbertson	G	19	5-11	190	1	Fountain Inn, S. C.	Roten Shetley*	B	20	5-10	191	2	Wolf Creek, Tenn.
Orvell Duncan	G	19	6-1	182	1	Greenville, S. C.	Everett Ten*	B	21	5-11	180	3	Bishopville, S. C.
Roger Langley	G	21	6	180	1	Griffin, Ga.	Carl Thomas	B	21	5-10	161	1	Hampton, S. C.
Mallory Smith*	G	21	5-11	175	3	Greenville, S. C.	Ray Zima	B	21	6	180	1	Merrick, N. Y.
Darnell Richardson	G	20	6	190	2	Flat River, Mo.							
Wilson Tuton	G	20	5-11	170	2	Vernville, S. C.							

* Denotes Lettermen.

1937 WOLFPACK BASEBALL TEAM



Back Row—Lovelace, Bruinooge, Hoyle, Gill, Hoover, Green, Thorne; Third Row—Steele, Cutchins, Rabb, Mann, Davidson, Beam, Hendren, Miller; Second Row—Barb Norwood, Dalrymple; Gadd, Hines, Sandfoss, Griffin, Doak; Front Row—Berry, Berlinski, Hart.

WE CHERISH STATE COLLEGE

As One of North Carolina's Most Outstanding Institutions of Learning

* * *

Heilig & Meyers

Is Raleigh's Outstanding Institution for
Furniture of Quality in Both Period
Reproductions and Modern
Designs

HEILIG & MEYERS Furniture Company
135-137 S. Wilmington St. Raleigh

SEIBERLING

Vapor Cured Tires

And Auto - Household and
Miscellaneous Accessories

* * *

BLACKWOOD'S, INC.

Carolina's Largest Independent
Tire Jobber

RALEIGH
404 Hillsboro St.
Phone 4568

ROCKY MOUNT
130 Sunset Ave.
Phone 1200

DURHAM
434 W. Main St.
Phone L-7281

FAYETTEVILLE
118 Donaldson St.
Phone 2460

For Those Who

Appreciate

FINER Leather Jackets

CALL ON

Lewis Sporting Goods Co.



To Gain Ground!

A yard or two of ground may decide today's football game.

The value of ground is even more decisive in the every-day life of the community.

Consult us regarding your Insurance Problems. Your questions will be answered and suggestions made without obligation to you.

ROBERT G. YANCEY

Agent

407-9 Lawyers Building

RALEIGH, N. C.

THE WOLFPACK GRIDIRON

W. H. King Drug Co.

WHOLESALE DRUGGISTS

Raleigh, N. C.



Manufacturers of Page's CRU-MO

GET INTO A HUDDLE :::

When the boys on the field get together in a huddle, you know they're planning something extra special.

Take a tip from the boys.

For something extra special in the way of mid-afternoon or evening refreshment, get into a huddle with the gang at

FRANKLIN'S CAROLINA PHARMACY

Carolina Hotel

:-: RALEIGH

:-:

Phone 142

Prescription Service a Specialty

HEADACHE

Get QUICK Relief

WITH

CAPUDINE

A Liquid — It Acts Fast

L
U
N
C
H



D
I
N
N
E
R

YOU BE THE JUDGE



BILL WINDLEY



HOWELL STROUP



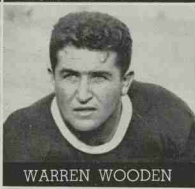
STEVE ACAI



JOHN SAVINI



TONY DIIESO



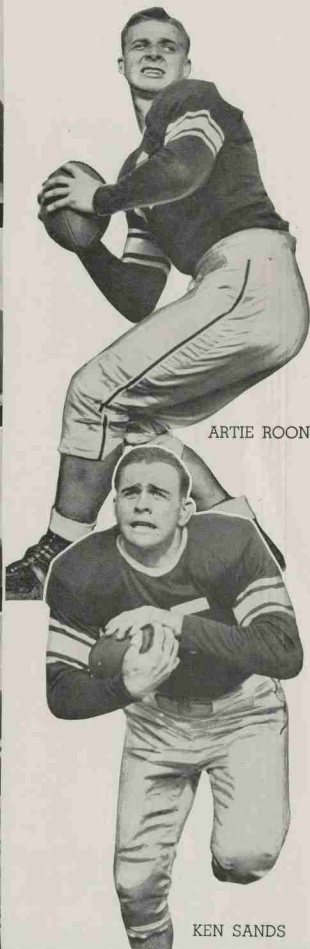
WARREN WOODEN



BILL MATHENY



TED JOHNSON



ARTIE ROONEY

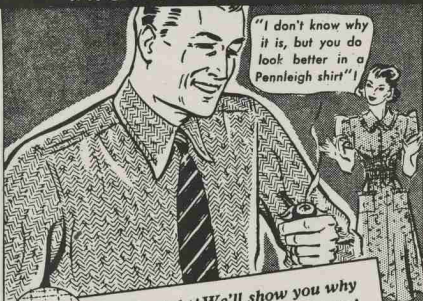
KEN SANDS

WOLFPACK

THE WOLFPACK GRIDIRON

GRANTS

KNOWN FOR VALUES



*She's right! We'll show you why
in Grants new Fall Pennleighs!*

Men's Shirts

1.00

First of all, they're correctly sized and fuller cut! The fine quality broadcloth's pre-shrunk and the colors never fade! The neat non-wilt collar always looks crisp! New darker stripes and fancies for Fall. White and plain colors. Compare these shirts with those found at \$1.69 to \$1.95. Sizes 14½ to 17.

W. T. GRANT Co.

212 Fayetteville St., Raleigh, N. C.

THE WOLFPACK GRIDIRON



Every Service For Your Car

Motors Reconditioned - Brake
Relining - Duco Painting - Safety
Glass Installed - BEAR SYSTEM
Wheel and Chassis Aligning
Wrecked Cars Completely Rebuilt
Open 24 Hours Every Day
Wrecker Service

JOHN W. EVANS' SON

Morgan & Blount Sts., Raleigh, N. C.

A BOOST TO STATE COLLEGE'S WOLFPACK



DR. R. R. SERMON
N. C. State Trainer
and Basketball Coach



CHICK DOAK
N. C. State Baseball
Coach

*Raleigh Beauty
Shoppe*

WE SPECIALIZE IN ALL LINES OF
BEAUTY CULTURE

PHONE 2006 109½ FAYETTEVILLE ST.
RALEIGH, N. C.

HEADQUARTERS FOR—
DIAMONDS - WATCHES -
SILVERWARE - JEWELRY

—of the Better Kind

Neiman's
INC

JEWELERS-SILVERSMITHS
RALEIGH, N.C.

Before and After the

GAMES

Visit

BOON-ISELEY DRUG CO.

118 Fayetteville Street

TOASTED SANDWICHES and
FOUNTAIN SERVICE

On Your Way...

Both to and from the Games you pass the

STUDENTS SUPPLY STORE

It is one of STATE COLLEGE'S "Institutions" and has kept apace with the times in all the modern fixtures and services.

Make it a point to stop in for refreshments while you're
"On the Campus"

Every Day in Every Way State College Gets Better and Better

STUDENTS SUPPLY STORE

Y. M. C. A. BUILDING — N. E. CORNER OF STADIUM

Green Grill

"The Best Training Table
in Town."

GREEN GRILL

RALEIGH, N. C.

AT THE GAME
AND EVERYWHERE



The ALL-AMERICAN
THIRST QUENCHER

WOLFPACK

MICKEY SULLIVAN



ANDY PAULOVSKY



CUTIE CARTER



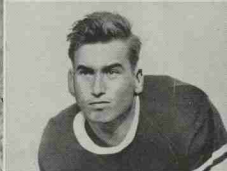
BOB CATHEY



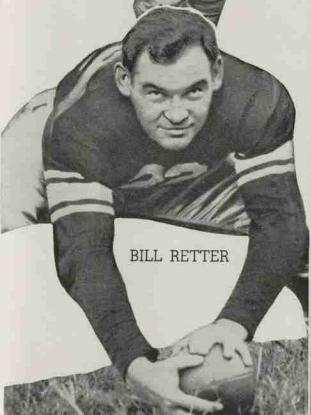
GEORGE FRY



BUNNIE HINES



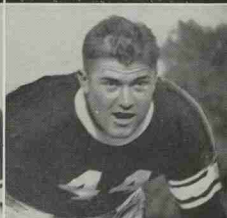
CHARLIE SMART



BILL RETTER



RALPH BURT



WALT NOVICK



AFTER THE GAME—
MEET YOUR
FRIENDS AT

WALGREEN'S

Here's the Convenient, Congenial Place to Gather — Where You Find Good Food, Good Drinks, Good Service. Get the habit of using Walgreen's as Your Headquarters.

You're Always Welcome!

Fayetteville
and Hargett Sts.

"In the Heart of
Raleigh"



FOR STYLE AND QUALITY . . .

SHOP AT

*Fine's
Men's Shop*

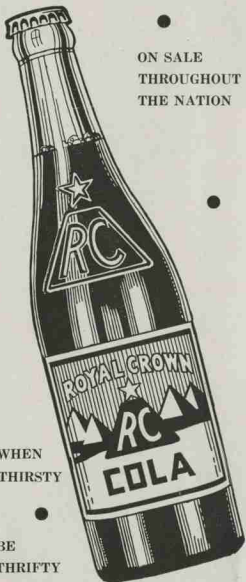
HATTERS - FURNISHERS



Corner Fayetteville and Hargett Streets
RALEIGH, N. C.

REFRESHMENT AT IT'S BEST

ON SALE
THROUGHOUT
THE NATION



WHEN
THIRSTY

BE
THRIFTY

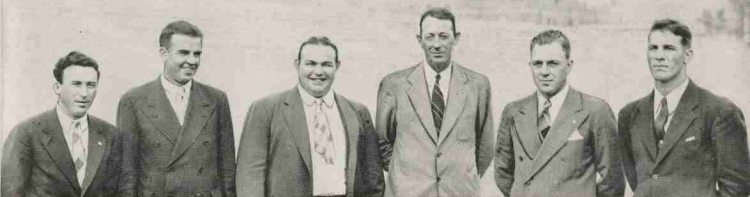
Bottled By

RALEIGH NEHI BOTTLING CO.

ALSO BOTTLERS OF

PAR-T-PAK AND NEHI BEVERAGES

STATE COLLEGE COACHES



Reading Left to Right: WILLIE DUSTY, General Assistant; NIG WALLER, Freshman Coach; HERMAN HICKMAN, Varsity Line Coach; WILLIAMS (DOC) NEWTON, Head Coach; DR. BOB WARREN, Backfield Coach; ALEX REGDON, Freshman Line Coach.

Corsages by FALLON'S Are Distinctive

: SEND HER A CHRYSANTHEMUM TO WEAR AT THE GAME :

J. J. FALLON COMPANY, INC.

Phone 4070

::

"We Grow the Flowers We Sell"

1937 - 1938 RED TERRORS



Top Row—Satterfield, Hamilton, Cromartie, Payne; Middle Row—Crawford, York, Stroup, Sapp, Dewey; Bottom Row—Hill, Mann, Jones, Berry, Von Osen, Honeycutt, Berlinski.

◆ ◆ TIME OUT ◆ ◆

A recent show advertised a chorus of seventy, but some of them didn't look to be a day over sixty-five.

— o —

Tom: "My wife talks to herself."

Russ: "So does mine, but she doesn't realize it—she thinks I'm listening."

— o —

Molly: "Can you get married on \$15 a week?"

Cordelia: "I suppose so, but you can't get divorced on it."

— o —

"Pop, what is a pedestrian?"

"A pedestrian, my son, is the raw material for an accident."

— o —

"Porter."

"Yes, madam, what is it you wish?"

"I just found two strange men in my apartment, and I want you to put one of them out."

— o —

Customer to Waiter: "Two eggs, please. Boil 'em four minutes."

Waiter: "Yes, sir. Be ready in a second, sir."

— o —

Chinaman: "Doc, what time you fixee tooth for me?"

Dentist: "Two-thirty, all right?"

Chinaman: "Yes, tooth hurty me all right, but what time you fixee?"

— o —

Newlywed Husband: "Honey, what in the world is the matter with this steak?"

Bride: "Why . . . , not a thing."

Husband: "But . . ."

Bride: "Well, I did burn it a little, but I put Ungentine on it."

— o —

Teacher: "Johnny, if five sheep were in a field, and one jumped out, how many would be left?"

Johnny: "There wouldn't be any left. You know arithmetic, but you don't know sheep."

— o —

Angus: "Just coming from the bank? So ye have money to put away?"

Donald: "I didna put money in the bank."

Angus: "Then ye drew some oot, or borrowed?"

Donald: "Nae, neither."

Angus: "Ah, weel, an' what did ye there?"

Donald: "I fillit my fountain pen."

Mrs.: "Haven't I made you what you are?"

Mr.: "Have I ever reproached you for it?"

— o —

Diner: "This butter is so hard I can't cut it."

Waiter: "Excuse me, sir; that's a bit of the kitchen soap, sir."

— o —

"Me a tramp? No, sir. I'm a member of de army of toil."

"I never saw you toil."

"I belong to de WPA."

— o —

Traffic Cop: "Don't you know what I mean when I hold up my hand?"

Lady Driver (meekly): "I ought to; I've been a school teacher for 25 years."

— o —

Restaurant Proprietor: "My old Ford turned turtle last week."

Patron: "Good grief, I thought this soup tasted funny."

— o —

Miss Catnip: "What do you expect to give up during Lent?"

Mr. Dogbone: "Oh, I'll give up bridge and play poker instead."

— o —

She: "I've just had a telegram saying that father has lost all his money."

He: "H'm, I always knew he'd find some way of preventing me from marrying you."

— o —

The other day Ole and Jens, who are novices at the game, went fishing. Strangely enough, they happened to hit a good spot and hauled in quite a bunch of Whoppers.

"By yee, das fine fishing hole—las mark das place and come back tomorrow," suggested Ole, and proceeded to pull up the anchor.

Then as they neared the shore, Ole asked, "Did you mark das place where ve caught dose fish?"

"You bet," answered Jens, "Ay poot cross mark on da side da boat."

Ole snorted, "Well, lunkhead, how do you know ve'll get das same boat tomorrow?"

After the Game—
**RALEIGH'S FINEST
THEATERS**

WHERE ENTERTAINMENT COSTS
SO LITTLE

AMBASSADOR

RALEIGH'S ULTRA-MODERN THEATRE

LAST TIMES
TONIGHT

SPENCER MICKEY
TRACY ROONEY

IN
"BOYS TOWN"

SUNDAY - MONDAY - TUESDAY

FRANCHOT JANET ROBERT
TONE GAYNOR MONTGOMERY

IN
"THREE LOVES HAS NANCY"

WEDNESDAY - THURSDAY

FRIDAY - SATURDAY

Frank Capra's
"YOU CAN'T TAKE IT WITH YOU"

With
JEAN LIONEL JAMES
Arthur Barrymore Stewart

CAPITOL

"Save Your Capital
at Your Capitol."

MAT. NIGHT
15c. 20c.

SUNDAY ONLY

GEORGE RAFT — SYLVIA SIDNEY
In "YOU AND ME"

MONDAY - TUESDAY

A Cast of Comedy Kings in a Laugh Riot

"SWING YOUR LADY"

Weaver Bros. and Elvira - Humphrey Bogart
Allen Jenkins

STATE

SUNDAY
MONDAY - TUESDAY
The 1938 Comedy
Sensation!

HAROLD
LLOYD

IN
"PROFESSOR
BEWARE"

Wednesday — Saturday

EDWARD
G. ROBINSON

IN
"Amazing
Dr. Clitterhouse"

PALACE

Sunday - Monday - Tuesday
A RINGSIDE SEAT TO A
1000 THRILLS—

"Under the Big Top"
with

JACK LARUE - ANNE NAGEL

— Wednesday — Thursday —

Frankie Darro - Paul Kelly

In

"Juvenile Court"

— Friday — Saturday —

Arizona Dynamite! . . . A Red-
Blooded Adventure of Mining
Days.

GEORGE O'BRIEN

In

"Painted Desert"

Plus FLASH GORDON Serial



FOOTBALL PENALTIES

by
LOU LITTLE

Head Coach, Columbia University
and Chairman, Football Coaches' Rules Committee



IT'S the middle of the fourth quarter. Two teams have been battling for more than fifty minutes without a score. Two offenses have threatened many times but the defenses, in turn, have stopped each short of a touchdown.

This time, the team for which you're rooting has the ball on the opponents' 35-yard line. It's second down, eight yards to go. The rival defense expects a forward pass. Your smart quarterback crosses them up and calls a deep reverse. The ball is passed, the behind-the-line exchange is made with a world of deception and speed. The No. 1 back is streaking around the weak-side. He outruns the close defenders, the defensive right halfback is blocked out of the picture and he dodges the safety man. It's a touchdown—a beautiful play. I don't blame you for shouting. There's the touchdown that probably wins the football game for your team.

But what's this? The stout little man in white knickers who has been umpiring this football game is running to the spot from which the ball was snapped, marking the spot and waving for the return of the ball. Now he's turning toward the stands, grasping his left wrist firmly with his right and turning so that all can see.

He's telling the two teams and the world that the brilliant touchdown doesn't count. He saw somewhere down there on the line an offensive player so far forget his gridiron Emily Post as to grasp the defensive player opposite him firmly by the leg and hold on. Now, this took place on the strong side of the line, well removed from any sphere of action which would have helped the ball carrier. But it was holding of the most flagrant type and it had to be called. One player's misdeed had cost his team a touchdown, fifteen yards of valuable territory and in all probability the football game.

That's why we try to teach the players the rules. The man who doesn't know the rules and who can't control himself can cause more damage than a dozen missed tackles or bad guesses by the quarterback in calling signals.

Of course, there are times when the rules infraction is due to over-eagerness. That's often true when teams are penalized for off-side, or a man in motion, or running into a kicker and that sort of thing. You'll notice in the rules book that such sins against the football code are not punished very severely. The penalty in such cases, and other similar ones, is only five yards. I think any coach will prefer to have a forward line which is occasionally penalized for being off-side than to have one which fears getting across the line too fast and thus fails to get the jump, or an even break, with the opposing line.

But look over the list of football misdemeanors which draw 15-yard penalties and you'll find that they are acts which must usually be intentional; or at least are so damaging to the other team that they must be rigorously discouraged.



One is the illegal use of hands and arms by the offense—the instance we cited as this article began. If the offense could use its hands, we just simply wouldn't have any football game. The offense would, or should, score a touchdown every other play. So there is logic in the severe 15-yard penalty.

The same is true in the levy of 15 yards for the failure of a man to come to a full stop of a second on a shift play. Back about a dozen years ago, the shifting teams in football threatened to throw the whole pattern of the game out of balance by giving the offense too much power. The aim of all these rules and penalties is to keep football as evenly balanced as possible between the attack and defense. But the teams which employed the shift were, in the minds of the people who opposed the shift, virtually taking a running start. Old Dr. Williams of Minnesota, the originator of the "Minnesota Shift", didn't believe that, of course; nor did Knute Rockne, whose Notre Dame shift became the model for almost a third of the football teams in the United States.

But the rules committee did believe that here was a play which, skillfully developed, would tend to give the attack entirely too much advantage. So the rule was changed, first requiring a definite stop, then designating that stop as one second in duration and calling for a 15-yard penalty as punishment for infraction.

If you'll look down through the list of penalties included on another page in this program, you'll see that this theory extends throughout the code. The list of penalties is designed to accomplish two things—protect the individual player, and keep the game in balance, as between offense and defense.

So roughing the kicker calls for a 15-yard penalty. The kicker is defenseless as he punts the ball. If they were to go to work on him without fear of penalty, the poor kicker would live a hazardous existence. That's a case of protection for the individual's personal safety.

On the other hand, interference by the defense with the offensive man catching a forward pass calls for a first down at the spot of the foul. That can be as much as a 15, 25, or even 50-yard penalty. It can be, and often is, one of the toughest penalties in the book. But it has to be there, else the defense simply would go about knocking down eligible receivers and we'd as well go back to the medieval football days of pre-1905 when they pulled and pushed and that's about all.

There are too many penalties in the book to discuss them all. But I think I've given you an idea of the purpose of them. They're not designed to hamper your favorite team, but to protect the players of both teams and to make of the game a contest that is a fair and thrilling one both for the player and for you, sitting up here in the stand.

Greetings!

The Greatest Hotel Value
IN Raleigh NORTH CAROLINA
Hotel Sir Walter

*Largest and
Finest*

350 Rooms . . .
all with tub or
shower



*All Outside
Rooms*

With Bath
Beginning at \$2.50
daily

Carolina's Meeting Place

Only Hotel in Raleigh with *Circulating Ice Water*
and permanent Radios in every room ~ ~ ~
Air Conditioned Coffee Shop and Main Dining
Room with Dinner and Dance Music ~ ~ ~

A ROBERT MEYER HOTEL

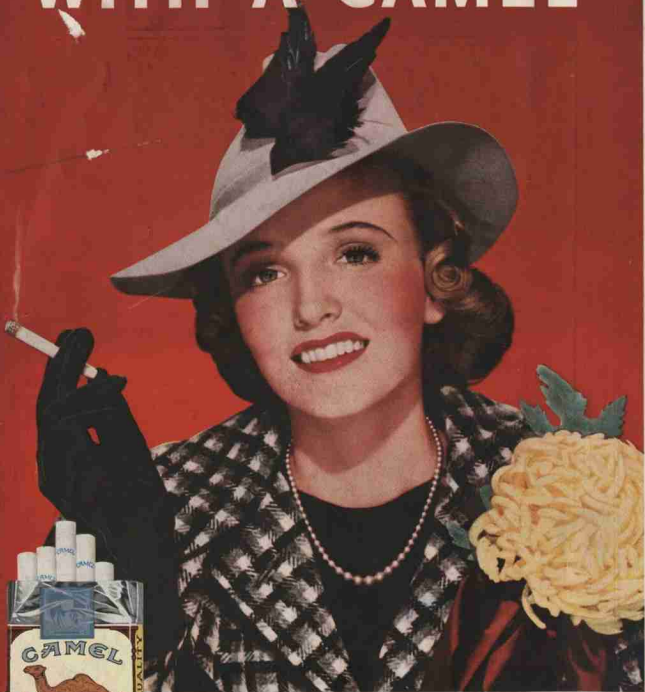
Roland A. Mumford, Manager

Garage Adjoining

HOTEL SIR WALTER

"Visit the Coffee Shop"

**"GET A LIFT
WITH A CAMEL"**



Copyright, 1938, H. J. Reynolds Tobacco Company, Winston-Salem, N. C.

COSTLIER TOBACCOS

**Camels are a matchless blend of finer,
MORE EXPENSIVE TOBACCOS — Turkish and Domestic**