

# THE WOLFPACK GRIDIRON

STATE vs. WAKE FOREST  
RIDDICK STADIUM

25c

RALEIGH, N. C.  
OCTOBER 15, 1938  
8:00 P. M.

MAC RAG  
CILLIUS  
38

A RALEIGH JUNIOR CHAMBER OF COMMERCE ENTERPRISE

**SAY PAL!**

*What about this for a Pleasant Week-End?*

**DOC NEWTON'S BOYS**  
Will Furnish You All The Thrills

*The*

**HOTEL CAROLINA**

Will Provide You With Every Comfort

*250 Rooms Each With Bath*

**GOOD FOOD**

*(At Popular Prices)*

Radios and Every Modern Convenience



**ROBERT I. LEE, Manager**

# THE WOLFPACK GRIDIRON

*Official*  
FOOTBALL  
*Program*



WADE ISON, Editor

## HOME - COMING AND DAD'S DAY

Stunts! Pep Meeting! Bonfire! Football! Luncheon!  
Dance! — Gala Events! Attend!

### FRIDAY, OCTOBER 21

7:00- 7:30 Broadcast Pep Meeting  
7:30- 8:30 Stunt Night  
8:30 Bonfire

### SATURDAY, OCTOBER 22

9:00-12:00 Registration in Y. M. C. A.  
12:30- 1:00 Luncheon in West Cafeteria with Coach  
Newton as guest speaker. Music  
2:30- 5:00 Football — State vs. Furman  
5:00- 6:30 Open house in Dormitories and Fraternity  
houses  
9:00-12:00 Homecoming Dance in Frank Thompson  
Gymnasium

SPONSORED BY BLUE KEY AND GOLDEN CHAIN

J. F. MILLER, Professor of Physical Education

J. L. VONGLAHN, Business Manager

### COACHING STAFF

WILLIAMS S. NEWTON, Head Coach  
DR. ROBERT S. WARREN, Backfield Coach  
HERMAN HICKMAN, Line Coach

NIG WALLER, Freshman Coach  
WILLIE DUSTY, Assistant Coach  
ALEX REGDON, Assistant Coach

---

THE WOLFPACK GRIDIRON is published for all N. C. State Home Football Games by the Sports Publicity Bureau in cooperation with the Athletic Department. Address all communications to Wade Ison, State College, Raleigh, N. C.

*After the Game—*  
**RALEIGH'S FINEST  
THEATERS**

WHERE ENTERTAINMENT COSTS  
SO LITTLE

## AMBASSADOR

RALEIGH'S ULTRA-MODERN THEATRE

TODAY - SUNDAY  
MONDAY - TUESDAY

### "FOUR DAUGHTERS"

Receiving Unanimous Praise From All  
Who See It—

WITH

Rosemary, Priscilla and Lola Lane  
Gale Page - Claude Rains

WEDNESDAY - THURSDAY  
FRIDAY - SATURDAY

SPENCER TRACY  
MICKEY ROONEY

—IN—

### "BOYS TOWN"

## CAPITOL

*"Save Your Capital  
at Your Capital."*

MAT. 15c, NIGHT 20c  
CHILDREN 10c

SUNDAY ONLY

JAMES STEWART — MARGARET SULLAVAN  
In

### "SHOPWORN ANGEL"

MONDAY - TUESDAY

Mickey Rooney - Freddy Bartholomew

In

### "LORD JEFF"

WEDNESDAY "TOY WIFE" with LUISE RAINER

## STATE

LAST TIMES SUNDAY—  
Lloyd Nolan — Gail Patrick  
In

### "King of Alcatraz"

MONDAY - TUESDAY  
On Stage

### Cascade Revue of 1939

On Screen

### "Mysterious Mr. Moto"

With

PETER LORRE

### "MEET THE GIRLS"

With

JUNE LANG

FRIDAY - SATURDAY  
DIXIE DUNBAR

In

### "FRESHMAN YEAR"

With

ERNEST TRUEX

## PALACE

STARTS SUNDAY  
A RIOT OF FUN BELOW  
THE RIO GRANDE—

### "TROPIC

### HOLIDAY"

With

BOB BURNS  
MARTHA RAYE  
DOROTHY LAMOUR  
RAY MILLAND

STARTS FRIDAY

NEW HOPALONG CASSIDY  
STORY . . . HOT WITH  
ACTION

### "PRIDE OF THE WEST"

With WILLIAM BOYD

# JOHNNIE "Calls" THE SIGNALS!

 Crawling or pushing, 5 yards; helping ball carrier, 15 yards.	 Holding. (Penalty—by offense, 15 yards; by defense, 5 yards.)	 Delay of game or extra time-outs. (Penalty, 5 yards.)	 Player illegally in motion. (Penalty, 5 yards. If from shift or huddle, 15 yards.)	 Interference with forward pass, or pass touching ineligible player. (Penalty, if interference by offense, 15 yards; otherwise, ball goes to opponent at point of foul.)	 Illegal forward pass.
 Safety.	 Penalty refused. Incomplete pass, missed field goal or conversion, both sides off-side, etc.	 Unnecessary roughness, illegal defensive use of the hands, clipping, running into or roughing the kicker. (Penalty, 15 yards.)	 Score—touchdown, field goal, or conversion.	 Offside or violation of kick-off formation. (Penalty, 5 yards.)	 Time out.

 **FOR TRUE SMOKING PLEASURE**  
Call for **PHILIP MORRIS**

## Penalties

- Holding by defensive side
- Crawling
- Attempt to draw opponents offside
- Delaying game
- Taking more than two steps after fair catch

- Holding by side in possession of ball
- Hurdling
- Coaching from sidelines
- Intentional grounding of forward pass. In addition to 15 yard penalty, team also loses down.
- Interference with fair catch
- Substitute communicating before first play
- Tackling or throwing fair catcher

- Foul within one-yard line: half distance to goal line
- Interference with forward pass by defense: loss of the ball

### LOSS OF FIVE YARDS

- Illegal tackling or blocking
- Offside
- Encroachments on neutral zone
- Feint to snap ball
- Illegal position
- Interference with opponents before ball is put in play

### LOSS OF FIFTEEN YARDS

- Tripping
- Leaving field during one-minute intermission
- Unsportsmanlike conduct
- Piling up
- Tackling out of bounds
- Pushing, pulling, interlocking interference, etc.
- Running into opponents illegally

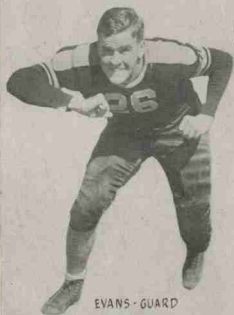
### OTHER PENALTIES

- Slugging: half distance to goal and disqualification
- Flagrant roughing of kicker: 15 yards and disqualification

- Substitute failing to report
- Backfield in motion
- Taking time out more than three times during half
- Player out of bounds
- Running into kicker

- Individual going on field without permission
- More than one attendant going on field
- Failure to come to one-second stop in shift play
- Roughing the kicker
- Clipping
- Illegal return to game
- Team not ready to play at scheduled time

- Any act committed by an outsider but affecting the game: the referee is empowered to impose such penalty as justice may require



EVANS · GUARD



WIRTZ · BACK  
CAPTAIN



BALONIS · GUARD

# *Demon Deacons*



WEBB · GUARD



VANDERIES · END



TINGLE · GUARD

# To State College • • and the Wolfpack

We pledge our support  
We assure you a  
boost at every • •  
opportunity

WE are proud that State College  
awarded the printing of this  
program to us .. We are also proud  
to have a State College man in our  
organization .. BOB SESSOMS  
Class of '31



THE winner in  
every printing  
test ♦ No matter  
how complicated  
we always GIVE  
satisfaction ♦ Our  
one ambition is to  
give SUPERIOR  
PRINTING

## MITCHELL Printing Company

*Printing that Satisfies and Prices to Suit*

115-117 West Hargett Street ♦ Phone 18 ♦ RALEIGH, North Carolina

### WOLFPACK BOOSTERS

*Bernhard's*  
WHERE  
BETTER LIVING BEGINS  
HOTPOINT APPLIANCES

508 HILLSBORO ST. :: RALEIGH, N. C.

FOR N. C. STATE — WIN OR LOSE!

BLAN CHAPMAN, '33

STORR ENGRAVING CO.

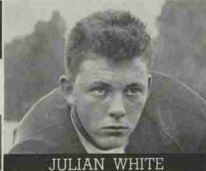
RALEIGH

# WOLFPACK

ED COON



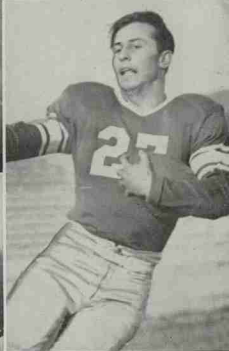
PAT FEHLEY



JULIAN WHITE



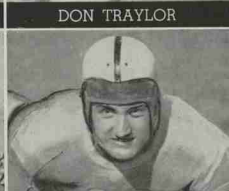
FREDDY MASTROLIA



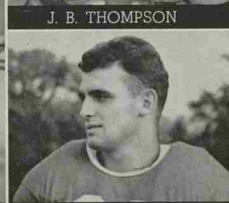
DON TRAYLOR



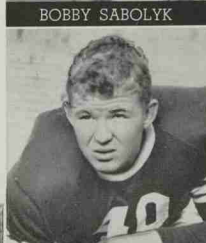
BOBBY SABOLYK



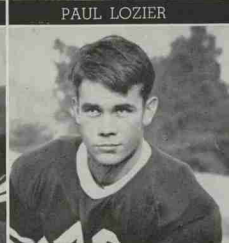
J. B. THOMPSON



PAUL LOZIER



FRED GARDINER



MICKEY THOMPSON



Yesterday  
Today  
Tomorrow



"It Pays to Play"

## AN ENTRY IN THE SPORTS FIELD THAT ALWAYS CLICKS!

Year after year Rawlings marches on designing and building Athletic Equipment that sets the pace in design, quality, stamina; Equipment that is nationally known and approved by players of all sports for its distinctive Rawlings Qualities.

Whatever your sport there is Rawlings  
Equipment to aid your game

Distributors

BOCOCK - STROUD COMPANY  
RALEIGH and WINSTON-SALEM



**RAWLINGS MANUFACTURING CO.**

ST. LOUIS

-:-

-:-

:

MISSOURI



PROF. J. F. MILLER  
Professor of Physical Education

RALEIGH'S LARGEST AND FINEST

## Drug Store

# Eckerd's

222 Fayetteville Street

"Creators of Reasonable Drug Prices"



PATENT MEDICINES -:- COSMETICS

DRUGS -:- SUNDRIES

FOUNTAIN and LUNCHEONETTE SERVICE

We Invite You to Visit Our New Store :-

Air Conditioned Luncheonette Open Until 8:00 P.M. After Each  
State College Football Game

**McLELLAN'S**

230-32 Fayetteville St.

:-

:-

:-

:-

RALEIGH, N. C.



Sets the Pace for

Young Men's Clothing and Haberdashery

213 Fayetteville St.

:-

RALEIGH

"DEPENDABILITY"

*College Court Pharmacy*

C. RHODES

:-

Proprietor



FOR THE BIG GAME—THE GAME OF LIFE

## *Cheap Electricity*

**SAVES TIME, WORK, AND MONEY**

Whether the job to be done is in the home, store, office, or factory an investigation will prove to your satisfaction that it can be done in **LESS TIME**, with **LESS EFFORT**, and at **LESS EXPENSE** with Cheap Electricity.

**CAROLINA POWER & LIGHT COMPANY**

---

A North Carolina Institution

# CHARLES Stores Company

North Carolina's  
Economy Store  
For All the Family

PLENTY OF KICKS  
BUT NO COMPLAINTS



Plenty of LONG kicks, too! For every record kick ever recorded in football was made with a Spalding Official Ball.

In fact, the whole history of the Spalding J.5-V Official Intercollegiate Football is liberally sprinkled with record-breaking performance.

*A. G. Spalding & Bros.*

ATHLETIC GOODS MANUFACTURERS

**BIGGER - BETTER**



*Pepsi-Cola*

A delicious,  
energy  
building  
cola drink.  
Its name is  
founded  
on purity.

**WORTH A DIME**

Distributed by the

**Pepsi-Cola Bottling Company**

2513 Fairview Road  
RALEIGH, N. C.

IT'S A WINNER! - - -

**WHITE'S**  
**Sir Walter Raleigh**  
**Ice Cream**

- - - "There is a Difference"

**THE WOLFPACK**

Uses  
**O'SHEA**

QUALITY and SERVICE have made O'SHEA'S  
Football Jerseys and Sweaters the choice of  
Leading College and University Coaches  
throughout the country.

**BE SMART**  
**USE O'SHEA**

**O'SHEA KNITTING MILLS**

Athletic Knitted Wear for Every Sport  
2701 N. Pulaski Road -> CHICAGO

WE'RE FOR N. C. STATE— WIN OR LOSE!  
INSURE WITH US AND YOU **CAN'T** LOSE!



**MUTUAL INSURANCE AGENCY**

HUGH H. MURRAY, Jr. ('32), Manager



313 Lawyer's Bldg.

**RALEIGH**

Phone 3091

THE WOLFPACK GRIDIRON

COMPLIMENTS OF

F. W.  
Woolworth  
Company

224-226 Fayetteville St.

Raleigh, N. C.

A Double  
Sweetheart



Copyright, 1938, by  
F. Lorillard Co., Inc.

Old Gold's prize crop tobaccos  
are double mellow, double  
sealed in double Cellophane  
for true freshness.



For Finer, FRESHER Flavor,  
Smoke Double-Mellow Old Golds

RALEIGH

THE

Progressive  
Capital of a  
Progressive  
State



RALEIGH CHAMBER  
of COMMERCE

DIAMONDS

WATCHES -- SILVERWARE



GIFTS

For All Occasions



BOWMAN'S  
JEWELERS

15 West Hargett Street  
RALEIGH, N. C.

THE WOLFPACK GRIDIRON

# All-American Choice for "time out"



*The pause  
that refreshes*

**Capital Coca-Cola Bottling Co.** Telephone 542  
RALEIGH, N. C.

THE WOLFPACK GRIDIRON

# North Carolina State College Squad

Player	Pos.	Age	Hgt	Wgt	Yr.on V.	Home Town	Player	Pos.	Age	Hgt	Wgt	Yr.on V.	Home Town
Fred Gardner*	E	19	6-1	200	2	Smithfield, N. C.	John Savini*	G	20	6-1	195	2	N. Hanover, Mass.
John Tatum	E	21	6-1	190	1	McColl, S. C.	Steve Acai*	G	23	5-8	187	3	Donora, Pa.
Charley Smart	E	22	6	175	1	Concord, N. C.	Bill Matheny*	G	25	5-11	203	3	Pulaski, Va.
Mickey Sullivan*	E	22	5-11	195	2	Staten Island, N. Y.	J. D. Jones	G	19	5-10	170	1	Asheville, N. C.
Mickey Thompson	E	20	6-2	190	1	Weeksville, N. C.	Mae Williams	G	18	5-10	175	1	Raleigh, N. C.
Monte Crawford	E	20	5-11	175	1	Spartanburg, S. C.	Bill McIver	G	19	5-11	175	1	Clearwater, Fla.
Wayland Stuart	E	21	6-1	160	1	Winston-Salem, N. C.	Cutie Carter	C	20	5-9	165	1	Raleigh, N. C.
Phil Avery	E	19	6	175	1	Morgantown, N. C.	Howell Stroup	C	19	6-1	195	1	Cherryville, N. C.
Wade Brown	E	18	6-3	200	1	Rockwell, N. C.	Bill Retter*	C	22	5-10	206	2	Easton, Pa.
Ed (Ty) Coon*	T	23	6-1	200	2	Watertown, Conn.	Don Traylor	QB	21	5-9	165	2	Murfreesboro, N. C.
Walt Novick	T	19	6	200	2	Frankville, Pa.	Tony DiYeso*	QB	21	5-8	175	2	White Plains, N. Y.
Gene Conrad	T	21	6-1	200	1	Charlotte, N. C.	Pat Fehey	HB	20	5-10	175	1	Easton, Pa.
J. B. Thompson*	T	21	6-2	195	2	Mount Holly, N. C.	Andy Pavlovsky†	HB	22	6	185	2	Struthers, Ohio
George Fry*	T	22	6-1	190	3	Raleigh, N. C.	Bobby Sabolyk*	HB	22	5-9	175	2	Yonkers, N. Y.
Ralph Burt	T	19	6	200	1	Raleigh, N. C.	Artie Rooney*	HB	22	5-10	185	2	Pittsburgh, Pa.
Julian White	T	19	6	195	1	Raleigh, N. C.	Dick Watts	HB	18	5-11	165	1	Baldwin, N. Y.
Bill Windley	T	20	5-11	195	1	Pantego, N. C.	Paul Lozier*	FB	20	6-1	208	2	Grantwood, N. J.
Freddy Mastrolin*	G	23	5-10	180	3	East Boston, Mass.	Kenneth Sands*	FB	25	6	180	2	Pulaski, Va.
Bunnie Hines*	G	22	5-10	165	3	Winston-Salem, N. C.	Bob Cathey	FB	20	5-10	175	1	Charlotte, N. C.
Ted Johnson	G	20	6	185	1	Faw Creek, N. C.							
Warren Wooden*	G	22	5-9	180	3	Baltimore, Md.							

\* Denotes Lettermen 1937. † Denotes Letterman 1935.



## TEAMWORK . . .

*every man doing the right thing at the right time—makes a football team click.*

*When you drive into our service station, OUR teamwork starts to click—to give you complete, prompt, courteous, and efficient service.*

*For better service drive in to*

## TIRE SALES & SERVICE COMPANY, Inc.

"One Stop Super Service Station"

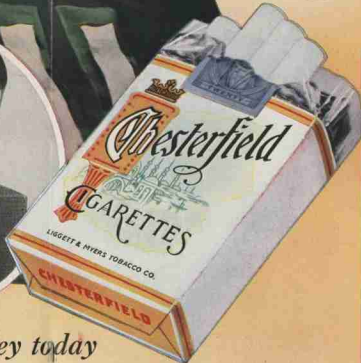
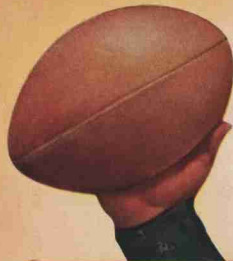
Hillsboro and Harrington Sts.

Phone 4700

RALEIGH, N. C.

# More Pleasure for MILLIONS

EDDIE DOOLEY  
All-American Star  
hitting the mark in '26



## STATE vs. WAKE FOREST Probable Starting Lineups

WOLFPACK	Pos.	DEACONS
Thompson (48)	LER	(37) Vanden Dries
Coon (42)	LTR	(32) Powers
Acai (29)	LGR	(81) Tingle
Retter (22)	C	(33) Pendergrast
Wooden (34)	RGL	(66) Trunzo
Fry (45)	RTL	(74) Pate
Sullivan (33)	REL	(42) Waivers
Rooney (19)	Q	(72) Wirtz (C.)
Pavlovsky (39)	LHR	(77) Gallovich
Fehley (24)	RHL	(48) Edwards
Sands (25)	F	(98) Ringold

### OFFICIALS

Dutch Eberts (Catholic U.)	Referee
Gus Tebell (Wisconsin)	Umpire
Fats Heath (North Carolina)	Head Linesman
Hap Perry (Elon)	Field Judge

... and Eddie Dooley today

... with his accurate Chesterfield football forecasts every Thursday, highlights and complete scores every Saturday.

Join the millions who know this—a pack of Chesterfields means more pleasure than you can find anywhere else in a cigarette—Chesterfields Satisfy.

## N. C. STATE COLLEGE

15 Carter, c	27 Traylor, hb	38 Lozier, hb
16 Smart, e	28 Stromp, e	39 Pavlovsky, hb
17 Dixon, qb	29 Asai, g	41 Avery, e
18 Rooney, qb	30 Carley, hb	42 Coon, t
19 Hines, g	31 Sabalyk, g	43 Burt, t
21 Mathewy, g	32 Wampler, t	44 Novick, t
22 Retter, e	33 Sullivan, e	45 Fry, t
23 Crawford, e	34 Warden, g	46 White, t
24 Fehley, hb	35 Watts, hb	47 Tatum, e
25 Sands, fb	36 Mastrois, g	48 Thompson, t
26 Savini, g	37 Conrad, t	49 Gardner, e



## WAKE FOREST COLLEGE

17 Crabtree, t	36 Welch, qb	68 Trunzo, g
21 Evans, g	37 Vanden Dries, e	72 Wirtz, (C.), qb
23 Pivec, t	39 Boatler, hb	75 Byrd, hb
25 Fuller, hb	40 Walsh, g	77 Gallovich, hb
26 Layton, hb	42 Walters, e	81 Tingle, g
26 Hallonis, g	44 Pittman, Jim, hb	82 Jett, e
27 Weaver, e	48 Edwards, hb	84 Woolbert, e
28 Powers, e	50 Mayberry, qb	92 Clark, e
31 Pendergrast, e	52 Pittman, John, fb	98 Ringold, fb
34 Pate, t	65 Kuchinski, fb	99 Spruill, g

	1ST QUAR.	2ND QUAR.	3RD QUAR.	4TH QUAR.	TOTAL
--	-----------	-----------	-----------	-----------	-------

WOLFPACK					
DEACONS					



THE WOLFPACK GRIDIRON

# Wake Forest Football Squad

Player	Pos.	Age	Hgt	Wgt	Yr on V.	Home Town	Player	Pos.	Age	Hgt	Wgt	Yr on V.	Home Town
Clem Crabtree*	T	19	6-1	215	2	Durham, N. C.	Charles Mayberry	QB	21	5-8	165	1	Mt. Airy, N. C.
Roy Evans*	G	21	6	195	3	Milktown, N. J.	John Pittman	FB	20	5	155	3	Rockingham, N. C.
Lawrence Pivec	T	20	5-11	190	1	Baltimore, Md.	Joe Kuchinski*	FB	23	5-11	200	2	Boston, Mass.
Dave Fuller*	HB	23	6	175	2	Wake Forest, N. C.	Louis Trunzo	G	21	5-8	180	1	Apollo, Pa.
John Weaver*	HB	19	5-7	165	1	Edenton, N. C.	George Wirtz*(C.)	QB	24	5-9	160	3	Princeton, Ind.
Tony Balonia	G	24	5-11	185	1	Homestead, Pa.	Rupert Pate*	TE	20	6-1	190	2	Goldsboro, N. C.
John Weaver*	E	22	5-7	165	3	Santa Rosa, Texas	Irvin Byrd	HB	19	5-9	175	1	Roanoke Rapids, N. C.
Allen Powers*	T	22	6	210	2	Denver, Tenn.	Richard Gallovich	HB	20	5-8	165	1	Vandergrift, Pa.
John Pendergast	C	20	6	185	1	Readville, Mass.	Tom Tingle	G	19	5-10	200	1	Birmingham, Ala.
Freddie Welch	QB	19	5-7½	155	1	Lexington, N. C.	John Jett	E	20	6-5	215	1	West Union, W. Va.
Bill Vanden Dries	E	20	5-10	180	1	Brooklyn, N. Y.	Eddie Woolbert*	E	20	5-10	170	2	Pleasantville, N. J.
Bill Eustler*	HB	20	5-7	150	2	Whiteville, N. C.	Walter Clark	C	19	5-9	175	1	Baltimore, Md.
Elwell Webb	G	18	5-10	185	1	Macesfield, N. C.	Jimmy Ringgold	FB	21	5-10	175	1	Baltimore, Md.
Paul Waivers	E	22	5-11	185	1	Keyport, N. J.	Vernon Spruill*	G	23	5-11	195	2	Edenton, N. C.
Jim Pittman	HB	20	5-7	155	3	Rockingham, N. C.							
Marshall Edwards	HB	22	6-1	190	1	Spry, N. C.							

\* Denotes Lettermen.

*Corsages by FALLON'S Are Distinctive*

: SEND HER A CHRYSANTHEMUM TO WEAR AT THE GAME :

J. J. FALLON COMPANY, INC.

Phone 4070

:-:

"We Grow the Flowers We Sell"

# Demon Deacons



GALLOVITCH • BACK



TRUNZO • GUARD

## WE CHERISH STATE COLLEGE

As One of North Carolina's Most Outstanding Institutions of Learning



### Heilig & Meyers

Is Raleigh's Outstanding Institution for Furniture of Quality in Both Period Reproductions and Modern Designs

**HEILIG & MEYERS** Furniture Company  
135-137 S. Wilmington St. Raleigh

## SEIBERLING

Vapor Cured Tires

And Auto - Household and Miscellaneous Accessories



### BLACKWOOD'S, INC.

Carolina's Largest Independent Tire Jobber

RALEIGH  
404 Hillsboro St.  
Phone 4568

DURHAM  
434 W. Main St.  
Phone L-7281

ROCKY MOUNT  
130 Sunset Ave.  
Phone 1200

FAYETTEVILLE  
118 Donaldson St.  
Phone 2460

For Those Who  
Appreciate

## FINER Leather Jackets

CALL ON

**Lewis Sporting Goods Co.**



## To Gain Ground!

A yard or two of ground may decide today's football game.

The value of ground is even more decisive in the every-day life of the community.

Consult us regarding your Insurance Problems. Your questions will be answered and suggestions made without obligation to you.

**ROBERT G. YANCEY**

Agent  
407-9 Lawyers Building  
RALEIGH, N. C.

# W. H. King Drug Co.

WHOLESALE DRUGGISTS

Raleigh, N. C.



Manufacturers of Page's CRU-MO

## GET INTO A HUDDLE :-:

When the boys on the field get together in a huddle, you know they're planning something extra special.

Take a tip from the boys. . . . .

For something extra special in the way of mid-afternoon or evening refreshment, get into a huddle with the gang at

### FRANKLIN'S CAROLINA PHARMACY

Carolina Hotel

--

RALEIGH

--

Phone 142

Prescription Service a Specialty

## HEADACHE

Get QUICK Relief

WITH

## CAPUDINE

A Liquid — It Acts Fast

L  
U  
N  
C  
H



D  
I  
N  
N  
E  
R

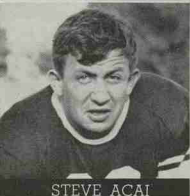
YOU BE THE JUDGE



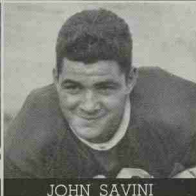
BILL WINDLEY



HOWELL STROUP



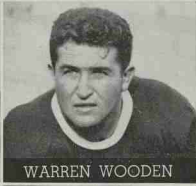
STEVE ACAI



JOHN SAVINI



TONY DIVESO



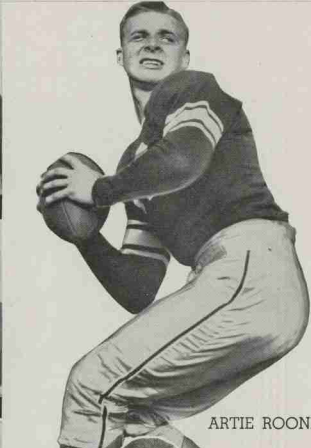
WARREN WOODEN



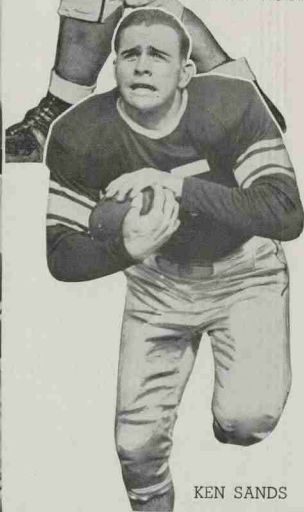
TED JOHNSON



BILL MATHENEY



ARTIE ROONEY



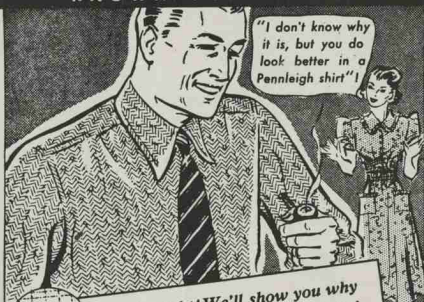
KEN SANDS

# WOLFPACK

THE WOLFPACK GRIDIRON

# GRANTS

KNOWN FOR VALUES



*She's right! We'll show you why  
in Grants new Fall Penneighs!*

**Men's Shirts**

**1.00**

First of all, they're correctly sized and fuller cut! The fine quality broadcloth's pre-shrunk and the colors never fade! The neat non-wilt collar always looks crisp! New darker stripes and fancies for Fall. White and plain colors. Compare these shirts with those found at \$1.69 to \$1.95. Sizes 14½ to 17.

**W. T. GRANT CO.**

212 Fayetteville St., Raleigh, N. C.

THE WOLFPACK GRIDIRON



Every Service For Your Car

Motors Reconditioned - Brake  
Retraining - Duco Painting - Safety  
Glass Installed - BEAR SYSTEM  
Wheel and Chassis Aligning  
Wrecked Cars Completely Rebuilt  
Open 24 Hours Every Day  
Wrecker Service

**JOHN W. EVANS' SON**

Morgan & Blount Sts., Raleigh, N. C.

**A BOOST TO STATE COLLEGE'S WOLFPACK**



DR. R. R. SERMON  
N. C. State Trainer  
and Basketball Coach



CHICK DOAK  
N. C. State Baseball  
Coach

*Raleigh Beauty  
Shoppe*

WE SPECIALIZE IN ALL LINES OF  
BEAUTY CULTURE

PHONE 2006

109 1/2 FAYETTEVILLE ST.

RALEIGH, N. C.

HEADQUARTERS FOR—

DIAMONDS - WATCHES -  
SILVERWARE - JEWELRY

—of the Better Kind

*Neiman's*

INC  
JEWELERS-SILVERSMITHS  
RALEIGH, N.C.

Before and After the

GAMES

Visit

**BOON - ISELEY DRUG CO.**

118 Fayetteville Street

TOASTED SANDWICHES and  
FOUNTAIN SERVICE

# On Your Way...

Both to and from the Games you pass the

## STUDENTS SUPPLY STORE

It is one of STATE COLLEGE'S "Institutions" and has kept pace with the times in all the modern fixtures and services.



Make it a point to stop in for refreshments while you're  
"On the Campus"

Every Day in Every Way State College Gets Better and Better



# STUDENTS SUPPLY STORE

Y. M. C. A. BUILDING — N. E. CORNER OF STADIUM

# Green Grill

"The Best Training Table  
in Town."

## GREEN GRILL

RALEIGH, N. C.

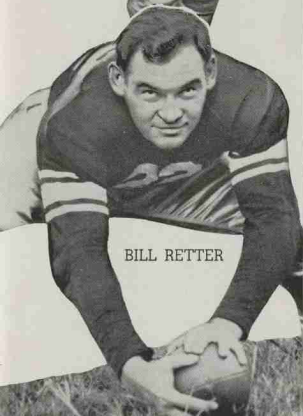
AT THE GAME  
AND EVERYWHERE



The ALL-AMERICAN  
THIRST QUENCHER

# WOLFPACK

MICKEY SULLIVAN



BILL RETTER



ANDY PAULOVSKY



CUTIE CARTER



GEORGE FRY



BOB CATHEY



BUNNIE HINES



CHARLIE SMART



RALPH BURT



WALT NOVICK





AFTER THE GAME—  
MEET YOUR  
FRIENDS AT

## WALGREEN'S

Here's the Convenient, Congenial Place to Gather — Where You Find Good Food, Good Drinks, Good Service. Get the habit of using Walgreen's as Your Headquarters.

You're Always Welcome!

Fayetteville  
and Hargett Sts.

"In the Heart of  
Raleigh"



FOR STYLE AND QUALITY . . .

SHOP AT

*Fine's  
Men's Shop*

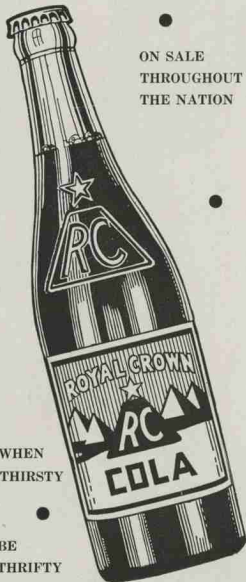
HATTERS - FURNISHERS



Corner Fayetteville and Hargett Streets  
RALEIGH, N. C.

## REFRESHMENT AT IT'S BEST

ON SALE  
THROUGHOUT  
THE NATION



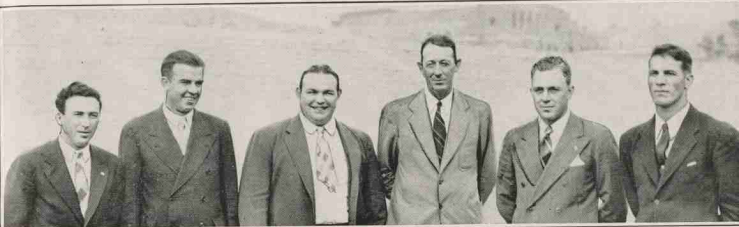
WHEN  
THIRSTY

BE  
THRIFTY

Bottled By

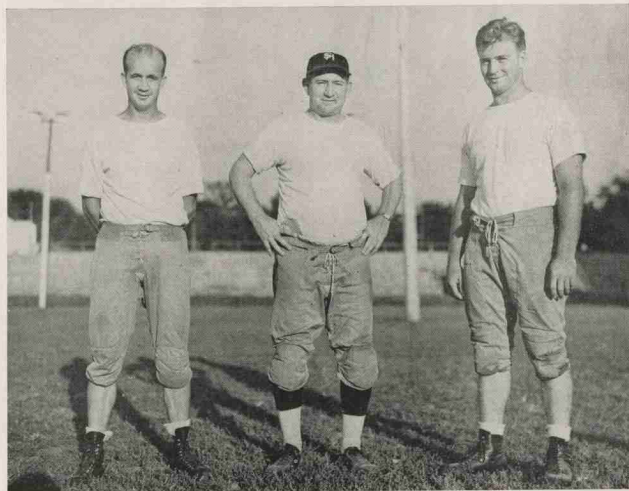
RALEIGH NEHI BOTTLING CO.  
ALSO BOTTLERS OF  
PAR-T-PAK AND NEHI BEVERAGES

## STATE COLLEGE COACHES



Reading Left to Right: WILLIE DUSTY, General Assistant; NIG WALLER, Freshman Coach; HERMAN HICKMAN, Varsity Line Coach; WILLIAMS (DOC) NEWTON, Head Coach; DR. BOB WARREN, Backfield Coach; ALEX REGDON, Freshman Line Coach.

## WAKE FOREST COLLEGE COACHES



MURRAY GREASON  
Backfield Coach

D. C. (PEAHEAD) WALKER  
Head Coach

TOM ROGERS  
Line Coach

THE WOLFPACK GRIDIRON



COL. JOHN WILLIAM HARRELSON  
*Dean of Administration, North Carolina State College*



JAMES W. WEAVER  
*Director of Athletics, Wake Forest College*



JOHN L. VONGLAHN  
*N. C. State  
Business Manager of Athletics*

WHEN IN RALEIGH —  
BE SURE TO VISIT

**CAROLINA  
FLORISTS, Inc.**

---

A Staunch  
State Supporter

---

FLOWERS FOR  
ALL OCCASIONS  
"Just Off Campus"

2806 Hillsboro Street  
Phone 3646  
RALEIGH, N. C.



PROF. H. A. FISHER  
*N. C. State  
Chairman of Athletic Council*

# AT IT AGAIN!

By JOHN MARSHALL  
Sports Editor of The Raleigh Times

**F**OOTBALL is more than a spectacle or a sport. It is a tradition, and the more ancient the rivalry the more deeply rooted becomes the tradition in the minds and hearts of the students, the players, and the communities on and near campuses where the respective colleges are located.

Fortunately, Raleigh and Wake County can look forward each year to one such clash which had its beginning in 1908, and which has continued without interruption since 1910. Taking place during State Fair week, the annual Wake Forest-State College football game has become a feature of the great fall festival that attracts visitors from all of North Carolina to our Capital City.

State Fair week recalls the early beginnings of intercollegiate football in North Carolina, for it was on a spot not more than 400 yards from Riddick Stadium on the afternoon of October 18, 1888, that a pioneer team from Wake Forest College met and defeated a team from the Chapel Hill brother of State College.

That historic contest took place just 50 years ago during a Fair Week that was quite as gay as it is today. State College did not open its doors until a year later, but when it did adopt football as a major sport, it selected its closest and most natural rival, Wake Forest College, to fill this preferred date on its annual schedule.

It may be, with so much tough opposition to be met, that the championship of Wake County alone will be at stake on the field of play this afternoon, but to the schools concerned and to their followers it is the big game of the year. Its speculations have been heard on both campuses since Fair Week Saturday of 1937 when an aroused Wolfpack emerged on the long end of a 20 to 0 victory.

When these ancient rivals clash, no punches are pulled. Other highly touted series games seem dull, somehow, when compared to the spectacular surges up and down the field that have been staged by Wake Forest and State in every annual battle since 1929.

The outcome of this, the 31st traditional game, is quite as uncertain as was the breathless 13 to 12 Deacon victory in 1934, when the winning point sailed over the cross-bar just 20 seconds before the final whistle sounded.

Past defeats notwithstanding, both Wake Forest and State possess football squads this year that are loaded with dynamite. They might not win conference championships, but they have what it takes to pull those upsets which slay the mighty. So when they clash—look out!



JETT · END

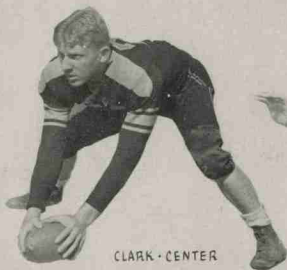


RINGOLD · BACK



MAYBERRY · BACK

# *Demon Deacons*



CLARK · CENTER



CRABTREE · TACKLE

THE WOLFPACK GRIDIRON

# Greetings!

The Greatest Hotel Value  
IN Raleigh NORTH CAROLINA  
*Hotel Sir Walter*

*Largest and  
Finest*

350 Rooms . . .  
all with tub or  
shower . . . .



*All Outside  
Rooms*

With Bath . . . . .  
Beginning at \$2.50  
daily . . . . .

Carolina's Meeting Place

Only Hotel in Raleigh with *Circulating Ice Water*  
and permanent Radios in every room ~ ~ ~  
Air Conditioned Coffee Shop and Main Dining  
Room with *Dinner and Dance Music* ~ ~ ~

A ROBERT MEYER HOTEL

Roland A. Mumford, Manager

Garage Adjoining

## HOTEL SIR WALTER

*"Visit the Coffee Shop"*

**"GET A LIFT  
WITH A CAMEL"**



Copyright, 1934, R. J. Reppelle Tobacco Company, Winston-Salem, N. C.

**COSTLIER TOBACCOS**

**Camels are a matchless blend of finer,  
MORE EXPENSIVE TOBACCOS - Turkish and Domestic**