

THE WOLFPACK GRIDIRON

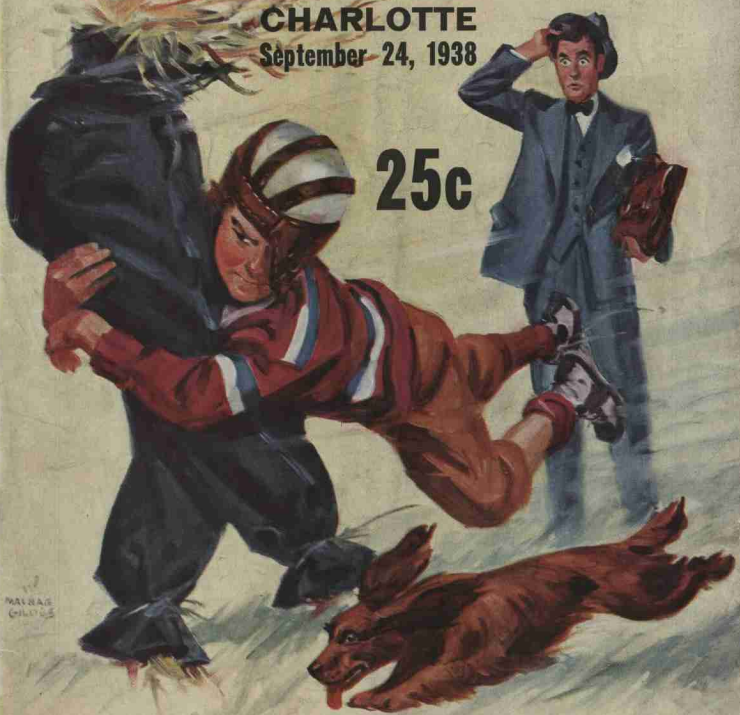
STATE vs. DAVIDSON

American Legion Memorial Stadium

CHARLOTTE

September 24, 1938

25c



PAUL H. H. G. COLLECTOR

SAY PAL!

What about this for a Pleasant Week-End?

DOC NEWTON'S BOYS
Will Furnish You All The Thrills

The

HOTEL CAROLINA

Will Provide You With Every Comfort

250 Rooms Each With Bath

GOOD FOOD

(At Popular Prices)

Radios and Every Modern Convenience



ROBERT I. LEE, Manager

THE WOLFPACK GRIDIRON

Official FOOTBALL Program

WADE ISON, Editor

N. C. State's 1938 Schedule

Date	Opponent	Place
Sept. 24	—Davidson	Charlotte
Oct. 1	—NORTH CAROLINA	RALEIGH
Oct. 8	—Alabama	Tuscaloosa, Ala.
Oct. 15	—WAKE FOREST*	RALEIGH
Oct. 22	—FURMAN	RALEIGH
Oct. 29	—Virginia Tech	Blacksburg, Va.
Nov. 5	—Manhattan	New York
Nov. 12	—U. OF DETROIT	RALEIGH
Nov. 19	—Duke	Durham
Nov. 24	—CARNEGIE TECH	RALEIGH
Dec. 3	—The Citadel	Wilmington

* Night Game

J. F. MILLER, Professor of Physical Education

J. L. VONGLAHN, Business Manager

COACHING STAFF

WILLIAMS S. NEWTON, Head Coach
DR. ROBERT S. WARREN, Backfield Coach
HERMAN HICKMAN, Line Coach

NIG WALLER, Freshman Coach
WILLIE DUSTY, Assistant Coach
ALEX REGDON, Assistant Coach

THE WOLFPACK GRIDIRON is published for all N. C. State Home Football Games by the Sports Publicity Bureau in cooperation with the Athletic Department. Address all communications to Wade Ison, State College, Raleigh, N. C.

JOHNNIE "Calls" THE SIGNALS!

					
Crawling or pushing, 5 yards; holding ball carrier, 15 yards.	Holding. (Penalty—by offense, 15 yards; by defense, 5 yards.)	Delay of game or extra time-outs. (Penalty, 5 yards.)	Player illegally in motion. (Penalty, 5 yards. If from shift or handle, 15 yards.)	Interference with forward pass, or pass touching ineligible player. (Penalty: if interference by offense, 15 yards; otherwise, ball goes to opponents at point of foul.)	Illegal forward pass.
					
Safety.	Penalty refused. Incomplete pass, missed field goal or conversion, both sides off-side, etc.	Unnecessary roughness, illegal defensive use of the hands, clipping, running into or roughing the kicker. (Penalty, 15 yards.)	Score—touchdown, field goal, or conversion.	Offside or violation of kick-off formation. (Penalty, 5 yards.)	Time out.

FOR TRUE SMOKING PLEASURE
Call for **PHILIP MORRIS**

Penalties

- | | | |
|---|---|--|
| 1 Holding by defensive side | 6 Illegal tackling or blocking | 12 Substitute failing to report |
| 2 Crawling | 7 Offside | 13 Backfield in motion |
| 3 Attempt to draw opponents offside | 8 Encroachments on neutral zone | 14 Tacking time out more than three times during half |
| 4 Delaying game | 9 Feint to snap ball | 15 Player out of bounds |
| 5 Taking more than two steps after fair catch | 10 Illegal position | 16 Running into kicker |
| | 11 Interference with opponents before ball is put in play | |
| | LOSS OF FIFTEEN YARDS | |
| 17 Holding by side in possession of ball | 24 Tripping | 31 Individual going on field without permission |
| 18 Hurdling | 25 Leaving field during one-minute intermission | 32 More than one attendant going on field |
| 19 Coaching from sidelines | 26 Unsportsmanlike conduct | 33 Failure to come to one-second stop in shift play |
| 20 Intentional grounding of forward pass. In addition to 15 yard penalty, team also loses down. | 27 Piling up | 34 Roughing the kicker |
| 21 Interference with fair catch | 28 Tackling out of bounds | 35 Clipping |
| 22 Substitute communicating before first play | 29 Pushing, pulling, interlocking interference, etc. | 36 Illegal return to game |
| 23 Tackling or throwing fair catcher | 30 Running into opponents illegally | 37 Team not ready to play at scheduled time |
| | OTHER PENALTIES | |
| 38 Foul within one-yard line: half distance to goal line | 40 Slugging: half distance to goal and disqualification | 42 Any act committed by an outsider but affecting the game: the referee is empowered to impose such penalty as justice may require |
| 39 Interference with forward pass by defense: loss of the ball | 41 Flagrant roughing of kicker: 15 yards and disqualification | |

At It Again :-:

THOUSANDS of N. C. State and Davidson College supporters, drawn from the four corners of the Carolinas and other points, have assembled here tonight to formally celebrate the first Charlotte Football Festival.

We hope they have enjoyed the pre-game festivities and that they will take a liking to the Wolfpack and Wildcats of 1938.

State and Davidson have been rivals in football since 1899. Year-in-and-year-out their games have been spirited, colorful contests that tended to cement the relationships between the two fine North Carolina institutions.

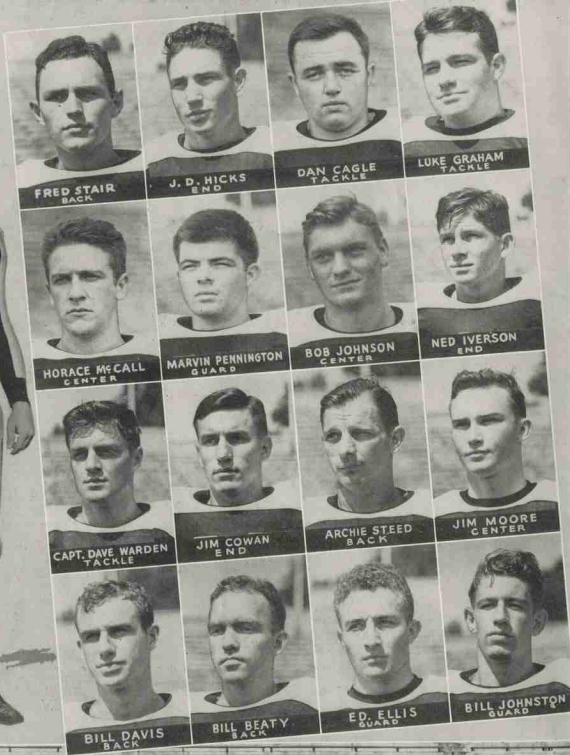
Tonight's game here in the well-lighted and magnificent American Legion Memorial stadium should be no exception to the precedent established back at the close of the 19th century.

Down through the years these teams have looked forward to their annual meeting, but not until a five-year coaching partnership between Williams (Doc) Newton and Gene McEver at Davidson dissolved did the game take on such a throng-attracting appeal.

Last year in Greensboro was the first time these two mentors faced each other in combat. Fifteen thousand persons were attracted by the new rivalry and 15,000 persons were treated to a thrilling gridiron encounter, for again a closely fought battle was waged. The final score was 6-2 and for the sixth time in six years it was written in the football history books that a Davidson-State game had been decided by not more than a one-touchdown margin.

Tonight's will be the second game of the year for Davidson. Last week Coach McEver's team turned in a 12-6 victory over The Citadel. Tonight's will be the 1938 bow of a practically new Wolfpack that has only three starters from 1937—Tackle George Fry, and Backs Ken Sands and the brilliant Little Artie Rooney.

After tonight both teams continue on their hard road that next week leads to Raleigh and a game with the University of North Carolina for the Wolfpack and to Durham and a game with Duke University for the Wildcats.



DAVIDSON 1938 VARSITY SQUAD

To State College • • and the Wolfpack

We pledge our support
We assure you a
boost at every
opportunity

WE are proud that State College
awarded the printing of this
program to us .. We are also proud
to have a State College man in our
organization .. BOB SESSOMS
Class of '31

• • ● • •
THE winner in
every printing
test ♦ No matter
how complicated
we always GIVE
satisfaction ♦ Our
one ambition is to
give SUPERIOR
PRINTING

MITCHELL Printing Company

Printing that Satisfies and Prices to Suit

115-117 West Hargett Street ♦ Phone 18 ♦ RALEIGH, North Carolina

WOLFPACK BOOSTERS

Bernhard's

WHERE
BETTER LIVING BEGINS
HOTPOINT APPLIANCES

508 HILLSBORO ST. RALEIGH, N. C.

FOR N. C. STATE — WIN OR LOSE!

BLAN CHAPMAN, '33

STORR ENGRAVING CO.

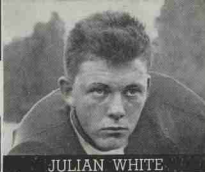
RALEIGH

WOLFPACK

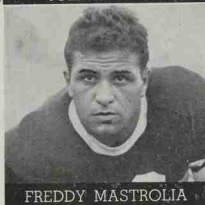
ED COON



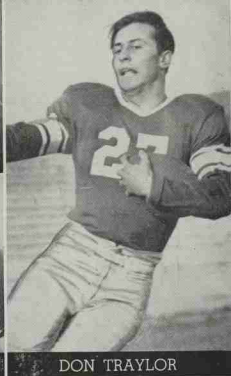
PAT FEHLEY



JULIAN WHITE



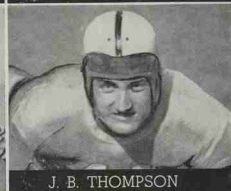
FREDDY MASTROLIA



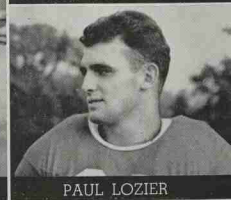
DON TRAYLOR



BOBBY SABOLYK



J. B. THOMPSON



PAUL LOZIER



FRED GARDINER



MICKEY THOMPSON

*Yesterday
Today
Tomorrow*



"It Pays to Play"

AN ENTRY IN THE SPORTS FIELD THAT ALWAYS CLICKS!

Year after year Rawlings marches on designing and building Athletic Equipment that sets the pace in design, quality, stamina; Equipment that is nationally known and approved by players of all sports for its distinctive Rawlings Qualities.

*Whatever your sport there is Rawlings
Equipment to aid your game*

Distributors

BOCOCK - STROUD COMPANY
RALEIGH and WINSTON-SALEM



RAWLINGS MANUFACTURING CO.

ST. LOUIS

--

--

:

MISSOURI



PROF. J. F. MILLER
Professor of Physical Education

RALEIGH'S LARGEST AND FINEST

Drug Store

Eckerd's

222 Fayetteville Street

"Creators of Reasonable Drug Prices"



PATENT MEDICINES -- COSMETICS

DRUGS -- SUNDRIES

FOUNTAIN and LUNCHEONETTE SERVICE

We Invite You to Visit Our New Store :-

Air Conditioned Luncheonette Open Until 8:00 P.M. After Each
State College Football Game

McLELLAN'S

230-32 Fayetteville St.

:-

:-

:-

:-

RALEIGH, N. C.



Sets the Pace for

Young Men's Clothing and Haberdashery

213 Fayetteville St.

:-

RALEIGH

"DEPENDABILITY"

College Court Pharmacy

C. RHODES

:-

Proprietor



FOR THE BIG GAME—THE GAME OF LIFE

Cheap Electricity

SAVES TIME, WORK, AND MONEY

Whether the job to be done is in the home, store, office, or factory an investigation will prove to your satisfaction that it can be done in **LESS TIME**, with **LESS EFFORT**, and at **LESS EXPENSE** with Cheap Electricity.

CAROLINA POWER & LIGHT COMPANY

A North Carolina Institution

CHARLES Stores Company

North Carolina's
Economy Store
For All the Family

PLENTY OF KICKS
BUT NO COMPLAINTS



Plenty of LONG kicks, too! For every record kick ever recorded in football was made with a Spalding Official Ball.

In fact, the whole history of the Spalding J5-V Official Interscholastic Football is liberally sprinkled with record-breaking performance.

A. G. Spalding & Bros.
ATHLETIC GOODS MANUFACTURERS

BIGGER - BETTER



Pepsi-Cola

A delicious,
energy
building
cola drink.
Its name is
founded
on purity.

ORIGINAL

Pepsi-Cola
FAMOUS FOR OVER 30 YEARS

Look for the
Trade Mark

A SPARKLING
BRACING
BEVERAGE

Pepsi-Cola
TRADE MARK
REFRESHING
HEALTHFUL
12 OUNCES

WORTH A DIME

Distributed by the

Pepsi-Cola Bottling Company

2513 Fairview Road
RALEIGH, N. C.

IT'S A WINNER! - - -

WHITE'S
Sir Walter Raleigh
Ice Cream

- - - "There is a Difference"

THE WOLFPACK
Uses
O'SHEA

QUALITY and SERVICE have made O'SHEA'S Football Jerseys and Sweaters the choice of Leading College and University Coaches throughout the country.

BE SMART
USE O'SHEA

O'SHEA KNITTING MILLS

Athletic Knitted Wear for Every Sport
2701 N. Pulaski Road - - - CHICAGO

WE'RE FOR N. C. STATE— WIN OR LOSE!
INSURE WITH US AND YOU **CAN'T** LOSE!



MUTUAL INSURANCE AGENCY

HUGH H. MURRAY, Jr. ('32), Manager



313 Lawyer's Bldg.

RALEIGH

Phone 3091

COMPLIMENTS OF

F. W.
Woolworth
Company

224-226 Fayetteville St.

Raleigh, N. C.

A Double
Sweetheart



Copyright, 1928, by
P. Lorillard Co., Inc.

Old Gold's prize crop tobaccos
are double mellow, double
sealed in double Cellophane
for true freshness.

For Finer, FRESHER Flavor,
Smoke Double-Mellow Old Golds

RALEIGH

THE
Progressive
Capital of a
Progressive
State



RALEIGH CHAMBER
of COMMERCE

DIAMONDS

WATCHES -- SILVERWARE



GIFTS

For All Occasions



BOWMAN'S
JEWELERS

15 West Hargett Street
RALEIGH, N. C.

THE WOLFPACK GRIDIRON

All-American Choice for "time out"



*The pause
that refreshes*

Capital Coca-Cola Bottling Co. Telephone 542
RALEIGH, N. C.

THE WOLFPACK GRIDIRON

North Carolina State College Squad

Player	Pos.	Age	Hgt	Wgt	Yr. on V.	Home Town	Player	Pos.	Age	Hgt	Wgt	Yr. on V.	Home Town
Fred Gardner*	E	19	6-1	200	2	Smithfield, N. C.	John Savini*	G	20	6-1	195	2	N. Hanover, Mass.
John Tatum	E	21	6-1	190	1	McColl, S. C.	Steve Acai*	G	23	6-8	187	3	Donora, Pa.
Charley Smart	E	22	6	175	1	Concord, N. C.	Bill Matheny*	G	25	5-11	203	3	Pulaski, Va.
Mickey Sullivan*	E	22	5-11	195	2	Staten Island, N. Y.	J. D. Jones	G	19	5-10	170	1	Asheville, N. C.
Mickey Thompson	E	20	6-2	190	1	Weeksville, N. C.	Mae Williams	G	18	5-10	175	1	Raleigh, N. C.
Monte Crawford	E	20	5-11	175	1	Spartanburg, S. C.	Bill Meiver	G	19	5-11	175	1	Clearwater, Fla.
Wayland Stuart	E	21	6-1	160	1	Winston-Salem, N. C.	C. A. Santore	G	21	5-10	185	2	Hasbrouck Hgts., N. Y.
Phil Avery	E	19	6	175	1	Morganton, N. C.	Cutie Carter	C	20	5-9	165	1	Raleigh, N. C.
Wade Brown	E	18	6-3	200	1	Rockwell, N. C.	Howell Stroup	C	19	6-1	195	1	Cherryville, N. C.
Ed (Ty) Coon*	T	23	6-1	200	2	Watertown, Conn.	Bill Retter*	C	22	5-10	206	2	Easton, Pa.
Walt Novick	T	19	6	200	2	Prackville, Pa.	Don Traylor	QB	21	5-9	165	2	Murfreesboro, N. C.
Gene Conrad	T	21	6-1	200	1	Charlotte, N. C.	Tony DiYesso*	QB	21	5-8	175	2	White Plains, N. Y.
J. B. Thompson*	T	21	6-2	195	2	Mount Holly, N. C.	Pat Fehky	HB	20	5-10	175	1	Easton, Pa.
George Fry*	T	22	6-1	190	3	Raleigh, N. C.	Andy Pavlovsky†	HB	22	6	185	2	Struthers, Ohio
Ralph Bart	T	19	6	200	1	Raleigh, N. C.	Bobby Sabolyk*	HB	22	5-9	175	2	Yonkers, N. Y.
Julian White	T	19	6	195	1	Raleigh, N. C.	Arie Rooney*	HB	22	5-10	185	2	Pittsburgh, Pa.
Allegheny Hampton	T	18	6-2	210	1	Strafford, N. C.	Dick Watts	HB	18	5-11	165	1	Baldwin, N. Y.
Freddy Mastrolia*	G	23	5-10	180	3	East Boston, Mass.	Paul Lozier*	FB	20	6-1	208	2	Grantwood, N. J.
Bunnie Hines*	G	22	5-10	165	3	Winston-Salem, N. C.	Kenneth Sands*	FB	25	6	180	2	Pulaski, Va.
Ted Johnson	G	20	6	185	1	Paw Creek, N. C.	Bob Cathey	FB	20	5-10	175	1	Charlotte, N. C.
Bill Windley	G	20	5-11	195	1	Pantego, N. C.							
Warren Wooden*	G	22	5-9	180	3	Baltimore, Md.							

* Denotes Lettermen 1937. † Denotes Letterman 1936.



TEAMWORK . . .

every man doing the right thing at

the right time—makes a football team click.

When you drive into our service station, OUR teamwork prompts to click—to give you complete, prompt, courteous, and efficient service.

For better service drive in to

TIRE SALES & SERVICE COMPANY, Inc.

"One Stop Super Service Station"

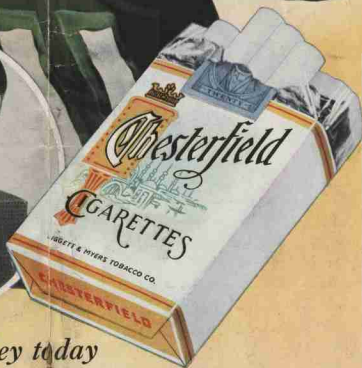
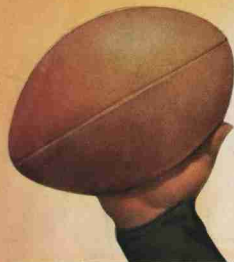
Hillboro and Harrington Sts.

Phone 4700

RALEIGH, N. C.

More Pleasure for MILLIONS

EDDIE DOOLEY
All-American Star
hitting the mark in '26



STATE vs. DAVIDSON

Probable Starting Lineups

WOLFPACK	Pos.	WILDCATS
Gardner	LER	Benfield
Coon	LTR	Johnston
Acai	LGR	Richmond
Retter	C	McLean
Wooden	RGL	Gasteiger
Fry	RTL	Warden (c)
Sullivan	REL	Iverson
Rooney	Q	Davis
Pavlovsky	LHR	Stair
Traylor	RHL	Beaty
Sands	F	McClellan

OFFICIALS

Jerry Gerard (Illinois)	Referee
Blackie Carter (Furman)	Umpire
Maurice Frew (W. & L.)	Head Linesman
Gabe Hill (Wofford)	Field Judge

N. C. STATE COLLEGE

15 Carter, c	26 Savini, g	37 Conrad, t
16 Smart, e	27 Traylor, hb	38 Lester, hb
17 D'Yess, qb	28 Strop, c	39 Pavlovsky, hb
18 Watts, hb	29 Acai, g	40 Gardner, e
19 Rooney, qb	30 Cady, hb	41 Thompson, t
20 Hines, g	31 Sabaly, g	42 Coon, t
21 Mathoney, g	32 Winsler, g	43 Burt, t
22 Retter, c	33 Sullivan, g	44 Norick, t
23 Crawford, e	34 Warden, g	45 Fry, t
24 Fehly, hb	35 Brown, e	46 White, t
25 Sand, fb	36 Mastrolia, g	47 Tutum, e

DAVIDSON COLLEGE

14 Harrison, b	27 Gasteiger, g	36 Cowan, e
15 Bost, b	28 Watkins, b	37 Warden, t
16 Sharpe, b	29 Benfield, e	38 Pennington, g
17 Richmond, g	30 Johnson, g	39 McCall, e
21 Stool, b	31 Beaty, b	40 Johnston, g
22 McClintock, e	32 Hicks, e	41 Iverson, e
23 Hand, b	33 Moore, e	42 Cagle, t
24 McLain, e	34 Ellis, b	43 Graham, t
26 McClellan, b	35 Davis, b	

... and Eddie Dooley today

... with his accurate Chesterfield football forecasts every Thursday, highlights and complete scores every Saturday.

Join the millions who know this—a pack of Chesterfields means *more pleasure* than you can find anywhere else in a cigarette—Chesterfields Satisfy.

1ST QUAR. 2ND QUAR. 3RD QUAR. 4TH QUAR. TOTAL

WOLFPACK				
WILDCATS				

THE WOLFPACK GRIDIRON

Davidson College Squad

Player	Pos.	Hght	Wght	Yr.on V.	Home Town
J. D. Hicks	E	5-11	175	3	Shelby, N. C.
Ned Iverson*	E	6-4	186	3	Miami, Fla.
Jim Cowan	E	6-4	176	3	Apex, N. C.
Bob Benfield	E	6-2	165	3	Sinks Grove, W. Va.
Gales McClintock	E	5-11	155	2	Charlotte, N. C.
Buck Powell	E	5-10	157	2	Whiteville, N. C.
Frank Niven	E	6-1	164	2	Albemarle, N. C.
John King	E	5-11	162	2	Johnson City, Tenn.
Dave Warden*(c)	T	6	195	3	Johnson City, Tenn.
Luke Graham*	T	5-10	199	3	Cleveland, N. C.
Dan Cagle	T	6-1	214	2	Roanoke Rapids, N. C.
Jim Crutchfield	T	5-10	164	2	Asheboro, N. C.
Joe Gammon	T	5-11	151	2	Lavras, Brazil
Bob Balesky	T	5-9	164	1	Reidsville, N. C.
Henry Bahson	T	6	167	1	Winston-Salem, N. C.
Bill Johnston*	G	6-1	260	3	Leesburg, Fla.
George Richmond*	G	5-10	158	2	Concord, N. C.
Harry Gasteiger	G	5-11	174	3	Johnson City, Tenn.
Ed Ellis	G	5-8	167	3	Wooster, Ohio
Marvin Pennington	G	5-7	179	2	Jasper, Ala.
Leith Gargou	G	5-9	145	1	Valdese, N. C.
Horace McCall	C	5-11	176	3	Troy, N. C.
Sam McClean	C	5-10	158	2	Morganton, N. C.
Jim Moore	C	5-10	173	3	Cleveland, N. C.
Bob Johnson	C	5-11	189	1	Knoxville, Tenn.
Bob McClellan*	B	5-10	171	3	Johnson City, Tenn.
Bill Davis*	B	5-11	165	3	Badin, N. C.
Fred Stair*	B	5-9	151	3	Knoxville, Tenn.
Bill Beaty	B	5-10	160	3	Rock Hill, S. C.
Wilson Hand	B	5-6	157	3	Lowell, N. C.
Frank Harrison	B	5-6	146	3	Salisbury, N. C.
Rufus Plonk	B	5-8	138	3	Bessemer City, N. C.
Archie Steed	B	5-9	153	2	Jackson, Tenn.
Dick Winters	B	5-10	158	2	W. Palm Beach, Fla.
Bitts Watkins	B	5-7	152	2	Henderson, N. C.
Granville Sharpe	B	5-9	156	1	Burlington, N. C.
Billy Pharr	B	5-8	155	1	Clarksdale, Miss.
Gene Vereen	B	5-11	171	1	Moultrie, Ga.
Joe McClesky	B	5-9	148	1	Charlotte, N. C.
Joseph Parrish	B	5-6	146	1	Winston-Salem, N. C.
Karl Jonas	B	6	172	1	Marion, N. C.
Bill Bolin	B	5-9	169	3	Mascot, Tenn.

* Denotes Lettermen.

Hunter Floral Co.
Phone 7119

226 South Tryon Street

CHARLOTTE, N. C.

The Best of Curb Service

Free Delivery -:- Phone 3-5457

Wesley Heights Pharmacy

"The Store of Personal Service"

Cor. W. Morehead and Grandin Road

CHARLOTTE, N. C.

AUBURN STOKERS

Manufactured by

Auburn Foundry, Inc., Auburn, Indiana

Since 1908

Domestic Commercial Industrial

Sizes from 4 to 1000 Boiler Horse Power

New low prices on domestic models. We invite your inquiry before you buy your stoker this fall.

Quality Merchandise and Service
for Sale

Wm. T. Alexander & Co.

Box 64 Phone 3-3071 Charlotte, N. C.

WE CHERISH STATE COLLEGE

As One of North Carolina's Most Outstanding Institutions of Learning

* * *

Heilig & Meyers

Is Raleigh's Outstanding Institution for Furniture of Quality in Both Period Reproductions and Modern Designs

HEILIG & MEYERS Furniture Company
135-137 S. Wilmington St. Raleigh

SEIBERLING

Vapor Cured Tires

And Auto - Household and Miscellaneous Accessories

* * *

BLACKWOOD'S, INC.
Carolina's Largest Independent Tire Jobber

RALEIGH
404 Hillsboro St.
Phone 4368

DURHAM
434 W. Main St.
Phone L-7281

ROCKY MOUNT
130 Sunset Ave.
Phone 1200

FAYETTEVILLE
118 Donaldson St.
Phone 2460

For Those Who
Appreciate

FINER Leather Jackets

CALL ON

Lewis Sporting Goods Co.



To Gain Ground!

A yard or two of ground may decide today's football game.

The value of ground is even more decisive in the every-day life of the community.

Consult us regarding your Insurance Problems. Your questions will be answered and suggestions made without obligation to you.

ROBERT G. YANCEY
Agent
407-9 Lawyers Building
RALEIGH, N. C.

W. H. King Drug Co.

WHOLESALE DRUGGISTS

Raleigh, N. C.



Manufacturers of Page's CRU-MO

GET INTO A HUDDLE :-:

When the boys on the field get together in a huddle, you know they're planning something extra special.

Take a tip from the boys.

For something extra special in the way of mid-afternoon or evening refreshment, get into a huddle with the gang at

FRANKLIN'S CAROLINA PHARMACY

Carolina Hotel

--

RALEIGH

--

Phone 142

Prescription Service a Specialty

HEADACHE

Get QUICK Relief

WITH

CAPUDINE

A Liquid — It Acts Fast

L
U
N
C
H



D
I
N
N
E
R

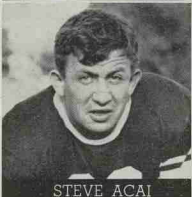
YOU BE THE JUDGE



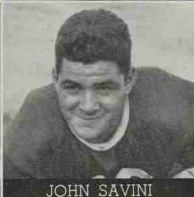
BILL WINDLEY



HOWELL STROUP



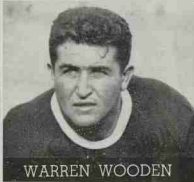
STEVE ACAI



JOHN SAVINI



TONY DIIESO



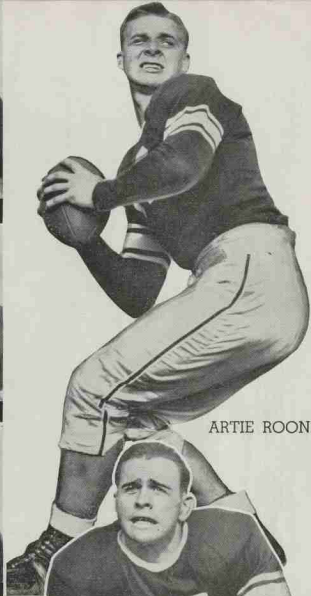
WARREN WOODEN



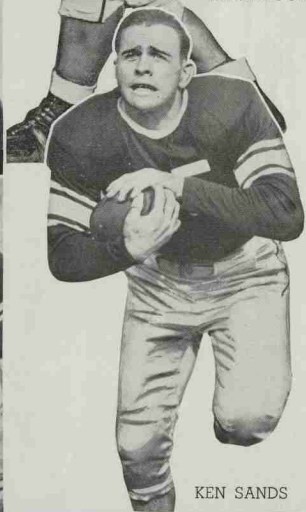
TED JOHNSON



BILL MATHENEY



ARTIE ROONEY



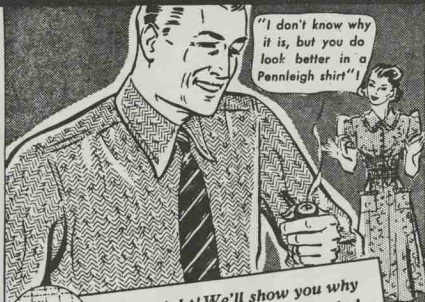
KEN SANDS

WOLFPACK

THE WOLFPACK GRIDIRON

GRANTS

KNOWN FOR VALUES



*She's right! We'll show you why
in Grants new Fall Pennleighs!*

Men's Shirts

1.00

First of all, they're correctly sized and fuller cut! The fine quality broadcloth's pre-shrunk and the colors never fade! The neat non-wilt collar always looks crisp! New darker stripes and fancies for Fall. White and plain colors. Compare these shirts with those found at \$1.69 to \$1.95. Sizes 14½ to 17.

W. T. GRANT Co.

212 Fayetteville St., Raleigh, N. C.

THE WOLFPACK GRIDIRON



Every Service For Your Car

Motors Reconditioned - Brake
Relining - Duco Painting - Safety
Glass Installed - BEAR SYSTEM
Wheel and Chassis Aligning
Wrecked Cars Completely Rebuilt
Open 24 Hours Every Day
Wrecker Service

JOHN W. EVANS' SON

Morgan & Blount Sts., Raleigh, N. C.

A BOOST TO STATE COLLEGE'S WOLFPACK



DR. R. R. SERMON
N. C. State Trainer
and Basketball Coach



CHICK DOAK
N. C. State Baseball
Coach

*Raleigh Beauty
Shoppe*

WE SPECIALIZE IN ALL LINES OF
BEAUTY CULTURE

PHONE 2006 109 1/2 FAYETTEVILLE ST.
RALEIGH, N. C.

HEADQUARTERS FOR—
DIAMONDS - WATCHES -
SILVERWARE - JEWELRY

—of the Better Kind

Neiman's
INC

JEWELERS-SILVERSMITHS
RALEIGH, NC

Before and After the
GAMES
Visit

BOON-ISELEY DRUG CO.
118 Fayetteville Street

TOASTED SANDWICHES and
FOUNTAIN SERVICE

On Your Way...

Both to and from the Games you pass the

STUDENTS SUPPLY STORE

It is one of STATE COLLEGE'S "Institutions" and has kept apace with the times in all the modern fixtures and services.

Make it a point to stop in for refreshments while you're
"On the Campus"

Every Day in Every Way State College Gets Better and Better

STUDENTS SUPPLY STORE

Y. M. C. A. BUILDING — N. E. CORNER OF STADIUM

Green Grill

"The Best Training Table
in Town."

GREEN GRILL

RALEIGH, N. C.

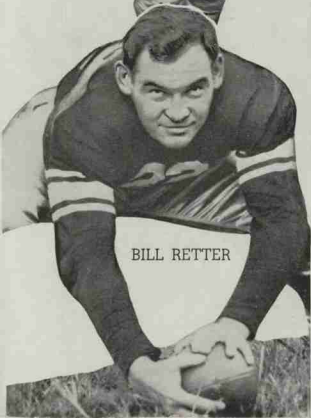
AT THE GAME
AND EVERYWHERE



The ALL-AMERICAN
THIRST QUENCHER

WOLFPACK

MICKEY SULLIVAN



BILL RETTER



ANDY PAULOVSKY



CUTIE CARTER



BOB CATHEY



GEORGE FRY



BUNNIE HINES



CHARLIE SMART



RALPH BURT



WALT NOVICK



AFTER THE GAME—
MEET YOUR
FRIENDS AT

WALGREEN'S

Here's the Convenient, Congenial
Place to Gather — Where You
Find Good Food, Good Drinks,
Good Service. Get the habit of
using Walgreen's as Your Head-
quarters.

You're Always Welcome!

Fayetteville
and Hargett Sts.

"In the Heart of
Raleigh"



FOR STYLE AND QUALITY . . .

SHOP AT

*Fine's
Men's Shop*

HATTERS - FURNISHERS



Corner Fayetteville and Hargett Streets
RALEIGH, N. C.

REFRESHMENT AT IT'S BEST

ON SALE
THROUGHOUT
THE NATION



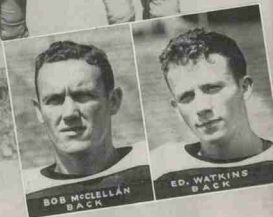
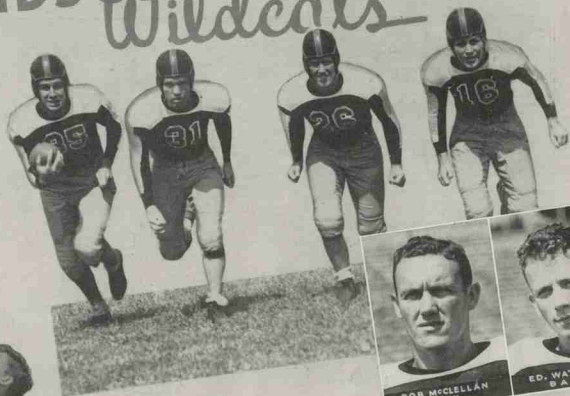
WHEN
THIRSTY

BE
THRIFTY

Bottled By

RALEIGH NEHI BOTTLING CO.
ALSO BOTTLERS OF
PAR-T-PAK AND NEHI BEVERAGES

DAVIDSON *Wildcats*



BOB MCCLELLAN
BACK



ED. WATKINS
BACK



FRANK HARRISON
BACK



GRANVILLE SHARPE
BACK



GEORGE RICHMOND
GUARD



GALES MCCLINTOCK
END



BOB BENFIELD
END



HARRY GASTEIGER
GUARD



SAM MCLEAN
CENTER



WILSON HAND
BACK

Enlarged, Made Over, Made New for You!

IT'S fair enough to say that "The Tavern" of Hotel Charlotte is a preferred restaurant of all the Carolinas; now, more than ever, it is.

For its recent enlargement has given it the one thing it most needed: extra capacity. You'll no longer have to wait for tables when rushes of business come.

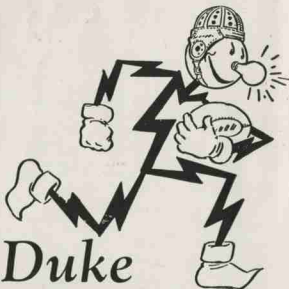
And you'll like the look of the place, too. We've been careful to preserve the cheery, informal look of the place, its homey and comfortable appearance, which has always made folks feel so quickly at home and content there.

The same good and varied menus are here, the same attractive, appetite-provoking foods—and the same satisfactory prices. Luncheon continues to be 50c, dinner 75c—even if the menu-listings do make them look as if they'd have to be more.

Come in and see! You'll be pleased, we promise you; and maybe you'll be surprised to find such values at such low prices.

THE TAVERN OF HOTEL CHARLOTTE

YOU CALL THE SIGNALS



Duke

POWER COMPANY

..... and I'll
Carry the Load
Cheerfully,"

SAYS

REDDY KILOWATT
YOUR ELECTRIC SERVANT



REDDY'S SERVICES COST
ONLY A FEW PENNIES A DAY
USE THEM!

430 S. Church St.
Phone 4112

After the Game
**RALEIGH'S FINEST
THEATERS**

WHERE ENTERTAINMENT COSTS
SO LITTLE

AMBASSADOR

RALEIGH'S ULTRA-MODERN THEATRE

SUNDAY — MONDAY — TUESDAY
KATE DOUGLAS WIGGIN'S

**"MOTHER CAREY'S
CHICKENS"**

WITH

ANNE SHIRLEY — RUBY KEELER
FAY BAINTER — JAMES ELLISON

WED. - THUR. - FRI. - SAT.

FRED GINGER
ASTAIRE ROGERS

IN

"CAREFREE"

Also Latest Issue "MARCH OF TIME"

CAPITOL

Mat. 15c.
Night 20c.
Children 10c.

SUNDAY ONLY

"FEMALE FUGITIVE"

With EVELYN VENABLE — CRAIG REYNOLDS

MONDAY — TUESDAY

"CRIME SCHOOL"

With The "Dead End" Boys — Humphrey Bogart

WEDNESDAY ONLY

A Movie Quiz Contest Picture

Johnny Davis — Lola Lane in **"MR. CHUMP"**

"Save Your Capital at the Capitol"

STATE

MAT. 25c. NIGHT
POPULAR PRICES

SUN. - MON. - TUES.

LYNNE OVERMAN
IN
SONS OF THE LEGION

WITH
BILLY LEE

WED. - THURS.
CHESTER MORRIS
BRUCE CABOT

IN

Smashing the Rackets

WITH

RITA JOHNSON

FRI. - SAT. - SUN.

LAUREL and HARDY
IN
BLOCKHEADS

PALACE

WE BRING THE BIG ONES
BACK-

10c and 20c Matinee and Night

SUN. - MON. - TUES.

A Love Story That Packs Thrills

ROBERT TAYLOR

MARGARET GRAHAM

ROBERT FRANCHOT

YOUNG TONE

IN

"Three Comrades"

WEDNESDAY - THURSDAY

Revealing Closed Chapters of

Girls On the Open Road-

"YOUNG FUGITIVES"

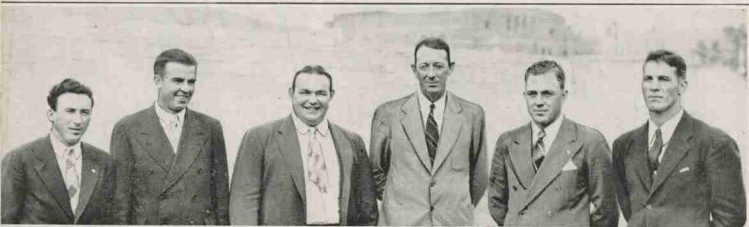
STARTS FRIDAY

GENE AUTRY

IN

"Man From Music Mountain"

STATE COLLEGE COACHES



Reading Left to Right: WILLIE DUSTY, General Assistant; NIG WALLER, Freshman Coach; HERMAN HICKMAN, Varsity Line Coach; WILLIAMS (DOC) NEWTON, Head Coach; DR. BOB WARREN, Backfield Coach; ALEX REGDON, Freshman Line Coach.

DAVIDSON COACHES



Left to Right: GENE McEVER, Head Coach; LAWRENCE, General Assistant and CHET CHAPMAN, Line Coach

N. C. STATE

WIN *or* LOSE

BONITZ
INSULATION CO.



302 Piedmont Bldg.

CHARLOTTE, N. C.

Greetings!

The Greatest Hotel Value
IN Raleigh NORTH CAROLINA
Hotel Sir Walter

Largest and
Finest

350 Rooms . . .
all with tub or
shower



All Outside
Rooms

With Bath
Beginning at \$2.50
daily

Carolina's Meeting Place

Only Hotel in Raleigh with *Circulating Ice Water*
and permanent Radios in every room ~ ~ ~
Air Conditioned Coffee Shop and Main Dining
Room with Dinner and Dance Music ~ ~ ~

A ROBERT MEYER HOTEL

Roland A. Mumford, Manager

Garage Adjoining

HOTEL SIR WALTER

"Visit the Coffee Shop"

**"GET A LIFT
WITH A CAMEL"**



Copyright, 1939, R. J. Reynolds Tobacco Company, Winston-Salem, N. C.

COSTLIER TOBACCOS

Camels are a matchless blend of finer,
MORE EXPENSIVE TOBACCOS — Turkish and Domestic