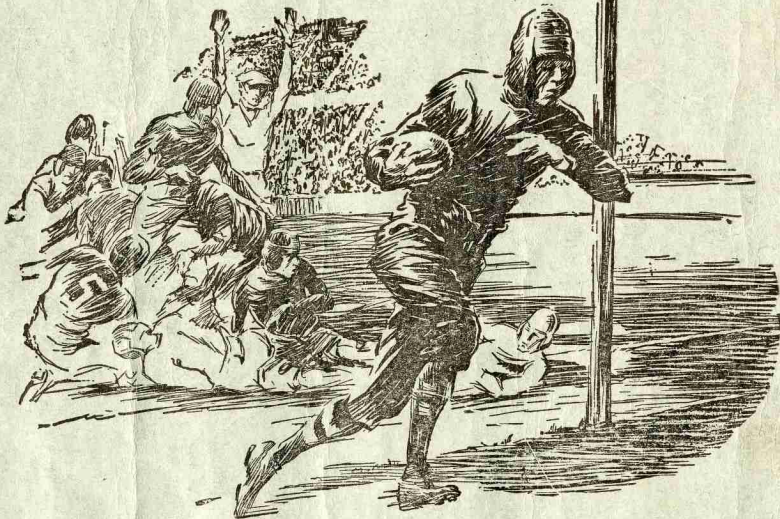


# N. C. State *vs.* Elon

---

**OFFICIAL  
PROGRAMME**



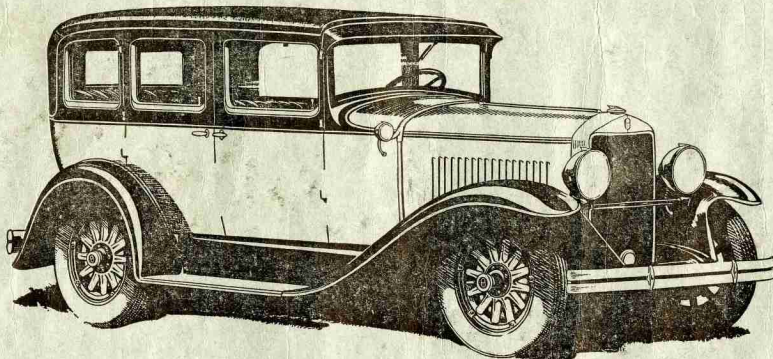
---

**FRIDAY, SEPTEMBER 28th, 1928**

---

**Game Called 3:00 p.m.**

**Riddick Athletic Field**



**GRAHAM-PAIGE CARS GIVE YOU MORE FOR YOUR MONEY**  
Built by **Graham Brothers**

Sold by

**RAWLS MOTOR COMPANY**

BEST PLACE IN RALEIGH TO BUY USED CARS

Raleigh

::

Greensboro

# CROWDER'S CIGAR STORE

---

*Soda : Cigars : Lunch : Magazines*

---

“Meet Me at Crowder’s”

Corner Hargett and Wilmington Streets

RALEIGH, N. C.

# Probable Line-Up

N. C. State	Position	Elon College
GOODWIN.....	Left End.....	ROLLINS
LEPO.....	Left Tackle.....	SMITH
VAUGHAN.....	Left Guard.....	MERRITT
METTS.....	Center.....	HARDY
FLOYD.....	Right Tackle.....	HUGHES
MAYFIELD.....	Right Guard.....	WATSON
JORDAN.....	Right End.....	ZEIGLER
ADAMS.....	Quarterback.....	WALKER
WARREN.....	Left Halfback.....	LATHAM
CRUM.....	Right Halfback.....	BOYD
OUTEN.....	Fullback.....	WILLIAMS

## McDONALD & TEMPLE

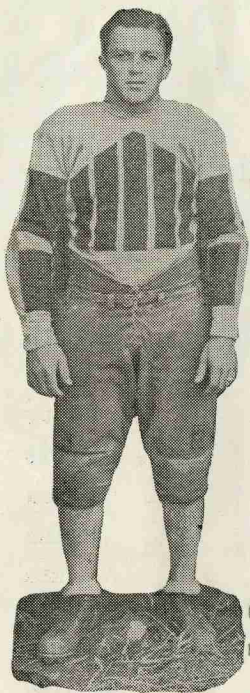
14 West Hargett Street  
(Opposite Odd Fellows Building)

Headquarters for All Sporting Events

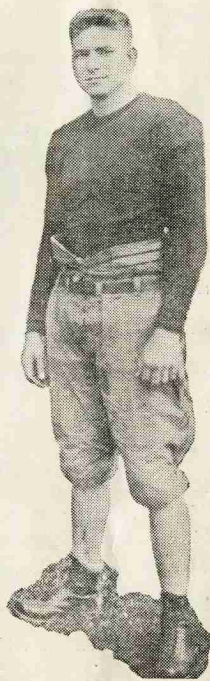
Blue Plate Lunches, 50c

Football Scores by Western Union Ticker Service

PHONES 2496-9170



BOB WARREN, Captain  
Left Halfback  
N. C. State



R. R. HARDY, Captain  
Center  
Elon

**THE  
PROVIDENT MUTUAL  
LIFE INSURANCE CO.**  
of PHILADELPHIA

Organized in 1865

**THE COMPANY OF LOW NET COST  
and GREAT FINANCIAL STABILITY**

Flitcraft's Life Insurance Courant of November, 1927, says:

"An examination of the new net cost schedule, as far as comparisons can be made from the figures now available, seems to indicate that, at the younger and middle ages at least, the Provident is now taking the lead in the item of low net cost of insurance to its policyholders generally."

**FRANK M. HARPER, District Agent**  
Tucker Building, Room 312  
RALEIGH, N. C.

**S & W  
CAFETERIAS**

for your convenience

Raleigh  
Charlotte  
Asheville  
Knoxville  
Atlanta



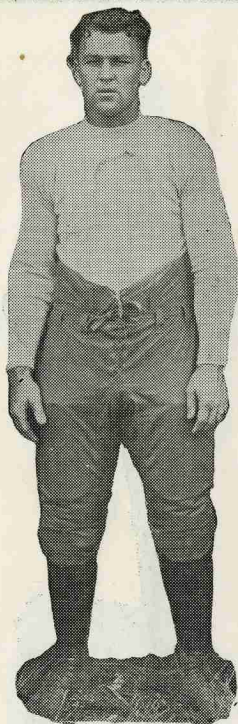
ADAMS, Quarterback  
N. C. State



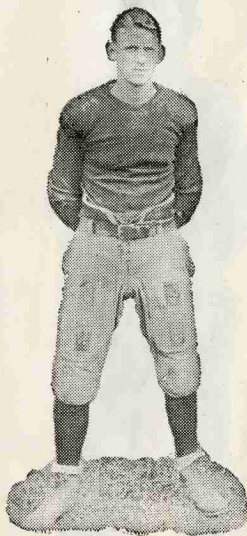
WALKER, Quarterback  
Elon

### The Score

	FIRST QUARTER	SECOND QUARTER	THIRD QUARTER	FOURTH QUARTER	FINAL
ELON.....					
N. C. STATE.....					



VAUGHAN, Left Guard  
N. C. State



ZEIGLER, Right End  
Elon

#### STATE COLLEGE SONGS

##### "State College, Keep Fighting Along!"

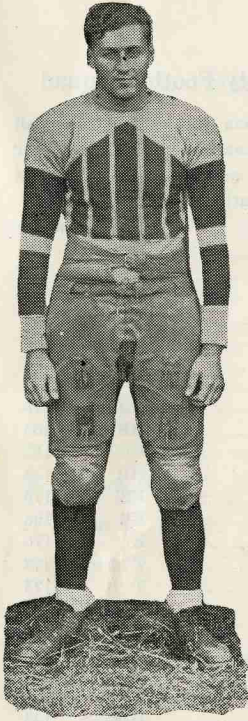
(Music—"U. S. Artillery"—Words by H. M. Ray)

Play the game, fight like men!  
We're behind you, lose or win—  
State College, keep fighting along!  
Scrap 'em, men; hold 'em fast;  
You'll reach victory at last—  
State College, keep fighting along!  
Rise, men, to the fray, and let your banners wave,  
Shout out our chorus loud and strong;  
And where'er we go we'll let the wide world know,  
Old State College keeps fighting along!

After the Game Eat at the

## N. C. State College Cafeteria

Good Food — Reasonable Prices



FLOYD, Right Tackle  
N. C. State



CRUM, Right Halfback  
N. C. State

STATE COLLEGE YELLS

Wau Gau Rac, Gau Rac, Gau Rac!  
Wau Gau Rac, Gau Rac, Gau Rac!  
Carolina Polytech!  
Boom Rah! Boom Ree!  
State College, N. C.!

We buck that line, we do!  
We buck that line, we do!  
When the line is weak  
We buck very well;  
When the line is strong  
We buck like—HELL!  
We buck that line, we do!

**Howell's**

LUNCHEONETTE and SANDWICH SHOP

14 West Martin Street

Sodas

::

Periodicals

::

Smokers' Supplies

## Who's Who on N. C. State Varsity Football Squad

Following is a table on the North Carolina State Varsity Football Squad of 1928, coached by "Gus" Tebell (Wisconsin), "Butch" Slaughter (Michigan), and Dr. Ray Sermon (Springfield), and managed by Graduate Manager Tal Stafford and Student Manager Charles Hibbard:

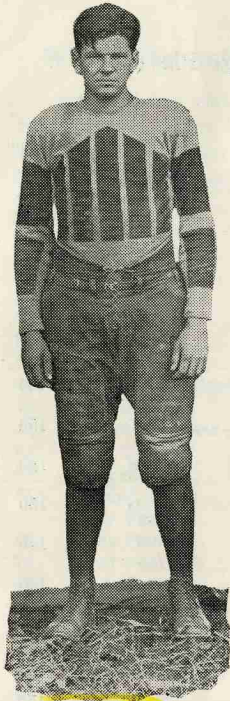
No.	Player	Position	Weight
80	Lindsay Jordan.....	E	170
89	Frank Goodwin.....	E	180
77	John Lepo.....	T	172
70	Dave Floyd.....	T	184
71	Fred Vaughan.....	G	196
84	John Ford.....	G	168
82	Bill Metts.....	C	192
85	Bob Warren (Captain).....	LHB	179
76	Basil Melton.....	HB	165
73	"Sparky" Adams.....	QB	162
68	Fred Crum.....	HB	142
88	A. S. Morris.....	FB	170
75	"Chink" Outen.....	FB	198
.....	Tony Furtado.....	E	170
56	Mack Stout.....	T	173
78	Boyd Smathers.....	T	175
87	Paul Choplin.....	C	170
66	Jimmy Mayfield.....	.....	186
83	A. L. Vann.....	.....	180
40	Morris Johnson.....	QB	155
72	Norris Jeffrey.....	FB	155
60	J. C. Gardner.....	HB	143
50	G. J. Albright.....	HB	165
46	Fred Plonk.....	E	175
32	K. Aderholt.....	HB	168
2	R. B. Gardner.....	C	170
3	G. R. Hanks.....	T	245
5	G. L. Fitzgerald.....	E	155
49	J. R. Hampton.....	T	165
63	Fred Crowson.....	E	175
57	D. E. Patterson.....	T	175
53	G. E. Silver.....	E	165
35	T. C. Kerr.....	QB	145
43	H. E. Atkinson.....	HB	145
45	Z. Plonk.....	FB	175
.....	L. G. McDowell.....	E	150
.....	H. W. Morgan.....	HB	175
.....	L. B. Clarke.....	HB	170



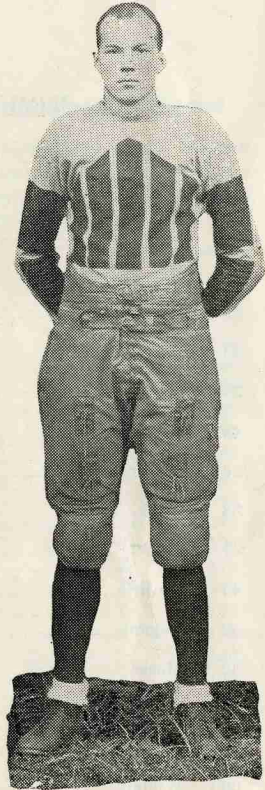
## Information on Elon College Players

1928 Season

No.	Player	Position	Weight
40	Collier.....	G	180
44	Hardy (Captain).....	C	173
39	Hughes.....	T	175
43	Watson.....	G	170
37	Merritt.....	G	155
46	Smith.....	T	160
36	Stevenson.....	T	150
38	Clark.....	E	160
41	Snow.....	G	150
45	Guthrie.....	C	140
47	Regan.....	G	145
42	Moser.....	T	165
32	Rollins.....	E	160
31	Zeigler.....	E	152
30	Williams.....	FB	165
33	Boyd.....	HB	155
27	Latham.....	HB	170
28	Newman.....	HB	140
26	Walker.....	QB	140
29	Dofflemeyer.....	HB	142
34	Harrington.....	E	150
35	Jones.....	E	150
25	Roberts.....	HB	130



METTS, Center  
N. C. State



GOODWIN, Left End  
N. C. State

**Hi! Wolf! Hi! Pack!**  
**Hi! Hi! Hi!**  
**Wolf-pack!**  
**Wolf-pack!**  
**Wolf-pack!**

For Your Meals Visit

**THE CENTRAL QUICK LUNCH**

8 East Davie Street, Raleigh, N. C.

Best Food

:

Best Service

:

Reasonable Prices



CEASE!

ALL WESTERN BASKET BALL GUARD '22-'23

FORE! OR FIVE!

MEDAL

WESTERN CONFERENCE MEDAL FOR ATHLETICS AND SCHOLARSHIP

HE'S A RIGHT GOOD GOLFER AND NOT HALF BA WITH THE SHOT GUN

PLAYS BASEBALL TOO AND COACHES FRESHMEN

TEACHES THEORY AT STATE

ONE OF GREATEST ENDS WHO EVER ROAMED THE WESTERN CONFERENCE

ALL WESTERN CONFERENCE END IN '21-'22

REYNOLDS

OPTIMISTIC OVER COMING SEASON

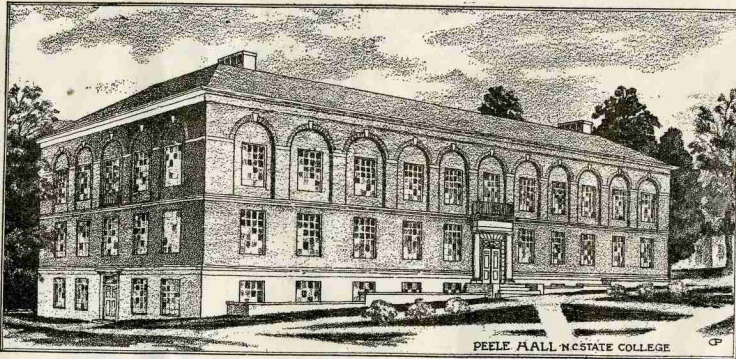
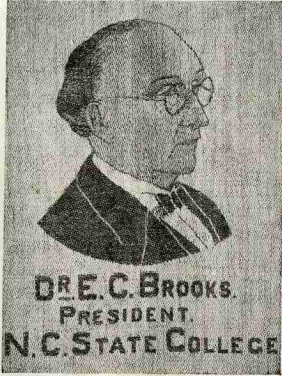
GUS<sup>TD</sup> TEBELL

BORN IN ILLINOIS IN '98 - FOUR LETTER A.S. MAN - GRADUATED U. OF WISC. '23 - CAME TO STATE IN 1924

DRINK

Coca-Cola

Delicious and Refreshing



### Officials of the Day

Referee..... BRICE..... Auburn  
Umpire..... HENDERSON..... Ohio Wesleyan  
Headlinesman..... RAWSON..... Georgia University

### N. C. State Coaches

DR. A. J. WILSON..... Chairman, Faculty Athletic Committee  
TAL H. STAFFORD..... Graduate Manager Athletics  
J. F. MILLER..... Director of Physical Education  
G. K. TEBELL..... Head Coach, Football and Basketball  
C. G. DOAK..... Head Coach, Baseball  
R. R. SERMON..... Head Coach, Track, and Trainer  
E. R. SLAUGHTER..... Assistant Football Coach  
J. T. DRENNAN..... Wrestling and Freshman Football  
E. P. PASSAILAIGUE..... Assistant Freshman Coach

### Elon Coach

P. H. WALKER

# Capital Printing Co.

THE HOUSE OF QUALITY PRINTING

## School and College *Printers*



QUALITY—We Have It

SERVICE—We Give It

SATISFACTION—We Guarantee It

**PHONE**

**1351**

**Corner Hargett and Wilmington Streets**

**RALEIGH, N. C.**

---

THIS PROGRAM PRINTED BY THE CAPITAL PRINTING CO.

H A V E A C A M E L



Here come the winners  
—they smoke for pleasure

What's the score? Have a Camel. You win the real enjoyment of smoking. Fragrant, mild, altogether delightful—

**CAMELS**

*"I'd walk a mile for a Camel"*