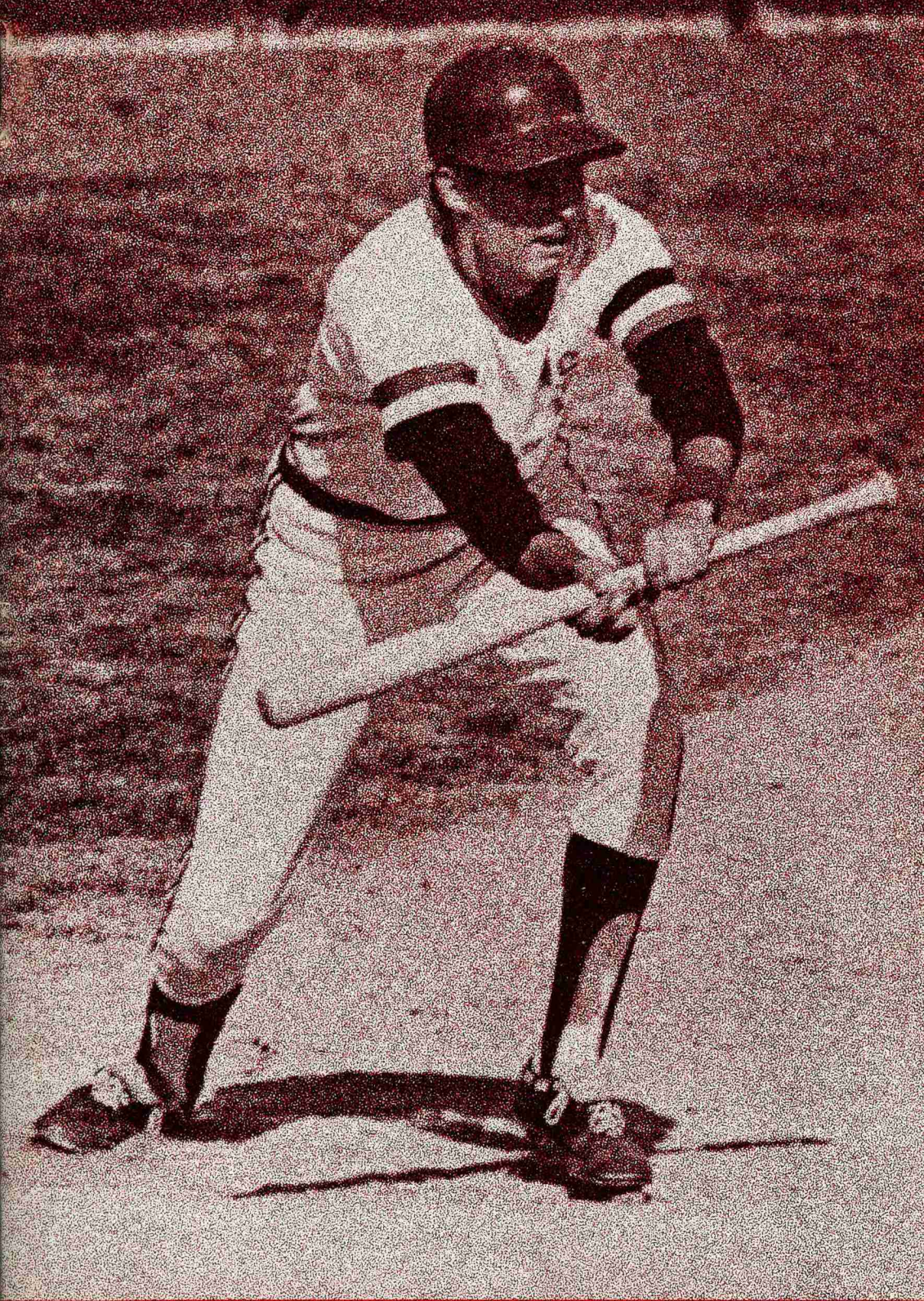


North Carolina State University



WOLFPACK

Baseball 1978

SAM ESPOSITO

Head Baseball Coach

Sam Esposito has become one of the most respected men in collegiate baseball.

In 11 seasons at the helm, the former major league has guided the Wolfpack to four Atlantic Coast Conference championships, a third-place finish in the national tournament at Omaha and has not experienced a single losing campaign. Under his direction, the Pack has had seven seasons when it won 20 or more games.



Against ACC competition, Esposito's teams have etched a 109-66-1 record, and for all games, the mark stands at 230-118-3 for a winning percentage of .661.

The apex of his 11-year N.C. State career came in 1968 when he steered the Wolfpack to the league championship, the NCAA District III title and a third-place finish in the collegiate World Series as the team ended with a 25-9 overall record. At one stretch (1973-74-75), the Pack captured three consecutive conference crowns, and, in 1975, notched its best ever record, 27-7.

A native of Chicago, Esposito cut short an outstanding collegiate career at Indiana University to join the Chicago White Sox after his sophomore season. He remained in the majors for ten seasons as an infielder and helped the Chisox reach the 1959 World Series. He later returned to Indiana to earn both an undergraduate and a graduate degree.

After six years of prep coaching in East Chicago, he joined the Wolfpack as head baseball and assistant basketball coach, a double post that he still fills.

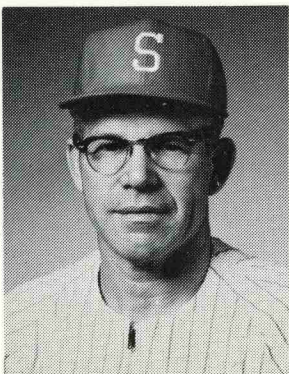
The 46-year-old Esposito, married to the former Noreer Anderson of Chicago, has been singled out for numerous honors, including NCAA District III Coach-of-the-Year in 1968, and co-winner of the coveted Will Wynne Award, also in 1968. In October of 1972, he was inducted into the South Chicago Sports Hall of Fame, and two months later, he was tapped for similar recognition by the Illinois Basketball Hall of Fame.

The Espositos are the parents of a baby daughter, Antoinette.

JIM EDWARDS

Assistant Baseball Coach

J. B. (Jim) Edwards, who reached Triple-A ranks as a minor league shortstop, is in his 23rd season as an assistant coach at N. C. State University.

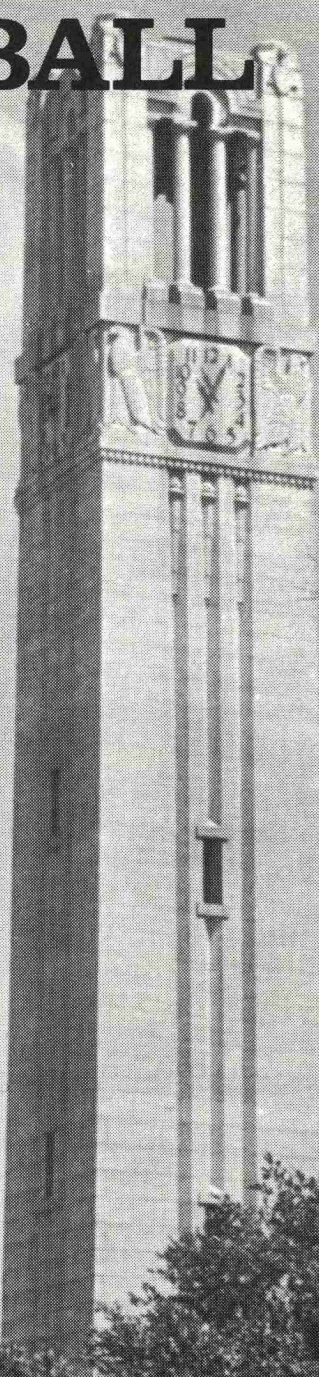


An N. C. State graduate, Jim earned an industrial arts degree in 1948. In 1951, he decided to leave his baseball career and join the staff at N. C. State. He is now an associate professor of physical education. World War II interrupted a college career that saw him voted all-State in baseball and win the 175-pound Southern Conference wrestling title.

A Lincolnton native who grew up at Wilmington, Jim spent four seasons as a Carolina League shortstop. He played with Buffalo (AAA) in 1950 while a member of the Philadelphia Athletics organization.

Jim holds a Master's degree in physical education, and is married to the former Odessa Williams of Robbins. They have a daughter, Gail.

N.C. STATE BASEBALL 1978



QUICK FACTS ABOUT STATE

CHANCELLOR	Dr. Joab L. Thomas
FOUNDED	1887
ENROLLMENT	17,800
CONFERENCE	Atlantic Coast
COLORS	Red and White
NICKNAME	Wolfpack
FIELD	Doak Field (4,000)
ATHLETICS OFFICE	Case Athletics Center
ATHLETICS DIRECTOR	Willis R. Casey
ASSOC. ATHLETICS DIRECTOR	Frank Weedon
SPORTS INFORMATION DIRECTOR	Ed Seaman
ASSISTANT SPORTS INFORMATION	Walt Atkins
TELEPHONES	Baseball 919-737-2104
	Sports Information 919-737-2102

Requests for N. C. State athletics information and working press tickets should be made to Ed Seaman, Sports Information Director. Telephones: office, 919-737-2102; home 919-829-9186.

THE 1978 OUTLOOK

With voids left by graduation to be filled, the Wolfpack will use many new and different faces defensively this season while relying heavily on a strong pitching corps returning intact.

"We lost about seven guys who played a lot of ball for us last year, and we're really gonna miss them," says coach Sam Esposito, beginning his 12th season at N.C. State. "But almost the whole pitching staff is back and if last year is any indication, we'll be very strong on the mound."

State, which has authored 20 or more wins in each of the last five seasons, returns 12 lettermen, of which seven are hurlers including John Skinner, who as a freshman, led the Atlantic Coast Conference last year on the mound.

Skinner, a righthander, pitched to a perfect 7-0 mark and a sparkling 1.23 earned run average. Other hurlers returning are lefthanders Tom Willette (4-3), Doug Huffman (4-4), Doug Satterwhite (2-0) Rich Spanton (3-1) and Bob Harrison (2-1) and righthander Frank Bryant (2-1).

Other pitchers who will see duty on the mound this spring include righthanders John Walker, Mike Garrell and Dave Whitmire and lefthander John Dury.

"This may be the strongest pitching staff I've ever had at N.C. State," says Esposito. "We've got a good blend of starters, long relievers and short relievers."

Anchoring the bats will be junior second-baseman Chuck Harman who hit .374 a year ago, finishing fifth in the league just .002 out of second.

Also returning are junior third baseman-outfielder Tom Crocker (.301), senior centerfielder Roy Dixon (.273) sophomore first baseman John Isley (.278) and sophomore third baseman-shortstop Ray Tanner (.277).

A pair of sophomores, John Meloy and Pat Sheehy, are expected to share the catching duties. Both saw limited action as freshman.

Esposito plans to use different combinations through the field, searching for a working combination. "We have the potential to have a great ball club this year, especially with the fine pitching staff. We just have to put the right people in the other spots," he says.

Dixon will once again play the centerfield spot, as he has steadily done so since coming to State. Joining him in the outer gardens could include junior college transfer Rich White, Crocker, who has played infield his first two years and Isley.

The infield will see a couple of new faces along with some returnees. Isley is expected back at first base while Harman returns to second. The shortstop spot could go to another junior college transfer, Bill Maier. With Crocker moving to the outfield, third base will find Ray Tanner, who anchored shortstop last season.

"Our weakness this year will be hitting," says Esposito, who hasn't come up with a designated hitter as of yet. "We'll have to scratch for a lot of runs. We have decent team speed, and we are better defensively than we were last year."

"We'll have to rely a lot this year on pitching and defense. If we end up being just as good as we were last year then I'll be pleased."

COVER PHOTO

The duotone is of senior centerfielder Roy Dixon as he squares around to bunt. More on Dixon is on page 4.

MEET THE WOLFPACK

* Indicates Letters Won

INFELDERS

Ricky Austin So. bats right SS/2B Charlotte, N.C.

Ricky Daryl played sparingly as a freshman . . . batted a respectable .292 in 24 at bats . . . will be used as a shortstop or at second this season . . . lettered twice in baseball at East Mecklenburg High and three times in wrestling . . . captained the baseball and wrestling teams his senior year . . . "Ricky is a fine fielder. We're looking for some good play out of him in the infield this year," says coach Esposito . . . born Mar. 31, 1958 . . . majoring in wood science and technology.

YEAR	G	AB	R	H	2B	3B	HR	RBI	SB	K	BB	AVG.
1977	12	24	7	7	0	0	0	2	0	3	1	.292

****Chuck Harmon Jr. bats right 2B/SS Arden, N.C.**

Charles Emory led the regulars in batting last season hitting .374 . . . has excellent quickness and good range . . . has played organized baseball since the third grade . . . finished fifth in the ACC batting race last season just .002 out of second . . . "He's a solid player for us," says coach Esposito. "Chuck will be one of the team leaders in the field" . . . brother Eddie was standout at Georgia Tech in the early 60's . . . three-sport letterman at Robeson High, winning MVP award in baseball and football . . . born Nov. 25, 1957 . . . majoring in Civil Engineering.

YEAR	G	AB	R	H	2B	3B	HR	RBI	SB	K	BB	AVG.
1976	20	50	9	13	2	0	0	4	2	10	1	.260
1977	35	115	26	43	6	1	3	18	10	14	7	.374
	55	165	65	55	8	1	3	22	12	24	8	.333

***John Isley So. bats left 1B/OF Wilmington, N.C.**

John Aycock performed well as a starter at first base his freshman year . . . hit .278 . . . played a reserve role on the football team at quarterback . . . turned down a five-figure bonus offer from the Baltimore Orioles to come to State . . . led Hoggard High to state 4-A playoffs, batting well over .400 . . . showed excellent varsatility, performing as a pitcher, first baseman and outfielder . . . "John really came on strong at the end of the season last year," says coach Esposito. "He has a good eye for the ball" . . . swing is similar to that of Ted Williams . . . born June 9, 1958 . . . in the School of Liberal Arts.

YEAR	G	AB	R	H	2B	3B	HR	RBI	SB	K	BB	AVG.
1977	38	126	24	35	5	0	2	16	1	13	15	.278

Bill Maier Jr. switch hitter SS Butler, Pa.

William Robert is a transfer from Butler County Community College where he was an all-conference performer two years . . . pitched a perfect game as his team won the state championship . . . was a two-year letterman in baseball at Butler High School and earned three letters in basketball . . . expected to fill a gap in the infield . . . "Bill is a fine baseball player. He has a stable infield game and should do a good job right away for us," says coach Esposito . . . born Sept. 19, 1957 . . . majoring in Recreation.

***Ray Tanner So. bats right 3B/SS Benson, N.C.**

Donald Ray will move to third base this season after a steady freshman year at shortstop . . . hit .277 last spring with more at

bats (141) than any other State player . . . was third in hits for the Wolfpack with 39 . . . was a four year starter at South Johnston High and had hitting averages of .244, .391, .365, and .413 . . . an intense and rugged player . . . "Ray had a good freshman year for us. He was the most consistant RBI man in clutch situations. If third base doesn't work out for him, he'll be playing somewhere for us. He's too good of a player not to," says coach Esposito . . . born Mar. 25, 1958 . . . majoring in Forest Resources.

YEAR	G	AB	R	H	2B	3B	HR	RBI	SB	K	BB	AVG.
1977	36	141	20	39	4	0	2	24	1	25	10	.277

OUTFIELDERS

***Tom Crocker Jr. bats right 3B/LF Rocky Mount, N.C.**

John T., after a brilliant .398 hitting average his freshman year, dropped to .301 last season as a sophomore . . . will see some action in outfield this season after two years of anchoring thirdbase . . . was second in hits for the Wolfpack last season with 41 . . . walked 25 times . . . "We're going to experiment a little with Tommy this year," says coach Esposito. "He's such a good player, if he doesn't work out in the outfield, he'll be back at third" . . . made second team all-ACC as freshman . . . born Nov. 7, 1956 . . . majoring in Liberal Arts.

YEAR	G	AB	R	H	2B	3B	HR	RBI	SB	K	BB	AVG.
1976	27	83	20	33	4	2	1	11	9	7	11	.398
1977	39	136	18	41	8	1	0	10	6	12	25	.301
	66	219	38	74	12	3	1	21	15	19	36	.338

*****Roy Dixon Sr. bats right CF High Point, N.C.**

Roy Lawson has been a fixture in centerfield since reporting for practice as a freshman . . . excels in all phases of the game—at the plate, in the field and on the base paths . . . was among the team's RBI leader's last season with 21 while hitting just .273 . . . a longball threat due to great wrist action . . . hit five homers as a freshman, one as a sophomore and three last spring . . . "Roy has been a steady ball player for us the last three years and his leadership along with baseball ability will be a great asset to us this season," says coach Esposito . . . born March 19, 1957 . . . majoring in Electrical Engineering.

YEAR	G	AB	R	H	2B	3B	HR	RBI	SB	K	BB	AVG.
1975	33	123	15	33	4	0	5	19	4	21	7	.268
1976	32	127	17	33	4	2	1	18	3	27	6	.260
1977	38	139	21	38	6	3	3	21	2	22	6	.273
	103	389	53	104	14	5	9	58	9	70	19	.267

Rich White Jr. bats right RF Hamilton, Ohio

Paul Richard comes to the Wolfpack from Columbia State Junior College in Columbia, Tenn., where he helped pace the baseball team to the state title in 1976 and a second place finish in the nation . . . that team broke the national team hitting record that year . . . hit the state title winning homer in bottom of the 10th inning to win the championship contest . . . was an all-league performer at Fairfield Senior High his senior year . . . also won the Playmaker Award on his high school basketball team the same year . . . "Rich is a steady player and a fine outfielder. He should give us some offensive punch," says coach Esposito . . . born August 10, 1957 . . . majoring in history.

CATCHERS

John Meloy So. bats right Indianapolis, Ind.

John Bernard will vie for the catchers position along with Pat Sheehy . . . saw limited duty as a freshman . . . was a three-year

starter at Chatard High, sparking the team to an overall 84-19 record during the span, including one regional and two city championships . . . lettered in three sports his senior year, playing in the defensive secondary in football and at guard in basketball . . . "John is a real competitor and has great potential as a baseball player at State," says coach Esposito . . . born June 2, 1958 . . . majoring in textiles.

YEAR	G	AB	R	H	2B	3B	HR	RBI	SB	K	BB	AVG.
1977	10	14	2	2	0	0	0	1	0	2	0	.143

Pat Sheehy So. bats right Monroeville, Pa.

Patrick Michael saw limited action at catcher last season but is expected to battle John Meloy for the starting spot . . . batted .444 in nine trips to the plate last season . . . was a three-year starter at Gateway High, sparking the team to an overall 60-15 record . . . all-Big Four first-team selection his senior campaign . . . hit .485 as a sophomore . . . led Gateway to two sectional titles . . . captained baseball and football teams as a senior . . . "Pat has what it takes to be a good catcher," says coach Esposito . . . born July 12, 1958 . . . majoring in Business Management.

YEAR	G	AB	R	H	2B	3B	HR	RBI	SB	K	BB	AVG.
1977	5	9	1	4	1	0	0	2	0	0	0	.444

PITCHERS

***Frank Bryant So. righthander Boykins, Va.**

Franklin Simmons is expected to be in starting rotation . . . enjoyed a good season on the mound as a freshman . . . started five games, coming a 2-1 record . . . a big, strong man on the mound . . . stands 6-3 and weighs 185 pounds . . . chosen all-state his senior year and won team MVP award three consecutive seasons . . . also all-state in football (QB) and basketball . . . team captain in three-sports . . . "Frank might just have the hardest stuff on the staff. He just needs to work on his consistency," says coach Esposito . . . born May 22, 1958 . . . majoring in Agronomy.

YEAR	G	GS	CG	IP	R	ER	H	BB	K	Won	Lost	ERA
1977	8	5	2	32 $\frac{1}{3}$	27	18	41	30	36	2	1	5.02

John Dury So. lefthander Indianapolis, Ind.

John Leonard will be used in relief with some spot starting . . . came off the bench to pick up one save . . . had a 0.80 ERA in 11 $\frac{1}{3}$ innings . . . posted a 8-1 record for Chatard High, pitching five shutouts and three one-hitters . . . one of three Chatard High grads on Wolfpack roster, the other two being John Meloy and Rich Spanton . . . also lettered in football at tight end . . . excellent sizes at 6-3, 225 . . . "John needs a little work, but he should develop into an excellent college pitcher," says coach Esposito . . . born July 15, 1958 . . . majoring in Business Management.

YEAR	G	GS	CG	IP	R	ER	H	BB	K	Won	Lost	ERA
1977	3	0	0	11 $\frac{1}{3}$	4	1	5	9	8	1	0	0.80

****Bob Harrison Jr. lefthander Virginia Beach, Va.**

Robert Owen worked mainly in relief last year, starting one game enroute to a 2-1 record . . . had better freshman year at 3-0 and a 1.82 ERA . . . will spot start and come in on relief this season . . . may play some outfield or as a designated hitter . . . has good curve and good control . . . "Bob is going to be good in relief for us this year," says coach Esposito . . . as a senior in Kempsville High, his ERA was an incredible .000 as he

authored an 11-0 mark . . . was occassionally used as a pinch hit-
ter last season and batted .250 . . . born Sept. 3,
1957 . . . Preveterinarian major.

YEAR	G	GS	CG	IP	R	ER	H	BB	K	Won	Lost	ERA
1976	4	4	1	24 $\frac{2}{3}$	8	5	21	17	10	3	0	1.82
1977	4	1	0	9 $\frac{1}{3}$	9	4	11	3	5	2	1	3.87
	8	5	1	34	17	9	32	20	15	5	1	2.38

***Doug Huffman Jr. lefthander Brazil, Ind.**

Douglas Lee is expected in the starting rotation after a steady performance last season . . . record of 4-4 does not reflect his overall power and talent . . . pitched second most innings for State (57 $\frac{1}{3}$) behind John Skinner's 73 . . . was 1-0 as a freshman . . . has the size (6-3, 205) of a strong hurler . . . led Staunton (Ind.) High to sectional championship his senior year with an 8-1 record . . . hurled 12 scoreless innings during the playoffs . . . played outfield when not on the mound and batted .411 . . . lettered in four sports at Staunton—baseball, basketball, cross country and track . . . "Doug is one of our steadiest pitchers. He's a control or command pitcher. He gets ahead of the batter and can throw strikes. Doug is a very good competitor," says coach Esposito . . . born Jan. 21, 1957 . . . majoring in business administration.

YEAR	G	GS	CG	IP	R	ER	H	BB	K	Won	Lost	ERA
1976	2	2	1	14	3	3	12	4	10	1	0	1.89
1977	10	7	4	57	25	19	55	17	31	4	4	2.98
	12	9	5	71	28	22	67	21	41	5	4	2.76

***Doug Satterwhite Jr. lefthander Oxford, N.C.**

Douglas Ray posted a 2-0 record last year in limited action, seeing just 9 $\frac{2}{3}$ innings on the mound . . . was 3-0 as a freshman . . . has a good assortment of pitches . . . works hard on the mound . . . "Doug is a steady pitcher and will be a valuable member of the staff this year," says coach Esposito . . . aided J.F. Webb High to three consecutive conference titles . . . lettered three years at Webb and was named MVP as junior and senior . . . also starred in football as quarterback . . . pitched no-hitter in senior year, striking out 20 of 23 batters . . . born Aug. 9, 1957 . . . education major.

YEAR	G	GS	CG	IP	R	ER	H	BB	K	Won	Lost	ERA
1976	6	4	1	28 $\frac{2}{3}$	9	5	17	22	17	3	0	1.57
1977	4	1	0	9 $\frac{2}{3}$	3	3	8	10	6	2	0	2.79
	10	5	1	38 $\frac{1}{3}$	12	8	25	32	23	5	0	1.88

***John Skinner So. righthander Fowler, Ind.**

When John David turned down a bonus offer from the Los Angeles Dodgers to accept a scholarship at State, the Wolfpack received a prize possession . . . authored a brilliant 7-0 record as a freshman with a 1.23 earned run average . . . tops in the Atlantic Coast Conference . . . fourth best ERA in NCAA . . . first team all-conference . . . was all-state and all-conference his senior year at Benton Central High with a 23-9 mark . . . "I can't say enough about John," says coach Esposito. "His excellent year last season was an unusual one as far as winning seven games as a freshman. I expect him to be as good or better this season. John needs to work on control and try to get ahead of the batter" . . . has a good fast and excellent curve ball . . . was also all-conference in football as a defensive back at Benton Central . . . born May 3, 1958 . . . majoring in Conservation.

YEAR	G	GS	CG	IP	R	ER	H	BB	K	Won	Lost	ERA
1977	10	10	5	73	16	10	44	39	75	7	0	1.23

****Rich Spanton Jr. lefthander Indianapolis, Ind.**

Richard Matthew bounced back last season from a poor sophomore showing . . . put together a 3-1 record with a respectable 2.43 ERA . . . expected to be a regular . . . has a good curve ball . . . was just 2-5 as a soph while 4-2 his initial year . . . experienced pitcher who should be able to help in clutch situations . . . "We're hoping Rich bounces back to his form of his freshman season. I expect a good year out of him," says coach Esposito . . . born Sept. 10, 1956 . . . in School of Liberal Arts.

YEAR	G	GS	CG	IP	R	ER	H	BB	K	Won	Lost	ERA
1975	8	8	4	61 $\frac{1}{3}$	19	14	48	26	33	4	2	2.06
1976	8	7	2	55	25	17	45	20	37	2	5	2.78
1977	7	6	3	37	14	10	21	19	26	3	1	2.43
	23	21	9	153 $\frac{1}{3}$	58	41	114	65	96	9	8	2.41

John Walker Jr. righthander Raleigh, N.C.

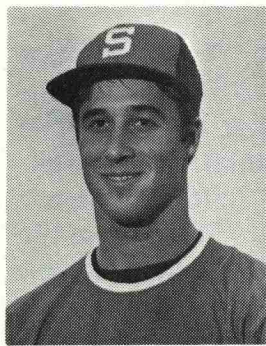
John William works in late inning relief . . . has picked up two wins in two years coming out of the bullpen . . . attended Raleigh's Cardinal Gibbons High School where he lettered in baseball, basketball and soccer . . . named MVP in baseball and basketball his senior year as well as being team captain . . . tossed a no-hitter against Epsom High School, striking out 20 batters . . . "John gives us good late inning relief," says coach Esposito . . . born Feb. 13, 1957.

YEAR	G	GS	CG	IP	R	ER	H	BB	K	Won	Lost	ERA
1976	2	0	0	5	0	0	4	3	0	0	0	0.00
1977	7	0	0	13 $\frac{2}{3}$	13	10	18	5	15	2	2	6.58
	9	0	0	18 $\frac{2}{3}$	13	10	22	8	15	2	2	4.82

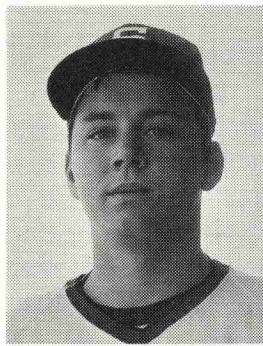
****Tom Willette Jr. lefthander Plymouth, Mich.**

Thomas Martin is expected in the starting rotation this spring . . . was 4-3 last season with a 2.72 ERA . . . has a good fast ball . . . showed power in ACC Tournament last spring with a 6-2 decision over Maryland in which he went all the way . . . "Tom has real good stuff and I just hope his form against Maryland carries over to this season," says coach Esposito . . . was a fifth round draft choice by the San Diego Padres and offered a sizeable contract, but opted for State instead, after a fine career at Salem High . . . born July 13, 1957 . . . majoring in history.

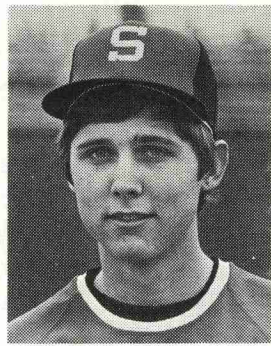
YEAR	G	GS	CG	IP	R	ER	H	BB	K	Won	Lost	ERA
1976	9	6	2	46	18	11	35	27	35	4	3	2.15
1977	9	9	5	56 $\frac{1}{3}$	22	17	43	34	48	4	3	2.72
	18	15	7	102 $\frac{1}{3}$	40	28	78	61	83	8	6	2.46



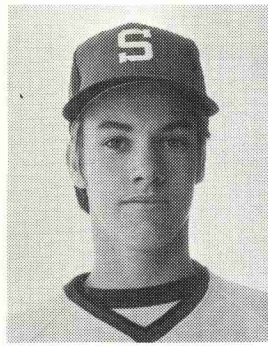
Bryant



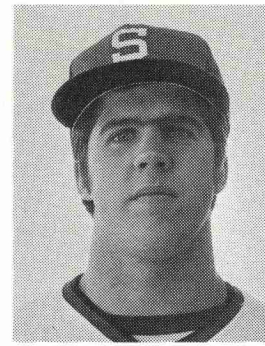
Crocker



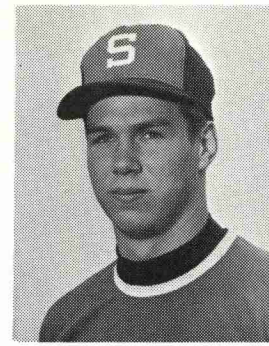
Dixon



Harmon



Harrison



Isley

1978 NORTH CAROLINA STATE BASEBALL ROSTER

ALPHABETICAL

No.	Name	Pos.	Bats	Throws	Ht.	Wt.	Birthdate	Class	Hometown
3	Ricky Austin	SS/2B	R-R	5-7	145	3-31-58	So.	Charlotte, N.C.	
26	*Frank Bryant	P	R-R	6-3	185	5-22-58	So.	Boykins, Va.	
—	Nelson Carlton	OF	R-R	6-0	195	7-5-59	Fr.	Warsaw, N.C.	
24	*Tom Crocker	3B/OF	R-R	5-11	175	11-7-56	Jr.	Rocky Mount, N.C.	
16	*Roy Dixon	OF	R-R	6-2	180	3-19-57	Sr.	High Point, N.C.	
18	John Dury	P	L-L	6-3	225	7-15-58	So.	Indianapolis, Ind.	
—	Shawn Ervin	C	R-R	5-9	160	10-20-58	Fr.	Moorseville, N.C.	
11	Mike Garrell	P	R-R	6-2	185	8-23-58	So.	Tabor City, N.C.	
6	*Chuck Harmon	2B	R-R	5-8	145	11-25-57	Jr.	Arden, N.C.	
29	*Bob Harrison	P	L-L	5-11	190	9-3-57	Jr.	Virginia Beach, Va.	
13	Gary Holbrooks	P	R-R	6-4	215	6-23-58	So.	Concord, N.C.	
27	*Doug Huffman	P	L-L	6-3	205	1-21-57	Jr.	Brazil, Ind.	
20	*John Isley	1B	L-R	6-5	205	6-9-58	So.	Wilmington, N.C.	
—	Don Klas	P	R-R	6-2	163	11-23-58	So.	Raleigh, N.C.	
—	Mark Lackey	1B	R-R	5-11	190	9-4-58	Fr.	High Point, N.C.	
23	Ronnie Lee	IF/OF	L-R	5-10	175	5-8-59	Fr.	Garner	
14	Bill Maier	SS	S-R	6-0	175	9-19-57	Jr.	Butler, Pa.	
19	John Meloy	C	R-R	6-0	180	6-2-58	So.	Indianapolis, Ind.	
2	David Moody	OF	L-R	6-0	184	4-14-55	Sr.	Asheboro, N.C.	
—	Jere Morton	P/1B	R-R	6-2	200	8-3-59	Fr.	Raleigh, N.C.	
17	Dave Satterwhite	C	R-R	6-1	180	8-9-57	So.	Oxford, N.C.	
12	*Doug Satterwhite	P	R-L	5-10	165	8-9-57	Jr.	Oxford, N.C.	
—	Tom Satterwhite	IF	R-R	5-10	165	1-9-59	Fr.	Oxford, N.C.	
25	Pierce Sawyer	1B/OF	R-R	6-0	185	10-14-56	Sr.	Charlotte, N.C.	
5	Pat Sheehy	C	R-R	6-0	166	7-12-58	So.	Monroeville, Pa.	
—	Rich Simons	OF	L-L	5-10	165	8-2-58	Fr.	Rochester, N.C.	
8	*John Skinner	P	L-R	6-0	170	5-3-58	So.	Fowler, Ind.	
21	*Rich Spanton	P	R-L	5-11	170	9-10-56	Sr.	Indianapolis, Ind.	
1	*Ray Tanner	3B/SS	R-R	5-7	172	3-25-58	So.	Benson, N.C.	
15	John Walker	P	R-R	6-2	185	2-13-57	Jr.	Raleigh, N.C.	
7	Rich White	OF	R-R	5-10	165	8-10-57	Jr.	Hamilton, Ohio	
22	Dave Whitmire	P	R-R	5-9	190	12-16-56	Jr.	Franklin, N.C.	
28	*Tom Willette	P	L-L	6-1	175	7-13-57	Jr.	Plymouth, Mich.	

*Lettermen

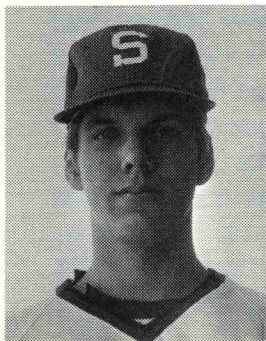
4 Coach Sam Esposito

9 Assistant Kent Juday

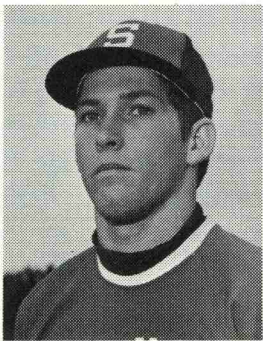
30 Assistant Jim Edwards

NUMERICAL ORDER

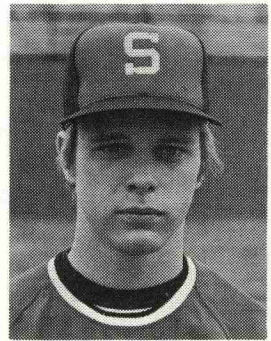
No.	Name	Pos.
1	Ray Tanner, 3B/SS	
2	David Moody, OF	
3	Ricky Austin, SS/2B	
4	Coach Sam Esposito	
5	Pat Sheehy, C	
6	Chuck Harmon, 2B	
7	Rich White	
8	John Skinner, P	
9	Asst. Kent Juday	
11	Mike Garrell, P	
12	Doug Satterwhite, P	
13	Gary Holbrooks, P	
14	Bill Maier, SS	
15	John Walker, P	
16	Roy Dixon, OF	
17	Dave Satterwhite	
18	John Dury, P	
19	John Meloy, C	
20	John Isley, 1B	
21	Rich Spanton, P	
22	Dave Whitmire, P	
23	Ronnie Lee	
24	Tom Crocker, 3B/OF	
25	Pierce Sawyer, 1B/OF	
26	Frank Bryant, P	
27	Doug Huffman, P	
28	Tom Willette, P	
29	Bob Harrison, P	
30	Asst. Jim Edwards	



Willette



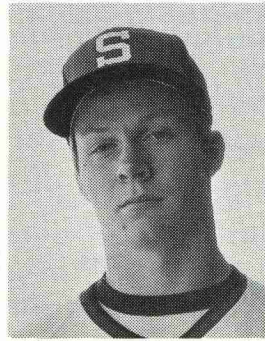
Tanner



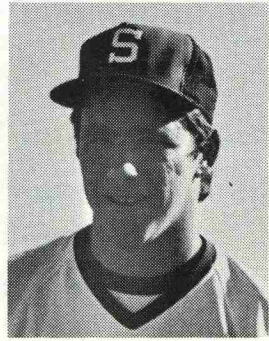
Spanton



Skinner



Satterwhite



Huffman

1977 STATISTICS

Won 27, Lost 12; ACC: 7-7

BATTING

Avg.	Name	G	AB	R	H	RBI	2B	3B	HR	TB	SB	BB	K
.374	Harmon, 2B	35	115	26	43	18	6	1	3	60	10	7	14
.356	FELDKAMP, C	25	59	3	21	16	4	2	0	29	0	10	9
.301	Crocker, 3B	39	136	18	41	10	8	1	0	51	6	25	12
.294	REISTER, 2B/LF	32	85	17	25	12	3	0	1	31	9	15	18
.278	Isley, 1B/LF	38	126	24	35	16	5	0	2	46	1	15	13
.277	Tanner, SS	36	141	20	39	24	4	0	2	49	1	10	25
.273	Dixon, CF	38	139	21	38	21	6	3	3	59	2	6	22
.258	Moody, LF/DH	35	120	20	31	17	5	2	2	46	4	19	19
.250	CHAPPELL, RF	38	128	34	32	26	6	1	9	67	11	20	25
.250	SMODIC, 1B/DH	23	72	9	18	12	1	3	2	31	1	14	18
.232	PORT, DH/C	21	56	5	13	4	2	0	0	15	2	7	10

NON-REGULARS

.444	Sheehy, C	5	9	1	4	2	1	0	0	5	0	0	0
.292	Austin, 2B	12	24	7	7	2	0	0	0	7	0	1	3
.250	Harrison, P/DH	4	4	1	1	1	0	0	0	1	0	0	1
.143	Meloy, C	10	14	2	2	1	0	0	0	2	0	0	2

.285	N. C. STATE	39	1228	208	350	182	51	13	24	499	47	149	191
.225	OPPONENTS	39	1220	146	274	124	26	6	7	345	31	177	255

PITCHING

W	L	Pitcher	G	GS	CG	IP	R	ER	H	BB	K	SV	ERA
7	0	Skinner	10	10	5	73	16	10	44	39	75	0	1.23
2	0	Satterwhite	4	1	0	9½	3	3	8	10	6	0	2.79
1	0	Dury	3	0	0	11½	4	1	5	9	8	1	0.80
3	1	Spanton	7	6	3	37	14	10	21	19	26	1	2.43
4	3	Willette	9	9	5	56½	22	17	43	34	48	0	2.72
2	1	Harrison	4	1	0	9½	9	4	11	3	5	0	3.87
2	1	Bryant	8	5	2	32½	27	18	41	30	36	0	5.02
4	4	Huffman	10	7	4	57½	25	19	55	17	31	0	2.98
2	2	WALKER	7	0	0	13½	13	10	18	5	15	1	6.58
0	0	Garrell	3	0	0	3½	0	0	0	3	1	0	0.00
0	0	WATKINS	7	0	0	17½	6	5	20	3	4	2	2.60
0	0	Whitmire	3	0	0	4½	7	7	8	5	0	0	13.49

27	12	N. C. STATE	39	39	19	325½	146	104	274	177	255	5	2.88
12	27	OPPONENTS	39	39	18	316	208	156	350	149	191	0	4.44

Players in CAPS not returning in 1978.

RESULTS

	R	H	E	LOB	Opponents	R	H	E	LOB	State Pitcher of Record
(W)	4	5	0	5	William & Mary (7 inn.)	2	5	0	5	WILLETTE (*)
(W)	3	8	2	6	William & Mary (7 inn.)	2	6	1	7	BRYANT (*)
(L)	2	5	2	3	High Point	4	8	0	5	Huffman (*)
(W)	3	10	0	7	UNC-Wilmington	1	1	4	5	SKINNER (*)
(L)	1	3	2	3	Richmond (7 inn.)	4	6	0	3	Willette (*)
(W)	6	7	0	6	Richmond (7 inn.)	0	2	2	3	SPANTON (*)
(L)	2	3	2	4	Madison	3	11	1	9	Bryant (S)
(L)	3	7	8	8	East Carolina (7 inn.)	7	9	1	7	Harrison (S)
(W)	1	4	0	6	East Carolina (7 inn.)	0	6	4	7	HUFFMAN (*)
(W)	4	6	1	7	Atlantic Christian	1	6	0	6	SKINNER (*)
(W)	7	10	3	5	Elon	6	10	1	5	WALKER (R)
(W)	19	14	4	9	Pembroke State	9	7	8	10	DURY (R)
(W)	11	12	3	8	Campbell	9	15	3	16	HARRISON (R)
(W)	4	7	2	8	Campbell	2	10	0	9	HUFFMAN (*)
(W)	1	7	2	8	East Carolina (10 inn.)	0	1	1	7	SKINNER (S)
(W)	10	16	0	9	East Carolina (7 inn.)	2	5	1	5	WILLETTE (*)
(W)	2	11	1	12	Dartmouth	1	4	1	7	SATTERWHITE (S)
(W)	6	7	2	8	Dartmouth (7 inn.)	4	5	2	8	HARRISON (R)
(W)	3	8	0	5	Dartmouth (7 inn.)	1	2	0	7	SKINNER (S)
(L)	1	3	0	4	UNC-Chapel Hill	2	6	0	7	Walker (R)
(L)	9	13	3	7	Maryland	14	10	2	5	Huffman (S)
(W)	6	9	0	6	Virginia	0	6	2	11	SKINNER (*)
(W)	8	10	1	8	Pfeiffer	1	2	4	6	SPANTON (*)
(L)	3	10	2	9	Clemson	7	9	0	8	Willette (S)
(L)	4	6	0	8	Elon	6	7	2	6	Walker (R)
(L)	1	8	3	8	UNC-Chapel Hill	2	5	0	4	Huffman (*)
(W)	7	7	1	5	Pfeiffer	4	11	3	13	WALKER (R)
(W)	3	9	1	7	Atlantic Christian	1	5	2	6	SPANTON (*)
(W)	1	4	0	5	Maryland	0	5	1	5	SKINNER (*)
(W)	8	9	4	6	Virginia	1	5	1	5	WILLETTE (*)
(W)	9	16	0	12	Wake Forest	3	8	4	10	HUFFMAN (S)
(W)	15	18	3	11	Duke	3	8	4	11	SKINNER (*)
(W)	8	10	2	5	Towson State (7 inn.)	2	4	2	7	BRYANT (*)
(W)	10	13	3	9	Towson State (7 inn.)	3	5	4	7	SATTERWHITE (R)
(L)	2	6	2	11	Wake Forest	8	11	1	6	Willette (S)

ACC TOURNAMENT

(W)	6	7	2	8	UNC-Chapel Hill	5	8	1	9	HUFFMAN (R)
(L)	3	8	2	4	Clemson	10	15	2	15	Spanton (S)
(W)	6	14	2	12	Maryland	2	8	1	11	WILLETTE (*)
(L)	6	20	3	12	Clemson	14	17	0	13	Huffman (R)

208 305 68 284

146 274 68 296

(*) Complete game (S) Starter (R) Relief

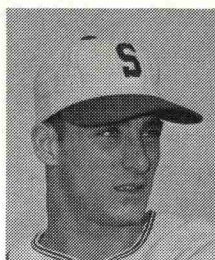
WOLFPACK HONOR ROLL



Yvars



Turney



Santoli



Martin

ALL-AMERICAS

Johnny Yvars	shortstop	1952	third team
		1954	first team
Jack Turney	second base	1954	second team
Carmen Santoli	outfield	1956	second team
Steve Martin	outfield	1968	second team
Chris Cammack	third base	1969	second team

ALL-NCAA DISTRICT 3

Bill Peed	first base	1955	first team
Bob Kennel	catcher	1956	first team
Steve Martin	outfielder	1968	first team
Chris Cammack	third base	1968	second team
	third base	1969	first team
	third base	1970	second team
Tommy Smith	outfielder	1970	second team

ALL-SOUTHERN CONFERENCE

Bill Evans	outfield	1949	first team
Bill Fowler	catcher	1950	first team
Johnny Yvars	shortstop	1952	first team
Lunsford Lewis	pitcher	1953	first team
John Fuscoe	outfield	1952	first team

ALL-ATLANTIC COAST CONFERENCE

(First Team Selections Only)

Johnny Yvars	shortstop	1954
Jack Yvars	pitcher	1954
Jack Turney	second base	1954
Billy Peed	first base	1955, 1956
Dudley Whitley	shortstop	1955, 1956
Lou Dickman	pitcher	1956
Carmen Santoli	outfield	1956
Dick Hunter	outfield	1957, 1958
Bob Kennel	catcher	1957, 1958
Eddie Wyant	first base	1957
Don Hafer	outfield	1959
Danny Casteen	first base	1958
Russ Casteen	outfield	1958
Jimmy Cox	second base	1960
Joel Gibson	pitcher	1961
Vernon Strickland	utility infield	1961
Bob Conner	pitcher	1962
Wayne Edwards	shortstop	1962
Chris Cammack	third base	1968, 1969, 1970, 1971
Steve Martin	outfield	1968
Tommy Smith	outfield	1970
Mike Caldwell	pitcher	1970, 1971
Rick Richardson	first base	1972
Mike Baxter	outfield	1972
Don Zagorski	first base	1973, 1974
Ron Evans	third base	1974, 1975
Bill Smodic	first base	1975
Mike Dempsey	pitcher	1975
Dick Chappell	outfield	1977
John Skinner	pitcher	1977

ACC PLAYER OF THE YEAR

(First Awarded 1969, By Vote of ACC Coaches)

1969	Chris Cammack, N. C. State, 3B
1971	Mike Caldwell, N. C. State, P

WOLFPACK RECORDS IN ATLANTIC COAST CONFERENCE

ACC CHAMPIONSHIPS

Year	Coach	Record	Year	Coach	Record
1968	Sam Esposito	25-9	1974	Sam Esposito	22-12
1973	Sam Esposito	23-10	1975	Sam Esposito	27-7

NCAA DISTRICT CHAMPIONSHIP

Year	Coach	Record
1968	Sam Esposito	25-9

INDIVIDUAL BATTING RECORDS

Average

Player	Year	Total
Chris Cammack	1969	.429
Bob Kennel	1956	.415
Joe Barringer	1955	.407
Tommy Crocker	1976	.398
Dick Chappell	1975	.390
Chris Cammack	1971	.381
Tommy Smith	1970	.379
Dave Moody	1975	.376
Bill Peed	1956	.375
Chuck Harmon	1977	.374
Sonny Santoli	1956	.372
Vernon Strickland	1961	.371
Steve Martin	1968	.370
Dudley Whitley	1956	.369
Jimmy Cox	1960	.369
Bill Peed	1955	.366
Wayne Edwards	1962	.364
Dick Hunter	1958	.364
Bill Smodic	1975	.363
Steve Martin	1967	.360

Home Runs

Rick Richardson	1972	9
Dick Chappell	1977	9
Bill Smodic	1975	7
Don Montgomery	1963	6
Don Zagorski	1973	6

Triples

*Bill Peed	1955	10
Dudley Whitley	1956	5

Doubles

Bill Smodic	1975	10
Ron Evans	1975	10
Don Zagorski	1975	9
George Hayworth	1962	9
Bill Glad	1973	9
Freddie Combs	1966	8
Bill Smodic	1976	8
Jimmy Cox	1960	8
Jerry Mills	1971	8
Pat Korsnick	1973	8
Tom Crocker	1977	8

Hits

Steve Martin	1968	47
Chris Cammack	1968	46
Tommy Smith	1970	44
Chuck Harmon	1977	43
Dick Chappell	1975	41
Chris Cammack	1971	40
Dick Chappell	1976	40
Chris Cammack	1969	39

Runs Scored

Steve Martin	1968	35
Dick Chappell	1977	34
Sonny Santoli	1956	32
Jerry Mills	1971	30
Clem Huffman	1968	29
Dudley Whitley	1956	29

Runs Batted In

Tommy Smith	1970	33
Bill Smodic	1975	32
Rick Richardson	1972	32
Pat Korsnick	1973	31
Bill Peed	1956	30
Dudley Whitley	1956	26
Steve Martin	1968	26
Dick Chappell	1977	26

Stolen Bases

Sonny Santoli	1956	21
Clement Huffman	1969	16
Rick Reister	1974	15
Rick Reister	1975	14
Mike Baker	1971	13
Dudley Whitley	1956	12
Clement Huffman	1968	12
Ron Evans	1972	12
Dick Chappell	1977	11

PITCHING

Seasonal Leaders (Four or more Decisions)

	Name	Record Won-Lost		ERA
1955	Lou Dickman	6	2	
1956	Lou Dickman	5	2	3.06
1957	Jim Walch	4	4	5.12
1958	Danny Casteen	3	1	4.05
1959	Wilson Carruthers	5	3	3.24
1960	Joel Gibson	7	4	2.72
1961	Joel Gibson	7	2	1.34
1962	Bob Conner	6	3	2.90
1963	Frank Perkinson	2	2	1.12
1964	Buck Johnson	5	5	2.83
1965	Kent Montgomery	3	1	0.94
1966	Buck Johnson	5	4	2.52
1967	Tom Haas	4	1	2.69
1968	Mike Caldwell	8	2	1.99
	Joe Frye	8	2	2.48
	Alex Cheek	8	2	3.07
1969	Mike Caldwell	8	3	1.66
1970	John Lewis	6	0	1.40
1971	Mike Caldwell	9	0	2.29
1972	Reid Carter	6	1	1.07
1973	Tim Stoddard	4	0	2.09
1974	Tim Stoddard	5	1	2.79
1975	Tom Hayes	6	1	2.05
1976	Tom Willette	4	3	2.15
1977	John Skinner	7	0	1.23

Most Wins—9 by Mike Caldwell, 1971, 1969; Alex Cheek, 1968; Joe Frye, 1968

Best Won-Lost Record (6 or more games)—9-0 by Mike Caldwell, 1971

Lowest ERA—0.78 by Lewis Hardy, 1975

Most Strikeouts—93 by Mike Caldwell, 1971

Fewest Walks (45 innings or more)—16 by Bobby Conner, 1962; Buck Johnson, 1964; Bob Anderson, 1973

Fewest Hits (50 or more innings)—36 by Kent Montgomery, 1965

Most Complete Games—10 by Mike Caldwell, 1969

Most innings pitched—94 $\frac{2}{3}$ by Mike Caldwell, 1968

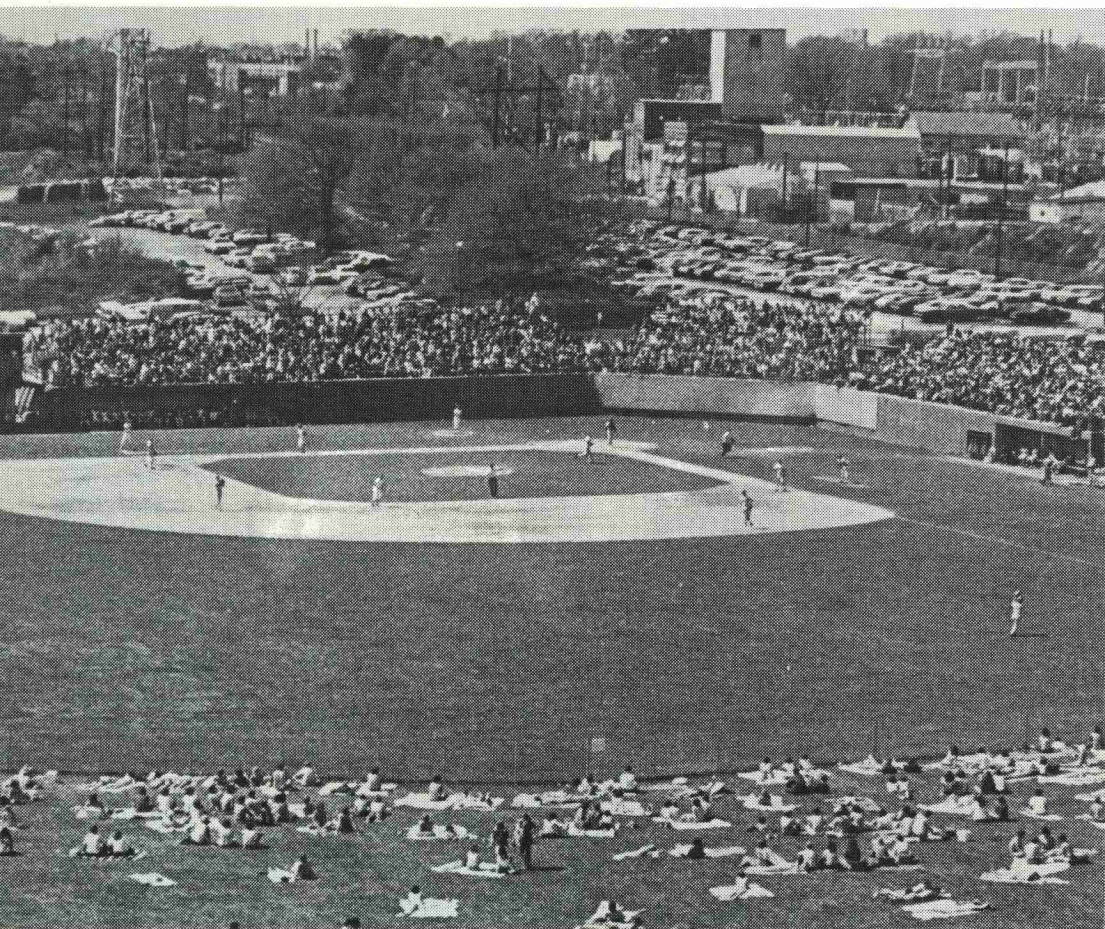
TEAM RECORDS

(Single Season)

Most Games—39 in 1977
Most Victories—27 in 1975, 1977
Most Losses—15 in 1964
Most at Bats—1,228 in 1977
Most Runs—232 in 1968
Most Opponents Runs—155 in 1974
Fewest Runs—82 in 1965
Fewest Opponents Runs—64 in 1965 and 1961
Most Hits—350 in 1977
Most Doubles—54 in 1975, 1976
Most Triples—19 in 1976
Most Home Runs—29 in 1975
Most Stolen Bases—59 in 1968
Most Walks—185 in 1971
Best Team Batting Average—.307 in 1956
Longest Winning Streak—11 games in 1975, 1977
Most Shutouts—6 in 1971, 1976
Longest Losing Streak—6 in 1967

Pitching

Lowest Earned Run Average—1.65 by 1975 team
Most Strikeouts—255 in 39 games by 1977 team
Fewest Base on Balls—46 in 18 games by 1961 team
Fewest Hits Allowed—125 in 17 games by 1958 team
Most Hits Allowed—286 in 34 games by 1974 team
Most Base on Balls—177 in 39 games by 1977 team
Most Complete Games—21 out of 34 by 1968 team



DOAK FIELD

NORTH CAROLINA STATE UNIVERSITY YEAR-BY-YEAR BASEBALL RECORDS

Year	Won	Lost	Tied	Coach
1903	10	3	0	
1904	10	12	0	C. D. Welch
1905	10	5	0	
1906	6	7	0	M. J. Kittredge
1907	14	8	0	
1908	21	4	0	Frank Thompson
1909	16	8	1	Frank Thompson
1910	15	1	3	Frank Thompson
1911	18	3	0	Frank Thompson
1912	13	6	1	Edward Greene
1913	6	0	0	Fred A. Anderson
1914	Records not available			Fred A. Anderson
1915	Records not available			Fred A. Anderson
1916	Records not available			
1917	5	8	0	Harry Hartsell
1918	11	5	1	Harry Hartsell
1919	12	11	0	T. H. Stafford
1920	14	6	0	W. McK. Fetzer
1921	10	10	2	Harry Hartsell
1922	13	7	0	Harry Hartsell
1923	13	7	1	Harry Hartsell
1924	18	4	0	Chick Doak
1925	14	4	0	Chick Doak
1926	7	13	0	Chick Doak
1927	2	10	0	Chick Doak
1928	12	6	0	Chick Doak
1929	9	9	0	Chick Doak
1930	8	10	1	Chick Doak
1931	11	8	0	Chick Doak
1932	6	7	2	Chick Doak
1933	9	4	0	Chick Doak
1934	9	11	1	Chick Doak
1935	10	9	0	Chick Doak
1936	11	8	0	Chick Doak
1937	7	12	0	Chick Doak
1938	7	8	2	Chick Doak
1939	5	8	0	Chick Doak
1940	3	9	0	Doc Newton
1941	3	10	0	Doc Newton
1942	6	9	0	Doc Newton
1943	3	10	0	Doc Newton
1944	1	12	0	Doc Newton
1945	7	6	0	Beattie Feathers
1946	11	4	0	Vic Sorrell
1947	9	13	0	Vic Sorrell
1948	8	13	1	Vic Sorrell
1949	8	12	0	Vic Sorrell
1950	16	9	0	Vic Sorrell
1951	10	10	0	Vic Sorrell
1952	15	10	0	Vic Sorrell
1953	11	9	0	Vic Sorrell
1954	8	8	0	Vic Sorrell
1955	13	4	0	Vic Sorrell
1956	14	5	1	Vic Sorrell
1957	8	10	0	Vic Sorrell
1958	10	7	0	Vic Sorrell
1959	8	12	0	Vic Sorrell
1960	12	8	0	Vic Sorrell
1961	13	5	0	Vic Sorrell
1962	11	10	0	Vic Sorrell
1963	9	10	0	Vic Sorrell
1964	8	15	0	Vic Sorrell
1965	10	10	1	Vic Sorrell
1966	11	12	2	Vic Sorrell
1967	11	11	0	Sam Esposito
1968	25	9	0	Sam Esposito
1969	17	11	0	Sam Esposito
1970	21	10	0	Sam Esposito
1971	18	11	1	Sam Esposito
1972	19	13	0	Sam Esposito
1973	23	10	1	Sam Esposito
1974	22	12	0	Sam Esposito
1975	27	7	0	Sam Esposito
1976	20	12	1	Sam Esposito
1977	27	12	0	Sam Esposito
Totals	838	612	23	

Athletics Administration

WILLIS R. CASEY Director of Athletics

The Director of Athletics at North Carolina State University is Willis R. Casey, who has served the University Athletics Department in several capacities for 32 years.

Casey was head swimming coach at N. C. State for 22 seasons, during which his teams posted a phenomenal dual-meet winning percentage of .866 and won outright or shared 11 Atlantic Coast Conference and Southern Conference swimming championships. State swimmers coached by Casey, who became Director of Athletics in July, 1969, won 123 individual ACC titles. In addition, he coached the league's first Olympic double gold medal winner, Steve Rerych.

Casey, a native of Goldsboro, joined the State staff in 1946 after graduating from the University of North Carolina. He was appointed assistant athletics director in 1949, and in 1967, he also became business manager of athletics. He assumed the directorship in July, 1969.

His 22 Wolfpack swimming teams never had a losing season, seven times posting undefeated records in dual-meet competition. His teams have won four NCAA and nine national individual AAU titles, as well as several AAU national team titles. He coached the American swimming team which represented the United States in Japan in 1959, and he took three Olympic champions to Paris, France, for swimming in 1969.

Casey has managed ACC and Dixie Classic Basketball Tournaments, and four NCAA Eastern Regional Basketball Championships, and championships in fencing and swimming have been organized under his direction.

WOLFPACK COACHING RECORD

Coach	Years	Won	Lost	Tied
C. D. Welch	1904 (1 yr.)	10	12	0
M. J. Kittredge	1906 (1 yr.)	6	7	0
Frank Thompson	1908-1911 (4 yrs.)	70	16	4
Edward Greene	1912 (1 yr.)	13	6	1
* Fred A. Anderson	1913-1915 (3 yrs.)	6	0	0
Harry Hartsell	1917-1918 (5 yrs.)			
	1921-1923	52	32	4
T. H. Stafford	1919 (1 yr.)	12	11	0
W. McK. Fetzer	1920 (1 yr.)	14	6	0
Chick Doak	1924-1939 (16 yrs.)	145	131	6
Doc Newton	1940-1944 (5 yrs.)	16	50	0
Beattie Feathers	1945 (1 yr.)	7	6	0
Vic Sorrell	1946-1966 (21 yrs.)	223	196	5
Sam Esposito	1967-	230	118	3

* All Records Not Available

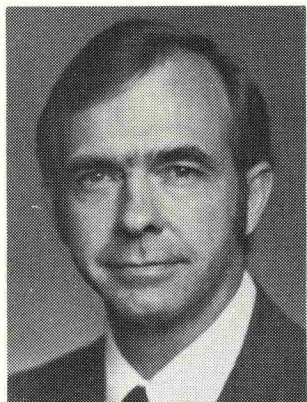
N. C. State Against ACC Competition

	Won	Lost
STATE vs. Clemson	27	31
STATE vs. Duke	35	19
STATE vs. N. Carolina	26	36
STATE vs. Maryland	29	21
STATE vs. S. Carolina*	21	14
STATE vs. Virginia	33	18
STATE vs. W. Forest	38	20
TOTALS	209	159

* No longer in ACC

North Carolina State University

North Carolina State University is a large and complex state university. A leading national higher education commission has classified NCSU as a Research University,



Dr. Joab L. Thomas
Chancellor

Class 1, testimony to its major role as a research institution. Its academic excellence is well represented in its 80-plus academic programs, a number of which are ranked among the top half dozen in the U. S.

N. C. State was founded under terms of the federal Land-Grant Act (the Morrill Act) of 1862 and shares the distinctive characteristic of these institutions—broad academic offerings, large scale extension and research programs, and extensive responsibilities in international

and national affairs.

The research work spans a broad spectrum of about 700 scientific, technological and scholarly endeavors of over \$20 million annually.

Its rich and varied academic programs are comprised of some 80 bachelors of arts and science, 68 masters and 46 doctoral degree fields.

Extension programs are similarly diverse and encompass such areas as urban affairs; marine sciences; environmental protection; engineering, industrial, business and textiles extension; agricultural extension and others.

The main campus of 600 acres (2500 in the Raleigh area) is valued at \$150 million and has 120 buildings. There are 4,600 employees, including the 1,600 faculty and professional staff members, 1,075 of whom are graduate faculty.

The University's total enrollment is approximately 17,700, of which 2,800 are in graduate programs. Students come from all 50 states and more than 60 nations, giving the University a rich cosmopolitan atmosphere.

Chancellor Thomas has described NCSU as a "magnet of progress," noting that its faculty have been attracted from more than 100 of the top universities of the nation and the world. Some 30 nations are represented. A recent study showed that the Research Triangle area has more Ph.D.'s proportionate to population than any other in the nation. The Triangle universities, State, Duke and UNC-Chapel Hill, plus the Research Triangle Park between them, constitute an extraordinary concentration of knowledge.

Opportunity and progress for individuals and society has always been guideposts for N. C. State. They still are, but now, with N. C. State's stature, the people are benefitting from the University's achievements at an accelerating rate.



1978 N. C. STATE BASEBALL SCHEDULE

March	3	at Elon	2:00
	4	MADISON	2:00
	5	EAST CAROLINA (2)	1:00
	6	PURDUE	2:00
	7	PURDUE (2)	1:00
	8	PURDUE	2:00
	9	at UNC-Wilmington	3:00
	10	at Atlantic Christian	3:00
	11	OLD DOMINION (2)	1:00
	12	WILLIAM AND MARY	2:00
	14	at High Point	3:00
	16	APPALACHIAN STATE	3:00
	17	at Pfeiffer	3:00
	18	GEORGE MASON	2:00
	19	CLEMSON	2:00
	20	DARTMOUTH	3:00
	21	DARTMOUTH	3:00
	22	DARTMOUTH	3:00
	23	ATLANTIC CHRISTIAN	3:00
	24	at Campbell	3:00
	26	CLEMSON	2:00
	28	PFEIFFER	3:00
	29	UNC-WILMINGTON	3:00
	30	at Duke	3:00
April	1	at Virginia	2:00
	2	at Maryland	2:00
	4	UNC-CHAPEL HILL	3:00
	5	WAKE FOREST	3:00
	6	CAMPBELL	3:00
	8	MARYLAND	2:00
	9	at Wake Forest	2:00
	11	DUKE	3:00
	12	HIGH POINT	3:00
	13	East Carolina (2-TN) at Rocky Mount	TBA
	14	ELON	3:00
	15	VIRGINIA	2:00
	16	at UNC-Chapel Hill	2:00
	19-23	ACC Tournament at site of regular season champion.	

Home Games in RED CAPS