

NORTH CAROLINA STATE COLLEGE

1962



Baseball

**Published by Department of Athletics
ROY B. CLOGSTON, DIRECTOR**

FOR FURTHER INFORMATION CONTACT:

FRANK WEEDON
Sports Information Director
Room 124, Reynolds Coliseum
Telephone: Office TEmple 3-5620
Home VAnce 8-5070

The 1962 Outlook

How far the Wolfpack goes this Spring probably will be decided on how well an unknown pitching staff does.

State should have good balance in the field and more consistency in hitting than last year, but Coach Vic Sorrell will have to look hard and long at his pitching staff to find a combination to match last year's graduated duo of Joel Gibson and Wilson Carruthers. Senior right-hander Bob Conner, the effective control artist, is back as the number one pitcher after compiling a 3-1 record last year. He had a 1.9 ERA in 1961.

Juniors Johnny Boughan, George Allen, and Doug Harris back up Conner, with Boughan's one inning of duty the only varsity action by this trio last year. Harris is a Louisburg Jr. College graduate.

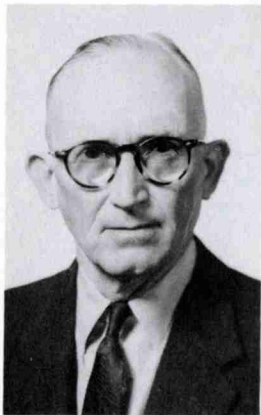
A letterman infield returns headed by third baseman Vernon Strickland, an all-ACC selection while hitting .371 last year. Strickland, Wayne Edwards at shortstop, Ray Russell at second and Jerry Cordell at first should be the number one infield.

Les Young and Don Montgomery, both lettermen, will be in the outfield, with Lineberger the likely choice in center. Roman Gabriel's power hitting will be missed in the outfield. Gabriel led the team in RBIs (18) and home runs (5) in 1961, but is ineligible since signing a pro football contract.

George Hayworth, who caught all 18 games last year, will again be the number one catcher.

"The lack of experienced pitching is our main problem," said Sorrell. However, if a couple of the young pitchers come through, we still might be able to do something in the ACC.

Vic Sorrell



Vic Sorrell, who has the longest tenure of any coach on the North Carolina State staff, begins his 17th season as head baseball coach of the Wolfpack.

His Wolfpack teams have won 168 games and lost 127 with one tie. Under Sorrell, 27 State players have gained all-conference honors, with three gaining all-America recognition.

Sorrell was with the Detroit Tigers of the American League for nine years and won 92 games and lost 101. His best season with the Tigers was in 1930 when he had a 16-11 record.

Vic, a native of Morrisville, N. C., played high school ball at Cary and Clayton, before enrolling at Wake Forest College in 1924. In his junior year he had an 8-0 record for the Deacons, and was signed to a Detroit contract in 1926. His first pro assignment was with Toronto of the International League where he had an 8-0 record as a rookie. His 14-7 record the following year at Toronto earned him a berth with the Tigers in 1928. He played on the American League championship teams of 1934 and 1935, and Vic calls his biggest thrill in baseball the Tigers' World Series victory of 1935.

Vic was sent to Toledo in 1938. He managed at Bluefield, W. Va., in 1939 and 1940, with the 1939 team winning the league's pennant. He retired from pro baseball in 1940 to enter defense work at the Wilmington shipyards, where he stayed until 1945.

Vic and his wife, Willa, have two daughters and a son, Vic, Jr., who is a freshman at State this year.

Wolfpack Baseball

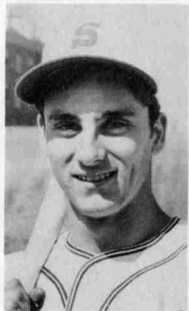
HONOR ROLL



Yvars



Turney



Santoli

All-Americans

Johnny Yvars	shortstop	1952	third team
		1954	first team
Jack Turney	second base	1954	second team
Carmen Santoli	outfield	1956	second team

All-NCAA District 3

Bill Peed	first base	1955	first team
Bob Kennel	catcher	1956	first team

All-Southern Conference

Bill Evans	outfield	1949	first team
Bill Fowler	catcher	1950	first team
	shortstop		
Johnny Yvars	shortstop	1952	first team
Lunsford Lewis	pitcher	1953	first team
John Fuscoe	outfield	1952	first team

All-Atlantic Coast Conference

Johnny Yvars	shortstop	1954	first team
Jack Yvars	pitcher	1954	first team
Jack Turney	second base	1954	first team
	second base	1954	first team
Billy Peed	first base	1955	first team
	first base	1956	first team
Dudley Whitley	shortstop	1955	first team
	shortstop	1956	first team
Joe Barringer	third base	1955	second team
Russell Casteen	outfield	1955	second team
Tommy Hargrove	pitcher	1955	second team
Lou Dickman	pitcher	1956	first team
Carmen Santoli	outfield	1956	first team
Eddie West	catcher	1956	second team
Dick Hunter	outfield	1957	first team
	outfield	1958	first team
Bob Kennel	catcher	1957	first team
	catcher	1958	first team
Eddie Wyant	first base	1957	first team
Don Hafer	outfield	1957	second team
	outfield	1959	first team
Danny Casteen	first base	1958	first base
	pitcher	1958	second team
Russ Casteen	outfield	1958	first team
Derris Bradshaw	second base	1958	second team
Glen Sparrow	second base	1959	second team
Jimmy Cox	second base	1960	first team
Joel Gibson	pitcher	1960	second team
	pitcher	1961	first team
Bernie Latusick	outfield	1960	second team
Vernon Strickland	utility infield	1961	first team
	third base	1961	second team

1962 North Carolina State Baseball Roster

No.	Name	Pos.	Bat-Throw	Ht.	Wt.	Age	Class	Hometown	1962 NUMERICAL BASEBALL ROSTER
4	Everett Baker	SS	R-R	5-7	155	19	So.	Wadesboro	
5	*Jerry Cordell	1B	L-R	6-0	200	21	Jr.	Raleigh	
2	*Wayne Edwards	SS	R-R	6-0	180	21	Sr.	Red Springs	1 George Hayworth, C
83	Ron Erb	OF	R-R	5-11	180	20	So.	Lansdale, Pa.	2 Wayne Edwards, SS
1	*George Hayworth	C	R-R	5-11	170	20	Jr.	High Point	3 Vernon Strickland, 3B
88	Thomas Hines	3B	R-R	6-2	180	20	Jr.	Raleigh	4 Everett Baker, SS
63	Jimmy Kirkman	CF	L-L	6-1	180	20	So.	Charlotte	5 Jerry Cordell, 1B
71	Warren Lineberger	2B	R-R	5-9	155	19	So.	Mount Holly	6 Don Montgomery, LF
6	*Don Montgomery	LF	R-R	6-2	205	20	Jr.	Albemarle	7 Les Young, RF
70	*Ray Russell	2B	R-R	5-7	155	21	Jr.	Roxboro	8 Bob Conner, P
3	*Vernon Strickland	3B	R-R	5-11	180	21	Sr.	Oxford	9 Joe Coors, P
7	*Les Young	RF	R-R	5-11	185	20	Jr.	Norwood	10 Doug Harris, P

Pitchers

72	George Allen	R-R	6-0	165	20	Jr.	Tarheel	62 John Boughan, P
62	John Boughan	R-R	6-0	190	20	Jr.	West Point, Va.	63 Jim Kirkman, CF
8	*Bob Conner	R-R	6-0	185	21	Sr.	Wilmington	70 Ray Russell, 2B
9	Joe Coors	L-R	6-1	155	20	So.	Golden, Col.	71 Warren Lineberger, 2B
10	Doug Harris	R-R	6-1	170	20	Jr.	Oxford	72 George Allen, P
78	Bob Lebenson	L-L	5-10	190	19	So.	Queens, N. Y.	78 Bob Lebenson, P
81	Frank McGirt	L-L	5-11	165	20	So.	Rowland	81 Frank McGirt, P
92	Mike Pellegrino	R-R	6-3	190	19	So.	Harvard, Ill.	83 Ron Erb, OF
HEAD COACH—Vic Sorrell								88 Thomas Hines, 3B
FRESHMAN COACH—Jim Edwards								92 Mike Pellegrino, P
ASSISTANT COACH—Harron "Junie" Floyd								
MANAGER—Sam Parker								

1961 RECORD

STATE			OPPONENTS			State Pitcher of Record	
R	H	E	R	H	E		
14	15	1	4	5	7	Conner (R)	
5	7	3	3	6	2	Carruthers (S)	
6	9	4	3	9	2	Gibson (S)	
13	17	1	1	5	1	Conner (S)	
9	11	6	8	10	5	Gibson (R)	
3(L)**	8	3	3	6	2	Gibson (S)	
3	6	2	2	7	0	Gibson (S)	
5	8	1	1	7	2	Carruthers (S)	
3(L)	8	2	4	8	3	Carruthers (S)	
3	8	1	1	8	1	Gibson (S)	
3	9	2	1	2	3	Conner (S)	
2	3	2	2	6	3	Gibson (S)	
6(L)	5	5	1	2	2	Gibson (S)	
4(L)**	9	2	11	13	3	Carruthers (S)	
10	12	0	5	7	1	Gibson (R)	
2(L)	5	2	3	7	5	Carruthers (S)	
4	5	1	4	11	0	Conner (R)	
14*	15	3	2	4	2	Gibson (S)	
			5	6	1	Gibson (R)	
109	160	39	64-127- 40				

* Did Not Count in ACC Standings
** 10 Innings

Final Record: Won 13 Lost 5

ACC—Won 8 Lost 5

FINAL 1961 STATISTICS

Player	G	AB	R	H	2B	3B	HR	RBI	BB	AVG
STRICKLAND	18	62	19	23	5	4	1	8	21	.371
CONNER	7	14	2	5	2	0	1	4	1	.357
MONTGOMERY	17	67	9	21	4	1	1	12	8	.313
EDWARDS	18	63	14	19	4	1	0	11	12	.302
Perry	17	70	16	20	3	1	0	10	7	.286
Gabriel	16	66	12	17	1	1	5	18	8	.258
RUSSELL	9	24	6	6	2	0	0	2	3	.250
HAYWORTH	18	64	5	15	3	0	0	7	8	.234
YOUNG	12	35	12	8	3	0	1	11	14	.229
Gibson	11	32	5	7	2	0	0	1	0	.219
CORDELL	15	47	4	10	3	0	0	6	7	.213
STATE	18	594	109	160	32	8	9	93	95	.269
OPPONENTS	18	592	64	128	25	3	5	48	46	.216

PITCHING

	GS	CG	IP	R	ER	BF	H	BB	SO	Won	Lost	ERA
Gibson	7	5	66-2/3	18	10	272	52	20	61	7	2	1.34
CONNER	4	1	33	11	7	130	23	6	23	3	1	1.90
CARRUTHERS	7	3	52-2/3	34	19	231	50	19	39	3	2	3.24
BOUGHAN	0	0	1	0	0	3	0	0	0	0	0	0.00
TOTALS	18	9	156-2/3	64	36	649	127	46	126	13	5	2.06

Names in Capital Letters Returning in 1962.



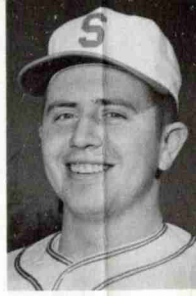
Allen



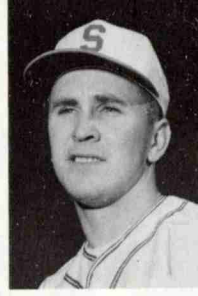
Boughan



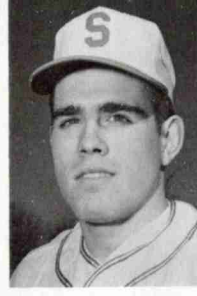
Conner



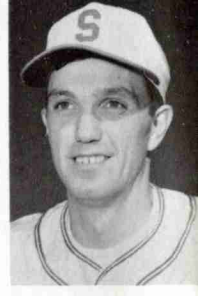
Cordell



Edwards



Erb



Harris

MEET THE WOLFPACK

THE PITCHERS

GEORGE ALLEN—junior from Tar Heel.

On squad but saw no action in 1961 . . . if he conquers control problem could be good college pitcher . . . "sneaky fast . . ." likely starter . . . righthander.

JOHN BOUGHAN—junior from West Point, Va.

Will be starter, after only one inning of varsity pitching in 1961 . . . had good summer in semi-pro ball . . . pulp and paper technology major . . . righthander.

BOB CONNER—senior from Wilmington.

Only letterman on pitching staff . . . excellent control, walking but six men in 33 innings in 1961 . . . 3-1 record as junior, with ERA average of 1.90 . . . Wilmington Jr. College graduate . . . top pitcher on staff . . . pro prospect . . . righthander.

JOE COORS—sophomore from Golden, Colo.

Did not play freshman ball . . . lack of college experience could be a handicap . . . transfer from North Carolina where he played freshman soccer . . . applied math major . . . righthander.

DOUG HARRIS—junior from Oxford, N. C.

This Louisburg Jr. College graduate has an excellent curve ball and good control . . . counted on to be a starter . . . played two years at Louisburg . . . married . . . righthander.

BOB LEBENSON—sophomore from Queens, N. Y.

Up from 1961 freshman team where he won Wolflets only game in relief . . . one of two lefthanders on staff . . . fast, but wild . . . textile chemistry major.

FRANK MCGIRT—sophomore from Rowland.

Hard worker, but needs experience . . . was 0-2 on 1961 freshman team . . . played in East-West game while at Rowland High . . . nuclear engineering major . . . lefthander.

MIKE PELLEGRINO—sophomore from Harvard, Ill.

Pitched six innings as freshman and had 0-1 record . . . big and strong, but inexperience will be drawback . . . righthander.

THE CATCHERS

GEORGE HAYWORTH—junior from High Point.

Caught every inning as soph. . . hit well in first half of season, but tailed off to a .234 mark . . . good throwing arm and has fine catching abilities . . . two uncles were former major league catchers . . . has played semi-pro ball past two summers.

THE INFIELTERS

EVERETT BAKER—sophomore from Wadesboro, N. C.

Has good hands and is strong defensively . . . did not play freshman ball . . . proven hitter at Wadesboro High and in summer ball . . . will back up Edwards at shortstop . . . electrical engineering major.

JERRY CORDELL—junior from Raleigh, N. C.

Letter man at first base . . . drove in six runs while hitting .213 in 1961 . . . batting average and slugging expected to improve . . . only left-handed hitting regular . . . good fielder.

WAYNE EDWARDS—senior from Red Springs..

One of top infielders in ACC . . . good shortstop . . . hit .340 as soph. and .302 last year . . . drove in 12 runs in 1960 and 11 in 1961 . . . pro prospect . . . all-state at Red Springs H. S. . . . textiles major.

THOMAS HINES—junior from Raleigh.

Was regular on Wilmington J. C. team which won national Jr. College title last year . . . good infield utility man, as well as a replacement as catcher . . . was all-state American Legion player in 1958 . . . married.

RAY RUSSELL—junior from Roxboro.

Lettered as second baseman last spring and should be starter there this year . . . good fielder . . . batted .250 in 1961 . . . had good summer in semi-pro ball . . . textiles major.

VERNON STRICKLAND—senior from Oxford.

All-ACC infielder last year as first team utility player and second-team third baseman . . . his .371 batting average was second best in ACC . . . played both second and third last year . . . has good arm and coverage . . . will be at third in 1962 . . . hit .321 as soph. . . good pro prospect . . . soils major.

THE OUTFIELDERS

RON ERB—sophomore from Lansdale, Pa.

Hit .294 as freshman, playing infield, and led in RBI's (7) . . . good speed will enable Sorrell to use him as courtesy runner in ACC speed-up rule changes . . . will play in left-field . . . on basketball team at State . . . Legion all-star player in Pennsylvania.

JIMMY KIRKMAN—sophomore from Charlotte.

Saw limited action as freshman . . . strong arm, but hitting needs improvement . . . might sub some at first . . . played on state high school runnerup teams in '59 and '60 at West Mecklenburg . . . chemical engineering major.

WARREN LINEBERGER—sophomore from Stanley.

Led 1961 freshman team in hitting with .306 average . . . played second as freshman but will be moved to centerfield . . . has good range and arm . . . will be utility second baseman . . . good college prospect . . . electrical engineering major.

DON MONTGOMERY—junior from Albemarle.

Finished strong to hit .313 as soph left-fielder . . . spring football delayed baseball workouts again this year . . . should provide power as left-fielder again . . . second in RBI's (12) in '61 and had six extra-base hits . . . broke leg in Alabama football game last fall.

LES YOUNG—junior from Norwood.

Had 11 RBIs and drew 14 walks while hitting .229 as alternate right-fielder in 1961 . . . lettered . . . had 400-plus freshman batting average . . . football practice may slow start . . . furniture manufacturing major.

Hayworth

Hines

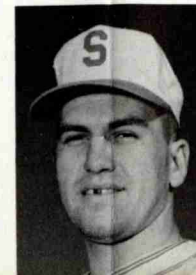
Lineberger

Montgomery

Russell

Strickland

Young



1962 Wolfpack Schedule

Mar.	20	Dartmouth	Raleigh
	21	Dartmouth	Raleigh
	23	Kent State	Raleigh
	24	Kent State	Raleigh
	27	Yale	Raleigh
April	6	Duke	Durham
	7	North Carolina	Raleigh
	11	Wake Forest	Winston-Salem
	14	Duke	Raleigh
	17	North Carolina	Chapel Hill
	20	Virginia	Raleigh
	21	Maryland	Raleigh
	24	Florida State	Raleigh
	27	South Carolina (2)	Raleigh
	28	Clemson	Raleigh
May	4	Virginia	Charlottesville, Va.
	5	Maryland	College Park, Md.
	12	Clemson	Clemson, S. C.
	16	Wake Forest(Night)	Raleigh
	17	North Carolina	Asheboro*

*Does not count in ACC standings.

HOME GAMETIMES

Weekdays:	3:00 P.M.
Saturdays:	2:30 P.M.
Nights:	8:00 P.M.

1962 Freshman Schedule

April	6	Duke	Raleigh
	7	North Carolina	Chapel Hill
	11	Wake Forest (2)	Raleigh
	14	Duke	Durham
	17	North Carolina	Raleigh
	26	Duke	Raleigh
May	3	Duke	Durham
	7	Louisburg Col. (N)	Raleigh
	9	North Carolina	Raleigh
	11	North Carolina	Chapel Hill
	14	Wilmington Jr. Col.(N)	Raleigh