

RELIGION . . .

at N. C. State College



*"Dedicated to the
Glory of God..."*

The Danforth Chapel

Dedicated on April 8, 1956, the new Danforth Chapel is the answer to a need long felt by many students. Strategically located on the campus in the South Wing of the Y.M.C.A. building, this place of private meditation and public worship was made possible by an initial gift from Mr. William H. Danforth and contributions from many other friends and graduates of State College. The Chapel seats 176 persons, is air-conditioned, and is equipped with a two manual Allen organ.

Twenty minute mid-week services are held in the Danforth Chapel each Wednesday at 12:40 p.m. under the direction of the denominational chaplains. Choirs from the fraternities, dormitory groups, and neighboring colleges provide the music on these occasions.

Open 24 hours a day, the Chapel is available at all times for private meditation. It is also used frequently by many organizations for initiation ceremonies, special observances, and other functions of a religious nature.

THE DANFORTH CHAPEL

DEDICATED TO
THE WORSHIP OF GOD
WITH THE PRAYER
THAT HERE
IN COMMUNION WITH THE HIGHEST
THOSE WHO ENTER
MAY ACQUIRE THE SPIRITUAL POWER

TO ASPIRE NOBLY

ADVENTURE DARINGLY

SERVE HUMBLLY



*From the
Chancellor*

In a technical college such as State, where specialization is emphasized, we are continually in danger of fragmentation in our academic training. Yet, a successful life is possible only as the whole man is educated and achieves maturity.

Therefore, it is important that into the campus life there be woven an ingredient which gives meaning to our study, relevance to our research, value to our education, and direction to our knowledge. Some call it faith, others call it religion, and still others call it a philosophy of life. However it may be identified, this principle is to life what oxygen is to the blood and chlorophyll to the plant.

Responsibility for keeping our campus sensitive to the ultimate values of life is the obligation of each of us. Specifically we look to our religious directors and chaplains to students to articulate the relevance of our Faith to our study. All of these men are clergymen. They are also college graduates with special training for ministering in the field of higher education. State College is proud to commend to you their services and programs as an indispensable factor in your pursuit of a thorough education.

Carey H. Bostian

*From the
Coordinator of
Religious Affairs*



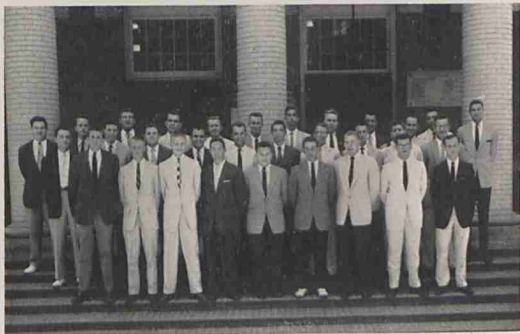
If God calls a student to be a scientist or an engineer or an agriculturalist when he graduates from college, He also calls him to seek a profound religious experience while he is in college. No student can declare a moratorium on religion for four years and expect to be adequately prepared to use the training he receives here at State to serve his fellowmen and his God.

A simple and easy way to deal with religion is to ignore it. But history bears out that such procedure will lead to the ethical, moral, and spiritual bankruptcy of an individual or a nation. Therefore, every student at State is encouraged to continue and deepen his religious life, and, if you will, transplant it in the college community as a vital part of his total development. Each faith and denomination has a local program in the hope that you will identify yourself with the church of your choice during these formative years.

The new Danforth Chapel, located in the South Wing of the YMCA building is made available to men of every faith for on-campus services and periods of private meditation. The YMCA is a student organization cutting across denominational lines in an effort to provide an opportunity for ecumenical encounter. Through the "Y" and the denominational groups working in a cooperative effort, every student has the unique privilege of maturing religiously as he grows academically.

Oscar B. Auldridge, Jr.

THE Y.M.C.A.



The Y.M.C.A. Cabinet is selected on the basis of Leadership Potential, Christian Awareness and Campus Service.

OFFICERS

President	Charles Law
Vice-President	Ralph Siewers
Secretary	William M. Turner
Treasurer	Richard Westmoreland

Purpose

In the fellowship of the Christian Church, we seek to understand the will of God through worship, study and action, and we strive to realize it both in personal living and in working toward a Christian society. We seek to lead students to faith in God through Jesus Christ; we seek to promote their growth in Christian faith, especially through the study of the Bible and prayer; and we seek to influence them to devote themselves in united effort with all Christians in making the will of Christ effective in human society and extending the Kingdom of God throughout the world.



The program of the Y.M.C.A. is basically an attempt to implement the foregoing statement of purpose for which this organization stands. For freshmen, this means helping them get acquainted with a new environment and their fellow students. It also means giving them the opportunity to participate and develop leadership in religious activities on campus. It means, too, that freshmen are confronted with the basic and vital truths of the Christian faith which they have opportunity to examine and discuss in informal dormitory meetings which are led by upperclass members of the "Y" Cabinet. Active membership in the "Y" includes those who subscribe to *The Purpose* and who pay the annual dues of five dollars.

The "Y" program for upperclassmen includes helping with the orientation of new students, providing leadership for freshmen forums, sponsoring campuswide meetings which confront students with the ideas and issues inherent in the total Christian life, participation in worship services, and attendance at intercollegiate conferences.

The "Y" building has facilities which are provided especially for its members but which are available to all students. These include a lounge for reading and relaxation, magazines and newspapers, conference rooms used regularly by a number of campus organizations including Hillel Foundation, The Newman Club, Blue Key, and fraternities. A game room, a TV lounge, and study accommodations are also provided.

Religious Workers at N. C. State College



Twelve chaplains are related to the campus religious life at State College. Six of this number give full time to work with students and faculty. Although each is responsible to his separate denominational body, all are committed to the successful operation of the over-all campus-wide program in the belief that the local denominational program is more effective when the total religious activity is strongest. Therefore, with complete freedom of conscience and conviction, these clergymen have joined together to minister to the needs of students and faculty at State. In this spirit a close personal relationship has developed among the college chaplains and several projects have been undertaken as a cooperative venture.

The Protestant Workers meet each Tuesday for lunch in the Y.M.C.A. building for fellowship and to share their problems and concerns. On special occasions dealing with administration policy and other related matters, this group is joined by the Catholic and Jewish chaplains. Religious preference cards for every student and a schedule of daily visitation in the infirmary is made available to all of the religious activities personnel by the office of the coordinator of religious affairs.

Baptist Student Union

2702 Hillsboro St.

Phone 2-1835

REV. ROBERTS C. LASATER - *Director*



The Baptist Student Union has a two-fold purpose: to minister to the college student on the campus and to serve as a link between him and the local church of his choice. In seeking to fulfill the first objective the BSU plans discussion groups on topics of religious interest, promotes social activities, conducts Bible study classes, organizes dormitory worship groups, exchanges programs with BSUs from other colleges, sponsors a student choir, and cooperates with the other religious organizations on the campus in joint projects.

In fulfilling its second objective, BSU works actively with all the Baptist churches in the city and seeks to represent the students in their relationship to the church.

The Baptist Student Union Center includes recreation and program facilities and is open at all times for the use of the students. The office of the full time director of the BSU is located in the Center.

OFFICERS

President	Joe Settle
Vice-President	Bob Bennett
Secretary	Fred Toney
Treasurer	Edgar Smith

B'nai B'rith Hillel Foundation

RABBI E. M. ROSENZWEIG - *Director*



Hillel is designed to provide the Jewish student, through study and discussion, with an adequate and accurate knowledge of Jewish life, by acquainting him with the faith and the culture of the Jewish people. It offers him opportunity to express his personality in activities aiming at the perpetuation and development of the Jewish heritage, and to lead him to glad identification through fellowship with other Jewish students.

Its program is many-fold encompassing religious, social, community service, and cultural activities. At N. C. State regular meetings are frequently held as Sunday brunches.

The chapter at N. C. State is directed by Rabbi E. M. Rosenzweig, who coordinates its activities with those of Hillel at Duke University, the University of North Carolina, and Woman's College at Greensboro. Joint functions are held periodically, and frequently include dances with the women from other Hillel units.

OFFICERS

President Richard Mark Schiff
Vice-President Herbert Anton Vitale
Secretary-Treasurer Norman G. Samet

Canterbury Club

(Episcopal)



The Canterbury Club is a student organization set up under the guidance of the Episcopal Church, although the membership is not limited to Episcopalians. The programing of the Club is based on the following principles: (1) worship of God (2) group fellowship (3) service to fellowman and (4) self-improvement by study. The Canterbury Club meetings are held each Sunday evening beginning with a service in Saint Mary's School Chapel at 5:30 p.m.

OFFICERS

President	Rooney Malcom
Vice-President	Anne Powell
Recording Secretary	Betty McCombs
Corresponding Secretary	Wilma Hair
Treasurer	John Burns

Disciples Student Fellowship

700 Hillsboro Street Phone 2-7112

REV. R. FREDERICK WEST - *Chaplain*



The "DSF" is the student organization for students of Disciples of Christ and Christian church background. The purposes of the DSF are fivefold: first, to guide students in developing a vital Christian faith and life; second, to inspire students to make known to others the way of Christ by all they say and do; third, to help students develop a Christian perspective of world-wide dimension; fourth, to help students understand community needs, and, on the basis of Christian convictions, work to meet these needs through personal influence and group action; fifth, to help students experience in all their relationships the bond of Christian fellowship which comes from their common faith.

Students from State College, Meredith, Peace, St. Mary's, and Rex Hospital are members of DSF. Meetings are held each Sunday evening at six o'clock in the fellowship hall of Hillyer Memorial Christian Church, which is on the corner of St. Mary's and Hillsboro Streets.

OFFICERS

President	Robert Kennell
Vice-President	Burt Worthington
Secretary	Kitty Lewis
Treasurer	Frances Penland

Evangelical and Reformed

814 Dixie Trail Phone 3-9136

REV. G. HAROLD MYERS - *Chaplain*



The United Student Fellowship of the Evangelical and Reformed Church seeks to provide means whereby as students you can deepen your Christian faith, have wholesome recreation and enjoy happy fellowship with others. Through the study of the basic Christian principles you may better evaluate the knowledge you gain, learn how to relate it to the society you will serve and build a personality that will enable you to live successfully and happily with others.

The First Evangelical and Reformed Church, a mission, has just completed its building at 814 Dixie Trail and has a special program for college students. A young adult class each Sunday at 9:45 a.m. studies the scriptures, followed by morning worship at 11:00 a.m. A Sunday evening program of recreation and discussion on pertinent Christian problems of grave concern to you will be of special importance. The pastor stands ready to counsel and aid you in every way possible as you progress through these important years of training.

State College Christian Fellowship

(A Chapter of Inter-varsity)



The State College Christian Fellowship is a group of Christians on campus who desire to tell others of Jesus Christ and his commandments, and to follow and worship him. On our program we have prayer meetings in the Y.M.C.A. Cabinet Room Monday through Friday at 12:10 p.m., Bible studies in the dormitories, and campus-wide meetings every second and fourth Friday night at 7:15. At these Friday night meetings we have singing, student led discussions, speakers, and films. Also regional conferences are held with near-by schools in the fall and spring. We are not a clique and have no written membership. We welcome all to visit us.

OFFICERS

President	John Frazier
Vice-President	George Shakarji
Secretary	Neil Beatty
Treasurer	William Barlage

Lutheran Student Association

622 Hillsboro Street Phone 9687
REV. RAYMOND BOST - *Pastor*



Fun, Fellowship, Knowledge, Inspiration — these are some of the things the letters LSA call to mind for Lutheran Alumni of American colleges and universities. As a fellowship of Lutheran students in the field of higher education, the Lutheran Student Association endeavors through a program of worship, study, recreation and service, to aid students in securing a deeper commitment to and understanding of the Christian faith and its relevance to the student world.

A Lutheran Student Center is now nearing completion at the corner of Brooks and Clark Avenues which will serve as a center for all LSA activities when completed. The Student Center will be a part of the plant of Holy Trinity Lutheran Church, whose pastor is advisor to the LSA and always available for counseling and consultation.

OFFICERS

President	Richard B. Davis
Vice-President	Vernon Schrum
Secretary	Patricia Oakey
Treasurer	Richard B. Park

Moravian Student Fellowship

3225 Darien Drive Phone 3-3840

REV. WALSER H. ALLEN, JR. - *Chaplain*



The Moravian Student Fellowship on the State College campus consists of the students who belong to the congregation of the Moravian Church. This means that most of the members come from the Piedmont section of North Carolina. During the past school year, an informal discussion and supper meeting was held each week at the college cafeteria. Students also participated in the regional and state-wide rallies of Moravian college students.

Students are cordially invited to attend worship services each Sunday morning in the Y.M.C.A. building.

PETER W. BLUM - *Student Representative*

The Newman Club

(Catholic)

15 N. McDowell St. Phone 2-6030

FATHER EDWARD CHAREST - *Chaplain*



The Newman Club encourages religious fervor among Catholic students on campus by promoting corporate religious activities; encourages thoughtful and intelligent understanding of the Faith through lectures and discussions on Catholic doctrine; provides students the advantage of having a Chaplain available to them for counsel and advice; and cooperates as a group in campus activities.

Activities of the Newman Club include an Annual Retreat; Communion Breakfasts; joint functions with Newman Clubs of Duke, Chapel Hill, and Womans College; a daily Rosary Group; and a program for helping children at the Catholic Orphanage.

The meetings are held the 2nd and 4th Wednesdays of the month at 9:00 p.m. in the Y.M.C.A.

OFFICERS

President	Vito A. Ciliberti
Vice-President	John Hattler
Treasurer	Arthur Weisser
Corresponding Secretary	John Fenney

United Church Student Fellowship

286 Hillsboro Street Phone 2-1119

REV. GAYLORD NOYCE - *Chaplain*



Congregational, Christian, and Friends students share jointly in this interdenominational group under the leadership of the Rev. Gaylord B. Noyce, their chaplain at State, and minister of the United Church in Raleigh (Congregational, Christian, Friends). Regular student activities include a breakfast seminar Sunday mornings, monthly fellowship meetings for Sunday supper, counselling, and projects of Christian service. Students from other colleges, and from other denominations such as Universalists also participate.

JERRY CULBRETH - *Student Chairman*

Wesley Foundation

2511 Clark Ave.

Phone 3-1861

REV. NEAL McGLAMERY - Director



The Wesley Foundation of Raleigh is the Methodist Student organization for State College, Peace College, Meredith College, Rex Nursing School, State Hospital Nursing School, and Saint Mary's Junior College. Its purpose is to provide a special ministry to students; to place in their hands the resources of faith that God may be a creative force in campus life.

Each Sunday students worship together for inspiration and strength, learn together the place of religion in life, and prepare and eat supper together that the fellowship may make a Christian community of the group.

The advisor and Chaplain of the organization is always available for consultation. Wesley Foundation is affiliated with Fairmont Methodist Church. All students are cordially invited to join in religious activities through Wesley Foundation and Fairmont Church while in school at State.

OFFICERS

President	Tilghman Poole
Vice-President	Cecil Brooks
Secretary	Mamie Alice Shutt
Treasurer	John Fortin

Westminster Fellowship

27 Horne Street

Phone 3-4300

REV. ROBERT HENDERSON - *Chaplain*



The Westminster Fellowship is the campus Christian organization for students sponsored by the Presbyterian Church. The purpose of the organization is to provide for students that study, worship and fellowship that will equip them to be witnesses to the redemptive work of Jesus Christ while yet in college and ultimately to be responsible members of the church when they are finished with their college career.

In all of its program and purpose the Westminster Fellowship is deeply evangelical. It is the one great desire of the organization to present to the campus at large a vigorous witness of the person and work of Jesus Christ. To this end the fellowship offers Westminster Fellowship Study Program which is an extracurricular self study plan covering the major fields of Christian thought; a program for overseas students; Biblical studies; and three weekend retreats are held each semester.

OFFICERS

President, Westminster CouncilJames Wallace
President, College Bible Class.....Susan Moss

Faculty Christian Fellowship

YMCA Building

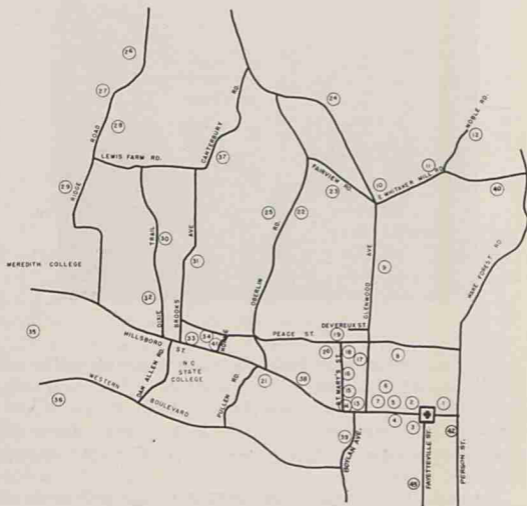
Phone 2-7184

DR. R. H. SNYDER - *Chairman*



The Faculty Christian Fellowship is a group of professors who meet each Thursday noon, during the school year, for an informal luncheon in the Faculty Club Room of the Y.M.C.A. The members of this Fellowship come from all denominations and from various stages of Christian experience and conviction.

Through these meetings the members have an excellent opportunity to share their Christian concerns, to discover ways by which the Gospel can be related to the teaching profession, and to explore the profound depths of religious thought. These sessions have been valuable, too, in that they have provided one hour during the week when busy faculty members can enjoy their fellowship as Christian laymen, united by similar vocations.



Key to Map Showing Location of Churches in Raleigh

- | | |
|-------------------------------------|--|
| 1. Christ Episcopal | 24. Mormon, Latter-Day Saints |
| 2. First Baptist | 25. St. Johns Baptist |
| 3. First Presbyterian | 26. Ridge Road Baptist |
| 4. Church of the Good Shepherd | 27. Highland Methodist |
| 5. Sacred Heart Cathedral | 28. Moravian |
| 6. Edenton Street Methodist | 29. Ridgewood Wesleyan Methodist |
| 7. Congregational-Christian-Friends | 30. Evangelical and Reformed |
| 8. Church of God | 31. Church of Christ |
| 9. Our Savior Lutheran | 32. Forest Hills Baptist |
| 10. Hayes Barton Baptist | 33. Baptist Student Union |
| 11. Westminster Presbyterian | 34. Wesley Foundation and Fairmont Methodist |
| 12. Emmanuel Baptist | 35. Westover Methodist |
| 13. Temple Beth-Or | 36. Western Boulevard Presbyterian |
| 14. Holy Trinity Lutheran | 37. St. Michael's Episcopal |
| 15. Hillyer Memorial Christian | 38. Christian Scientist |
| 16. Seventh Day Adventist | 39. Boylan Heights Baptist |
| 17. North Street Baptist | 40. Wesley Memorial Methodist |
| 18. St. Saviour's Episcopal | 41. Westminster Fellowship and West Raleigh Presbyterian |
| 19. Jenkins Memorial Methodist | 42. Tabernacle Baptist |
| 20. Synagogue Beth Meyer | 43. Calvary Baptist |
| 21. Pullen Memorial Baptist | |
| 22. White Memorial Presbyterian | |
| 23. Hayes Barton Methodist | |

Religious Workers at N. C. State College

	Telephone
Rev. Walser H. Allen, Jr. Moravian Student Fellowship 3225 Darien Drive	(Home) 3-3840
Rev. Raymond Bost Lutheran Student Fellowship 622 Hillsboro Street	(Home) 2-6610 2-9687
Father Edward Charest Newman Club 15 N. McDowell Street	2-6030
Rev. Robert Henderson Westminster Fellowship 27 Horne Street	(Home) 4-2631 3-4300
Rev. Roberts C. Lasater Baptist Student Union 2702 Hillsboro Street	(Home) 2-0850 2-1835
Rev. Neal McGlamery Wesley Foundation 2511 Clark Avenue	3-1861
Rev. G. Harold Myers Evangelical and Reformed 814 Dixie Trail	(Home) 3-9136
Rev. Gaylord Noyce Cong-Christian-Friends 286 Hillsboro Street	(Home) 4-6101 2-1119
Rev. Joseph A. Porter State College Y.M.C.A.	(Home) 4-7624 2-7184
Rabbi E. M. Rosenzweig Hillel Foundation 210 W. Cameron, Chapel Hill	(Home) 8-9168 8-7731
Rev. R. Frederick West Disciples Student Fellowship 700 Hillsboro Street	(Home) 4-2036 2-7112
Rev. Oscar B. Wooldridge, Jr. State College Y.M.C.A.	(Home) 4-1082 2-7184

NOTE: Prefix each telephone number with TE

NORTH CAROLINA STATE COLLEGE
DATA ON MINISTRY TO STUDENTS
RALEIGH, NORTH CAROLINA

THE CHRISTIAN FAITH AND TECHNOLOGICAL EDUCATION

Who will deny that scientific and technological disciplines are on the frontier of our modern culture. For better or worse we are in the grips of an age that is being fashioned by engineers, scientists and researchists of various types. It is in the matrix of scientific pursuits that our Presbyterian Church is seeking to bring the Christian faith with unique relevance. This presents a very difficult challenge for the church - but "our God is able"!

Campus Christian Life at North Carolina State involves three major groups of people. First there are the seven hundred or more Presbyterian students who are studying here, who come from churches large and small all across the state and even from our mission fields abroad. Then there are the large number of international students with their complex of misgivings, lives filled with disturbing incidents from home, and hearts lonely and dark, whom God would deliver into the glorious liberty of the sons of God. Add to these the one hundred and twenty-five Presbyterians who occupy influential positions as deans, department heads, professors, researchists, or extension personnel, and you have a God-given task that merits the best efforts of the Presbyterian Church.

Schools such as North Carolina State present peculiar problems in the Campus Christian Life' field. Agricultural and engineering curricula are ordinarily wrapped around a rather heavy schedule of laboratories which render a full schedule of mid-week Christian meetings impossible. Then too, both professors and students at such schools have academic demands made upon them almost inconceivable to those who are products of liberal arts curricula. Thus the ministry depends upon making openings and making every opportunity to confront folks with the fact of Jesus Christ count.

The time-worn controversy over science and religion is really not the besetting problem at State. Indeed, one might assert that the moral responsibility of Christians in the field of technology is very pertinent. But the great stronghold is still the problem of personal indifference to Jesus Christ. Thus, a relentless ministry of personal contact and careful selection of presented material is the method God has shown by which to confront this campus with the person of Jesus Christ.

God has richly blessed this ministry. Our Presbyterian faculty have been leaders in establishing at North Carolina State a large and interesting faculty Christian fellowship. More and more our Westminster Fellowship is becoming an indigenous student movement. There is an increasing unity of evangelical purpose being sensed between faculty and student groups. This year has shown some outstanding work in breaking through to the international students. But with all this there are increasing problems confronting us.

God has wonderfully answered prayer and blessed our work graciously. But a ministry of personal contact, visitation - dealing with individuals - is time-consuming and the weight of the people we never reach with any effective witness bears heavily upon us. We stand in need of increased Campus Christian Life staff here and at all our large universities. This is not to mention that we carry on a work at Meredith College also.

Another major problem confronting us is that we minister to a campus but we use the facilities of West Raleigh Presbyterian Church which adjoins the campus. What this means is that we are ministering to a group larger than the West Raleigh congregation in their facilities. Needless to say, it gets crowded. Soon the congregation of West Raleigh intends to remove the decrepit old temporary structure that has served their Sunday School and our Campus Christian Life ministry in order to erect a permanent educational building. It will hardly be possible for the congregation, with limited finances, to include in this new structure the space needed to house our College Bible Class, not to mention the space used for library, etc.

The challenge lies at the door of the Synod! May God give us grace to meet it.

Presbyterian Students:

North Carolina State College	720
Meredith College	<u>46</u>
Total	766

DATA ON MINISTRY TO STUDENTS
UNIVERSITY OF NORTH CAROLINA
CHAPEL HILL, N. C.

THE OPPORTUNITY:

- S
T
U
D
E
N
T
S
:
--to witness to Jesus Christ at one of the key academic centers in the nation; noted for its graduate schools in medicine, dentistry, nursing, public health, law, social work, and library science...for its Institute of Government, Institute of Latin American Studies, and Institute for Research in Social Science and University Press....for its pioneering work in educational television, in drama and in student government.
- to show our concern for and interest in the spiritual growth of the Presbyterian preference of students studying there, each year numbering 15% of the total enrollment (1027 out of 6971 in '56-'57).
- to provide a plant and ministry not only for the students, but for the children and families of the nearly 200 married Presbyterians enrolled in the University, and for the faculty and staff who live in Chapel Hill because of the University.
- to confront college age youth with the claims of the Christian Faith upon their lives, both in church and lay vocations--thus providing more men for the ministry and an increasing number of committed and articulate Christian laymen who will make up the leadership of the churches of the future.

THE OBSTACLES:

- N
O
F
A
C
I
L
I
T
E
S
:
--inadequate sanctuary space for Sunday worship.--The present Church sanctuary seats 424, but even with two services--at 9:45 and 11:00--the second service is often crowded and on the first Sundays of each semester, students are forced to sit in the aisles and vestibule on folding chairs. Approximately 3/4 of the persons attending are graduate or undergraduate students. At a time when students are often looking for reasons to miss church, the crowded and uncomfortable seating is one factor explaining the drop in church attendance during the school year and the loss of touch with hundreds of Presbyterian students.
- inadequate facilities for student work--The two student Bible classes meet at the Student Union building on the campus because no classroom space is available either in the Church or Annex ("Hut"). The Sunday evening Westminster Fellowship suppers are held in the Hut, a converted army barracks which is on University property across the street from the church. One end of this Hut serves as the student lounge, which is constantly in use for meetings and study during the week. The Minister to Students' Office occupies the converted furnace room at the other end of the Hut. On Sunday mornings, three church school classes (1st, 2nd, and 3rd grades) meet in the partitioned rooms of the Hut--and on Sunday evenings, these partitions are opened, the childrens' chairs stacked in the Minister to Students' Office, and the students take over these limited facilities. Approximately 80 can be comfortably served in the Hut, so that on the first two Sundays of this academic year, the 160 and 130 students who came were crowded and poorly served. Needless to say, many students who came have not returned and the average attendance is now 75 on Sunday evenings. The Hut is also used regularly by the Young Adults, cub scouts etc, Study groups meet on the campus or in the Minister to Students' home because no facilities are available in the Hut for such groups. Counseling is carried on under adverse conditions with constant interruptions.

--inadequate Church school facilities--The church proper has room for only 5 classes (3 in one room): the cradle roll, 2½, 3½, 4, and 5. Three other classes meet in the Hut and five more meet across Franklin Street on the University campus at the Alumni Building. Out of the average attendance of 155 - 160 children (not counting the Adult Class and student classes), approximately 130 come from homes of married students, faculty, or university staff--illustrating that the crowded conditions are the result of being a "university church."

--inadequate facilities for church life--The Sunday morning fellowship hour between services was cancelled this fall because no room was available for it. Monthly church family suppers are held on two successive nights or without the children in order to have enough space, chairs, and silver to serve the congregation. The Director of Christian Education has no office, but simply a desk in the corner of the church's largest room. The Women of the Church, the pioneer, Junior, and Senior Choirs, Girl Scouts, church committees, adult study groups and other church activities compete for the use of this same room on a regular basis.

THE ANSWER:

--to enlarge the present sanctuary to seat those who wish to worship in this Church.

--to acquire adjacent property and erect a student wing which will accommodate the kind of program which such a challenge demands, including a lounge, library, council room, fellowship hall, etc.

--to build a chapel seating approximately 100 to be used for weekday student vespers, Sunday evening student worship, and other smaller services of worship.

--to enlarge greatly the Christian education facilities of the church to provide adequate space for the instruction of children of all ages within one building.

--to provide adequate office and administrative space to enable the ministers to work effectively, counsel freely, and study without interruption.

THE ESTIMATED COST OF DOING THIS JOB IS \$400,000.00
THE ARCHITECT'S PLANS READY BY JANUARY 1957

THE RESPONSIBILITY:

The local Church is intensely concerned for the spiritual needs of these students. It has already pledged \$100,000 for this cause. The students themselves have pledged \$10,000. The General Assembly, through its Campus Christian Life division, has pledged \$15,000. And all of these have a responsibility for this ministry.

The Synod of North Carolina has the greatest responsibility, and in recognition of this fact, authorized the present campaign, which designates a large sum for the need at Chapel Hill.

If the people of the Synod fulfill this responsibility, we can begin construction next year. We must depend upon the Synod for this kind of support, and the situation is now critical. We send our desperate plea to all who are concerned for an adequate ministry at this University.

B
U
I
L
D
:

S
Y
N
O
D
:
W
I
D
E
:

THE WESTMINSTER FELLOWSHIP AT DUKE UNIVERSITY
1956-1957

There are about 650 undergraduates and 250 to 300 graduate students of Presbyterian preference, out of a total student body of approximately 5,000 at Duke University. The local Advisory Council has employed for the school year 1956-57 William R. Hoyt, as Director, and Isabel Rogers, as Co-Director of Presbyterian Campus Christian Life activities. (Miss Rogers and Mr. Hoyt are carrying a full load in graduate school and are employed on a part time basis.) The university is quite generous to the denominational groups and makes available to Westminster Fellowship facilities for carrying out its program. The Fellowship has the use of an attractive and comfortable building for its Sunday evening vespers, and of a room for the Sunday morning service which is too small, but the best place available. The group has a Supper Club every other Wednesday evening in a room provided by the East Campus Union. The Director shares a double office with two other chaplains. A good part of the mimeographing for two denominational groups, and part for a third is done in this office.

THE NEED OF THE WESTMINSTER FELLOWSHIP AT DUKE FOR A CENTER

What has been said makes it clear that the University has been sensitive to the needs of Westminster Fellowship and open-handed in providing for them out of its facilities. There are, however, a number of ways in which the work would be benefited by a well-equipped, attractive center. In the first place there are certain positive deficiencies in our program which might be remedied by having such a building. For instance, the director could have an office for personal counselling, which is almost impossible in the office he is sharing at present. Again, the group has no definite place for recreation, but such a place could be furnished in a center. Further, a spot could be found in a center for the Sunday School Class to sit around in an informal circle for discussion, which cannot be done in our present cramped quarters. Again, there is no definite place for the student council and committees to meet. A building would provide such a place.

In addition to the above mentioned deficiencies being overcome there are many ways in which the life of the fellowship could be enriched by having a building. There could be greater flexibility in scheduling meetings in a center because the building would be at the Fellowship's disposal. There would be more freedom in arranging and decorating the rooms than we now have. Further, meals and refreshments could be served with much greater ease and efficiency than is possible at present. In addition there could be definite spots for a bulletin board and for a Fellowship library.

Only a part of the more tangible ways that the Westminster Fellowship at Duke could be benefited by having a student center have been noticed. There are some intangibles too that are of importance. To mention only two, the existence of such a building would be a witness to the university for the Campus Christian Life ministry of the Presbyterian Church and the sense that the building belonged to them would form a tie between students and the Fellowship.

REPORT ON CAMPUS CHRISTIAN LIFE AT THE WOMAN'S COLLEGE OF THE
UNIVERSITY OF NORTH CAROLINA THROUGH THE CHURCH OF THE COVENANT
1956-1957

Campus Christian Life at the Woman's College is under the general supervision of a Local Campus Christian Life Committee, appointed by the Session of the Church of the Covenant. Miss Ellen Penn is Chairman. The committee is made up of representative faculty members, students, and members of the church. This Committee serves primarily as a policy forming committee, and acts as general advisor to the Director of Student Work. The committee meets regularly and upon the call of the Director as the need may arise.

Each year this committee sponsors a Presbyterian Faculty dinner, bringing together Presbyterian Faculty Members from all colleges and churches along with the new faculty members of all denominations. The primary purpose is that the faculty members may know one another as Presbyterians.

This committee has under discussion at the present time the whole matter of student quarters with a view to adequate facilities upon the completion of the Christian Higher Education Campaign.

This year there are 78 Presbyterian Faculty Members in the community.

The Westminster Fellowship Program and Activities are under the Student Westminster Fellowship Council, with Mrs. Coy T. Phillips, full time Director. Mrs. Phillips is in her second year.

The Council is made up of 22 members, who head the following committees:

OFFICERS

President -----	Nancy Garner
Recording Secretary -----	Carolyn Hendrix
Corresponding Secretary -----	Holly Deifell
Treasurer -----	Ann Lee Barnhart

CHAIRMEN

Christian Growth -----	Jacjie Long
Church School -----	Joanne Saleeby
Dormitory Chairman -----	Jessie Stanzel
Enlistment -----	Mary Snell
Fellowship -----	Marilyn Scott & Libba Sugg
Food -----	Doris Teeter & Bettie Hawes
Publications -----	Jane Cheek & Bennie R. Williams
Publicity -----	Posters--Kathy Dwight
	Locals--Mary Jane Hanna
Service -----	Barbara McDonald
Supper Club -----	Terry Anne Garrison
Worship -----	Patricia Brintnall
Vesper -----	Mary Sandra Schulken
Synod Representatives -----	Patricia Griffin & Kathy Dwight

The Council met early in September in a planning retreat to project the year's program. Throughout the school term the council meets every week for the purpose of specific plans.

This year there are 407 Presbyterian Students at the Woman's College, and 21 Presbyterian Students at Greensboro College.

The Friday Supper Club meets weekly at 5:30 p.m. for supper and a program. The average attendance has been around 50.

The College Church School Class shows growth over the past year with attendance averaging 30.

The Vesper Program has developed into something like a study group, being mostly student led on various topics of interest. The average attendance is small but lively.

A goodly number of students, difficult to estimate in numbers, attend both the 9:15 and 11:15 services of public worship.

The Women of the Church assisted council members in the Freshmen Visitation on campus and some have adopted College Daughters for the year.

For the first time the church is making a special effort to provide transportation to and from the church. While the church is only two blocks from the campus, this has been necessary because other churches were furnishing similar transportation.

The director frequently visits on the campus, and uses her home for personal conferences.

A weekly news sheet is being sent to all students through the campus mail facilities.

In seeking to evaluate the results of the year up to this date it appears that the student response is better than in previous years, and the statistical results show some growth.

RESUME ON STUDENT WORK AT EAST CAROLINA COLLEGE
1956-1957

Number of Presbyterian students 1947 - 80
Number of Presbyterian students 1956 - 283

For two years in that period there was a student worker and DCE paid jointly by the Greenville First Church and Synod's student work committee.

There has been no employed student worker for several years, but a good one in the person of Mrs. Leonard Topping, who does the student work out of great love, and on a thin margin of time in an already heavy schedule. The student work has put a heavy burden on the minister's home in the way of a great deal of extra cleaning, extra wear and tear on furniture, etc., and always with joy and gladness on the part of Mr. and Mrs. Topping have they carried this extra load.

TYPE OF PROGRAM BEING CARRIED ON

Weekly meeting on Monday night, averages 40 in attendance, meets in the home of Mr. and Mrs. Topping, which is near the campus. Ministers, educators, evangelists, professional men, missionaries, lay workers, and others speak at the meetings. Some programs are student planned and executed. Occasionally there is a 4 or 5 session Bible study.

Sunday School class on Sunday morning at Greenville First Church has as high attendance as 40, though the average attendance would not run that high. With no Saturday classes there is a heavy exodus on the week-ends.

Morning worship - student attendance usually very good.

Council - officers of the group meet twice monthly, with one of these meetings each quarter being an all Saturday morning session. A member of the council is allowed only 2 excused absences from the council. Mrs. Topping is available for conferences, counseling, advice, and often helps with questions and answers at the meetings. Mr. Topping stands ready to advise, lead discussion groups, etc.

Retreats - one in the fall for the council for planning, Bible study, recreation. One in spring for any member who would like to go for Bible study, inspiration, recreation. Both retreats are held at the Presbytery camp at Bogue Sound.

ACTIVITIES OF THE WESTMINSTER FELLOWSHIP

These activities have been tried and found useful and helpful, though not all of them are carried on all the time.

1. Helping in Sunday School and choir in Greenville First Church. One member has served as pianist at W. Greenville Church.
2. Three or four teach regularly at the Negro mission.
3. Sponsoring and financing an Easter egg hunt at the Negro mission.
4. Hobo day--students going from house to house to do house and yard work for 50¢ an hour. Money earned was used to make a gift to Barium Springs Orphanage.

5. Nursery cared for by students during a congregational supper at First Presbyterian so that the members could attend the supper.
6. Caroling for shut-ins at Christmas.
7. Occasional religious service at the jail.
8. Overseas clothing drive.
9. Visitation evangelism on the campus.
10. Clothes, food, gifts for needy family at Christmas.

SOME OF THE RESULTS OF WESTMINSTER FELLOWSHIP WORK

The ministry to the souls of men cannot be measured, so that it would be hard to list "results" of student work.

1. There have been several to join the Greenville First Church on profession of faith, and some have joined back home after having been a student at E.C.C.
2. Three out of the six presidents of the interdenominational religious council have been Presbyterians.
3. Presbyterian students make up a high percentage of the leaders in the Religious Emphasis Week at the college.
4. The college YW and YM draw on Presbyterians for their leadership.
5. A 1954 Seminary graduate was active in WF at East Carolina. A recent student has transferred to Presbyterian College to become a ministerial candidate. One student at Union Theological Seminary from East Carolina. Three students now at ECC are considering the ministry. One WF girl married a minister, now candidate for missionary service in Congo.
6. A decided effort is being made to help train students in good churchmanship-- interest in the church program as a whole, and in spiritual growth, ways of Bible study, stewardship, etc. The effort is made to make the entire program Christ centered and Church centered.

C
O
P
Y

July 14, 1956

Mr. J. W. Holder
Room 804
Commercial Building
Raleigh, North Carolina

Dear Bill:

The Y.M.C.A. is interested in obtaining a scholarship amounting to around \$1,000 a year to be awarded to that leader in the student body who has made the greatest contribution to the religious life of State College. Such a scholarship would be awarded by a competent committee selected from the faculty and students. It would be used specifically for an eight week summer European seminar and study tour sponsored by The National Student YMCA-YWCA.

Because of the need for a world perspective in our time, and an acquaintance with the human struggle going on in other countries, we feel that such a study tour would contribute as much to this person's thought and life as would a regular classroom semester in international affairs or world history.

It is our hope that the G.I.O.-A.F.L. will be sufficiently interested in this idea to make such an award possible as a memorial to one of its leaders whose devotion and service in the field of labor stemmed from a deep religious conviction. Such a scholarship should bear the name of this person. The fact that it is made possible by the G.I.O.-A.F.L. would also be publicised.

Scholarships and grants-in-aid to students are numerous at State College, but none have been made along the idea of this proposal. Also, management has made possible many gifts of considerable size, but our labor organizations have not taken advantage of this opportunity to contribute to the education of our students. The good public relations that would result in such a gesture are obvious.

Perhaps you will be kind enough to give this plan your earnest consideration. We are anxious to work with you toward the achievement of such a goal and trust that it may be received favorably by members of the executive board.

Cordially,

Oscar B. Wooldridge, Jr.

OEW:b

June 1, 1956

Dr. William Bentick-Smith
Harvard University
Cambridge, Massachusetts

Dear Dr. Bentick-Smith:

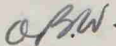
Our campus has been enriched by the recent visit of Dr. Dana L. Farnsworth and we are grateful to Harvard for making him available to us.

We took advantage of Dr. Farnsworth's presence here to inquire about the correct procedure for extending an invitation to Dr. Pusey to deliver our baccalaureate address here in May of 1957. His suggestion was that we make this known to you at the present time and write Dr. Pusey later in the year. We would appreciate knowing of Dr. Pusey's availability for such an occasion.

Also of interest to you will be the fact that our Chancellor, Dr. Carey H. Eastman, will be on your campus for two weeks next month attending the conference for college presidents. At this time I hope he will have the pleasure of meeting both you and Dr. Pusey.

Your consideration of this request will be deeply appreciated.

Sincerely yours,



Oscar B. Wooldridge, Jr.

OBW:b

C
O
P
Y

July 17, 1956

Rev. Robert Henderson
27 Horne Street
Raleigh, N. C.

Dear Bob:

This morning Dean Shirley and myself took under advisement your recent communication requesting office space in the 1911 Building on the campus. We can appreciate your desire for additional office space and are anxious to serve your need to the best of our ability, however, in accordance with the Administration's policy to make the Y.M.C.A. building the center of on-campus religious activities and programs, we are asking that you reconsider your request by designating a desire for space in the Y.M.C.A. building rather than in the 1911 building.

We believe that it is unwise to dissipate the energies of our religious leadership by scattered locations on the campus. Your presence in the Y.M.C.A. building would be beneficial to the college in our effort to strengthen the coordination of religious activities on the campus.

Cordially yours,



Oscar B. Wooldridge, Jr.

OBW:tb

Dictated 7/13/56

C
O
P
Y

May 30, 1956

Mr. George Kalenin
W. Colston Leigh, Inc.
521 Fifth Avenue
New York 17, N. Y.

Dear Mr. Kalenin:

In reply to your letter of May 22, concerning the possibility of having Mrs. Roosevelt visit our campus, we are deeply grateful for her interest and your assistance.

However, we feel that our responsibility should be directed primarily toward our students and not to the citizens of Raleigh. We find that visitors to the campus are most effective in small groups attended by those genuinely concerned, rather than in mass gatherings where little or no opportunity is provided to ask questions. Our usual schedule includes a visit in a political science class, a lunch with some of the faculty, and an appearance in a dormitory, fraternity house or The College Union. Such a program would not permit the sale of tickets necessary to provide an honorarium as you suggest.

Please know that we are grateful for this opportunity to share in her visit to Davidson College, and sincerely regret our inability to do so.

Sincerely yours,

Oscar B. Wooldridge, Jr.

OBW:b

C
O
P
Y

May 30, 1956

Dr. Ralph J. Bunche
Under Secretary
United Nations
New York, N. Y.

Dear Dr. Bunche:

We are sincerely grateful for your letter of May 22, and shall be most appreciative if it is possible for you to visit our campus during the early part of 1957.

When a person of your status visits this section of the country, we have two alternatives: a mass meeting open to the general public of Raleigh, or, several smaller meetings on the campus attended by those students and faculty who are genuinely concerned. We believe the latter plan contributes more to the education of our students, and herein lies our primary responsibility. Our usual schedule includes a visit in a political science class room, a lunch with some of the faculty, and an appearance in a dormitory, fraternity house or in The College Union. This provides an opportunity for students to ask questions and truly wrestle with some of the great issues facing us.

We shall attempt not to overtax your physical strength by following such a program on one day, but if your schedule will permit a longer visit, we will be honored. Wednesday is the most preferred day for this engagement, but any day convenient to you is possible with us.

We shall await with real anticipation the development of your speaking schedule in the hope that it will be possible to include State College in your itinerary.

Sincerely,

Oscar B. Wooldridge, Jr.

OBW:b

April 28, 1956

Mr. Oscar Wooldridge
YMCA, Campus

Dear Mr. Wooldridge:

As stated in my remarks at the dedication of the Danforth Chapel, it was a genuine pleasure to participate in such an exercise. It was a significant occasion, made possible by the enthusiasm and diligent work of many individuals, and providing genuine satisfaction to me.

It has been especially gratifying to see how you met the challenge of financing the higher costs of this project than they earlier had been thought to be. There is no doubt but that you were responsible for the very sizable donation which enabled us to complete the Chapel free of debt.

We are grateful to you for the leadership being shown in the entire program as well as in the completion of this project. I stand ready to help in any possible way as we continue to foster the religious education of our students.

Most sincerely yours,

Carey H. Bostian
Chancellor

CHB:H

NORTH CAROLINA STATE COLLEGE

BOX 5276, STATE COLLEGE STATION

Raleigh, N. C.

OFFICE OF
COORDINATOR OF RELIGIOUS AFFAIRS
AND
YOUNG MEN'S CHRISTIAN ASSOCIATION

April 23, 1956

Dr. Carey H. Bostian, Chancellor
Holladay Hall
Campus

Dear Dr. Bostian:

It must be monotonous to dedicate so many buildings in one short period of time; however, those of us over here want you to know how deeply we appreciate your participation in the dedication of our Danforth Chapel on April 8. It was a very meaningful experience and we are grateful for the part that you had to play in it as well as the time and effort it involved in your preparation. For this and for your many other indications of interest and concern, we are most appreciative.

Cordially yours,



Oscar B. Wooldridge, Jr.

OBW:b

NORTH CAROLINA STATE COLLEGE
BOX 5276, STATE COLLEGE STATION
Raleigh, N. C.

OFFICE OF
COORDINATOR OF RELIGIOUS AFFAIRS
AND
YOUNG MEN'S CHRISTIAN ASSOCIATION

April 5, 1956

To The More Than 500 Members of State College Y.M.C.A.

Dear Y Member:

The final banquet for all Y.M.C.A. members will be held on Wednesday evening, April 25. The speaker is the well known Francis Pickens Miller, politician and churchman from Charlottesville, Virginia, who ran for Governor in 1948 and was the unsuccessful candidate for the U. S. Senate against Harry F. Byrd. A great time is in store for us on this date, for Mr. Miller is a challenging speaker.

When you joined the Y, we promised that a part of your membership fee would entitle you to this free meal. All we ask you to do now is to inform us that you will be present so we can reserve the proper number of plates. Tickets are attached for those who have paid their full dues, and others may obtain tickets at the door for \$1.00 per plate.

The meal will be served to us and the entire west side of the Cafeteria has been reserved for this Y.M.C.A. banquet. The date is April 25. The time is 6 o'clock sharp. Please drop your reply card in the mail today.

Sincerely,

Oscar B. Wooldridge, Jr.

Oscar B. Wooldridge, Jr.

OEW:b

WHAT THE "Y" IS DOING AT STATE COLLEGE

- Sunday, March 11, 8 p.m. - Crusaders Chorus from Hampton, Va. in Pullen Hall, Charles Flax, Director
- Wednesday, March 14, 12:40 p.m. - and every Wednesday till Easter, twenty-minute Lenten Services in the Chapel in cooperation with denominational groups.
- Saturday, April 7-8 - State Student Ecumenical Conference - Dr. Waldo Beach, Duke Divinity School, speaker
- Sunday, April 8, 4 p.m. - Dedication of new Danforth Chapel, Chancellor Bostian, speaking
- Monday, April 9 thru Thursday, April 12 - Mrs. Ethel M. Nash speaking in YMCA at 7:00, and Tucker Social Room at 9:00 on "Love, Courtship and Marriage"
- Monday, April 9, 6:00 p.m. - Over one hundred expected at Leadership Banquet for student office candidates. Mark Etheridge, editor of The Raleigh Times, speaker
- Friday, April 13 - Sunday April 15 - State YMCA-YWCA Student Conference at Quaker Lake. Rev. Harry Smith, Chapel Hill, speaker.
- Tuesday, April 17 - Thursday, April 19, 12:00 noon - Luncheons for Faculty in Cafeteria. Dr. Gregg Singer of Belhaven College, Jackson, Miss., guest speaker.
- Wednesday, April 25, 6:00 p.m. - Final "Y" Membership Banquet, West side of Cafeteria, for all members - Mr. Francis Pickens Miller of Charlottesville, Va., speaker.
- Every Monday noon - YMCA Cabinet meets for lunch in Cafeteria
- Every Thursday night 6:00-7:15 - Bible Study Forum in Cafeteria
- Every Sunday 11:00 a.m. - Worship Services for Verville Residents
- - - - -

Place the above on your bureau mirror as a reminder.

Consult Y office for further information.

NORTH CAROLINA STATE COLLEGE
BOX 5276, STATE COLLEGE STATION
Raleigh, N. C.

OFFICE OF
COORDINATOR OF RELIGIOUS AFFAIRS
AND
YOUNG MEN'S CHRISTIAN ASSOCIATION

To: Members of State College Y.M.C.A.
From: O. B. Wooldridge, General Secretary

- (1) Mark the following dates on your calendar.
- (2) Call the "Y" office, 2-7184, or drop by to reserve a place for you at Dinner, 6 o'clock, Grill Room, Cafeteria, Monday nights. Only the first 96 persons can be accommodated, and we have 480 members. So, make reservations early.

January 9 - "Platform Issues of Political Parties in 1956"

Presidents of Young Democratic Club and Young Republican Club of North Carolina to speak. Problems dealing with agriculture, race, labor, taxes will be discussed.

January 16- "Japan As I Saw It"

Some of us will draw duty in Japan. Moving pictures and word description of Japan presented by Lynden O. Sikes, a State alumnus who has just returned from the Orient.

February 13- "A Labor Leader Speaks Off The Cuff"

The union of A.F.L. - C.I.O. is important. What lies in the future? Mr. John G. Ramsay, a labor leader of national reputation, will speak and answer questions from the floor.

February 20- "Integration in Education"

A Negro leader will present the other side of the integration problem.

All Y.M.C.A. members are invited to all of these programs, but we regret facilities in the Grill Room limit seating space to 96. Dinner will be served at 6 o'clock at the cost of 85¢. Doors will be closed at 6:15. We will allow one hour for the program and thirty minutes for questions. Some of the members have said, "In addition to a good meal served to us, we hear a speaker worth listening to talk on a timely subject."

All we ask is that you call 2-7184 or drop by the office to make your reservation. We must know how much food to prepare.

January 5, 1956

NORTH CAROLINA STATE COLLEGE
BOX 5276, STATE COLLEGE STATION
Raleigh, N. C.

OFFICE OF
COORDINATOR OF RELIGIOUS AFFAIRS
AND
YOUNG MEN'S CHRISTIAN ASSOCIATION

M E M O R A N D U M

To: All Members of the Board of Directors of the Y.M.C.A.
From: Oscar B. Wooldridge

It may be possible that your attention has not been called to the December 26th issue of The Raleigh Times, which released a story on the progress of the Chapel here on the campus including a picture of the outside of the new building. On the same page of The Raleigh Times in a column beside this article appeared the news of the death of Mr. W. H. Danforth. As a result of this announcement the following communication was released on December 26th:

"To the Family of Mr. William H. Danforth
835 South Eighth Street
St. Louis 2, Mo.

The students, faculty, and administration of North Carolina State College are deeply grieved by news of the death of Mr. William H. Danforth. We are debtors to his generosity, vision, inspiration, and dedication to the cause of Christ in higher education. Our Danforth Chapel and graduate students' scholarship program are lasting memorials to the valuable witness he has made on this campus. We offer prayers of thanksgiving but our hearts are sorrowful at the loss of a friend close to many student generations.

(Signed) Oscar B. Wooldridge, Jr.
Coordinator of Religious Affairs
N. C. State College
Raleigh, North Carolina"

Each of us will be very much disappointed at this news because we had looked forward with real anticipation to the privilege of having Mr. Danforth attend our dedication services of the Chapel.

It is my pleasure to inform the members of the Board that one of our recent contributions to the Chapel was a check for \$10,000 from an interested friend outside of the State. This amount brings our total income for the Chapel expenses to within \$2,000 of our goal. With this gift in hand we are proceeding as planned, and hope that the Chapel will

be completely finished by the end of this month except for the pews, which have been donated and which will arrive about February 26th. It appears that we should be able to have our dedication service during the week of March 5th, which will give us ample time to have a complete building totally paid for. It is believed that additional gifts will be coming in from week to week which will help us to meet this necessary amount of \$2,000.

Members of the Board are asked to reserve the date of Tuesday evening, January 17th, for our Board meeting for this month at 5 p.m. in the College Cafeteria. As usual, we will meet at the Chapel preceding this time in order to view its progress and retire to the Cafeteria for our meeting and supper. The date has been changed in order to permit Mr. Wheeler and Mr. Lewis to attend this particular meeting in view of their usual commitment to attend the City Council meetings on our regular meeting date.

January 4, 1956

December 21, 1955

Rev. John W. Drake, Jr.
Box 5233, Ardmore Station
Winston-Salem, North Carolina

Dear Mr. Drake:

As the Coordinator of Religious Affairs at State College, it is my pleasure to write to you as Chairman of the Department of College Work for the Episcopal Church in this area.

We are deeply concerned about the loss of the Rev. John Wooley from our fellowship of Protestant ministers to students and would wish to express our desire to be of every possible service to you and to Bishop Penick in securing a successor who will continue the excellent contribution of the Episcopal Church to State College. Our records reveal that 222 students have indicated membership in your denomination, and many of this number are affiliated with The Canterbury Club which meets weekly at Christ Church. However, there is a real need for an Episcopal student chaplain to visit in the dormitories, in the Infirmary, and to participate in the Protestant Workers Council. In this way the total religious life of the campus can be strengthened. Until a replacement for Mr. Wooley can be found we are closing ranks and sharing this added responsibility.

Should there be any way in which I may be of assistance to your selection committee, I trust you will feel free to call upon me.

With thanksgiving for your ministry to students this past year and praying God's blessing upon the continuation of your college program in 1956, I am

Cordially,

Oscar B. Wooldridge, Jr.

OBW:tb

c.c. Bishop E. A. Penick
Rev. Stephen C. Walke
Chancellor Carey H. Bostian