

# Technician

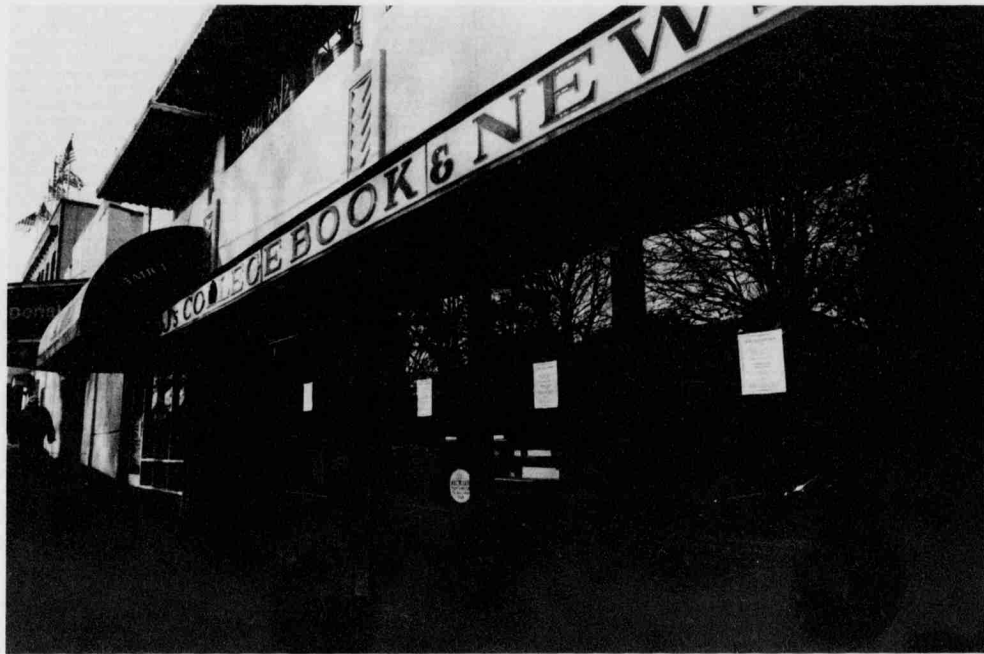
North Carolina State University's Newspaper Since 1920

Raleigh, North Carolina

World-Wide Web On-line Edition: [http://www2.ncsu.edu/ncsu/stud\\_pubs/Technician/](http://www2.ncsu.edu/ncsu/stud_pubs/Technician/)

Our 75th Year, Number 54

## Hillsborough Street businesses close up shop



DJ's College Book & News closed recently. Many students bought their newspapers, magazines and Cliff Notes at the Hillsborough Street store.

ANER BARRICOLA/STAFF

### DJ's, Electric Company Mall among those that shut down

■ The stores struggled with parking problems and increased competition.

By ELLIOTT FISHER  
STAFF WRITER

When Timothy Harrison hears about more Hillsborough Street businesses closing, he not only feels sorry for the

owners, he fears for his livelihood. As vice-president of the Hillsborough Street Merchants Association and co-owner of Brother's Pizza Palace, Harrison is worried about the health of the business district between Darryl's and Cup 'n Joe's. "When businesses such as DJ's, which has been here forever, and some of these other businesses close-up — it's a real big concern to us," he said. "I think we've hit bottom, but hopefully we're heading back

near the school. The problem reached a critical point last fall when NCSU, along with the merchant's association and the homeowner's association, hired parking experts to evaluate the situation. The consultants advised the merchants to create a fund for improving structures, lighting and parking. They also suggested

near the school. The problem reached a critical point last fall when NCSU, along with the merchant's association and the homeowner's association, hired parking experts to evaluate the situation. The consultants advised the merchants to create a fund for improving structures, lighting and parking. They also suggested

See MERCHANT, Page 2 ▶

### Homeowners also leave neighborhood

■ Residents are bothered by drunks returning to their cars from Hillsborough Street bars.

By ELLIOTT FISHER  
STAFF WRITER

Business owners aren't the only ones getting forced out of the Hillsborough Street area. Homeowners who live near the busy street are also leaving. For them, parking is only part of the problem.

Joe Sanders, associate vice-chancellor for university relations, said homeowners are justifiably concerned about an increase in bars on Hillsborough Street.

"If it is in the morning and six people are walking down the street screaming at the top of their lungs, people are going to wake up," Sanders said.

The number of bars and restaurants is increasing as they take the place of retail shops unable to survive off pedestrian traffic. Of the 130 businesses on the strip, 40 have ABC licenses.

The drunken behavior and excess traffic have caused some residents to sell their homes. Sanders said the university is involved because the health of the surrounding neighborhood and business district reflects on the university.

"If the neighborhood deteriorates into one largely of rooming houses, with people who are renting by the week and panhandling, you end up with an environment that increases the danger for students and makes the university less attractive for faculty, staff and students," Sanders said.

Homeowners recently teamed with Hillsborough Street merchants and NCSU to hire consultants who offered solutions to the parking problem. To help residents, the consultants recommended discontinuing non-resident parking in residential areas after 11 p.m. — a move that would likely cut down on late-night drunks walking through the neighborhood.

The consultants also suggested changing two-hour residential parking areas to one-hour parking.

### Local restaurant celebrates Bob Marley's 50th Birthday

■ The late Jamaican musician pioneered reggae's popularity in the U.S.

By JEAN LORSCHEDER  
STAFF WRITER

Saturday would have been Bob Marley's 50th birthday.

To pay honor to the late musician, a local restaurant will hold "Forever Bob Marley," an evening of music, food and films meant to celebrate and educate.

"He was the pioneer of reggae music worldwide," said Donovan Carless, one of the owners of the Rock 'n' Reggae Cafe, where the celebration will be held. "He

was a true Rastafarian." Rastafarianism influenced the way Marley lived and sang.

"Bob Marley was strictly vegetarian," Carless said. "And he did not believe in poisoning his body with cigarette smoke or alcohol."

Because the celebration on Saturday is intended to pay tribute to Marley, Carless said, only vegetarian dishes and a non-alcoholic drink are included in the ticket price.

Live music from a four-man reggae band, The Bottom Lion, will be featured at the event. The band will play original music as well as

See MARLEY, Page 2 ▶



Students speak with company representatives at CHASSnet.

KATHLEEN OEWLER/STAFF

### CHASSnet introduces students to employers

■ The annual festival provides CHASS students with a chance to network.

By EDITH THORNTON  
STAFF WRITER

Students in the College of Humanities and Social Sciences met with potential employers at Wednesday's CHASSnet and learned what they might be doing when they graduate.

"I came to CHASSnet hoping to find out about different opportunities, and I have a lot of options," said Larry Akles, a

sophomore majoring in English and Spanish.

Employers in 34 different fields attended the fair. Students received a sheet with the fields and employers' names on it, which directed them to the proper table.

Molly McNeil, of the telephone book publishing company University Directories, said students asked her questions relating to what the company does, the advertising field in general, positions available, qualifications needed and pay.

See CHASSnet, Page 2 ▶

### Students use library more than gym

■ Statistics reveal D.H. Hill is a higher priority — for the university and for students.

By JENNIFER SORBER  
STAFF WRITER

Did you know the library is open only one hour longer than the gym

each day? That might make you wonder: Are we here to study or work out?

But except for that hours thing, the answer is clear. In terms of money, employees and usage, students really do come to State to break open the books, not to bounce basketballs.

Even if you're shaking your head

in disbelief right now, the numbers don't lie. Here they are:

**Budget:** D.H. Hill Library spent almost \$12 million during the 1993-94 school year.

It breaks down like this: Four million dollars went to buy books; \$2.3 million went for things like supplies, repairs and furniture; and

\$5 million went to salaries. And the six libraries in the NCSU system even spent \$121,546 on binding books.

Carmichael Gym, by comparison, spent about \$2 million last year.

Here's where the money went: maintenance and improvements to

See LIBRARY, Page 2 ▶

Academics vs. Athletics		
Comparing expenditures and student use of		
	D.H. Hill Library	Carmichael Gym
Money spent during 1993-94	12 million	2 million
Number of times used during a week	39,954	25,000
Number of times used during 1993-94	1,757,979	800,000
Sources: D.H. Hill Library, NCSU physical education department		

#### Inside Friday

##### Basketball:

State takes good shots but misses most of them in losing to Wake Forest. Page 3 ▶

##### Football:

Coach Mike O' Cain lands one of his best recruiting classes ever. Page 3 ▶



**Basketball:** Todd Fuller blocked this Tim Duncan shot, but the Deacons still won 69-61. Page 3 ▶

#### How to Reach Us

Phone Numbers:  
Editorial.....515-2411  
Advertising.....515-2029  
Fax.....515-5133

Address  
323 Witherspoon Student Center  
Box 8608, NCSU Campus  
Raleigh, NC 27695-8608

Internet Services:  
Campus Forum:  
TechForum@NCSU.edu  
Press Releases:  
TechPress@NCSU.edu  
Information:  
techinfo@NCSU.edu  
News group:  
ncsu.publications.technician

Technician is printed on 60% recycled paper. Please recycle.



# Sports

Technician

February 3, 1995

## Deacons invite State to a wake

BY MICHAEL TODD  
STAFF WRITER

The N.C. State men's basketball team came into Wednesday night's game against No. 15 Wake Forest with a plan to get better looks at the basket.

It did. The problem was that the ball wouldn't go in.

"Our effort to get good shots was greater," said head coach Les Robinson. "We worked harder at getting good shots, and got better shots. But they weren't dropping."

When the shots are not falling, it spells defeat. And the Demon Deacons took advantage of State's poor shooting in beating the Wolfpack 69-61.

State shot just under 38 percent for the game, the 14th time this year that the Pack shot under 50 percent. State has lost eight of those games. In contrast, the Pack is undefeated when shooting over 50 percent from the field.

One source of State's shooting

woes is the team playing with a lack of confidence.

"A great deal of shooting is confidence," Robinson said. "We are dealing now with a confidence level that is somewhat low. We're not moving up and down the court with the confidence we were a month ago. And we've got to try to get that back."

From the beginning, State tried to work the ball around for the open shot and inside to center Todd Fuller. But Wake Forest had other ideas. The Deacon defense closed down the middle in the first half, allowing Fuller and Bryant Feggins only six points combined.

Wake's Randolph Childress, Tim Duncan, and Ricky Peral combined for all but three of Wake's first half points. Whenever the Pack got something going, one of them was there to make a big shot, quiet the crowd and maintain control for the Deacons.

At halftime, Wake Forest led 32-24. N.C. State is 0-8 when trailing at the half and 10-0 when leading.

See DEACONS, Page 5 >



Todd Fuller puts in two of his 16 points over the Demon Deacons' Tim Duncan.

STEV EGAN/STAFF

## Women take wild win from ODU

SPORTS STAFF REPORT

NORFOLK, Va. — N.C. State's women's basketball team built a big lead early and held off a late Old Dominion surge for a crucial nonconference 81-75 win.

After exchanging baskets and several turnovers with ODU (17-4) for the first 10 minutes, the Pack (12-6, 5-4 ACC) began to heat up. Ahead 18-14 with 9:48 left in the first, State made a quick 10-2 burst for some breathing room. Two minutes later a Jennifer Howard basket followed by a

Tammy Gibson three-pointer gave the Pack its biggest lead of the game, 33-18. The score at halftime was 38-25.

When State was able to get the ball down court — they turned the ball over 18 times in the first — they smoked the nets at a 62.5 percent clip. At the other end, the Lady Monarchs struggled, shooting just 36.4 percent.

Once again, for the first 10 minutes of the half both teams traded scores. It wasn't until the six-minute mark that ODU began to put anything together. Trailing 65-

See ODU, Page 5 >

## Football opts for size in recruiting class of '95

Coach Mike O'Cain said his team's late-season success helped some top players choose the Wolfpack.

BY KEITH JORDAN  
MANAGING EDITOR

N.C. State's football program is tired of looking up — literally — to opponents like Michigan and Florida State.

This year's lineman-loaded recruiting class should help fix the problem, coach Mike O'Cain said at a Thursday press conference. Ten of the 25 signees are 6-4 or taller.

"To say this is the best class we've brought in since I came here [in 1985] is hard to do," he said. "It's hard to compare classes that way. But it could well turn out to be the best group of linemen we've brought in."

O'Cain said his staff is putting

more emphasis on taller athletes because they are capable of a greater combination of size and speed. Shorter linemen must normally either weigh less or lose quickness, he said.

"We're not going to sign any more 6'1" linemen," he said. "Or rather, the only way we'll sign a 6'1" linemen is if he's a great, great player."

The incoming player who best represents the new emphasis is Todd Boyle, a 6'8" lineman from Staunton, Va. Boyle, who weighs 260 pounds, chose State over Florida and Virginia.

Boyle, O'Cain said, is an athletic and long-armed player who could make an instant impact. But the coach quickly squelched comparisons between Boyle and athletic, long-armed linemen Carl Reeves, saying the outgoing senior from Durham is much quicker.

See FOOTBALL, Page 5 >

## Morose Pack coping with no confidence

N.C. State didn't give the win to Wake Forest, but the end result was just as demoralizing as its six other conference losses.

BY TED NEWMAN  
ASSISTANT SPORTS EDITOR

Frustration, low confidence, boring, winning.

Which one of these words does not belong here? You guessed it, winning.

N.C. State's conference losing streak grew to four in a near-repeat performance of the Clemson loss. The only difference being that Wake Forest earned the win, it wasn't given to them.

"We're dealing now with a confidence level that is somewhat low," said head coach Les Robinson. "No doubt this stretch has hurt us, the games we've played

of late. We're not moving up and down the court with the confidence we had a month ago."

Displaying the patience and ball control that had helped them beat North Carolina and Duke, State methodically worked the ball around to find the open shot. Often they looked inside to Todd Fuller before taking an outside jump shot. But Fuller more than had his hands full with the Deacons' center Tim Duncan.

But unlike the previous games when that strategy worked, the open shots weren't falling for the Pack. They shot a miserable 35.7 percent from the floor in the first half. Keeping things in perspective, Wake's lead was only eight at intermission.

"We were frustrated with ourselves because we didn't run the offense near as well as we were

See PACK, Page 5 >

Free Valentine Radiograms!

For Faraway Sweethearts, Family and Friends  
-USA and Some Other Countries-  
Courtesy of NCSU's Student Amateur Radio Society  
Tel. 851-6861, email: jwprrice@unity.ncsu.edu

**Sperm Donors Wanted**

STUDENTS/GRADS 18-34 YEARS OLD,  
IN GOOD HEALTH. FOR INFORMATION  
CALL (919)781-0088 9AM - 4PM M-F

*VECCANO*

"Valentine Specials"  
A Exceptional  
& Hair Salon

833-6992  
122 1/2 Salisbury St.  
Downtown Raleigh

Manicures • \$10.00  
Airbrush Designs with Full Set • \$30.00  
Mini-Braids \$65.00 reg. \$85.00  
Regular Braids \$55.00 reg. \$75.00

*VECCANO*

North Carolina Center For Reproductive Medicine, P.A.

**EGG DONORS AND SURROGATES WANTED**

Special Need For Donors of Asian, Jewish, and Hispanic Descent.  
Please help our infertility couples. Will pay \$1,500 for completed donation.

FOR MORE INFORMATION CALL  
1-919-233-1680

NCCRM IN RALEIGH/CARY- 204 ASHVILLE AVE, SUITE 60

LP ROM, the wave of the future.

And Technician is riding the crest.

College Seniors/Recent Graduates:  
The Franklin is Hiring!

As a Franklin sales associate, you will determine your own personal earning potential, set your own hours, and work with people. Call for details and an appointment to explore a great career opportunity with one of the oldest, most respected insurance companies in America.

1100 Logger Ct., Suite C-103, Raleigh, NC 27609  
919-872-2411

The Franklin  
Life Insurance Company

**COST CUTTERS'**  
FAMILY HAIR CARE

We're your style:

233-0058 3223 Avent Ferry Road M-F 10-8  
Walk-Ins Avent Ferry Shopping Center Sat 9-6  
Welcome Near Food Lion Sun 12-5

**SPECIAL**  
\$8.95  
HAIRCUT  
reg. \$9.95

**Asthma Birth Control Flu**

**FLU STUDY:** Individuals 18 years and older with flu symptoms (fever, headache, body aches) needed for short research study. \$100 paid incentive and free doctors visit if qualified.

**ASTHMA:** Individuals needed ages 4 & up on daily medication for research studies. Up to \$320 paid incentive if qualified.

**BIRTH CONTROL PILL RESEARCH:** Healthy, sexually active women, between the ages of 18-50, are needed to participate in a birth control pill study for a 6 month period. Qualifying participants must be available for 6 clinic visits, which will include free investigational birth control pills and directly related physical and gynecological exams.

For more information call:  
CAROLINA CLINICAL RESEARCH • (919) 881-0309  
8:30 a.m. to 5:00 p.m. After hours please leave a message.

NOBODY DOES IT BETTER!

**SPRING HURRY!**

AS SEEN LAST APRIL ON CBS NEWS

**BREAKFAST**

DRIVE YOURSELF & SAVE!

COMPLETE FIVE & SEVEN NIGHT TRIPS

**ROAD TRIP!**

**\$58** 14TH SELLOUT YEAR!

as low as

**PARTY**

**SOUTH PADRE ISLAND**  
**PANAMA CITY BEACH**  
**DAYTONA BEACH**  
**KEY WEST**  
**STEAMBOAT**  
**VAIL/BEAVER CREEK**

\* PER PERSON DEPENDING ON DESTINATION / BREAK DATES / LENGTH OF STAY.

**1-800-SUNCHASE**  
TOLL FREE INFORMATION & RESERVATIONS

# Opinion

February 3, 1995

Technician

A paper that is entirely the product of the student body becomes at once the official organ through which the thoughts, the activity and in fact the very life of the campus are registered. College life without its journal is a blank.

Technician, vol. 1, no. 1, February 1, 1920

## Apology on paper not enough

**■ The N.C. State Music Department should answer publicly for its inappropriate use of state funds.**

The state auditor said in a report last week that he couldn't find boxes of music department account statements. Considering what he could find — clear-cut evidence of irresponsibility in the handling of music department funds — the disappearance of the boxes are a little too convenient.

In the report, the auditor said that on past occasions, when band members have gone to pick up meal allowances, no identification was required to obtain the allowances. Cash bonuses were given to some high-level employees without going through the proper channels and staff received larger meal allowances than students. And — surprise, surprise — some of the allowances are still unaccounted for.

It's time for the music department to explain, publicly and explicitly, for this mismanagement.

The auditor's report has now made the music department an official embarrassment. The report included elementary recommendations such as: tighter controls on the distribution of money for meals and bonuses and better control of financial records.

The situation was at its worst when, following a trip the band made to a Tampa Bay Buccaneers football game, there were apparently members who

signed for a meal allowance but didn't even take the trip.

This is a university department on a major campus. Who the heck is running it. Larry, Moe and Curly?

The damage the auditor assessed from the music department's carelessness was \$13,336. This includes a \$300 bonus to band director Doug Overmier, for unspecified reasons. Another \$166 of questionable meal allowances was also included.

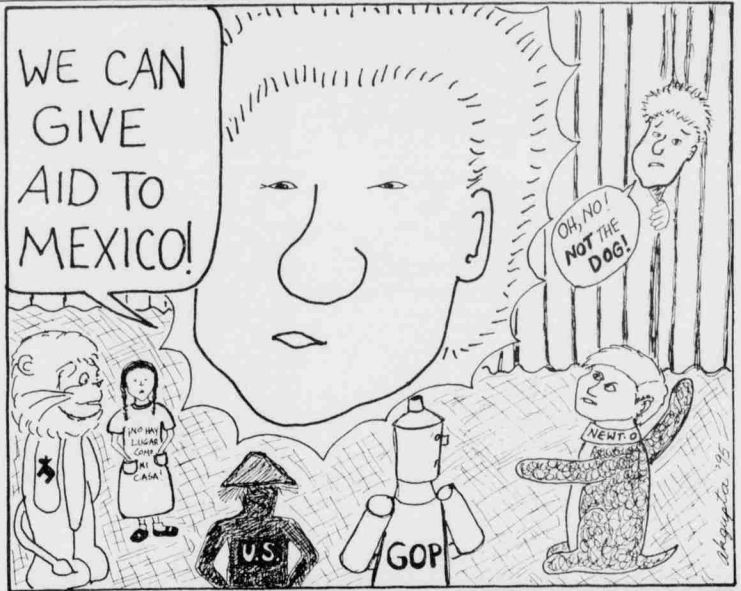
One could deduce that someone has been living "high on the hog."

The amount of \$13,336 is not a drop in the bucket. This money should have gone for something productive. The students of this university deserve for their tuition money to be managed in a professional manner.

To his credit, Ron Toering, director of the music department, said the investigation was comprehensive. He's prepared a statement that can be picked up at his office.

While a step in the right direction, this is just not good enough.

Let's get this whole thing aired out, in public, in an official manner, not on a piece of paper. Let's hear what finance and business Vice-Chancellor Worsley will do to "take appropriate action to ensure that the music department's financial records are appropriately maintained and stored." And let's hear about decisive, specific actions that will be taken in the future to avoid any repeat performances.



## Commentary

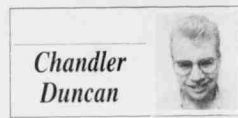
### Clinton wage hike is bad for students

President Clinton's proposal to increase the minimum wage may sound like a good idea if you're working a part-time job for raise. But increasing the minimum wage could well put many at N.C. State out of a job, making everything more expensive when we graduate.

Many, if not most part-time jobs held by college students pay less than \$5.00 per hour. For example, the community assistants in the residence halls make \$4.75 an hour. Basic student catering positions within University Dining and the Student Center also pay \$5.00 or less per hour. Private companies like fast food restaurants, grocery stores and gas stations, which often hire young students on a part-time basis, also pay \$5.00 or less per hour. Most of these employers could see cutting back on students hired as a way of escaping some of the bite from increased labor costs under an increased minimum wage.

While we would all like to make more money at our college jobs, we should look very critically at proposals to increase the minimum wage. Such a move will affect us more than most groups of Americans for a couple of reasons.

For one thing, after we graduate, most of us will be starting our careers in entry-level positions. We'll probably have to scrape and struggle for a few years just to



Chandler Duncan

make ends meet. What we pay for goods and services will be a very important component of determining our standard of living.

Secondly, while we are still in college, we hold most of the jobs that will be affected by a wage increase.

The president's political strategy in advocating a minimum wage increase is to reach out to lower and middle-class voters. Such a move is consistent with the president's working class values. It rewards those who work hard and provides an incentive for others to work harder. There's only one problem — reality.

Increasing the minimum wage will do two things. First, it will cause employers of low-income workers to scale back their payrolls in order to minimize the bite of increased labor costs. Second, it will make all of those goods and services which rely on low-wage labor a little bit more expensive. With the economy as strong as it is, it will be easy to overcome the first problem. Workers laid off due to the wage

increase will be able to find new jobs in the expanding economy. The real concern is the price issue. When an economy grows as fast as the Clinton economy has, and more people are working, earning and spending so much more than they did during the Bush recession, there's a risk of inflation.

Inflation is the key concern which most economists have about our current economic situation. The concern about inflation is so great the Federal Reserve Board has increased interest rates time and time again for the past year to try and nip the problem in the bud.

Increasing the minimum wage by almost 18 percent means that producers have to pay 18 percent more to do anything that involves low-wage workers.

This can range from making your hamburger at McDonald's, to bagging your groceries at the supermarket, to pumping your gas at Texaco. Some of that 18 percent is inevitably passed on to all of us as consumers in the form of higher prices.

The bottom line is if the wage is increased, fewer employers will want to hire us while we're in college and when we graduate, our own salaries will buy us less hamburgers or gasoline or whatever we want because more of every dollar we spend will go to labor costs.

## Keep pets with mom and pop

**■ Leaving Fido home when you come to college can be difficult, but bringing him with you is forbidden.**

Shocking, isn't it — Housing and Residence Life doesn't allow pets in the dorms.

Banned pets include turtles, iguanas, snakes, hamsters, cats and dogs. The pet policy prohibits any animal who cannot pass the underwater test. That is to say, the pet must be able to stay under water for five minutes and surface alive.

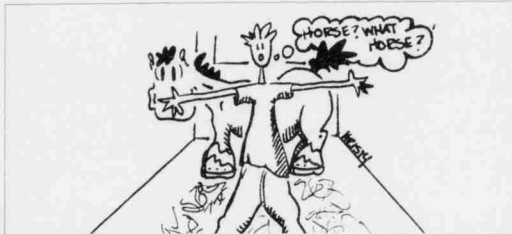
The main reason the university doesn't want pets in dorms is because of the fleas and other insects left behind.

HRL also doesn't want to deal with permanent pet odors. The Lysol bill could drive tuition through the roof. Any landlord will tell you that a very small of a pet sticks around a very long time.

When the rules are violated, everyone suffers. Just think of how awful your room would smell to the next person who lives there if you kept a pet.

Would you want your room to smell like hamster droppings? We didn't think so.

If you must have a pet, buy a goldfish. Buy a huge tank and keep a shark — we don't care. Just keep the four-legged, land-dwelling variety out of the dormitories.



## Technician

North Carolina State University's Newspaper Since 1920

EDITOR IN CHIEF  
Colin B. Boatwright  
Colin@ncsu.edu

MANAGING EDITOR  
J. Keith Jordan  
Keith\_Jordan@ncsu.edu

News Editor ..... Ron Batcho  
Editorial Page Editor ..... Josee Daoust  
Sports Editor ..... Owen S. Good  
et cetera Editor ..... Jean Lorscheider  
Photography Editor ..... Rod Garren  
Design Editor ..... Hunier Morris  
Graphics Editor ..... Danny Wilson  
WWW Administrator ..... Brian Watson

Business Manager ..... Robert Sadler  
Advertising Manager ..... Jennifer Zimmerman  
Classifieds Manager ..... Joy Stokes  
Ads Production Manager ..... Derick Satterfield  
Circulation Manager ..... Mike Jordan  
Archives Manager ..... Susan Russell  
Personnel Director ..... Denise Johnson

Opinions expressed in the columns, cartoons and letters that appear on Technician's pages are the views of the individual writers and cartoonists. The unsigned editorials that appear on the left side of the editorial page are the opinion of the paper and are the responsibility of the Editor in Chief. Technician (USPS 455-060) is the official student-run newspaper of N.C. State University and is published every Monday, Wednesday and Friday throughout the academic year from August through May except during holidays and examination periods. Copyright © 1995 by the Student Media Authority. All rights reserved. To receive permission for reproduction, please write the Editor in Chief, Mailing address is Box 8608, Raleigh, NC 27695-8608. Subscription cost is \$50 per year. Printed by Hinton Press, Mebane, NC. POSTMASTER: Send any address changes to Technician, Box 8608, Raleigh, NC 27695-8608.

## The truth is stranger than fiction

I appoint you to a jury. I order you to disregard everything you've heard about the trial. Disregard the tabloid-style media coverage and the defendant's celebrity status. Disregard the fact this is the most exciting and publicized courtroom drama since the Manson family. Forget the television cameras and your post-trial Donahue appearance. This is jury duty and you are to be unbiased — it is your job to have an open mind.

This is just another capital murder case. This is just another man who is accused of killing his ex-wife and her lover. If you find him guilty, the gas chamber could await him. You will make a life or death decision. And you'll be finished in record time, this first degree murder trial will only take about a minute and a half.

The prosecutor in this case is the best the district attorney's office has to offer, but her case is by no means air-tight. She has very little hard physical evidence — no murder weapon, no fingerprints and no witness to the crime. It is believed that the crime scene was not kept pristine for the forensic experts as per police department policy.

She cannot accurately tell you when the murder occurred — the coroner was not called for over eight hours and the pathologist did not perform an autopsy until over a day later. As fixed by the medical examiner, the time of death could have a three-hour range of error. The prosecutor wants you to use a barking dog to cement the time at which the murder occurred.

Her only physical evidence to tie the accused to the scene of the crime is some type of new-fangled deoxyribonucleic acid match which you may not really understand. But the defense produces five more experts in this field, each with a list of impressive university degrees a yard



Michael Bieseker

long, who tell you that the prosecution's scientist could be wrong.

I instruct you to remember you cannot find the defendant guilty if, after reviewing the facts of this case, a reasonable doubt of his guilt exists in your mind.

The smart lady prosecutor knows that her physical evidence is not strong. She knows she must overcome your reason and manipulate you with emotion, supposition and circumstantial evidence. She knows she must use whatever legal means she can to get this information admitted into the courtroom.

The prosecutor sends before you a parade of the victim's friends who testify that she said her husband was violent and had threatened her life on more than one occasion.

I tell you to disregard hearsay in this court of law.

The prosecutor sets before you the angry and weeping sisters of the victim. They testify that the accused is a violent and abusive man.

I tell you non-expert opinion is not admissible in this court of law.

Yet the smart lady prosecutor has one great big trump card left. She plays a sensational 911 tape. You hear the voice of the defendant cursing and raving in the victim's home. You hear the sound of breaking doors and furniture — but you never hear the accused strike his wife.

You hear the voice of the hysterical victim pleading for help from the dispatcher.

The convincing prosecutor tells you that the defendant was charged with battery for this incident and later pleaded no-contest to the accusation. She tells you that this tape, with the testimony of the prosecution's witnesses, shows "a pattern of abuse."

It seems reasonable for you to believe the defendant was a wife beater. I remind you that the defendant is on trial for first-degree murder — not for beating his wife.

The smart lady prosecutor shows you large, blown-up photographs of the bloody and horrific crime scene. She then asks you to make an assumption — that the accused is a violent man who not only beat his wife regularly, but on the night in question went a giant step further, taking a stiletto and slitting her throat to the bone.

The prosecutor tells you that he performed the same grisly surgery on a man that he had never met.

You are also to believe the defendant then calmly caught a flight to Chicago in less than an hour — presumably taking a shower and disposing of his bloodied clothing and murder weapon along the way.

I ask you for your verdict. Based on the facts of this case, is there a reasonable doubt of the defendant's guilt? Do you use your heart or your head?

Do you send this handsome and personable man to the gas chamber? You must serve justice. Do you kill him?

Your verdict please?

I release you from jury duty in my mock trial. Aren't you relieved — the truth is stranger than fiction.

# ODU

Continued from Page 3

53, at 12-4 run brought the Monarchs to within four at 69-65 with over two minutes left.

But Gibson and Howard combined to connect on 10 straight foul shots down the stretch to secure the victory.

State committed an astounding 32 turnovers, but that was offset by the team's 58.5 percent shooting for the game. Plus, the Pack benefited from 30 attempts from the charity stripe in the second stanza. They made 22.

Gibson led the Wolfpack in scoring with 19 points, highlighted by 10-10 shooting from the free throw line. Howard and Chasity Melvin both scored 16.

State's next opponent is No. 14 Duke in Reynolds at 12:00 p.m. on Sunday.

# Football

Continued from Page 3

The class features 16 players named to major all-America teams. Two of those hold high school state career interception records: Marcelle Hough of Belhune, SC by way of Fork Union Academy, and Tony Scott of Lawndale, NC.

Other marquee players include running back Quentin Neals of Aiken, S.C. and linebacker Darwin Walker of Wallerboro, S.C.

O' Cain said none of the recruits cited the Wolfpack's 28-24 New Year's Day Peach Bowl victory over Mississippi State as a reason for choosing State, but that he thought it was a factor for several.

"I was giving Quentin a routine visit Jan. 3 and he told me out of the blue that he wanted to come to N.C. State," O' Cain said. "I think the success we had was important to Quentin and several others in choosing their college."

Six of the recruits are now in prep school. Also, defensive back Eric

## 1994 Football Recruits

Name	Position	Home State
Jamie Barnette	QB	Roxboro
Todd Boyle	L	Stanton, Va.
Rusty Chappell	LB	St. Augustine, Fla.
Chris Coleman	WR	Shelby
Robbie Cotten	LB	Windsor, Va.
Jay Duke	K	Dulles, Va.
Patrick Dorn	LB	Vanceboro
Lloyd Harrison	B	Floral Park, N.Y.
Torry Holt	WR	Gilsumville
Marcelle Hough	B	Belhune, S.C.
Kevin Hubbard	B	Marshallville
Mike Hughes	LB	Eno, Pa.
Sheldon Kee	LB	Columbus, Ohio
Ryan Knauthan	L	West Chester, Ohio
Jeff Kuh	L	Chattanooga, Tenn.
Matt Laurino	L	Lynn, Mass.
Quentin Neal	B	Aiken, S.C.
Tim Ransauer	LB	Shelby
Eric Riddick	B	Richlands
John Rowles	L	Lourford, Va.
Alex Santos	L	Orlando, Fla.
Tony Scott	B	Lawndale
Devon Smith	TE	Ashlake
Darwin Walker	LB	Wallerboro, S.C.

Riddick of Richlands had to spend an extra year in high school to finish his diploma.

O' Cain said Riddick's problems shouldn't be held against the former

player. "As a freshman and sophomore, he never had any idea how good he was," O' Cain said. "He didn't see himself as a college athlete or a college student."

"I have a lot of respect for him. He has a goal and he's working hard toward it."

O' Cain defended his program's selection standards.

"We're more interested in a young man's character than in whether he's a great student," he said. "If they have the desire to graduate, they probably will graduate whether their SAT is 700 or 1200. By the same token, without that desire it won't be easy no matter how high the kid's test scores are."

O' Cain also said it's unfair to compare State's graduation rate with those at liberal arts colleges, which are generally higher. And State is improving in that respect, he said.

# Basketball Previews

Team	Records
N.C. State 10-8 (2-6 in the ACC)	N.C. State 12-7 (5-3 in the ACC)
North Carolina 17-1, 7-1	No. 14 Duke 16-3 (7-2)
Site: Smith Center, Chapel Hill	Site/Time: F.C. Claxton Coliseum, Sunday, noon
TV: Home 1 team Sports	TV: Home 1 team Sports
Time: Saturday, 8 p.m.	TV: Home 1 team Sports
WRAL-TV Ch. 5, WPTF-880	TV: Home 1 team Sports
The Skinny: Since the premiere of "The Pack is Back" that January night, the only form State has returned to is the underdog and in the ways of the past three years.	The Blue Devils are rising high this year, higher in fact than they have in over seven years. The last time Duke was ranked this high in the polls was in January of 1988. The ride ran over a slight speed bump on Wednesday in the form of Clemson. The Tigers dropped the Devils 78-64 at Clemson. But just one week prior, Duke stopped No. 3 North Carolina, riding a 32-game win streak, on a last second shot. The Pack is paced by three-time Rookie of the Week Chasity Melvin. She has scored to be more than a handful for even the best front lines in the ACC. She scored 21 against Duke in January.
Of course, some players aren't long on talk. After the loss to Wake Forest, Lakota McCuller — for the second straight game — botched the locker room before the media arrival.	Duke seems like it is the best equipped to handle Melvin. They start three on the front line that are all 6-3. Garey Kaufman, Tysh Hall, and Alison Day. But none are the power-type player that Melvin is. Offsetting Duke's strength under the basket has to be the Pack's perimeter shooting. Jennifer Howard leads the conference in both three's made per game and three-point percentage. Gibson appears to be snapping out of her slump of late. She had 19 in her last game. The Wolfpack lost the first matchup by 21 points in what Kay Yow called the team's best conference game since ever because she felt the team stopped trying. Don't expect that to happen again.
North Carolina, in the meantime, weathered the loss to the Wolfpack quite well and has climbed back into the No. 2 spot on the top 25 polls. At 7-1 the Tar Heels' only blemish is the Wolfpack's "corner-turning" victory.	— Owen S. Good
Only look to everyone except for Duke, and look bad in all of the losses. The Blue Devils may have an 88 record in the league, but no team in the conference has wasted more potential than the Wolfpack.	— Ted Newman

# Pack

Continued from Page 3

able of." Todd Fuller said, "We have the guys and the team to be good team in this conference, we're just not getting the job done."

The offense being run by State must have caught the eye of the Deacons because they were running the same style. Several passes on the perimeter, inside, then outside, then a shot. But their shots were falling.

The crowd grew quiet and the tension on the floor mounted. The usually raucous Reynolds crowd was in a state of stunned silence, not knowing whether to praise the team for playing so well or yell at the team for not scoring.

But still they ran the offense. The Wolfpack took only 12 three-pointers in the game. The same Wolfpack that averages 24 attempts per game. Giving the Wake defense some credit, they stepped way out to stop the outside shots.

"Because we shoot a lot of threes, I think we might have gotten carried for two or three games," Robinson said. "We got back to taking shots that were good and open. We missed a lot, but we missed a lot of two's too."

## Wake Forest (69)

fg	m-a	ft	r	a	pf	pts
Duncan	8-13	4-6	2-14	3	4	21
Childress	5-12	5-6	0-2	8	2	17
Braswell	5-8	0-0	0-1	10	13	13
Banks	1-5	0-0	0-1	4	2	2
Peral	5-6	1-1	1-4	0	11	11
Goodshy	0-0	0-0	0-0	0	0	0
LaFure	1-2	0-0	0-1	3	3	2
Jackson	0-0	0-0	0-0	0	0	0
Rutland	0-2	2-2	0-1	0	2	2
Totals	25-48	12-15	8-38	19	69	69

Three-point shooting: 7-15 (Braswell 3-5, Childress 2-4, Duncan 1-2, LaFure 1-2, Peral 0-1, Rutland 0-1).  
Blocked shots: 2 (Duncan 2).  
Turnovers: 20 (Childress 5, Banks 4, Duncan 3, Braswell 3, Peral 2, LaFure, Rutland).  
Steals: None.  
Attendance: 12,400  
Officials: Donnie Gray, Mike Wood, Andrew Pattiilo.

## N.C. State (61)

fg	m-a	ft	r	a	pf	pts
McCuller	3-9	0-0	0-0	2	5	9
Benjamin	1-5	2-2	2-4	4	1	12
Hyatt	1-3	0-0	0-1	3	2	2
Feggins	2-7	0-0	0-2	0	4	4
Fuller	7-16	2-2	7-11	0	2	16
Davis	0-1	2-2	0-2	1	2	2
Harrison	2-4	0-0	1-1	1	1	4
Wilson	3-5	0-0	0-0	0	3	6
Daniels	2-6	0-0	3-5	0	1	4
Totals	25-66	6-6	13-27	14	16	61

Three-point shooting: 5-13 (McCuller 3-5, Harrison 2-2, Benjamin 0-2, Fuller 0-1, Davis 0-1, Daniels 0-1).  
Blocked shots: None.  
Turnovers: 12 (Benjamin 4, Fuller 3, Daniels 2, McCuller, Hyatt, Wilson).  
Steals: 11 (Hyatt 3, Benjamin 2, Harrison 2, McCuller, Feggins, Wilson, Daniels).  
Attendance: 32,377 — 69  
N.C. State 24,377 — 61

# Deacons

Continued from Page 3

State opened the second half with a triangle-and-two defense to try to shut down Childress and Duncan. It worked. Duncan didn't score for the first eight minutes of the second half, while Childress was held scoreless until three minutes were left in the game.

But another Deacon stepped up to carry his team to the victory. Jerry Braswell, who was held scoreless in the first half, came out and nailed two three-pointers, and pushed Wake's lead to 14. Braswell scored Wake's first 13 points of the second half.

"We were able to take control in the beginning of the second half because Jerry Braswell hit shots," said Wake Forest head coach Dave Odom. "Had we not found Braswell, I can tell you that State's defense would have been very, very effective."

The Pack fought hard to keep the game within reach, but they could not get any closer than eight points

for most of the half. But State got a boost from reserve Marcus Wilson down ten with three minutes left.

Wilson hit two straight shots and played aggressive defense to give the Pack a chance. But the Deacons hit their free throws down the stretch to ensure the victory.

One bright spot for State was the return of Ricky Daniels. The senior forward was expected to be out four to six weeks after breaking his thumb against Maryland two weeks ago. But he returned early in the first half and played well in 15 minutes of action, scoring four points and collecting five rebounds.

"I thought for the first time back, he did a nice job," Robinson said. "He wasn't as sharp as he was when he left. We missed him a great deal."

"The Pack, now 10-8 and 2-6 in the ACC, needs to refocus for the second half of the conference schedule. State takes on North Carolina in Chapel Hill Saturday at 8 p.m."

"We're not in an enviable position," Robinson said. "It would be nice to be 5-3, but we're not and we've just got to regroup."

## It's your life. Make the most of it.

It's a given... your transcript tells employers what you know. BUT, how can you show them what you can do? The Leadership Development Series offers "real-world" training and will help you become successful in the field of your choice. You select the workshops that interest you and fit your busy schedule. Participation is low-cost for you, but big bucks for your future. It's our job to help you make a smooth transition into the career world. Make it your job to get involved.

**LEADERSHIP DEVELOPMENT SERIES**  
3114 University Student Center, NCSU  
919-515-2452

## HappY Ramadan!

(The Month of Fasting for Muslims)

# رمضان مبارك

THE MUSLIM STUDENT ASSOCIATION (MSA) AT NCSU would like to wish all a very special and fruitful MONTH OF RAMADAN!

To celebrate this holy month, MSA is organizing free Iftar (breaking the fast) dinners every Saturday.

CALDWELL HALL - FRONT PORCH @ 5:40 PM.

For more info, please contact Br. Jebreen Jebreen (859-2836) or Sr. Jessica Watson (783-6168)

Please come and discover this wonderful Muslim event.

# Athletic World

Inventory Clearance Sale  
10-40% off clothing  
Take 20% off any item with coupon thru 2-28-95

2223 Avent Ferry Road  
Mission Valley Shopping Center  
834-0721  
Hours: Mon-Fri 10am-8pm  
Sat 10am-6pm  
Sun 12pm-5pm

## This Spot

is seen by over 18,000 students, faculty, and staff every Monday, Wednesday, and Friday.

**Oriental rug store needs Full time/Part Time help.**

Assisting in selling, showing and lifting rugs. Other varied duties.

Call 790-8539

## FIGMENT & THE REST

featuring the CD "Common Ground"

SPONSORED BY THE DAB UNIVERSITY STUDENT CENTER

# INSTANT

NORTH & SOUTH GALLERIES  
2ND FLOOR, STUDENT CENTER  
FREE ADMISSION  
open to all NCSU students

## North Carolina State University

### Department of Public Safety & Housing & Residence Life

# It's Your Campus Help Protect It!

## Student Patrol Officers Needed

**SPO Dispatcher**  
**SPO Escort Officer**  
**SPO Afternoon Officer**

- Do you want experience in a law enforcement agency?
- Are you looking for an exciting job where you can set your own hours?
- Work with Public Safety in the Student Patrol!!!

This program is co-sponsored by the Department of Public Safety and Housing & Residence Life. Student Patrol Officers provide escorts during the hours of darkness, provide surveillance around bike racks and parking lots of recent larcenies and generally work as an extra set of eyes and ears for the police officers on patrol.

For an application, come by Public Safety between the hours of 8am - 5pm and see Ms. Lucie Ennis. She can be reached at 515-5878 or between the hours of 6-7 p.m. at 515-5967.

**It Is Up To You To Do Your Part**

February 3, 1995

# Classifieds

Technician

## How to reach us ...

If you would like to place a classified ad, please call us at 515-2029. Defined are:  
Display Ads 2 issue dates in advance @ noon  
Lead Items 1 issue date in advance @ noon

Display, or boxed ads, are sold by the column inch (CI). A (CI) is one column wide and one inch tall. Simply decide the size of your ad in column inches, and multiply the number of (CI) by the appropriate rate.

Line Item Rates are based on five (5) words per line regardless of length of word or abbreviation. Simply figure the number of lines in your ad, check the number of days you wish to run the ad, and use the chart at the right to calculate the price. All line items must be prepaid. No exceptions.

Line #	Day 1	Day 2	Day 3	Day 4	Day 5	Day 6	Day 7	Day 8	Day 9	Day 10	Day 11	Day 12	Day 13	Day 14	Day 15	Day 16	Day 17	Day 18	Day 19	Day 20	Day 21	Day 22	Day 23	Day 24	Day 25	Day 26	Day 27	Day 28	Day 29	Day 30																																																																																																																																																																																																																																																																																																																																																																																																																																																																																																																																																																																																																																																																																																																																																																																																																																																																		
Line 1	2.75	6.38	7.26	9.06	10.94	14.20	15.35	16.50	17.65	18.80	19.95	21.10	22.25	23.40	24.55	25.70	26.85	28.00	29.15	30.30	31.45	32.60	33.75	34.90	36.05	37.20	38.35	39.50	40.65	41.80	42.95	44.10	45.25	46.40	47.55	48.70	49.85	51.00	52.15	53.30	54.45	55.60	56.75	57.90	59.05	60.20	61.35	62.50	63.65	64.80	65.95	67.10	68.25	69.40	70.55	71.70	72.85	74.00	75.15	76.30	77.45	78.60	79.75	80.90	82.05	83.20	84.35	85.50	86.65	87.80	88.95	90.10	91.25	92.40	93.55	94.70	95.85	97.00	98.15	99.30	100.45	101.60	102.75	103.90	105.05	106.20	107.35	108.50	109.65	110.80	111.95	113.10	114.25	115.40	116.55	117.70	118.85	120.00	121.15	122.30	123.45	124.60	125.75	126.90	128.05	129.20	130.35	131.50	132.65	133.80	134.95	136.10	137.25	138.40	139.55	140.70	141.85	143.00	144.15	145.30	146.45	147.60	148.75	149.90	151.05	152.20	153.35	154.50	155.65	156.80	157.95	159.10	160.25	161.40	162.55	163.70	164.85	166.00	167.15	168.30	169.45	170.60	171.75	172.90	174.05	175.20	176.35	177.50	178.65	179.80	180.95	182.10	183.25	184.40	185.55	186.70	187.85	189.00	190.15	191.30	192.45	193.60	194.75	195.90	197.05	198.20	199.35	200.50	201.65	202.80	203.95	205.10	206.25	207.40	208.55	209.70	210.85	212.00	213.15	214.30	215.45	216.60	217.75	218.90	220.05	221.20	222.35	223.50	224.65	225.80	226.95	228.10	229.25	230.40	231.55	232.70	233.85	235.00	236.15	237.30	238.45	239.60	240.75	241.90	243.05	244.20	245.35	246.50	247.65	248.80	249.95	251.10	252.25	253.40	254.55	255.70	256.85	258.00	259.15	260.30	261.45	262.60	263.75	264.90	266.05	267.20	268.35	269.50	270.65	271.80	272.95	274.10	275.25	276.40	277.55	278.70	279.85	281.00	282.15	283.30	284.45	285.60	286.75	287.90	289.05	290.20	291.35	292.50	293.65	294.80	295.95	297.10	298.25	299.40	300.55	301.70	302.85	304.00	305.15	306.30	307.45	308.60	309.75	310.90	312.05	313.20	314.35	315.50	316.65	317.80	318.95	320.10	321.25	322.40	323.55	324.70	325.85	327.00	328.15	329.30	330.45	331.60	332.75	333.90	335.05	336.20	337.35	338.50	339.65	340.80	341.95	343.10	344.25	345.40	346.55	347.70	348.85	350.00	351.15	352.30	353.45	354.60	355.75	356.90	358.05	359.20	360.35	361.50	362.65	363.80	364.95	366.10	367.25	368.40	369.55	370.70	371.85	373.00	374.15	375.30	376.45	377.60	378.75	379.90	381.05	382.20	383.35	384.50	385.65	386.80	387.95	389.10	390.25	391.40	392.55	393.70	394.85	396.00	397.15	398.30	399.45	400.60	401.75	402.90	404.05	405.20	406.35	407.50	408.65	409.80	410.95	412.10	413.25	414.40	415.55	416.70	417.85	419.00	420.15	421.30	422.45	423.60	424.75	425.90	427.05	428.20	429.35	430.50	431.65	432.80	433.95	435.10	436.25	437.40	438.55	439.70	440.85	442.00	443.15	444.30	445.45	446.60	447.75	448.90	450.05	451.20	452.35	453.50	454.65	455.80	456.95	458.10	459.25	460.40	461.55	462.70	463.85	465.00	466.15	467.30	468.45	469.60	470.75	471.90	473.05	474.20	475.35	476.50	477.65	478.80	479.95	481.10	482.25	483.40	484.55	485.70	486.85	488.00	489.15	490.30	491.45	492.60	493.75	494.90	496.05	497.20	498.35	499.50	500.65	501.80	502.95	504.10	505.25	506.40	507.55	508.70	509.85	511.00	512.15	513.30	514.45	515.60	516.75	517.90	519.05	520.20	521.35	522.50	523.65	524.80	525.95	527.10	528.25	529.40	530.55	531.70	532.85	534.00	535.15	536.30	537.45	538.60	539.75	540.90	542.05	543.20	544.35	545.50	546.65	547.80	548.95	550.10	551.25	552.40	553.55	554.70	555.85	557.00	558.15	559.30	560.45	561.60	562.75	563.90	565.05	566.20	567.35	568.50	569.65	570.80	571.95	573.10	574.25	575.40	576.55	577.70	578.85	580.00	581.15	582.30	583.45	584.60	585.75	586.90	588.05	589.20	590.35	591.50	592.65	593.80	594.95	596.10	597.25	598.40	599.55	600.70	601.85	603.00	604.15	605.30	606.45	607.60	608.75	609.90	611.05	612.20	613.35	614.50	615.65	616.80	617.95	619.10	620.25	621.40	622.55	623.70	624.85	626.00	627.15	628.30	629.45	630.60	631.75	632.90	634.05	635.20	636.35	637.50	638.65	639.80	640.95	642.10	643.25	644.40	645.55	646.70	647.85	649.00	650.15	651.30	652.45	653.60	654.75	655.90	657.05	658.20	659.35	660.50	661.65	662.80	663.95	665.10	666.25	667.40	668.55	669.70	670.85	672.00	673.15	674.30	675.45	676.60	677.75	678.90	680.05	681.20	682.35	683.50	684.65	685.80	686.95	688.10	689.25	690.40	691.55	692.70	693.85	695.00	696.15	697.30	698.45	699.60	700.75	701.90	703.05	704.20	705.35	706.50	707.65	708.80	709.95	711.10	712.25	713.40	714.55	715.70	716.85	718.00	719.15	720.30	721.45	722.60	723.75	724.90	726.05	727.20	728.35	729.50	730.65	731.80	732.95	734.10	735.25	736.40	737.55	738.70	739.85	741.00	742.15	743.30	744.45	745.60	746.75	747.90	749.05	750.20	751.35	752.50	753.65	754.80	755.95	757.10	758.25	759.40	760.55	761.70	762.85	764.00	765.15	766.30	767.45	768.60	769.75	770.90	772.05	773.20	774.35	775.50	776.65	777.80	778.95	780.10	781.25	782.40	783.55	784.70	785.85	787.00	788.15	789.30	790.45	791.60	792.75	793.90	795.05	796.20	797.35	798.50	799.65	800.80	801.95	803.10	804.25	805.40	806.55	807.70	808.85	810.00	811.15	812.30	813.45	814.60	815.75	816.90	818.05	819.20	820.35	821.50	822.65	823.80	824.95	826.10	827.25	828.40	829.55	830.70	831.85	833.00	834.15	835.30	836.45	837.60	838.75	839.90	841.05	842.20	843.35	844.50	845.65	846.80	847.95	849.10	850.25	851.40	852.55	853.70	854.85	856.00	857.15	858.30	859.45	860.60	861.75	862.90	864.05	865.20	866.35	867.50	868.65	869.80	870.95	872.10	873.25	874.40	875.55	876.70	877.85	879.00	880.15	881.30	882.45	883.60	884.75	885.90	887.05	888.20	889.35	890.50	891.65	892.80	893.95	895.10	896.25	897.40	898.55	899.70	900.85	902.00	903.15	904.30	905.45	906.60	907.75	908.90	910.05	911.20	912.35	913.50	914.65	915.80	916.95	918.10	919.25	920.40	921.55	922.70	923.85	925.00	926.15	927.30	928.45	929.60	930.75	931.90	933.05	934.20	935.35	936.50	937.65	938.80	939.95	941.10	942.25	943.40	944.55	945.70	946.85	948.00	949.15	950.30	951.45	952.60	953.75	954.90	956.05	957.20	958.35	959.50	960.65	961.80	962.95	964.10	965.25	966.40	967.55	968.70	969.85	971.00	972.15	973.30	974.45	975.60	976.75	977.90	979.05	980.20	981.35	982.50	983.65	984.80	985.95	987.10	988.25	989.40	990.55	991.70	992.85	994.00	995.15	996.30	997.45	998.60	999.75	1000.90

## Policy Statement

While Technician is not to be held responsible for damages or loss due to fraudulent advertisements, we make every effort to prevent false or misleading advertising from appearing in our publication. If you find any ad questionable, please let us know as we wish to protect our readers from any possible inconvenience.

### Typing

Expert resume/cv letter/cover preparation since 1982. Writing, editing, printing. Free consultation. Rogers Word Service, 1304 Hillsborough St., #34-0000. Expert thesis preparation since 1982. Free consultation. Rogers Word Service, 1304 Hillsborough St., #34-0000. RESUMES, COVER LETTERS, WITNESSES, M.E.D. degree staff, laser typeset. One-day service. Resume (4-page Student Package) \$19.95 w/5 free copies & disk. \$14.95 w/cover. OFFICE SOLUTIONS, Mission Valley (near Kerr Drive), (847-7122).

### Help Wanted

**ELECTRICIAN HELPER:** Experience preferred but will consider training a mechanically inclined person with his neat appearance and learn quickly. Permanent Full-time. Birmingham Electrical Service (3 1/2 blocks from NCSU), Call 832-1388.

**EXCEPTIONAL SUMMER OPPORTUNITY:** Camp Wayne Boy/Girls, NE PA (3 hrs/NYC)-Sports. 1000-1000. Counselors/Specialists for all Land/Water sports, Camping, Climbing/Ropes, Mountain Biking, Computers, AEC, Video, Radio, On-Campus Interviews: TUESDAY, FEBRUARY 14. Please call 1-800-825-4747 or 516-883-3997.

**ATTENTION!** Ambitious, self motivated students. Manage your own business this summer. Earn money in excess of \$7000 as a College Tutor. We are currently recruiting on campus. **"Guaranteed \$2,000 minimum."** Call now 1-800-477-1001 for representatives.

Representatives wanted for North Carolina Summer '95 paid Internships. Call 781-9841 for more information.

**CUNY Programmer** wanted to provide software development firm. Flexible hours. Ask for Human Resources Department 223-1274.

**Seasonal and Full-time positions.** No experience necessary. For information call 1-206-634-0468 ext. 33594.

### Help Wanted

Attention College Students!! The Hampton Inn North Raleigh is now seeking college students to join our new professional. Hampton Inn is currently accepting applications for full and part-time front desk staff for day and evening shifts. Hampton Inn offers above average pay, quarterly bonuses, clean working environment, and most important, a 90% college tuition reimbursement program. \$7500.00 per year. Females only. Call (851-7173).

Moving to the Outer Banks of North Carolina this summer? For summer employment and housing information call Paul at 800-662-3122.

**Char-Grill** is now accepting applications. Flexible hours. Free meals. Uniforms provided. Call 781-2945 after 2:00 pm.

**Construction worker:** clean-up, gutter, haul materials, truck helpful. \$7.00 hour 10 hours per week 848-8047.

**O F F I C E ASSISTANT/RECEPTIONIST FOR ENGINEERING FIRM.** CALL IMMEDIATELY NEE 851-8000.

**Customer Service Representative.** Great hours for students. Several State students already enjoy working here. Call now ask for Bill 707-3070.

**LAW OFFICE RUNNER:** Fast-paced downtown Raleigh firm needs energetic, cooperative assistant for varied duties. Must have car and good driving record. Morning shift. Reply Personnel, P.O. Box 2350, Raleigh, NC 27602.