

# Technician

North Carolina State University's Student Newspaper Since 1920

Volume LV, Number 11

Friday, September 20, 1974



After one of those days when everything seems to go exactly wrong, a nice couple of hours in a place like this doing absolutely nothing would be so nice. . . Oh well. Have a nice day.

## Jessup, Kirks at odds over "misinformation"

Student Body President Ron Jessup has been accused of "misleading the student body" in statements he made to the Technician recently concerning the installation of washing machines on campus.

Susan Kirks, news director of WKNC-FM, made the charge in a commentary Wednesday. She pointed to a recent statement by Jessup to the effect that the University administration had been "very helpful in implementing the program" of installing washers in the dorms.

This, said Kirks, gave the impression that the idea was his own, and that because of his efforts machines are being installed in Tucker dorm this fall.

KIRKS POINTED OUT the Residence Facilities Division had been planning improvements, including the machines, for years, and that they would have been added without Jessup's help.

Kirks quoted Director of Residence Facilities Roger Fisher, who coordinated the project, as responding to Jessup's quote with, "I haven't done anything I haven't planned."

JESSUP RESPONDED to the charges in a letter to the editor of the Technician, saying that he has never claimed credit for

the changes. "This statement was made to inform the students that we are working together and sharing ideas concerning the program. It does not mean that we are responsible for the program itself," said Jessup.

Jessup also attacked the commentary, saying, "It bothers me greatly that the News Director of WKNC cannot be more precise in relaying information than the case seems to be, and in fact is."

Gerald Hawkins, assistant dean of Student Affairs, when contacted about the issue, said that the planning had been done mainly by the administration, but that Jessup had been helpful.

"THE WASHETERIA PROGRAM had been underway for years, long before Ron made it a part of his platform last year," said Hawkins. "Every year, there are priority programs for the improvements on campus, and one this year included the renovation of Tucker, rewiring it, and putting washing machines in the basement."

Hawkins added, however, that Jessup had probably speeded up the installation of the machines.

"Since he (Jessup) made them a priority, this made us take a look at the situation and possibly place the machines

at a higher priority than we had before," he commented. "Also, we have no plans currently for the addition of washing machines in other dorms. However, if he can show us, by means of a survey or whatever, that it is a big priority in the eyes of the students, we may start working on that as a project."

"If, for instance, the only space in a dorm was one currently in use as a lobby, and he showed us an indication that the students would be willing to give it up in order to have the machines, then we could start working seriously on that."

HAWKINS CONCLUDED, saying, "Ron didn't think of the ideas of washing machines in Tucker, but his interest in the project has made us place it on a higher priority than perhaps we would have. What difference does it really make whose idea it was, let's get it done."

Kirks, when asked for comment on the letter Jessup sent to the Technician, said, "My commentary was based on my knowledge of the situation from last year's elections, conversation with Roger Fisher, and Ron's direct comments concerning the program's progress. The only misinformation, in my opinion, has been to the students from Ron Jessup about exactly what is entailed in the program and Student Government's role in it."

## Fall election boasts large freshman vote

by Howard Barnett

Wednesday's fall student body elections brought an unusually large turnout of voters to the polls, according to student government officials.

"The number of votes was very good, especially for a fall election," commented Bob Taylor, student attorney general. "I'm really glad to see the amount of interest the freshman showed in the Judicial Board race."

THERE WERE a total of eleven freshman running for the two freshman positions on the board, with a total of 359 votes cast. Spencer A. Smith and Dale Wolfe, who campaigned as a team, got the most votes, polling 79 and 76 respectively. There will be a runoff for the two available seats between them and Jerry A. Kirk, with 54 votes, and Donna Jones, with 29. Other totals in the race were: Jim Hunnicutt, 19; Paula Collins, 18; Ann Clayton West, 18; Chip Gentry, 15; Dana Hall, 14; Sherman Redd, 14; and Howard Lowdermilk, 11. There were 12 write-in votes.

THE RACE pulling the greatest number of voters, however, was the contest for the 11 graduate student seats in the Student Senate, with a total of 557 votes distributed between the 13 candidates, including 18 write-ins.

The first nine of the seats went to Marge Crawley, with 49 votes, Janis Chessons, with 47; Faye Sawyer, 45; Stephen B. Black, 45; Scottie Troxler, 44; Chuck Kistler, 44; Bill Huff, 42; Meg

Wilkes, 42; and Verne Sisson, 40.

There will be a runoff for the remaining two seats between Thomas G. McCloud who polled 39 votes in this election, Edwin Foulke, Jr., with 38, and Charles Carmult with 37. Calvin Leggett received 27 votes.

IN THE RACE for the two graduate student positions on the Judicial Board, Steve Trexler won one seat, polling 36 votes. There will be a runoff for the other between Ernest Fleming, with 28, and John Doerr, with 25. Ray Freeman received 21 votes, and there were 9 write-ins.

There were two senate seats in the School of Ag and Life Sciences, and Dubby Evins, with 24 votes, Kent J. Plemmons, 24, and Susan W. Edwards, 22 will be in a runoff for them. Also in that race, Judy Simms received 10 votes and Donna Cosden 16. There were 5 write-ins.

There was a misprint on the ballot for Liberal Arts Freshman-senatorial seats, instructing students to circle one instead of three, but people running the polling places were instructed to mark it out and replace it with a "3".

TWO SEATS went to Paul Lowler and John Symons, with 27 and 21 votes respectively. There will be a runoff for the third between Mark Day, with 17 votes, and Kenny Poe, with 9. Steve Waters, with 9, Frank Johnson with 10. Frank White received 4 votes and Ed Fenner 7, with 3 write-in votes.

There was also a mistake on the Engineering ballot, telling students to

select one freshman instead of two. Ann Herlevich won, with 25 votes. A runoff will be held between Roy Daniel, with 11 votes, John Smith, with 14, Richard Pike, with 12. Bill Dison polled 10 votes.

In the School of Design race (freshman sophomore), Lu Ann Rogers, with 22 votes, won the single seat. Robert McCarter received 16, with three going to write-in candidates.

MIKE PALMER, Peter McManus, and Lee Mueller, with one vote each, will be in a runoff for the junior or senior post in the Design School.

Susan Avery won the freshman Forestry seat with 8 votes. Michael Gore polled 7 votes in that race.

The Textiles seat went to Becky Wagner, with 11 votes. Gary Gourley had 8, with 2 write-ins.

PAM PATSCH won the freshman education seat with 5 votes, and one write-in.

Donna Sayce won the PSAM seat, with 18 votes. Three people wrote in names. In addition, all three of the campus-wide referendums passed overwhelmingly.

On the question, "shall smoking be banned in classrooms while classes are being conducted," the vote was 341-129 in favor.

Similarly, students voted 336 to 51 to remove the Student Body President from the Student Senate, and 393 to 32 to make the student body attorney general a member of the executive council.

## APO, SAAC get space

by Michael Schenker

As a result of the move of the print shop from the old building on Dan Allen Drive to its new facility on Sullivan Drive, there is a new building to be made available for student use.

"The print shop has outgrown the old facility and there was real desire to combine all of the University Graphics under one roof. We were told by graphics that there was a lot of unneeded expense due to the running from one building to another," said John Poole, dean of Student Development.

MAJOR RECIPIENTS of the building will be the Society for Afro-American Culture (SAAC); two black fraternities, Alpha Phi Alpha, Nu Gamma Alpha; and one black sorority, Nu Gamma Mchumba. Poole stated, "These groups are not

actually being given the building on a permanent basis, but on a short time basis that will be constantly reviewed. They will be given the top floor of the building and will have to look after it."

Poole explained, "Their old location in the King Building was like a ghetto with all of the white students being afraid to go there because it was like a dungeon."

"I believe this is a way of introducing the black culture and society to the white people on campus." The final decision was made by Dean of Student Affairs Banks Talley, with the recommendation of many of the student leaders on campus.

RENOVATION OF the building will begin sometime this fall after a bid has been accepted. The price tag of the

renovation is to be about \$60,000, said Poole.

The decision as to how to divide the building and what to renovate was by a building liaison committee chaired by Dean Poole and including representatives from most of the involved organizations.

Other groups who may get space in the building include: A.P.O., the Outing Club, the Contact Football Club and the State Sentinel newspaper.

Money for this project will be coming from the General Assembly and not out of student fees.

Poole concluded, "The hope is that the utilization of this building will be a calling card for black students in the future to come to our campus."



This was one of the students who didn't get into today's interview column. His comments proved a little controversial for print at this time. However, watch for this fellow this spring around election time.

# TODAY

**WEATHER**  
Partly cloudy through Saturday. Chance of thunder showers this afternoon and tonight. High's today in mid 80's cooling to upper 70's Saturday. Lows tonight in the low 60's. Chance of precipitation 90 percent through Saturday. Winds from the south at 5 to 10 miles per hour.

### QUOTE

"Well, Raleigh is pretty good, but too quiet for me. . . but you have a pretty good football team to watch on Saturdays. . ."  
— Alberto Ricardo Quisumbing

### INSIDE

Brickyard . . . . . page 3  
Jazz . . . . . page 4  
Drs Bag . . . . . page 7  
Intramural Scene . . . . . page 8

# CAMPUS CARS: The Jensen Interceptor III



The Jensen Interceptor is a grand touring car in the truest sense. The car has generous power, roominess, and price [\$16,000].

By Phil Turnipseed and Reid Mance

We thought the sales manager at Goodman Sports Car Center was insane when he gave us the keys to the \$16,000 Jensen Interceptor III.

"Heavens," we thought, "What kind of nut would turn two State students loose in a touring car that has a 440 CID balanced and blue printed Chrysler engine?"

For those of you who don't know, balanced and blueprint means that the engine is equipped with special pistons, camshaft, and crankshaft. To put it more simply, everything in the car is matched and dyno-tested for the optimum in performance.

WE SLID into the luxurious hand-sewn leather seats and looked at the interior in awe. "Look at this," Turnipseed said. "It's got everything but a kitchen sink." A sink is optional, by the way. Along

with a stove, refrigerator, color TV, personal stud service, et cetera. In other words, an Interceptor is the kind of luxury touring car that can be custom ordered any way you could possibly imagine. You could even have a bar put into the back.

Of course the interior has generous headroom, legroom, footroom, and armroom. The interior can be ordered with lambs' wool or chamois instead of leather.

We drove the Interceptor out of the parking lot at Goodman and immediately found out why the car is named as it is. Punching it unleashes more power than a car is supposed to have. This car could intercept anything the driver took a mind to.

THE INTERCEPTOR reached 60 mph so quickly that we didn't have the chance to notice the speed. With that much acceleration one could destroy

the Pirelli GR70 by 15 tires in less than an hour.

The instrumentation on the Interceptor is mostly located to the driver's right. It is equipped with a tachometer and voltmeter, oil pressure and temperature gauges. There are warning lights for low fuel, handbrake, brake fluid level, oil pressure, and loose gas fill cover. Of course for \$16,000 you get a speedometer and the other instruments that are found on all cars.

The handling of the Interceptor was unbelievable for a touring type of car. The car was very stable in turns, even with the rear wheels jumping. The only special equipment in the suspension are stabilizer bars and rubber separators between the leaves of the rear springs.

Being students we will probably never own a Jensen Interceptor III, but it is a nice dream. You could see it in our eyes when we drove the car. Never has either of us had our respective lead feet on anything with so much power.

# WOODY HERMAN

## and his orchestra

Stewart Theatre — N.C. State University Student Center  
September 23 & 24, 8 p.m. call 737-3104

Bring This Coupon In To Our  
Dawson St. Warehouse For  
\$2.00 Off Waterbed Purchase-

**Emory Custom Waterbeds**  
455 S. Dawson St.  
834-9538

see  
Evel McTurnip  
at the  
grebe-nurd game

the **PIER**

Tonight And Saturday!  
THE AMAZING  
**JOSH WHITE JR.**  
A Veteran Of 1250 Concerts  
Blues At Its Best

Visit Us For Dinner 6-10  
In Raleigh's Village Subway

For Reservations: 834-0524

**THOMPSON THEATRE**  
A STUDIO PRODUCTION

•SEPTEMBER•  
Thursday 19  
Friday 20  
Saturday 21

**BRECHT**

FREE ADMISSION  
First come, first seated.

**N.C. Waterbeds**

303 Park Ave.  
833-2339

BEANBAGS • BEDSPREADS • TAPESTRIES  
PILLOWS • ACCESSORIES • FRAMES

Hillsborough St.  
Bell Tower  
Cox Ave.  
Park Ave.  
Pancake House

N.C. Waterbeds

Sept. 23-28  
**WORKSHOPPE**  
WITH  
**WILLIE TEE**  
Monday thru Saturday

**frog and nightgown**  
VILLAGE SUBWAY restaurant RES. 829-9799

**The Skillet**  
Restaurant

Open 24 hours a day  
Help Wanted part time  
or full time—all hours

## The Vickers Supersystem: \$7950

Marantz 3300 Preamplifier  
Marantz 500 Power Amplifier  
Marantz 120-B Tuner  
Two Klipschorn Loudspeakers  
Soundcraftmen 20-12 Equalizer  
Crown CX-824 Reel-to-Reel Deck  
Teac 450 Cassette Deck

DBX Model 119 Compressor-Expander  
Thorens TD-125 MK II Turntable  
SME Model 3009 Series II Tonearm  
Shure V-15 Type III Cartridge  
Jerrold QFM-9 FM Antenna with  
CDR Rotor, installed  
(Not Illustrated)

We don't expect to have a flock of customers waiting in line to buy our Supersystem. Frankly, there are few people who could afford it—and even fewer who would know how to use it. The Supersystem is strictly for the well-heeled audiophile who refuses to own anything short of perfection.

servicing available anywhere, from Vickers' professional audio technicians and the largest service facility between Atlanta and Washington, D.C.

Visit one of our three Triangle showrooms and find out what the Audio Renaissance is all about. It's happening now, at Vickers.

But—whether you spend \$300 or \$8,000—when you buy a stereo system from Vickers, you're getting the very best equipment available today. You can't find better equipment anywhere, at any price. And you're also assured of the very best

**Vickers**  
The Audio Renaissance  
506 E. Main Street, Durham  
426 E. Main Street, Carrboro  
North Hills Shopping Center, Raleigh

From the Composer of *Godspell*

Starring Barry Williams  
from TV's *Brady Bunch*  
—Winner of 5 tony awards—

A Musical Comedy

Broadway's Dazzling Musical Comedy Hit  
"One of the best musical stagings to be seen on Broadway in years"  
Clive Barnes, N.Y. Times

**STEWART THEATRE**  
Oct. 5&6, 3&8 PM  
NCSU Student Tickets \$4.00



# PEOPLE

## Grad student finds grass greener in horticulture

by Jean Jackson  
 "I guess I was Americanized when I was in the Philippines. I've been eating bacon and eggs since I was a kid."  
 Alberto Ricardo Quisumbing has been in the United States now for over six years, and he gives you the impression that he thinks of it as home. He left his family of eight brothers and sisters and his parents when he came here on a student visa.  
 Bert received his masters at Minnesota University in St. Paul and is now working on his thesis here at State. As Bert explained it, "I'm in horticulture working on cucumbers."  
 As a research assistant in the horticulture department, Bert tests cultivars (varieties) of cucumbers for their resistance to cucumber beetles.  
 "WE HAVE FOUND that if the seedling would be bitter to the taste it would be susceptible to the beetles. . . So what

I'm trying to do is find out which ones would be bitter," Bert explained.  
 In many instances, this testing process has included biting each seedling to determine bitterness. Bert laughed. "It's pretty silly, but I do that."  
 In addition to his work with beetles, Bert is also conducting studies on the pickleworm. As he put it, "It sure is pretty bad if you get a jar of pickles and find the worms." These studies are being conducted in Charleston, South Carolina, so Bert has to make occasional trips there for his research.  
**BEFORE BERT CAME** to the United States, he was employed by his father's newspaper. He wrote two columns on university activities and a police beat column.  
 "I'd go with the cops when they had raids," Bert said, "and I have some cops as pretty close buddies."  
 As for returning to the

Philippines, Bert seems sure that he will. At this point, he has a visa for as long as he is in school. He wants to stay in the United States for awhile and get some job experience and training. "Getting your education in the United States is not good enough. . . (because) it's same one Bert wrote for before he came to the United States."  
 "One effect of the marshall law, was that all newspapers and publications stopped. . . so my father's newspaper stopped," Bert explained. He said that when things returned to normal, the military commanders allowed the newspaper to resume publication under the condition that Bert's father and brother were no longer staff members.  
 "I think in a way marshall law helps a little—they're getting peace and order," Bert said. "But, there is lack of freedom and I take the news I get (from the Philippines) with a grain of salt."  
**WHEN ASKED** what he thought of State, in comparison to Minnesota or the Philippines Bert commented, "Well, Raleigh is pretty good but it's too quiet for me. . . but you have a

difficult to fit in now (in the Philippines)," he commented.  
 Bert explained the changes in the Philippines since he left six years ago. In 1972, marshall law was declared in his native country. At the time, his father was editor of a newspaper, the

pretty good football team to watch on Saturdays and the basketball team to watch in the winter."  
 Bert says he enjoys football games and has even predicted that the Vikings will win, "and that's not because I stayed there," he added. Although he is a sports enthusiast at State he admits that he misses the winters in Minnesota.  
 "I had an offer to go to LSU, but I went to Minnesota because I wanted to see some snow. . . compared to Minnesota, you don't have a winter," he commented.  
 Bert's wife, also from the Philippines, works in New York City and commutes home nearly every other weekend. As Bert said, concerning his interests, other than in his work, "Well, my every other weekend is occupied with my wife."



Bert Quisumbing is a Ph.D. candidate in horticulture.

*'...every other weekend is occupied with my wife.'*

### On the brickyard

## Students express opposition to parking ban

by Michael Schenker  
 The Raleigh City Council voted to ban parking on Hillsborough Street Monday. This came as a result of a recommendation sent to the City Council by the Parking and Traffic Sub-committee.  
 All those interviewed on the brickyard voiced opposition to the new decision.  
**MARVIN K. MOSS**, associate professor of physics, remarked, "I think it's going to be inconvenient, because if I go over to eat or go to the bookstore, when I'm not coming from campus I miss a nice place to park. I think they are catering to the automobile rather than to the individual."  
 Dr. Moss said, "I don't understand why they gave the car such a high priority. They should be more concerned with the people."  
 "This decision will hurt the businesses over there without a

doubt but also will hurt everybody who patronizes those businesses," Moss stated.  
 Moss concluded, "I heard that they were thinking about building a road over the railroad tracks but that's only a rumor. I don't think that is any solution."  
**CINDY OAKLEY**, a PAMS sophomore, also disagreed with the council's decision. "I think it's bad because we haven't got enough parking for all the students now," she said.  
 "We live here too, so why can't we use the streets?" Oakley retorted.  
 She commented, "I think the parking Sub-committee was wrong in making their recommendation. They should have at least questioned the students."  
 Oakley was very sure that this action was going to hurt the students, she said. "It's

going to hurt the selling of merchandise because when somebody sees the store they are going to want to go in and they won't be able to park and therefore won't go in. The result will be that fewer people will shop on Hillsborough St."  
 Oakley concluded, "This is not going to help anything. They should cut down some but not all together. There is still going to be a lot of noise on the street. It won't be nearly as safe with the increase in traffic."  
**MARK ALLISON Earnhardt** an electrical engineering sophomore, offered a humorous but somewhat serious comment to the situation. "It is going to cause more students to be run over, killed going to D. J.'s and to the restaurants."  
 "Seriously, I believe that cars will increase and safety will be cut down," he observed.

"I don't know why they would be going against the students like this. I really don't know why they did it," upheld Earnhardt.  
 He finished on a light note, "the people who are going to be hurt are those that are hit by the faster moving cars."  
**JANICE ARTIS**, a senior in textile technology, stated, "it doesn't really concern me because I never park my car over there. It doesn't really upset me that much."  
 "If students can find some other place to park they shouldn't care about it," Artis commented further.  
 "It's not fair they should have let it stay like it was," she concluded.  
**JIM RISLEY**, an economics senior, believed, "they should not remove the parking from the whole street. It would have been all right to remove it from the Hilton Inn down to the city."  
 "Of course it's probably needed since Raleigh doesn't have too many driving streets," Risley concluded.

He thought, "It's going to hurt the merchants alot especially the ones in front of the University. It will also hurt the students a lot because there just aren't that many parking spaces," Risley concluded.

not remove the parking from the whole street. It would have been all right to remove it from the Hilton Inn down to the city."  
 "Of course it's probably needed since Raleigh doesn't have too many driving streets," Risley concluded.

He thought, "It's going to hurt the merchants alot especially the ones in front of the University. It will also hurt the students a lot because there just aren't that many parking spaces," Risley concluded.



Janice Artis



Jim Risley



Dr. M. Moss



Cindy Oakley



Mark Earnhardt

### CAPITAL SEAFOOD

3625 Hillsboro St.  
 (Across From Meredith, Next To American Motors)

— All Fresh Seafood —  
 Student Special

Choice Of:

Fried Chicken	\$ 1.85
Hamburger Steak	
Fish	

With 2 Vegetables, Coffee Or Tea

Open 5-11 Tuesday — Saturday

### CHARLIE GOODNIGHT'S

ONYX  
 Thursday, Friday and Saturday Night  
 202 HARRISON  
 832-7021

Tues. & Wed. - 25¢ Draft  
 Thurs. - Ladies Free

VISIT RALEIGH'S ONLY AUTHENTIC  
 MEXICAN FOOD RESTAURANT

### TIPPY'S TACO HOUSE

2404 Wake Forest Road  
 828-0797  
 "We Back The Pack"

FULL LINE OF GROCERIES  
 OPEN 10:00 A.M. - 2:00 P.M.

### KEITH'S

Let us get to know you

## GROCERERIA

SELF SERVICE GASOLINE  
 5115 WESTERN BLVD  
 (2 Miles West of Campus)  
 Beer, Wine, Cheese, Tobacco

### TEMPLAR HAUS RESTAURANT

Featuring  
 the Finest in German Foods  
 Luncheon Specials From \$9.00  
 11:30—2:30

Enjoy Full Dinners 5:00—10:30  
 Reasonably Priced

For the Late Crowd 10PM to 2AM  
 Pitchers — \$2.00 & Snacks

Across From St. Mary's  
 1207 Hillsborough St.

Serving the Campus Community

### Walnut Room

Men's

4th Floor University Student Center  
 Monday thru Friday — 11:30 a.m. til 1:30 p.m.  
 Monday thru Thursday — 8:00 p.m. til 7:50 p.m.

Friday, September 20, 1974

Corned Beef and Cabbage	.95
Chicken Pot Pie	.80
Fried Perch	.85
*Baked Ravioli	.65
Home Fried Potatoes	.30
Green Beans	.25
Corn Cobette	.30
Buttered Broccoli	.30
Buttered Diced Carrots	.25
*Chef's Choice	

Chef's Choice: Designated entree, choice of one vegetable and drink only  
 Complimentary rolls and butter on tables  
 Take out orders available  
 Entrees and vegetables guaranteed available until 1:00 p.m. (lunch) or 7:00 p.m. (dinner).

WELCOME STUDENTS!

### NEW LARGE GOODWILL STORE

GOOD RECONDITIONED FURNITURE AND HOUSEWARES  
 — LARGE SELECTION AT BARGAIN PRICES —

REUPHOLSTERED FURNITURE	from \$14.00
Chairs	from \$9.00
Couches & Sofa Beds	from \$9.00
RECONDITIONED CLOTHING	from .50
Huge Selection for the Entire Family	Ready-to-wear
SHOES	Like New . . . . . from .49 pr.
BOOKS	Used . . . . . from .10
ELECTRICAL APPLIANCES & LAUNDS & KITCHENWARES	In Good Condition . . . . . \$1 to \$ 5.00
TELEVISIONS	from \$9.00
USED MATTRESSES	from \$4.00
NEW INNERSPRING MATTRESSES & BOXSPRINGS	from \$2.00 up
NEW POLYFOAM MATTRESSES & BOXSPRINGS	from \$2.00 up
NEW ADJUSTABLE BED FRAMES	11.00

220 S. BLOUNT STREET "PHONE 833-2889"  
 DELIVERY (Main Bus Stop Square Park) CONVENIENT PARKING  
 Bus Stop: 830 to 835 - Bus Stop: 835 to 840 - Bus Stop: 840 to 845

CELEBRATE THE  
 TAMING OF THE TIGERS  
 AT

## PIZZA HUT

3921 Western Blvd.  
 832-6330

# Woody Herman brings the Jazz Age to State

"He's a clean-cut-looking lad with a nice smile that should attract the dancers; he sings very nicely and plays a good clarinet, both attributes that command musical respect. . . . wrote a critic of a new big band leader in 1937.

Next Monday and Tuesday nights at 8 that "clean-cut-looking lad" will bring his big band to Stewart Theatre. Woody Herman and His Thundering Herd have been one of the most successful of the big bands for the last 30 years.

**THROUGHOUT HIS career,** Herman's clarinet playing has too often been taken for granted. He may not always

match the brilliance or the modernity of some of his band's other stars, and yet he has invariably managed to adapt to his style to whatever style his band might be playing.

He is a jazz musician, pure and simple. He plays a jazz that has never gone out of style because he has adapted the music of today to the sounds of jazz. He surrounds himself with young people, and has adapted their music to his driving form of jazz.

Herman's current band still makes the big, brass sound he was famous for when he was a headliner at the Paramount Theatre. There are five trum-

pets, a quartet of saxophones and Herman on the clarinet. **HIS ABILITY** to combine the new and the old makes him a driving force in the world of jazz. Today not only Swing Era jazz buffs but also the general public is becoming more and more aware of the big bands, as part of the nostalgia craze.

In 1966 Herman formed a new "Thundering Herd" and big band critic George T. Soman wrote: "he was fronting an entirely new Herd, composed completely of young unknowns, one so great that it received an ear-splitting rip-roaring standing ovation at the Newport Jazz Festival.

"To those of us who had followed Herman's Herds through their thirty years, including the 20 years since the end of the Big Band era, finding Woody still swinging so strongly was no shock.

"True, there had been shaky times when he had limited himself to just a small group, but we always had a hunch that soon he'd be fronting another one of his big, wildly swinging Herds—full of young, dedicated and appreciative musicians, following the inspiring direction of a man as young at heart and in mind as any one of the spirited kids he was leading."



The Herman Herd in Republic's Earl Carroll's Vanities (early 1945)

## crier

**MEDICAL TECHNOLOGY Club** will meet Monday night, Sept. 23 at 7:30 p.m. in 3533 Gardner Hall. The speaker will be Reba Tatum from Rex Hospital. Plans for the coming year will be discussed.

**VARSITY WOMEN** and men's fencing team tryouts and practice begins Monday (Sept. 23) at 4:30 in room 115 Carmichael Gym. Any interested persons, whether experienced or not urged to attend.

**STUDENTS ON THE waiting list** for residence hall rooms are reminded that they must inform the Department of Residence Life in Learner Hall of their local address and telephone number so that they may be contacted when space is available. Some are eligible for a room assignment now but cannot be located.

**NCSS INTERNATIONAL Folk Dance Club** will meet this Friday in the Student Union Ballroom at 7:45 p.m. Everybody is welcome. Free.

**SUPERVISED CLASSROOMS** in Harrington Hall are available for study from 7 p.m. to 11 p.m., Monday through Thursday. Students needing a quiet place to study are urged to use these facilities.

**APPLICATIONS FOR the Homecoming Queen Contest**, which is sponsored by APO, will be available at the Information Desk at the Student Union Sept. 23. Oct. 4 Applications shall also be delivered to all dorms and various organizations on campus.

**THE COFFEEHOUSE** will take place this evening at 8:30 in the W-100 Room of the Student Center. L. J. Abramowitz and Tom Leach will be performing blues and country folk music. Open jamming. Bring wine.

**WOMEN'S VOLLEYBALL** All women interested in participating on a women's interscholastic volleyball team, come to gymnasium Tues. and Thurs. 4-6 or contact Christ Saylor 851-0590 or Lynn Berle (Intramural office.)

**LIBRARY CARREL and locker renewals:** Carrels and lockers are assigned on a semester basis and must be renewed or officially cancelled before the first day of classes the following semester. The Library is extending this renewal and cancellation deadline for the fall semester until Sept. 20, 1974. Locker key deposits will be considered forfeit if book lockers are not renewed or officially cancelled by Sept. 20, 1974. A locker is officially cancelled by either 1) returning the key to the Circulation Processing staff, or 2) reporting a lost key to the Circulation Processing staff and stating that you do not wish to renew your locker. The Circulation Processing service window is adjacent to the main Circulation Desk in the Bookstack Tower Lobby. Service hours are 7:45 a.m. to 5 p.m., Monday through Friday. Telephone renewals will be accepted. Please call 737-3364 if there are any questions.

**ALL LIBERAL Arts seniors** should plan to attend the Placement Seminar given by the Career Planning & Placement Center for their department. Registration will take place at this time. The Center's services and facilities, current job market and tips on seeking a position will be discussed. Sociology 12:00 Wed., Sept. 18. 214 Daniels. Economics 3:00 Tues., Sept. 24. 101 Winston. History 4:00 Tues., Sept. 24. 141 Harrington. General Liberal Arts - those seniors unable to attend their department seminar, Modern Language & Philosophy & Religion are invited to attend Monday, Sept. 30. 163 Harrington - 4:00.

**ANIMAL SCIENCE CLUB** will meet Tuesday, Sept. 24, 7:00 p.m. in 110 Polk Hall. Githin ready for State Fair so ya'll come.

**AIAA picnic** Tuesday Sept. 24 at 6:00 p.m. between Poe Hall and Winston Hall (weather permitting). All freshmen and sophomore aerospace engineering students and dates invited.

**ATTN SENIORS SALS:** There will be a Placement meeting Monday, Sept. 23 at 5:00 p.m. in 251 Williams. Fall interview schedules will be distributed. There will be a make-up meeting Sept. 30 at 5:00 p.m. in 251 Williams.

**ATTN SECOND YEAR AG:** Institute students. There will be a placement meeting Tuesday, Sept. 24 at 5 p.m. in 251 Williams. Fall interview Schedules will be distributed. There will be a make-up meeting Oct. 1 at 5 p.m. in 251 Williams.

**AUTOCROSS - Sunday, Sept. 22, 1974** at the NCSU parking deck. Registration from 9:30 to noon. Timed runs start at noon. Entry fee is \$3 (Two dollars for students). Trophies will be awarded. Spectator parking and viewing areas are plentiful on the deck. Sponsored by N.C. State Sports Car Club & Balza Bros. Racing. For info call Lee 782-9550 or Jim 874-9374.

**UNION LECTURES BOARD.** Any one interested in serving on the union lectures board, please sign up in the Programs office by Friday, Sept. 21.

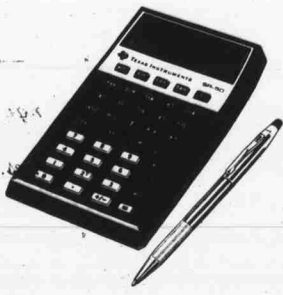
**ABRAXAS staff meeting** for all members—old and new, Sunday, Sept. 22, 7:30 first floor, Bragway Hall. Please come.

**FOR ALL THOSE** whose heads are into Psychology or would like to be, there will be a come-get-acquainted meeting of the Psychology Club on Monday, Sept. 23 at 6:30 p.m. in room 436 Poe Hall. Everyone and faculty is invited. Speakers will discuss options in psychology and refreshments will be enjoyed. Hurrah!

The Technician (volume 54) published every Monday, Wednesday and Friday during the academic semester, is represented by National Advertising Service, Inc. agent for national advertising. Offices are located in Suits 3130-31 in the University Student Center, 405 Avenue C. Campus mailing address at P. O. box 5698, Raleigh, North Carolina 27607. Subscriptions are \$5.00 per academic semester and \$12.00 per year. Printed by Enterprise Printers, Inc., Mebane, N.C. Second class postage paid, Raleigh, N.C.

## Hudson & Belk

Texas Instruments slide rule calculator SR-50



NOW AVAILABLE \$149.95

- Performs all classical slide rule functions—simple arithmetic, reciprocals, factorials, exponentiation, roots, trigonometric and logarithmic functions, all in free floating decimal point or in scientific notation.
- Features an algebraic keyboard with single function keys for easy problem solving.
- Most functions process displayed data only—allows separate processing of data before entry in a complex calculation.
- Memory allows storage and recall of numbers, features sum key for accumulation to memory.
- Calculates answers to 13 significant digits, uses all 13 digits in subsequent calculations for maximum accuracy.
- Computes and displays numbers as large as  $-9.999999999 \times 10^{99}$  and as small as  $-1.000000000 \times 10^{-99}$ .
- Converts automatically to scientific notation when calculated answer is greater than  $10^{99}$  or less than  $10^{-99}$ .
- Performs operations in the order problem is stated.
- Features bright 14-character display—10-digit mantissa, 2-digit exponent, 2 signs.
- Display provides overflow, underflow, and error indications.
- Features the following function keys:
  - + Addition Key
  - Subtraction Key
  - x Multiplication Key
  - ÷ Division Key
  - = Equals Key
  - CE Clear Entry Key
  - MC Clear Key—Clears information in the calculator and sets the calculator to zero.
  - PI Key—Enters the value of pi ( $\pi$ ) to 13 significant digits into calculations.
  - Change Sign Key—Changes the sign of the number displayed.
  - Square Key—Squares the number displayed.
  - Square Root Key—Finds the square root of the number displayed.
  - Reciprocal Key—Finds the reciprocal of the number displayed.
  - Factorial Key—Finds the factorial of the number displayed.
  - Sine Key—Determines sine of the displayed angle.
  - Cosine Key—Determines cosine of the displayed angle.
  - Tangent Key—Determines tangent of the displayed angle.
  - Inverse Trigonometric Key—Determines the angle of the selected trig function whose value is the displayed quantity, when pressed as a prefix to the sin, cos, or tan key.
  - Hyperbolic Function Key—Determines the hyperbolic function of the displayed angle when pressed as a prefix to the sin, cos, or tan key.
  - Angle Change Key—Converts the displayed angle from radians to degrees or from degrees to radians.
  - Determines the logarithm to the base 10 of the displayed number.
  - Natural Logarithm Key—Determines the logarithm to the base e of the displayed number.
  - e to the x Power Key—Raises the value of e to the displayed power.
  - y to the x Power Key—Raises y to the power of x.
  - x<sup>n</sup> Root of y Key—Finds the x<sup>n</sup> root of y.
  - Exchange Key—Exchanges the x and y quantities in y<sup>x</sup> or x<sup>y</sup> before the function is processed.
  - Store Key—Stores the displayed quantity in the memory.
  - Recall Key—Retrieves stored data from the memory.
  - Sum and Store Key—Adds the displayed number to the number in the memory, and stores the sum in the memory.
- Full floating decimal.
- Lightweight, fully portable.
- Rechargeable batteries or AC operation.
- Full year manufacturer warranty.
- AC Adapter/Charger included.

Street Floor - Downtown  
Second Floor - Crabtree Valley

He was always on location...  
But, she had...

**THE LAST SHOW**  
IN FULL COLOR

ADULTS ONLY  
**LATE SHOW TONIGHT & SAT.**  
AT 11:15

colony theatre  
Phone: 833-2302

**Legs, roots, and trig are your business.**

Meet your partner.

\$129.95

The Rockwell 202 Electronic Slide Rule is the right kind of business partner when your business involves these functions:

- TRIGONOMETRIC INVERSES
- TRIGONOMETRIC LOGARITHMIC
- ROOTS and POWERS
- ARITHMETIC

And while the 202 is as portable and versatile as your old slide rule, it out-performs 2 every time and do it with computer-like accuracy. And that's just for starters. The 202 also has:

- Fully-addressable memory
- Automatic constants
- Full-floating decimal system
- Big, easy-to-read digitron display (8-digit capability)
- Pre-programmed degree/radian selector

See the 202 Electronic Slide Rule and put your new business partner to work for you today.

Carolina Calad  
FRANCHISE DEALER  
ROCKWELL INTERNATIONAL  
Electronic Data Systems  
PHONE 781-2580  
North Hills Office Center  
3802 Merton Dr.

**AUTOCROSS**  
Sunday in  
E Coliseum lot

**West German GARAGE**  
SPECIALIZING IN...  
AUTOMOTIVE SERVICE & REPAIR

Specialty AUTO SERVICE  
SPECIALIST IN IMPORT CARS  
ALL MODELS - ALL YEARS  
- MAJOR TUNE-UPS - LUBRICATION  
ELECTRICAL SERVICE

851-1236  
2515 HILLSBOROUGH

**LEATHERCRAFT SUPPLIES**  
Salt Shakers  
Soda Squeezers  
Antique Dye  
Leathercraft Tools  
Leather Hides  
Dressmaker  
Oak Shovel  
Gourmet sandy Shims  
Leigh Leasing

**ZACK WEISS LEATHER COMPANY**  
Wholesale-Retail  
2000 Wake Forest Road  
Raleigh, NC 27607  
Mon-Sun 10am-7pm  
Saturday 10am-4pm

**CATHOLIC ORPHANAGE** (behind Channel 5) needs tutors badly in general subjects for grade school and high school children. If interested, please call 834-1770 after 7:00 p.m.

**FREE LEGAL ADVICE** Don Solomon, Assistant Dean for Student Development, 204 Peele. Phone 737-2441.

**THOFF INC.**

foreign car repair  
service, parts, accessories,  
& machine shop  
for VW, TOYOTA, DATSON,

1109 n. west st. 8338671

**LEAVES of GRASS**

a musical celebration  
based on the writings  
of Walt Whitman

September 21st  
at 2 and 8 pm  
Stewart Theatre  
University Center INSSU

See your evenings call - 737-3005

**ABORTION**  
THE FINEST MEDICAL CARE AVAILABLE  
N. C. Information  
A.L.C. Services (704) 347-9172

**Diamonds At Lowest Prices**

1/2 carat ..... \$147.00  
3/4 carat ..... \$187.00  
1 carat ..... \$297.00

**Benjamin Herman**  
Diamond Specialist  
Squires - 704 8667 866  
322 Plymouth St. 28403

When you enroll in Air Force ROTC you can get more than a chance at a scholarship and a chance at flying lessons...and

**You get a tax-free monthly allowance of \$100.**

Interested?

Contact Major Wingfield  
A- Room 145  
Reynolds Coliseum  
PUT IT ALL TOGETHER  
IN AIR FORCE ROTC



## Spokes and Freewheels

# 10 speeds not always best

By Carl D. Henry

A few years ago, when I finally finished assembling my Libertas 10-speed bike, I got into a bad habit. I constantly rode around town, hunting for all the bikes that didn't look as good as mine. Then, I would promptly rub it in to the owner.

I've learned better now. Because any bike is a good bike and all bikes have their uses. To say that a one-speed is bad and that a ten-speed is great is about like comparing a station wagon to a racing car—you can't carry many groceries in a Corvette.

**IN FACT**, the one-speed is really a fantastic machine. It works for years on a minimum of maintenance. You can hit it, wreck it, ride it all over curbs or just leave it out in the weather and it'll come back for more.

The one-speed is perfect for kids. It's also a great around town bicycle. A one-speed will give you everything you need for general use unless you live in the mountains. And a one-speed will give it to you at a very low cost.

The only pitiful thing about a one-speed is the quality of its components. Except for a few

really great track racing bikes, one-speeds are generally fitted with cheap, low-quality parts. That's why they're so heavy.

**THREE-SPEEDS** are generally one-speeds with a three-speed internal hub added to the rear wheel. The three-speed is a great utility bike. It takes about as much maintenance as a one-speed, which ain't much. And in return, you get three good gears to play with.

The gear system of a three-speed has a few advantages over the ten-speed. You can stop a three-speed at the bottom of a hill, change gears to

match the hill, and start up again without causing any derailleur problems. This is a big help when stopping for a traffic light. Also, a rear hub needs less care than a ten-speed system.

Raleigh is really three-speed country. If a person were to live here all the time and ride his bike to work, then a three-speed would be worth having around.

**THE DISADVANTAGES** are about the same as a one-speed. There is really no way to buy a truly good machine. Nobody makes them. I'd like to see a good

three-speed on the market—one with quality tubing and alloy parts. A twenty-five pound three-speed would have a lot more uses than the present fifty pound bikes. They would really be usable.

Another advantage of either a one or three-speed bike is that there'd be less chance of theft. There is not that big a market for single speeds—everyone wants ten-speed machines.

Speaking of ten-speeds, let's talk about them. Ten-speed bicycles cover a wide territory, far too much to cover here. So we'll take them up next week.

## 'Grass' set for State

Walt Whitman speaks louder to today's Americans than he did to his contemporaries, for he is both the spokesman of democratic idealism and the voice of dissent from the establishment.

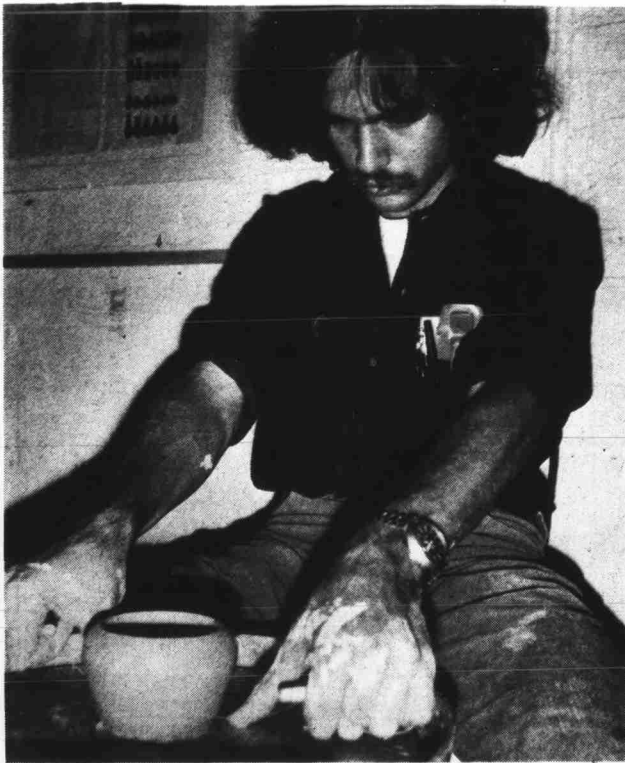
Although this quote was several seasons ago when the musical, *Leaves of Grass*, opened at Theatre Four off-Broadway in New York, it couldn't be more timely and relevant than today.

**LEAVES OF GRASS IS A MUSICAL EVENING OF SONGS, DANCE AND ENTERTAINMENT FOR ALL AGES.** The composer-adaptor, Stan Harte, Jr., developed the entire evening around the

works of Walt Whitman utilizing dialogue, music and choreography to develop the story into a meaningful and inspiring evening.

From the opening strains of "There Is That In Me," through the spiritual beat of "Oh, Captain, My Captain!" to the rousing finale, "I Hear America Singing," the audience finds *Leaves of Grass* to be delightfully "Americana."

**THE TALENTED YOUNG** New York company of four actors-singers plus three musicians will be on stage Saturday at 2 and 8 p.m. in Stewart Theatre. Student tickets are \$3 and are available at the Box Office.



Dave Kaplan, practices his pottery in the University Craft Center.

# classifieds

**HOUSEMATE WANTED** - 2 bdrm. townhouse about \$100 per month. Ron 851-3484.

**METHOD APARTMENTS** on Ligon Street across from McKimmon Village. New two bedroom units \$160. Call Rick Pendell, Wilson and Company 876-1511.

**72 MGB NICE**, LOW mileage. \$2850. Firm. 851-3812. 67 Corvette Convertible. Blue w/white top. 327 4 speed. \$2400. 851-3812.

**FOR SALE:** 71 Yamaha 250 DT-1. Webco Head Compression release. 851-3319.

**FEMALE ROOMMATE** for 2 bed room townhouse at Ammonford Village. References provided. Call 851-6116 after 6.

**WOULD LIKE TO DO TYPING** in my home. 467-0639. Call before 9 or after 3.

**NIKKOR 45 GN 1:28** Used little. \$75. Marshall Stone 84 832-7341; 4 on 821-7119.

**MOBILE HOME** for sale. Washer, dryer, and appliances, central air, all electric, located on large lot with low rent. Like new only cheaper. Call 834-4404 after 6 p.m.

**STUDENT JOBS** still available at Student Center Food Service Monday - Friday 10 a.m. to 3 p.m. See Mr. Barkhouse or call 737-2160.

**INFLATION STARTING TO HURT?** Are you interested in earning a good second income. Call 876-2433 for interview.

**REWARD FOR THE** return of man's diamond ring lost in Riddick Hall. Phone 851-1827.

**EXPERT TYPING** of term papers, theses, manuscripts, technical reports, general correspondence, etc. 851-7077 or 851-0227.

**DEB SHOPS** have an opening for individual to do odd jobs and deliveries. In the Raleigh, Durham, and Chapel Hill area. Truck and gas furnished. Hours negotiable. Pleasant working conditions. Call 833-2843.

**MARQUIS DIAMOND** engagement ring. Appraised at \$1100. Asking \$950. 834-5714 5 to 6 p.m.

**VESPA MOTORIZED** bicycle. \$275. 25 mph, 140 miles per gallon. Bill Giduz 832-4411 7 a.m. to 3 p.m.

**WEAR NEW JEANS** to the game from Factory Outlet, 2904 Hillsborough (across from Red Barn).

**HELP NEEDED** in Crib Room of St. Paul's Christian Church. \$5 per Sunday (9:45 - 12:15). Call 787-8662 or 851-5548.

**TWO BEDROOM** house within walking distance from campus. One couple, only \$125 a month. Immediate occupancy. Ask Chung in HA 208 day or call 833-0090 after 5.

## Football

GREBS vs. NURDS

For an intimate evening try the



## Red Ox North

(located across from the North Ridge Country Club)

The Mood is warm — the steaks prime — the spirits high. We feature a large lounge area with a full selection of beers and wines.

All A B C permits — Charge cards

Falls of News and Sandy Forks Roads 876-4883 788-8777 876-3772

## Why We Believe the Advent 201 Is the Most Satisfying Tape Machine of Any Kind You Can Buy.

In 1970, Advent decided to do what no manufacturer of tape equipment was doing: to develop cassette equipment that was not only convenient and fun to use but capable of making and playing recordings that would be fully comparable to the best open-reel tapes and LP records. Accordingly, we became the first, and for quite a while the only, manufacturer to apply such crucial innovations as the Dolby System of noise reduction and DuPont's chromium-dioxide tape to cassette recording. While developing our high-performance cassette equipment, we also held demonstrations of what was possible in cassette recording for the public, press, and other manufacturers, and lobbied for Dolbyized pre-recorded cassettes from the major labels.

The major product to come out of that process was the Advent 201 cassette deck. The 201, one of the most highly and explicitly praised products in the history of audio products, has been on the market for two years now. It has literally dozens of competitors claiming equivalent or better performance.

But we believe it to be not only as good in every way as more recent and far more expensive cassette machines, but to be as satisfying for the most critical home-recording purposes as any tape machine of any kind. Here are some questions and answers to help define that satisfaction:

### Why Is The 201 Such A Simple Machine?

Because we wanted it not just to be capable of making excellent recordings but to make it easy for the listener to obtain its full performance time after time, recording after recording. Most tape recorders of all kinds and all prices don't make it easy for the user to get best results every time or at all, and many are made needlessly complex to operate because of too many marginal "features" that were assumed necessary to make them attractive (or competitive with other machines) in an audio showroom.

It's important to point out, we think, that Advent products are designed with far more thought to satisfying people after they buy than to what might tempt them to buy in the first place. The 201 has no knob or slider or gauge or indicator light that isn't a useful feature rather than a sales feature. But everything conducive to highest-quality recordings and long-term enjoyment is there.

### Why Does The Machine Look So Different From Most Others?

Because it is different, and far more rugged and reliable than most. It has evolved from a transport that has been in heavy and hard use for years in schools, libraries, and other audio-visual applications, and it is likely to last and maintain its mechanical performance far longer than most cassette machines on the market. It also provides facilities such as automatic shut-off and complete mechanical disengagement at the end of a cassette or in the event of a jammed cassette—with the

latter preventing tape spillage that makes an otherwise salvageable cassette a hopeless snarl of tape. And it enables you to shuttle from one mode of tape motion to another without having to press configuration, you have to hold onto the Rewind-Forward lever while you use it, but its action is so fast that we have had vanishingly few complaints from customers about it.

### Why Does The 201 Have A Single VU Meter Instead of Two?

Because that proved, after consideration of all possible approaches, to be best—combining precision and simplicity. One of the troubles with using two VU meters in home recording is that they tend to lead the user to adjust them to read the same on both channels. In reality, though, the material on the two channels is usually different, and the meters shouldn't read equally. Two meters also produce a tendency to correct for overload or under-recording by adjusting only the channel whose meter showed too high or low a level. But if the channels were balanced properly in the first place, this puts them out of balance.

The 201's single VU meter, unique in cassette equipment, scans both stereo channels and instantaneously registers the louder peak on either at a given moment. The listener first uses the meter, which can also be switched to read either channel individually, to set channel balance with a pair of Input Level controls. Once balance is set, the meter is set to scan both channels, and final recording level is set or changed with a single Master Level Control that operates on both channels—

leaving the balance undisturbed. This sequence provides far more accurate level-setting than is possible with the overwhelming majority of tape machines of all kinds.

Not only does the 201's meter read instantaneous peaks (by far the most accurate indicator of possible overload), but its action is compensated to indicate the exact point of tape saturation at all frequencies. On rock music in particular, overload is most likely to occur and be heard at high frequencies, and most level-indicators on tape recorders of all kinds don't register full high-frequency content.

We know of no metering system more advanced or effective than the 201's. Most not only aren't as accurate, but tend to mislead the user.

### Has The 201 Been Changed?

Yes and no. We have made Volkswagen-style changes as we have gone along, including the change of our original meter for better indication of high frequencies, but the changes were mainly in the direction of making use of the machine still easier and more precise. They would be hard to hear on most musical material, and we made them mainly because it seemed the responsible thing for a manufacturer to do.

### Why Is The 201 Fairly Small?

Because its design consciously avoids needless gadgetry that might make it bigger, and also avoids what you might call "packing air" in order to make a product look like there's more in it. We don't think we have the right to make something that takes up far more of your living space than it has to (or whose chrome shines in the dark) to get you to buy it.

### Why Does It Cost Less Than Machines Claiming Equivalent Performance?

Again, because needless gadgetry is not there. And because we made the lucky decision to manufacture it in this country, avoiding the price rises that have resulted on imported products because of the fluctuation of the dollar vs. foreign currencies.

### Why Did We Pick These Questions?

Because every manufacturer attempts to direct your attention in advertising. We want to direct it toward the realities that we feel genuinely determine whether something is enjoyable or not, because what we see on other products—including the confusing variety of super-expensive cassette

machines now being publicized—tells us that we give far more attention to those realities than most other manufacturers. Ours isn't the only good cassette machine in the world, but there is none likely to satisfy you more in the long run.

If you would like more information on the 201, including its reviews, please send us the coupon.

Thank you.

### About Advent Chromium-Dioxide Cassettes:

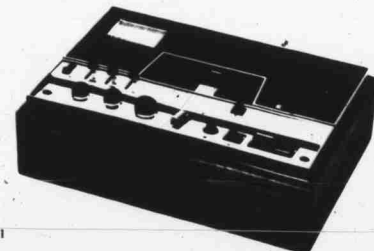
While we were developing the first high-performance cassette equipment, we became convinced that DuPont's chromium-dioxide tape formulation was crucial for optimum recordings, and began to put it in cassettes and market it on our own. Advent Chromium-Dioxide tapes are made to live up to the quality of the tape they enclose. If one ever jams, we will either replace it or, if you prefer, do our best to transfer a valued recording to another cassette.

Advent Chromium-Dioxide tapes cost no more than other premium-grade cassettes. We think you will find them a bargain.



**SOUNDHAUS**  
Cameron Village Subway  
Raleigh, N.C. 27605  
Gentlemen:  
Please send me information on the Advent 201

Name \_\_\_\_\_  
Address \_\_\_\_\_  
City \_\_\_\_\_  
State \_\_\_\_\_ Zip \_\_\_\_\_



The Advent 201

Trade-Ins Accepted

Dial 832-0557

# SOUNDHAUS

Cameron Village Subway MTWTF 11-9 S 10:30-6

Student Charges

# Athletes are students first; sports second priority

Accusations placing athletics before academics have been made against Virginia football coach Sonny Randle by some former players of that team. The allegations were made in a copyrighted story in the *Cavalier Daily*, UVA's student newspaper.

Whether the accusations are true or not, intercollegiate athletics at any university are likely to come under similar fire, and have already, throughout history.

Collegiate athletes, to say the very least, are an extremely hearty group. Being a college athlete is very similar to

trying to carry a double academic major. Both classes and sports require an extreme amount of time and dedication, especially when one considers the pressure placed on athletes such as State's by both students and alumni. The old cliché, "No one likes a loser," could be no more valid than at an ACC school.

Athletics, while morale-wise are extremely important to the sports fan, must be looked upon in varying degrees of importance. To athletes like David Thompson the world of sports is a potential career and is thus considered of the utmost

importance. David is one of a small minority who considers his education as important as his phenomenal athletic ability.

Then there are those who will not go on to play professionally and whose education will be their only monetary reward for four years of giving and learning. To these athletes academics are by all means the most important factor of their four year internship.

The State Athletic Department seems to have a realistic grasp on the separation of these two activities. Head Football Coach Lou Holtz has assured us that academics are of primary concern to the athletic department and in a very tight, but definite second, is the push for victorious teams such as those we have been seeing in recent years.

Wolfpack coaches do what they can to help athletes in academic trouble but only when asked by the athlete himself. When an athlete begins to feel he is having trouble he can ask for tutorial help and the athletic department will do what they can to arrange for some form of tutoring. That is the extent of the special services available to an athlete at this institution.

The student body of State can be doubly proud of their coaches and athletes who give wholeheartedly both on and off the athletic stage. They are students first and athletes on the side.

Nicholas von Hoffman

# Self-righteous press

by Nicholas von Hoffman

Washington(KFS)—Monday night prime-time television gave us a new quiz show: Jerry Ford playing 20 questions with the White House press corps, a group which seldom distinguishes itself for its acuity. Yet even this body of high-status, low-enterprise journalists ought to be able to discern the difference between a Jerry Ford and a Richard Nixon.

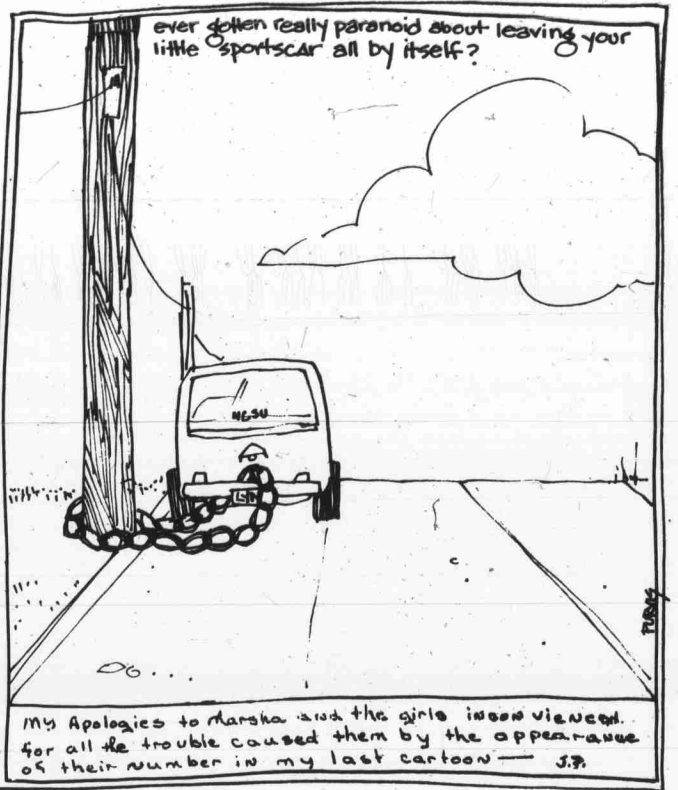
It was these same reporters who, but a month ago, tired a skeptical nation with their bad writing about what a good gut Jerry Ford is. That, apparently, went out the window when Ford did something they disapproved of by pardoning Nixon.

On the basis of that single act, a number of reporters—not all by any means—felt entitled, under the guise of question asking, to attack Ford's honesty and probity.

How else can this inquiry be described? "Do you find any conflicts of interest in the decision to grant a sweeping pardon to your lifelong friend and your financial benefactor with no consultation for advice on judgement (sic) or the legal fallout?" Is that a question or an insult?

How Do You Answer?

Or what about this inquiry, flung at the good-natured unfortunate trying to overcome his handicaps in the White House: "Last month when you assumed the Presidency, you pledged openness and candor. Last week you decided on the ex-President's pardon in virtually total secrecy. Despite all you've said tonight, there would still seem to be some confusion, some contradictions. . . Are your watchwords (sic) of your Administration still openness and candor?" How is Jerry Ford



# OPINION

## Food service offers more for students

After years of unprecedented growth State seems to have reached a temporary saturation point. This year more than ever before the University is faced with a serious shortage of facilities: parking, housing, classrooms, and recreational.

Despite immediate appearances State still possesses one facility which theoretically can withstand the strain. Food service in the University Student Center is pulling out all the stops to provide good, inexpensive food for this ominous student population.

As a public service media of this university, the *Technician*, wants State students to be aware of the actual facilities the University Student Center Food Service provides.

Despite constant advertising on the part of food service most students do not really understand what they can get in the Student Center. For instance, did you know you can get an all you can eat meal in the Buffetaria on the first floor? For that matter, did you know the Buffetaria existed? And how about the Walnut Room? The Wall what? On the fourth floor of the

Center we have a very posh little cafeteria open Monday thru Friday for lunch and Monday thru Thursday for dinner.

The student body seems more than aware of the facilities of the Ice Cream Bar (1400 people per day) and the annex snack facility (2800 per day), but we feel the Student Body should know what facilities their union provides in total.

And so we commend Center Food Service Directory Larry Gilman and Assistant Director Walter Barkhouse for the service they are rendering to the students of this university. They have expanded food service in line with what the students want and need, and have attempted to do so while keeping prices as low as feasibly possible.

As a further service to Mr. Gilman and the student body we would like to inform the starving student that Food Service desperately needs good people and pays one of the best student wages around (\$2.20/hour). So all of you looking for a way to make a buck, do something for yourself and your fellow students. Look into Union Food Service.

## Blissful Ignorance

# Amendments for political business

by Larry Bliss

This is my angry political column. Its roots lie in the month after Nixon resigned, when I thought that Gerald Ford was a cut above the usual slime of Washington politicians.

Then he pardoned Nixon and joined in the every day acts of moral cowardice that we now expect of our leaders.

So instead of trying to expect our elected representatives to uphold the principles of the

Constitution, let's amend it to conform to the way political business is conducted. With these proposed amendments, we can honestly say that things are in rotten shape.

1) The office of President shall be replaced by a new office, the Precedency. The Precedent shall make no original decisions, but shall follow the established methods of past Precedents. Along with present Constitutional duties of the President, the Precedent shall serve as a target

for all attacks on the political system. The Precedency should not be allowed to gain respect in the eyes of the people.

2) The Precedent shall serve as long as is necessary to create an atmosphere of distrust that would force him to resign, thus making the Vice-President the new Precedent. Under no circumstances shall former Precedents make any admission of wrongdoing in their term of office. All former Precedents shall be immediately

pardoned, providing their mothers are saints. This is created the doctrine of the impossibility of immoral action by the Precedent (Precedential Infallibility.)

3) All Congressional elections shall be determined by public auction of Senators and Representatives. The candidate who sinks the most money into the media bombardment is the winner. In the case of a tie, the winner is the one who submits the best football plays to NFL coaches.

4) All salaries for Congressmen shall be eliminated, forcing them to rely on illegal funds.

5) Since most people are guilty of something (check your pillow tags) trial by jury shall be replaced by trial by ordeal. A defendant will be forced to eat fried chicken with bare hands. If his fingers are greasy or slippery, he is guilty.

6) Unemployment shall be solved by inciting class wars, thus creating jobs for millions of Neo-Marxists.

7) The manned space program shall be rejuvenated by training subversives and dissidents as astronautats for orbiting space capsules. Retro-rockets shall be optional on these capsules.

8) Stand-up comedians shall be employed to train new public servants.

9) Pay toilets shall be permanently abolished. 10) The present inflationary system of currency and credit shall be largely replaced. All coins will be made the size and weight of tractor tires to prevent hoarding. Bills will be made as large as coffee tables for the same purpose. The barter system will be used for most transactions. Items such as comic books, plastic flamingos, beer cans, and Rod McKuen shall be used for trade.

A final note to those who think that nothing is wrong in Washington.

Early on morning Betty Ford bumped into the President in the White House hall, "Pardon me," she said.

"Just a minute," replied Ford, "let me get my pen."

# The Funny Page



get the high-interest rates and investment security the rich people get. The reason for the decision has to do with an attempt to save the savings and loan associations savings banks, whose situation is deteriorating so seriously that even Milton Friedman is advocating government subsidies to save them.

No questions on any of that or on the major collateral issue of housing, although you can safely assume that the millions watching might have a passing interest in these frivolous topics. Any reporter needing to vent his angry spirit could have done so legitimately by asking Ford why he left the labor section of the recent White House economic conference to dedicate the World Golf Hall of Fame. They might have asked him if that symbolic act reflects his judgment of labor's bargaining power or the importance of the subject.

In a half-hour press conference there was time for only 20 questions, and a lot more hands were raised. Maybe Ford was unlucky with his picks, and had he called on other waving arms he wouldn't have had buckets of moral excreta dumped on his head. Let's hope so, but the impression left by the press conference is that it is easier to puff up and play the Conscience of America—and certainly more satisfying—than to do the homework needed to ask useful questions. Assuming a posture of high-headed moral outrage demands little thought, and less study.

It is a bad pose to strike near Jerry Ford. This man of limited talent, gifts and bleakly narrow understanding is an easy target when attacked as a President, but not as a man. He's wrong on nearly everything, but he's not a bum. And if the high flyers who cover him can't make that distinction, Ford will be justified in abolishing the press conference as an institution that has not only grown to be archaic, but as an obnoxious intrusion on the television quiz shows where at least they give away money.

Copyright, 1974, The Washington Post-King Features Syndicate

## Sorry, Marsha

We, the *Technician*, would like to make a formal apology to Marsha and those others inconvenienced by our editorial cartoon of Wednesday, September 18, 1974.

While the cartoon was intended as a parody on the graffiti appearing on the walls of any men's room, we had hoped that mature people (State students), would not take such trivia seriously.

We, the editorial staff, are humbled by the unfortunate error we made in letting your name be associated with the cartoon in question and ask your forgiveness for publishing the same.

The telephone number published in our cartoon no longer exists. It is unfortunate that harassment has necessitated this action.

So to you, Marsha, and all State women, we apologize for the poor journalism we have shown which brought about this unfortunate incident.

## Technician

Editor: Bob Estes  
Senior Editor: George Pantan  
Associate Editor: Kevin Fisher  
Editorial Assistant: Ted Simmons  
News Editor: Howard Barnett  
Sports Editor: Jim Pomeroy  
Features Editor: Reed Haines  
Arts Coordinator: Jean Jackson  
Managing Editor: Terry West  
Production Manager: Dwight Smith  
Photo Editor: Arlie Redding  
Business Manager: Dennis Vick  
Circulation Manager: David Martin

Founded February 1, 1960 with M. F. Trice as the first Editor, the *Technician* is published Monday, Wednesday, and Friday during the school year, except during holidays and exam periods, by the students of North Carolina State University.



# letters

## Right or Ron

To the Editor:

Ever since the first day that I took office as President of the Student Body, a day has not passed without hearing some misinformation relating to ideas, programs, and opinions that this administration is concerning itself with. I, for one, try to seek out as many opinions and/or ideas, concerning areas of importance as I possibly can before making any statements and/or judgments. This includes information from persons in responsible positions.

Ms. Susan Kirks, News Director of WKNC, inferred that my administration is taking the credit for the entire washing machine project. First of all, this administration is taking credit for nothing if it does not seek to bring about—whether it be programs of need to the Student Body or those being planned. I was quoted as saying the Administration of the University has been very helpful in implementing the washing machine program and this statement is absolutely true. However, this statement was made to inform the Student Body that we are working together and sharing ideas concerning the program. It does not mean that we are responsible for the program itself. It is also a fact that in my campaign I stated that if elected I would work to put washers and dryers in areas on campus that would serve the student body's interest.

Together, Student Government and the University Administration have worked diligently to bring about such a program. It is a fact that the residence hall washer/dryer program had been investigated before I took office. But it is also a fact that my administration has worked in relaying information, giving ideas and opinions concerning this project. This program we are working on, in co-operation with the Administration, is merely to achieve the goal of bringing more washers to campus. I was quoted as saying it was my so-called original and ingenious idea to bring about this program. This is not true nor does it even come close to being the truth. The Associate Dean of Student Affairs, Gerald Hawkins, and I are in complete agreement as to just how this program has developed and progressed. We both agree that our cooperation on this matter has definitely enhanced the process of bringing this program out of planning stages and into a reality on this campus. We both agree the only person that seems to be misinformed about this matter is

the News Director of our campus radio station.

A statement was made that I misinformed the Student Body concerning a full-time maintenance man who would work to take care of the machines on campus. Ms. Kirks says, in essence, no such individual exists. For those interested in the truth, all that is necessary is to call E.E. Durham, the Business Service Officer of Business Affairs, at the University. He also signed the contract with Dr. Hawkins to let the University Laundry Facilities take over the operation of the machines including maintenance. The contract says a full-time maintenance man will take over looking after the machines.

There are other statements made by Ms. Kirks concerning an apparent lack of communication between the Director of Residence Facilities and his superiors. The Director says investigations have been made and completed as to the availability of spaces for future washers and dryers. However, I was told it would be good if I could contact the Presidents of each dorm and ask them for a list of available spaces within their dorms for future washers and dryers. Well, quiet frankly, I seem to be a bit confused and I think anyone can see why. I am certainly hopeful that the lines of communication with respect to the Director of Residence Facilities and his superiors can be opened, at least for the Student Body's sake.

It bothers me greatly that the News Director of WKNC cannot be more precise in relaying information than the case seems to be, and in fact is. Furthermore, it is our sincere wish this year to raise Student Government's image in the eyes of the Student Body, but of course, anyone can obviously see that such misinformation compounded by misinterpretation will only hinder the process. This also includes Student Government's ability to bring anything to this campus.

In conclusion, a final comment is made by Ms. Kirks that the important thing, of course, is that the program be completed; but equally important is the truth in the matter. Well, for once, I agree wholeheartedly, but let's make sure that while the program is being completed the real truth and not the opinionated truth is revealed. I am at least thankful the Student Body will be the final judge in this matter. We are not taking credit unduly but, as I mentioned in my platform, we are going to work to bring an increment of washing machines in areas of need to this campus.

Ron Jessup  
Student Body President

## Oink!!

Dear Editor

N.C. State has always been thought of as a cow college, but this year it is overrun by pigs. I can't get out of my car without being squealed at. After receiving my first citation, I considered asking W.H. Williams for a pardon, but I decided that criminals should not be forgiven.

It is getting so ridiculous that one day I stopped too long at a stop sign and the next thing I knew, I was being towed away. The security officers are so afraid a traffic violator will get away, they only watch football practice twice a week and now they have had to cut out nearly half of their daily coffee breaks.

But with the addition of the parking deck and the clamping down on Fraternity Row, their

"jurisdiction" has increased substantially. Of course bicycle theft and rape are acceptable on this campus and so as long as the traffic violators are nailed, we will all feel "secure."

A Victim,  
Lorian McDowell  
Beeton

## Whose day?

To the Editor:

Your editorial of September 16 entitled "A Better Idea was unbelievably inaccurate. In it you gave full credit to our relatively ineffective Union Entertainment Committee for "THE DAY." In actuality, the "THE DAY" committee was comprised of four members of Inter Residence Council and myself. Thus, we were never affiliated with any Union committee. After the

death of All Campus last year, we obtained some money from the funds allotted to it. Save that, the only help we received from the Union was that of Les McDonald and Mrs. Phibbrick, to whom we remain indebted. Even then the "THE DAY" committee went to each and every House Council on campus and received contributions. Of the total budget for "THE DAY", but half came from the All Campus surplus.

The goal of the editorial, which was to provide numerous, relatively inexpensive social events, is highly commendable, for while we have students working for students, events on campus can be dynamic and successful. This, I believe, was proven quite effectively by "THE DAY" itself.

Therefore, in the future, research your editorials more carefully. After all, a misinformed campus has never and will never be a functional, unified campus.

Mike Stanton  
TAG

# dr. bag

*My girlfriend claims that there are drugs that would grow hair on my chest. I don't believe this is possible. I have a lot of hair but it is like "peach fuzz". Would hormone injections stimulate the hair follicles to grow and darken?*

*I've been meaning to get this question off my chest for some time now.*

There are no drugs that can safely be used to grow hair on one's chest, or anywhere else. The administration of male hormones for such a purpose would be highly dangerous and probably not effective.

The major determinant of body hair distribution and appearance is genetic. Of the changes which begin at puberty, the appearance of hair on the chest and body is the slowest and latest to develop. Body hair often continues to increase in amount and distribution into the twenties.

\*\*\*\*\*

*About one week after my period ends my breasts get very sore and sensitive. This lasts until my next period. What causes this and what can be done about it?*

*Could it be because my boyfriend fondles me too*

*roughly? Is the soreness connected with orgasm? Are my bras too tight?*

Women often experience some breast tenderness before the onset of their menstrual period (a "real" menstrual period, not what occurs with the pill). Such tenderness is due to hormonal changes that are part of the menstrual cycle. Birth control pills themselves can produce breast tenderness and so can too tight a brassiere. However, a tight bra produces breast lumps as well as tenderness.

Breasts are easily traumatized as they are made up mainly of fatty tissue. Black and blue marks and other evidence of damage should be apparent if injury has occurred. This leads up back to your boyfriend. It could be that he is fondling you too roughly or just fondling you too much. Breasts respond to stimulation with the swelling of the mammary tissue as well as the nipples and the tenderness could be secondary to the swelling. In addition to alleviating the pain, you might forestall the onset of boredom if you get him to decrease his efforts somewhat.

\*\*\*\*\*

*I have been working with an oxygen-acetylene welding outfit in my home basement. Everything*

*had been going fine until last night when I took a deep breath and my lungs hurt. Although breathing is normal this morning, I am wondering what gases I might be inhaling when the oxygen, acetylene and steel react. I don't know the chemical composition of the steel, I just find scraps in yards and dumps. Since the open windows don't seem to provide adequate ventilation, I thought a breathing mask might help, but I don't know anything about masks.*

A wide variety of gases are produced in the welding process. The type of gases generated are dependent upon the nature of the material being welded and the types of chemicals the metal has been treated with. By and large, welding does not seem to be especially dangerous procedure from the point of view of poisoning oneself with gases.

Certain metals, especially those containing copper, do produce toxic fumes. People who weld copper-bearing metals are generally advised to wear a mask that not only filters particles from the air, but contains a canister with material which will absorb certain gases. An appropriate mask can be obtained from dealers in industrial safety equipment. They are listed in the Yellow Pages under Safety Equipment and Clothing.

# Cultural Revolution continues in Mao's China

by Tang Tsou

CHICAGO—The present campaign to criticize the late Lin Piao, the former sole Deputy Chairman of the Central Committee of the Communist party, and Confucius is considered in China to be the latest phase of the continuing Cultural Revolution, which began in 1966. But the present campaign is totally different from the early phases of the Cultural Revolution from 1966 to 1968.

These basic differences concern the structure of power, the personal relationship and political style of the major actors, the institutional setting, the policy issues at stake, and the problems to be resolved.

Hence, the present campaign has taken a different form and followed a different course of development.

Chairman Mao Tse-tung launched the Cultural Revolution to purge the "power-holders" who disagreed with him on basic policy questions. Since he had to rely on Lin Piao and the People's Liberation Army, under Mr. Lin's operational direction, the informal political group around Chiang Ching (Mrs. Mao), and millions of student Red Guards, he had to have absolute control over them and sometimes had to allow them to follow courses of action against his better judgment.

At present, his authority is above challenge. Chiang Ching; Wang Hung-wen, a party Deputy Chairman and ranked third to Mr. Mao and Premier Chou En-lai; Chang Chun-chiao, a member of the nine-person Standing Committee—the power core—of the Politburo; Yao Wen-yuan, a Politburo member, and the political forces represented by them still lack the political influence, prestige, experience and organizational ability to act without his support.

Premier Chou En-lai is in the process of rebuilding the Government administration and must rely on Mr. Mao to control the army and restrain those leftists who wish to effect a drastic change in leadership and policies.

To Mr. Mao, both the leaders around Premier Chou and the groups around Chiang Ching and Wang Hung-wen are indispensable. Mr. Mao relies on the former for the implementation of foreign policy, economic management and Government operations. He relies on the latter to uphold the more radical aspects of the new policies he has adopted since the beginning of the Cultural Revolution.

The Chairman maintains a balance between them, throwing his weight behind one side or the other in the light of changing situations at home and abroad. He gave the signal to start the present campaign, which began in February, and he set down some very broad guidelines. He does not seem to have made clear how far the campaign should go or whether any major political leaders should be the target of attack, or who they are. But it seems unlikely that he seeks to destroy one of the two groups as a political force.

This speculation finds additional support if we look at the personal relationships and political styles of the major actors. In contrast to the failure of Liu Shao-chi, the former Chief of State, now believed dead, to give actual support to Chairman Mao's Cultural Revolution, Premier Chou has played a positive and leading role in the present campaign.

His speeches this year welcoming President Kenneth D. Kaunda and at the banquet for Khieu Samphan, a leader of Communist guerrilla forces in Cambodia, expressed his loyalty to Chairman Mao's "revolutionary line in a foreign policy," as did the speech by a Deputy Premier, Teng Hsiao-ping, at the United Nations. Premier Chou has gone out of his way to show his respect for the position and sensibilities of Chiang Ching—a sharp contrast to Liu Shao-chi's deliberate policy of ignoring her and promoting the influence of his wife, Wang Kuang-mei.

After Mr. Chou, Lin Piao and the army leaders joined forces in August 1967, to repel the attacks of leftists led by the "May 16" group—an ultra-leftist faction in the Cultural Revolution Small Group of which Chiang Ching was the deputy leader—Mr. Chou wisely refrained from

pushing his own advantage too far and chose to limit the purge of the leftists. (The Small Group was one of the four most powerful organs that guided the Cultural Revolution.)

He thus saved Chiang Ching from serious embarrassment and created a foundation for his and Chiang Ching's later cooperation against Lin Piao and Mr. Lin's followers in the army.

Throughout his career, Mr. Chou has demonstrated his willingness to serve the party as a lieutenant of its most powerful leader without endeavoring to capture supreme power for himself. His political style and his personal relationships have given other major actors in the present campaign an assurance that he would willingly share power and authority with them. This assurance is an important factor in setting a limit to the political struggle at the present time.

The institutional setting of the present campaign is also very different from that of eight years ago. Since the 10th Party Congress, in August, 1973, the principle of combining old, middle-aged and young party members in all party leadership organs has been fully carried out, from the group of five Deputy Chairmen at the top to the party committee at the lowest levels. This principle of bridging the gaps between three generations of party members is also intended to

bring about direct representation of the workers and peasants in the organs of power at all levels to give responsible positions to leaders who emerged during the Cultural Revolution.

These new leaders are generally more radical than veteran officials and deeply committed to the new policies and institutions that have emerged since the beginning of the Cultural Revolution. Those at the upper and lower levels can support each other. They form a vertical structure of informal groups with similar views and interests.

The principle of the three-in-one combination and the creation of this vertical structure of informal groups is also Chairman Mao's innovative attempt to solve the problem of succession in the long run and to assure the continuity of his revolutionary line.

But these new leaders at all levels lack actual power, which is still largely in the hands of the veteran and middle-aged leaders. The present campaign in probably intended to increase the power and influence of the newly promoted leaders so as to achieve a better balance.

It may succeed without too much disruption if the young leaders act responsibly and learn the limits of power, just as the veterans leaders have learned not to oppose but to support Chairman Mao's leadership in launching the campaign.

There is nothing in the present campaign to indicate that Chairman Mao wants to change drastically the existing institutions as he did during the early phases of the Cultural Revolution.

After having been twice disappointed in his chosen heirs, Mr. Liu and Mr. Lin, Mr. Mao may have also reached the conclusion that the problem of maintaining the continuation of his revolutionary policies cannot be resolved unless the Chinese as a people have thoroughly repudiated most of the deeply rooted ideas concerning legitimate leadership, personal loyalty, past tradition, and unprincipled compromise. Hence, the linkage between the repudiation of Lin Piao and Confucius in a single campaign. And Lin Piao is being used as a symbol of all that was wrong in Confucian China.

The basic issue in the present campaign, unlike that of the Cultural Revolution, is not how to effect fundamental changes in policies. Rather, it is how to consolidate some of the new policies and to prevent them from being altered in a more conservative direction.

In other cases, it is a problem of how to correct some of the "excesses" without abandoning the new policy.

The new policy on recruiting students to

colleges and universities and the new method of bridging the gaps between the leaders and the masses fall largely into the first category, and relations with the United States fall largely into the second.

There is little doubt that from the viewpoint of some leaders in Peking, China has, since Henry A. Kissinger's first trip in July, 1971, made many concessions to the United States without obtaining proportionate and reciprocal concessions.

China has acted with moderation in Vietnam and Cambodia. But the United States has in effect strengthened her economic ties with Taiwan. The appointment of Leonard Unger as the new Ambassador to Taiwan was a slap in the face to China. So was the American agreement to the establishment of Chinese Nationalist consulates in Portland and Kansas City.

Trade with the United States is totally lopsided in monetary terms, reaching a ratio of eleven to one in America's favor. Yet the United States Government has so far been unable even to give most-favored-nation treatment to China or to settle the issue of frozen assets, not to mention the adoption of more meaningful policies to correct the trade imbalance ever so slightly.

The failure of the United States to make reciprocal and meaningful concessions is particularly irritating to Peking when contrasted with American concessions to the Soviet Union over the issues of arms control, credits and trade as well as the actual and potential gains made by the Soviet Union as in the incredible grain deal and the talk about the development of Siberian oil and natural-gas resources.

Hence, China seems to have adopted a policy of making no more concessions to the United States and of giving preference to Japan in trade matters until the United States has shown willingness to reciprocate some of China's concessions.

In this respect, the issue of Taiwan is particularly important.

A visit by President Ford or Mr. Kissinger at an appropriate time would be useful toward strengthening the new administration's relations with Peking and reversing the present downward trend.

China has undertaken a vast experiment in building a new, more egalitarian society. This experiment cannot succeed without eradicating most of the old values, attitudes, beliefs, and habits of the Chinese people at all levels.

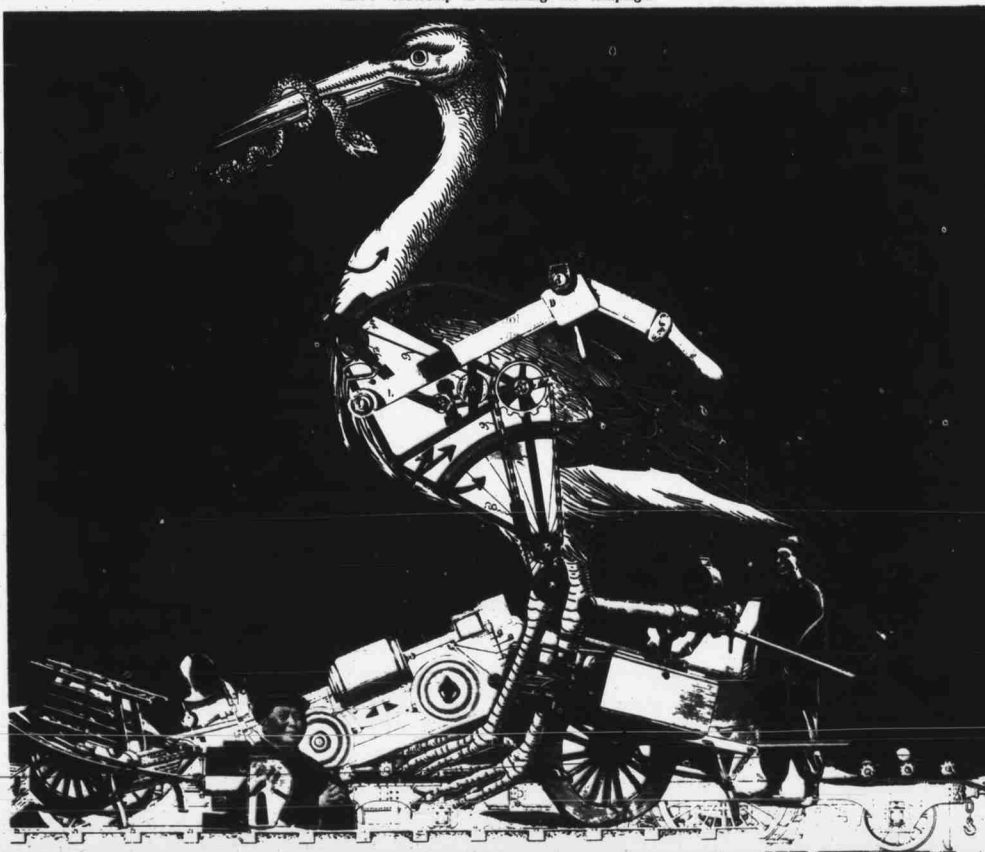
In this sense, the present campaign is a new phase of the continuing Cultural Revolution but in a new form, against a different background and for the solution of a different set of problems.

It remains to be seen whether the factors analyzed here will continue to determine the direction and the limits of the present campaign or whether other new, unknown or unexpected factors, such as Mr. Chou's health will throw the campaign off its present course.

Chairman Mao's great strategic plan may be that if the present campaign succeeds in achieving its purposes without the disruptions characteristic of the early phases of the Cultural Revolution in 1966-68, it will be held as a model for other cultural revolutions that, according to Chairman Mao, should occur many more times in the future, every seven or eight years as he said in one statement.

The progressively improved models of the Cultural Revolution will be used periodically to check the development of bureaucratism, to encourage mass criticism of officials, to make searching re-evaluations of current policies and existing institutions, to enable submerged political conflicts among the top leaders to come out partly into the public realm for debate and resolution, and to provide occasions for national self-examination.

Tang Tsou is professor of political science at the University of Chicago and author of "America's Failure in China" and co-author and co-editor of "China in Crisis."





# SPORTS

## Wolfpack goes for third win against Clemson

by Jimmy Carroll  
Clemson University looms as the next obstacle in State's quest for its second consecutive Atlantic Coast Conference championship.

The Tigers and the Wolfpack will tangle at 7 p.m. Saturday night in Carter Stadium. State will be seeking its 13th straight ACC victory, and its 12th in a

row in Carter Stadium which would establish a record.

Of course, the most important statistic is the 3-0 conference mark which is at stake for the Pack.

**STATE HEAD COACH** Lou Holtz knows that defeating the Tigers will be no easy task, despite Clemson's disappointing 24-0 loss to Texas A&M last

Saturday.  
"I, for one, am not deceived by that score," assures Holtz. "Texas A&M has probably one of the finest football teams in America, returning 21 of 22 starters from last year and has an excellent football team."

"Clemson played them at College Station, Texas at four o'clock in the afternoon under a boiling sun; and, consequently, wilted later in the ball game," Holtz explained. "I thought Clemson had many things in that ball game to be very optimistic about. After the ball game, Emery Bellard, the coach at Texas A&M, as well as five or six of his ball players, made the comment that they thought that Clemson was a vastly improved football team, and I must agree with them."

**HOLTZ CITED** junior college All-American defensive tackle, Jerome Hill and freshman Thad Allen from Sylva, N.C. as leaders on the Tiger line.

"Both the boys weigh about 240 pounds and are very, very quick," Holtz said.

"They have two excellent middle guards," the coach continued. "Nelson Wallace (5-10, 202), last year against us as a freshman, was selected as the most valuable football player in our ball game with Clemson. They have a senior named Willie Anderson (6-2, 211) with exceptionally fine quickness."

Preseason All-ACC line-backer Jimmy Williamson (6-1, 205) is capable of causing more than minor headaches to Wolfpack ball carriers.

**RETURNING** to the defensive secondary is All-ACC safety James Alvin Martin, better known as Peanut. Peanut stole five passes as a sophomore last year, and has the quickness and ability to come up with the big play on occasions.

"Defensively, they are vastly improved," Holtz feels, "and Red Parker (Clemson coach) has never had a problem moving the football."

This is evidenced by the fact that in last year's 29-6 loss to State in Death Valley, Clemson rolled up over 400 yards in total offense.

"We're gonna have to play much better defensively this year if we hope to be able to stay in the ball game," Holtz remarked.

The rushing defense has been one of the Wolfpack's most devastating weapons in the young season.

"OUR RUSHING defense has to be one of the most encouraging things that has happened to us in quite a while," smiled Holtz. "Over a two-game period, we have

given up just an average of two yards per try."

The reasons for this are numerous, says Holtz. A few of the reasons, according to Holtz are Tom Higgins, Danny Rhoden, Ronnie Banther, Mike Daley and Horace Whitaker.

On the other hand, the Pack's pass defense has been vulnerable in both wins against Wake Forest and Duke.

"The secondary and pass defense has been the most discouraging thing," confessed Holtz. "However, we do have some young men playing well. We just have to get better on pass defense."

Clemson's passing attack has at least one potent weapon—tight end Bennie Cunningham (6-5, 252). Although he won't be 20 years old until December, the junior end is called by Parker "the best player at his position in collegiate football."

**BESIDES CUNNINGHAM**, the Tiger offense possesses two capable quarterbacks in sophomore Mike O' Cain and senior Mark Fellers. O' Cain is expected to start, but Fellers could see as much action. Both men have big shoes to fill—those of All-ACC quarterback Ken Pengitore who has graduated.

The rushing duties will be shared by running backs Ken Callicut and Tony Mathews.

"I'm not trying to just build them up," explained Holtz. "But I sincerely believe after watching the film that their performance against Texas A&M was very similar to ours against Wake Forest."

"They were only one man away from breaking it so many times. Once they put it all together, Clemson will be very, very explosive."

Clemson holds a 28-13-1 advantage in the series with the Wolfpack, but the Tigers have not beaten State since they won 24-19 in 1968.

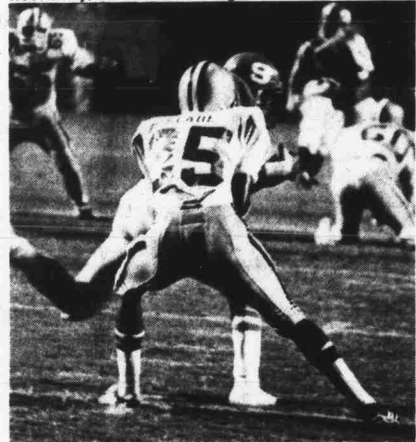


photo by Hedding

Late in the fourth quarter last week Ralph Stringer picked off a pass against Duke to help put a halt to a Blue Devil scoring drive. Stringer will see action at the cornerback position Saturday against Clemson.



Clemson's Bennie Cunningham



photo by Hedding

He flies through the air with the greatest of ease, especially after being hit by a 250 pound defensive tackle. Every little bit helps, and State quarterback Dave Buckley displays his technique for gaining that extra yardage.

## 'Banther excellent football player'

by Tim Watts

Late in the fourth quarter of last Saturday's game between State and Duke the Blue Devils were driving deep into State's territory, were behind by only two touchdowns, and gaining momentum with every play.

Inside State's twenty yard line the Duke quarterback dropped back for a pass, and barely before he had time to look around, Ronnie Banther burst through Duke's line on a dead run and lunged at him as he tried to avoid being tackled. But it was useless to avoid the rush from the defensive end, and the man went down on an eleven yard loss.

**ON THE NEXT PLAY** from

scrimmage the Duke quarterback, Bob Corbett, again went back for a pass, and again under a heavy rush from the State defensive line, threw an interception to Ralph Stringer, who returned the ball back deep into Duke territory, putting the game out of danger for the Wolfpack.

These types of plays have been typical of State's defensive game so far this season, and Banther is one of the strong links in that defensive line.

"Ronnie Banther is a very excellent football player and pound for pound is probably as tough as any football player around," comments head coach Lou Holtz. "He's doing a fine

job for us, even though he's been hampered somewhat by the twenty-five stitches he had in his hand after he cut it in a phone booth.

**RONNIE'S BEST** football is ahead of him," concluded Holtz.

Linebacker coach Jerry Kirk continued in the same vein as Holtz. "When Ronnie graduated from high school as a 165 pound linebacker, there was a question about his size," Kirk explained, "but not his desire or ability. Last year he was one of three freshmen who played well enough to earn a letter."

"He was a leader of the Rat Pack with his hard hitting, and towards the end of the season played defensive safety and

linebacker before he was switched to defensive end. We were hoping he would be able to gain more weight than he has so that he could play linebacker. So because of his lack of weight, he plays end, which is really just an outside linebacker," he continued.

"**RONNIE LOVES** football, and he loves to hit. He is one of the strongest players for his weight that we have. He makes up for his lack of weight in desire, strength and ability," commented Kirk.

Defensive coordinator Al Michaels, recognized as one of the top defensive strategists in the country, also has high praise for the sophomore civil engineering major from Brevard, N.C.

"Ronnie's adjusted very well to playing defensive end," he said. "He's a determined, dedicated player who plays where you put him, and plays his heart out for you, too. He's the type of player who really wants to play, who wants to hit people, which is what you have to do in order to play defense."

Ronnie is easy to coach, and anxious to learn. He graded out the highest of any defensive player against Duke. He's the daredevil type that plays with abandon on every play. We're all elated at the way he's come along," stated Michaels.

**IN THE DRESSING** room after the Duke game Ronnie made a few comments before heading for the showers. Blood was running from his right eyebrow as he packed his pads away.

"Whatever mistakes we made last week and tonight will be fixed and cleared up before the Clemson game," he said.

"My high school coach is coaching at Clemson now, so I know we'll have to be ready for them. He's a great coach. Offensively and defensively, we'll be ready," offered Banther.

before the elections of the 1974-75 officers are held. Please bring cards if you have them.

**CONTACT CLUB** Football: The Contact Club Football Team will travel to Charlotte Saturday to take on Central Piedmont at the Myers Park High School football stadium. Game time is 8 p.m. State defeated Western Piedmont last Sunday, 21-12, in their opening game of the season.

There will be a social hour

## More Sports

**LACROSSE:** There will be an open meeting of the lacrosse team and all students wishing to participate in lacrosse this year in room 11 of Carmichael Gym, Wednesday, September 25 at 4:45 p.m.

**SCUBA:** The Scuba Club will meet Tuesday, September 24 at 8 p.m. in the Brown Room of the University Student Center. All interested please attend. There will be a social hour

before the elections of the 1974-75 officers are held. Please bring cards if you have them.

## Intramural Scene

-Ray Deltz

Pitch and Putt golf, the year's first completed event, produced some outstanding quality, but often lacked quantity with many teams forfeiting matches. Owen I didn't forfeit any, and they came away with the residence championship. Don Chambers, Ray Warren, Greg Webb, Chip Kirkland and Keith Hilliard led the way for the dorm champs. Owen II took second, while Tucker was third. Blake McSherry captured the medalist honors with an 18 hole score of 50, four under par.

It took a playoff victory by SPE to nail down the Fraternity Pitch and Putt championship. SPE beat PKA by four strokes in order to claim top honors. Sigma Chi took third. Tommy Withers' 50 made him Fraternity medalist.

**THE FIRST MAJOR UPSET** IN Intramural football took place last week when Alexander upset heavily-favored Owen I, 7-6. Alexander scored their touchdown in the last quarter of the game and converted the extra point to gain the victory.

Wednesday, the action got so high-spirited during the Turlington-Owen II football game that it often resembled a war between rival gangs in Brooklyn. With Geno Melette hitting Bob Holden on two long aeriels for touchdowns and Rich Winslow for one touchdown, Owen II outplayed Turlington and came away with a 20-7 victory.

Gold, who may prove to be a surprise, scored their winning touchdown on a long pass to Kevin Fisher in defeating Tucker 7-6. Bragaw South, who looks to be a strong contender for the dorm title, walked all over Bragaw North II 32-2. In other games, Metcalf II walloped Metcalf I 38-12. Syme beat Sullivan II 20-7, Sullivan III beat Lee 13-0, Sullivan I downed Decton 19-13, and Bagwell forfeited their contest to Owen I.

**IN FRATERNITY ACTION** Delta Sig really rolled up the points by humiliating LCA 51-0. Surprisingly, the Delta Sig defense was greatly responsible for this one-sided affair. In particular, Langley Perry, a Delta Sig safety, seemed to have the ability to play the whole field. Munchkin, Delta Sig's tough-nosed offensive lineman, was able to open holes left and right.

APA had the ball on the one-foot line of Sigma Nu with thirty seconds left in the game and could not score. Sigma Nu came out on top 2-0. PKT relied on two safeties, one in the first quarter and one in the second quarter to defeat KA, 11-7.

SAE, who looks to be an improved team, knocked off Theta Chi 20-0. In other games, Farmhouse beat Sigma Pi 14-2, Sigma Chi walloped AGR 26-0, PKP beat Kappa Sig 6-0 and SPE held off PKA 12-7.



photo by Hedding

Ronnie Banther [52], last year a star on the Wolfpack's Rat Pack, starts for State at defensive end. Banther, a Brevard native, will really be looking forward to Saturday's 7 o'clock Clemson battle since his former high school head coach is now on the coaching staff of the Tigers.

## JV football

Makeup 'a flexible thing'

by Greg Drago  
State's fraternal family of football players is indeed a large order. Head coach Lou Holtz dresses some 66 athletes for each varsity game.

And while the varsity uses 66 players the junior varsity employs approximately 34 additional members. Those 100 players result in one huge stomach which someone must tickle, tease, and tantalize with various tidbits of food thrice daily.

Let's rid ourselves of the varsity athlete for the time being and concentrate on the unpublished, unloved Junior Varsity squad. Just what is this muscular group of unknowns referred to as the J.V. Wolfpack?

**IT ALL STARTED** with the change in a few rules by the National Collegiate Athletic Association. In 1972, the governing body for major colleges and universities decided to allow the use of freshmen in varsity athletics. In the past there had been a

varsity squad for upperclassmen and a freshmen team for the newcomers on campuses.

Since some freshmen would be participating on varsity squads, and since some players on the varsity team would not be playing continuously with the varsity status, a team was needed to take the place of the freshmen team. The underclassman program was retained, but instead of such a lowly name it was called "Junior Varsity."

The coach this year is Darrell Varsity, a player at State under Earle Edwards during the 1968-70 seasons. He has a fine articulation about him.

"**IT WILL BE** a very flexible thing," he stated about the composition of the squad this year.

Of course, there are many flexible things: rubber bands usually snap back, the Wolfpack defense may bend but never break, and diving boards always show their resilience. Moody elaborated: "The roster will vary from week to

week," he said. A player may be moved up because of a stand out performance, or perhaps an injured player has to be replaced. These things certainly change the makeup of our team."

For anything to exist it should have some ordained purpose. In the case of the junior varsity as related by Moody is "to have this squad participate in game situations and to prepare them for the varsity."

**HOWEVER, THE** junior varsity does more than merely play five advanced type scrimmages during the season.

"Although the team doesn't practice very much as the same unit, it does do a tremendous job running their teams' offenses and defenses," Moody stated. "This greatly aids the varsity. In this way, the JVs are an integral part of State's football program."

The junior varsity travels to Winston-Salem today to take on the Demon Deacons of Wake Forest at 3 p.m.