

Senator Tower Foresees Bright Republican Future

by Mike Haynes
Asst. News Editor

Senator John Tower, a Republican from Texas, told several hundred students and faculty members Monday night that the Republican Party did "all right" nationally in the Nov. 3 elections.

Referring to the usual loss of votes in an off-year election by the incumbent party Tower stated, "We did buck the usual trend for the party in control of the White House. In the next election year I think the odds for the Republicans will be much more favorable in the House."

He attributed part of his optimism to redistricting in some states, and he thinks the new districts will be more favorable for Republicans.

The Senator thinks the biggest factor in the recent election was the national economy. "Inflation is not under control," Tower stated, "But it isn't the fault of the Republicans, the Republicans do not control Congress."

Tower does feel optimistic about the country's economy in the future, however. "I don't think the economy is in bad shape. In '71 and '72 we will see an orderly growth in the economy," he said.

In the South, Tower said the Republican party will have to "go into the places where there are Democratic strongholds. Although we are not making the progress I wish we were making, we are making progress."

The senator feels sure his party will pick up votes in the South in future years. "People tend to identify, I think, with the party that represents their views instead of voting for the party their grandfather voted for," Tower stated.

Although the Republicans lost heavily in state elections, Tower does not think it shows a national trend. He thinks, "Most losses sustained were because of issues confronting the states. I refuse to let network commentators and journalists give me a dim outlook on the future of the Republican Party."

In a question-answer period after the lecture, Tower gave his views on several national issues. The staunch conservative thinks the 18-year-old vote will not adversely affect the Republican Party. "In 1968 the largest age group voting for Nixon was the 21 to 35 group. I believe the Republicans will get their share of the vote. Sometimes the most vocal students may not represent the campus. There are as many pro-Nixon as anti-Nixon students," Tower stated.

When asked his opinion on the Kent State tragedy Tower replied, "The lion's share of the blame should go to those who initiate violence in the first place."

Tower has a highly unfavorable attitude toward national third party movements. "People are now mature enough to realize that it is irresponsible to vote for third party candidates. The two party system is an integral part of our governmental system," he said. Comparing the Wallace campaign to "third party blackmail," Tower said, "In a national context it is extremely unhealthy to have three parties."



Republican Senator John Tower spoke at the Union Monday night.
—Photo by Allison

Charles de Gaulle Victim Of Heart Attack

PARIS (UPI)—Gen. Charles de Gaulle, who led France from near civil war in 1958 into an era of pride and prosperity, died of a heart attack Monday night while watching television at his country home in Colombey-les-Deux-Eglises.

The French government's announcement said De Gaulle, who would have celebrated his 80th birthday Nov. 22, suffered a heart attack.

There was no indication he suffered any illness before his death. Only last month De

Gaulle published the fourth in a planned six-volume set of memoirs and the few persons who had seen him since his forced retirement in April, 1969, said he appeared well and was industriously working on the remaining manuscripts.

De Gaulle took power in 1958 when the army was in revolt in Algeria and the country was near civil war. For 11 years he ruled as a strongman, a number of times going to the people in referenda to make certain he had their backing. Each time he won until the spring of 1969, when he lost what he considered a crucial referendum on administrative reform.

He carried out his threat to resign on April 28, 1970 and apart from two vacation trips abroad—one to Ireland and another to Spain—the former president never left his country home at Colombey-les-Deux-Eglises.

De Gaulle also withdrew entirely from French political life and refused to comment or make his thoughts known on current political affairs.

De Gaulle was the last of the Big Four World War II statesmen to die. The others were President Franklin Delano Roosevelt, the Soviet Union's Josef Stalin and Britain's Sir Winston Churchill.

French government officials said De Gaulle died at 7:30 p.m., 1:30 p.m. EST Monday, just as the news program was starting on the first channel of the state-run French television.

Earlier in the day, officials said, De Gaulle had been working on his still unfinished mem-

oirs. Degaulle, whose six foot, four-inch height and large nose made him a dream for political cartoonists the world over, actually served twice as leader of France. The first time was at the end of World War II, when he was both premier and president for two years.

With his only thought the glory of France, he tried to put the nation on what he considered the right road with the nationalization of mines, gas, electricity, the railroads and some factories but resigned after conceding it was impossible to bring together the conflicting views of the politicians.

Environmental Courses Offered

Environmental problems will be discussed in depth in two courses to be offered next semester under the Division of University Studies.

The Division of University Studies was set up last spring around the old Social Studies Department in order to expand its scope into new areas of current concern.

One of the courses, "Man and His Environment" (UNI 303) was taught for the first time this fall. It was so popular only 60 of the 90 students who signed up were able to get in.

This spring the course will be split into two parts. A student will be able to take just the two lecture sessions (UNI 303) for two hours credit. The third session (UNI 303A) will be a problem period with limited enrollment.

If the student elects to take the smaller problem session also, the entire course will count three hours credit.

The "Man and His Environment" course is taught by a team of professors drawn from

several departments. They speak on environmental problems as those problems relate to their areas of interest.

A brand new course will be offered next semester. "World Food and Population Crisis" (UNI 323) will be offered for the first time. It will also draw on a variety of professors through the team teaching method.

The professors will be from such departments as economics, food science, and politics. The course offers three hours of credit.

"Neither course has any prerequisites. They can give students an overview of some of these important scientific and intellectual issues," commented Cornish.

"We are the only academic department that belongs to no school on campus. These are the kinds of courses students want to take at this time. They're problem-oriented."

Both courses are listed in the Schedule of Courses Booklet under University Studies.

Beattie Sees Agriculture As Solution To Poverty

Dr. James Beattie, immediate past president of the American Horticultural Society, spoke here at a seminar held Thursday afternoon in Kilgore Hall.

Beattie, discussed the potential use of agricultural achievements as a means of eliminating poverty in stricken areas, the need to increase agricultural production in response to the population, the necessity to inform the American public about the contributions of Agriculture and the fact that there will be a need for cooperation between those engaged in agricultural professions and those in

non-agricultural disciplines.

With reference to the population explosion Beattie stated that there would be a continuing need to increase agricultural production in the U.S. in the coming 30 years. "Horticultural crops provide food and aesthetic beauty for the country and that by the year 2000 there would be a population of 380 million people in the United States.

This would amount to an additional 70 million families and they will look toward agricultural for food, housing, and clothing," stated Beattie.

Beattie stressed that the American public is not aware of the contributions of those who work in agriculture, nor are they aware of how cheaply the agricultural sciences are producing food.



There was a new excitement at the game Saturday as the Pack won. Everyone hopes the feeling will be carried through at Wake Forest.
—photo by Caram

ON THE INSIDE

- ... Election Day Preview
- ... Fuel Arrives For Reactor
- ... Kent State President Speaks
- ... State Takes Third In Cross Country

TODAY'S WEATHER

Partly cloudy today with some fog likely tonight. High today will be in the 60s. Chance of precipitation is 10 per cent today and tonight.

Cards Should Be Mailed

Room reservation cards for dorm residents will be distributed today or tomorrow. All students should send back the cards with payment before November 20. Students should pay by mail to avoid the long lines.

the Technician

A paper that is entirely the product of the student body becomes at once the official organ through which the thoughts, the activity, and in fact the very life of the campus, is registered. It is the mouthpiece through which the students themselves talk. College life without its journal is blank.
the Technician, vol. 1, no. 1, February 1, 1920

EDITORIALS

OPINIONS

Elections are usually decided By vote of a minority group

Last week's homecoming queen election is just one more example of how few a number of votes one needs to win a major campus election. With over 13,000 students on campus, only 2,000 voted for any of the 10 contestants; thus, the winner needed only approximately 300 votes to capture first place.

In the major campus elections last spring for Student Government offices, the turnout was not a great deal better. The largest voter turnout in history showed up for the presidential election, but still only about 15 per cent of the student body cast their vote for the eventual winner, Cathy Sterling. Our elected officials are not elected by a majority of the people, merely a majority of those who vote, which, more often than not, turns out to be a very small percentage of the student body.

After Sterling's election last year, petitions to remove her from office were not an uncommon sight on the campus, and a few even circulated early this fall. But these puny efforts to direct the leadership of the campus were much too late; those who opposed Cathy Sterling should have campaigned against her during the election and got those people out to vote who would vote against her.

Fall elections on this campus could be compared to off-year elections (such as the one just completed) on the national scene. Smaller turnouts can be expected than for the major elections, when the President and Treasurer of the Student Body, the Student Senate President, most Judicial Board positions, and most Senate representatives are chosen. Since there will not be as much interest in today's election as the one last spring or the one which will come up this spring, even a smaller minority will choose the representatives they want.

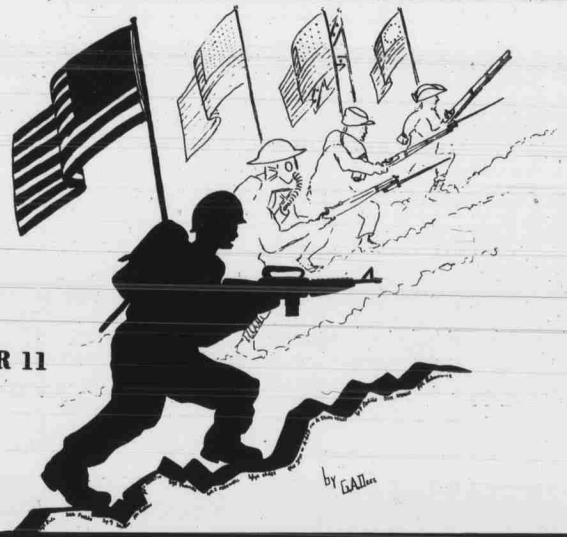
Today's election is primarily for the freshmen on campus; they will choose their spokesmen for the Senate and their members to the Judicial Board. Freshmen do not normally respond to campus elections any more vociferously than upperclassmen, even though they have not had any time to become apathetic with campus politics.

The election today will also contain an important Constitutional amendment, which must be approved by at least two thirds of the student body at large. If the amendment does pass, the new student at large representatives to the Publications Authority (which the amendment will provide) will also be chosen by the student body. For this reason, it is important that upperclassmen do get out to vote to elect the most qualified people to one of the more important elective positions on campus.

Finally, a word to the freshmen: give the elective positions a chance before you condemn them. Most of you have probably come from a high school which had a "student council," which was just that, a student council and nothing more. Although it is not the world's best legislature, State's Student Senate is more than a student council. It does have a sizeable budget to control, and it does determine policy on a number of campus issues. Also, the Senate seems to be overcoming some of the technical and parliamentary problems which have caused so much trouble in the past and have given the Senate such an infamous reputation.

Your vote, today will not change the world; no one vote ever does. But it may go a long way in deciding who will serve on the Publications Authority, or who will get a chance to voice your, and his, ideas in the Student Senate. Cast your vote today, and cast it wisely.

NOVEMBER 11



Things & Stuff

with eric moore

Those of you who read the article in the homecoming issue about the campus elite can thank this elite for having the student body elect a black Student Senate President in 1969. Perhaps the easiest way to get elected to office is to run without opposition in an election. This is what happened to me in the spring elections of 1969.

As political meetings began around the middle of March, Student Government President Wes McClure had a meeting at his apartment to talk over the possibility of who would run for what top offices in SG. Wes had already committed himself to Jim Hobbs for president and my senate experience plus my vociferous activity in senate meetings had made me a reasonable candidate for the office of senate president. The office of treasurer was "offered" to Thom Hege with support being given at the Student Party convention.

Hege decided that he wanted to run for senate president at the party convention. This brought about the situation that if I beat Thom for the senate president nomination, he would then run for the nomination for treasurer with all the support that could be given to him from the elite. Campus politicians used to have two parties to nominate candidates for major offices and for senate seats in campus elections. In 1969 the University party had just about folded so the Student Party was the only strong nominating force to be considered.

By the end of the evening, Jim Hobbs, Eric Moore and Maynard Ernest were nominated by the party to run for the top Student

government positions. The rest of the story is history.

These events only reinforce the principle that an apathetic student body produces a group of students who have unlimited power in strictly student matters. An apathetic student body also produces a group of students who are powerless in student-administration matters.

Contrary to popular opinion, the Student Body Judicial Board is a completely student-run organization. The only administrative "interference" occurs when students do not follow up on the responsibilities. The job of administering a judicial board is hard, time-consuming work and if enough students do not get involved, someone is going to get shafted.

Those that complain about student government are probably those people who did not vote in the campus elections or perhaps those who only voted themselves and did not get others out to vote. Jack Barger, Rick Rice in '69, and Cathy Sterling overcame "elite" endorsement and were elected because they had people who worked to get out the vote. There once was a time when the Student Party nominees for V.P. and treasurer were always elected. Mary Porterfield was elected because someone got over 300 people to vote for her, sometimes stopping their friends to go to the Union. When only 25% to 30% of the student body feels it necessary to vote, then the silent majority has no right to gripe about the elected officials. They had their chance. Perhaps they were too lazy and shiftless to exercise their right.

-30- THE STORIES BEHIND THE HEADLINES

Odds and ends from miscellaneous file

BY GEORGE PANTON

Today -30- looks at some more odds and ends from the miscellaneous file.

Assistant Trainer Chester Grant was presented keys to a new Oldsmobile at Saturday's homecoming football game. However, the word is out that the car was just for show, and Grant will get money instead. Ah, the world of illusions.

Less than 2,000 persons voted for the homecoming queen last week. Members of Blue Key, the sponsoring organization, had hoped for a larger turnout and were prepared for nine to ten thousand voters. With 10 candidates in the running, it took somewhere in the neighborhood of 300 votes to be declared a winner.

Fame of Mary Porterfield's election as homecoming queen has spread across the country. *The Technician* received a phone call yesterday from Fresno State College in Fresno California requesting information and a picture of Mary.

One can tell that basketball season is fast approaching by the mail *The Technician* receives from kids in Wilson. Last year *the Technician* sent a boy in Wilson a basketball program, some pictures of his favorite players, and a PACK POWER sign. For the rest of the season, we received letters like the following:

Dear Mr. Technician,

I've heard from friends that you give sports information out on the Wolfpack of N.C. State. If so,

Page 2 / the Technician / November 11, 1970

please send me anything you have. I back the Pack on radio and T.V. but I haven't seen them play yet. Wish them good luck from their fans in (Wilson). My address is below.

Steve Downing
506 Pike St.
Wilson, N.C. 27893

A new publication has appeared on campus. *In the Shadow of the Monolith* is the publication of the Science Fiction and Fantasy Society of Raleigh. Persons interested in joining the society should contact Betty Stinson at 755-2710.

Quote of the Day: FCC Commissioner Nicholas Johnson has said: "We learn that the greatest measure of happiness and personal satisfaction is consumption-conspicuous when possible. 'Success' is attained in human relations by the purchase of a product... What do you do when life fails to throw roses in your hedonistic path? You get 'fast, fast, fast' relief from a pill—a headache remedy, a stomach settler, a tranquilizer, a pep pill or 'the pill'... You get a divorce or run away from home. And if, 'by the time you get to 'Phoenix,' you're still troubled, you just 'chew your little troubles away.'"

Last week -30- had a Wilson chicken salad sandwich at the snack bar in the Archives and History Building. It is amazing what fond memories return when

onehasto chew the little chunks of chicken and celery in the Wilson sandwich compared to the mush of the Slater chicken salad sandwich. Ah, but for the good old days...

-30- had a tour of the new library tower Monday. The new facility will be an added bonus to the student body. Seating will almost triple from the present building when the total library is complete. The building is scheduled to open sometime in January, and the stacks will be open to all students.

The contractor is now making last minute alterations to the building. Several weeks ago the exterior of the building was sandblasted, resulting in great expense to the contractor. All of the glass was damaged during the sandblasting, and the contractor is in the process of replacing the glass. Also, the contractor is trying to get the floor level. Some of the floors have definite hills and valleys.

From Seminar Research: In 1831 following the Nat Turner slave insurrection in Virginia, students at the University of North Carolina organized into a militia unit for protection and asked the governor for arms. With all the unrest on college campuses today, maybe students should organize again and fight little wars with the National Guard. Cathy Sterling would make a good field general leading the troops across the brickyard.

Student Senate President John Hester wants to be mentioned by -30-. So here it is: John Hester.

How 'Student' is State's Student Government?

by Cathy Sterling
Student Body President

Though this column seems to be plagued by interruptions, today it will once again return to the Association of Student Government's six point definition of student power. Two columns have already discussed how our Student Government compares to the first point, "Student Government must have an independent source of income free from arbitrary administrative control." Now on to the second and third points.

2. Student Government must have the authority to promulgate student rules and regulations. If you don't govern students, who do you govern?

3. Student Government (through a judicial system) must be the judge and interpreter of such student rules. You don't govern by establishing policies to be judged and enforced by others.

Who Makes The Rules?

How State rates on these two points is more complicated than it appears on the surface. Student Government appears to make student rules and regulations, which are defined by the Student Body Code and Student Law. Any violations of the Code are tried before the Judicial Board System. Since the creation of the Office of Judicial Affairs, all violations of the Code have been tried within the Student Judicial System which is composed entirely of students. The Chancellor has often made the statement with pride, that no student discipline cases have ever come before him. So on the surface it appears that Student Government does make and enforce student rules and regulations.

But the real clue here is that Student Government is not the only body making and enforcing rules and regulations that directly affect student behavior. It would be helpful here to define just who does have the authority to make such rules and regulations. According to the Trustee Code of 1970, the Trustees "shall have the power to make such rules and regulations for the management of the University as they deem necessary and expedient." In addition, "it shall be the duty of the Chancellor in each of the component institutions to exercise full authority in the regulations of student conduct and in matters of student discipline in that institution. In the discharge of this duty, delegation of such authority may be made by the Chancellor to faculty committees and to administrative or other officers of the institution, or to agencies of student government, in such a manner and to such extent as may be deemed necessary and expedient."

SPEED HUMPS

by Bob Salvin

Officers Bartles, Blevins and Woodruff of the Campus Security Force in a speech to the Student Senate last Wednesday night pointed out that the "campus cops" provide numerous services to the campus community other than riding around ticketing and towing unregistered automobiles.

One of their most important services is the transporting of moveable, injured students to the infirmary in their specially equipped station wagon. The officers expressed concern however about being pelted with water balloons while carrying an injured student down on a stretcher or even worse, finding that someone has let the air out of the tires. (If you're sick enough to be taken to the infirmary, you don't want to wait around for someone to come over with an air tank.)

Another area of concern to them is vandalism and theft. While traffic signs may make nice room decorations, the removal of a stop sign may cause a serious accident. In fact, such a theft on a midwestern university campus led to an accident which resulted in the death of a family of four. They had two main points to make about preventing thefts:

1. Lock it up—this means lockers in the gym, your room, and your car. It is a good idea to get a set of anti-theft door lock buttons. These make it impossible to get into your car with a coat hanger.

2. Be observant—if you see someone window shopping in a parking lot, get a good description of him, then call the Campus Police.

The Campus police also work with the city police in investigating accidents on the campus. In their speech, they made the point that in "fender bender" accidents, it is wise to call the Campus police instead of our friends downtown. The Campus policeman will probably help to arbitrate the matter between the drivers thus saving a moving violation ticket, increase in insur-

(continued on Page 4)

the Technician

P. O. Box 5698 | Raleigh, N. C. 27607

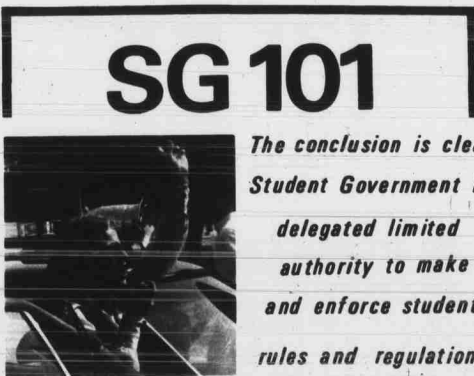
Editor Jack Cozort

Managing Editor . . . Richard Curtis
Consulting Editor . . . George Panton
News Editor Hilton Smith
Sports Editor Stephen Boutwell

Features Editor G.A. Dees
Advertising Manager . J. Hutcherson
Circulation Manager . . Joe Harris
Photo Editor Ed Caram

Asst. News Editor: Mike Haynes / Staff Writers: Craig Wilson, Nancy Scarborough, Janet Chiswell, George Evans, Wayne Lower, John Walston, Perry Safran, Marty Pate, Danny Danklefs / Typesetters: Henry White, Julie Coates, Susie McPhail, Jerry Galigher / Compositors: Jimmy Wright, Roger Harris, Ray Dudley, Lewis Price, Doris Paige / Photographers: Wayne Stogner, Charles Allison, Al Wells, Allen Cain / Layout: Rusty Markey, Larry Bowling / Ad Agents: Skip Ford, Bill Davics, Andy Barker, Greg Hoots, Marty Welch, Rufus Dalton / Proofreaders: Tom Whitton, Wayne Ruth / Astrological Consultant: Jane Cromley Curtis.

Represented by National Advertising Service, Inc., agent for national advertising. Offices are located in the basement, King Building, Yarbrough Drive, Campus. Mailing Address: P.O. Box 5698, Raleigh, North Carolina 27607. Second Class Postage paid at Raleigh, North Carolina, 27607. Subscriptions are \$5.00 per academic semester. Printed at the North Carolina State University Print Shop, Raleigh, North Carolina.



The real or root authority does not lie with Student Government. What authority it has, is delegated authority. Nor does Student Government carry total delegated authority for making and enforcing student rules and regulations. There are several other instances where others exercise authority to make rules and regulations affecting student behavior. The most obvious of these is the Disruptions Policy.

Disruption Policy
The Disruption Policy is a set of rules and regulations concerning student behavior in the disruptive sense and also includes a system of enforcement, which may or may not include the Student Judicial System. A student found in violation of the Policy "shall be subject to prompt and appropriate disciplinary action, which may include suspension, expulsion, discharge or dismissal from the University." The Chancellor does have the option to refer violations to an already existing judicial body, one of which is Student Government, but this is not a requirement.

During the summer, when the Policy was being reviewed and revised, all of the student members to the Consultative Committee urged that the Disruptions Policy be dropped, in return for each of the Student Judicial Systems on each of the campuses adopting a student disruptions policy which would take care of the student cases occurring on that particular campus. Such a policy could have been easily included in our Student

Law. But, as you see, our suggestion was not taken, and we have a policy on student behavior that is neither made nor enforced by students.

A second example is the Visitation Policy, (better known as the Open House Policy on this campus). Dorms and fraternities are allowed to make many of the rules and regulations concerning the behavior of the residents, but in the area of visitation, the authority for the making of the basic rules lies elsewhere. During the summer, President Friday's administrative council made a policy on visitation which set up the basic rules which were to be enforced by the various student judicial systems. This policy has been challenged in the past month by students.

The issue of whether students, the very ones who have to work under these rules, should be given the authority to make all the rules and regulations concerning visitation in the residence units, was brought to the Consultative Committee for a solution to be recommended to President Friday. The student case was. Again, this is an area which affects students only, and we would have the authority to make and enforce student rules and regulations. The decision of the Consultative Committee was a compromise and did not reflect clearly the principle that students should be given such authority. Women's hours is another example along the same lines as visitation. Though the girls live in the dorms, they are not given the authority to make the basic rules about their hours (if such rules are even needed), but they are expected to enforce the basic rules.

Judicial System Change

Even now our own Judicial System has just had another procedure added that was not of its making, nor does the procedure include students. The letter from Chancellor Caldwell informing us of the new procedure explains that the Chancellor has delegated authority for student discipline to a "Faculty Committee, which will hear cases on appeal by a student from the judgement of the Student Court." The Faculty Committee is made up of five faculty members appointed by the Chancellor, and includes no students.

The conclusion to be drawn from these examples is clear. Student Government is delegated limited authority to make and enforce student rules and regulations. Many other non-students also make student rules and regulations, some with their own enforcement procedures, some expecting the Student Judicial Systems to enforce non-student promulgated rules and regulations.

Looks like we strike out on this point too.

LETTERS TO THE EDITOR

Students Disappointed

Dear Miss Sterling:

We are very disappointed with the representation you gave us concerning the open house policy for the consolidated university. From our House Council representative, we learned that you gave your—and thus our—support to a policy which requires a sign in and out policy for all first semester freshmen. Thus, male students would be required to meet curfews just as female students must. By giving your support to this policy, you have tried to advance your own personal campaign for a minority opinion and have totally disregarded your duty to voice the views, opinions, and desires of the students of this campus.

According to the policy which you support, certain residence halls will be designated as "open" halls, to have regular, specified open house hours, varying from 24 hour open house to weekend open house to no open house at all. Since the number of male residence halls far exceeds the number of female residence halls, the male residents obviously will have a much wider variety of open house situations from which to choose. Thus, despite your desire to achieve male and female equality, you have succeeded in taking a position which will once again put the female residents in an unfortunate state of affairs. Besides this, the student will have absolutely no option as to the open house hours he or she desires, because the decision will be left entirely up to the parents (at least until the student reaches the age of 21).

Having never lived on campus yourself, you couldn't possibly understand the likes and dislikes or the feelings and opinions of on-campus residents. So, we are writing this letter to tell you how we feel. We like the open house policies we now have. State has been very liberal about the whole thing and we want to keep things as they are. Our Inter-Residence Council has succeeded in establishing good relations with our administration and we see no reason to upset everything just because another part of the consolidated University is unable to do the same. We want each campus to have its own policy concerning open house rules.

We elected you to represent us and our opinions, not to use your office as a means to advance your own opinions concerning Women's Liberation. We shouldn't have to ask you to do what we elected you to do—represent the students of NCSU!

10 Members—Suite 602 Metcalf

SSS Policies Questioned

To the Editor:

A situation has arisen which we feel should be

brought to the attention of the students on this campus. Once again the management of the Student Supply Store has trampled individual rights on the pretense of projecting an image it obviously feels is vital to the store's operation. In the belief that the Student Supply Store should convey to its customers a "respectable" image and that "long hair" is not in the realm of respectability—the management has handed down a discriminatory decree to its employees.

In actions of the past week the management handed out ultimatums to three employees to "get haircuts or not come back to work the next day." One had been with the store for over two years and was one of its most respected employees. This employee chose to stand by his principles, rather than capitulate to the irresponsible demands. The remaining two, due to financial circumstances, had no choice but to get haircuts.

The Student Supply Store is a University operation. Its success depends to a large extent on student patronage, therefore it would seem that student influence should be a factor in determining store policies. Based on actions of the past week however, there is serious doubt whether student influence means anything. The management decided, somewhat irresponsibly, and without due consideration to today's standards, that hair length should be made criterion by which to project that image.

We feel that the Student Supply Store should project an image of the 1970's and abolish its archaic standards of the present. We ask that the management of the Student Supply Store relax their strong-arm tactics and project the kind of image people really want—Honesty and Fairplay.

Grant Godwin, Senior, Soc.
Michael Green, Soph., FMM
Johnnie Hall, Junior, Textiles

Sterling vs Republicans

To the Editor:

In Wednesday's "Technician" Cathy Sterling used her column to attack the Republican Party because they "welcomed... the potential of student disruption" and "made repeated attempts to inflame the 'longhair' student element by confiscating their tickets." She should be the first to realize that trouble would almost surely have resulted if everyone had been admitted indiscriminately. Her rash statements were made without reason or evidence to support them. Her method of grouping all Republicans into a deceptive enemy of the students is similar [sic] to the logic or illogic used by people who use long hair or beards to identify "Freaks" and "Communists."

Larry Bodenheimer
EE

**LAST DAY of
BIG CELEBRATION**

Madness! Madness!

CHRISTMAS CARDS

Imprinted Free

WATCH BAND CALENDARS

(Dec. 1970 Thru Jan. 1972)

(\$.79—One Day Only at this Price)

EVERY POSTER ON SALE

INCLUDING SPECIAL GROUP

FOR 50¢ (Last Day of Poster Sale)

DECEMBER PLAYBOY

NOW ON SALE

BIG HOLIDAY ISSUE

COLLEGE NEWS CENTER

ACROSS FROM THE LIBRARY
OPEN TIL 9:30 EACH EVENING
2508 Hillsboro St.

**VOTE
GOLDBERG
FOR FRESHMAN
PSAM SENATOR**

FOR NCSU STUDENTS ONLY!!!!



**DIAMONDS
from LAND'S**

A Very Special Selling of
Fine Quality diamond Rings

Compare
Our
... Quality
... Styles
... Size

1/2 Carat \$100
Reg. Price 144.95

1/2 Carat . . \$160
Reg. Price 225.50

1/2 Carat . . \$290
Reg. Price 437.95

Store Appointment
Call 832-3751

LAND'S

JEWELERS 137 Fayetteville

You must present
NCSU ID cards
for above prices

...Due To Hundreds Who Couldn't Get In
We Are Bringing It Back !!!

**Trip INTO THE FANTASTIC WORLD
NOTHING IS REAL! OF THE BEATLES.**



**The Beatles
"Yellow
Submarine"**

Admission \$1.50

1 ACRES
of FREE
PARKING

TURN ON!!!

**Cardinal
of North Hills**

**LATE SHOW
11:15 F-R-I-D-A-Y**

Campus Crier

Lt. Colonel Gaiter, Commander of the 774 Transportation Group at Fort Bragg will speak on "Handling Problems with the Black Soldier" at 7:30 p.m. at the Union Theater. The Pre-Vet Club will meet Thursday at 7:30 in 130 Scott Hall.

NCSU Student Senate will meet tonight at 7 p.m. in the Union Ballroom. All students and faculty are urged to attend.

Golden Chain will meet today in room 254, Union.

Riddick Rat Race will be held on Nov. 15 at 10 a.m. in Riddick Parking lot. A Gymkhana for students sponsored by Engineer's Council and Corvettes International.

Dr. Abraham Holtzman, Poli. Sci. Professor at NCSU, will speak on Nov. 16 at 8 p.m. in Sullivan Dorm Lobby on recent national election results—exactly what it all means—FREE to all public.

SPEED HUMPS

(continued from page 3)

ance, possible loss of license, and a chance to let the judge arbitrate it for a fine plus the cost of court.

In cases where the city police is called to investigate an accident on the campus because of personal injury (they follow ambulances), damage over \$100.00, or you just sideswiped the mayor's car, it is a good idea to call the Campus police first as they will advise the student, make sure that his rights are protected and see to it that he is not abused because he is a student and/or has long hair.

NEXT . . . What happened during the elevator incident? How did they tow away the Secret Service?

NCSU Collegiate 4-H Club will meet tomorrow in 310 Ricks at 7:30 p.m.

Co-ed Luncheon will meet today at noon in the Union.

All persons interested in forming and/or joining a Rotaract Club are invited to attend a meeting in 129 Harrelson Hall at 7:30 p.m. on Wednesday November 18. Rotaract Club would be a completely new service club at State, would be sponsored by Rotary International, and would be open to all students enrolled at N. C. State. For further information, call Sadler Love at 755-9066.

RECREATIONAL TRAMPOLINING: Supervised recreational trampolining for all interested students in Carmichael Gymnasium at the following hours:
4-6 p.m. Monday thru Friday
7-9 p.m. Monday and Wednesday
2-4 p.m. Saturday and Sunday

Fourdriner Society will meet Thursday at 7 p.m. in Robertson Lab. Dr. R. P. Singh will speak on "Future Trends in Pulp Bleaching."

NCSU a no-talent school? Don't count on it. Take your original poetry, short stories, essays, and drama to either the English office in Winston, or the reception desk in Metcalf dorm. Student contributions only. Include name and address. *the whole thing*, a literary magazine for NCSU.

**VOTE TODAY
for
PICHIE WOOLFOLK
Fr. Engineering Senator**

Intramural Basketball Officials needed. Sign up at 210 Carmichael Gymnasium. A clinic will be held in Room 211, Carmichael on Wednesday, Nov. 11 at 8 p.m. Work will be available Monday-Thursday evenings from Nov. 16-Feb. 17.

SIES will hold a meeting Thursday at 7 p.m. in 222 Riddick. NCSU Student Senate will meet tonight at 7 p.m. in the Union Ballroom.

**General Electric's been
building bigger jet engines
for 30 years.
When are they going
to start building cleaner
jet engines?**

Not many people know that General Electric started building a jet engine in 1941. America's first jet engine.

That jet produced only 1200 pounds of thrust.

Our newest jet, for the DC-10, produces around 50,000 pounds of thrust.

In the early days of jet aviation, the important thing was thrust.

But suddenly our skies are filled with jets. And, suddenly, jet pollution is a major problem.

General Electric tackled it head on when building the DC-10 engines. And we accomplished two things.

When you see the DC-10 take to the air, you'll see no black marks against the sky. Because the engines make virtually no smoke.

Of course, there's more to jet exhaust than just smoke. Our goal is

someday to make jets run totally clean.

Another problem with jets is noise. If you've ever lived anywhere near an airport, we don't have to tell you that.

General Electric has been working on noise, too.

GE was chosen by the federal government to help solve this problem for the aviation industry. At present, we know of no way a powerful turbofan engine can be made noiseless. But we've made progress in that direction.

The DC-10 engines, for instance, are quieter than any jet engines on the passenger planes of the Sixties. Quieter, even though they're more than three times as powerful.

We have more work to do before we'll satisfy all the people concerned about jet pollution, ourselves included. But because we've been working at it since the mid-Fifties, before it was widely recognized as much of a problem,

we've already crossed some important hurdles.

Why are we running this ad?

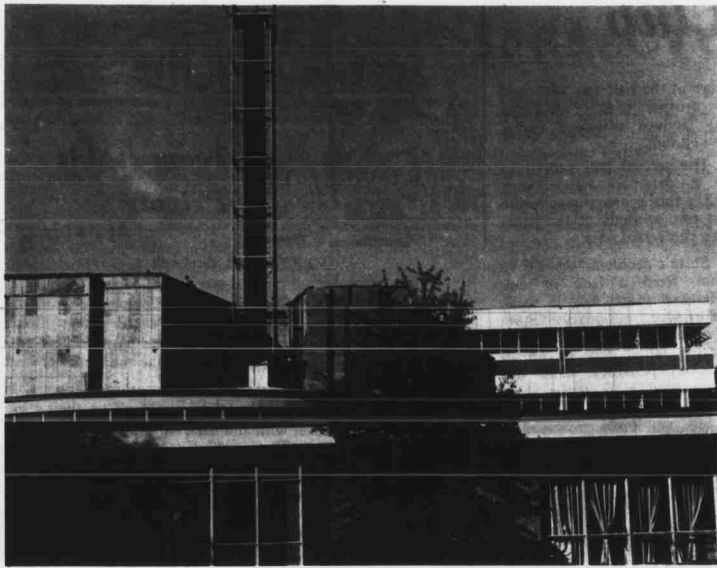
We're running this ad, and others like it, to tell you the things General Electric is doing to solve the problems of man and his environment today.

The problems concern us because they concern you. We're a business and you are potential customers and employees.

But there's another, more important reason. These problems will affect the future of this country and this planet. We have a stake in that future. As businessmen. And, simply, as people.

We invite your comments. Please write to General Electric, 570 Lexington Ave., New York, N.Y. 10022.

GENERAL ELECTRIC



Over \$175,000 worth of uranium fuel arrived last week for State's new nuclear reactor. Completion for the reactor is scheduled for January.

State's Nuclear Reactor Receives Uranium Fuel

Uranium fuel for State's one-million-watt PULSTAR reactor now under construction on the university campus has arrived on the campus.

It has been unpacked, inspected and stored. "Arrival of the fuel was a major step in the assembly sequence of the new PULSTAR reactor to be used for education, research and service," said Prof. J.F. Bohannon, project engineer for State's nuclear engineering complex.

The fuel elements—four per cent enriched uranium-oxide in the form of a ceramic—were contained in 36 heavy drums shipped by truck from the Atomic Fuel Division of the Canadian Westinghouse Company in Ontario.

For five continuous hours, a team of NCSU nuclear engineers and technicians unpacked the drums and inspected the fuel assemblies, each containing 25 fuel pins 30 inches long. They

were then stored in special compartments under the floor of the room that houses the present 10-kilowatt nuclear reactor.

"The unloading procedure of the new reactor's fuel was a stringent quality control and assurance inspection by this University prior to use of the fuel," said Prof. Bohannon.

He pointed out that the fuel is identical in form as that used by power plants now being built by public utilities in North Carolina.

Completion of the new PULSTAR is set for early January. When placed into operation, the new reactor will have a steady state power level of one million watts with a peak pulse power of 2200 million watts.

Funds for the fuel were based on a two-year grant made to the University by the nuclear education and training division of the Atomic Energy Commission, said the project engineer.

Kent Charges Called Inaccurate

WASHINGTON (UPI)—The president of Kent State University said Monday a special grand jury report on the killing of four students there threatens academic freedom on every major American college campus.

Universities and Land Grant Colleges.

A court order forbidding witnesses from commenting on the grand jury report was lifted

last week by Federal Judge Ben C. Green. He ruled that the events which occurred at Kent State "are a matter of national, social, political and moral concern and debate."

Robert I. White made the charges in his first public statement on the Portage County Ohio grand jury's decision Oct. 16 to indict 25 persons and virtually clear National Guardsmen of blame for the tragedy last May.

"In my opinion, the grand jury report was inaccurate, disregarded clear evidence, and, if pursued in all its nuances, would eventually destroy not only Kent State but all major universities in America," White said.

The university president specifically took exception to the grand jury's finding that Kent State officials were largely responsible for the slayings because they allegedly followed a policy of general permissiveness, failed to control radical elements and over-emphasized the right to dissent.

"We hold no brief for law-breakers or for disrupters," White said. "But neither is the academic community a place where ideas—no matter how offensive—are to be suppressed."

White acknowledged that his administration could be faulted for some of its past actions.

"But the directions of the grand jury findings transcends the Kent State administration," he said. "The charges are applicable to all higher education. In fact, the constitutional safeguards of American democracy are themselves under fire."

He made the comments at a news conference before attending a meeting of the National Association of State



Vest, Circa the 1970's.

Like the threads good old Robin wore while socking it to the Sheriff of Nottingham. Today it's yours to flaunt in fulled cloth of 100% wool from "down under." Girded by a matching belt. Buttons right up to the neck. And you can do your own thing with color. \$20.00

The Stagg Shop, Ltd.

2428 Hillsborough St.

TRUCK ON DOWN
TO
SHRUDE



YOU
MOTHERTRUCKERS



SHRUDE
M.F.
holding CO.
201 OBERLIN

* mfg. only by H-K Corp., Atlanta, Ga.

AMERICAN ROAD RACE OF CHAMPIONS



It's the one race of the year when more than 400 of the country's best Sports Car Club of America drivers meet wheel-to-wheel, rain or shine, to decide national champions in 22 classes. Colorful, highly-tuned machines ranging from agile, open-wheel Indy-type formula cars to rumbling Corvettes and Camaros in 16 flat-out, gear-grinding, tire-smoking runs for the checkered flag and the Gold Medal.

NOV. 25-29

For ticket information contact:

Joe Hauser
2805 Brigadoon Drive, Apt. 3
Raleigh Phone 834-2943

ROAD ATLANTA

Road Atlanta is located 40 miles northeast of Atlanta on State Route 53, just five miles west of I-85 (near Gainesville).

ECU Romps Over Contact Club

The State Contact Football Club lost its fourth consecutive game Saturday to the East Carolina Football Club, 42-2.

East Carolina romped through the first half scoring almost as will to push their record to 3-2. The State club is 0-4.

SPE Wins Frat Title

The Fraternity football season drew to a close Wednesday afternoon with SPE winning its third straight championship by overwhelming Delta Sig., 19-0. Led by the passing of Ron Harrell (later selected the most valuable player) and a ferocious defense, SPE scored

early and was never headed. Harrell completed three touchdown passes and the defense intercepted five Delta Sig. passes. This victory forged SPE into the lead in total points for the season. Delta Sig. is second, and Sigma Chi third.

The game opened with State kicking off to ECU and downing the runner on his own two-yard line. Two plays later, Steve Mangum fell on the ECU quarterback, Denny Lynch, in his own end zone for the safety and State led, 2-0.

East Carolina roared back with Lynch filling the air with footballs, scoring on a pass to his brother Mike. ECU ran a two point conversion to lead 8-2. They were never headed.

On one play, ECU linebacker Bob Pronti, stole the football from State quarterback Dennis Musser and ran 45 yards for the score. The

score at the half was 36-2, and the prospect of State mounting any serious offensive threat looked dim.

The second half proved to be a defensive battle with ECU's final score coming in the last two seconds of the game on a three-yard pass.

State's problems seemed to stem from a lack of any offensive threat and a weak defensive secondary. State advanced only once to within scoring range only to be set back by penalties. State was intercepted four times, East Carolina none.



Team Holds Private Meeting

By Stephen Boutwell

There have been a lot of gripes and complaints from the football squad this season. Most of them center around Coach Earle Edwards, mainly because the team has been doing a poor job this season. As coach, Edwards must take the brunt of it all.

Friday night, the team held a private meeting to discuss the vital situation at hand. They decided to hold off on their gripes until the season was over with and then see what can be done. At the time three games remained on the schedule.

Some merit evidently stemmed from that meeting, for the club decided to finally play the way they were expected to since the very beginning of the season. They put on, by far, their best offensive effort of the campaign.

Unable to come up with a touchdown in 13 consecutive quarters, the Pack, behind the quarterbacking efforts of Dennis Britt, finally came to life and scored not one but three TDs, two of them through the air.

The passing aspect of the game was balanced by a running attack led by Jim Hardin, Paul Sharp and Britt that netted 197 yards.

But then again you don't win on offense alone (with some exceptions such as the Georgia-South Carolina game two weeks ago when over 90 points were scored). Van Walker came up with two key interceptions, one that led to the deciding touchdown and the other that choked off a Virginia rally rate in the game.

All Edwards has talked about since the game is that final interception and one can see why. Without it, the game would have spelled defeat which would have been disastrous in more ways than one.

But as in most of the games this year there were some oddities. Many concern the tactics used by Edwards. One in particular this weekend was: Why did we punt with third down and five to go, and we weren't deep in our territory? In fact, it wasn't even a quick-kick.

But even stranger was the fact that State was nine for 13 in converting third down plays to first downs or TDs. State was also good on a fourth down play too.

It seemed as if Coach Edwards was coming out of his conservative ways in some respects and not in others.

Two games remain on the schedule, the Pack travels to Winston-Salem for a deciding match with the Deacons. State could very well decide who will be conference champs in this one, if they decide to. The final game is with a talented Tulane team in New Orleans.

If the meeting Friday night is worth anything, the club could finish the season 5-5-1. For the skeptics, it isn't highly impossible. It will all depend on the overall attitude of players and coaches.

Feelings (and signs by the fans such as the one at the Virginia game) concerning the expulsion of Edwards will have to be dropped by the wayside for the time being.

Vitally Concerned About Student Publications

Elect

BOB SALVIN

Publications Board

APPLE CIDER

BY RESERVE ORDER ONLY



\$1.50 per gal. ^{TRADE}

Call 832-1897
Pick up Cider in back of Kilgore Hall Sat., Nov. 21 10 am-6 pm

Cheaper in Quantity

HORTICULTURE CLUB

Engineers! Would you rather start your career in management and practice engineering instead of starting in engineering and working up to management?

Management Now--
Not Later at **Charmin Paper**

A SUBSIDIARY OF THE PROCTER & GAMBLE CO.

Experience in papermaking is not necessary; we'll train you. Within 6 months after you join us, you will be given full charge of an engineering staff section or direct responsibility for a production unit or department.

We will interview at the Student Placement Office

Monday, November 16 for Engineers
Tuesday, November 17 for Pulp & Paper Science Tech.
Tuesday interviews will be at the Pulp & Paper School

BS and MS degrees in ChE, CE, IE, EE, ME, Pulp and Paper Technology, and MBA's with BS in any technical discipline. We have opportunities in:

- MANUFACTURING PLANT MANAGEMENT
- PLANT MAINTENANCE MANAGEMENT
- PRODUCT ENGINEERING
- PLANT INDUSTRIAL ENGINEERING
- PLANT CHEMICAL ENGINEERING

Already 10th largest industry in the United States, papermaking is exploding with new growth. And Charmin, as a producer of household paper products only, is a pacesetter in the segment that is growing 3 times faster than the total industry!

Charmin's entire operations are alive with new methods, new ideas, new processes, new product concepts—and Charmin engineers are in the forefront of these developments. Now, as our marketing area expands beyond 75% of the U. S. population, we need more engineers capable of bold new thinking.

Our rapid growth, combined with a practice of promotion from within, provides outstanding advancement opportunities. We must significantly increase our management organization in the next few years, providing opportunities at all levels in the organization. Your progress will be closely followed, since our technically trained management group is comparatively small.

Choice of four locations: Green Bay, Wisconsin; Cheboygan, Michigan; Mehoopany, Pennsylvania (near Scranton) or our new Cape Girardeau, Missouri plant. If hunting, fishing, or skiing are hobbies, your choice of locations can put you into an area rich in resources for your favorite sport.

Sign up at the Placement Office now, and find out more about a future with us. We're interested in talking with you even if you have graduate school plans or a military obligation. Note: You must be a U. S. citizen or have a permanent immigrant visa.

An Equal Opportunity Employer — M/F



Yes, management now—not later!

Paper is Big Business! Keep a leader!

You can grow with Charmin!

Sign up for an interview!

Thompson
SALVAGE DIVISIONS

USED PARTS

We Buy Wrecks

RALEIGH AUTO PARTS

US 70 EAST

772-0566

RALEIGH
BLOOD CENTER

200 E. Martin Street

834-9611

Age 21 and Over

Elect

DEBBIE MOORE

Freshman

Ag—Life Senator

the **Shrimp Boats**

TAKE HOME AND SELF SERVICE DINING

PHONE AHEAD FOR FAST SERVICE 834-0608
1634 NORTH BLVD. 833-8850

ASK FOR THE ALL YOU CAN EAT SPECIAL FOR \$1.39

FISH and CHICKEN EVERY DAY

Hayes Just Misses Crown; Team Effort Good

All-star track performer, Gareth Hayes, had his best time ever Monday in the ACC cross-country championships, but it was all in vain as Bob Wheeler of Duke edged Hayes to take the individual honor.

Hayes, for the second year in a row, finished second in the championship meet held in Chapel Hill. His time was 24:49, beating his old mark by 11 seconds. Last year his time in the meet was 27:04.

Wheeler ran the course in 24:48.3 in pacing the Duke Blue Devils to the team title with 42 points. The win stopped the domination of the

meet by Maryland at six. The injury riddled Terps finished fourth with 77 points.

State was a surprising third in the championships with 71 points, just five behind runner-up Carolina.

Freshman Jimmy Wilkins finished a surprising third with a time of 24:57, and Neil Ackley was tenth across the finish line in a time of 25:39.

Other scores for the Pack were Sidney Allen (20), in at 26:30, and Rick Yates (36), finishing the course in 27:50.

The finish was by far the best for State in eleven years. The 1959 track team also

finished third.

"As a team, we put everything together," said a happy Coach Jim Wescott. "I was very pleased with our front runners and with our finish.

"Gareth ran real well, it was a fine performance. He came so close to winning it. He has a lot of confidence.

"Wilkins ran exceptionally well. He has really come into his own. Before the race he had convinced himself that he could run. He had a personal goal to beat Waldrop (winner of last week's State championship) and he did. (Waldrop finished fourth behind

Wilkins).

"Jimmy's previous best time was 25:47 against USC, so he showed he could run.

"Ackley, Allen, Yates did real well also. All had fine performances." All runners clipped seconds off of their previous times to really show how much they wanted to run in this event. Toby Lee, another finisher for State, has been suffering from a bad ankle injury and was unable to do as fine a performance as he is capable of running.

"I'm really proud of our club," Wescott went on. "The whole team really broke

through and did just a fine job."

For senior Hayes this was his last conference race. He will

be able to run, though, in the NCAA Championships to be held at Williamsburg, Va., November 23.

MEXICAN FOOD Authentic Texas Style
before or after the game or anytime

The Taste Treat... That Can't Be Beat!

TIPPY'S TACO HOUSE

2404 OLD WAKE FOREST RD.
Midway between Bellline & Downtown Blvd.
828-0797
Open Sun. - Thurs. 'Til 9:30
Fri. & Sat. 'Til 11

BACK THE PACK

We do not loan automobiles

McNabb's

TEXACO

The College Student's Complete Service Station

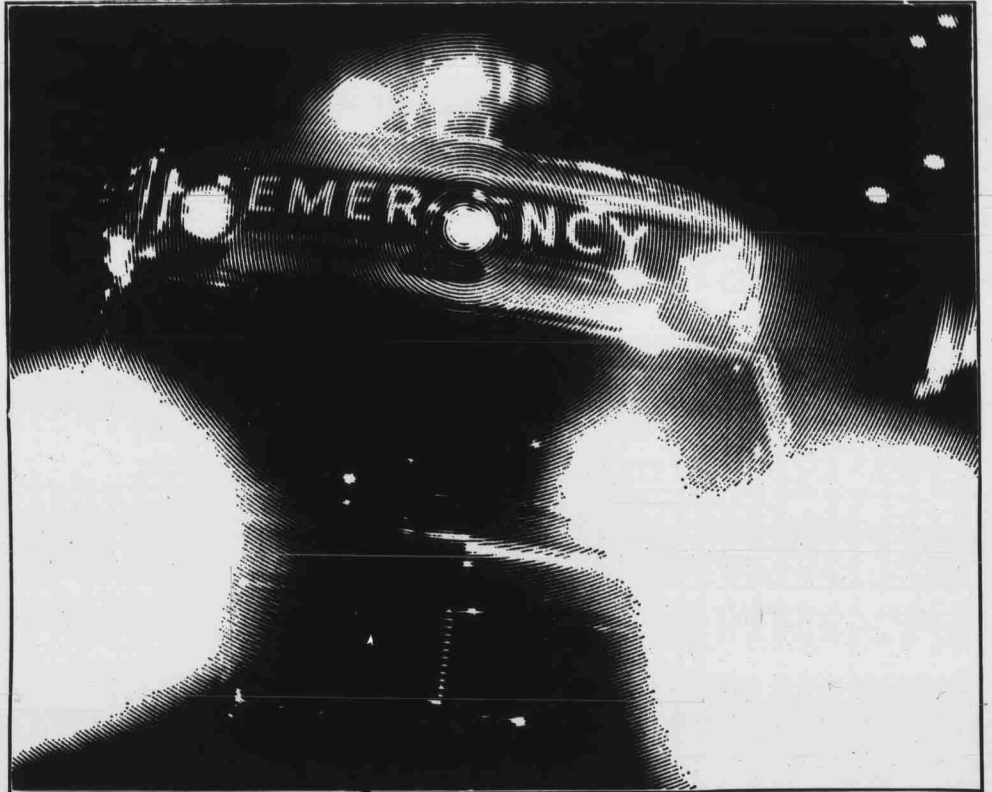
featuring a full line of dependable

TEXACO

products

corner of

Hillsborough and Dixie Trail



OFFER GOOD
MONDAY
TUESDAY
WEDNESDAY
THURSDAY

DISCOUNT

50¢

One Coupon Per Pizza

On Any Pizza
At The
PIZZA INN
1906 HILLSBOROUGH ST.

ABORTION COUNSELING, INFORMATION AND REFERRAL SERVICES

Abortions up to 24 weeks of pregnancy are now legal in New York State. There are no residency restrictions at cooperating hospitals and clinics. Only the consent of the patient and the performing physician is required.

If you think you are pregnant, consult your doctor. Don't delay. Early abortions are simpler and safer.

If you need information or professional assistance, including immediate registration into available hospitals and clinics, telephone:

THE ABORTION INFORMATION AGENCY, INC.

160 WEST 86th STREET
NEW YORK, N. Y. 10024

212 - 873 - 6650

8 A.M. TO 10 P.M.
SEVEN DAYS A WEEK

WANT CONTRACEPTIVES PRIVATELY?

We believe you're entitled to your privacy when it comes to buying contraceptives. We're a nonprofit family planning agency and we offer you contraceptives through the privacy of thymails. We specialize in men's products (including two new European imports)—but we have nonprescription foam for women, too. And a wide assortment of books and pamphlets to answer your questions on birth control, family planning, the population problem and ecology. Want details? Write today:

Population Services, Inc.
105 N. Columbia St., Dept. F-1
Chapel Hill, North Carolina 27514

Gentlemen: Please send me full details without obligation:

Name _____
Address _____
City _____ State _____ Zip _____

Venture: Seven minutes to save a life.

The problem: lifesaving clinical tests of blood, urine and spinal fluid may take technicians hours to perform using traditional methods.

The possible solution: design a virtually complete chemical laboratory in a desk-sized cabinet that will perform a variety of clinical tests automatically, accurately, quickly.

The result: Du Pont's Automatic Clinical Analyzer, the end-product of years of cooperation and problem solving among engineering physicists, biochemists, electromechanical designers, computer specialists and many, many others.

The heart of the instrument is a transparent, postcard-sized reagent packet that functions as a reaction chamber and optical cell for a computer-controlled analysis of specimens.

Separate packs—made of a chemically inert, optically clear plastic—are designed for a variety of tests. And each pack is supplied with a binary code to instruct the analyzer. Packs for certain tests also contain individual disposable chromatographic columns to isolate specific constituents or molecular weight fractions on the sample.

In operation, the analyzer automatically injects the sample and diluent into each pack, mixes the reagents, waits a preset time for the reaction, then forms a precise optical cell within the walls of the transparent pack and measures the reaction photometrically.

A built-in solid-state computer monitors the operation, calculates the concentration value for each test and prints out a report sheet

for each sample. The instrument is capable of handling 30 different tests, the chemistry procedures for ten of which have already been developed. The first test result is ready in about seven minutes. And in continuous operation, successive test results are obtained every 35 to 70 seconds, depending on the type of test.

Innovation—applying the known to discover the unknown, inventing new materials and putting them to work, using research and engineering to create the ideas and products of the future—this is the venture Du Pont people are engaged in.

For a variety of career opportunities, and a chance to advance through many fields, talk to your Du Pont Recruiter. Or send the coupon.

Du Pont Company, Room 7894, Wilmington, DE 19898

Please send me the booklets checked below.

- Chemical Engineers at Du Pont
 Mechanical Engineers at Du Pont
 Engineers at Du Pont
 Accounting, Data Systems, Marketing, Production

Name _____

University _____

Degree _____ Graduation Date _____

Address _____

City _____ State _____ Zip _____

An Equal Opportunity Employer (M/F)



Ventures for better living.

Classified Ads

VOLKSWAGEN convertible, '63, '68 engine. Excellent condition. New top, tires, radio, etc. \$400. Call Nancy Smith 755-3211 (days) 787-7437 (evenings, weekends).

HAMILTON upright piano. Excellent tone. Good condition. \$45.00. Call Nancy Smith 755-3211 (days) 787-7437 (evenings, weekends).

MOVING WEST. Must sell all household furniture and appliances: Sofa, chairs, tables, bookcases, beds, refrigerator, washing machine, TV, etc. etc. Call Nancy Smith 755-3211 (days), 787-7437 (evenings, weekends).

FOUND: License tags, in vicinity of Harris lot, 1970 Charlotte city tag, Wolfpack tag, and an old English script Pam.

LOST: Men's NCSU class ring, reward offered. No questions asked. Call 832-2126. Ask for John.

CAR WASH Sponsored by Phi Kappa Tau Pledge Class, 2511 West Fraternity Court, 12-5 p.m. Friday, November 13, 10 a.m.-5 p.m. Saturday, November 14.

REWARD! Lost silver Omega watch with black narrow band in library. No questions asked. Call Ed. Ph: 832-6409.

LOST: Phi Kappa Tau Fraternity Pin—Lost in vicinity of 9th floor Lee lounge. \$5.00 reward. 833-6697.

CHAPTER RESIDENCE ADVISOR needed for SAE (Live in position) furnished apartment for single or married graduate student, meals provided. Call 755-9290, Josh Slaughter or Vins Bowers.

COMPUTER DATE—Why wait? Meet your ideal date. Special introductory price for this area. Sophisticated matching techniques. Now serving leading colleges and universities throughout the US and Canada. Write: National Cybernetics, Box 221, Durham, N. C. 27702.

MEN! Contraceptives by mail. Free Catalogue. No obligation. Write: POPSERVE, Box 1205-PQ Chapel Hill, N. C. 12514

United Freight Sales
1005 E. Whitaker Mill Rd.

5 SLANT NEEDLE SINGER sewing machines equipped for button holes, fan noy and zig-zag stitching. Guaranteed. Monthly

payment available. Only \$39.95 each.

5 STEREO COMPONENT systems complete with BSR changer.

speakers and dust cover. AM-FM multiplex tuner. Extra jacks for tape deck. These solid state component sets only \$99.95.

TERRY STOUT for Freshman Judicial Board Member



1.

Q. What's the oldest brewery in Milwaukee?

A. Last year Pabst Brewing Company, the oldest in Milwaukee, celebrated 126 years of brewing great beer. And that's older than your father's, father's, father's, father's moustache. Which brings us to our point: if you believe that practice makes perfect, then you can't find a more perfect beer than a Pabst.



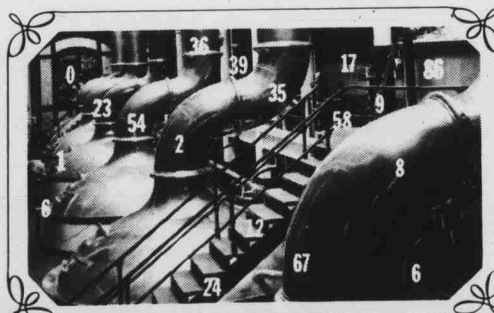
3. **Q. Who are these guys?**

A. This is a group photo of our bowling team. It was taken in 1893, the year Pabst won the Blue Ribbon as America's best beer. We still brew our beer the old-time premium way. Our bowling team hasn't changed much either.



4. **Q. What are these horses trying to pull?**

A. They're pulling one day's production of Pabst beer. This often caused traffic jams outside the brewery. These tieups were the results of efforts to supply the increasing demand for Pabst. A demand that has remained unquenched to the present day.



5. **Q. How is Pabst brewed?**

A. 1. Choice hops are gathered and placed here. 86. Then we mix in only the best grains. 22. Then the beer is allowed to brew slowly and naturally. 64. Look closely. This is a secret process that gives Pabst its good old-time flavor.

Elect

BILL WHISNANT

Publications Authority

THE STUDENT'S VOICE
IN PUBLICATIONS

2. **Q. What should I serve when the boys drop over?**

A. The perfect beverage for moments of celebration and good fellowship like this is Pabst Blue Ribbon beer. Its good old-time flavor helps break the ice and get the party rolling.



Everything You've Always Wanted to Know About Beer

...But Were Afraid to Ask

6.

Q. What'll you have?

A. Pabst Blue Ribbon, because it has something no other beer has... good old-time flavor. And if perchance we have not covered everything you've always wanted to know about beer but were afraid to ask... quell those fears. You'll find the answers to all your questions inside an ice-cold bottle or can of Pabst. On second thought, why not buy a 6-pack? It's our "refresher" course.



PABST BREWING COMPANY • Milwaukee, Wis., Peoria Heights, Ill., Newark, N. J., Los Angeles, Cal. • Pabst, Ga.

HANDY SHOE SHOP
2414 Hillsborough Street
A.R. Riggan—owner 828-9701

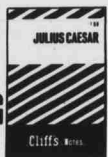
**NEW SHOES
FOR SALE**



Two Day Service

Men's Half Sole \$3.93
Men's Rubber Heel . . . \$2.04
Men's Full Sole \$7.50

**15,800,000
COLLEGE
STUDENTS
CAN'T
BE
WRONG**



By conservative estimate more than fifteen million college students have used Cliff's Notes since we became America's first literary study aid. This preference continues to build—for two big reasons:

1 / **QUALITY**—The easy-to-understand commentary and explanation you get from Cliff's Notes result from painstaking work by our board of authors. Predominantly Ph.D.'s, these scholars are especially selected for their knowledge of particular works and for their ability to make these works meaningful to you.

2 / **AVAILABILITY**—Cliff's Notes concentrate on giving you all the plays and novels most frequently assigned in college. If your dealer is temporarily out of the title you need, ask him to call us on his special "Hot Line."

Buy Cliff's Notes today—they're a bargain in understanding college literature assignments.

\$1 at your bookseller or write:



Lincoln, Nebraska 68501