

# The Technician

North Carolina State College's Student Newspaper

Vol. XLV, No. 46

Complete (UPI) Wire Service

State College Station, Raleigh, N. C., Monday, Feb. 13, 1961

Offices in 1911 Building

Four Pages This Issue

## 'Voice of America' Uses Local Students' Views

The Voice of America set up production facilities at North Carolina State College this week and recorded four programs for transmission around the world.

Students from State College, Meredith, and Shaw University participated as panelists on the program, "Report To Youth."

"Report To Youth" addresses itself to young people in English-speaking nations of the world. Young American panelists discuss their ideas, interests, and problems. The program is broadcast world-wide over VCA.

Producer Fredric Buch and moderator V. Hobson Banks were in charge of productions at State College.

Voice of America is the official broadcast branch of the U. S. Information Agency. Its mission is to disseminate to all peoples of the world programs of information and entertainment that reflect American culture and the American democratic ideal.

Broadcasts are made over short-wave radio frequencies. Programs are broadcast in English and in 37 foreign languages.

Producer Buch stated that the

## "Spring" Arrives At Union Friday

The spring fashion show presented annually by the North Carolina State College Union will be held Friday, February 10, at 8 p.m. in the College Union Ballroom.

The fashions will be furnished by Ellisberg's and Norman's, both of Raleigh.

Models for Ellisberg's fashions have been chosen from among the students of State College, Rex Hospital School of Nursing, Peace College, Saint Mary's School and Junior College, Meredith College, and Needham Broughton High School. The models will be escorted by State College students who will model the latest fashions from Norman's.

There will be an intermission during which entertainment will be provided.

The show will be sponsored by the State College Union's hospitality committee, headed by Peggy Hamilton of Fayetteville, chairman.

The show will be open to the public.

work done this week in North Carolina represents the first venture outside the Washington, D. C., area for the "Report To Youth" staff. He explained that VCA proposes to make the program more truly representative of all America by engaging panelists from all sectors of the United States.

He said, "In selecting North Carolina for our first visit we considered the high academic standards of your colleges and universities and the progressive attitudes in general shown by North Carolinians."

(See STUDENTS, page 4)

## AEC Awards Grant For Genetics Study At State College

The Department of Genetics of North Carolina State College's School of Agriculture has been awarded a three-year contract for experimental work by the U. S. Atomic Energy Commission, the College reported today.

The contract provides a grant of \$32,564 for the first year.

"Population Dynamics in the Evolution of Mutant Genes" is the topic of the study.

Prof. Ken-ichi Jojima is to be principal investigator and Prof. Therese Kelleher is co-investigator.

## Students Convicted Of Code Violations

Two State College seniors and one sophomore were brought before the Honor Code Board of Student Government last week in cases concerning alleged violations of the Honor Code. The meeting was held in the College Union on Wednesday, February 8, at 7:30 p.m.

A student accused of cheating on a plant physiology quiz pleaded guilty to the charge; his penalty was suspension from school until June 1961 and probation until January 1962. Under the Constitution, the student will receive an "F" on the course, and a mark will be placed in his permanent record.

Two seniors pleaded not guilty to charges of cheating on a bacteriology final examination. As stated in the Honor Code, any accused student has the right to face his accuser at the trial proceedings.

The eye witnesses to the alleged happening were consequently present throughout the hearing, and their testimony was included in the trial record.

After substantial deliberation, the Board found the students guilty to the charges of cheating and suspended them from school until June 1962.

In both cases the defendants were reminded of their grounds for appeal, either a violation of trial procedure or a discovery of new evidence.

Although the meetings of the State College Judicial Department are closed for the protection of the persons involved in each case, the accused students are allowed to have with them witnesses of the event or of character.

## Board Lauds College Research

RALEIGH, N. C., Feb. 14—Basic research in many areas at North Carolina State College has been cited by the Southern Regional Education Board in its publication, "University Research—Frontiers of the Future."

Mentioned specifically are North Carolina State projects in physiology, chemistry, and botany which were later applied in the field of forestry to give a boost to one of the South's biggest economic assets.

In an attempt to plan forests so that annual yields can be more standard and predictable, researchers at the Southeastern Forest Experiment Station in cooperation with North Carolina State College, began looking for and found a way to predict the size of loblolly pine seed crops from year to year.

This new method will give a way of predicting seed crops far enough ahead of time to prepare for a shortage or to make use of a surplus of forest raw materials.

Scientists found that a current year's seed crop varied with two important factors—the May-to-July rainfall two years earlier and its interaction with the seed crop that also occurred two years earlier.

A heavy crop one year makes a poor crop two years later virtually certain. Only an excessive amount of rainfall will increase the prospective crop to the average level, physiological research reported.

At State College, research scientists have found that fertilizing trees may affect the quality of wood produced. Scientists found that specific gravity—the weight of wood per unit volume—was significantly decreased by fertilization.

"Research projects like those at North Carolina State College should inspire pride of achievement in the region," said Dr. Robert C. Anderson, director of the Southern Regional Education Board. "Since research affects us all, we must see that all important fields of inquiry receive sufficient attention."

the VII Pan American Congress of Architects. She has written a number of articles for professional journals.

In association with various private firms, Mrs. Smith has done distinguished work in community and city planning, apartments and development housing, laboratories, hospitals, clinics, offices, clubs and community facilities for clients ranging from the United States government to small municipalities.

A native of Peoria, Ill., Mrs. Smith now resides in Washington, D. C.

## "Friends Of College" Present Famous Detroit Symphony

The Detroit Symphony Orchestra under the Conduction of Paul Paray will present a concert Thursday (February 16) at 8 p.m. in William Neal Reynolds Coliseum.

The concert is sponsored by "The Friends of the College Inc." in conjunction with the College Union Music Committee as a feature of the Fine Arts Festival.

Impartial authorities rank the Detroit Symphony among the three or four great orchestras in the United States. These more than 90 musicians perform 130 concerts each year attended by approximately 700,000 people.

Paul Paray, conductor of the orchestra, is a French hero and patriot who developed the Detroit Symphony Orchestra into

a magnificent instrument recognized the world over since his appointment as permanent conductor in 1951. For his contributions to European music in general and French music in particular, Mr. Paray has become a French "immortal" by being elected by that government as Membre de l'Institut.

The concert will be composed of selections from the works of Mozart, Sibelius, Rossini, Brahms, and Wagner.

It has been asked by "The Friends of the College, Inc." that students use the right front entrance of the Coliseum. The permanent ID cards plus the registration card will be required before a student and a date will be allowed to enter the Coliseum.

Those who arrive at the concert after 8 p.m. will have to remain outside until the orchestra finishes the selection they are playing. No one will be allowed to enter while the orchestra is performing.

A reception will be held in the College Union after the concert to enable the audience to become acquainted with the members of the orchestra.

The combined student body of North Carolina State College has put \$3500 into the Detroit Symphony program. It would be to the benefit of the students to attend this program because of its cultural qualities and because they have paid for it.



PAUL PARAY, CONDUCTOR OF DETROIT SYMPHONY—The Detroit Symphony Orchestra will appear at the William Neal Reynolds Coliseum Thursday (February 16) at 8 p.m. Students and a date will be admitted free upon the showing of both the permanent ID and the spring semester registration cards. The concert is a feature of the Fine Arts Festival.

## Campus Crier

Electrical Engineering students are invited to the meeting of the AIEE-IRE Joint Student Branch Tuesday, February 14, at 7 p.m. in Riddick 11. Refreshments will be served, and Aggro-neck pictures will be taken.

The ASCE will meet Tuesday, February 14, at 7:30 p.m. in Mann 436. All members are requested to attend.

Analog Computer Applications in Industry will be the topic of Mr. R. G. E. Franks, Systems Engineer for E. I. du Pont de Nemours and Company at the meeting of the AICbE at 7:30 p.m. in Riddick 242, on Tuesday, February 14. Mr. Franks is an outstanding authority on the analog computer. Refreshments will be served; all interested persons are invited to attend.

Alpha Phi Omega will hold its open meeting Tuesday, February 14, at 7:30 p.m. All brothers are asked to attend in coat and tie.

The Forest Products Research Society will meet Tuesday February 14, at 7:30 p.m. in the College Union. The guest speaker will be Mr. R. E. Nelson from the Bowster Board Co.

The AIME will hold its monthly meeting Tuesday, February 14, at 7:30 p.m. in Page 201.

All Mechanical Engineering students are urged to attend the ME Departmental meeting at 7:00 p.m. in Broughton 11 on Tuesday, February 14.

The varsity rifle team will meet at 7 o'clock p.m. Wednesday, February 15, at the rifle range in the basement of Thompson Gymnasium. It is important for all members to be present. Pictures will be taken. Everyone interested in trying out is invited to come down and sign up because more shooters are needed.

## City Design Lecture Slated

"City Design for City Life" will be the topic of a public lecture to be given by Mrs. Chloe-thiel Woodard Smith, noted American authority on city planning, at North Carolina State College Monday (February 13) at 8 p.m.

The lecture will be given in the School of Design Auditorium, Brooks Hall, on the college campus. No admission will be charged.

Mrs. Smith, a Fellow of the American Institute of Architects, will be the fourth visiting lecturer in the School of Design's

current lecture series. This will be Mrs. Smith's second appearance at State College. In 1950, she was visiting lecturer in the School of Design. She also has lectured at Duke University in architecture and city planning.

Mrs. Smith earned a "cum laude" degree of Bachelor of Architecture at the University of Oregon. She received her Master of Architecture degree from Washington University.

She served as chairman, Division of Pan American Affairs, AIA, and as U. S. Delegate to

Comments From The Editor  
*Help This Time*

A four-year old boy is dying in Rex Hospital of an incurable brain tumor while his parents are frantically searching for ways to alleviate some of the pain which he is enduring and to make his last days as happy and as full as is humanly possible. (See story this page)

His father, who graduated from the School of Textiles last semester, is in exactly the same position that most of the married students here are. He and his wife have sacrificed to pay scholastic expenses, and recently when they were finally seeing the end of the difficult road, Fate struck them a vicious blow. Their son requires around-the-clock nurses, and a series of delicate brain operations have been necessary. This has run into expenses which far exceed the capacity of almost anyone to pay, and it has made it doubly difficult for a student who had almost drained his resources in acquiring his education. The family has borrowed as much as it possibly can, and no end to the expensive medical expenses is in sight.

When the Campus Chest Drive was held here, the students contributed disappointing fraction of the goal, but when we ask for assistance for this young couple, it should stir a greater response. Anything that might be given, would not be for someone of whom we have no knowledge. This would be helping a fellow student who has had much worse luck than anyone could reasonably expect.

Any organizations or individuals that could find it possible to help this couple may send any contribution to Mr. Gene E. Inman of 618 Chapel Drive, Raleigh (who is the father) or to Mike Lea, *The Technician*, Box 5698, State College, Raleigh.

We feel that everyone and every organization should find it possible to help someone so desperately in need of aid.

ML

*Umbrella For Craven*

Charles Craven, the most outspoken and most unfair critic of State College, recently loosed one of his more pointless blasts at us in his daily column in a local paper. It seems that Charlie was going by the campus during one of the sleet storms when he saw some students carrying umbrellas to ward off the icy pellets.

From this, he reported that State students did not know enough to realize the true purpose of an umbrella—that of using it only as a protection from rain. Students were accused of pseudo-Ivy Leagueism for carrying them in the sleet. Since sleet has the rather startling property of melting when it comes in contact with a person, and becoming identical with the more common form of precipitation; someone more cynical might say that Craven does not know enough to come in out of the rain.

We do not feel this way, however. The way we see it, Charlie did go out in the sleet without any protection; and the pounding of the ice on his head (which has very little natural protection) so addled his brain that he could not see the common-sense of anyone keeping themselves from getting soaked to the skin while waiting in the registration lines for a couple of hours.

ML

**The Technician**

Monday, February 13, 1961

Editor ..... Jay Brame  
Managing Editor ..... Mike Lea  
News Editor ..... Bill Jackson  
Fraternity Editor ..... Ed Puckhaber  
Copy Editor ..... John Curlee  
Sports Editor ..... Earl Mitchell  
Associate Sports Editor ..... Richie Williamson  
Sports Staff Writer ..... Doug White  
Staff Writers ..... Parks Cobb, Sidney Andrews, Allen Lennon, Kermit Humphrey  
Columns ..... Ann Smith  
Photography ..... Clyde Hoey  
Cartoonist ..... Richard Croom

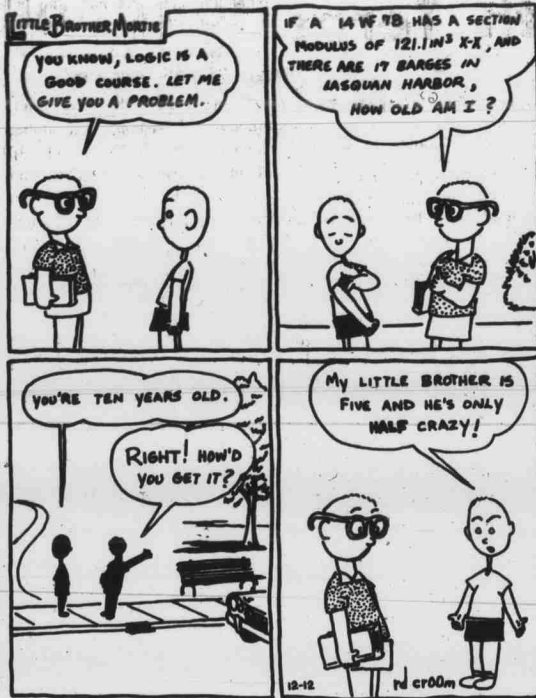
**Business Staff**

Business Manager ..... Richard Culp  
Circulation Manager ..... Doug Angel  
Advertising Staff ..... Joe Eagles

Represented for National Advertising by NATIONAL ADVERTISING SERVICE, INC., College Publishers. Representative, 18 E. 50th Street, New York, N. Y.

Entered as second class matter, February 19, 1920, at the Post office at Raleigh, North Carolina, under the act of March 3, 1879. Published every Monday, Wednesday, and Thursday by the students of North Carolina State College except during holidays and exam periods. Subscription rate is \$4.00 per school year.

**Cruising . . .**



**With Croom**

**Son Of State Graduate In Critical Condition**

Mr. and Mrs. Gene E. Inman of 618 Chapel Drive, Raleigh, are in desperate financial straits—and their four-year-old son, Keith, is in critical condition, with no hope of recovery.

Keith, whose days are numbered, is a patient at Rex Hospital, where he had the latest in a series of brain operations Thursday (February 9, 1961).

Up until last Christmas, Keith was a healthy-looking, vigorous child of four years of age, with all outward appearances pointing toward a normal development.

Three days after Christmas, however, he underwent surgery at Rex Hospital, and his doctors discovered he had a malignant brain tumor. They gave him two to three years to live.

A week after his operation, Keith had a stroke which, of course, complicated matters. Since that time, his doctors said he has only days left to survive in his young life.

Periodically, since the stroke, Keith's brain has had to be drained as fluids built up, adding pressures.

A further operation was nec-

essary Thursday to clear blocked passages which prevented the draining of the fluids from his brain.

Throughout his hospitalization, nursing services have been required around the clock.

Medical expenses have mounted. The family's savings and those of other members of the family have dwindled.

Gene, a native of Fairmont, Robeson County, was graduated from the School of Textiles at North Carolina State College last month. He invested heavily in his education prior to Keith's illness.

On top of this, the child's illness put an undue and unexpected drain on the family's financial resources.

Friends have helped. Gene's fellow students and others in the State College School of Textiles donated more than \$600 to help Keith.

Fellow residents in Statesville, State College married student housing development, also have chipped in.

But more help is needed. The family has borrowed to the full extent of its financial ability.

No further assistance is in sight.

Meanwhile, expenses continue to pile up while Keith's young life slowly passes away.

Inman has accepted a job with Fieldcrest Mills in Leaksville.

**Subscription Rates For Technician**

Rates for subscriptions to *The Technician* for the Spring semester are \$1.00 for Monday editions only and \$2.00 for all editions. Faculty members may subscribe for the semester for \$1.50.

Anyone desiring a subscription should send their name address, and the appropriate amount of money to Richard Culp, Box 5698, State College, Raleigh, N. C. Subscriptions will start as soon as address plates can be made.

**Letter to The Editor**

**IFC Entertainment Verified**

To The Editor:

This spring's entertainment for the IFC Weekend, April 21-23, will be Joni James, The Larry Elgart Orchestra and a local rhythm and blues group. Before any fraternity man starts to pre-determine the effectiveness of the weekend, let us look at the overall picture.

Each fraternity has its favorite type of music ranging from the most in modern jazz to the popular rhythm and blues, and each strongly advocates their particular favorites. At the last IFC meeting it was decided, by a majority vote, to book Louis Armstrong and a rhythm and blues group with a second choice being The Duke Ellington Orchestra. Neither Louis Armstrong or Duke Ellington are

available for the April 22nd date. Bookings are made every day in the entertainment business and gradually all of the top attractions go on extended tours, and one particular day, such as April 22nd, is lost in the shuffle. Therefore, so as not to be left with absolutely no choice, as was the case in the Fall when constant deliberation put us at the bottom of the "totem pole", I booked the above mentioned artists.

Joni James was at State two years ago and was a tremendous success. Larry Elgart was at State, with his brother, three years ago and was received very well. And for the fraternities that prefer rhythm and blues, the local groups are receiving

much praise as they play individual fraternity parties.

The dance is being planned for the College Union, and the attire has been changed from the formal to the semi-formal to eliminate the distress of the "penguin suit" and the "inconvenience" of the formal dress. The outdoor concert is still on the agenda, and the acoustics will definitely be improved. So before you jump to any conclusions and start "knocking" the entertainment for the weekend give it and yourself a chance, and I can safely say that you will thoroughly enjoy Spring Greeks,—provided, of course, that you have a date or should I say a "good" date.

Alan Altman  
Vice President  
IFC

**STATEMENTS**

Well, Wake Forest and Carolina played another ball game without a flare-up. Congratulations.

problem is well on its way to being solved.

When reading about a fraternity pledge who was handcuffed to a statue in freezing weather in Texas, it was noticed what a contrast existed here at State where hazing incident are nonexistent.

The Student Supply Store is good enough to the students to not charge them any tax on purchases. We sometimes wonder what the difference is in charging the three per cent or adding three per cent to the price of the books on the covers. Thanks for small favors.

We wonder if the new Secretary of Labor, Arthur J. Goldberg on his inspection tour of the unemployed stopped by to see Richard Nixon.

It stimulates a young person to be daring. A young boy will yell "dirty copper" just for the pure exhilaration of being chased. College students are more mature, however. They are irreligious. What can be more exhilarating than gambling all eternity?

"Assembly Off to Fast Start". We hope in their haste they have time to study the slash of the budget which the Consolidated University presented to the Board of Education.

It might be an improvement if Lumumba stays lost.

We noticed that the crowd around the contemporary valentines was much bigger than the crowd looking at the "sweet" ones. We hope that this is a sign that the overpopulation

**Hofbrau Restaurant**

Finest German Foods

Served in Continental Atmosphere

Keep Your School Funds in a

**SPECIAL CHECKING ACCOUNT**

\* No Service Charge

\* No Minimum Balance Required

\* Just a Small Charge for Book of Checks

JUST OFF THE CAMPUS A CONVENIENT DRIVE-IN BRANCH  
CAMERON VILLAGE  
(Across from Sears Parking Lot)

PLUS 6 OTHER OFFICES IN RALEIGH

OPEN FRIDAY AFTERNOON 3:00 to 6:00

**NORTH CAROLINA NATIONAL BANK**

Member F. D. I. C.

Member Welpack Club, Tool

# Pack Seeks Revenge In Game With Terps

By Earl Mitchell  
Sports Editor

North Carolina State will attempt to gain revenge tonight in Reynolds Coliseum when they take on the visiting Maryland Terps at 8 o'clock. So far this season the two teams have met twice, once in the Dixie Classic and once in the regular season. The Pack won the first, but the Terps won the return engagement at College Park just before the semester break.

It appeared that the Maryland team had improved a great deal since their Classic appearance up until this past weekend when they were beaten by both Clemson and South Carolina on successive days. State, on the other hand, after a slow start in the Classic, moved on to take the consolation championship, but they started to slow down until just this past week when they edged by Duke.

The Maryland game will be the first of four for the Wolfpack this week. After facing Maryland tonight, the Pack will

move over to face Carolina and then to Charlotte for a two-day doubleheader in which they will play South Carolina and Clemson. With four ACC clashes on tap it is evident that the Pack will have a good opportunity to improve on their conference record.

Going into the game tonight the Pack will have the advantage of a five day rest, while the Terps have been on the road since Friday. In addition, the home court should offer a little more of an edge for the Pack.

There will be one change in the Maryland lineup since the Pack played them several weeks ago. Jerry Greenspan, who added a lot of punch to the Maryland group, has been forced to drop from the team due to scholastic troubles and this loss has definitely been felt by the Terps.

The probable starting lineup for the Terps will include Bob McDonald and Bill Stasiulatis at the forwards, Bob Wilson at center, and Bruce Kelleher and Paul Jelus at the guards. Top substitutes for Bud Millikan's crew include Bob Eicher and Connie Carpenter.

At the present time it looks like the starting lineup for the Wolfpack will include Bruce

Hoadley at one forward with either John Pungler or Russ Marvel at the other post, Moose DiStefano at the pivot, and Dutch Muehlbauer and Ken Rohloff at the guards. Key reserves for the Wolfpack will be Jon Speaks at guard and Terry Litchfield at either forward or center.

It was not known at press time whether Stan Niewierowski will be able to play tonight or not. The Pack's leading scorer has been out of action since the Virginia game with a bad ankle. According to the latest scoring figures on the Wolfpack, Niewierowski held a slim lead over DiStefano, who is moving up quickly. The number three scorer in the Wolfpack lineup is Rohloff with a 12.0 average and close on his heels is Muehlbauer at 10.5. Pungler is next in line with an 8.1 average.

It is interesting to note that both Maryland and State figured in three of the four upsets in the ACC last week. State started the ball rolling on Tuesday night with a win over Duke and then Maryland was upset by both Clemson and South Carolina. The other upset of the week was the South Carolina win over North Carolina in a real surprise contest. South Carolina pulled two of these upsets and they will be one of the Pack opponents in Charlotte this weekend.

With the four reverses this past week, the ACC tourney gets more interesting looking as the season draws to a close. If the present trend continues, the tournament will really be needed to tell which of the seven is the best team to represent the conference in NCAA play.

## Notices

A national magazine is currently looking for a color picture of Roman Gabriel for one of its issues. The picture must be a color slide. Any persons having such a picture and would be interested in having it used should get in touch with the Sports Editor in Room 137 of the 1911 building or call TE 2-9363.

Coach Paul Derr announced that all persons interested in participating in indoor track should report to him in Frank Thompson Gymnasium. Coach Derr stressed that he is in need of a large number of participants. The sport is open to both freshmen and varsity candidates.

## NEW FOR SPRING

An able and washable collection of lightweight suits resplendent in color and fabric. Of dacron and cotton blend these suits will take plenty of heat, wear & washing . . . and always keep in shape. In both light & dark shades. From 39.95

**varsity**  
MENS WEAR

Hillsboro at State College

# Handball Finals On Tap Tues.

By Richie Williamson  
Associate Sports Editor

The intramural handball tournament reaches its climax tomorrow night at the Frank Thompson gym as the final round in both the dormitory and fraternity tournaments will complete the season. The dorm championship match begins at 6 o'clock when unbeaten Bragaw South defends its championship against once-beaten Berry. The fraternity championship follows at 7 o'clock with a rematch of last year's finalists, SAM and SAE. SAE defeated PKT 2-1 on Thursday night to emerge from the loser's bracket and get another crack at stopping the defending champs.

Most of the basketball action last week centered on fraternity play. One of the big games saw Sigma Chi overcome a six point halftime lead to stop previously unbeaten Sigma Nu 41-39. Norton and Dellinger paced the victory which put Sigma Chi into a tie for second place with PKP in section one. These two teams meet on Tuesday night with the winner gaining a playoff spot.

Other games in this last week of regular season play which will decide playoff spots match SPE against Delta Sig in section two, and PKA against Kappa Sig in section three. The playoffs will begin next Monday night with eight fraternity teams battling for the title, and six dormitory teams will fight for their championship.

SAM moved into a tie for first place in their section of the bowling league as they took four

points from Theta Chi. Dor Wechsler rolled a 525 series to lead the way. Sigma Chi, paced by a 214 game by Jim Hart, beat Sigma Pi 3-1 to move into third place. Dorm results for the past week were not available for this issue. The standings for both leagues:

Fraternity	
Section #1	10-2
SPE	9-3
D. Sig	7-1
S. Nu	6-6
PKT	5-7
PKP	4-8
AGR	3-5
LCA	2-6
KA	2-10
Section #2	
SAM	9-3
PKA	9-3
S. Chi	7-5
K. Sig	5-3
TKE	5-7
T. Chi	4-8
S. Pi	4-8
PEP	3-5
SAE	2-6
Dormitory	
Section #1	
Syme	8-0
Berry	7-1
Tuck 1	3-1
Owen 1	3-5
Alex	2-6
Brag N.	1-3
WG4	0-8
Section #2	
Tuck 2	6-2
Becton	5-3
Owen 2	5-3

Charge It — Nothing Down  
Terms to Fit Your Budget

**WM. DANIEL'S**  
CAMERA SHOP  
22 W. Hargett St.

## VALENTINE'S SPECIAL AT THE COLONY THEATER

★ ★ ★  
**Date Night**

★ ★ ★  
**ALL GIRLS ADMITTED  
FREE WITH ESCORTS**

★ ★ ★  
**FREE BOX OF  
CANDY GIVEN AWAY**



"WHY CAN'T I STOP?"  
M-G-M presents  
**ELIZABETH TAYLOR**  
**LAURENCE HARVEY**  
**EDDIE FISHER**  
IN JOHN HYAM'S  
**BUTTERFIELD 8**  
CINEMASCOPE - METROCOLOR  
**Colony Theater**  
Five Points

## LAST DAY

Remember with  
**Whitman's**  
CHOCOLATES



GIVE THE FAMOUS  
**Whitman's**  
CHOCOLATES  
VALENTINE HEARTS



Large variety of beautifully decorated hearts



**STUDENTS  
SUPPLY  
STORE**

## 20% DISCOUNT For Students Only

Students—  
Let us dry clean your wash and wear clothing.  
It will look better and last longer.

QUICK SERVICE IF NEEDED

**FRIENDLY CLEANERS**

2910 HILLSBORO STREET

# IBM WILL INTERVIEW FEBRUARY 21-22

Candidates for Bachelors or Masters Degrees are invited to discuss opportunities in:

## Marketing and Sales Engineering and Science

This is a unique opportunity to find out about the many career opportunities at IBM. The IBM representative can discuss with you typical jobs, various training programs, chances for advanced education, financial rewards, and company benefits—all important factors that affect your future.

### SOME FACTS ABOUT IBM

**An Unusual Growth Story:** IBM has had one of the exceptional growth rates in industry. It has been a planned growth, based on ideas and products having an almost infinite application in our modern economy.

**Diverse and Important Products:** IBM develops, manufactures and markets a wide range of products in the data processing field. IBM computers and allied products play a vital

role in the operations of business, industry, science, and government.

**Across-the-Country Operations:** Laboratory and manufacturing facilities are located in Endicott, Kingston, Owego, Poughkeepsie and Yorktown, N. Y.; Burlington, Vermont; Lexington, Ky.; San Jose, Calif.; Bethesda, Md.; and Rochester, Minn. Headquarters is located in New York City with sales and service offices in 198 major cities throughout the United States.

**The Accent is on the Individual:** No matter what type of work a person does at IBM, he is given all the responsibility he is able to handle, and all the support he needs to do his job. Advancement is by merit.

**The areas in which IBM is engaged have an unlimited future.** This is your opportunity to find out what that future has to offer you.

**Call or stop in at your placement office to arrange an appointment with the IBM representative for the date above.** If you cannot attend an interview, write or call the manager of the nearest IBM office:

**Mr. M. E. Johnson, Branch Manager**  
IBM Corporation, Dept. 882  
322 Hillsboro Street  
Raleigh, N. C.  
TE 4-6451



**IBM**

You naturally have a better chance to grow with a growth company.

## Cattlemen's Conference Sponsored Here Wed.

The 10th annual Cattlemen's Conference will be held at the North Carolina State College Union Thursday and Friday (January 19 and 20).

Following registration on Thursday morning, Dr. H. B. James, dean of the School of Agriculture, will welcome the approximately 250 persons who are expected to attend the two-day program.

Special off-campus speakers will include Bill McMillan, executive secretary of the American National Cattlemen's Association; Fieldon Miller, Albe-

marie; Dr. Ferrell De Graff, Cornell University; Bill Austin, executive secretary of the N. C. Cattlemen's Association, Raleigh; and Dr. T. J. Marlowe, Virginia Polytechnic Institute.

Discussions will cover brucellosis control, cattle sales and production, feed additives, and pasture production. Special exhibits and demonstrations will also be featured.

The program will be conducted by the State College Department of Animal Industry and N. C. State College Extension Division in cooperation with the N. C. Cattlemen's Association.

## Students' Views Taken

(Continued from page 1)

Programs were recorded earlier in the week at the University of North Carolina in Chapel Hill, with students from UNC, Duke University, and North Carolina College.

in the College Union. Since par hands are difficult to play and the scoring is somewhat different from regular contract bridge, studying the hands from last year's Tournament should be a great aid in preparing for the Tournament.

Last year, North Carolina State won the National Intercollegiate East-West Championship. We sincerely hope that State will be well represented this year and will make it a hundred percent victory.

Four programs were produced at State College and tape-recorded in the studios of WKNC, student radio station. Three program panels were composed of students from the three Raleigh colleges.

State College students who participated were Joel Ray of Asheville; Bob Cooke of Huntersville; Charles Little of Kenly; Duncan Hudson of Birmingham, Mich.; Thomas Van Aarle of Saginaw, Mich.; Joseph V. Morog of Raleigh; and Mike Kinlaw of Lumberton.

Panelists discussed such topics

Earn \$135 weekly during summer traveling overseas. MUST BE U. S. CITIZEN. Complete details furnished. Send \$1.00 Lansing Information Service, Dept. E-13, Box 74, New York 61, N. Y.

as "working your way through college"; "youth and agriculture in the United States"; and "youth and the arts". Dr. William Henry, professor of agricultural economics, participated as faculty panelist on the second program.

A fourth program was moderated by Dean Henry L. Kamp-hoefner of the School of Design. The programs are scheduled for world-wide broadcast in the "Architecture and related arts" near future.

Buch, program producer, stated, "We are highly pleased with the students we've worked with in Raleigh and Chapel Hill. They have made us really enjoy our work. We are proud of the job we've done here."

## Bridge Tournament Planned By CU

The Fourteenth Annual National Intercollegiate Bridge Tournament will be held Wednesday, February 22, at the College Union. The game will begin promptly at 7:15 p.m. Trophies will be awarded to national, regional, and campus winners. Only undergraduate students will be eligible for the prizes; however, graduate students and faculty members who are interested will be allowed to play.

The Tournament will be scored on a par basis, with the pair scoring the most pars winning. Eighteen hands will be played with pars on ten of the hands. In case of ties the all-round play on the non-par hands will decide the winners.

Tuesday, February 14, the hands from the Tournaments for the last two years will be discussed at the first meeting of the State College Bridge Club. The meeting will be at 7:30 p.m.



The Genuine Weejun...  
Hand Sewn by Bass,  
Shoemakers since 1876

\$14.95

**varsity**  
MEN'S WEAR

Hillsboro at State College

FOR THE BEST  
IN SPORTING GOODS

Guns, Fishing Tackle,  
Bicycles and Hobbies  
Bicycles Repair  
and Accessories

**HILL'S INC.**

1720 North Blvd. or  
U. S. 1 North



We all make mistakes...

ERASE WITHOUT A TRACE  
ON EATON'S CORRASABLE BOND

Typing errors never show on Corrasable. The special surface of this paper makes it possible to erase without a trace—with just an ordinary pencil eraser. Results: clean-looking, perfectly typed papers. Next time you sit down at the keyboard, make no mistake—type on Corrasable!

Your choice of Corrasable in light, medium, heavy weights and Onion Skin. In handy 100-sheet packets and 500-sheet boxes. Only Eaton makes Corrasable.

A Berkshire Typewriter Paper



EATON PAPER CORPORATION PITTSFIELD, MASS.

"WE SPECIALIZE IN CHARCOAL STEAKS"

**Dob's Restaurant**

BREAKFAST, LUNCH & DINNERS

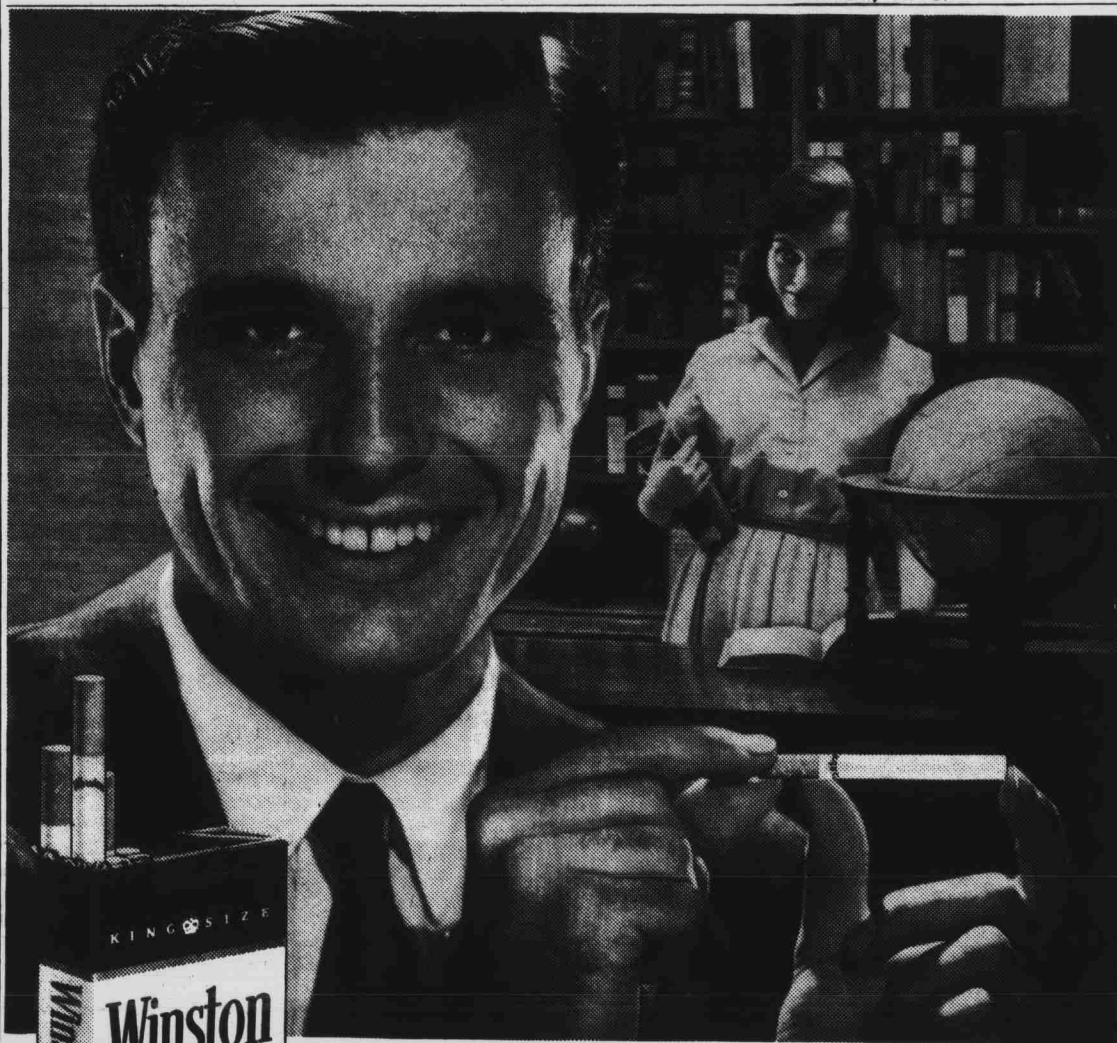
A COMPLETE SELECTION OF THE FINEST FOOD

4 BLOCKS FROM DOWNTOWN RALEIGH  
SOUTH ON U.S. 70 & U.S. 401

CIVIC, SOCIAL AND BANQUET ROOM FACILITIES

BILL RALLIS  
MANAGER

RESERVATIONS CALL  
TEMPLE 3-0073



It's what's up front that counts

**FILTER-BLEND** gives you the real flavor you want in a cigarette. Rich golden tobaccos specially selected and specially processed for filter smoking—that's Filter-Blend.

R. J. Reynolds Tobacco Co., Winston-Salem, N. C.

**WINSTON TASTES GOOD** like a cigarette should!