





SPORTS
Comments

By "ACE" KROCHMAL
The top story of the week is the news that Herman Hickman has been chosen to fill the job of head track coach...

Krochmal
action in getting a track coach and trainer for next year. Action was very definitely taken, back in the fall term, or possibly before, as Professor Fisher's statement shows.

New Member
With the resignation of Dr. Peole from our faculty to go to Clemson College as president, a vacancy will be created on the Athletic Council for a faculty member.

Here and There
State won an unofficial athletic victory last Monday night when Ted Johnson scored a lightning Hampton got the nod over three Carolina men...

State Takes Six Matches of the Seven in Straight Sets
State College's tennis team had easy going against Boston College last Wednesday when the Techs beat the visitors 7-0 in a match which saw State take all the matches, except one, in straight sets.

Take that date
BOWLING
At
HAYES-BARTON
BOWLING ALLEY
1915 Fairview Road
"At 5 Points"

Congratulations
Engineers...

ILLUSTRATIONS
FOR YOUR
ADVERTISING

State Baseball Team Defeated By Spiders 5-0

Diamondmen Bow To Richmond In Season's Opener

Visitors Hold State to Three Hits, by Harris, Carter and Henderson

The Red Terror baseball squad met the Richmond Spiders in the opening encounter of the season yesterday afternoon and lost to the Virginia team, 5-0.

The Spiders opened the scoring in the second frame. Miller walked and advanced to second on a State error. Farris singled to score Miller and later tallied on another miscue by Morrison. Stuart Hoskins, Richmond catcher and star basketball player, connected for the circuit in the third inning to put the Spiders in the lead, 3-0.

Peanut Doak took over the mound duties for the State club in the fourth and held the visitors scoreless during the three innings he worked. He gave up two hits during the three frames.

The Spiders added another run in the seventh. Freeman erred on Lockie's drive and he advanced to second on Hoskins' fielder's choice. Bill Burns singled to send Lockie in with the fourth Richmond tally. They added their final marker in the eighth on a single by Powers and a double by Walt Whaley.

Henderson Hits
Dave Henderson, Tech right-fielder, garnered the first hit off Butcher in the fifth, but he was left stranded on the sack. In the last of the ninth the State club threatened again. Bill Morrison walked to open the Tech half. Carter then singled to send Morrison to second. Vaughn, Richmond mound ace, tightened up and sent Brown, Harris and Henderson in order to end the threat and the game.

Coach Ray Sermon's varsity track team will make its 1940 debut Saturday, meeting Duke's crack cindermen on the State track. At the same time the State freshman baseball team opens its 1940 season Wednesday in Buie's Creek, playing Campbell College.

Richmond
Ab. R. H. E.
Whaley, 2b 5 0 1 1
Lockie, ss 5 1 0 1
Hoskins, c 1 2 0 0
Burge, 1b 5 0 1 0
Butcher, p 4 0 1 0
Miller, lf 3 1 0 0
Farris, rf 3 1 1 0
Powers, 3b 1 0 0 0
Humbert, cf 3 0 1 0
Vaughn, p 1 0 0 0
xx-Philpot 0 0 0 0

TOTALS 38 5 8 1
STATE Ab. R. H. E.
Constant, cf 3 0 0 0
Carney, ss 4 0 0 0
Morrison, 3b 3 0 1 0
Fahley, c 1 0 0 0
Brown, lf 3 0 0 0
Harris, 1b 4 0 1 0
Henderson, rf 4 0 1 0
Freeman, 2b 2 0 0 3
Kaufman, p 1 0 0 0
R. Doak, p 1 0 0 0
Smith, p 0 0 0 0
Harper, p 0 0 0 0
Doak, c 2 0 0 0
Carter, c 0 0 0 0
Ritter, ss 0 0 0 0
McAulay, rf 1 0 0 0
zz-Jones 1 0 0 0

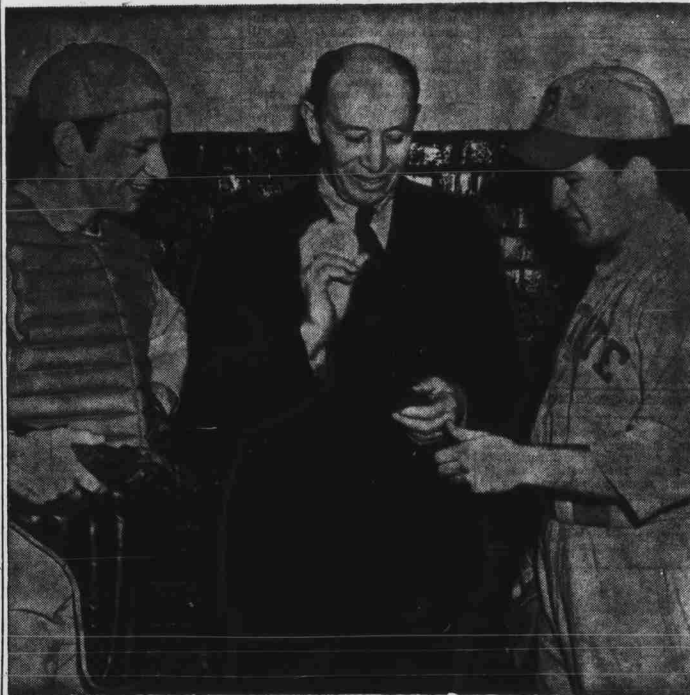
Totals 31 0 3 4
x-Replaced Butcher in the 7th.
xx-Replaced Farris in the 7th.
z-Batted for Smith.
zz-Batted for Freeman.
Score by inning:
Richmond . . . . .021 000 110
State . . . . .000 000 000
Two-base hits: Whaley, Three-base hits: Butcher. Home runs: Hoskins.

TRACK COACHES Pictured here are Dr. Ray Sermon, State's varsity track coach whose resignation becomes effective June 30, and Herman Hickman, who assists Coach Sermon and has been named by the Athletic Council his successor.



For the BEST Food, Properly Prepared . . .
CAPITOL RESTAURANT
We Serve Only the Freshest Vegetables
W. MARTIN STREET RALEIGH, N. C.

"NOW BOYS, HERE'S HOW IT'S DONE" This might very well be the caption of this picture, as Mr. Chick Doak, until this year coach of State's baseball team, talks things over with his two sons, "Little Chick" on the left, and "Peanut" on the right. Both boys are on the varsity nine, "Little Chick" as catcher and "Peanut" as pitcher. "Peanut," working three innings yesterday against Richmond with his brother on the receiving end, turned in the best job of the four pitchers Coach Newton used, limiting the Spiders to two hits.



Frosh Nine To Play Campbell

Yearlings Will Open Season Wednesday at Campbell; Play UNC Here Friday
Over 35 candidates reported to Coach Nig Waller early last week to begin practice for the 1940 freshman baseball team.

Cindermen Open Against Duke

Track Team Opens 1940 Season in New Stadium Against Blue Devils
The second edition of the revived State track team makes its first bow of the season next Saturday against Duke University's powerful Blue Devils in the new track stadium.

'MURALMUSINGS

By WALTER WILLIAMS
In the big league brackets of intramural softball we find three games played off this week and many others scheduled for the coming week.

COACH NEWTON

New head of State's baseball team is Doc Newton, who is also head football coach. Doc has an outstanding record as a coach in the American Legion Junior League.



Netters Get 7-0 Win Over Boston

State Takes Six Matches of the Seven in Straight Sets
State College's tennis team had easy going against Boston College last Wednesday when the Techs beat the visitors 7-0 in a match which saw State take all the matches, except one, in straight sets.

Netters Get 7-0 Win Over Boston

The summary:
Cline defeated Campbell, 6-1, 6-2; Sales defeated Richaud, 6-1, 6-0; Owens defeated Powers, 6-1, 6-0; Light defeated Converse, 6-2, 6-0; Baker and Katterman defeated Sullivan and Campbell, 6-2, 6-7; and Owens and Pruitt defeated Richaud and Powers, 6-1, 6-1.

Hickman Named Track Coach By Council

Former Tennesseer Star to Head Cinder Men Next Year
By "ACE" KROCHMAL
In an exclusive story given to the Technician yesterday by Professor H. A. Fisher, chairman of the Athletic Council, it was announced that Herman Hickman will become head track coach here next spring.

Hickman Named Track Coach By Council

While at the University of Tennessee, where he was an All-American football player, Coach Hickman was undefeated in dual competition in the shot-put for three years, and placed second in the Southern Conference meets of 1930-1931 in this event. While lined up at Wake Forest, Coach Hickman helped coach the Deacons' track team one year. As a player with the Brooklyn Dodgers' pro football team for three years, in New York, Hickman was an enthusiastic follower of the various track meets which are held in New York.

Saturday Absolutely the LAST Day!

Selling-Out SALE

In the KLINE'S MEN'S WEAR Shop
16 East Hargett Street
HATS \$1.00
Any Hat in Our Stock
TIES 19c
All Ties at One Price Only
SHIRTS 69c
Entire Stock, All One Price
PANTS 99c, \$1.49
Good Patterns, All Sizes
HOSIERY, pair 16c
All Sizes—All Colors. 2 Pair 25c
SWEATERS 79c, 99c, \$1.29
Sleeveless, Slipover and Coats
Belts and Suspenders, pair 19c
Kline's MEN'S WEAR Shop
16 East Hargett St. Raleigh, N. C.

# Industrial Support Sought For New Cooperative Plan

**FORMULATE COOPERATIVE PLAN** Alternate periods of work and study are proposed in a cooperative educational program for juniors and seniors in the School of Engineering. The plan was devised by Dean Blake R. Van Leer of the School of Engineering (left) and Prof. Frank F. Groseclose, associate professor of industrial engineering, shown below. Prof. Groseclose is director of the program.



BLAKE R. VAN LEER      FRANK F. GROSECLOSE

## Students Meet To Study Bible

An enterprising group of students on the campus have formed a Bible study organization which meets every Sunday in the YMCA from 2 to 3.

From a meager beginning of four members, the group has grown to an active membership of 14 men. The meetings are informal round-table discussions of various parts of the Bible. Once a month the State College group meets with a similar Meredith group. Plans are being made to extend these groups.

## Congratulations Engineers . . .

... On Your 14th ANNUAL FAIR

Have your car washed and polished for the dance

## ALLEN'S SERVICE STATION

531 Hillsboro Street

Dial— 2-2875

Call For and Delivery Service

## The Last Word in Collegiate Footwear

Brown and White Saddle Oxfords

EDGERTONS— \$5.50

STAR BRAND— \$4.00



## J. M. Edwards

12 E. Martin Street

Raleigh, N. C.

## Congratulations Engineers . . .

DOBBS HATS  
GRIFFON CLOTHES

... For MEN and COLLEGE MEN ...

SPORT COATS  
and SLACKS

## NOWELL

CLOTHING COMPANY

311 Fayetteville Street

RALEIGH

## Letters Written to 200 North Carolina Industries; Program to Begin in Fall

Letters requesting the cooperation of about 200 North Carolina industries in the Cooperative Educational Plan at State College will be sent out next week. It was revealed yesterday by Prof. Frank F. Groseclose, director of the cooperative program.

The present program, which will begin with the opening of school next fall, calls for accepted juniors and seniors to attend classes six months and to spend six months in industries allied with their college work. The cooperative program will defer the period of graduation one year, since the work normally scheduled in the junior and senior years will be extended over three sessions of two quarters each.

In writing to the firms, they will not be asked to run an "apprentice school," but will be asked to supply a regular job at which two students may be able to alternate during regular periods.

**Enthusiastic Response**  
Engineering students at State College were explained the plan of cooperative education during assemblies this week, and student response was enthusiastic. Dean Van Leer said that other schools had been using the cooperative plan and had gained splendid cooperation from industry. He inaugurated a similar program while he was dean of engineering at the University of Florida.

The plan calls for one group of students to attend college from September 16 to March 15, and spend the other six months in industry. A similar group will work in industry from September 16 to March 15, and will attend their classes during the spring and summer quarters. In connection with the work in industry, the college will not guarantee a student work or promise any certain amount of compensation, but it will use every effort to space students to their best educational and financial advantage. All wages from employers will be paid directly to the student.

**Here To Stay**  
In commenting on the plan, Dean Van Leer said, "The cooperative plan of education apparently has come to stay. It has passed through the experimental stage, survived the depression, and is now firmly rooted in the educational systems. After 33 years of operation, about 25 colleges and 10,000 students are using cooperative plans of engineering education."

In speaking to engineering students, Dean Van Leer outlined many advantages to students, industry, and society that will result from the cooperative plan. He added that the plan makes a college education possible for thousands of students at a far less net cost to society than in the case for the four-year full-time college course, and releases to society a group of capable men who otherwise would be denied a college education because of lack of finances.

No new courses or curricula will be formed or will be necessary for execution of the cooperative plan, according to Dean Van Leer.

## Student Exchange Will Close Monday

Rapid Turnover Indicates Success Met by First Student Book Exchange

The Student Book Exchange has been a decided success in its first year, according to W. Reams, member of the Student Council, and Ernest Durham, President of the Student Body.

"The turnover in books has been very rapid. All students who made transactions through the exchange have been enthusiastic in their praise of the idea," said Reams, "and we are planning to continue next year, for the exchange has done more business this term than last, and I believe that as soon as the students find out more about it and realize the help that it can give them they will use it even more."

The exchange has handled between one hundred and fifty and two hundred dollars worth of transactions so far this year, and will remain open through next Monday afternoon, April 1st. Though sales for the year of the exchange end Monday, it will be opened for three or four days later on in the term so that students who have books they might want to sell the first of next year may bring them in. Books brought in at this time will be ready for sale next year to the Freshmen during Freshman week, and to the upperclassmen as soon as they arrive. Announcements will be made to the incoming Freshmen about the Exchange, so that they will have the opportunity to use the Exchange for their first-term books.

"The books most in demand this year have been those in the basic courses: Chemistry, Physics, Zoology, and first-year math," said Reams, "but running them a close second have been such books as Business English, Business Law, and Economics."

This year's college and university enrollment in the U. S. is expected to total approximately 1,400,000.

## SPONSORS FOR ANNUAL ENGINEERS' BRAWL TOMORROW NIGHT

Shown below are the young ladies who will act as sponsors for the annual Engineers' Fair and Brawl today and tomorrow, to be presented by students in the School of Engineering. The dance will be the climax to the entire fair. Glenn Garr and his orchestra will play.

Miss Jeanne Ryan of Anderson, Ind., will rule over the Brawl as Princess Pat with Hal F. Randolph of Raleigh, who will be St. Pat, named for the patron saint of engineers, who, in chasing the snakes from Ireland, "invented the first worm drive." Other sponsors and their escorts are: Miss Hazeline King of Burlington with John V. Hamme of Oxford, Miss Kathrine Turner of Raleigh with Ralph Reeves of Raleigh, Miss Nancy Ford of Raleigh with Forest Paschal of Siler City, Miss Edna Versey of Durham with Edison H. Johnson of Angier, Miss Eloise Harris of Raleigh with Ross I. Edwards of Charlotte; Miss Mary Boone of Raleigh with Macon M. Dalton of Durham, Miss Ida Dargan of Florence, S. C., with P. Porcher Gregg of Florence, Miss Peggy Bowen of Winston-Salem with Malcolm E. Watson of Winston-Salem, Miss Maxie Swindell of Swanquarter with Bruce A. Hildebrand of Statesville, Miss Jenn Hones of Durham with Lewis Fletcher of Raleigh, Miss Ruth Roueche of Greensboro with Walter D. Sharp of Greensboro, Miss Eunice Collins of Raleigh with Herbert R. Crawford of Henderson, Miss Josephine Bridger of Bladenboro with Leslie N. Boney of Wilmington, and Miss Lois Yeager of Salisbury with F. C. Cunningham of Raleigh.



## Knighting Scene Is Brawl Feature

Outstanding Seniors Will Be Rewarded in Traditional Ceremony

Highlight of the Engineers' Brawl, which will be held in Frank Thompson gym tomorrow night from 8 until 12 o'clock, will be a knighting ceremony, at which time outstanding seniors in the School of Engineering will receive recognition.

Passed down as a tradition from year to year, the ceremony has come to be looked on as a high honor for an engineering student.

These seniors, who will kiss the blarney stone as they are knighted, are chosen by the heads of the various engineering departments along with the department's society. Seniors who are active in the department's activities are foremost in these selections.

Along with the knighting of seniors as Knights of St. Pat, sixteen freshmen will also be inducted as Companions of St. Pat. These freshmen, two from each department, are selected by the heads of the departments, on a scholastic, activity, and interest basis.

An additional feature at the knighting will be the induction of four of North Carolina's outstanding citizens as Knights of St. Pat, bestowing upon them an honorary and well-deserved title.

Receiving the honorary knighting will be Dr. John W. Cell, associate professor of mathematics;

Prof. F. F. Groseclose, professor of Industrial Engineering; Prof. C. N. Sanford, instructor in Mechanical Engineering, and Mr. Roy Williamson, Commissioner of Public Works of the City of Raleigh.

Last year Governor Clyde R. Hoey was knighted at the ceremony, and the list of honorary "knighthoods" includes many of the state's foremost citizens.

## Late News Flash!

A late news report coming in via telephone from an unidentified source last night stated that more than one hundred Meredith girls had been placed on strict campus because of a minor infraction of the rules. All attempts to get the true facts of the case were fruitless.

## CONGRATULATIONS, ENGINEERS! . . .

Make Our Store Your "SOCIAL Center" during Fair Week

## WALGREENS, Inc.

"DRUGS OF REPUTATION"

## Congratulations



HAL F. RANDOLPH  
President  
Engineers' Council

to YOU  
and  
The COUNCIL  
and to  
The Engineering Students  
on the  
Fourteenth Annual Fair

Make Your Headquarters on the Campus at

## Students SUPPLY STORE

L. L. IVEY, Manager

We have been Printing for N. C. State for a quarter of a century . . .

We know what you want, and how you want it!

Capital PRINTING COMPANY

110 W. Hargett

Dial 8316

**APPLYING THE FINISHING TOUCHES** The pictures below show students working on a few of the hundreds of exhibits that will be open today to the public for the 14th annual Engineers' Fair.

In the top picture you see Bruce E. Lewis of Raleigh, junior in mechanical engineering, preparing a steam engine for display, which will be shown in the mechanical engineering department.

Electricity will also cut capers for visitors to the Fair in the electrical engineering department, which will also show the results of modern technical education. In the center picture I. M. Vann, Jr., of Clinton, a senior in electrical engineering, is shown at a test board from which some of the electrical magic will be controlled.

The photograph at the bottom shows students working on the wind tunnel in the aeronautics laboratory, where visitors may also see actual and model airplanes in operation. The two students are J. W. Brandon, left, of Cramerton, and Frank J. Zerilli of Brooklyn, N. Y., both seniors in aeronautics.

Similar exhibits will be presented by all eight departments in the School of Engineering, and the exhibits will be on display from 2 o'clock this afternoon until 10 o'clock tonight.

### Engineers Invite Hundred Delegates From High Schools

**Council Will Give Free Trips to Annual Fair to Large Number of Students**

The Engineering School of State College will play host today and tomorrow to approximately 100 high school students who will undoubtedly have the time of their lives visiting the 14th annual Engineers' Fair.

Earlier in the year the Council sent letters to the principals of the leading high schools in the State, and asked for him to select two of the most promising seniors who were interested in a technical education. To these two selected students the Council is giving a trip to the Fair with all expenses paid while in the Capital City.

One representative high school senior was also sought from each county school to visit State College.

While in Raleigh the high school students will be accompanied and entertained by alternate members of the Engineers' Council and the Companions of St. Pat.

A special luncheon will honor the high school visitors today at 1 o'clock in the college cafeteria, after which they will take a trip all through the Fair.

Saturday morning the visitors will be given a movie in the College YMCA, after which they will meet Dean Blake R. Van Leer, head of the Engineering School.

The high school students have been invited to remain for the Engineers' Brawl tomorrow night, and a large portion of them will be present for that event.

### Awards Announced For Best Exhibits

**Engineers' Council to Give Prizes for Best Project in Each Department**

As an added incentive for student work on the Engineers' Fair, the Engineers' Council each year offers three prizes for the best exhibit in each department.

The exhibits are judged individually by a committee of local engineers appointed or selected by the council, and a separate judging committee is secured for each department.

First prize for each department will be eight dollars cash, second prize being four dollars cash, and one dollar and one-half in merchandise.

Third prize consists of one dollar and one-half in cash and three dollars in merchandise.

Announcement of the winners and the awarding of prizes will take place immediately following the knighting ceremony tomorrow evening in Frank Thompson gym.

### Thad Eure To Open Fourteenth Fair

**Ceremonies to Take Place Around Tower; Route of Visitors Given**

When Secretary of State Thad Eure walks up to the front of Primrose Hall today and opens an enormous book which will stand in front of the building, he will officially open the 14th annual Engineers' Fair. Opening ceremonies, which will take place around the Memorial Tower and Primrose, have been carefully handled by Theta Tau, honorary professional engineering fraternity.

A large number of honorary speakers have been invited to attend the opening exercises, which

### RESPONSIBLE FOR THE FAIR

Pictured below are the members of the Engineers' Council who are responsible for the planning of the fair this year. The Council is composed of two representatives from each of the eight departments in the School of Engineering.

Reading from left to right, are, top row: Ross I. Edwards, M. M. Dalton, P. P. Gregg, Bruce Hildebrand and E. H. Johnson. Middle row: M. E. Watson, Forest Paschal, Hal Randolph, J. V. Hamme, and W. D. Sharp. Bottom row: F. C. Cunningham, Louis Fletcher, R. B. Reeves, H. R. Crawford, F. O. Truslow, and L. N. Boney.



EDWARDS DALTON GREGG HILDEBRAND JOHNSON  
WATSON PASCHAL RANDOLPH HAMME SHARP  
CUNNINGHAM FLETCHER REEVES CRAWFORD TRUSLOW BONEY

will be broadcast over radio station WRAL for a short period. The broadcast will take place at the tower.

Starting at the scene of the Fair opening, the Geology building, the visitors will follow a route of arrows to the chemical engineering department. From there they will travel to the architectural, electrical and civil departments, and will go upstairs in the civil building for the exhibits of the industrial engineers.

Leaving the civil engineering building, the route will carry the visitors to the department of mechanical engineering, aeronautical engineering, and will finally lead to the ceramic engineering building, where the Fair will end.

Information booths will be set up at strategic points along the route, and guides will also be on hand to furnish information and point out the route to the predicted 10,000 visitors.

The University of Illinois is constructing new campus buildings at a cost of \$3,400,000.

During the 1938-39 school year, 200 colleges created some 300 scholarships for foreign refugees.

### Congratulations, Engineers . . .

Meet your friends and enjoy a game—

### College Court Billiard Parlor

"CUTIE" MOSELEY, Proprietor "At the Court"

### Congratulations, Engineers! . . .

### LEE O. LAYTON, TAILOR

New Location: 8 1/2 W. Hargett St.  
Any Alteration to Any Suit  
Suits Hand Tailored . . . \$50.00 up  
Suits Made-to-Measure . . . \$22.50 up  
Wash Suits, \$12.50 up . . . Ladies' Suits, \$22.50 up  
Student Representative Wanted

### COST OF INSURANCE TO BUYERS ASSAYED

### SEC's Table for the TNEC Shows Wide Variation on a Policy in Various Companies

**RANGE \$33.05 TO \$118.95**

### Part of Difference Attributed to Conservative Procedures of Some Concerns

(Special to The New York Times)  
WASHINGTON, Feb. 28.—Striking variations in the net cost of life insurance to policy holders were disclosed today to the Temporary National Economic Committee in figures presented by Ernest J. Howe, chief financial adviser of the insurance section of the Securities and Exchange Commission.

Taking as a standard a whole life policy issued at age 35 and surrendered at the end of the twentieth year, Mr. Howe showed the "historical cost," the actual cost of such a policy surrendered in 1935, to have ranged from \$33.05 to \$118.95, a \$1,000 in various companies. He admitted, however, that these figures were "pure history" and nothing else, explaining that policies issued in 1910 were sold on a basis often not available today and that the figures did not represent either the present position or the future outlook of the companies listed.

To make up so far as possible for this he offered another table showing the cost of a \$1,000 of the same type of policy at the end of twenty years on the basis of 1935 conditions respect-

ing rates and dividends. These figures ranged from \$46.20 to \$153.94 a \$1,000 a year.

**Publication Protested**  
The top figure was for the Mutual Life of New York, which wrote to the committee protesting the publication on the ground that it gave a false impression. Mr. Howe admitted that the fact that the Mutual Life substantially reduced its dividends in 1939, although it raised them in 1940—three the figures for this company out of line of those for its past history and its probable future one. The historical cost of a mutual policy was shown by the other table to be \$71.32 a \$1,000, a cost exceeded by nine other major life companies.

The top figure of \$118.95 in the historical cost table was that of the Pacific Mutual. Mr. Howe said this undoubtedly was explained by the financial difficulties which led to the company's reorganization in 1936.

Of a percentage comparison between 1939 cost and the historical cost figures for the other companies, the witness said, "the comparison, while interesting, may not be as significant as might be imagined."

**Table on Policy Cost**  
Eliminating this percentage comparison, Mr. Howe's table was as follows:

Company	1939 Net Scale Cost	Historical Net Scale Cost
Aetna	\$79.90	\$81.14
Bankers Life	86.32	90.27
Connecticut General	92.44	99.56
Connecticut Mutual	87.94	72.47
Equitable of New York	82.60	51.48
Equitable of Iowa	78.67	73.92
Guardian Life	100.75	73.92
John Hancock	88.80	88.71
Massachusetts Mutual	91.67	45.12
Metropolitan	88.20	41.41
Mutual Benefit	88.99	53.78
Mutual of New York	123.94	71.32
National Life	65.91	62.17
New England Mutual	65.29	55.07
Northwestern	66.69	53.05
Northwestern	59.81	35.19
Northwestern	66.49	18.56
Peen Mutual	72.58	51.19
Phoenix Mutual	93.22	69.76
Provident Mutual	81.29	55.19
Prudential	67.23	69.68
State Mutual	91.52	62.17
Union Central	105.91	90.45

The witness said that while the table took account of all policy provisions assessable to mathematical evaluation, there were obviously other factors which properly might animate a policy holder to desire something other than the lowest net cost policy. He pointed out, for example, that non-participating companies contended that because of the persistent decline in interest rates, participating companies in the future might be obliged to cut their dividend scales, even below the 1939 basis and held it unfair to compare their indefinite net costs with participating policy net costs under these circumstances.

"Only the future," he added, "can determine how valid this argument may be."

**Accounting Variations**  
Some companies, Mr. Howe explained, might improve the relative appearance of their net cost figures by paying more dividends than current earnings would seem to justify. On the other hand, he continued, other companies, by realistically valuing their assets, conservatively calculating their liabilities, adding to contingency reserves and paying out smaller amounts in dividends than currently were being earned, in a given year or period of years might appear in a less favorable light than their less conservative competitors.

Mr. Howe added that an "outstanding example" of conservative valuation of assets was that of the New York Life, which had bolstered this conservatism also by setting up a contingency reserve which on Dec. 31 amounted to \$50,000,000.

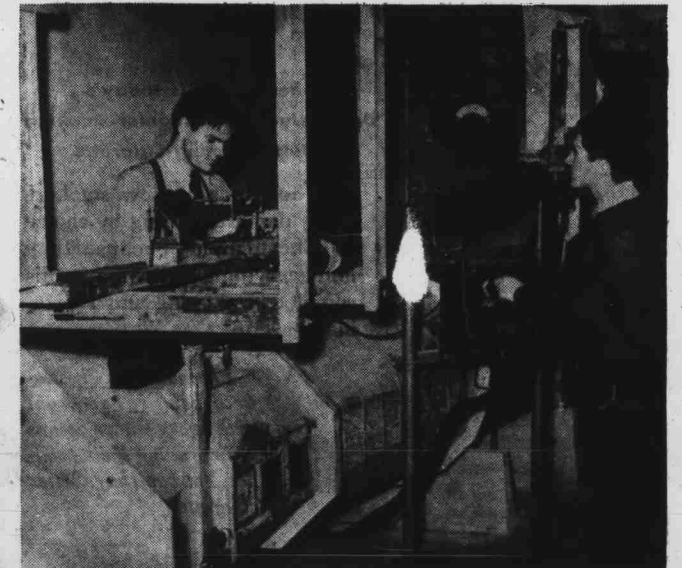
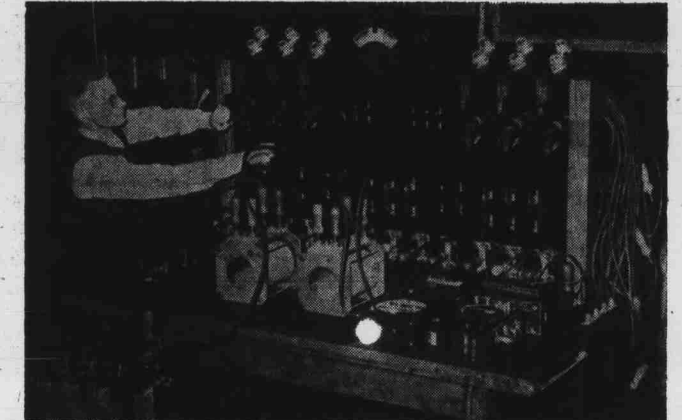
Earlier in the day the committee held a review of the reasons for the failure of nineteen insurance companies between 1931 and 1939 from Alfred M. Best of New York, head of an insurance publications concern.

Mr. Best said that in virtually every case the chief reason for failure was bad investment judgment. He added, however, that the depression also had taken place some of the companies that failed "broken" could have survived their bad judgment. He asserted that "on the whole, most of the companies came through the depression very comfortably." He described the defunct concerns as those "on the fringe" of the industry.

(Copied from New York Times, March 1, 1940)

### J. MARSHAL BARBER and JOHN B. HILL

Special Agents  
**New York Life Insurance Co.**  
Odd Fellows Building — Phone 2-3268  
RALEIGH, N. C.



### Lester To Speak On War Conduct

Muriel Lester of London, England, will address a community service at the First Baptist Church Monday at 8 p. m. on the subject, "How to Keep Steady in War Time."

Miss Lester, whose address is sponsored by the Raleigh Ministerial Association, has gained world recognition as the founder and director of Kingsley Hall in London's slum area and as the author of many books. She spoke in Raleigh for the National Preaching Mission in 1937.

The Raleigh Ministerial Association extends a special invitation to State College students to attend the service and hear Miss Lester.

The Hendrix College news bureau last year sent out 850 stories about the school's activities and personalities.

New York City's four municipal colleges enroll more than 62,000 students yearly.

### For the BEST . . .

### COLLEGE COURT BARBER SHOP

"At the Court"  
This week's lucky names:  
(1) M. B. HOLLAND  
(2) I. L. LINTEN  
(3) I. W. EDGERTON  
These men get a free haircut with this ad and their registration card.

### FINE'S MEN'S SHOP

Sport Shirts  
With Long Sleeves  
\$1.35, \$1.65, \$1.95  
Cor. Fayetteville & Hargett

### Congratulations, Engineers! . . .

From  
**STEIN'S**  
America's Greatest Clothiers  
\$15.00  
All Wool—All One Price  
238 FAYETTEVILLE ST.

TO PLAY FOR AG BARNWARMING

One of the features of the Clemson College Junglers, which has been chosen to play for the annual Ag Barnwarming, is this Junglect Quintette shown below.



GUARDIANS OF STUDENT HEALTH

The responsibility for the welfare and good health of the entire State College student body rests with the five persons shown below, who compose the staff of the College infirmary.



DR. A. C. CAMPBELL



MISS VERNA HARVARD



MRS. C. C. BROOKS



MISS ALLENE MAYES

Future Farmers Hold Elections

C. I. Harris Chosen President of Organization for Spring Quarter

The State College chapter of the Future Farmers of America held its spring elections Monday night and chose C. I. Harris as president of the organization, while Howell Stroup was selected as vice-president.

Other officers elected at the meeting are Vaden B. Hairr, secretary; Robert C. Vause, reporter; Leon E. Cook, chapter advisor; Ed Greene, watch dog; and C. L. Batten, Jr., chairman of the program committee.

Since the seniors were engaged in practice teaching late in the winter term, the elections were postponed until this week. Plans were made at the meeting for a social event to be held soon at one of the lakes near Raleigh. The seniors were given an opportunity to relate some of their experiences as practice teachers.

EARN \$50 WEEK DURING SUMMER OR YEAR-ROUND

We can use several reliable college men, during summer or full time, to operate movie circuits in theatrical communities. Earnings \$50.00 a week and better. Projection equipment, sound films, everything furnished. No experience needed. For complete information write immediately to Southern Visual Equipment Co., Box 2404, Memphis, Tennessee.

Application PHOTOS

10% DISCOUNT to State Students HAYNES' Studio Over Grant's Phone 7612

After the Brawl

Visit the ASTOR GRILL Sandwiches and Hamburgers Prompt Service

Paget To Attend Forensic Meetings

Debate Team Coach Will Attend Knoxville Tournament and Teachers' Meet

A number of speaking engagements for Prof. Edwin H. Paget, director of forensics at State College, were announced yesterday. He will address the Asheville Kiwanis Club today on the motivating process as a means of influencing people in public and private speech.

Kappa Phi Kappa Inducts Nine Men

Tenn., April 2-5, for the Southern Championship Debate Tournament and the annual meeting of the Southern Association of Teachers of Speech. He will supervise the direct clash debate section of the tournament.

Professional Education Fraternity Initiates Dr. Clyde A. Erwin at Breakfast Meeting

The Alpha Sigma chapter of Kappa Phi Kappa, professional education fraternity, initiated nine alumni to membership at a breakfast meeting Friday.

Koo To Inaugurate Project To Help Foreign Students

International Statesman to Speak on Education in Europe and China

Dr. T. Z. Koo, of St. John's University, Shanghai, secretary of the World's Student Christian Federation, will speak in Pullen Hall Tuesday at 8 p. m. on the subject, "The Blackout of Education in Europe and the Far East."

Koo will appear under the joint sponsorship of Blue Key, Pine Burr, the Student Council, Alpha Zeta, Tau Beta Pi, and the YMCA Cabinet as a part of their project for raising funds for the relief of foreign students.

S - T - A - T - E

Again Today and Saturday "GERONIMO" with Preston Foster-Andy Devine Ellen Drew Plus "Information Please" Act and News

Sun., Mon., Tues. DOUGLAS FAIRBANKS, JR. in "RULERS OF THE SEA" with Margaret Lockwood-Will Fyffe Plus Travelogue-Act-News

WAKE

Saturday "Smashing the Spying" with Ralph Bellamy-Fay Wray Sunday and Monday "Blondie Brings Up Baby" with Penny Singleton-Arthur Lake

ON BORROWED TIME

Wednesday "On Borrowed Time" with Lionel Barrymore-Bobs Watson

AMBASSADOR

Again Today and Saturday MICKEY ROONEY as "YOUNG TOM EDISON" Virginia Wedgler-Fay Bainter George Bancroft Plus Pete Smith Act Cartoon and News Wanna Have a Lot of Fun? Attend Our Third Annual APRIL POOL'S REVUE Sunday Night-11:30 p.m.

Sun., Mon., Tues. MARGARET SULLAVAN JAMES STEWART in Ernst Lubitch's "SHOP AROUND THE CORNER" Plus Cartoon and News Beginning Wednesday ERROL FLYNN Miriam Hopkins-Rand. Scott in "VIRGINIA CITY"

CAPITOL

Today and Saturday THREE MESQUITEERS in "HEROES OF THE SADDLE" Also Serial and Cartoon Sunday Only "JESSE JAMES" Tyrone Power-Honey Fonda Monday and Tuesday "NINOTCHKA" Greta Garbo-Melvyn Douglas

PALACE

Today and Saturday Victor McLaglen-Jackie Cooper in "BIG GUY" Also 1st Chapter New Serial "THE GREEN HORNET" Held Over! Sun., Mon., Tues. MICKEY ROONEY as "YOUNG TOM EDISON" Virginia Wedgler-Fay Bainter Plus Pete Smith Act Cartoon and News Coming: Friday and Saturday Russell Hayden-Jean Parker "KNIGHTS OF THE RANGE"

Congratulations Engineers... from DANIEL & SMITH STUDIO 134 1/2 Fayetteville Street Phone 8092 APPLICATION PICTURES 6 for \$1.50 From Your Agromeck Proof

Thousands To Visit Campus For Annual Engineers' Fair

(Continued from page 1)

mony will begin at 8 o'clock and the dance immediately afterwards. Serving with Randolph on the Engineers Council are M. M. Dalton of Durham, vice president; B. A. Hildebrand of Statesville, secretary; P. Forcher Gregg of Florence, S. C., treasurer; M. E. Wat-

son, Winston-Salem; W. D. Sharp, Greensboro; R. B. Reeves, Raleigh; Leslie N. Boney, Wilmington; Frank O. Truslow, Draper; E. H. Johnson, Angier; F. C. Cunningham, Raleigh; Lewis A. Fletcher, Raleigh; H. R. Crawford, Hendersonville; Ross I. Edwards, Charlotte; J. V. Hamme, Oxford, and Forrest A. Paschel, Siler City.

Judges Prizes will be awarded for outstanding exhibits. Judges for the various departments will be J. M. Peden, Roy Williamson, and J. D. Clark, ceramic; James S. Burch, B. W. Davis, and W. Vance Baise, civil; R. M. Rothgeb, J. T. Anderson, and W. C. Olson, mechanical; W. R. Doer, Wade Gallant, and E. C. Dameron, electrical; Thomas W. Cooper, J. M. Edwards, Jr., and J. M. Page, Jr., architectural; J. T. Anderson, L. W. Duncan, and Virgil Couch, industrial; H. C. Bryson and Harry Davis, geological; J. W. Kellog, E. H. Harwood, E. G. Sinclair, Jr., and J. B. Thompson, chemical.

Congratulations, Engineers!... College Soda Shop HEADQUARTERS for Your EATS - During the Fair BEFORE and AFTER the Dance Phone 2-3723 "At the Court"

Special Offer One 8x10-inch Vignette Etching, Hand-Painted in Oil, for \$1.50 SELECTION OF FOUR PROOFS - Also special offer on application photos. CAROLINA STUDIOS Upstairs - Next to Western Union

AMERICA'S Number 1 Choice Chesterfield is today's Definitely Milder...Cooler-Smoking Better-Tasting Cigarette Thousands of new smokers every day are turning by choice to Chesterfields because they find everything they want in this completely pleasing and satisfying cigarette. The makers of Chesterfield keep far in front with every known means of improving their product. You can't buy a better cigarette. Chesterfield America's Busiest Cigarette

Copyright 1940, LAGGETT & MYERS, TOBACCO CO.