

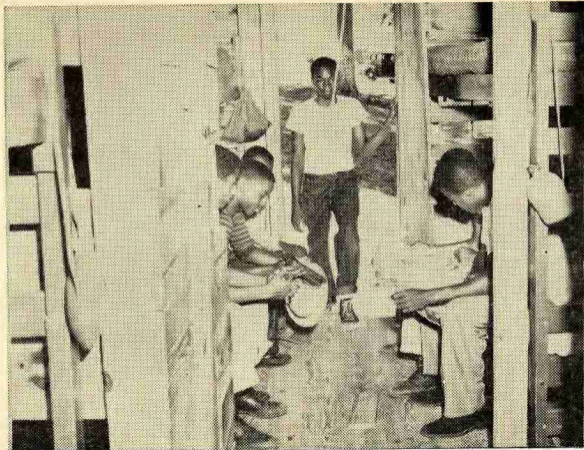
CAMP JOHN HOPE

Route 3

Fort Valley, Georgia



(Above) Swimming in Lake Lasseter



(Left) Life in The Cabins



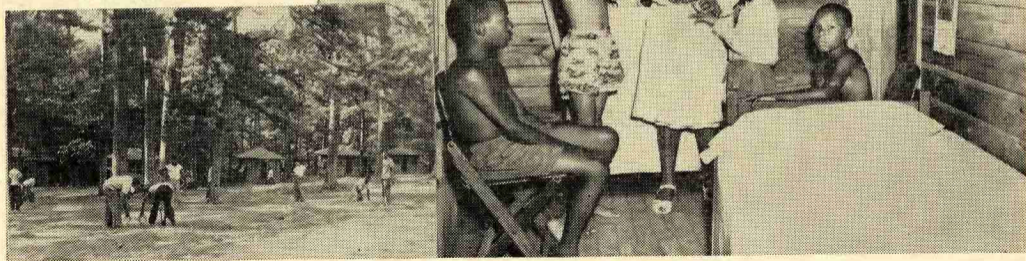




(Above) The Recreational Hour

(Right) Good Health is First

(Below) Horse Shoe Pitching A
Favorite Sport.



GENERAL INFORMATION

I. Location.—The Camp site is located on 222 acres of land near St. Louis Community, seven miles southwest of Fort Valley in Macon County, Georgia, about the center of the state, easily accessible to all sections.

II. Purposes.—

1. To advance the educational, social, physical and moral welfare of Negro youths in Georgia through the establishment and maintenance of camping and recreational center, and
2. Such center shall be available as a general meeting place for educational and religious conferences as well as for athletic events.

III. Description

About one-half of the 222 acres of land is covered with beautiful forest and woods, tall pines, heavy shade oaks, dogwoods, maples and gum trees. Approximately one hundred acres of the tract is open level land, furnishing adequate athletic facilities can accommodate 275 persons. A 2600 gallon water tank, a deep well furnishing artesian water, two athletic fields for baseball and softball, two volley ball courts, one basketball court, a horseshoe ring, a croquet court and two tennis courts provide health and recreation. In addition, there is a lake covering approximately twenty-five acres of ground which furnishes opportunity for swimming, boating and fishing.

MANAGEMENT

The Georgia State Coordinating committee
of the
State Department of Education
for
Camp John Hope

Dr. M. D. Collins, State Superintendent
of Schools
Mr. T. G. Walters, State Supervisor of
Agricultural Education
Mr. R. L. Cousins, Director, Division of
Negro Education
Miss Inez Wallace, State Supervisor of
Homemaking Education
Miss Daisy L. Lewis, Itinerant Teacher
Trainer, Homemaking Education for
Negro Schools
Mrs. S. P. Fugate, Head Itinerant Teacher
Trainer, Negro Schools
Mr. McKinley Wilson, Supervisor of NFA
Work, and Camp Director

OPERATING PERSONNEL

Camp Director
Camp Dietitian
Camp Caretaker
Camp Chef
Two Cooks
Camp Janitor
Camp Life Guard
Camp Nurse
Camp Secretary and Bookkeeper

Items Each Camper Should Bring to Camp:
Sheets
Pillow Case
Soap
Towel
Light blanket
Clothing suitable for camping and other
personal items desired.

Camping Season—June 1st through August
31st.

For further information, write the Camp Di-
rector, P. O. Box 488, Fort Valley, Georgia.