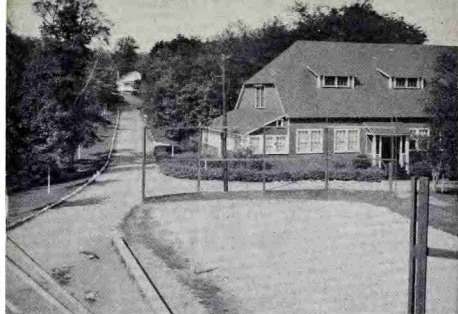


FOUNDED  
1921

# CAMP ATWATER





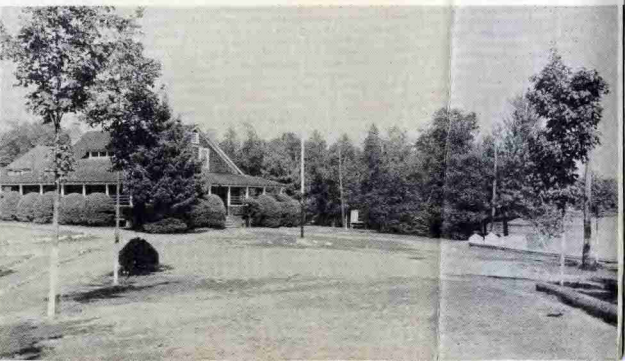
## THE CAMP

Camp Atwater is located on the banks of beautiful Lake Lashaway in the town of East Brookfield, Massachusetts. It is one of the oldest camps of its kind in the country. It was founded in 1920 by the late Dr. William N. DeBerry.

It is owned and operated by the Urban League of Springfield and has facilities for housing and feeding 200 campers at one time. The equipment is all modern and is so arranged as to guarantee efficient service to the camper at all times.

The fees are moderate and every effort is being made by the Board of Directors to maintain them at the present level in spite of the increased cost of operations.

The Staff is well qualified to render all types of service to the Camper. It consists of teachers, college graduates, college students and specialists who know children and are able to bring to the Camp athletic, esthetic and social skills with which to inspire the camper with their own zest for living.



# ACTIVITIES

SWIMMING INSTRUCTIONS  
LIFESAIVING TESTS

CANOEOING  
HIKING  
SOFTBALL  
BADMINTON  
VOLLEYBALL  
CHAPEL

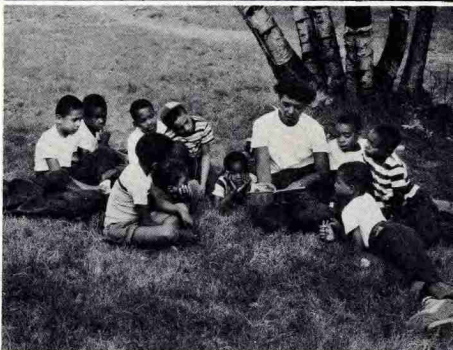
BOATING  
BASEBALL  
TENNIS  
HORSESHOES  
FISHING  
CAMP PAPER

TRACK and FIELD  
GROUP GAMES  
ARTS and CRAFTS  
FIRST AID INSTRUCTIONS

NATURE STUDY  
OVERNIGHT HIKES  
RIFLERY  
BASKETBALL  
GLEE CLUB  
SWIMMING MEETS

ARCHERY  
DIVING  
DRAMATICS  
CAMP CRAFT  
MOVIES  
BOXING

DANCING





FOR INFORMATION  
WRITE  
THE URBAN LEAGUE OF SPRINGFIELD  
33 OAK STREET  
SPRINGFIELD, MASSACHUSETTS