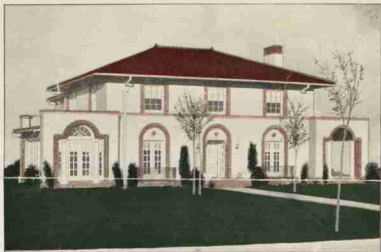


John J. Satchel

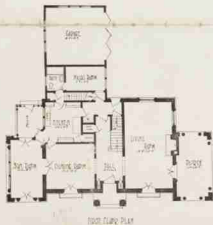


124-A

This beautiful home carries the lines of Spanish architecture and is particularly adaptable to many climates. With its red tile roof, brick arches and iron railings, it lends a touch of distinction together with strength and permanency. The walls are thirteen inches thick of hollow tile with stucco covering, and a low setting on a wide, level tract of ground lends greatly to the attractiveness of this home.

The ground level has large living, dining and sun-rooms with French doors to balconies, giving unusual light and ventilation. The kitchen is very complete, and the maid's room and bath are adjoining. There is also a two-car heated garage attached on ground level.

The second floor has master's bedroom with tiled bath and wardrobe adjoining, also two other bedrooms and large sleeping porch. A large tiled bathroom is accessible from the center hall.



124-B

The architectural design of this solidly built brick residence, makes it stand aloft from the ordinary type of brick homes. The proper blending of the front entrance with the entire front of the building, and the comfort and privacy of the large 'roomy' porch appeal at once to the home lover.

Upon entering this beautiful home, your attention is called to the attractiveness and convenience of its interior. The reception hall is separated from both the dining room and living room, by beautiful French doors, which if opened affords an ideal arrangement for entertaining when the occasion demands.

In the large well lighted living room, you will find with its access to either porch or library, the arrangement suggestive of real home comfort.

The large dining room affords ample space for china-closet, buffet and serving table, and is conveniently accessible to the kitchen where special attention has been given to built-in features.

Upstairs you will find four large bedrooms, so arranged as to provide the best ventilation, and conveniently located to these are the two bath rooms, and the five large closets, including the handy linen closet, accessible from the hall.

