

Negro Work

The results of Home Demonstration work for negroes in 7 counties will be found in the report of the Negro District Agent, Dazelle F. Lowe.

I

Agricultural Bldg.,
A. and T. College,
Greensboro, N. C.
December 16, 1930

Mrs. Jane S. McKimmon,
Assistant Director of Extension,
State College Station,
Raleigh, N. C.

Dear Mrs. McKimmon:

I have the honor of submitting my sixth
annual report of Extension work as conducted by the
Negro home demonstration agents for the year December
1, 1929 to December 1, 1930.

Respectfully submitted,

Dazelle F. Lowe

Dazelle F. Lowe,
District Agent.

DFL:S

TABLE OF CONTENTS

.....

	<u>PAGE</u>
I. Letter of Submittal-----	1
II. Organization of Extension Work in Counties -----	2-8
1. Status of district	
2. Development of Community Program.	
(a) Guilford (b) Wayne County (c) Alamance County	
3. Leaders School - How Leaders are Appointed.	
4. Plans of Work - How made and with Whom.	
III. Supervisory Program -----	9-17
1. 1930 Plans and Accomplishments	
2. Supervision of Field	
(a) Visits to Home Agents (b) Visits to Farm	
agents (c) Visits to Unorganized Territories	
3. Office Organization	
(a) County Agents (b) Condition and Needs of	
agents' offices	
4. Maintenance and Training of Personnel	
(a) Group Conferences (b) Cooperation with	
Specialists and Subject Matter Assistance	
5. Publicity Agency Used	
IV. Project Activities with Statistics -----	18-24
1. Garden Project (a) Guilford County - (b) Robeson County	
2. House Furnishing - Wake County	
3. Clothing and Welfare Projects - Mecklenburg County	
V. State-Wide Activities -----	25-34
1. Farm Women's Short Course 2. 4-H Team Demonstra-	
tion Contest 3. Boys' and Girls' Short Course	
4. Extension Summer School.	
VI. Map of District - Clubs and Enrollment -----	35
VII. Statistics of Reporting Agent.-----	36
VIII. Community House of Wake County -----	37

ORGANIZATION OF EXTENSION WORK IN COUNTIES.

1. Status of District:

There has been no change in the organization of the work in the counties. There are seven counties in the district.

The depression is felt especially when it comes to the County Board appropriating. The counties that need the work most are less inclined to appropriate. If the county funds are handled through the State, it is quite probable several new counties will come in.

There has been no threat or withdrawal of funds in the district. There are 72 women's clubs with an enrollment of 1361 women, 82 girls' clubs with an enrollment of 1992 girls and 8 community clubs with an enrollment of 156 members.

There has been no change made in the district. Special attention has been paid to the organization of work in the counties by the reporting agent and the State agent has functioned in this way. First, a close observation was made by the reporting of the plans of the county agents as to the territory the agent was covering, the functioning of the local organizations, and the formation of both adult and junior councils. A report of findings was discussed with the State agent and supervising plans made to fit the county requirements. The County Commissioners are asked for criticisms and suggestions. They say, when consulted, that the agent is doing good work.

These plans were changed as the State agent thought best and O. K.

The State agent, besides holding private conferences has visited the field of the county agents. Robeson county home agent reports Mrs. McKimmon's visit to her field at her Achievement Day exercises. Wayne county home agent reports a visit to her from the State Club agent during her 4-H club round-up and doll dress contest.

2. Development of Community Programs:

Community programs have been developed in three counties. There are eight organized counties in the district.

(a) Guilford County: In Guilford county the community carry on a program for the development of the community in general. Recreation is the main feature of one club. Woody Side community club created the idea of club visit. This idea has grown popular through the county. After the program which consisted of inspirational talks, songs, music and a practical demonstration, refreshments are served. This club visit might well be called "Good Will" visit because little community jealousy and feeling disappear by the contact.

(b) Wayne County: In Wayne county the community organization has no president, secretary appointed but instead eight committees were formed - allowing each committee and chairman to select a committee of five or seven people to represent each section of the community. The committees are Community Spirit,

II-B

Health and Sanitation, Homes, Religion and Morals, Education, Agriculture, Community, and Economics and Business.

(c) Alamance County: In Alamance county after determining the program of work for the county the women of Melville community were asked to come together and discuss the needs of their community. Suggestions were offered and written on the black board; necessary additions and eliminations made, and the program made and carried out as shown below.

Melville Community Plan of Work - C. S. Wilson, Home Agent, Graham, N.C

Project	Problems	Remedies	Goals	Local Leaders	Specialist	Achievement
Foundation Dress Pattern	Lack of color, harmony, Untidy appearance Lack of personal charm	Every family a good fitting pattern, Every member a clearer understanding of how to select and plan the family's clothing	Cut 8 patterns Every family using better color harmony. Every member make a dress from the pattern	Mrs. D. Wilson Mrs. A. Worth	Did not use any	7 patterns drafted, 18 dresses made from these patterns 7 families using better color harmony
Foods & Nutrition	Undesirable food & health habits resulting over weight and constipation	More milk, fruit eggs, & vegetables, more water in the diet Greater knowledge of food values, better methods of conservation & preparation	Every family a year round garden, more fruits, a canning budget, a flock of poultry and 2 cows to a family			12 families grew year round gardens; 4 families grew new vegetables; 12 families own cows and 6 of these have 2 cows; 4 families serving extra fruit 8 families have improved poultry flock
Minor Projects Beautification of home grounds	This project was a failure this year on account of weather conditions, etc.					

Melville Community Plan of Work - C. S. Wilson, Home Agent, Graham, N. C.

Pro- ject	Prob- lems	Reme- dies	Goals	Local Leaders	Spec -ialist	Achiev -ment
--------------	---------------	---------------	-------	------------------	-----------------	-----------------

Community
Fair

County
Fair

State Fair

Arrange-
ment of
exhibits

These women worked hard & put on exhibits at home, county and State. They won \$10.00 at the County Fair, and \$30.00 at the State Fair. For the best individual Farm woman's exhibit.

3. Leaders' Schools and How Leaders are Appointed:

Leaders schools conducted in the district by the agents - Attendance 240. Leaders schools have been conducted in all of the counties. The classes are held once a month in the County agent's office or home.

In all projects conducted the home agents are assisted by leaders. Leaders are usually appointed by common consent of the club members. In case the members are timid in offering names, the agents are able to tell the willing and best workers. They are asked to be a leader in the named project. The leaders are given special instructions once a month at the County seat.

It is absolutely true that leaders are a help to the County agents. This year all agents attended the extension summer school with the exception of one who was away on leave of absence. During the agent's leave of absence practically all the regular meetings were conducted in food conservation by leaders.

There is no doubt that the use of leaders is successful. On page #5 in Alamance county home agent's report is the picture of Lillian Jeffries, one of the best club leaders in the county. She has canned the entire amount needed for her family of 6 for three consecutive years. She has assisted other members of the club in her community in canning, preserving and pickling. She has done both fancy and practical packs for exhibition purposes and she put on a beautiful display of canned goods at the Mebane Six Counties Fair and won a prize of \$20.00. Lillian has been a very successful leader because she believed in not only saying, but doing as well.

4. Plans of Work - How made and with Whom:

All agents made plans and adhered closely to them.

The plans are first discussed with the various clubs in the community. After the agent has an idea of what the different clubs desire to work on, the project and program are worked out with the Specialist. Each agent makes out the county program or project directly with the Specialist. Then during the County Council meetings the plans are accepted or changed to suit the people and adopted.

The reporting agent carries with her during her visits to the counties copies of the agents' plans and has seen that they were carried out.

III

SUPERVISORY PROGRAM

1. 1930 Plans and Accomplishments:

Plans

Accomplishments

1. MAINTENANCE and Training of personnel.

(a) To keep in force the appropriations that are at present included in the budgets of the seven counties in the State, namely: Alamance, Columbus, Guilford, Mecklenburg, Robeson, Wake and Wayne.

All appropriations renewed - nothing done.

(b) To add one county to the district under Capper-Ketchen funds if the State appropriations will permit.

(c) To train new agents through observation of the work in organized counties.

This accomplished thru Extension Summer school

(d) To have the agent in Robeson county attend Summer school and observe work in a well organized county to increase her efficiency.

This accomplished - Agent attended Extension Summer school - received better instructions there than regular Summer school.

2. PROGRAM DETERMINATION.

(a) To have all counties adopt the farm home standards as set forth in the North Carolina "Live-at-Home" program.

This accomplished - reports show "Live-at-Home" program.

(b) To have all agents follow the long time plan of work as outlined, choosing one major project to be carried on with the assistance of the Specialists and leaders.

This accomplished.

(c) To urge the making of a community program for one community in each county. Page 8 - Chart - Extension Circ. 169.

Alamance, Guilford and Wayne made community programs for one community.

(d) Have each county train a team in canning or some other demonstration selected by the agent.

All counties trained Demonstration teams.

PLANS

ACCOMPLISHMENTS

(e) To have Guilford and Robeson counties put on a county-wide campaign in gardening and poultry.

This was accomplished.

3. SUBJECT MATTER ASSISTANCE.

(a) To hold group meetings for agents with the Specialists to give the agents specific instructions in presenting methods to leaders in their counties.

Three group meetings were conducted for the agents with the Specialists.

(b) To have each agent conduct a leaders' school in her county monthly.

Leaders' schools were conducted in Alamance, Wake, Wayne and Robeson counties.

(c) To give assistance to agents by scoring and judging in contest and at fairs. To answer any emergency calls.

This was done.

4. ORGANIZATION.

(a) To have an active county council in every organized county to assist the agent in furthering home demonstration work. This was accomplished by all counties. 7

(b) To organize a junior council in counties.

This was done in Wayne, Robeson, and Columbus counties.

5. RECORDS AND REPORTS.

(a) To have agents keep accurate reports and send them in promptly.

This has been done satisfactorily by Alamance, Guilford, Wake, Wayne and Robeson.

(b) To have agents preserve records and keep them filed properly.

Great improvement - much needed to be done.

(c) To give assistance to agents in making their annual reports.

This has been done.

III-b

2. Supervision of Field.

(a) Visits to Home Agents.

During the year twenty-six visits were made to home agents.

ALAMANCE COUNTY .

Three visits were made to Alamance county this year. 1- To hold a conference with the home agent. 2- To make club visits. 3- To give agent instructions in making annual report.

COLUMBUS COUNTY .

Four visits were made to Columbus county this year. 1- To make club visits. 2- To make club visits. 3- To attend a May Day festival at Chadbourne. 4- To judge at a Community Fair, and to give agent instructions in making annual report.

GUILFORD COUNTY.

Three visits were made to Guilford county this year. 1- To make club visits. 2- To make club visits. 3- To assist agent in making annual report.

MECKLENBURG COUNTY.

Three visits were made to Mecklenburg county this year. 1- To make club visits. 2- To make club visits. 3- To give instructions in making annual report, and to judge at a Community Fair at Lytle Grove.

ROBESON COUNTY.

Four visits were made to Robeson county this year. 1- To make club visits. 2- To make club visits with adult and junior clubs. 3- To make club visits. 4- To give instructions in making annual report.

Supervision of Field.

WAKE COUNTY.

Six visits were made to Wake county this year. 1- To attend a one-day Farm Institute. 2- To hold agents' group conference. 3- To make club visits and to address the county council. 4- Attended a May Day program and home demonstration house in Holly Springs. 5- To hold a conference with the home agent. 6- To give instructions in making annual report.

WAYNE COUNTY.

Three visits were made to Wayne county this year. 1- To make club visits. 2- To hold agents' group meeting and visit a home demonstration house. 3- To give instructions in making annual report.

(b) Visit to Farm Agents.

During the year three visits were made to farm agents.

Guilford County.

Attended and addressed a Farm Institute meeting held by the farm agent at Summerville, N. C.

GREENE COUNTY.

Gave a talk on the food value of corn and various ways of using at the farmers' meeting in Snow Hill, N. C., also served as judge at this meeting.

HARNETT COUNTY.

Conducted a two-day canning school for the local agent at the close of his garden contest in July. The schools were held at Lillington and Seminole.

Supervision of Field.

(c) Visit to Unorganized Territories.

The work which was started at the Memorial orphanage in Forsyth county for Negro boys and girls last year has been carried on through this year. Fifteen visits have been made to the home. The program which was carried out included: Proper diet and Meal planning, a budget system introduced, clothing, conservation of food, and soliciting shoes and clothing, and a barrel of apples to try to make the children happy for Thanksgiving

Three other visits were made in Forsyth county. They were:

1. To visit a leaders' school conducted by the home agent.
- 2- To attend a Parent-Teacher meeting.
- 3- To serve as judge at a county commencement conducted by the Jeanes Supervisor.

3. Office Organization.

(a) County Agents.

<u>County</u>	<u>Agent</u>	<u>OFFICE</u>	<u>Loca- tion</u>	<u>Labora- -tories</u>
Alamance	Mrs. C. S. Wilson	3rd Floor Court House	Graham	Yes
Columbus	Mrs. S. J. Williams	No office	Whiteville	None
Guilford	Miss A. M. Murray	Room 104 Agriculture Bldg. A. and T. College	Greensboro	None
Mecklenburg	Miss W. R. Laws	804 S. McDow- ell St.	Charlotte	None
Robeson	Mrs. L. M. Debnam	Rented Office	Lumberton	None
Wake	Mrs. B. M. Edwards	O'Kelly Bldg.	Raleigh	Yes
Wayne	Miss E. L. McDougald	Room at home 420 Canal St	Goldsboro	None

(b) Condition and Needs of Agents' Offices.

The offices of the county agents need be improved. Four of the seven agents have fairly well equipped offices. Only one had a file. None of the agents have a stenographer or clerical service. In office equipment the agents are in need of letter files, desk chairs, typewriters, book case, pens, pencils and ink.

All of the agents have gathered demonstration equipment of their own - other than Alamance, Guilford and Wake counties. Alamance, Guilford and Wake county board furnished the agents with some equipment.

Equipment for giving demonstrations in foods and nutrition and clothing, especially color, line and design ~~are~~ necessary for the agents to have in order to put over the work successfully. For foods the agents ^{must have} ~~use~~ canners, spoons, forks, measuring cups, mixing bowls, egg beaters, baking pans and double boilers. In clothing the agents ~~use~~ charts from Pictorial Review and McCall Pattern companies, and samples of Peter Pan to textile.

A motion picture projector would be an ideal equipment as it would bring before the people vivid pictures of what is needed and what could be accomplished.

4. Maintenance and Training of Personnel.

(a) Group Conferences.

Two district conferences have been held - in Wake and Wayne counties respectively..

Program of conference held in Raleigh March 14, 1930:

10 to 10.45 a. m. -- Miss Mary E. Thomas - Food Specialist

10.45 to 11.20 ----- Miss Cornelius - Girls' Club Leader

11.30 to 12.00 p. m. Miss Helen N. Esterbrook - Specialist
In House-Furnishings.

12.05 to 12.45 ----- Mrs. J. S. McKimmon and Mr. J. B.
Pierce.

12.50 to 2 p. m. ----Lunch

2 to 4 p. m. ----- Round-table discussion.

(b) Cooperation with Specialists.

Owing to the full program of the Specialists our group has not been able to secure them as much as desired; but agents have made out all of their programs of work under the direction of the Specialists at the district conferences.

The district agent has given subject matter to the county agents as follows: Farmers' Institute held at Snow Hill - the agent gave a demonstration in the uses of corn meal - emphasizing corn meal mush for breakfast cereal and different kinds of breads; a talk and round-table discussion on the food value of corn. Also judged the corn bread contest. This contest preceded a corn demonstration project for the county.

At the Farmers' Institute held in Summerville in Guilford county, a talk and demonstration were given on the value of vegetables in the diet.

Canning schools were held at Dunn, Lillington and Seminole in Harnett county. The attendance at the schools was approximately 175. These demonstrations followed the close of a garden contest and served to substantiate the "Live-at-Home" program. Beans, corn, tomatoes, okra, squash, and peas were the products canned.

The above are only a few examples of how the reporting agent gives subject matter assistance to the county agents.

In view of the fact that a four weeks school will be held for the next two years for county extension for ^{our} group it is not necessary to hold a two-weeks course in subject matter assistance, but it is very necessary that agents be given training in judging and scoring as they are called upon to judge community, county Fairs, group and county commencements.

5. Publicity Agency Used.

The agents are having less trouble getting publicity in their local papers and other Negro weekly papers. The Editor of the Carolina Times called a few days ago and stated that he would gladly publish news articles or announcements sent in. The Norfolk Journal and Guide, another Negro weekly paper has also written to this office requesting news articles.

PROJECT ACTIVITIES WITH STATISTICS.

Statistics from counties in district.

NO. Counties	NO. Adult Mem- bers enrolled	NO. 4-H Club Mem- bers enrolled	NO. Leaders	Food Preparation, Preservation and Nutrition					
				NO. Visits Specialist made to coun- ties	Leaders school by agent	Method Demon- strations	Result Demon- strations com- -pleted	Total Number Homes includ- ed in project.	
7	1402	2676	95	3	23	620	371	2265	
					<u>Clothing</u>				
7	1142	1950	69	6	12	553	208	986	
					<u>Home Management</u>				
5	483	653	29	0	5	75	59	425	
					<u>Home Furnishings</u>				
6	362	310	11	1	4	60	69	276	
					<u>Child Training and Care</u>				
6	30	0	0	0	0	220	13	232	
					<u>Home, Health and Sanitation</u>				
5	0	744	0	0	0	41	32	731	(Including home nursing (Sanitary closets, (screening controlling (insect.
					<u>Home Gardening</u>				
5	908	310	00	0	0	45	325	0	
					<u>Beautification of Home Grounds</u>				
2	262	89	00	0	0	3	50	0	
					<u>Poultry</u>				
1	232	383	0	0	0	2	2	14	
					<u>Agriculture and Home Engineering</u>				
				<u>NO. Dwellings remodeled</u>	<u>Hog % Houses</u>	<u>Poultry Houses</u>	<u>Dairy Barns</u>	<u>Water System In- stalled.</u>	
2	44	0		10	5	22	6	8	

12. Garden Project.

(a) Guilford County;

The first of the year the Governor of North Carolina sounded his live-at-home program. Believing in the live-at-home idea as advocated by His Excellency, the district agent sent out a special request to all agents to stress and put emphasis on the garden program. Circular letters and individual letters were sent to farm people to ask that enough be planted for their use and a surplus to can and supply the market. Gardens were stressed at every club meeting and gatherings. Guilford county is a splendid agricultural county with good soil and climate adapted to most vegetables. Even though the hot dry weather cut the gardens short the people who fell in line with the Governor's live-at-home plan are well fixed.

In making a survey this fall on Mr. and Mrs. W. C. Smith's farm, they have 250 cans of fruit and vegetables, two cows selling around \$6.00 worth of milk and butter each week, twenty bags of peas, which were threshed out would make three bushels, 9 bags of butter beans had put away, twenty bushels of sweet potatoes. Mr. and Mrs. Smith have no children and do not seem to be worried over the price of tobacco for he has a live-at-home farm with a year 'round garden. Mrs. Smith is the president of Zion Hill club, and is very active. Through her leadership this year the club met successfully and increased its membership to double its size.

(b) Robeson County:

This has been a banner year in gardens as well as in canning. Thirty-seven gardens were planted in the county-wide contest this year. Women and girls took and indeed it was a sight to see the

garden tour going around to judge these gardens in June. The district agent, Mr. J. W. Mitchell said, he had never seen such wonderful gardens in one county before. As a result of these gardens 157 jars of vegetables were exhibited at the County and Community Fairs this year and also quite a bit of fruit. From these gardens many vegetables were cooked and the men, women and children learned to eat carrots, spinach and many other kinds too numerous to mention. In this contest Mrs. Henrietta McColum of Hilly Branch won first prize and Cleo Bradley of route #3 Fairmont won second prize. Many valuable prizes were given to them. The merchants gave quite a number of these while other prizes were bought with money given by each contestant paying 25 cents to enter the contest. All seemed satisfied with the decision of the judges. It improved the health of the people to have year 'round gardens, and they always have something green growing in their gardens. One woman said, "I can see now why our home agent says eat more vegetables, more fruit and less meat. I have not bought a spring tonic since I have had a garden. God bless the farm and home agents and God bless the folks that sent them to us!"

2. House-Furnishings.

(a) Wake County.

Number of clubs participating - Women 6 - enrollment 27

Number of communities ----- 6

Number completing -----Women 5

House furnishing was taken as one of our major projects and demonstrations in house furnishings were given to six adult clubs. The women taking part in this project tried very hard to make improvements in and around their homes. Many yards were improved, furniture in rooms rearranged and walls white washed and some papered.

IV-c

There was no contest on but a few members did some outstanding work. Among these was Mrs. Tempie Justice, Route #1 Raleigh, N. C. who laid off her yard in the front attractively and planted ever-green shrubs, white washed the walls of her kitchen and refinished an old sideboard. Several homes put screens to doors and windows.

The Hollysprings club had a demonstration house which was very effective and inspiring to the people of that community. Several days were spent in preparing for that demonstration. A very humble home was used for this project. This was the home of Mrs. Ida Prince, an active leader of that club and a devout worker in that community. The day prior to the final demonstration on entering the house her husband said, "I never believed in home demonstration work much before last night." I inquired what had converted him; he said, "When I looked at my fire-place and saw how much better it looked I fell in love with the work." He as well as his wife put themselves in the spirit in the effort to make it a success. The whole community was represented on the day of the demonstration for the women had really worked to put the project over.

The cost of the improvements amounted to \$16.56. The picture below gives views of some improvements made.



3. Clothing.

(a) Clothing - Girls.

The major project for home demonstration work in Mecklenburg county was clothing. The thirty girl's clubs of 624 members made slips, gowns and bloomers.

Demonstrations were given in taking measurements, cutting patterns from newspapers and then cutting the material by the patterns

About one-half of the garments were made from unbleached muslin at six or eight cents per yard. The three garments cost between thirty-six and forty-eight cents per set. Some were made from better quality material. A few were made from large sacks which had been bleached and laundered.

The agent had several sample garments which had been bought ready made with the price on it. The garments were examined in each club as to the quality of material and workmanship. The girls were very interested to find in several instances that the bought garment had cost twice what their whole set of underwear was costing. They were proud to figure out what they ^{were} making in dollars and cents.

The girls seemed the proudest of the result demonstrations - garments they had cut from patterns and made at home for themselves or some other member of the family. These, in most instances, were creditable.

Clothing - Women.

In the women's clubs, slips, dresses, and children's clothes were made. The slips were made from measurements. The house dresses were made from commercial patterns. Each club bought one pattern for the agent's sewing kit. These the agent took to each club on club day. This proved a helpful and economical way of getting

patterns.

The women worked in groups of twos and threes. The dresses are cut, basted, and often partly sewed one club day and finished the next club day unless there has been a misfit. Then it is finished the third club day.

The women made the most improvement in fitting and neatness in sewing. Much of this comes through insisting on basting. The women, like the girls were interested in finding out the cost of the made article, comparing it with the store bought article and deciding how much they had saved. In nearly every instance it was compared with the price of labor of cotton. The women had many interesting make-over and combination days.

In the "make-over" days each member brought an old garment which had been already ripped up, washed and pressed to be made into something new. Many old woollen skirts were made into small boys' pants or some smaller girls' dress. At first these garments were articles of clothing that children kept quiet about, but later they were the most bragged of garments. They seemed to take the attitude that something clever had been accomplished.

On the "combination" days club members often exchanged pieces of cloth to make more suitable combinations. This created interest and exercised the cooperative spirit.

(b) Welfare Work - Mecklenburg County.

The Pineville club of twenty-one women and twenty-three girls has been very active in all lines of home demonstration work.

Last winter one of the members died leaving a husband who does not enjoy such good health and eight children with ages ranging from two to thirteen years. Having been a tenant on this farm for several years, Mr. Williams was allowed to keep his two-roomed hut and a small garden space. The farmers of the community, with the help of the agent, helped him to plant a garden with nine different vegetables in it which was sufficient food from May up until the present time. He now has a garden with three different vegetables in it. Other necessities have been furnished by the community.

The women meet at the home once monthly and do washing, cleaning, and cooking. Clothing was canvassed through the community and enough was collected to serve each child for the whole year. The clothing was left at the home of the president who lives near to be given out when really needed.

The most outstanding facts about this club are that the members live in very poor circumstances; not a colored family owns a foot of ground; very few of the parents have finished the two-roomed school there, but they cooperate and make much progress. The club has the highest attendance in the county.

STATE WIDE ACTIVITIES.

1. Farm Women's Short Course.

From forty to fifty women from five counties in the State carrying on home demonstration work met in their fourth annual meeting at A. and T. College, Greensboro, N. C. September 11-12. These women came from as far east as Columbus county.

A practical program was arranged, consisting of lectures, motion pictures, and tours of the college campus and farms.

On Thursday afternoon the meeting heard Mr. A. C. Kimrey, State Extension Specialist in Dairying, in a talk on practical methods for the caring and handling of milk in the home. Dr. F. D. Bluford, President of the College, heartily welcomed the women to the institution, and gave a few brief points on the growing importance of woman's work in the scheme of things and who wholeheartedly endorsed recent advances in education for women and girls through extension and vocational education.

Mr. C. E. Dean, an instructor in vocational education at the college made the chief address Thursday evening. He urged a closer contact between the home demonstration workers and the people on the farm; and stated that you cannot stay on the fence yourself and work with the people on the ground. Other speakers were: The district farm demonstration agent and dean M. F. Spaulding of the agricultural department.

On Friday morning tours were made of the buildings and the college farms. Professor T. S. Smith, Head of the Poultry department gave an excellent demonstration in poultry culling. Mrs. A. W. Holland, Supervisor of Elementary schools gave a talk on better homes and spoke of the domestic, religious and social phases of home life.

Mrs. Clawson of Little Hope of Mecklenburg county has given two excellent demonstrations on poultry culling as a result of the demonstration given at the short course. All the agent can hear from this community is, "Other counties shall not get ahead of Mecklenburg. We are going to have more to report next year." And then again, there is always something new that they heard at the short course. There was good advertisement in Mecklenburg county. Many members are looking forward to the next meeting.

The picture below shows the two women from Columbus who received certificates of merit for having attended four consecutive short courses.



V-b



The picture above shows demonstration in poultry culling at the Farm Women's short course.

2. Four - H Team Demonstration Contest.

In working out our programs and plans we thought it expedient to hold another team demonstration contest with the 4-H club girls in the seven counties in the district. This meeting was held at Shaw University November 7, 1930.

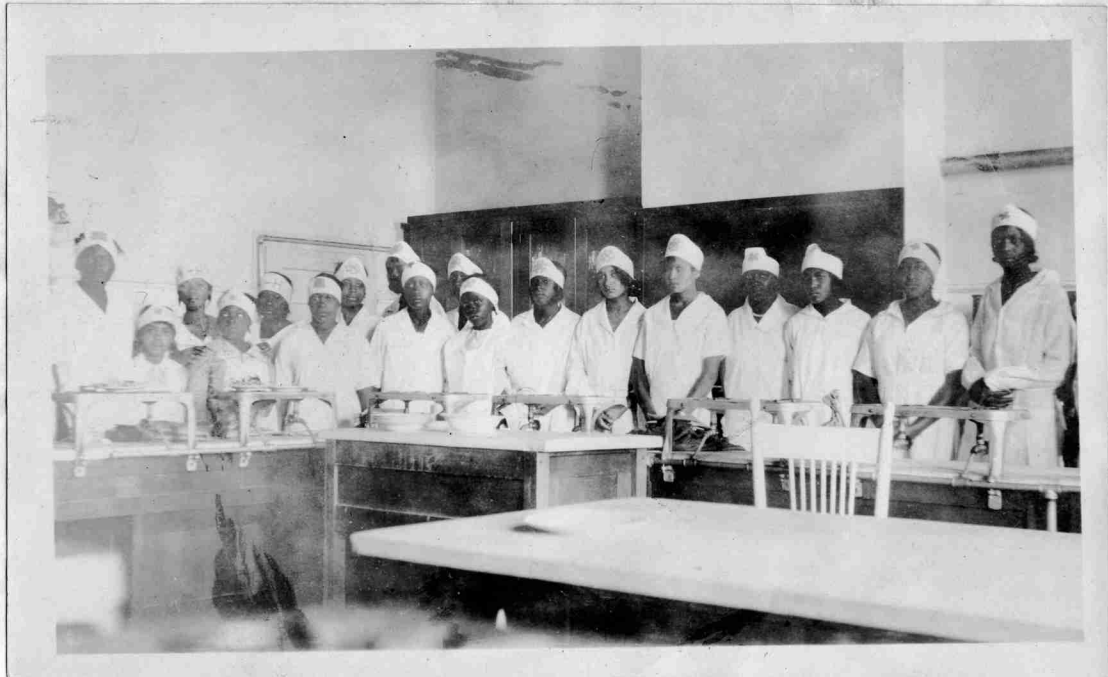
The demonstrations showed that the agents had worked diligently to make this contest a success. Seven teams contested - wearing the 4-H club uniform and cap. Each team was given a number which was used instead of calling them by counties. Wayne county which was number one led off with the demonstration in Carrot Marmalade; number two from Wayne county gave a demonstration in making paper flowers - sweet peas and roses; number three from Alamance county gave a demonstration in making mayonnaise salad dressing and preparing tomato and lettuce salad; number four from Mecklenburg county gave a demonstration in table setting, service and manners, number five from Guilford county gave a demonstration in preparing vegetable soup for the school lunch, number six from Robeson county gave a demonstration in beverages, and number seven from Wake county prepared the child's school lunch box.

Miss Elizabeth Cornelius, State Club Leader in Girls' club work, served as judge. She gave some very helpful suggestions that might be carried out.

The district home demonstration agent offered a cash prize of \$5.00 in gold to the team making the highest score, this was won by Mecklenburg county team which is the youngest county of the seven in the State for Negroes in Extension work. Dr. F. D. Bluford,

President of A. and T. College, donated \$2.50 in gold, this was awarded to Alamance county team which scored second highest, and Mrs. Jane S. McKimmon, Assistant Director of Extension, gave two dozen Atlas jars, these were awarded to Wayne county team number two which scored third highest.

Mrs. Jane S. McKimmon, Assistant Director of Extension, spoke very encouragingly to the group and commended the agents for the fine work they are doing in their respective counties. "I am glad that most of the demonstrations are with foods," she said. "The home demonstration division must play its part in putting over this program. "



Picture shows group of contestants at the 4-H Team Demonstration contest.



Picture shows Mecklenburg which won 1st place in Team Demonstration contest.



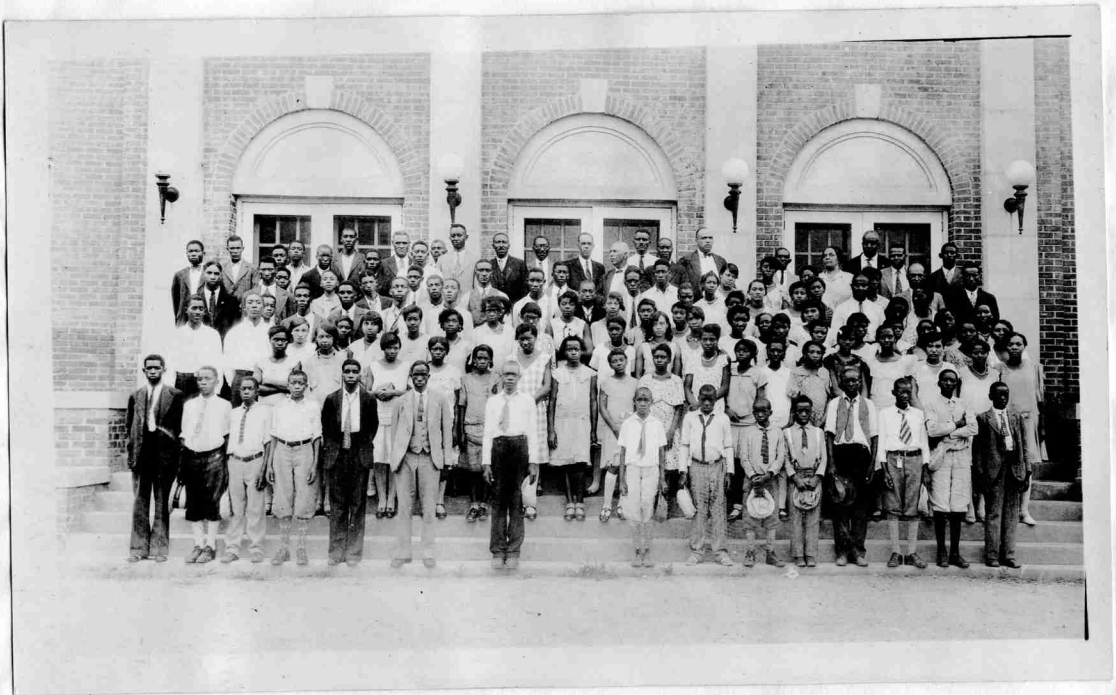
Picture shows Alamance county which won 2nd place in Team Demonstration contest.



Picture shows Wayne county which won third place in Team Demonstration contest.



Some of the other demonstrations.



4-H Group in attendance at the Boys' and Girls' Short Course.

3. Boys* and Girls* 4-H Short Course.

The annual State 4-H short course was held this year in Raleigh, N. C. at St. Augustine College, July 9-10-11. One hundred and twenty-seven registered, not including club members from Wake county who came in during the day to attend the sessions. The program was educational, inspirational and recreational, with one practical demonstration in canning by Mrs. Cornelia C. Morris, District Home Demonstration Agent (white) for the girls; and halter making for the boys. Thursday afternoon, Mr. Enloe, Manager of the State theater admitted all club members into the theater "free of charge." This was indeed a grand treat to the children because some of them had never visited a theater before. They were taken for a trolley car ride and to visit the State museum and Hall of history. This was one of the best sessions we have held notwithstanding the time was short.

The picture below shows the demonstration given at the 4-H short course.





Picture of the trolley car ride at the 4-H short course.



Picture of visit to State College in Raleigh while attending the 4-H short course.

4. From August 4 to 30 inclusive the state and county workers of Negro extension work were in attendance of the Extension summer school at Orangeburg, S. C. The school was financed through the generosity of Mr. Julius Rosenwald.

The course offered for women was as follows: Food preparation, food conservation, marketing, news writing, home dairying. News writing was the most interesting and helpful, and Food preparation stood next. A special two-weeks course was conducted by Mr. J. B. Pierce, Field Agent. This course dealt with Plans and Programs for county and state.

The second two weeks brought a change in courses for the women. They were as follows: Home improvement and rural sanitation, home poultry, gardening and fruits, beautifying home grounds, Extension methods and rural social organization and problems. The interesting thing about the course was that you were to take all the subjects outlined. The last two weeks were more practical than the first two weeks. Extension methods and rural organization were just what each worker wanted and needed. The home improvement and rural sanitation were the most practical pieces of work done. A very poorly kept crude home was started for improvement.

Dr. Shinn, and Dr. Graham from Washington, and other interesting speakers addressed the summer school.

Ala.	Ad.	<u>8</u>	En.	<u>79</u>	Jr.	<u>23</u>	Enrollment	<u>200</u>
Col.	"	<u>22</u>	"	<u>322</u>	"	<u>115</u>	"	<u>344</u>
Guilford	"	<u>8</u>	"	<u>232</u>	"	<u>14</u>	"	<u>416</u>
Meck.	"	<u>15</u>	"	<u>256</u>	"	<u>17</u>	"	<u>539</u>
Robeson	"	<u>10</u>	"	<u>329</u>	"	<u>17</u>	"	<u>385</u>
Wake	"	<u>14</u>	"	<u>253</u>	"	<u>8</u>	"	<u>79</u>
Wayne	"	<u>17</u>	"	<u>232</u>	"	<u>14</u>	"	<u>383</u>

Ala.	Ad.	<u>1</u>	En.	<u>10</u>	Jr.	<u>00</u>	Enrollment	<u>0</u>
Col.	"	1	"	20	"	1	"	37
Guilford	"	1	"	18	"	0	"	0
Meck.	"	1	"	47	"	0	"	0
Robeson	"	1	"	7	"	1	"	7
Wake	"	1	"	115	"	0	"	0
Wayne	"	1	"	148	"	1	"	12
Total	"	7	"	355	"	3	"	56

VII

Statistics of Activities of Reporting Agent.

Number of days in field -----	149
Number of days in office -----	112
Number of days annual leave -----	14
Number of days sick leave -----	7
Furlough -----	26
Number of visits to home agents -----	25
Number of visits to farm agents -----	3
Number of visits to unorganized counties -----	18
Number of Extension Committee meetings -----	5
Attendance -----	93
Number of other meetings attended -----	64
Attendance -----	8762
Number of conferences held -----	93
Number of letters written -----	222
Number of circular letters sent out -----	307
Number of articles for publication -----	7
Number of miles traveled by rail -----	3575
Number of miles traveled by Automobile -----	4178

COMMUNITY HOUSE OF WAKE COUNTY.

In the early part of the summer the women of the Good Hope club decided that they wanted a regular place to hold their meetings. They liked the idea of meeting from home to home, but as the families lived so far apart, they felt that the school would be a central location.

There was room at the school planned for domestic science but had no equipment except a few cooking utensils. The club women decided to purchase a stove so they might hold their meetings there. A committee of three women together with the home agent was appointed to look out for a stove and report to the club. This committee went to a Johnston county furniture store, as this community is near the county line and investigated prices. After telling our purpose and aim to the proprietor he took us through the store to show us what he had. The committee decided on a chose of a stove and an offer of a set of kitchen utensils was made by the gentleman if the club decided to make the purchase.

At the next meeting which was in June the committee reported. The club accepted the report and the women pledged themselves so much in order to make the purchase. They appealed to the Sunday schools and community at large. During the agent's leave of absence they held meetings and raised \$15.00. The school opened in October and they asked the aid of the Parent-Teacher Association - which promised to respond.

The cost of the stove is \$30.00 and they plan to install it by the next meeting. The women are working earnestly and we feel that much will be accomplished by their efforts.

COOPERATIVE EXTENSION WORK
IN
AGRICULTURE AND HOME ECONOMICS
STATE OF NORTH CAROLINA

NORTH CAROLINA STATE COLLEGE OF
AGRICULTURE AND ENGINEERING,
NORTH CAROLINA COUNTIES AND
UNITED STATES DEPARTMENT OF
AGRICULTURE, COOPERATING

EXTENSION SERVICE
HOME DEM. AGENT

NORTH CAROLINA HOME DEMONSTRATION AGENTS

Jan. 1, 1932.

Mrs. Jane S. McKimmon	Asst. Director of Extension	Raleigh
Mrs. Estelle T. Smith	Southeastern District Agent	"
Mrs. Cornelia C Morris	Northwestern District Agent	"
Miss Pauline Smith	Northeastern District Agent	"
Miss Ruth Current	Southwestern District Agent	"
Miss Helen Estabrook	House Furnishings & Home Management Specialist	Raleigh
Miss Mary E. Thomas	State Nutrition Specialist	"
Miss Willie N. Hunter	Clothing Specialist	"
Miss Myra D. Woodruff	Associate in Home Economics Research	"
Miss Emma Young	Secretary	"
Miss Eleanor Mason	State College Sta.	"
Miss Elizabeth Seawell	"	"

COUNTY	AGENTS	ADDRESS
Alamance	Miss Anamerle Arant	Graham
Anson	Mrs. Rosalind Redfearn	Wadesboro
Beaufort	Miss Violet Alexander	Washington
Bladen	Mrs. Lillie L. Hester	Elizabethtown
Brunswick	Miss Ada Walker	Southport
Buncombe	Miss M. Adna Edwards	Asheville
Burke & McDowell	Mrs. Marie Cox Matheson	Marion
Cabarrus	Miss Ruth Payne	Concord
Caldwell	Miss Mattie Lee Cooley	Lenoir
Carteret	Miss Ann Mason	Beaufort
Catawba	Miss Anna C. Rowe	Newton
Chowan	Miss Nelle Caldwell	Edenton
Cleveland	Mrs. Irma Wallace	Shelby
Columbus	Miss Emilene Cleveland	Whiteville
Cherokee & Clay	Mrs. Anne Lee Foard	Hayesville
Craven		
Cumberland	Miss Elizabeth Gainey	Hayetteville
Currituck	Miss Virginia Edwards	Currituck
Dare	Miss Alice Carter	Manteo
Davidson	Miss Sadie Hendley	Lexington
Duplin	Miss Carolyn Garrison	Kenansville
Durham	Miss Rose Elwood Bryan	Durham
Edgecombe	Miss Katherine Millsaps	Tarboro
Forsyth	Mrs. Elizabeth Tuttle	Winston-Salem
Franklin	Miss Anne Priest	Louisburg
Gaston	Miss Annie Broughton	Gastonia
Guilford	Miss Addie Houston	Greensboro
Halifax	Mrs. Hazel Ervin Wheeler	Roanoke Rapids
Hertford	Mrs. Grace P. Brown	Winton
Iredell	Miss Virginia Sloan	Statesville

(Over)

COOPERATIVE EXTENSION WORK
IN
AGRICULTURE AND HOME ECONOMICS
STATE OF NORTH CAROLINA

No 1931 List of Agents
J.S.M.K.

NORTH CAROLINA HOME DEMONSTRATION AGENTS

Jan. 1, 1932

COUNTY	AGENT	ADDRESS
Jackson & Swain	Miss Margaret J. Cobb	Sylva
Johnston	Miss Rachel Everett	Smithfield
Jones	Miss Alma Clay	Trenton
Lee	Miss Cornelia Simpson	Sanford
Madison	Miss Frances Crafton	Marshall
Mecklenburg	Miss Delano Wilson	Charlotte
Martin	Miss Lora Sleeper	Williamston
Moore	Mrs. Walter Ryals	Carthage
Nash	Mrs. Effie Gordon	Nashville
New Hanover	Miss Elizabeth Ragin	Wilmington
Northampton	Miss Kathleen Faison	Jackson
Onslow	Miss Sallie Brooks	Jacksonville
Pamlico	Mrs. Bessie C. Moore	Oriental
Pasquotank	Miss Maude L. Hodges	Elizabeth Cit
Pender	Miss Hazel Swinson	Burgaw
Pitt	Miss Ethel Nice	Greenville
Polk	Miss Florence Cox	Columbus
Richmond	Mrs. Anna Lea Harris	Rockingham
Robeson	Miss Hallie Prather	Lumberton
Rockingham	Miss Marjorie Holmes	Reidsville
Rowan	Miss Mamie Whisnant	Salisbury
Rutherford	Miss Laura Howard	Rutherfordton
Sampson	Miss Minnie L. Garrison	Clinton
Scotland	Miss Julia McIver	Laurinburg
Stanly	Miss Elizabeth Bridge	Albemarle
Surry & Stokes	Mrs. Margaret Barber	Mt. Airy
Tyrell	Miss Georgia Piland	Columbia
Vance	Mrs. Hattie F. Plummer	Middleburg
Wilkes & Yadkin	Miss Hazel Browne	Elkin
Wake	Mrs. Maude McInnes	Raleigh
Washington	Miss Pratt Covington	Plymouth
Wayne	Miss Myrtie Keller	Goldsboro

NEGRO HOME DEMONSTRATION AGENTS

District Agent	Mrs. Dazelle Foster Lowe	Greensboro
Alamance	Mrs. Carrie Spaulding Wilson	Graham
Columbus	Mrs. Sarah Williams	Whiteville
Guilford	Miss Annie Murray	Greensboro
Mecklenburg	Miss Wilhelmina Laws	Charlotte
Robeson	Mrs. Lillian M. Debnam	Lumberton
Wake	Mrs. Bertha Maye Edwards	Raleigh
Wayne	Miss Emma McDougald	Goldsboro
Montgomery	Miss Anne Priest	Franklin
Gaston	Miss Annie Broughton	Gaston
Guilford	Miss Addie Houston	Guilford
Halifax	Mrs. Hazel Ervin Wheeler	Halifax
Hertford	Mrs. Grace P. Brown	Hertford
Iredell	Miss Virginia Sloan	Iredell