

NORTH CAROLINA STATE COLLEGE
AGRICULTURAL EXTENSION
RALEIGH, N. C.
I. O. SCHAUB, DIRECTOR

ANNUAL REPORT
of
4-H CLUB WORK
DECEMBER 1, 1927 to DECEMBER 1, 1928

By
L. R. HARRILL
STATE CLUB LEADER

TABLE OF CONTENTS

	<u>Page</u>
Introduction -----	1
Plan of Work -----	2
Plan of Organization -----	8
Results -----	9
Organization -----	9
Short Course -----	9
Schedule of Short Course -----	11
4-H Camps -----	12
Leadership Training Schools -----	13
National 4-H Camp -----	13
International Leadership Training School -----	13
Achievement Days -----	14
Results 4-H Livestock Demonstrations -----	15
Dairy Calf -----	15
Poultry -----	16
Pig -----	17
Results Field Crop Demonstrations -----	17
Corn -----	17
Cotton -----	17
Tobacco -----	18
Garden -----	18
Forestry -----	19
General Summary -----	20
Statistical -----	21
Table Showing Encampment Records -----	22
Table Showing Number of Judging Teams -----	23
Table Showing Number 4-H Club Members Entering College -----	24
Table Showing Results of 4-H Crop Demonstrations for 1925 -----	25
Table Showing Results of 4-H Crop Demonstrations for 1926 -----	26
Table Showing Results of 4-H Crop Demonstrations for 1927 -----	27
Table Showing Results of 4-H Crop Demonstrations for 1928 -----	28
Table Showing Comparison 4-H Crop Demon- strations for 1925 - 26 - 27 - 28	29
Table Showing Number 4-H Livestock Demon- strations for 1925 - 26 - 27 - 28	30
Table Showing Comparison of Results for 1925 - 26 - 27 - 28 -----	31

INTRODUCTION

This is a report of the 4-H Club Work conducted in North Carolina from December 1, 1927 to November 30, 1928 and includes the work of the Farm Agents, and the Home Agents who are cooperating with the 4-H Club Work.

This was the third year of organized 4-H Club Work in North Carolina. Its continued growth indicates that the 4-H way is the best way "To Make the Best Better".

The cooperation of the Farm, Home and District Agents has made possible our best year of organized 4-H Club Work. Local Leaders have aided materially in promoting our work.

PLAN OF WORK

The plan of work for the year was the same as last year and the year before, namely: The plan as outlined by the United States Department of Agriculture - all the boys and girls in any one school or community organized into one 4-H Club. The object has been to establish 4-H Club Work in as many counties as possible. Our first year's work was in the form of a demonstration, using four counties as trial counties. The demonstration proved to be successful; therefore, the same plan has been adopted for the other counties. The outline given on the following pages gives in detail our plan. All of the counties have not used this plan. However, a larger number adopt it each year and eventually we hope to see every county in the state conducting 4-H Club Work on an organized basis.

PLAN OF BOYS' AND GIRLS' 4-H CLUB WORK FOR 1928

Realizing the importance of club work to the boy and the girl and the fact that it offers one of the best methods of putting demonstration work before the public, we are making every effort possible to conduct club work in every county in the state employing a demonstration agent. It is our plan to conduct the work on the plan submitted.

ORGANIZATION

OBJECT:

- (a) To teach the fundamental essentials of organization.
- (b) To stimulate a greater interest and love for club work.
- (c) To teach the value of cooperation.
- (d) To afford a means for greater accomplishment in reaching a greater number of boys and girls.
- (e) To utilize all available talent as Local Leaders.

PROCEDURE:

- (a) To give every boy and girl in the community an opportunity to do club work.
- (b) To organize all club members in one community into one local 4-H club.
- (c) To make the clubs run themselves as far as possible.

ANTICIPATED RESULTS:

- (a) Reaching a greater number of boys and girls.
- (b) The accomplishment of more work.
- (c) To make use of Local Leaders.
- (d) The improvement of the quality and quantity of work done.
- (e) The development of Local Leadership.

TIME:

November - May.

PROJECT WORK

1 - CALF CLUB: (DAIRY)

Realizing that dairying is one of our most profitable industries and that calf club work can be used as a means to promote this industry, we are conducting it on a basis of developing both the club member and the dairy industry.

OBJECT:

- (a) To teach the individual the proper methods of selecting, feeding, handling, breeding, showing and marketing dairy cattle.

PROCEDURE:

- (a) To start the club member with either a grade or pure bred animal.
- (b) To cooperate with the Dairy Extension Division in promoting this work.

ANTICIPATED RESULTS:

- (a) To stimulate interest in dairying.
- (b) To teach the club member the most practical and economical methods of dairying.

TIME: January - December.

2 - CALF CLUB: (BEEF)

OBJECT:

To promote the beef cattle industry in the counties adapted to this work and to teach the club members the most practical and economical methods of feeding, showing and marketing beef cattle.

PROCEDURE:

To cooperate with the specialists in beef cattle work, the District and County Agents in promoting the work.

ANTICIPATED RESULTS:

To improve the type of beef cattle sold on the market and to stimulate the growing of more beef cattle in certain counties in the state.

TIME: January - December.

3 - POULTRY:

OBJECT:

To cooperate with the Poultry Division in promoting this work in teaching the club member practical and economical methods.

PROCEDURE:

- (a) To promote poultry work with all Extension Agents.
- (b) Require club members to keep standard bred flocks.
- (c) To conduct work as recommended by the Extension Agent and the Poultry Division.

4 - FIELD CROPS:

OBJECT:

To demonstrate the better methods of cultivation, fertilization, seed selection, judging, and exhibition of all major field and garden crops.

PROCEDURE:

- (a) To cooperate with all departments and agencies interested in the promotion of this work.
- (b) Require club members to practice the latest methods on the most economical and most practical basis.

ANTICIPATED RESULTS:

- (a) To increase the per acre production of all field crops.
- (b) To improve the quality and to stimulate a greater interest throughout the State in the profitable production of farm crops.

TIME: January - December.

5 - FORESTRY WORK:

OBJECT:

Realizing the necessity of conserving and replenishing our timber supply we are, in cooperation with the Extension Forester, conducting forestry work with the hope of creating a greater desire on the part of the club member to conserve and replenish our farm forests.

PROCEDURE:

To begin with a limited number of counties and a limited number of boys, and to teach the proper methods:

- (a) Forestry management
- (b) Timber thinning
- (c) Tree planting
- (d) Timber values.

ANTICIPATED RESULTS:

To create a greater interest in the conservation and preservation of our farm forests, and to teach the club member the proper methods of forestry management.

6 - STATE SHORT COURSE:

OBJECT:

To assemble as many club members as possible at State College for instruction in:

- (a) Project work
- (b) Recreation
- (c) Leadership training.

PROCEDURE:

- (a) Each county and local 4-H organization to finance sending representatives to the Short Course.
- (b) Instruction to be given by College teaching staff, assisted by Extension Workers.

ANTICIPATED RESULTS:

- (a) To have representatives from every county conducting club work.
- (b) To develop a greater love for club work.
- ✓ (c) To have 1000 in attendance.

7 - LOCAL 4-H CAMPS:

OBJECT:

To develop the recreational, inspirational and educational phases of 4-H club work, and to give the club members an opportunity to come in contact with the other club members of the county.

PROCEDURE:

To cooperate with District and County Agents in promoting and conducting 4-H Camps in as many counties as is practical.

ANTICIPATED RESULTS:

- (a) 4-H camps available for every club member.
- (b) The development of Leadership.

TIME: June 15 - September 5.

8 - PUBLICITY:

OBJECT:

To promote the cause of 4-H Club Work.

PROCEDURE:

- (a) Supply subject matter material for all projects.
- (b) Furnish records for each club member.
- (c) Make use of weekly and daily papers by furnishing them with outstanding stories and results of club work.

ANTICIPATED RESULTS:

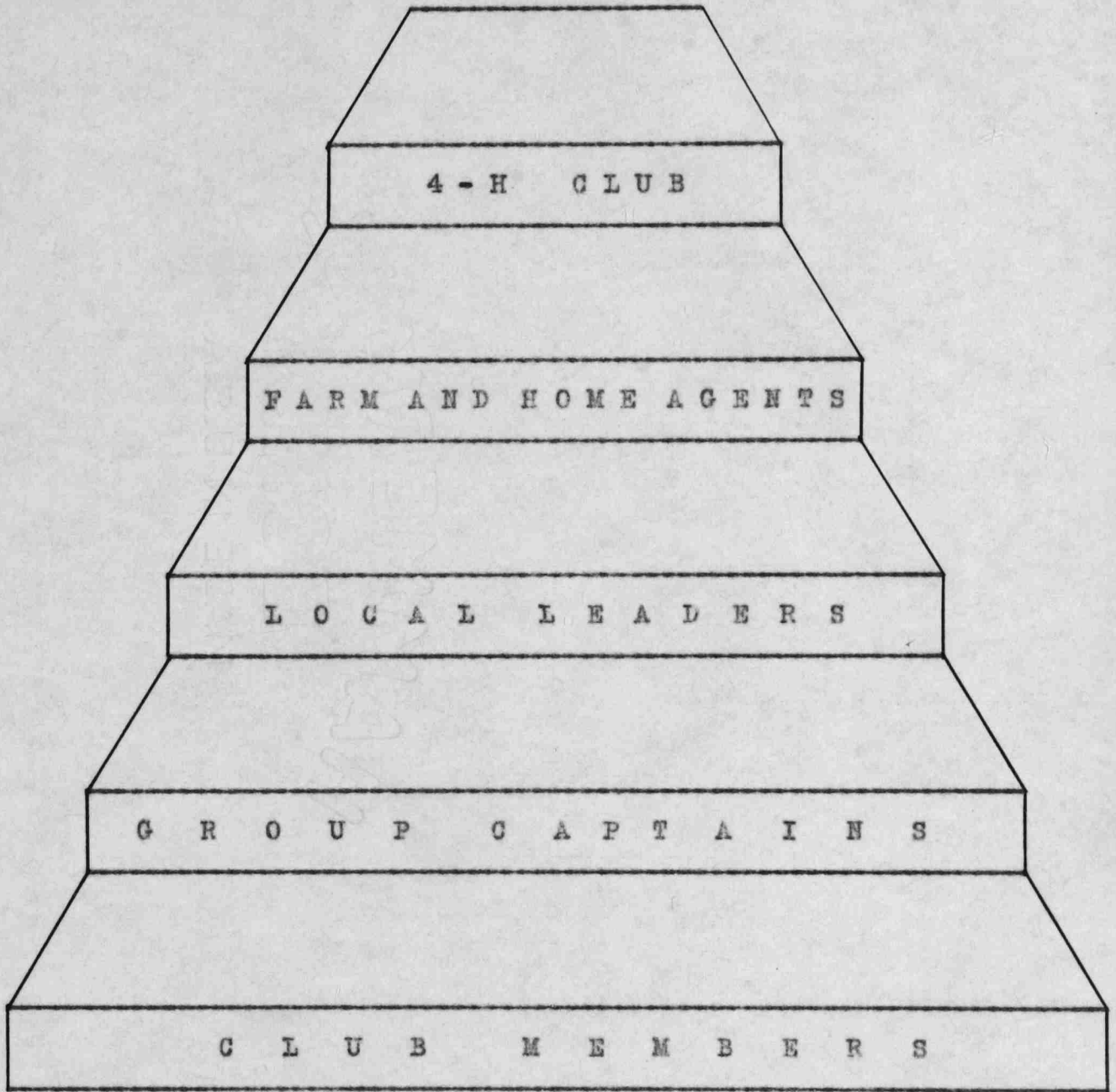
To increase the quantity and the quality of club work in the State.

TIME: January - December.

9 - MISCELLANEOUS:

- (a) To hold judging contests in connection with County, District and State Fairs.
- (b) To send 4 representatives to the National 4-H Camp in Washington, D. C.
- (c) To send one delegate to the Springfield Leadership Training School.
- (d) To form a 4-H organization of former club members attending State College.
- (e) To collect and prepare all the information possible for the promotion of 4-H club work.

PLAN OF ORGANIZATION



RESULTS

ORGANIZATION:

The same plan of organization which we have been using for three years was followed in part. Some of the agents still cling to the individual method while a large number of the Home Agents prefer to work only with the girls in separate organizations, therefore, this report will show a decrease from last year in number of organized clubs and especially in the enrollment since only boys and the girls conducting livestock or field crop demonstrations are counted in this report. While our enrollment has decreased our number of demonstrations completed has increased. The type of work has been better - more and better trained Local Leaders have given their services to 4-H Club Work. Outside organizations have contributed with time and money in promoting 4-H Club Work.

During the year numerous community and county organizations have been formed. A state organization was formed during the State Short Course.

STATE SHORT COURSE

Three hundred and five girls and one hundred and twenty boys attended the State Short Course July 30th to August 4th. This is about one hundred and fifty short of the number attending last year, due to the fact that our short course came in the midst of the tobacco harvest season.

The largest representation came from the Piedmont District. We had an increase over last year from the

following districts: Piedmont, Mountain and Central.

Aside from the attendance, the short course was the best one we have ever held. This was due largely to the efficient help of the extension agents, and to the fact that we had the entire campus to ourselves.

Mr. Walter T. Cartier, Supt. of the Charlotte Park and Recreation Commission, had charge of the recreation. B. T. Ferguson, district agent of northeastern district, had charge of the tours, and G. F. McCrary, district agent of the central district, had charge of the farm crops work. The other instruction work was in charge of the regular college teaching staff.

Courses of instruction were given in the following subjects: Food and Health, Clothing, Room Improvement, Music Appreciation, Poultry, Livestock, Farm Crops, Rope Work, Forestry, Farm Equipment and Recreation.

This year we placed more responsibility on the club members themselves, giving them the impression that it was their short course. We found that by doing this, the club members took more interest in the short course and consequently got a lot more out of it.

The two most important features of the short course were the assembly periods and the afternoon and evening programs. From twelve to one each day, the club members were assembled and given an opportunity to express their own views regarding club work in their counties and in the state. In the afternoon programs, they were likewise given practically all of the responsibility. We found that they took a much more active part.

During the week the first 4-H State Organization was formed with the following officers: Frank Raymond, Jr., Hertford County, Como, Route 1, President; Mildred Ives, Pasquotank County, Vice-President; Kathleen Mock, Davidson County, Secretary-Treasurer; Joe Carver, Davidson County, Historian. Three of the state officers are from two of the original demonstration counties in organized 4-H club work, Davidson County and Pasquotank County.

SCHEDULE FOR 1928 4-H SHORT COURSE

<u>MORNING PROGRAM</u>	<u>:</u>	<u>AFTERNOON PROGRAM</u>
6:15 : Rising Whistle	: 1:00	: Dinner
: Swim		
6:20 : Exercise	: 1:30	: Rest Period
7:00 : Breakfast	: 2:30-5:30	: Recreation
8:00 : Poultry	: 6:00	: Supper
9:00 : Livestock	: 6:30	: Vespers
10:00 : Farm Crops	: 7:00-8:00	: Games
11:00 : Farm Shop	: 8:30	: Evening Program
12:00 : Assembly	: 10:00	: Taps

4-H CAMPS

The purpose of the 4-H Camps is the promotion of more efficient organizations, leadership, cooperation, project work, and citizenship. To this end our course of instruction has been adjusted. Our 4-H Camps have always been a great factor in promoting and creating interest in 4-H Club Work not only among club members, but on the part of the general public. Realizing this every camp has been conducted in a way to give the best training possible in the limited amount of time available.

Forty counties held 4-H Camps during 1928 with an attendance of eighteen hundred forty-three. This is a decrease from last year both in the number of camps and the number attending. This is due largely to the fact that we are trying to consolidate our camps and because the requirements for attending camp are more rigid.

Practically all of the camps were held within a radius of fifty miles of the county seat. The camps were organized and conducted by the Farm and Home Agents with the assistance of the Local Leaders. The Extension Specialists assisted with these camps. Club members were given a large part in conducting and managing the camps thereby promoting leadership.

The cost of the camp was paid by the club members. The average cost was one dollar and fifty cents, per club member. Transportation was provided by the local clubs, in some cases school buses were used.

The instruction given at these camps included woodcraft, basketry, nature study, recreation, and subject matter subjects pertaining to the project work. The average length of camp was four days.

LEADERSHIP TRAINING SCHOOLS

Leadership Training Schools for Local Leaders were held in the following counties: - Durham, Stanly, Davidson, Pasquotank, Iredell, Henderson and Buncombe. Five hundred people attended these schools. The purpose of these schools was to train Local Leaders to assist with our program of 4-H Club Work. The results obtained were very satisfactory and we were getting more Local Leaders to take a more active part in community activities.

THE NATIONAL 4-H CAMP

William Baldwin and Ruth Alexander, both from Buncombe County, Theodore Royster from Gaston County, and Lucy Blake from Pender County represented North Carolina at the Second National 4-H Camp, Washington, D. C. on June 21 - 26, 1928.

INTERNATIONAL 4-H LEADERSHIP TRAINING SCHOOL

Sam Raper of Davidson County and Mildred Ives of Pasquotank County represented North Carolina at the International Leadership Training School, Springfield, Massachusetts on September 9 - 22, 1928.

ACHIEVEMENT DAYS

Ten counties held achievement days. Three of these were in the form of a 4-H Club Fair. One 4-H Club Fair has developed into a County Fair. The achievement days have a wholesome effect on 4-H Club Work and have done a lot to create interest in club work and in Extension Work as a whole. In addition to the Achievement Days, the club members have exhibited at practically every community, county, and district fair.

PROJECT WORK

CALF (DAIRY)

The object in promoting calf club work has been to teach the individual the proper methods of feeding, handling, breeding, showing and marketing dairy cattle and to improve the type and quality of dairy animals on the farms. Realizing that the biggest objective is the training of the club member, we have allowed the club members to use either grade or pure bred animals for this project. (The term grade meaning an animal sired by a Registered male).

Calf Club Work has been and is one of the leading projects. It is being used as a means of establishing Pure Bred Herds, and to establish dairying in some of the counties. Thirty-one counties report an enrollment of six hundred thirty-seven dairy calf club members with four hundred thirty-one members completing. Alamance County leads the State and the World in the number of Jersey Calf Club Members with a membership of one hundred seventy-five. Iredell, Catawba, Buncombe, Granville and Gaston have done outstanding work during the year.

William Baldwin of Buncombe County has made the best individual record. Starting with a six months old calf five years ago which cost him eighty dollars he has twelve Registered Jerseys valued at more than two thousand dollars. William was awarded a trip to the National Camp on his merits as a Calf Club Member.

POULTRY

4-H Poultry Club Work is the leading project in the number of counties and in the number enrolled. The object each year has been to increase the quantity and the quality of the work of each individual member. We have accomplished this to a limited degree.

Almost every county has some poultry club work. Two thousand seventy club members were enrolled in poultry club work. One thousand fifty-eight completed their projects. Catawba County again leads the State in Poultry Club Work. Club members in Catawba County sold \$1159.44 worth of eggs for hatching, \$6652.64 worth of eggs on the local market, \$5675.05 worth of birds and won \$1286.05 in prizes. The total cost of new stock and feed was \$6110.29 giving them a profit of \$14,133.39.

The outstanding individual record was made by Lonie Hagar of Catawba County. Hagar sold \$51.00 worth of eggs for hatching, \$574.00 worth of eggs on the local market, \$140.95 worth of poultry and added \$122.60 to his stock. His total cost was \$571.89 giving him a profit of \$606.66.

Club Birds from Catawba and Lincoln Counties won 37 first prizes, 3 seconds and 1 third prize, out of 43 entries, at the Madison Square Poultry Show. This is the largest number of individual winnings ever won at the show.

PIG CLUB

Pig Club Work has been conducted on the basis of the Fat Hog Project or Feeding Demonstration and the Brood Sow and Ton Litter. The object is these demonstrations has been to demonstrate the proper methods of feeding, handling, marketing and breeding. We have advocated the growing of feeds by the club members. Twelve hundred seventeen boys and girls enrolled in Pig Club Work, nine hundred thirty-six completed and reported.

FIELD CROPS

The object in conducting the field crops projects has been to demonstrate the better methods of cultivation, fertilization, seed selection, judging, and exhibiting of all major field and garden crops. There has been a substantial increase in each of these projects.

CORN

Six hundred sixty-four boys and girls conducted one acre demonstrations in corn growing. Four hundred fourteen completed and reported. The best record reported was by Jesse Johnson of Pasquotank County who produced one hundred fifty bushels on one acre at a cost of .268 cents per bushel making a profit of \$109.80.

COTTON

Two hundred sixty-three members enrolled in Cotton Club Work. One hundred ninety-seven completed and reported.

Ellenson McDougald of Jonesboro, Route 1, Lee

County, is the outstanding cotton club member in the State. For the fifth year in succession he has made more than a bale of cotton to an acre. His average production for the five years has been nineteen hundred eighty-three pounds of seed cotton per acre. The average cost for growing and harvesting the cotton has been fifty-four dollars and eighty-eight cents. The average yearly value of the cotton produced has been one hundred sixty-five dollars and ten cents giving him an average net profit of one hundred ten dollars and forty-two cents an acre per year covering the five year period or a total profit of five hundred fifty-two dollars and ten cents for the five years.

TOBACCO

One hundred fifty-six club members conducted tobacco demonstrations. Ninety-nine members completed and reported. Homer Roberson of Bladen County made a profit of two hundred forty-eight dollars from his acre of tobacco.

GARDENING

Seventy boys and girls enrolled in Garden Club Work. Forty-six completed and reported. The best individual record was reported by Everett Stafford of Pasquotank County who produced and marketed one hundred sixty-dollars and thirty-seven cents worth of vegetables at a total cost of fifty-two dollars and twenty cents giving him a net profit of one hundred eight dollars and seventeen cents.

FORESTRY

Forestry Work has been conducted in only a few counties, the object being to teach the economic value of our timber. Several counties have club members carrying on forestry projects with splendid results. Forestry and Nature Study are taught at practically every 4-H Camp including the State Short Course.

Emmett and George Turbyfill of Catawba County, Maiden, Route 1, are the pioneers in Forestry Club Work being the first to enroll and the first to complete. A financial statement of the results from the thinning of one acre of spruce or Virginia pine shows the following:

FINANCIAL STATEMENT

Gross returns from sale of fuel wood from one acre of thinnings - 18½ cords @ \$3.25 -----	\$ 59.30
Cost of cutting and delivery -	
Cutting stumpage - 18½ cords @ \$.75 -	\$13.69
Hauling to market - 18½ cords @ \$.75 -	\$13.69
	<hr/>
	\$27.38 \$ 27.38
Net return from stumpage -----	\$ 31.92
Net labor return after deducting \$8.00 for expense of truck and hauling -----	19.38
	<hr/>
Total net income to farm from thinnings for one acre -----	\$ 51.30

GENERAL SUMMARY

In summarizing the work done in the State during the year the following results are shown. An increase in the number of agents doing club work; a slight decrease in the number of organized clubs; an increase in the number of boys enrolled and a decrease in the number of girls enrolled; a substantial increase in the number of completed demonstrations - sixty-one percent of the numbers enrolled completed and reported.

The organization of club work in the State is on the best basis it has ever been. The Farm, Home and District Agents are devoting more time and interest to 4-H Club Work.

STATISTICAL

Days spent in Field -----	141 1/2
Days spent in Office -----	157
Days Annual Leave -----	13 1/2
Days Sick Leave -----	6
Number of County Agent Visits -----	154
Number of Meetings Assisted With -----	76
Attendance at Meetings -----	7740
Letters Written -----	908
Office Conferences -----	474
Miles Traveled -----	12,118
Number Articles Written -----	117
Number Publications -----	12
Copies -----	2400
Circular Letters -----	31
Copies -----	5970
Bulletin (Written not Published) -----	1

TABLE SHOWING ENCAMPMENT RECORD

YEAR	NO. COUNTIES	CONDUCTING CAMPS	AGENTS	CAMPS	ATTENDANCE	BOYS	GIRLS	TOTAL	PERCENTAGE	ENROLIMENT	ATTENDING
1925	23	23	23	23	417	421	838	74.9			
1926	31	31	31	31	836	868	1704	77.5			
1927	26	26	26	26	1004	704	1708	28.0			
1928	30	30	30	30	756	1087	1843	32.0			

TABLE SHOWING THE NUMBER AND DISTRIBUTION
OF JUDGING TEAMS AND DEMONSTRATION TEAMS TRAINED

YEAR	COUNTIES WITH AGENTS	COUNTIES REPORTING	COUNTIES TRAINING TEAMS	NUMBER TEAMS TRAINED
1925	89	36	21	69
1926	83	57	8	62
1927	87	55	6 - 4	25 - 6
1928	78	58	10 - 6	13 - 11

TABLE SHOWING NUMBER OF 4-H CLUB MEMBERS ENTERING COLLEGE

YEAR :	NUMBER :	NUMBER :	NUMBER :	NUMBER :	PERCENTAGE :
:	ENROLLED :	COMPLETING :	COUNTIES :	ATTENDING :	COMPLETING :
:	4-H CLUB :	:	REPORTING :	COLLEGE :	ATTENDING :
:	:	:	:	:	COLLEGE :
1925 :	1989 :	1108 :	33 :	Incomplete :	Incomplete
1926 :	4048 :	2196 :	26 :	112 :	5
1927 :	6011 :	3211 :	41 :	198 :	12
1928 :	5760 :	3502 :	37 :	716 :	20

TABLE SHOWING RESULTS OF 4-H CROP DEMONSTRATIONS FOR 1925

CROP	NO. AGENTS: REPORTING	NUMBER ENROLLED	NUMBER COMPLETING	NUMBER ACRES	YIELD	AVERAGE YIELD *	STATE AV. YIELD *
Corn	30	327	191	275	10950	43.4	18.5
Wheat	2	10	7	12	399	33.2	11.0
Soy Beans	3	45	30	22	4½ ton 66		
C. Clover	1	5	5	5			
Peanuts	5	35	22	14 1/2	771	47.4	
Lespedeza	1	2	2	2	3/4 ton	3/8 ton	
Pasture	1	1	1	1			
I. Potato	5	53	17	8 1/2	1192	149	78
S. Potato	1	1	1	2	125	125	88
Cotton	24	212	139	183	152658	834	815
Tobacco	4	27	10	9	5410	601	695
Others	2	6	6	1	146	146	
Tree Fruit	2	2	2	1 3/4	31	15.5	
Garden	2	64	29	2			

* Yields given only for Major Crops.

25

TABLE SHOWING RESULTS OF 4-H CROP DEMONSTRATIONS FOR 1926

CROP	NO. AGENTS REPORTING	NUMBER ENROLLED	NUMBER COMPLETING	NUMBER ACRES	YIELD	AVERAGE YIELD *	STATE AV. YIELD*
Corn	34	436	261	364 1/2	11942	32.8	22
Wheat	2	33	32	18	416	23.1	14.1
Soy Beans	2	27	26	13	97		
C. Clover	1	4	4	6	1/2 ton		
Peanuts	3	21	11	4	62	15.0	
I. Potato	8	70	50	14 3/4	2072	140.0	94
S. Potato	3	25		4	1108	277.0	90
Cotton	24	266	177	222	183193	825.0	735
Tobacco	6	29	21	19 3/4	18786	989.0	684
Fruit	2	44	16		33		
M. Garden	3	39	26	6	195		
H. Garden	5	275	107	77	150		

* Yields given only for Major Crops.

26

CROP	NO. AGENTS: REPORTING	NUMBER ENROLLED	NUMBER COMPLETING	NUMBER ACRES	YIELD	AVERAGE YIELD*	STATE AV. YIELD*
Corn	42	545	350	481 1/4	21246 1/2	44.3	22.8
Wheat	3	4	3	6 1/2	117	15	10.7
Barley	1	1	1	1	36 1/2		
Soy Beans	4	18	13	13	20		
C. Clover	1	1	1	4	8 ton		
Cow Peas	2	2	2	1	6		
Peanuts	5	53	43	5	83	83	
Pasture	1	1	1	1			
Others	1	4	4	4	4 ton		
I. Potato	11	69	47	13 1/4	2000 1/2	152	102
S. Potato	5	33	18	9 1/2	2127	224	114
Cotton	17	154	106	137	133402	974	681
Tobacco	10	82	42	39 1/2	35494	897	737
Others	2	42	19	7 3/4			
Tree Fruit	3	12	6	1 1/2	35		
Grapes	1	15	10	68	100		
Garden	6	201	109	10	90		
Home Beauti.:	1	1	1	1			
Forestry	3	8	3	4			

* Yields given only for Major Crops.

TABLE SHOWING RESULTS OF 4-H CROP DEMONSTRATIONS FOR 1928

CROP	NO. AGENTS REPORTING	NUMBER ENROLLED	NUMBER COMPLETING	NUMBER ACRES	YIELD	AVERAGE YIELD *	STATE AV. YIELD **
Corn	47	665	414	501	21658½	40.25	18.5
Wheat	4	19	18	23 1/2	534	22.7	11.6
Oats	2	2	2	8	260		
Rye	1	1	1	4	72		
Soy Beans	2	8	8	7	66		
S. Clover	1	1	1		5		
Peanuts	7	59	30	15.3	614	132	
Lespedeza	1	1	1	1	2 ton		
I. Potato	15	180	105	23.5	4173	262	111
S. Potato	6	63	42	23 3/4	2462	103	98
Cotton	24	263	197	206	231891	1125	507
Tobacco	25	174	117	156	105393	675	651
Others	3	41	30	6	82		
Tree Fruit	4	5	5	3	12		
M. Garden	8	58	36	14	2544		
H. Garden	7	70	46	8 1/2	2177		
Home Beauti.:	3	461	215				
Forestry	3	12	7				

* Yields only given for Major Crops.

TABLE SHOWING COMPARISON OF 4-H CROP DEMONSTRATIONS FOR 1925 - 1926 - 1927 - 1928

CROP	NUMBER REPORTING				NUMBER ENROLLED				NUMBER COMPLETING			
	1925	1926	1927	1928	1925	1926	1927	1928	1925	1926	1927	1928
Corn	30	34	42	47	327	436	545	665	191	261	350	414
Wheat	2	2	3	4	10	33	4	19	7	32	3	18
Soy Bean	3	2	4	2	45	27	18	8	30	26	13	8
C. Clover	1	1	1	1	5	4	1	1	5	4	1	1
Peamut	5	3	5	7	35	21	53	59	22	11	43	30
Lespedeza	1		1	1	2			1	2			
Pastures	1		1		1		1		1		1	1
I. Potato	5	8	11	15	53	70	69	180	17	50	47	105
S. Potato	1	3	5	6	1	25	33	63	1		18	42
Cotton	24	24	17	24	212	266	154	263	139	177	106	197
Tobacco	4	6	10	20	27	29	82	156	10	21	42	99
Others	2		1	6	6		4	44	6		19	33
Fruit	2	2	3	4	2	44	13	5	2	16	6	5
Garden	2	8	6	15	64	314	201	128	29	133	109	82
Home Beauti.:			1	3			8	461			1	215
Forestry			3	3			1	12			3	7
Barley			1				1				1	

TABLE SHOWING THE NUMBER OF 4-H LIVESTOCK DEMONSTRATIONS

1925 - 1926 - 1927 - 1928

PROJECT :	NUMBER REPORTING :				NUMBER ENROLLED :				NUMBER COMPLETING :				NUMBER ANIMALS :			
	1925:	1926:	1927:	1928:	1925:	1926:	1927:	1928:	1925:	1926:	1927:	1928:	1925:	1926:	1927:	1928:
Calf (D) :	15:	18:	20:	39:	157:	158:	496:	637:	108:	126:	413:	451:	144:	154:	471:	556:
Calf (B) :	2:	1:	1:	2:	9:	14:	1:	8:	9:	7:	1:	7:	10:	7:	2:	7:
Swine :	26:	37:	31:	47:	418:	613:	1204:	1269:	318:	408:	685:	936:	1010:	1002:	1625:	1598:
Sheep :	3:	3:	1:	8:	8:	6:	10:	31:	7:	6:	6:	18:	69:	62:	41:	71:
Poultry :	20:	44:	36:	45:	915:	1741:	2332:	2080:	570:	991:	1151:	1058:	16650:	23125:	29459:	27843:
Others :	:	:	1:	1:	:	:	2:	1:	:	:	2:	1:	:	:	10:	2:

TABLE SHOWING COMPARISON OF RESULTS

1925 - 1926 - 1927 - 1928

YEAR :	NUMBER AGENTS :	NUMBER :	ENROLLMENT :	DEM. COMPLETED :	TOTAL :	PERCENTAGE :				
:	IN :	DOING 4-H :	ORGANIZED :	BOYS :	GIRLS :	BOYS :	GIRLS :	ENROLLED :	COMPLETED :	COMPLETED :
:	STATE :	CLUB WORK :	4-H CLUBS :	:	:	:	:	:	:	:
1925 :	89 :	36 :	171 :	1505 :	484 :	941 :	267 :	1989 :	1108 :	50.6 :
1926 :	83 :	57 :	227 :	2808 :	1240 :	1655 :	541 :	4048 :	2196 :	54.2 :
1927 :	87 :	55 :	342 :	3942 :	2069 :	2249 :	962 :	6011 :	3211 :	53.4 :
1928 :	78 :	58 :	331 :	4266 :	1494 :	2676 :	826 :	5760 :	3502 :	60.8 :